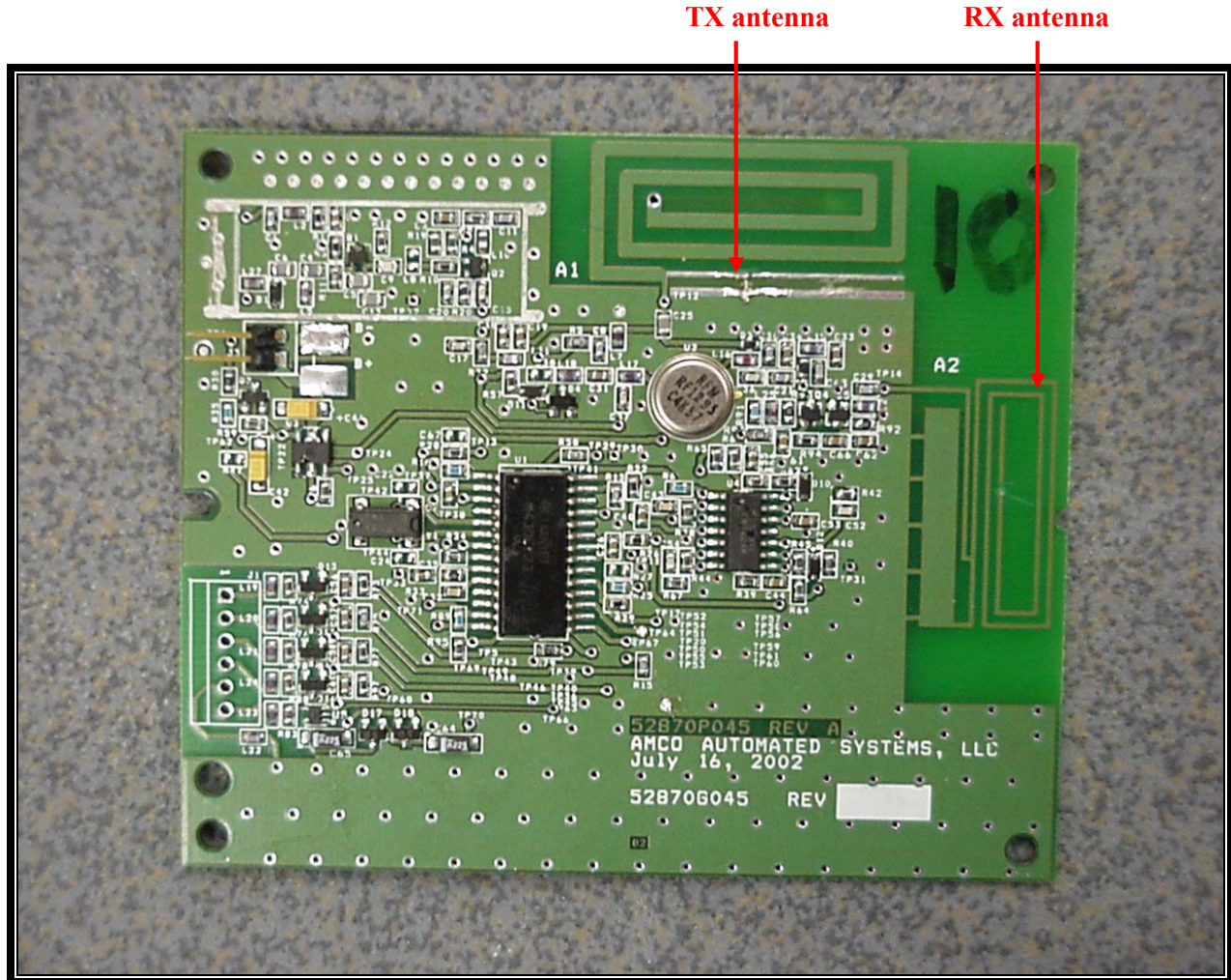


## APPENDIX A: ANTENNA SPECIFICATIONS



**PHOTOGRAPH 1: ANTENNA LOCATION**

## **Remote Gas-Meter Transponder Antenna Specifications**

The Remote Gas-Meter Transponder uses two (2) antennas; one for transmitting, and one for receiving. These antennas are integral to the product design. They are part of the printed wiring board. No external or purchased antennas are applicable to use with the product.