

FCC SAR REPORT

Report No.: JYTSZ-R14-2400125

Applicant: SWAGTEK

Address of Applicant: 10205 NW 19th Street, STE 101, Miami, FL33172, USA

Equipment Under Test (EUT)

Product Name: 2G Feature Phone

Model No.: A2, U20, SHIELD

Trade mark: LOGIC, UNONU, iSWAG

FCC ID: O55173824

Applicable standards: FCC 47 CFR Part 2.1093

Date of Test: 23 Oct., 2024 ~ 31 Oct., 2024

Test Result: Maximum Reported 1-g SAR (W/kg)
Head: 0.995 Body: 1.254

Project by: _____

Date: 15 Nov, 2024

Reviewed by: _____

Date: 15 Nov, 2024

Approved by: _____

Date: 15 Nov, 2024

Manager

This report details the results of the testing carried out on one sample. The results contained in this test report do not relate to other samples of the same product and does not permit the use of the JYT product certification mark. The manufacturer should ensure that all products in series production are in conformity with the product sample detailed in this report.

This report may only be reproduced and distributed in full. If the product in this report is used in any configuration other than that detailed in the report, the manufacturer must ensure the new system complies with all relevant standards.

This document cannot be reproduced except in full, without prior written approval of the Company. Any unauthorized alteration, forgery or falsification of the content or appearance of this document is unlawful and offenders may be prosecuted to the fullest extent of the law. Unless otherwise stated the results shown in this test report refer only to the sample(s) tested and such sample(s) are retained for 90 days only.

2 Version

Version No.	Date	Description
00	15 Nov, 2024	Original
01	21 Nov, 2024	Updated on page 31,32,47,48

3 Contents

1 COVER PAGE.....	1
2 VERSION.....	2
3 CONTENTS	3
4 SAR RESULTS SUMMARY.....	5
5 GENERAL INFORMATION.....	6
5.1 CLIENT INFORMATION	6
5.2 GENERAL DESCRIPTION OF EUT	6
5.3 MAXIMUM RF OUTPUT POWER	7
5.4 ENVIRONMENT OF TEST SITE	7
5.5 TEST SAMPLE PLAN	7
5.6 TEST LOCATION.....	7
6 INTRODUCTION.....	8
6.1 INTRODUCTION	8
6.2 SAR DEFINITION	8
7 RF EXPOSURE LIMITS	9
7.1 UNCONTROLLED ENVIRONMENT	9
7.2 CONTROLLED ENVIRONMENT	9
7.3 RF EXPOSURE LIMITS	9
8 SAR MEASUREMENT SYSTEM.....	10
8.1 E-FIELD PROBE.....	11
8.2 DATA ACQUISITION ELECTRONICS (DAE)	11
8.3 ROBOT.....	12
8.4 MEASUREMENT SERVER	12
8.5 LIGHT BEAM UNIT	12
8.6 PHANTOM	13
8.7 DEVICE HOLDER.....	14
8.8 DATA STORAGE AND EVALUATION	15
8.9 TEST EQUIPMENT LIST	17
9 TISSUE SIMULATING LIQUIDS	18
10 SAR SYSTEM VERIFICATION	20
11 EUT TESTING POSITION.....	22
11.1 HANDSET REFERENCE POINTS	22
11.2 POSITIONING FOR CHEEK / TOUCH.....	23
11.3 POSITIONING FOR EAR / 15o TILT	23
11.4 SAR EVALUATIONS NEAR THE MOUTH/JAW REGIONS OF THE SAM PHANTOM.....	24
11.5 BODY WORN ACCESSORY CONFIGURATIONS	24
12 MEASUREMENT PROCEDURES	25
12.1 SPATIAL PEAK SAR EVALUATION	25
12.2 POWER REFERENCE MEASUREMENT	26
12.3 AREA & ZOOM SCAN PROCEDURES.....	26
12.4 VOLUME SCAN PROCEDURES	27
12.5 SAR AVERAGED METHODS	27
12.6 POWER DRIFT MONITORING.....	27
13 CONDUCTED RF OUTPUT POWER	28
13.1 GSM CONDUCTED POWER.....	28
13.2 BLUETOOTH CONDUCTED POWER	29
14 SAR TEST RESULTS SUMMARY.....	30
14.1 STANDALONE HEAD SAR DATA.....	30
14.2 STANDALONE BODY SAR	31
14.3 REPEATED SAR MEASUREMENT	31
14.4 DUT HOLDER PERTURBATION UNCERTAINTY EVALUATION	32
14.5 MULTI-BAND SIMULTANEOUS TRANSMISSION CONSIDERATIONS	33
14.6 SAR SIMULTANEOUS TRANSMISSION ANALYSIS.....	34

14.7 MEASUREMENT UNCERTAINTY 35

14.8 MEASUREMENT CONCLUSION 36

15 REFERENCE 37

APPENDIX A: PLOTS OF SAR SYSTEM CHECK 38

APPENDIX B: PLOTS OF SAR TEST DATA 42

4 SAR Results Summary

The maximum results of Specific Absorption Rate (SAR) found during test as below:

<Highest Reported standalone SAR Summary>

Exposure Position	Frequency Band	Reported 1-g SAR (W/kg)	Equipment Class	Highest Reported 1-g SAR (W/kg)
Head	GSM 850	0.995	PCE	0.995
	PCS 1900	0.474		
	Bluetooth	0.000	DSS	
Body (10 mm Gap)	GSM 850	1.254	PCE	1.254
	PCS 1900	0.690		
	Bluetooth	0.000	DSS	

<Highest Reported simultaneous SAR Summary>

Exposure Position	Frequency Band	Reported 1-g SAR (W/kg)	Equipment Class	Highest Reported Simultaneous Transmission 1-g SAR (W/kg)
Back	GPRS 850 3Slots	1.254	PCE	1.254
	Bluetooth	0.000	DSS	

Note:

1. The highest simultaneous transmission is scalar summation of Reported standalone SAR per FCCDB 690783 D01 v01r03, and scalar SAR summation of all possible simultaneous transmission scenarios are < 1.6W/kg.
2. This device is compliance with Specific Absorption Rate (SAR) for general population/uncontrolled exposure limits (1.6 W/kg) specified in FCC 47 CFR part 2 (2.1093) and ANSI/IEEE C95.1-2005, and had been tested in accordance with the measurement methods and procedures specified in IEC/IEEE 62209-1528.

5 General Information

5.1 Client Information

Applicant:	SWAGTEK
Address of Applicant:	10205 NW 19th Street,STE 101, Miami, FL33172,USA
Manufacturer:	SWAGTEK
Address of Manufacturer:	10205 NW 19th Street,STE 101, Miami, FL33172,USA
Factory:	SWAGTEK
Address of Factory:	10205 NW 19th Street,STE 101, Miami, FL33172,USA

5.2 General Description of EUT

Product Name:	2G Feature Phone				
Model No.:	A2, U20, SHIELD				
Category of device	Portable device				
Operation Frequency:	GSM:	GSM850: 824.2~848.8 MHz		PCS 1900: 1850.2~1909.8 MHz	
	Bluetooth: 2402 MHz ~ 2480 MHz				
Modulation technology:	GSM:	<input checked="" type="checkbox"/> Voice(GMSK)	<input checked="" type="checkbox"/> GPRS(GMSK)	<input type="checkbox"/> EGPRS(GMSK, 8PSK)	
	Bluetooth:	<input checked="" type="checkbox"/> BDR(GFSK)	<input checked="" type="checkbox"/> EDR(π /4-DQPSK, 8DPSK)	<input type="checkbox"/> LE(GFSK)	
Antenna Type:	Internal Antenna				
Antenna Gain:	GSM 850: 0.30 dBi; PCS 1900: 1.60 dBi Bluetooth: 2.10 dBi;				
GPRS Class:	GPRS Class: 12				
Dimensions (L*W*H):	125mm (L)× 53mm (W)× 13mm (H)				
Accessories information:	Adapter: Model:Y06B Input:100-240V AC,50/60Hz 0.2A Output:5.0V DC 500mA			Battery: Rechargeable Li-ion Battery 3.7V/800mAh	
				Headset: Support headset (shipped without)	
Remark:	Model No.: A2, U20, SHIELD were identical inside, the electrical circuit design, layout, components used and internal wiring, with only difference being model name and trade mark.				

5.3 Maximum RF Output Power

Mode	Average Power (dBm)	
	GSM 850	PCS 1900
GSM (Voice)	34.10	30.65
GPRS (1TX Slot)	33.92	31.15
GPRS (2TX Slots)	32.09	29.29
GPRS (3TX Slots)	30.56	27.97
GPRS (4TX Slots)	28.86	26.18

Bluetooth Average Power (dBm)			
Mode/Band	1 Mbps(GFSK)	2 Mbps($\pi/4$ DQPSK)	3 Mbps (8DPSK)
Bluetooth	5.77	6.87	7.42

5.4 Environment of Test Site

Temperature:	18°C ~25°C
Humidity:	35%~75% RH
Atmospheric Pressure:	1010 mbar

5.5 Test Sample Plan

Sample Number	Used for Test Items
SZR012400516-3	SAR

Remark: JianYan Testing Group Shenzhen Co., Ltd. is only responsible for the test project data of the above samples, and will keep the above samples for a month.

5.6 Test Location

JianYan Testing Group Shenzhen Co., Ltd.
 No.101, Building 8, Innovation Wisdom Port, No.155 Hongtian Road, Huangpu Community,Xinqiao Street,
 Bao'an District, Shenzhen, Guangdong,People's Republic of China.
 Tel: +86-755-23118282, Fax: +86-755-23116366
 Email: info-JYTee@lets.com, Website: http://jyt.lets.com

6 Introduction

6.1 Introduction

SAR is related to the rate at which energy is absorbed per unit mass in an object exposed to a radio field. The SAR distribution in a biological body is complicated and is usually carried out by experimental techniques or numerical modeling. The standard recommends limits for two tiers of groups, occupational/controlled and general population/uncontrolled, based on a person's awareness and ability to exercise control over his or her exposure. In general, occupational/controlled exposure limits are higher than the limits for general population/uncontrolled.

6.2 SAR Definition

The SAR definition is the time derivative (rate) of the incremental energy (dW) absorbed by (dissipated in) an incremental mass (dm) contained in a volume element (dv) of a given density (ρ). The equation description is as below:

$$SAR = \frac{d}{dt} \left(\frac{dU}{dm} \right) = \frac{d}{dt} \left(\frac{dU}{\rho dv} \right)$$

SAR is expressed in units of Watts per kilogram (W/kg)

SAR measurement can be either related to the temperature elevation in tissue by

$$SAR = C \left(\frac{\delta T}{\delta t} \right)$$

Where: C is the specific heat capacity, δT is the temperature rise and δt is the exposure duration, or related to the electrical field in the tissue by

$$SAR = \frac{\sigma \cdot E^2}{\rho}$$

Where: σ is the conductivity of the tissue, ρ is the mass density of the tissue and E is the RMS electrical field strength. However for evaluating SAR of low power transmitter, electrical field measurement is typically applied.

7 RF Exposure Limits

7.1 Uncontrolled Environment

Uncontrolled Environments are defined as locations where there is the exposure of individuals who have no knowledge or control of their exposure. The general population/uncontrolled exposure limits are applicable to situations in which the general public may be exposed or in which persons who are exposed as a consequence of their employment may not be made fully aware of the potential for exposure or cannot exercise control over their exposure. Members of the general public would come under this category when exposure is not employment-related; for example, in the case of a wireless transmitter that exposes persons in its vicinity.

7.2 Controlled Environment

Controlled Environments are defined as locations where there is exposure that may be incurred by persons who are aware of the potential for exposure, (i.e. as a result of employment or occupation). In general, occupational/controlled exposure limits are applicable to situations in which persons are exposed as a consequence of their employment, who have been made fully aware of the potential for exposure and can exercise control over their exposure. This exposure category is also applicable when the exposure is of a transient nature due to incidental passage through a location where the exposure levels may be higher than the general population/uncontrolled limits, but the exposed person is fully aware of the potential for exposure and can exercise control over his or her exposure by leaving the area or by some other appropriate means.

7.3 RF Exposure Limits

SAR Human Exposure Specified in ANSI/IEEE C95.1-1992 and Health Canada Safety Code 6

HUMAN EXPOSURE LIMITS		
	UNCONTROLLED ENVIRONMENT <i>General Population</i> (W/kg) or (mW/g)	CONTROLLED ENVIRONMENT <i>Occupational</i> (W/kg) or (mW/g)
SPATIAL PEAK SAR Brain	1.6	8.0
SPATIAL AVERAGE SAR Whole Body	0.08	0.4
SPATIAL PEAK SAR Hands, Feet, Ankles, Wrists	4.0	20

Note:

1. The Spatial Peak value of the SAR averaged over any 1 gram of tissue (defined as a tissue volume in the shape of a cube) and over the appropriate averaging time.
2. The Spatial Average value of the SAR averaged over the whole body.
3. The Spatial Peak value of the SAR averaged over any 10 grams of tissue (defined as a tissue volume in the shape of a cube) and over the appropriate averaging time.

8 SAR Measurement System

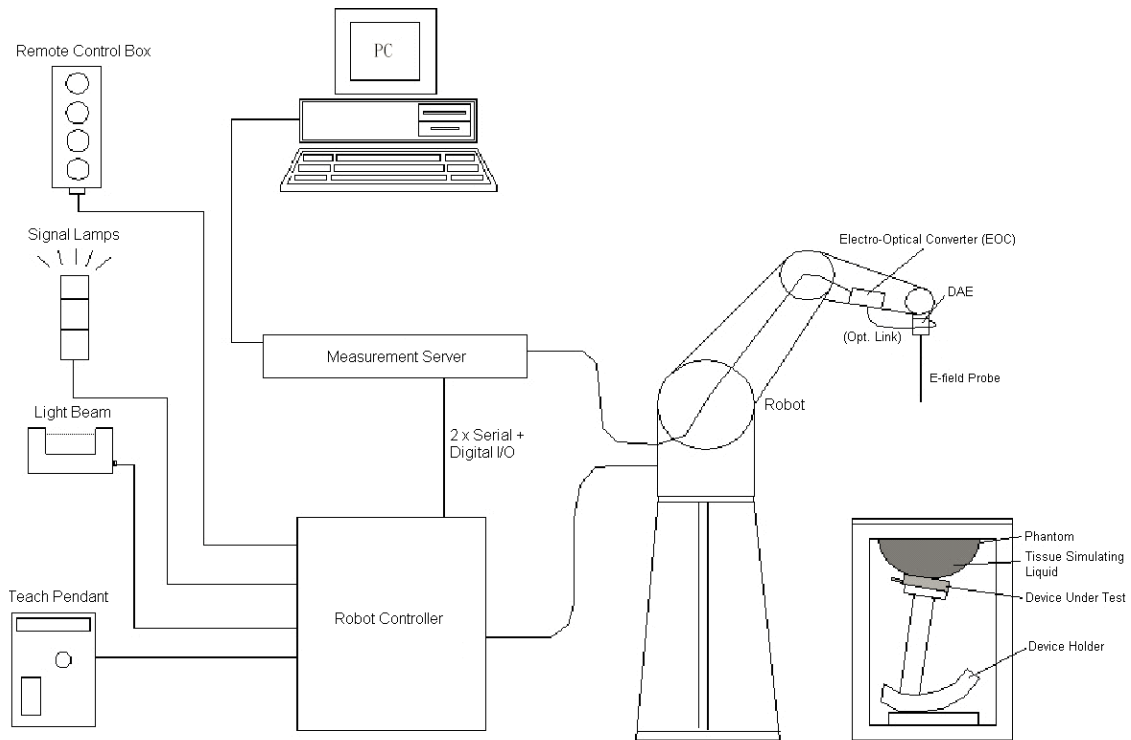


Fig.8.1 SPEAG DASY System Configurations

The DASY system for performance compliance tests is illustrated above graphically. This system consists of the following items:

- A standard high precision 6-axis robot with controller, a teach pendant and software
- A data acquisition electronic (DAE) attached to the robot arm extension
- A dosimetric probe equipped with an optical surface detector system
- The electro-optical converter (EOC) performs the conversion between optical and electrical signals
- A measurement server performs the time critical tasks such as signal filtering, control of the robot operation and fast movement interrupts.
- A probe alignment unit which improves the accuracy of the probe positioning
- A computer operating Windows XP
- DASY software
- Remote control with teach pendant and additional circuitry for robot safety such as warning lamps, etc.
- The SAM twin phantom
- A device holder
- Tissue simulating liquid
- Dipole for evaluating the proper functioning of the system

Component details are described in the following sub-sections.

8.1 E-Field Probe

The SAR measurement is conducted with the dosimetric probe (manufactured by SPEAG). The probe is specially designed and calibrated for use in liquid with high permittivity. The dosimetric probe has special calibration in liquid at different frequency. This probe has a built in optical surface detection system to prevent from collision with phantom.

➤ E-Field Probe Specification <EX3DV4 Probe>


Construction	Symmetrical design with triangular core Built-in shielding against static charges PEEK enclosure material (resistant to organic solvents, e.g., DGBE)	
Frequency Directivity	10MHz to 6 GHz; Linearity: ± 0.2 dB ± 0.3 dB in HSL (rotation around probe axis) ± 0.5 dB in tissue material (rotation normal to probe axis)	
Dynamic Range	10 μ W/g to 100 mW/g; Linearity: ± 0.2 dB (noise: typically < 1 μ W/g)	
Dimensions	Overall length: 330 mm (Tip: 20mm) Tip diameter: 2.5 mm (Body: 12mm) Typical distance from probe tip to dipole centers: 1 mm	

Fig.8.2 Photo of E-Field Probe

➤ E-Field Probe Calibration

Each probe needs to be calibrated according to a dosimetric assessment procedure with accuracy better than $\pm 10\%$. The spherical isotropy shall be evaluated and within ± 0.25 dB. The sensitivity parameters (Norm X, Norm Y and Norm Z), the diode compression parameter (DCP) and the conversion factor (ConvF) of the probe are tested. The calibration data can be referred to appendix E of this report.

8.2 Data Acquisition Electronics (DAE)

The Data acquisition electronics (DAE) consists of a highly sensitive electrometer-grade preamplifier with auto-zeroing, a channel and gain-switching multiplexer, a fast 16 bit AD-converter and a command decoder and control logic unit. Transmission to the measurement server is accomplished through an optical downlink for data and status information as well as an optical uplink for commands and the clock. The input impedance of the DAE is 200 MOhm; the inputs are symmetrical and floating. Common mode rejection is above 80 dB.

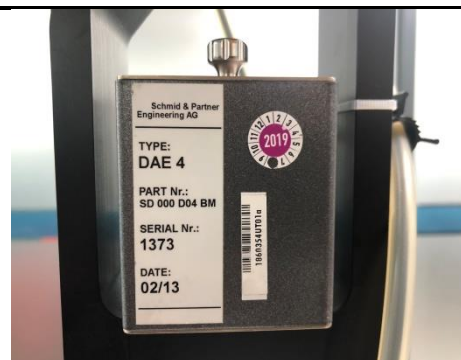


Fig. 8.3 Photo of DAE

8.3 Robot

The SPEAG DASY system uses the high precision robots (DASY5: TX60XL) type from Stäubli SA (France). For the 6-axis controller system, the robot controller version (DASY5: CS8c) from Stäubli is used. The Stäubli robot series have many features that are important for our application:

- High precision (repeatability 0.02 mm)
- High reliability (industrial design)
- Low maintenance costs (virtually maintenance free due to direct drive motors; no belt drives)
- Jerk-free straight movements
- Low ELF interference (motor control fields shielded via the closed metallic construction shields)



Fig. 8.4 Photo of Robot

8.4 Measurement Server

The measurement server is based on a PC/104 CPU board with CPU (DASY 5: 400MHz, Intel Celeron), chip-disk (DASY5: 128 MB), RAM (DASY5: 128 MB). The necessary circuits for communication with the DAE electronic box, as well as the 16 bit AD converter system for optical detection and digital I/O interface are contained on the DASY I/O board, which is directly connected to the PC/104 bus of the CPU board.

The measurement server performs all the real-time data evaluation for field measurements and surface detection, controls robot movements and handles safety operations.



Fig. 8.5 Photo of Server for DASY5

8.5 Light Beam Unit

The light beam switch allows automatic "tooling" of the probe. During the process, the actual position of the probe tip with respect to the robot arm is measured, as well as the probe length and the horizontal probe offset. The software then corrects all movements, such that the robot coordinates are valid for the probe tip.

The repeatability of this process is better than 0.1 mm. If a position has been taught with an aligned probe, the same position will be reached with another aligned probe within 0.1 mm, even if the other probe has different dimensions. During probe rotations, the probe tip will keep its actual position.



Fig. 8.6 Photo of Light Beam

8.6 Phantom

<SAM Twin Phantom>

Shell Thickness	2 ± 0.2 mm; Center ear point: 6 ± 0.2 mm
Filling Volume	Approx. 25 liters
Dimensions	Length: 1000mm; Width: 500mm; Height: adjustable feet
Measurement Areas	Left Head, Right Head, Flat phantom



Fig. 8.7 Photo of SAM Twin Phantom

The bottom plate contains three pair of bolts for locking the device holder. The device holder positions are adjusted to the standard measurement positions in the three sections. A white cover is provided to tap the phantom during off-periods to prevent water evaporation and changes in the liquid parameters. On the phantom top, three reference markers are provided to identify the phantom position with respect to the robot.

<ELI4 Phantom>

The ELI4 phantom is intended for compliance testing of handheld and body-mounted wireless devices in the frequency range of 30MHz to 6 GHz. ELI4 is fully compatible with the latest draft of the standard IEC 62209-2 and all known tissue simulating liquids.

ELI4 has been optimized regarding its performance and can be integrated into a SPEAG standard phantom table. A cover prevents evaporation of the liquid. Reference markings on the phantom allow installation of the complete setup, including all predefined phantom positions and measurement grids, by teaching three points. The phantom can be used with the following tissue simulating liquids:

- Water-sugar based liquids can be left permanently in the phantom. Always cover the liquid if the system is not in use; otherwise the parameters will change due to water evaporation.
- DGBE based liquids should be used with care. As DGBE is a softener for most plastics, the liquid should be taken out of the phantom and the phantom should be dried when the system is not in use (desirable at least once a week).
- Do not use other organic solvents without previously testing the phantom resistiveness

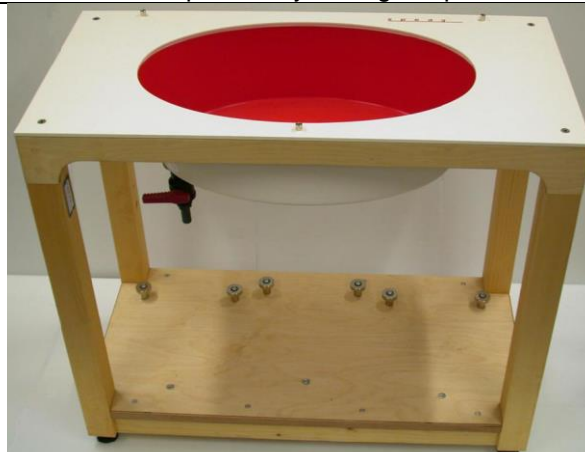


Fig.8.8 Photo of ELI4 Phantom

8.7 Device Holder

<Device Holder for SAM Twin Phantom>

The SAR in the phantom is approximately inversely proportional to the square of the distance between the source and the liquid surface. For a source at 5 mm distance, a positioning uncertainty of ± 0.5 mm would produce a SAR uncertainty of ± 20 %. Accurate device positioning is therefore crucial for accurate and repeatable measurements. The positions in which the devices must be measured are defined by the standards. The DASY device holder is designed to cope with different positions given in the standard. It has two scales for the device rotation (with respect to the body axis) and the device inclination (with respect to the line between the ear reference points). The rotation center for both scales is the ear reference point (ERP).

Thus the device needs no repositioning when changing the angles.

The DASY device holder is constructed of low-loss POM material having the following dielectric parameters: relative permittivity $\epsilon = 3$ and loss tangent $\delta = 0.02$. The amount of dielectric material has been reduced in the closest vicinity of the device, since measurements have suggested that the influence of the clamp on the test results could thus be lowered.



Fig. 8.9 Photo of Device Holder

8.8 Data storage and Evaluation

➤ Data Storage

The DASY software stores the assessed data from the data acquisition electronics as raw data (in microvolt readings from the probe sensors), together with all the necessary software parameters for the data evaluation (probe calibration data, liquid parameters and device frequency and modulation data) in measurement files. The post-processing software evaluates the desired unit and format for output each time the data is visualized or exported. This allows verifications of the complete software setup even after the measurement and allows correction of erroneous parameter settings. For example, if a measurement has been performed with an incorrect crest factor parameter in the device setup, the parameter can be corrected afterwards and the data can be reevaluated.

The measured data can be visualized or exported in different units or formats, depending on the selected probe type (e.g., [V/m], [mW/g]). Some of these units are not available in certain situations or give meaningless results, e.g., a SAR-output in a non-lose media, will always be zero. Raw data can also be exported to perform the evaluation with other software packages.

➤ Data Evaluation

The DASY post-processing software (SEMCAD) automatically executes the following procedures to calculate the field units from the microvolt readings at the probe connector. The parameters used in the evaluation are stored in the configuration modules of the software:

Probe Parameters:	- Sensitivity	$\text{Norm}_i, a_{i0}, a_{i1}, a_{i2}$
	- Conversion	ConvF_i
	- Diode compression point	dcp_i
Device Parameters:	- Frequency	f
	- Crest	cf
Media Parameters:	- Conductivity	σ
	- Density	ρ

These parameters must be set correctly in the software. They can be found in the component documents or they can be imported into the software from the configuration files issued for the DASY components. In the direct measuring mode of the multi-meter option, the parameters of the actual system setup are used. In the scan visualization and export modes, the parameters stored in the corresponding document files are used.

The first step of the evaluation is a linearization of the filtered input signal to account for the compression characteristics of the detector diode. The compensation depends on the input signal, the diode type and the DC-transmission factor from the diode to the evaluation electronics. If the exciting field is pulsed, the crest factor of the signal must be known to correctly compensate for peak power.

The formula for each channel can be given as:

$$V_i = U_i + U_i^2 \cdot \frac{cf}{dcp_i}$$

With V_i = compensated signal of channel i, (i = x, y, z)
 U_i = input signal of channel i, (i = x, y, z)
 cf = crest factor of exciting field (DASY parameter)
 dcp_i = diode compression point (DASY parameter)

From the compensated input signals, the primary field data for each channel can be evaluated:

$$\text{E- Field Probes: } E_i = \sqrt{\frac{V_i}{\text{Norm}_i \cdot \text{ConvF}}}$$

$$\text{H-Field Probes: } H_i = \sqrt{V_i} \cdot \frac{a_{i0} + a_{i1}f + a_{i2}f^2}{f}$$

With V_i = compensated signal of channel i, (i = x, y, z)
 Norm_i = sensor sensitivity of channel i, (i = x, y, z), $\mu\text{V}/(\text{V/m})^2$
 ConvF = sensitivity enhancement in solution
 a_{ij} = sensor sensitivity factors for H-field probes
 f = carrier frequency (GHz)
 E_i = electric field strength of channel i in V/m
 H_i = magnetic field strength of channel i in A/m

The RSS value of the field components gives the total field strength (Hermitian magnitude):

$$E_{\text{tot}} = \sqrt{E_x^2 + E_y^2 + E_z^2}$$

The primary field data are used to calculate the derived field units.

$$\text{SAR} = E_{\text{tot}}^2 \cdot \frac{\sigma}{\rho \cdot 1000}$$

With SAR = local specific absorption rate in mW/g
 E_{tot} = total field strength in V/m
 σ = conductivity in (mho/m) or (Siemens/m)
 ρ = equipment tissue density in g/cm^3

Note that the density is set to 1, to account for actual head tissue density rather than the density of the tissue simulating liquid.

8.9 Test Equipment List

Manufacturer	Equipment Description	Model	Management Number	Cal. Information	
				Last Cal.	Due Date
SPEAG	835MHz System Validation Kit	D835V2	WXJ023-1	06.08.2022	06.07.2025
SPEAG	1900MHz System Validation Kit	D1900V2	WXJ023-2	06.07.2022	06.06.2025
SPEAG	Data Acquisition Electronics	DAE4	WXJ021	11.27.2023	11.26.2024
SPEAG	Dosimetric E-Field Probe	EX3DV4	WXJ022-1	01.29.2024	01.28.2025
SPEAG	DASY 52 Measurement Software	DASY 52	Version 52.10.4.1527	N.C.R	N.C.R
SPEAG	DASY 52 File Conversion Software	SEMCAD X	Version 14.6.14 (7501)	N.C.R	N.C.R
SPEAG	Robot Controller	CS8Cspeag-TX60	WXG023-1	N.C.R	N.C.R
SPEAG	Phantom	Twin SAM V5.0	WXG023-4	N.C.R	N.C.R
SPEAG	Phantom	2mm Oval Phantom ELI5	WXG023-5	N.C.R	N.C.R
SPEAG	Phone Positioner	N/A	WXG023-6	N.C.R	N.C.R
St?ubli	Robot	TX60Lspeag	WXG023-3	N.C.R	N.C.R
R&S	Universal Radio Communication Tester	CMU200	WXJ008-2	12.27.2023	12.26.2025
KEYSIGHT	Network Analyzer	E5071C	WXJ091	12.27.2023	12.26.2024
KEYSIGHT	EPM Series Power Meter	N1914A	WXJ075	06.11.2024	06.10.2025
KEYSIGHT	E-Series Power Sensor	E9300H	WXJ075-1	06.11.2024	06.10.2025
KEYSIGHT	E-Series Power Sensor	E9300H	WXJ075-2	06.11.2024	06.10.2025
KEYSIGHT	Signal Generator	N5173B	WXJ006-3	09.09.2024	09.08.2025
Huber Suhner	RF Cable	SUCOFLEX	WXG008-13	See Note 3	
Huber Suhner	RF Cable	SUCOFLEX	WXG008-14	See Note 3	
Huber Suhner	RF Cable	SUCOFLEX	WXG008-15	See Note 3	
Weinschel	Attenuator	23-3-34	WXG008-16	See Note 3	
Anritsu	Directional Coupler	MP654A	WXG008-17	See Note 3	
SPEAG	Dielectric Assessment Kit	3.5 Probe	WXG008-7	See Note 4	
SPEAG	DAK Measurement Software	DAK	Version: DAK 3.5	N.C.R	
TXC	Broadband Amplifier	BBA018000	WXG008-11	See Note 5	

Note:

1. The calibration certificate of DASY can be referred to appendix C of this report.
2. Referring to KDB 865664 D01v01r04, the dipole calibration interval can be extended to 3 years with justification. The dipoles are also not physically damaged, or repaired during the interval.
3. The Insertion Loss calibration of Dual Directional Coupler and Attenuator were characterized via the network analyzer and compensated during system check.
4. The dielectric probe kit was calibrated via the network analyzer, with the specified procedure (calibrated in pure water) and calibration kit (standard) short circuit, before the dielectric measurement. The specific procedure and calibration kit are provided by Speag.
5. In system check we need to monitor the level on the spectrum analyzer, and adjust the power amplifier level to have precise power level to the dipole; the measured SAR will be normalized to 1 W input power according to the ratio of 1 W to the input power to the dipole. For system check, the calibration of the power amplifier is deemed not critically required for correct measurement; the spectrum analyzer is critical and we do have calibration for it
6. Attenuator insertion loss is calibrated by the network Analyzer, which the calibration is valid, before system check.
7. N.C.R means No Calibration Requirement.

9 Tissue Simulating Liquids

For the measurement of the field distribution inside the SAM phantom with DASY, the phantom must be filled with around 25 liters of homogeneous body tissue simulating liquid. For head SAR testing, the liquid height from the ear reference point (ERP) of the phantom to the liquid top surface is larger than 15 cm, which is shown in Fig. 9.1, for body SAR testing, the liquid height from the center of the flat phantom to liquid top surface is larger than 15 cm, which is shown in Fig. 9.2.

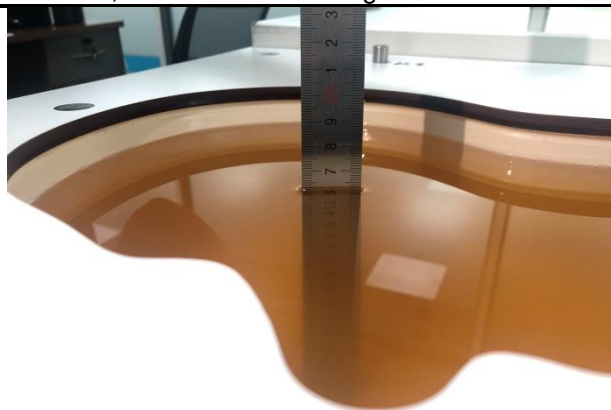


Fig. 9.3 Photo of Liquid Height for Head SAR (600MHz~6000MHz)(depth>15cm)

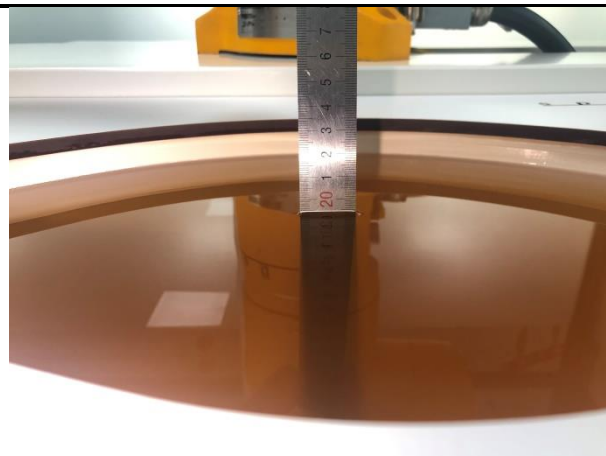


Fig. 9.4 Photo of Liquid Height for Body SAR (600MHz~6000MHz) (depth>15cm)

The relative permittivity and conductivity of the tissue material should be within $\pm 5\%$ of the values given in the table below recommended by the FCC OET 65 supplement C and RSS 102 Issue 5.

Target Frequency (MHz)	ϵ_r	σ (S/m)
150	52.3	0.76
300	45.3	0.87
450	43.5	0.87
835	41.5	0.90
900	41.5	0.97
915	41.5	0.98
1450	40.5	1.20
1610	40.3	1.29
1800-2000	40.0	1.40
2450	39.2	1.80
3000	38.5	2.40
5800	35.3	5.27

(ϵ_r = relative permittivity, σ = conductivity and $\rho = 1000 \text{ kg/m}^3$)

The dielectric parameters of liquids were verified prior to the SAR evaluation using a Speag Dielectric Probe Kit and an Agilent Network Analyzer.
The following table shows the measuring results for simulating liquid.

Frequency (MHz)	Liquid Temp. (°C)	Conductivity (σ)	Permittivity (εr)	Conductivity Target(σ)	Permittivity Target(εr)	Delta (σ)%	Delta (εr)%	Limit (%)	Date (mm/dd/yy)
835	23.6	0.90	40.22	0.90	41.50	0.00	-3.09	±5	10/23/2024
1900	23.1	1.42	38.45	1.40	40.00	1.14	-3.87	±5	10/27/2024
2450	23.4	1.80	37.66	1.80	39.20	0.22	-3.92	±5	10/31/2024

10 SAR System Verification

Each DASY system is equipped with one or more system validation kits. These units, together with the predefined measurement procedures within the DASY software, enable the user to conduct the system performance check and system validation. System validation kit includes a dipole, tripod holder to fix it underneath the flat phantom and a corresponding distance holder.

➤ Purpose of System Performance check

The system performance check verifies that the system operates within its specifications. System and operator errors can be detected and corrected. It is recommended that the system performance check be performed prior to any usage of the system in order to guarantee reproducible results. The system performance check uses normal SAR measurements in a simplified setup with a well characterized source. This setup was selected to give a high sensitivity to all parameters that might fail or vary over time. The system check does not intend to replace the calibration of the components, but indicates situations where the system uncertainty is exceeded due to drift or failure.

➤ System Setup

In the simplified setup for system evaluation, the EUT is replaced by a calibrated dipole and the power source is replaced by a continuous wave that comes from a signal generator. The calibrated dipole must be placed beneath the flat phantom section of the SAM twin phantom with the correct distance holder. The distance holder should touch the phantom surface with a light pressure at the reference marking and be oriented parallel to the long side of the phantom. The equipment setup is shown below:

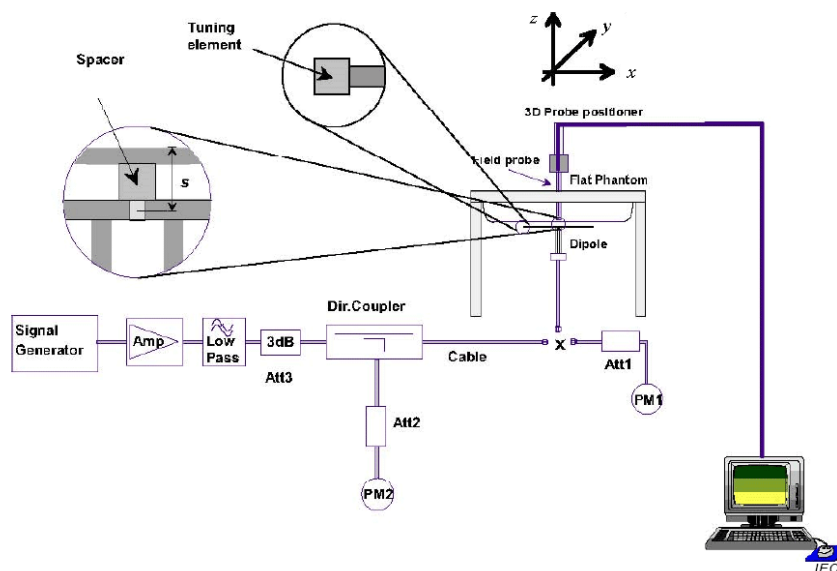


Fig.10.1 System Verification Setup Diagram

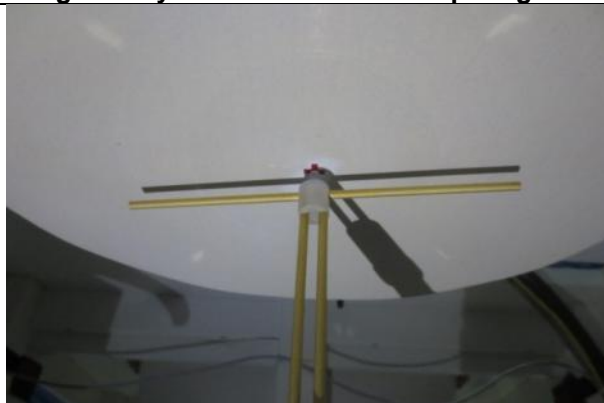


Fig.10.2 Photo of Dipole setup

➤ System Verification Results

Comparing to the original SAR value provided by SPEAG, the verification data should be within its specification of 10%. The table as below indicates the system performance check can meet the variation criterion and the plots can be referred to Appendix C of this report.

Date (mm/dd/yy)	Frequency (MHz)	Power fed onto dipole (mW)	Measured 1g SAR (W/kg)	Normalized to 1W 1g SAR (W/kg)	1W Target 1g SAR (W/kg)	Deviation (%)
10/23/2024	835	80	0.795	9.94	9.6	3.54
10/27/2024	1900	40	1.670	41.75	39.9	4.64
10/31/2024	2450	40	2.160	54.00	53.4	1.12

11 EUT Testing Position

This EUT was tested in six different positions. They are right cheek/right tilted/left cheek/left tilted for head, Front/Back Side of the EUT with phantom 10 mm gap, as illustrated below, please refer to Appendix B for the test setup photos.

11.1 Handset Reference Points

- The vertical centreline passes through two points on the front side of the handset – the midpoint of the width w_t of the handset at the level of the acoustic output, and the midpoint of the width w_b of the bottom of the handset.
- The horizontal line is perpendicular to the vertical centreline and passes the center of the acoustic output. The horizontal line is also tangential to the handset at point A.
- The two lines intersect at point A. Note that for many handsets, point A coincides with the center of the acoustic output; however, the acoustic output may be located elsewhere on the horizontal line. Also note that the vertical centreline is not necessarily parallel to the front face of the handset, especially for clamshell handsets, handsets with flip covers, and other irregularly shaped handsets.



Fig.11.1 Illustration for Front, Back and Side of SAM Phantom

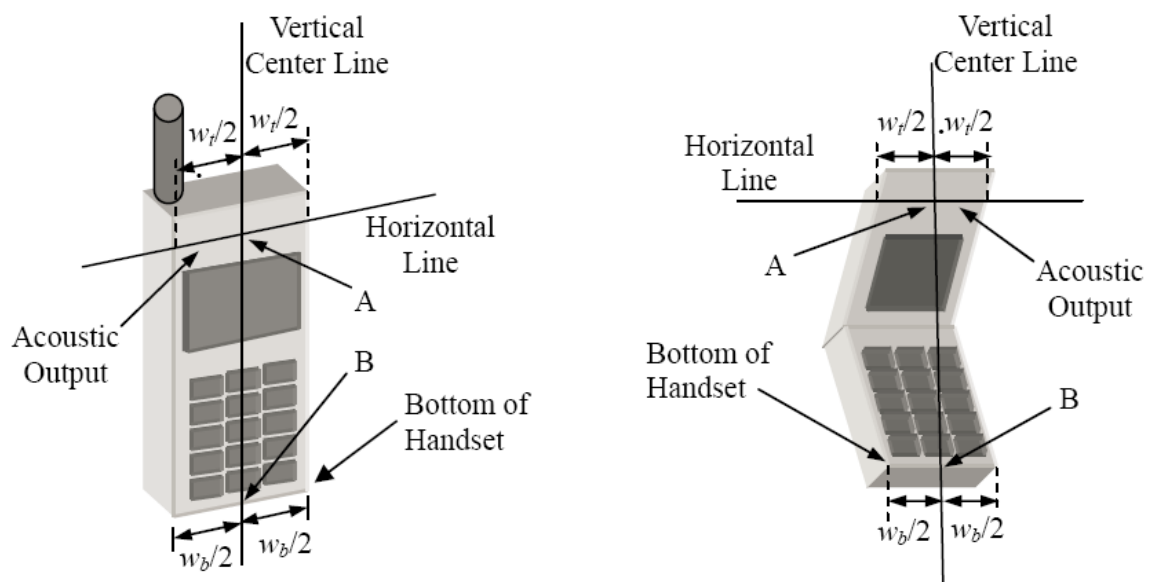


Fig. 11.2 Illustration for Handset Vertical and Horizontal Reference Lines

11.2 Positioning for Cheek / Touch

- To position the device with the vertical center line of the body of the device and the horizontal line crossing the center piece in a plane parallel to the sagittal plane of the phantom. While maintaining the device in this plane, align the vertical center line with the reference plane containing the three ear and mouth reference point (M: Mouth, RE: Right Ear and LE: Left Ear) and align the center of the ear piece with the line RE-LE.
- To move the device towards the phantom with the ear piece aligned with the line LE-RE until the phone touched the ear. While maintaining the device in the reference plane and maintaining the phone contact with the ear, move the bottom of the phone until any point on the front side is in contact with the cheek of the phantom or until contact with the ear is lost (see below figure)



Fig. 11.3 Illustration for Cheek Position

11.3 Positioning for Ear / 15o Tilt

- To position the device in the “cheek” position described above.
- While maintaining the device the reference plane described above and pivoting against the ear, moves it outward away from the mouth by an angle of 15 degrees or until contact with the ear is lost (see figure below).



Fig.11.4 Illustration for Tilted Position

11.4 SAR Evaluations near the Mouth/Jaw Regions of the SAM Phantom

Antennas located near the bottom of a phone may require SAR measurements around the mouth and jaw regions of the SAM head phantom. This typically applies to clam-shell style phones that are generally longer in the unfolded normal use positions or to certain older style long rectangular phones.

Under these circumstances, the following procedures apply, adopted from the FCC guidance on SAR handsets document FCC KDB Publication 648474 D04v01r03. The SAR required in these regions of SAM should be measured using a flat phantom. The phone should be positioned with a separation distance of 4 mm between the ear reference point (ERP) and the outer surface of the flat phantom shell. While maintaining this distance at the ERP location, the low (bottom) edge of the phone should be lowered from the phantom to establish the same separation distance between the peak SAR locations identified by the truncated partial SAR distribution measured with the SAM phantom. The distance from the peak SAR location to the phone is determined by the straight line passing perpendicularly through the phantom surface. When it is not feasible to maintain 4 mm separation at the ERP while also establishing the required separation at the peak SAR location, the top edge of the phone will be allowed to touch the phantom with a separation < 4 mm at the ERP. The phone should not be tilted to the left or right while placed in this inclined position to the flat phantom.

11.5 Body Worn Accessory Configurations

- To position the device parallel to the phantom surface with either keypad up or down.
- To adjust the device parallel to the flat phantom.
- To adjust the distance between the device surface and the flat phantom to 1.5 cm or holster surface and the flat phantom to 0 cm.

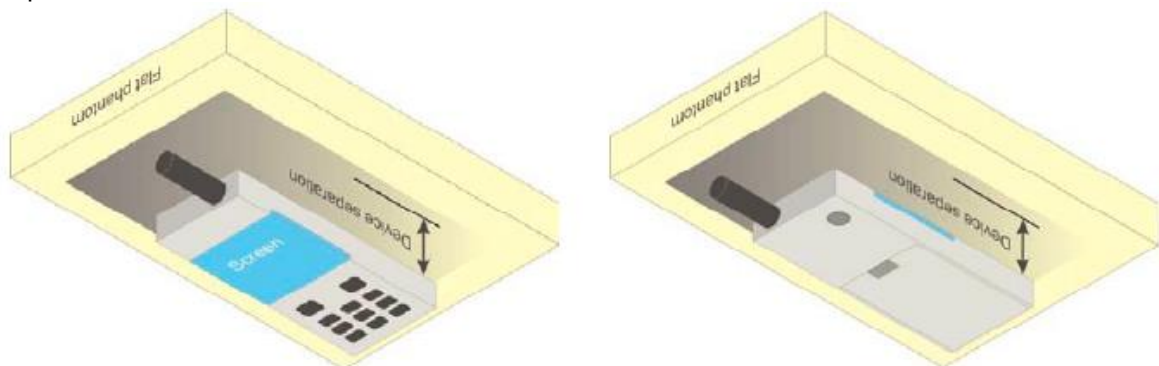


Fig.11.5 Illustration for Body Worn Position

12 Measurement Procedures

The measurement procedures are as bellows:

<Conducted power measurement>

- For WWAN power measurement, use base station simulator to configure EUT WWAN transition in conducted connection with RF cable, at maximum power in each supported wireless interface and frequency band.
- Read the WWAN RF power level from the base station simulator.
- For WLAN/BT power measurement, use engineering software to configure EUT WLAN/BT continuously transmission, at maximum RF power in each supported wireless interface and frequency band.
- Connect EUT RF port through RF cable to the power meter or spectrum analyzer, and measure WLAN/BT output power.

<Conducted power measurement>

- Use base station simulator to configure EUT WWAN transmission in radiated connection, and engineering software to configure EUT WLAN/BT continuously transmission, at maximum RF power, in the highest power channel.
- Place the EUT in positions as Appendix B demonstrates.
- Set scan area, grid size and other setting on the DASY software.
- Measure SAR results for the highest power channel on each testing position.
- Find out the largest SAR result on these testing positions of each band.
- Measure SAR results for other channels in worst SAR testing position if the Reported SAR or highest power channel is larger than 0.8 W/kg.

According to the test standard, the recommended procedure for assessing the peak spatial-average SAR value consists of the following steps:

- Power reference measurement
- Area scan
- Zoom scan
- Power drift measurement

12.1 Spatial Peak SAR Evaluation

The procedure for spatial peak SAR evaluation has been implemented according to the test standard. It can be conducted for 1g and 10g, as well as for user-specific masses. The DASY software includes all numerical procedures necessary to evaluate the spatial peak SAR value.

The base for the evaluation is a “cube” measurement. The measured volume must include the 1g and 10 g cubes with the highest averaged SAR values. For that purpose, the center of the measured volume is aligned to the interpolated peak SAR value of a previously performed area scan.

The entire evaluation of the spatial peak values is performed within the post-processing engine (SEMCAD). The system always gives the maximum values for 1g and 10g cubes. The algorithm to find the cube with highest averaged SAR is divided into the following stages:

- Extraction of the measured data (grid and values) from the Zoom Scan.
- Calculation of the SAR value at every measurement point based on all stored data (A/D values and measurement parameters).
- Generation of a high-resolution mesh within the measured volume.
- Interpolation of all measured values from the measurement grid to the high-resolution grid
- Extrapolation of the entire 3-D field distribution to the phantom surface over the distance from sensor to surface
- Calculation of the averaged SAR within masses of 1g and 10g.

12.2 Power Reference Measurement

The Power Reference Measurement and Power Drift Measurement are for monitoring the power drift of the device under test in the batch process. The minimum distance of probe sensors to surface determines the closest measurement point to phantom surface. This distance cannot be smaller than the distance of sensor calibration points to probe tip as defined in the probe properties.

12.3 Area & Zoom Scan Procedures

First Area Scan is used to locate the approximate location(s) of the local peak SAR value(s). The measurement grid within an Area Scan is defined by the grid extent, grid step size and grid offset. Next, in order to determine the EM field distribution in a three-dimensional spatial extension, Zoom Scan is required. The Zoom Scan is performed around the highest E-field value to determine the averaged SAR-distribution over 10g. Area scan and zoom scan resolution setting follows KDB 865664 D01v01r04 quoted below.

			≤ 3 GHz	> 3 GHz
Maximum distance from closest measurement point (geometric center of probe sensors) to phantom surface			5 ± 1 mm	$\frac{1}{2} \cdot \delta \cdot \ln(2) \pm 0.5$ mm
Maximum probe angle from probe axis to phantom surface normal at the measurement location			$30^\circ \pm 1^\circ$	$20^\circ \pm 1^\circ$
Maximum area scan spatial resolution: Δx_{Area} , Δy_{Area}			≤ 2 GHz: ≤ 15 mm 2 – 3 GHz: ≤ 12 mm	3 – 4 GHz: ≤ 12 mm 4 – 6 GHz: ≤ 10 mm
			When the x or y dimension of the test device, in the measurement plane orientation, is smaller than the above, the measurement resolution must be \leq the corresponding x or y dimension of the test device with at least one measurement point on the test device.	
Maximum zoom scan spatial resolution: Δx_{Zoom} , Δy_{Zoom}			≤ 2 GHz: ≤ 8 mm 2 – 3 GHz: ≤ 5 mm*	3 – 4 GHz: ≤ 5 mm* 4 – 6 GHz: ≤ 4 mm*
Maximum zoom scan spatial resolution, normal to phantom surface	uniform grid: $\Delta z_{Zoom}(n)$		≤ 5 mm	3 – 4 GHz: ≤ 4 mm 4 – 5 GHz: ≤ 3 mm 5 – 6 GHz: ≤ 2 mm
	graded grid	$\Delta z_{Zoom}(1)$: between 1 st two points closest to phantom surface	≤ 4 mm	3 – 4 GHz: ≤ 3 mm 4 – 5 GHz: ≤ 2.5 mm 5 – 6 GHz: ≤ 2 mm
		$\Delta z_{Zoom}(n>1)$: between subsequent points	$\leq 1.5 \cdot \Delta z_{Zoom}(n-1)$	
Minimum zoom scan volume	x, y, z		≥ 30 mm	3 – 4 GHz: ≥ 28 mm 4 – 5 GHz: ≥ 25 mm 5 – 6 GHz: ≥ 22 mm
Note: δ is the penetration depth of a plane-wave at normal incidence to the tissue medium; see draft standard IEEE P1528-2011 for details.				
* When zoom scan is required and the <u>reported</u> SAR from the <u>area scan based 1-g SAR estimation</u> procedures of KDB 447498 is ≤ 1.4 W/kg, ≤ 8 mm, ≤ 7 mm and ≤ 5 mm zoom scan resolution may be applied, respectively, for 2 GHz to 3 GHz, 3 GHz to 4 GHz and 4 GHz to 6 GHz.				

12.4 Volume Scan Procedures

The volume scan is used for assess overlapping SAR distributions for antennas transmitting in different frequency bands. It is equivalent to an oversized zoom scan used in standalone measurements. The measurement volume will be used to enclose all the simultaneous transmitting antennas. For antennas transmitting simultaneously in different frequency bands, the volume scan is measured separately in each frequency band. In order to sum correctly to compute the 1g aggregate SAR, the EUT remain in the same test position for all measurements and all volume scan use the same spatial resolution and grid spacing. When all volume scan were completed, the software, SEMCAD post-processor scan combine and subsequently superpose these measurement data to calculating the multiband SAR.

12.5 SAR Averaged Methods

In DASy, the interpolation and extrapolation are both based on the modified Quadratic Shepard's method. The interpolation scheme combines a least-square fitted function method and a weighted average method which are the two basic types of computational interpolation and approximation.

Extrapolation routines are used to obtain SAR values between the lowest measurement points and the inner phantom surface. The extrapolation distance is determined by the surface detection distance and the probe sensor offset. The uncertainty increases with the extrapolation distance. To keep the uncertainty within 1% for the 1g and 10g cubes, the extrapolation distance should not be larger than 5 mm.

12.6 Power Drift Monitoring

All SAR testing is under the EUT install full charged battery and transmit maximum output power. In DASy measurement software, the power reference measurement and power drift measurement procedures are used for monitoring the power drift of EUT during SAR test. Both these procedures measure the field at a specified reference position before and after the SAR testing. The software will calculate the field difference in dB. If the power drifts more than 5%, the SAR will be retested.

13 Conducted RF Output Power

13.1 GSM Conducted Power

Band: GSM 850	Burst Average Power (dBm)			Frame-Average Power(dBm)		
Channel	128	190	251	128	190	251
Frequency (MHz)	824.2	836.6	848.8	824.2	836.6	848.8
GSM (GMSK, Voice)	33.81	34.10	33.78	24.78	25.07	24.75
GPRS (GMSK, 1 TX slot)	33.65	33.92	33.60	24.62	24.89	24.57
GPRS (GMSK, 2 TX slots)	31.84	32.09	31.93	25.82	26.07	25.91
GPRS (GMSK, 3 TX slots)	30.31	30.56	30.43	26.05	26.30	26.17
GPRS (GMSK, 4 TX slots)	28.63	28.86	28.72	25.62	25.85	25.71

Remark:

- The frame-averaged power is linearly reported the maximum burst averaged power over 8 time slots. The calculated method are shown as below:
The duty cycle "x" of different time slots as below:
1 TX slot is 1/8, 2 TX slots is 2/8, 3 TX slots is 3/8 and 4 TX slots is 4/8
Based on the calculation formula:
Frame-averaged power = Burst averaged power + 10 log (x)
So,
Frame-averaged power (1 TX slot) = Burst averaged power (1 TX slot)– 9.03
Frame-averaged power (2 TX slots) = Burst averaged power (2 TX slots)– 6.02
Frame-averaged power (3 TX slots) = Burst averaged power (3 TX slots)– 4.26
Frame-averaged power (4 TX slots) = Burst averaged power (4 TX slots) – 3.01
- CS1 coding scheme was used in GPRS conducted power measurements and SAR testing, MCS5 coding scheme was used in EGPRS conducted power measurements and SAR testing (if necessary).

Note:

- For Head SAR testing, GSM Voice mode should be evaluated, therefore the EUT was set in GSM 850 Voice mode.
- For Body worn SAR testing, GPRS and EGPRS mode should be evaluated, therefore the EUT was set in GPRS 3 TX slots mode due to the highest frame-averaged power.
- For GPRS multi time slots SAR measurement, when the measured maximum output power levels are within 0.25 dB of each other, test the configuration with the most number of time slots.
- Per KDB447498 D04v01, the maximum output power channel is used for SAR testing and for further SAR test reduction.
- The EUT do not support DTM.

Band: PCS 1900	Burst Average Power (dBm)			Frame-Average Power(dBm)		
Channel	512	661	810	512	661	810
Frequency (MHz)	1850.2	1880.0	1909.8	1850.2	1880.0	1909.8
GSM (GMSK, Voice)	30.24	30.65	30.53	21.21	21.62	21.50
GPRS (GMSK, 1 TX slot)	30.70	30.81	31.15	21.67	21.78	22.12
GPRS (GMSK, 2 TX slots)	28.56	28.83	29.29	22.54	22.81	23.27
GPRS (GMSK, 3 TX slots)	27.24	27.48	27.97	22.98	23.22	23.71
GPRS (GMSK, 4 TX slots)	25.49	25.72	26.18	22.48	22.71	23.17

Remark:

- The frame-averaged power is linearly reported the maximum burst averaged power over 8 time slots. The calculated method are shown as below:
The duty cycle "x" of different time slots as below:
1 TX slot is 1/8, 2 TX slots is 2/8, 3 TX slots is 3/8 and 4 TX slots is 4/8
Based on the calculation formula:
Frame-averaged power = Burst averaged power + 10 log (x)
So,
Frame-averaged power (1 TX slot) = Burst averaged power (1 TX slot) – 9.03
Frame-averaged power (2 TX slots) = Burst averaged power (2 TX slots) – 6.02
Frame-averaged power (3 TX slots) = Burst averaged power (3 TX slots) – 4.26
Frame-averaged power (4 TX slots) = Burst averaged power (4 TX slots) – 3.01
- CS1 coding scheme was used in GPRS conducted power measurements and SAR testing, MCS5 coding scheme was used in EGPRS conducted power measurements and SAR testing (if necessary).Frame-averaged power (4 TX slots) = Burst averaged power (4 TX slots) – 3.01

Note:

- For Head SAR testing, GSM Voice mode should be evaluated, therefore the EUT was set in PCS 1900 Voice mode.
- For Body worn SAR testing, GPRS and EGPRS mode should be evaluated, therefore the EUT was set in GPRS 3 TX slots mode due to the highest frame-averaged power.
- Per KDB447498 D04v01, the maximum output power channel is used for SAR testing and for further SAR test reduction.
- The EUT do not support DTM.

13.2 Bluetooth Conducted Power

Average Power (dBm)(Bluetooth)				
Channel	Frequency (MHz)	GFSK	$\pi/4$ -DQPSK	8DPSK
CH 00	2402	5.77	6.87	7.42
CH 39	2441	4.99	6.20	6.81
CH 78	2480	4.32	5.35	5.81

Note:

- SAR test of Bluetooth is performed and the mode with highest average power is selected for SAR testing.
- Per KDB 447498 D04v01 section 2.1.2: 1-mW Test Exemption, SAR test for BLE is not required.
- The output power of all data rate were pre-scan, just the worst case of all mode were shown in report.
- Per KDB 248227 D01V02r02 section 2.2, when the EUT in continuously transmitting mode, the actual duty cycle is 100%, so the duty cycle factor is 1.

14 SAR Test Results Summary

14.1 Standalone Head SAR Data

➤ GSM Head SAR

Plot No.	Band/Mode	Test Position	CH.	Freq. (MHz)	Ave. Power (dBm)	Power Drift (dB)	Tune-Up Limit (dBm)	Meas. SAR _{1g} (W/kg)	Scaling Factor	Reported SAR _{1g} (W/kg)
	GSM850/Voice	Right Cheek	190	836.6	34.10	0.04	34.5	0.803	1.096	0.880
	GSM850/Voice	Right Tilted	190	836.6	34.10	0.03	34.5	0.294	1.096	0.322
1	GSM850/Voice	Left Cheek	190	836.6	34.10	0.00	34.5	0.862	1.096	0.945
	GSM850/Voice	Left Tilted	190	836.6	34.10	-0.05	34.5	0.294	1.096	0.322
	GSM850/Voice	Right Cheek	128	824.2	33.81	-0.05	34.5	0.784	1.172	0.919
	GSM850/Voice	Right Cheek	251	848.8	33.78	-0.01	34.5	0.843	1.18	0.995
	GSM850/Voice	Left Cheek	128	824.2	33.81	0.06	34.5	0.700	1.172	0.820
	GSM850/Voice	Left Cheek	251	848.8	33.78	-0.01	34.5	0.779	1.18	0.919
	GSM850/Voice	Left Cheek	190	836.6	34.10	0.03	34.5	0.857	1.096	0.939
	PCS1900/Voice	Right Cheek	661	1880	30.65	-0.09	31.0	0.434	1.084	0.470
	PCS1900/Voice	Right Tilted	661	1880	30.65	0.01	31.0	0.228	1.084	0.247
2	PCS1900/Voice	Left Cheek	661	1880	30.65	0.03	31.0	0.437	1.084	0.474
	PCS1900/Voice	Left Tilted	661	1880	30.65	-0.15	31.0	0.242	1.084	0.262
ANSI / IEEE C95.1 – SAFETY LIMIT					1.6 W/kg (mW/g)					
Spatial Peak					Averaged over 1g					
Uncontrolled Exposure/General Population										

➤ Bluetooth Head SAR

Plot No.	Band/Mode	Test Position	CH.	Freq. (MHz)	Ave. Power (dBm)	Power Drift (dB)	Tune-Up Limit (dBm)	Meas. SAR _{1g} (W/kg)	Scaling Factor	D.C Factor	Reported SAR _{1g} (W/kg)
	BT/GFSK	Right Cheek	0	2402	7.42	0.00	7.5	<0.001*	1.019	1.000	<0.001*
	BT/GFSK	Right Tilted	0	2402	7.42	0.00	7.5	<0.001*	1.019	1.000	<0.001*
	BT/GFSK	Left Cheek	0	2402	7.42	0.00	7.5	<0.001*	1.019	1.000	<0.001*
	BT/GFSK	Left Tilted	0	2402	7.42	0.00	7.5	<0.001*	1.019	1.000	<0.001*
ANSI / IEEE C95.1 – SAFETY LIMIT Spatial Peak Uncontrolled Exposure/General Population					1.6 W/kg (mW/g) Averaged over 1g						

Note:

1. Per KDB 447498 D04v01, for each exposure position, if the highest output power channel Reported SAR ≤ 0.8W/kg, other channels SAR testing is not necessary.
2. Per KDB 865664 D01v01r04, for each frequency band, repeated SAR measurement is required when the measured SAR is ≥ 0.8W/kg.
3. According to KDB 865664 D02v01r02, SAR plot is required for the highest measured SAR in each exposure configuration, wireless mode and frequency band combination.

14.2 Standalone Body SAR

➤ GSM Body SAR

Plot No.	Band/Mode	Test Position	CH.	Freq. (MHz)	Ave. Power (dBm)	Power Drift (dB)	Tune-Up Limit (dBm)	Meas. SAR _{1g} (W/kg)	Scaling Factor	Reported SAR _{1g} (W/kg)
	GPRS850/3 slots	Front	190	836.6	30.56	0.03	31.0	0.710	1.107	0.786
	GPRS850/3 slots	Back	190	836.6	30.56	-0.16	31.0	0.983	1.107	1.088
3	GPRS850/3 slots	Back	128	824.2	30.31	0.06	31.0	1.070	1.172	1.254
	GPRS850/3 slots	Back	251	848.8	30.43	0.03	31.0	0.925	1.140	1.055
	GPRS850/3 slots	Back	128	824.2	30.31	0.04	31.0	1.050	1.172	1.231
	GPRS850/3 slots with headset	Back	251	848.8	30.43	-0.14	31.0	0.735	1.140	0.838
	GPRS1900/3 slots	Front	810	1909.8	23.71	0.02	24.0	0.561	1.069	0.600
4	GPRS1900/3 slots	Back	810	1909.8	23.71	-0.01	24.0	0.645	1.069	0.690
ANSI / IEEE C95.1 – SAFETY LIMIT Spatial Peak Uncontrolled Exposure/General Population					1.6 W/kg (mW/g) Averaged over 1g					

➤ Bluetooth Body SAR

Plot No.	Band/Mode	Test Position	CH.	Freq. (MHz)	Ave. Power (dBm)	Power Drift (dB)	Tune-Up Limit (dBm)	Meas. SAR _{1g} (W/kg)	Scaling Factor	D.C Factor	Reported SAR _{1g} (W/kg)
	BT/8DPSK	Front	0	2402	7.42	0.00	7.5	<0.001*	1.019	1.000	<0.001*
	BT/8DPSK	Back	0	2402	7.42	0.00	7.5	<0.001*	1.019	1.000	<0.001*
ANSI / IEEE C95.1 – SAFETY LIMIT Spatial Peak Uncontrolled Exposure/General Population					1.6 W/kg (mW/g) Averaged over 1g						

Note:

- Body-worn SAR testing was performed at 10mm separation, and this distance is determined by the handset manufacturer that there will be body-worn accessories that users may acquire at the time of equipment certification, to enable users to purchase aftermarket body-worn accessories with the required minimum separation.
- Per KDB 648474 D04v01r03, when the *Reported* SAR for a body-worn accessory measured without a headset connected to the handset is ≤ 1.2 W/kg, SAR testing with a headset connected to the handset is not required.
- Per KDB 447498 D04v01, for each exposure position, if the highest output channel Reported SAR ≤ 0.8 W/kg, other channels SAR testing is not necessary.
- Per KDB 865664 D01v01r04, for each frequency band, repeated SAR measurement is required when the measured SAR is ≥ 0.8 W/kg.
- According to KDB 865664 D02v01r02, SAR plot is required for the highest measured SAR in each exposure configuration, wireless mode and frequency band combination.
- Highlight part of test data means repeated test.

14.3 Repeated SAR measurement

Band/ Mode	Test Position	CH.	Freq. (MHz)	Measured SAR (W/kg)				
				Original	1 st Repeated		2 nd Repeated	
					Value	Ratio	Value	Ratio
GSM850/Voice	Left Cheek	190	836.6	0.862	0.857	1.01	/	/
GPRS850/3 slots	Back	128	824.2	1.07	1.05	1.02	/	/
ANSI / IEEE C95.1 – SAFETY LIMIT Spatial Peak Uncontrolled Exposure/General Population				1.6 W/kg (mW/g) Averaged over 1g				

Note:

- Per KDB 865664 D01v01r04, for each frequency band, repeated SAR measurement is required only when the measured SAR is ≥ 0.8 W/kg
- Per KDB 865664 D01v01r04, if the ratio of *original* and *repeated* is ≤ 1.2 and the measured SAR < 1.45 W/kg, only one repeated measurement is required.

14.4 DUT holder perturbation uncertainty evaluation

1. According to TCB workshop, Oct 2016:
When the highest reported SAR of an antenna is > 1.2 W/kg, holder perturbation verification is required for each antenna, using the highest SAR configuration among all applicable frequency bands.
2. According to IEC/IEEE 62209-1528 section R.2.2, When it is unknown if a device holder perturbs the fields of a test device, the SAR uncertainty shall be assessed with a flat phantom (see Clause 5) by comparing the SAR with and without the device holder according to the following tests:
 - a) With device holder: 1 g or 10 g peak spatial-average SAR is measured with the handset fixed in the holder in a manner similar to the way it was held when tested for the head SAR position. The handset horizontal and vertical centerlines (see Clause 6) are aligned parallel to the bottom of the flat phantom and the device is in direct contact with the phantom. The test shall be performed with the antenna position and device operational configuration corresponding to that where the highest head SAR was previously measured for each frequency band.
 - b) Without device holder: 1 g or 10 g peak spatial-average SAR is measured with the handset placed on a low-loss foam block or support in the position identical to that tested with the device holder. The relative permittivity and loss tangent of the foam material shall be less than 1.2 and 10⁻⁵, respectively.

Test result:

Plot	Band/ Mode	Test Position	CH.	Freq. (MHz)	Test configuration	Measured SAR (W/kg) Averaged over 1g
5	GPRS850/3 slots	Back	251	848.8	With device holder	4.54
6	GPRS850/3 slots	Back	251	848.8	Without device holder	4.39

Note:

1. The plots of test result please check

The following equation is used to computed the SAR tolerance,

$$SAR_{\text{tolerance}} [\%] = 100 \times \left(\frac{SAR_{\text{w/ holder}} - SAR_{\text{w/o holder}}}{SAR_{\text{w/o holder}}} \right)$$

Therefore, the $SAR_{\text{tolerance}} = 100 \times [(4.54 - 4.39) / 4.39] = 3.42\%$.

14.5 Multi-Band Simultaneous Transmission Considerations

➤ Simultaneous Transmission Capabilities

According to FCC KDB Publication 447498 D04v01, transmitters are considered to be transmitting simultaneously when there is overlapping transmission, with the exception of transmissions during network hand-offs with maximum hand-off duration less than 30 seconds. Possible transmission paths for the EUT are shown in below Figure and are color-coded to indicate communication modes which share the same path. Modes which share the same transmission path cannot transmit simultaneously with one another.



Fig.15.1 Simultaneous Transmission Paths

➤ Multi-Band simultaneous Transmission Consideration

Simultaneous Transmission Consideration	Position	Applicable Combination
	Head	WWAN + Bluetooth
	Body	WWAN + Bluetooth

Note:

- The Report SAR summation is calculated based on the same configuration and test position.
- Per KDB 447498 D04v01, simultaneous transmission SAR is compliant if,
 - Scalar SAR summation $< 1.6 \text{ W/kg}$.
 - $\text{SPLSR} = (\text{SAR}_1 + \text{SAR}_2)^{1.5} / (\text{min. separation distance, mm})$, and the peak separation distance is determined from the square root of $[(x_1 - x_2)^2 + (y_1 - y_2)^2 + (z_1 - z_2)^2]$, where (x_1, y_1, z_1) and (x_2, y_2, z_2) are the coordinates of the extrapolated peak SAR locations in the zoom scan. If $\text{SPLSR} \leq 0.04$, simultaneously transmission SAR measurement is not necessary.
 - Simultaneously transmission SAR measurement, and the Reported multi-band SAR $< 1.6 \text{ W/kg}$.

14.6 SAR Simultaneous Transmission Analysis

➤ Simultaneous Transmission

Position		Standalone SAR(W/kg)		? SAR _{1g} (W/kg)
		1	2	1+2
		WWAN	BT	
Head	Right Cheek	0.995	0.000	0.995
	Right Tilted	0.322	0.000	0.322
	Left Cheek	0.945	0.000	0.945
	Left Tilted	0.322	0.000	0.322
Body-worn	Front	0.786	0.000	0.786
	Back	1.254	0.000	1.254

➤ Simultaneous Transmission Conclusion

The above numerical summed SAR results for all the case simultaneous transmission conditions were below the SAR limit. Therefore, the above analysis is sufficient to determine that simultaneous transmission cases will not exceed the SAR limit and therefore no measured volumetric simultaneous SAR summation is required per FCC KDB Publication 447498 D04v01.

14.7 Measurement Uncertainty

Per KDB865664 D01 SAR Measurement 100 MHz to 6 GHz v01r04, when the highest measured 1-g SAR within a frequency band is $< 1.5 \text{ W/kg}$, the extensive SAR measurement uncertainty analysis described in IEC/IEEE 62209-1528 is not required in SAR reports submitted for equipment approval. The equivalent ratio (1.5/1.6) is applied to extremity and occupational exposure conditions.

14.8 Measurement Conclusion

The SAR evaluation indicates that the EUT complies with the RF radiation exposure limits of the FCC and Industry Canada, with respect to all parameters subject to this test. These measurements were taken to simulate the RF effects of RF exposure under worst-case conditions. Precise laboratory measures were taken to assure repeatability of the tests. The results and statements relate only to the item(s) tested. Please note that the absorption and distribution of electromagnetic energy in the body are very complex phenomena that depend on the mass, shape, and size of the body, the orientation of the body with respect to the field vectors, and the electrical properties of both the body and the environment. Other variables that may play a substantial role in possible biological effects are those that characterize the environment (e.g. ambient temperature, air velocity, relative humidity, and body insulation) and those that characterize the individual (e.g. age, gender, activity level, debilitation, or disease). Because various factors may interact with one another to vary the specific biological outcome of an exposure to electromagnetic fields, any protection guide should consider maximal amplification of biological effects as a result of field-body interactions, environmental conditions, and physiological variables.

15 Reference

- [1]. FCC 47 CFR Part 2 “Frequency Allocations and Radio Treaty Matters; General Rules and Regulations”
- [2]. ANSI/IEEE Std. C95.1-1992, “IEEE Standard for Safety Levels with Respect to Human Exposure to Radio Frequency Electromagnetic Fields, 3 kHz to 300 GHz”, September 1992
- [3]. IEC/IEEE 62209-1528, “Measurement procedure for the assessment of specific absorption rate of human exposure to radio frequency fields from hand-held and body-mounted wireless communication devices – Part 1528: Human models, instrumentation, and procedures (Frequency range of 4 MHz to 10 GHz)”, October 2020
- [4]. OpenSAR V5 Software User Manual
- [5]. FCC KDB 447498 D04 v01, “RF EXPOSURE PROCEDURES AND EQUIPMENT AUTHORIZATION POLICIES FOR MOBILE AND PORTABLE DEVICES”, November 2021
- [6]. FCC KDB 648474 D04 v01r03, “SAR EVALUATION CONSIDERATIONS FOR WIRELESS HANDSETS”, October 2015
- [7]. FCC KDB 941225 D03 v01, “Recommended SAR Test Reduction Procedures for GSM / GPRS / EDGE”, December 2008
- [8]. FCC KDB 865664 D01 v01r04, “SAR MEASUREMENT REQUIREMENTS FOR 100 MHz TO 6 GHz”, August 2015

Appendix A: Plots of SAR System Check

Test Laboratory: JYTSZ

Date: 10.23.2024

DUT: Dipole 835 MHz; Type: D835V2; Serial: SN:4D154

Communication System: UID 0, CW (0); Frequency: 835 MHz; Duty Cycle: 1:1

Medium parameters used (interpolated): $f = 835$ MHz; $\sigma = 0.9$ S/m; $\epsilon_r = 40.216$; $\rho = 1000$ kg/m³

Phantom section: Flat Section

DASY5 Configuration:

- Probe: EX3DV4 - SN7601; ConvF(10.3, 10.3, 10.3) @ 835 MHz; Calibrated: 01.29.2024
- Sensor-Surface: 1.4mm (Mechanical Surface Detection)
- Electronics: DAE4 Sn1373; Calibrated: 11.27.2023
- Phantom: SAM-Twin; Type: QD 000 P40 CD; Serial: 1885
- Measurement SW: DASY52, Version 52.10 (4); SEMCAD X Version 14.6.14 (7501)

System Performance Check at Frequency 835 MHz Head Tissue/d=15mm, Pin=80 mW, dist=1.4mm (EX-Probe)/Area Scan (41x141x1): Interpolated grid: dx=1.500 mm, dy=1.500 mm

Maximum value of SAR (interpolated) = 1.11 W/kg

System Performance Check at Frequency 835 MHz Head Tissue/d=15mm, Pin=80 mW, dist=1.4mm (EX-Probe)/Zoom Scan (7x7x7) (5x5x7)/Cube 0:

Measurement grid: dx=8mm, dy=8mm, dz=5mm

Reference Value = 35.22 V/m; Power Drift = 0.17 dB

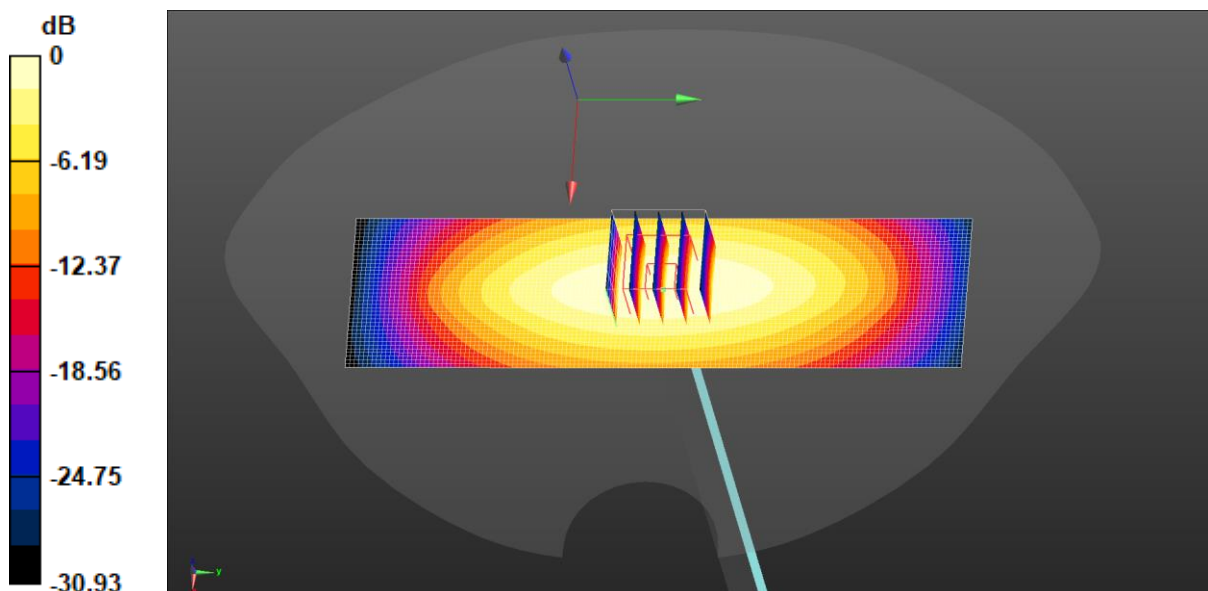
Peak SAR (extrapolated) = 1.27 W/kg

SAR(1 g) = 0.795 W/kg; SAR(10 g) = 0.517 W/kg

Smallest distance from peaks to all points 3 dB below = 16.1 mm

Ratio of SAR at M2 to SAR at M1 = 63.2%

Maximum value of SAR (measured) = 1.11 W/kg



$$0 \text{ dB} = 1.11 \text{ W/kg} = 0.45 \text{ dBW/kg}$$

Test Laboratory: JYTSZ

Date: 10.27.2024

DUT: Dipole 1900 MHz; Type: D1900V2; Serial: SN:5d175

Communication System: UID 0, CW (0); Frequency: 1900 MHz; Duty Cycle: 1:1

Medium parameters used: $f = 1900$ MHz; $\sigma = 1.416$ S/m; $\epsilon_r = 38.454$; $\rho = 1000$ kg/m³

Phantom section: Flat Section

DASY5 Configuration:

- Probe: EX3DV4 - SN7601; ConvF(8.44, 8.44, 8.44) @ 1900 MHz; Calibrated: 01.29.2024
- Sensor-Surface: 1.4mm (Mechanical Surface Detection)
- Electronics: DAE4 Sn1373; Calibrated: 11.27.2023
- Phantom: SAM-Twin; Type: QD 000 P40 CD; Serial: 1885
- Measurement SW: DASY52, Version 52.10 (4); SEMCAD X Version 14.6.14 (7501)

System Performance Check at Frequency 1900 MHz Head Tissue/d=10mm, Pin=40 mW, dist=1.4mm (EX-Probe)/Area Scan (41x71x1): Interpolated grid: dx=1.500 mm, dy=1.500 mm

Maximum value of SAR (interpolated) = 2.75 W/kg

System Performance Check at Frequency 1900 MHz Head Tissue/d=10mm, Pin=40 mW, dist=1.4mm (EX-Probe)/Zoom Scan (7x7x7) (5x5x7)/Cube 0:

Measurement grid: dx=8mm, dy=8mm, dz=5mm

Reference Value = 41.96 V/m; Power Drift = -0.15 dB

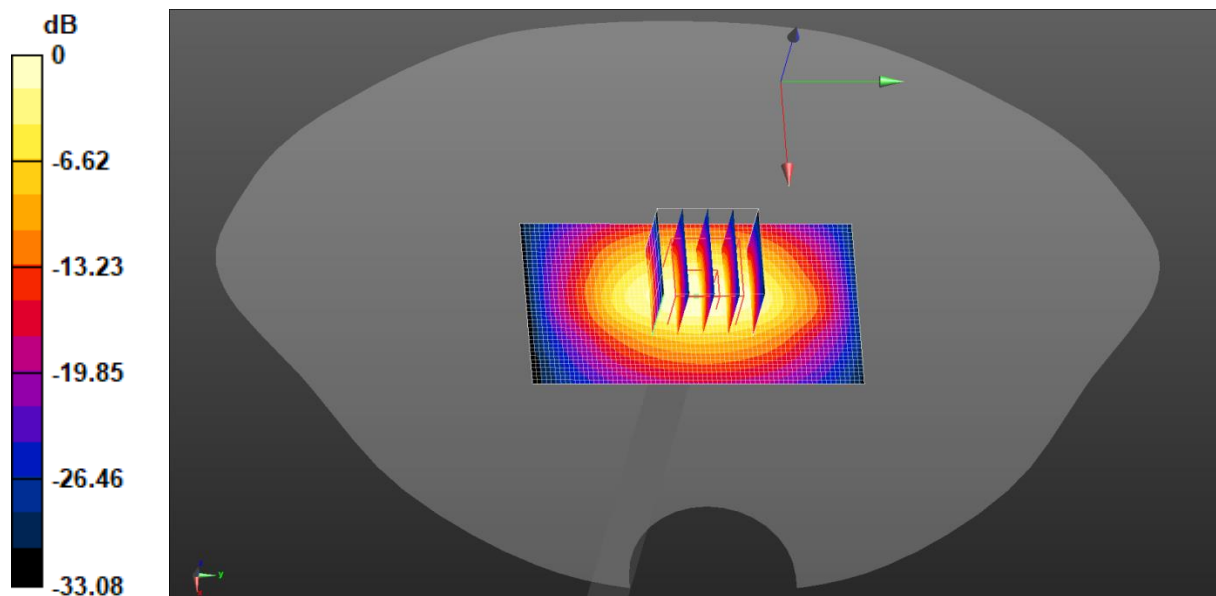
Peak SAR (extrapolated) = 3.18 W/kg

SAR(1 g) = 1.67 W/kg; SAR(10 g) = 0.891 W/kg

Smallest distance from peaks to all points 3 dB below = 9.6 mm

Ratio of SAR at M2 to SAR at M1 = 53.3%

Maximum value of SAR (measured) = 2.68 W/kg



0 dB = 2.75 W/kg = 4.39 dBW/kg

Test Laboratory: JYTSZ

Date: 10.31.2024

DUT: Dipole 2450 MHz; Type: D2450V2; Serial: SN:910

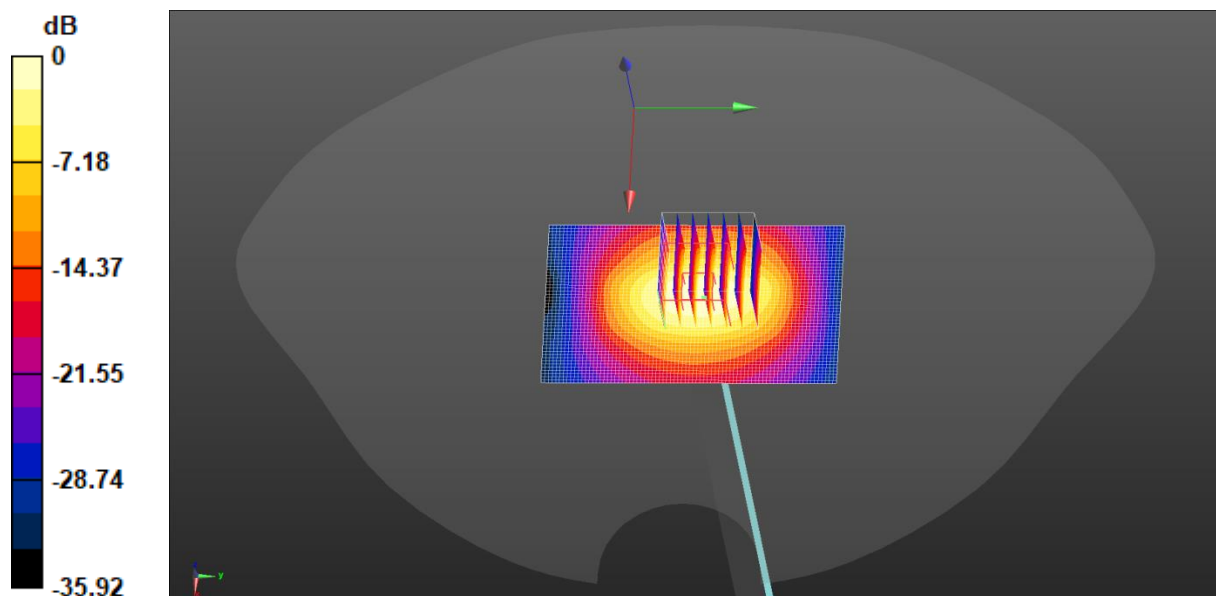
Communication System: UID 0, CW (0); Frequency: 2450 MHz; Duty Cycle: 1:1
Medium parameters used: $f = 2450$ MHz; $\sigma = 1.804$ S/m; $\epsilon_r = 37.663$; $\rho = 1000$ kg/m³
Phantom section: Flat Section

DASY5 Configuration:

- Probe: EX3DV4 - SN7601; ConvF(7.89, 7.89, 7.89) @ 2450 MHz; Calibrated: 01.29.2024
- Sensor-Surface: 1.4mm (Mechanical Surface Detection)
- Electronics: DAE4 Sn1373; Calibrated: 11.27.2023
- Phantom: SAM-Twin; Type: QD 000 P40 CD; Serial: 1885
- Measurement SW: DASY52, Version 52.10 (4); SEMCAD X Version 14.6.14 (7501)

System Performance Check at Frequency 2450 MHz Head Tissue/d=10mm, Pin=40 mW, dist=1.4mm (EX-Probe)/Area Scan (51x81x1): Interpolated grid: dx=1.200 mm, dy=1.200 mm
Maximum value of SAR (interpolated) = 3.77 W/kg

System Performance Check at Frequency 2450 MHz Head Tissue/d=10mm, Pin=40 mW, dist=1.4mm (EX-Probe)/Zoom Scan (7x7x7)/Cube 0: Measurement grid: dx=5mm, dy=5mm, dz=5mm
Reference Value = 43.84 V/m; Power Drift = 0.06 dB
Peak SAR (extrapolated) = 4.52 W/kg
SAR(1 g) = 2.16 W/kg; SAR(10 g) = 1.03 W/kg
Smallest distance from peaks to all points 3 dB below = 8.9 mm
Ratio of SAR at M2 to SAR at M1 = 49.8%
Maximum value of SAR (measured) = 3.52 W/kg



0 dB = 3.77 W/kg = 5.76 dBW/kg

Appendix B: Plots of SAR Test Data

Test Laboratory: JYTSZ

Date: 10.23.2024

DUT: 2G Feature Phone; Type: Shield; Serial: SZR012400516-3

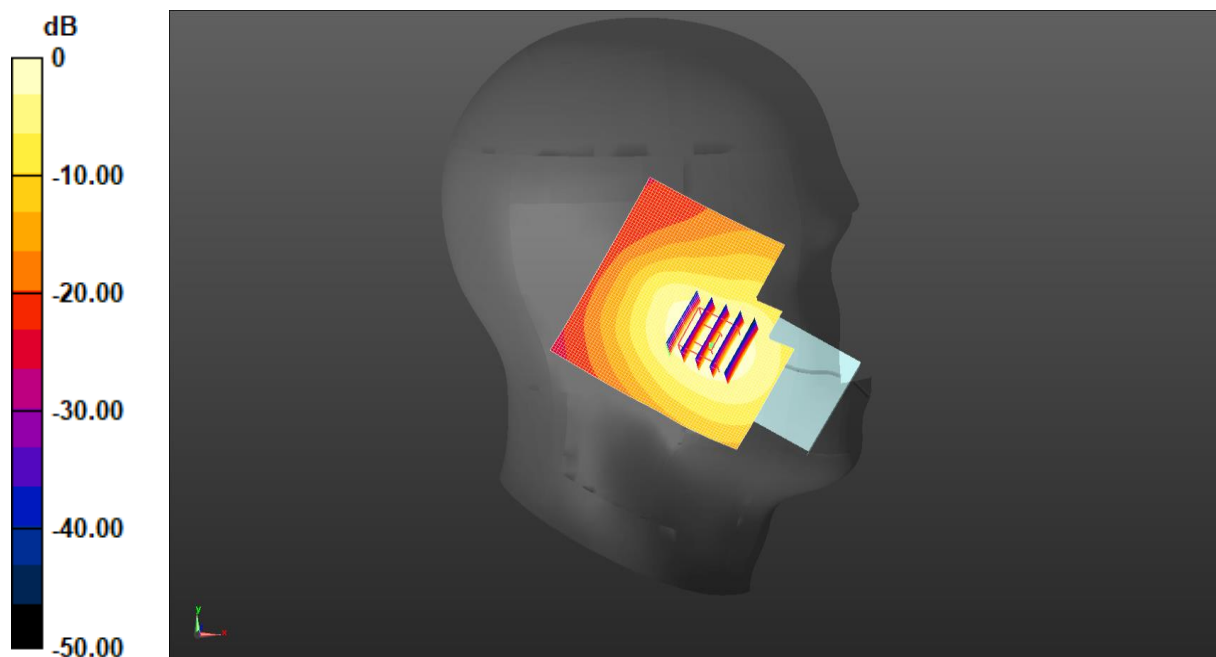
Communication System: UID 0, GSM (0); Frequency: 836.6 MHz; Duty Cycle: 1:8.30042
Medium parameters used (interpolated): $f = 836.6 \text{ MHz}$; $\sigma = 0.897 \text{ S/m}$; $\epsilon_r = 40.213$; $\rho = 1000 \text{ kg/m}^3$
Phantom section: Left Section

DASY5 Configuration:

- Probe: EX3DV4 - SN7601; ConvF(10.3, 10.3, 10.3) @ 836.6 MHz; Calibrated: 01.29.2024
- Sensor-Surface: 1.4mm (Mechanical Surface Detection)
- Electronics: DAE4 Sn1373; Calibrated: 11.27.2023
- Phantom: SAM-Twin; Type: QD 000 P40 CD; Serial: 1885
- Measurement SW: DASY52, Version 52.10 (4); SEMCAD X Version 14.6.14 (7501)

GSM 850 Left Cheek/Middle Channel/Area Scan (71x71x1): Interpolated grid:
 $dx=1.500 \text{ mm}$, $dy=1.500 \text{ mm}$
Maximum value of SAR (interpolated) = 1.29 W/kg

GSM 850 Left Cheek/Middle Channel/Zoom Scan (5x5x7)/Cube 0: Measurement
grid: $dx=8\text{mm}$, $dy=8\text{mm}$, $dz=5\text{mm}$
Reference Value = 6.057 V/m; Power Drift = -0.00 dB
Peak SAR (extrapolated) = 1.37 W/kg
SAR(1 g) = 0.862 W/kg; SAR(10 g) = 0.559 W/kg
Smallest distance from peaks to all points 3 dB below = 14.5 mm
Ratio of SAR at M2 to SAR at M1 = 62.9%
Maximum value of SAR (measured) = 1.19 W/kg



$$0 \text{ dB} = 1.29 \text{ W/kg} = 1.09 \text{ dBW/kg}$$

Test Laboratory: JYTSZ

Date: 10.27.2024

DUT: 2G Feature Phone; Type: Shield; Serial: SZR012400516-3

Communication System: UID 0, GSM (0); Frequency: 1880 MHz; Duty Cycle: 1:8.30042

Medium parameters used: $f = 1880 \text{ MHz}$; $\sigma = 1.403 \text{ S/m}$; $\epsilon_r = 38.483$; $\rho = 1000 \text{ kg/m}^3$

Phantom section: Left Section

DASY5 Configuration:

- Probe: EX3DV4 - SN7601; ConvF(8.44, 8.44, 8.44) @ 1880 MHz; Calibrated: 01.29.2024
- Sensor-Surface: 1.4mm (Mechanical Surface Detection)
- Electronics: DAE4 Sn1373; Calibrated: 11.27.2023
- Phantom: SAM-Twin; Type: QD 000 P40 CD; Serial: 1885
- Measurement SW: DASY52, Version 52.10 (4); SEMCAD X Version 14.6.14 (7501)

GSM 1900 Left Cheek/Middle Channel/Area Scan (71x71x1): Interpolated grid:

$dx=1.500 \text{ mm}$, $dy=1.500 \text{ mm}$

Maximum value of SAR (interpolated) = 0.632 W/kg

GSM 1900 Left Cheek/Middle Channel/Zoom Scan (5x5x7)/Cube 0:

Measurement grid: $dx=8\text{mm}$, $dy=8\text{mm}$, $dz=5\text{mm}$

Reference Value = 3.386 V/m ; Power Drift = 0.03 dB

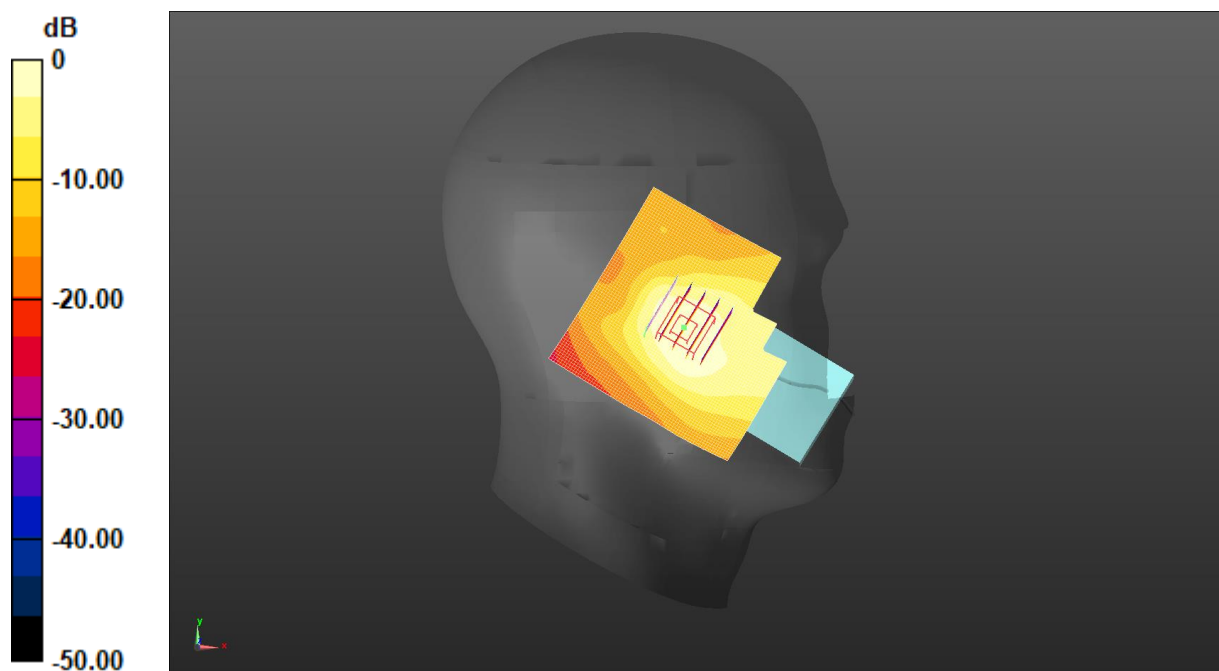
Peak SAR (extrapolated) = 0.634 W/kg

SAR(1 g) = 0.437 W/kg ; SAR(10 g) = 0.267 W/kg

Smallest distance from peaks to all points 3 dB below = 14.7 mm

Ratio of SAR at M2 to SAR at M1 = 68.5%

Maximum value of SAR (measured) = 0.546 W/kg



0 dB = 0.632 W/kg = -1.99 dBW/kg

Test Laboratory: JYTSZ

Date: 10.23.2024

DUT: 2G Feature Phone; Type: Shield; Serial: SZR012400516-3

Communication System: UID 0, GPRS(3 Slots) (0); Frequency: 824.2 MHz; Duty Cycle: 1:2.77971

Medium parameters used (interpolated): $f = 824.2$ MHz; $\sigma = 0.891$ S/m; $\epsilon_r = 40.239$; $\rho = 1000$ kg/m³

Phantom section: Flat Section

DASY5 Configuration:

- Probe: EX3DV4 - SN7601; ConvF(10.3, 10.3, 10.3) @ 824.2 MHz; Calibrated: 01.29.2024
- Sensor-Surface: 1.4mm (Mechanical Surface Detection)
- Electronics: DAE4 Sn1373; Calibrated: 11.27.2023
- Phantom: SAM-Twin; Type: QD 000 P40 CD; Serial: 1885
- Measurement SW: DASY52, Version 52.10 (4); SEMCAD X Version 14.6.14 (7501)

GPRS 850 3Slots Body Back/Low Channel/Area Scan (81x81x1): Interpolated grid: dx=1.500 mm, dy=1.500 mm

Maximum value of SAR (interpolated) = 1.38 W/kg

GPRS 850 3Slots Body Back/Low Channel/Zoom Scan (5x5x7)/Cube 0:

Measurement grid: dx=8mm, dy=8mm, dz=5mm

Reference Value = 40.32 V/m; Power Drift = 0.06 dB

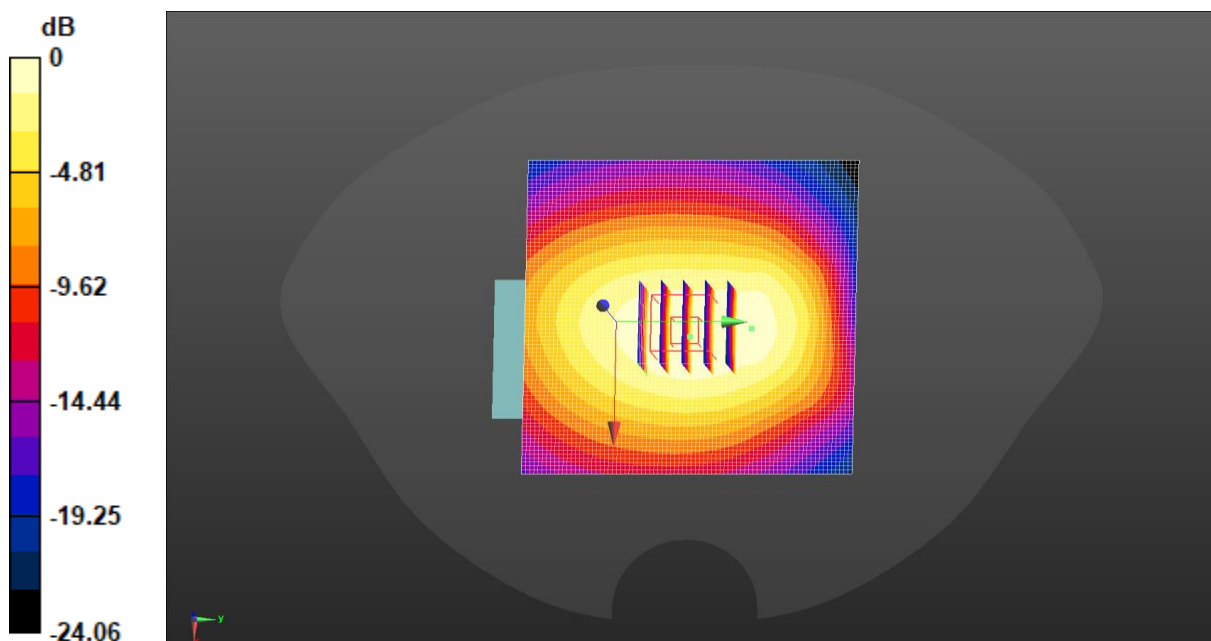
Peak SAR (extrapolated) = 1.59 W/kg

SAR(1 g) = 1.07 W/kg; SAR(10 g) = 0.739 W/kg

Smallest distance from peaks to all points 3 dB below: Larger than measurement grid (> 16 mm)

Ratio of SAR at M2 to SAR at M1 = 67.8%

Maximum value of SAR (measured) = 1.39 W/kg



$$0 \text{ dB} = 1.38 \text{ W/kg} = 1.40 \text{ dBW/kg}$$

Test Laboratory: JYTSZ

Date: 10.27.2024

DUT: 2G Feature Phone; Type: Shield; Serial: SZR012400516-3

Communication System: UID 0, GPRS(3 Slots) (0); Frequency: 1880 MHz; Duty Cycle: 1:2.77971

Medium parameters used: $f = 1880 \text{ MHz}$; $\sigma = 1.403 \text{ S/m}$; $\epsilon_r = 38.483$; $\rho = 1000 \text{ kg/m}^3$

Phantom section: Flat Section

DASY5 Configuration:

- Probe: EX3DV4 - SN7601; ConvF(8.44, 8.44, 8.44) @ 1880 MHz; Calibrated: 01.29.2024
- Sensor-Surface: 1.4mm (Mechanical Surface Detection)
- Electronics: DAE4 Sn1373; Calibrated: 11.27.2023
- Phantom: SAM-Twin; Type: QD 000 P40 CD; Serial: 1885
- Measurement SW: DASY52, Version 52.10 (4); SEMCAD X Version 14.6.14 (7501)

GPRS 1900 3Slots Body Back/Middle Channel/Area Scan (81x81x1):

Interpolated grid: $dx=1.500 \text{ mm}$, $dy=1.500 \text{ mm}$

Maximum value of SAR (interpolated) = 0.953 W/kg

GPRS 1900 3Slots Body Back/Middle Channel/Zoom Scan (5x5x7)/Cube 0:

Measurement grid: $dx=8\text{mm}$, $dy=8\text{mm}$, $dz=5\text{mm}$

Reference Value = 9.067 V/m ; Power Drift = -0.01 dB

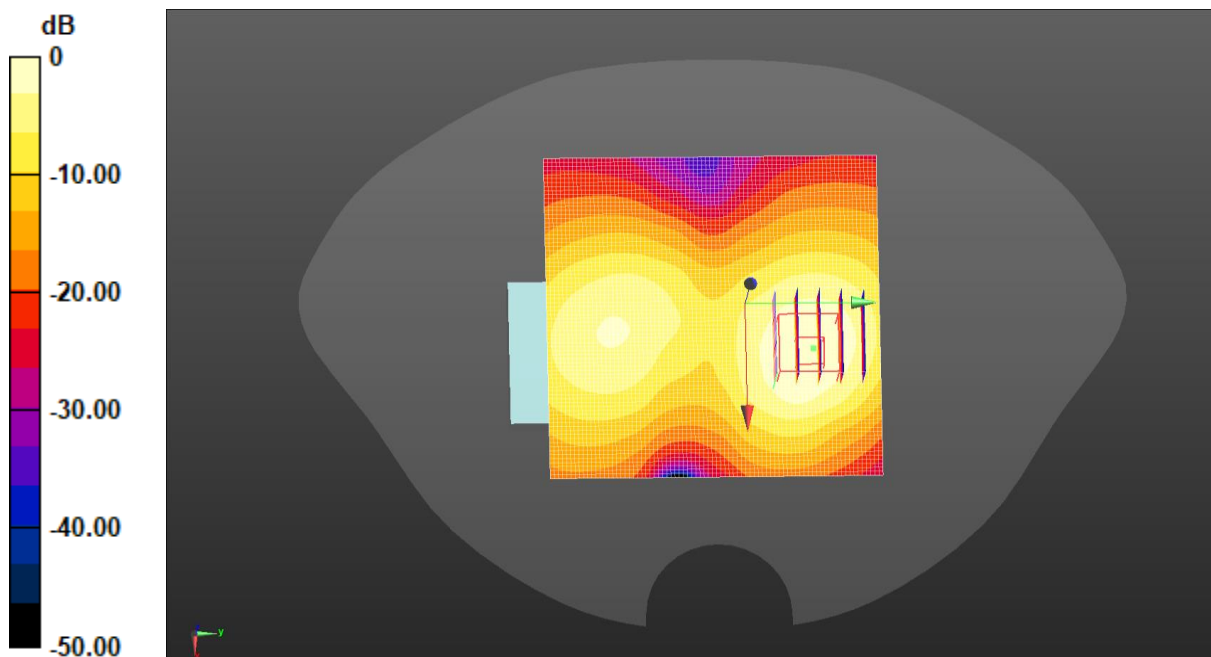
Peak SAR (extrapolated) = 1.13 W/kg

SAR(1 g) = 0.645 W/kg ; SAR(10 g) = 0.369 W/kg

Smallest distance from peaks to all points 3 dB below = 12.5 mm

Ratio of SAR at M2 to SAR at M1 = 56.1%

Maximum value of SAR (measured) = 0.906 W/kg



0 dB = 0.953 W/kg = -0.21 dBW/kg

Test Laboratory: JYTSZ

Date: 10.23.2024

DUT: 2G Feature Phone; Type: Shield; Serial: SZR012400516-3

Communication System: UID 0, GPRS(3 Slots) (0); Frequency: 824.2 MHz; Duty Cycle: 1:2.77971

Medium parameters used (interpolated): $f = 824.2$ MHz; $\sigma = 0.891$ S/m; $\epsilon_r = 40.239$; $\rho = 1000$ kg/m³

Phantom section: Flat Section

DASY5 Configuration:

- Probe: EX3DV4 - SN7601; ConvF(10.3, 10.3, 10.3) @ 824.2 MHz; Calibrated: 01.29.2024
- Sensor-Surface: 1.4mm (Mechanical Surface Detection)
- Electronics: DAE4 Sn1373; Calibrated: 11.27.2023
- Phantom: SAM-Twin; Type: QD 000 P40 CD; Serial: 1885
- Measurement SW: DASY52, Version 52.10 (4); SEMCAD X Version 14.6.14 (7501)

GPRS 850 3Slots Body Back/Low Channel/Area Scan (81x81x1): Interpolated grid: $dx=1.500$ mm, $dy=1.500$ mm

Maximum value of SAR (interpolated) = 6.98 W/kg

GPRS 850 3Slots Body Back/Low Channel/Zoom Scan (5x5x7)/Cube 0:

Measurement grid: $dx=8$ mm, $dy=8$ mm, $dz=5$ mm

Reference Value = 31.40 V/m; Power Drift = 0.03 dB

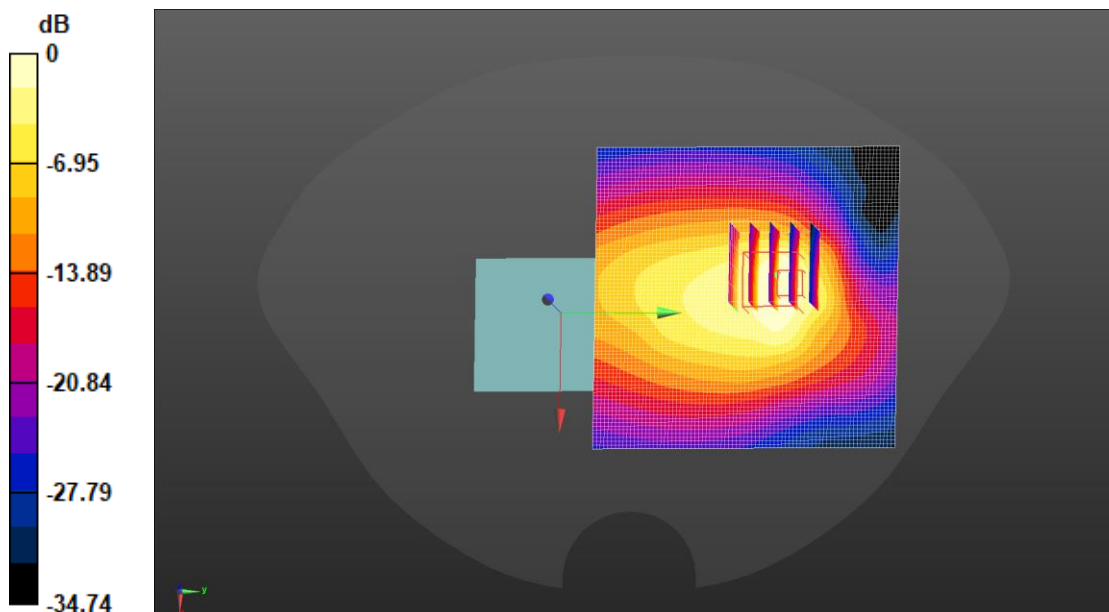
Peak SAR (extrapolated) = 15.9 W/kg

SAR(1 g) = 4.54 W/kg; SAR(10 g) = 2.21 W/kg

Smallest distance from peaks to all points 3 dB below = 5.8 mm

Ratio of SAR at M2 to SAR at M1 = 29.3%

Maximum value of SAR (measured) = 8.81 W/kg



0 dB = 6.98 W/kg = 8.44 dBW/kg

Test Laboratory: JYTSZ

Date: 10.23.2024

DUT: 2G Feature Phone; Type: Shield; Serial: SZR012400516-3

Communication System: UID 0, GPRS(3 Slots) (0); Frequency: 824.2 MHz; Duty Cycle: 1:2.77971

Medium parameters used (interpolated): $f = 824.2$ MHz; $\sigma = 0.891$ S/m; $\epsilon_r = 40.239$; $\rho = 1000$ kg/m³

Phantom section: Flat Section

DASY5 Configuration:

- Probe: EX3DV4 - SN7601; ConvF(10.3, 10.3, 10.3) @ 824.2 MHz; Calibrated: 01.29.2024
- Sensor-Surface: 1.4mm (Mechanical Surface Detection)
- Electronics: DAE4 Sn1373; Calibrated: 11.27.2023
- Phantom: SAM-Twin; Type: QD 000 P40 CD; Serial: 1885
- Measurement SW: DASY52, Version 52.10 (4); SEMCAD X Version 14.6.14 (7501)

GPRS 850 3Slots Body Back/Low Channel/Area Scan (81x81x1): Interpolated grid: $dx=1.500$ mm, $dy=1.500$ mm

Maximum value of SAR (interpolated) = 9.41 W/kg

GPRS 850 3Slots Body Back/Low Channel/Zoom Scan (5x5x7)/Cube 0:

Measurement grid: $dx=8$ mm, $dy=8$ mm, $dz=5$ mm

Reference Value = 27.72 V/m; Power Drift = 4.44 dB

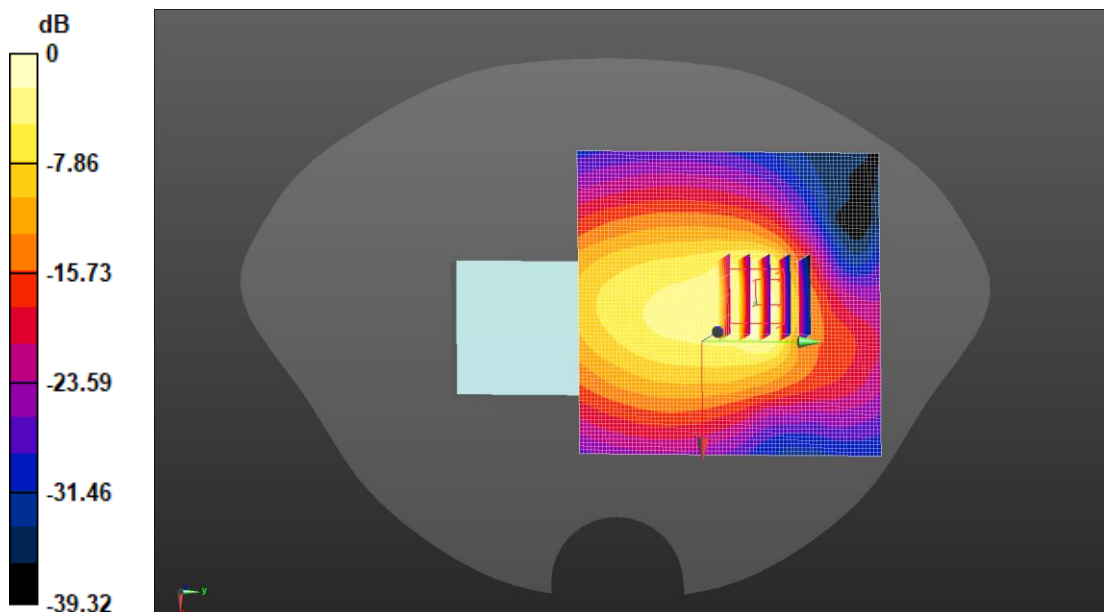
Peak SAR (extrapolated) = 16.9 W/kg

SAR(1 g) = 4.39 W/kg; SAR(10 g) = 2.24 W/kg

Smallest distance from peaks to all points 3 dB below = 4.5 mm

Ratio of SAR at M2 to SAR at M1 = 26.1%

Maximum value of SAR (measured) = 7.87 W/kg



0 dB = 9.41 W/kg = 9.74 dBW/kg

-----End of Report-----