

WARRANTY

Thank you for purchasing Realfit products.

If any manufacturing defect problems occur within 12 months from the date of purchase, you can enjoy our company's warranty service.

Matters Needing Attention:

1. When you buy the product, the sales unit will issue a valid proof of purchase.

2. The warranty card and the proof of purchase should be kept by the user properly, and it will not be replaced if lost.

3. If the product fails due to non-human factors, the user can present the warranty card and proof of purchase to the Realfit customer service center for free maintenance during the warranty period.

Non-warranty situation:

This warranty does not cover the following cases:

1. Out of warranty period.

2. Damage caused by user not in accordance with the instructions.

3. Damage caused by unauthorized disassembly, maintenance, or modification of the product.

4. Failure caused by force majeure factors (such as floods, earthquakes, lightning, etc.).

5. There is no warranty card, invoice, or warranty card that does not match the invoice information.

6. The product wears naturally.

7. Other failures and damages that are not caused by the quality of the product itself.

Website: www.dizo.net

WARRANTY CARD (Stub Copy)

Dear user, thank you for using the product of our company. Please read and keep properly the warranty card after purchasing the product so that we can provide better services to you.

WARRANTY CARD (Customer Copy)

Dear user, thank you for using the product of our company. Please read and keep properly the warranty card after purchasing the product so that we can provide better services to you.

User Information

Name

Phone Number

Address

Email

RECYCLING INITIATIVE

Thank you for choosing RealFit. Our responsibility is not limited to showing you our products. We have been working in the field of safe disposal of electronic waste.

For more details about our recycling program, please visit [www.dizo.net](#)

Call us: Toll Free No. - 1800 843 3030

CAUTION

– Risk of explosion if the battery is replaced by an incorrect type.

– disposal of a battery into fire or a hot oven, or mechanically crushing or cutting of a battery, that can result in an explosion.

– leaving a battery in an extremely high temperature surrounding environment that can result in an explosion or the leakage of flammable liquid or gas;

– a battery subjected to extremely low air pressure that may result in an explosion or the leakage of flammable liquid or gas.

RF Exposure Information and Statement

The SAR limit of FCC is 1.6W/Kg for head. The highest SAR value reported under this standard during product certification when used against the head is 0.162W/Kg.

This device complies with part 15 of the FCC rules. Operation is subject to the following two conditions:

(1) This device may not cause harmful interference, and

(2) this device must accept any interference received, including interference that may cause undesired operation.

**NOTE:** The manufacturer is not responsible for any radio or TV interference caused by unauthorized modifications to this equipment. Such modifications could void the user's authority to operate the equipment.

**NOTE:** This equipment has been tested and found to comply with the limits for a Class B digital device, pursuant to part 15 of the FCC Rules. These limits are designed to provide reasonable protection against harmful interference in a residential installation. This equipment generates uses and can radiate radio frequency energy and, if not installed and used in accordance with the instructions, may cause harmful interference to radio communications. However, there is no guarantee that interference will not occur in a particular installation. If this equipment does cause harmful interference to radio or television reception, which can be determined by turning the equipment off and on, the user is encouraged to try to correct the interference by one or more of the following measures:

– Reorient or relocate the receiving antenna.

– Increase the separation between the equipment and receiver.

– Connect the equipment into an outlet on a circuit different from that to which the receiver is connected.

– Consult the dealer or an experienced radio/TV technician for help.

- This device and its antenna(s) must not be co-located or operating in conjunction with any other antenna or transmitter.

RF Warning statement:

The device has been evaluated to meet general RF exposure requirement. The device can be used in portable exposure condition without restriction.

WARNING ⚠

1. Do not put this product in a liquid environment or expose it to high-humidity environment.

2. Do not squeeze the product to avoid damaging it.

3. Do not try to disassemble the product. If it needs to be stored for a long time, please put it in a cool and dry place to keep it dry.

4. Avoid contact with strong magnets to prevent the magnetic scrubed from being demagnetized.

5. Do not use the product in a dusty, humid and dirty environment, otherwise the electronic circuit of the device may be damaged.

6. Do not use this device during thunderstorm, as thunderstorm may cause device failure or electric shock.

7. Please use your device in the environment of 0°C to 45°C. Your device may be damaged in an extremely hot or cold environment.

8. For your safety, please do not use the product when riding a motorcycle or bicycle, driving or crossing the road.

9. Keep the device out of the reach of children or pets to avoid injury.

10. Please do not clean the product with any use chemicals, detergents or strong detergents.

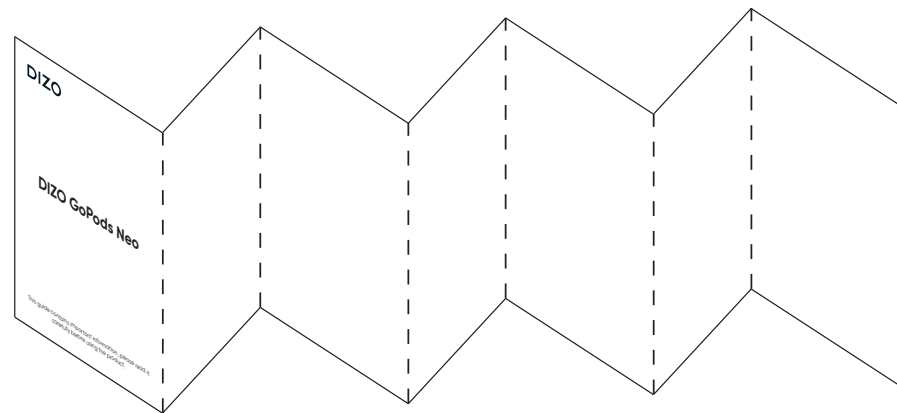
RealFit(SHENZHEN) INTELLIGENT TECHNOLOGY CO., LTD

Room 201, building A, No.1 Qianwan 1st Road, Shenzhen Hong Kong cooperation zone, Shenzhen, China

CE

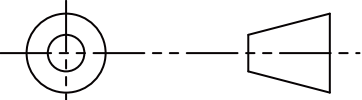
RoHS

## 说明书折法



### 技术要求:

- 1) 颜色C: 1C+1C;
- 2) 材质M: 80G哑粉纸;
- 3) 工艺F: 刀切+风琴折;
- 4) 环保: 产品环保认证需满足包装指令+HF+REACH要求;  
符合最新版《联创宏声有害物质管理标准》;  
同时须符合双方签订的《环保协议书》;
- 5) 测试要求: 无;
- 6) 其 他: (1) 颜色与样板(样板只能存放六个月) 不能存在严重色;  
差色彩误差在-3%~3%之间;;  
(2) 印刷字唛、图案不能存在模糊不清或有重影;  
(3) 贴纸切割位与样板不符, 有切偏或未切断等;  
(4) 折合後, 各折合邊位紙質不能有爆開、起皱;  
(5) 印刷内容及内容排版位置需与样板或文档相符.

|     |          |            |   |     |    |         |       |      |       |        |      |
|-----|----------|------------|---|-----|----|---------|-------|------|-------|--------|------|
|     |          |            | 产品型号  |     |    | 说明书-印度版 |       |      |       |        |      |
|     |          |            | 零件名称  |     |    |         |       |      |       |        |      |
|     |          |            | 零件编号  |     |    |         |       |      |       |        |      |
| 变 更 | 原 因      | 签名/日期      | 图纸编号  |     |    |         |       |      |       |        |      |
| 标 记 | 签 名 / 日期 |            |   |     |    |         |       |      |       |        |      |
| 制 图 | 何新华      | 2021/05/17 | 版本  | 比例  | 单位 | A       | ±0.05 | ±0.1 | ±0.2  | ±0.3   | ±0.4 |
| 标准化 |          | 2021/05/17 | V1  | 1:1 | MM | B       | ±0.1  | ±0.2 | ±0.3  | ±0.4   | ±0.5 |
| 审 核 |          | 2021/05/17 |  |     |    | C       | ±0.2  | ±0.5 | ±0.7  | ±1.2   | ±2.0 |
| 批 准 |          | 2021/05/17 |   |     |    | 等级      | <5    | 5~15 | 15~60 | 60~250 | >250 |