

3 Software Installation

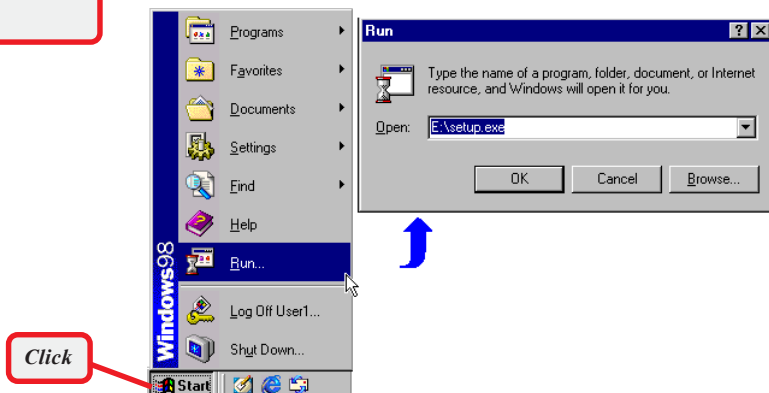
This section describes the procedures of installing the driver and utility. Follow the instruction step by step to finish the installation. If you use Windows® 98SE/ME, please prepare the Windows® Setup CD at hand before installing the driver; because the system will ask you to insert the Setup CD to copy files during the installation.

>>> 3.1 Installing on Windows® 98SE/ME

Step 1. Insert the driver CD into your CD-ROM drive, and the Setup program should launch automatically.

If the Autorun program doesn't launch, click **Start** at the taskbar and select **Run**; type **E:\setup.exe** in the Open box and click **OK**, where **E** is your CD-drive.

The card should be installed into your computer before installing the driver and utility.



Windows 98SE



The installation screen of Setup program

Click the **Install Software** button.

Then, the system will detect a new device and start to configure the new device. Click **Restart** when prompted.

After rebooting, the system will search the new device again, click **Cancel** to continue the installation from the InstallShield Wizard.

Step 2. The welcome screen of InstallShield Wizard appears. click **Next**.

Read and accept the License Agreement, then click **Next**.

Enter the user's information (*User Name, Organization*) in the respective fields, then click **Next**.

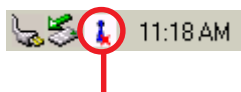
- Step 3.** Click **Install** and the program will copy the necessary files to the system. The progress indicator shows the installing status.

You may be asked to insert the Windows Setup CD during the installation. Please insert the Setup CD by the on-screen instruction to continue the installation.

- Step 4.** When the installation is completed, click **Finish**.

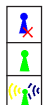
The system will restart. Click **Yes** when prompted to reboot the system.

After rebooting, the **MSI Wireless LAN** icon* appears in the status area.



MSI Wireless LAN icon

*** The MSI Wireless LAN icon**



Not connected to the network.

Connected to the network.

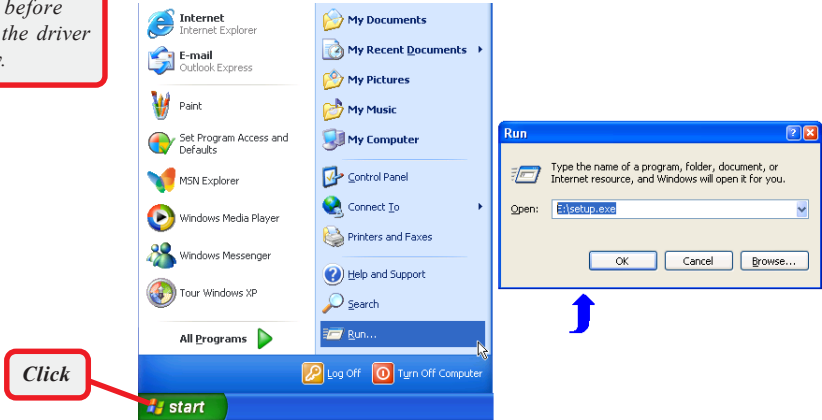
Receiving/transmitting data from/to the network.

>>> 3.2 Installing on Windows® 2000/XP

- Step 1.** Insert the driver CD into your CD-ROM drive, and the Setup program should launch automatically.

If the Autorun program doesn't launch, click **Start** at the taskbar and select **Run**; type **E:\setup.exe** in the Open box and click **OK**, where **E** is your CD-drive.

The card should be installed into your computer before installing the driver and utility.



Windows XP

Click the **Install Software** button.



The installation screen of Setup program

Step 2. The welcome screen of InstallShield Wizard appears. Click **Next**.

Read and accept the License Agreement, then click **Next**.

Step 3. Enter the user's information (*User Name, Organization*) in the respective fields, then click **Next**.

Click **Install** and the program will copy the necessary files to the system. The progress indicator shows the installing status.

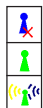
Step 4. When the installation is completed, click **Finish**.

The **MSI Wireless LAN** icon* appears in the status area.



MSI Wireless LAN icon

*** The MSI Wireless LAN icon**



Not connected to the network.

Connected to the network.

Receiving/transmitting data from/to the network.