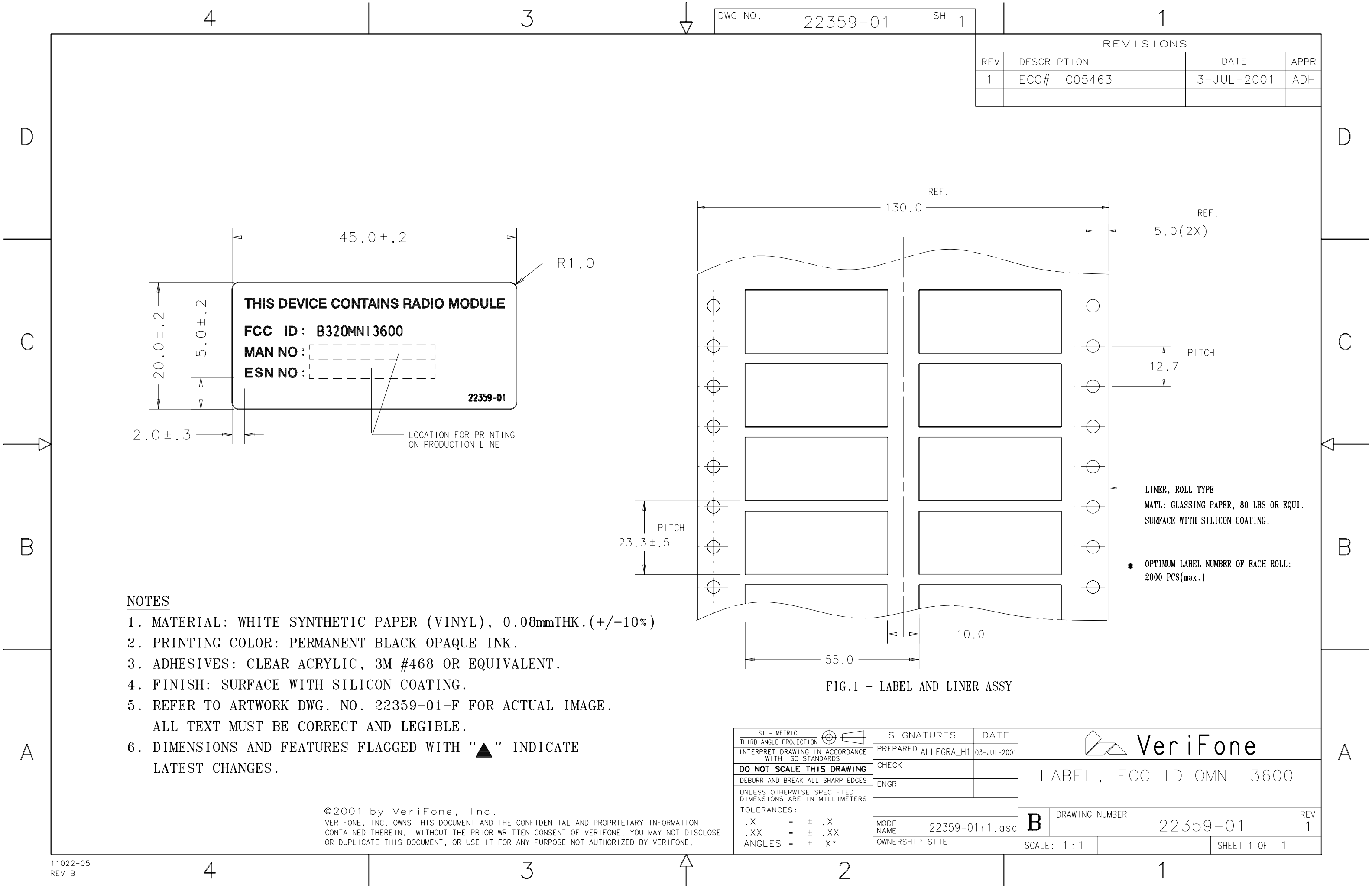


FCC ID: B32OMNI3600

Exhibit 4

FCC ID Label/Location



REVISIONS			
REV	DESCRIPTION	DATE	APPR
1	ECO# C05463	3-JUL-2001	ADH

NOTES

1. MATERIAL: WHITE SYNTHETIC PAPER (VINYL), 0.08mmTHK.(+/-10%)
2. PRINTING COLOR: PERMANENT BLACK OPAQUE INK.
3. ADHESIVES: CLEAR ACRYLIC, 3M #468 OR EQUIVALENT.
4. FINISH: SURFACE WITH SILICON COATING.
5. REFER TO ARTWORK DWG. NO. 22359-01-F FOR ACTUAL IMAGE.
ALL TEXT MUST BE CORRECT AND LEGIBLE.
6. DIMENSIONS AND FEATURES FLAGGED WITH "▲" INDICATE LATEST CHANGES.

©2001 by VeriFone, Inc.
VERIFONE, INC. OWNS THIS DOCUMENT AND THE CONFIDENTIAL AND PROPRIETARY INFORMATION CONTAINED THEREIN. WITHOUT THE PRIOR WRITTEN CONSENT OF VERIFONE, YOU MAY NOT DISCLOSE OR DUPLICATE THIS DOCUMENT, OR USE IT FOR ANY PURPOSE NOT AUTHORIZED BY VERIFONE.

FIG.1 - LABEL AND LINER ASSY

SI - METRIC
THIRD ANGLE PROJECTION
INTERPRET DRAWING IN ACCORDANCE WITH ISO STANDARDS
DO NOT SCALE THIS DRAWING
DEBURR AND BREAK ALL SHARP EDGES
UNLESS OTHERWISE SPECIFIED, DIMENSIONS ARE IN MILLIMETERS
TOLERANCES:
.X = ± .X
.XX = ± .XX
ANGLES = ± X°

SIGNATURES

DATE

PREPARED ALLEGRA_H1

03-JUL-2001

CHECK

ENGR

MODEL NAME 22359-01r1.asc

OWNERSHIP SITE

VeriFone

LABEL, FCC ID OMNI 3600

B

DRAWING NUMBER 22359-01

REV 1

SCALE: 1:1

SHEET 1 OF 1

P 14

- (1) TORQUE SETTING: 62.5 ± 7 in/oz
 (2) FASTEN IN ORDER 1~4 AS SHOWN

