

# User Guide

CL4790

*Version 4.0*

---

## FCC INTERFERENCE STATEMENT

This equipment has been tested and found to comply with the limits for a Class B digital device, pursuant to Part 15 of the FCC Rules. These limits are designed to provide reasonable protection against harmful interference in a residential installation. This equipment generates, uses and can radiate radio frequency energy and, if not installed and used in accordance with the instructions, may cause harmful interference to radio communications. However, there is no guarantee that interference will not occur in a particular installation. If this equipment does cause harmful interference to radio or television reception, which can be determined by turning the equipment off and on, the user is encouraged to try to correct the interference by one of the following measures:

- Reorient or relocate the receiving antenna.
- Increase the separation between the equipment and receiver.
- Connect the equipment into an outlet on a circuit different from that to which the receiver is connected.
- Consult the dealer or an experienced radio/TV technician for help.

FCC Caution: Any changes or modifications not expressly approved by the party responsible for compliance could void the user's authority to operate this equipment.

This device complies with Part 15 of the FCC Rules. Operation is subject to the following two conditions: (1) This device may not cause harmful interference, and (2) this device must accept any interference received, including interference that may cause undesired operation.

### **IMPORTANT NOTE:**

#### **Radiation Exposure Statement:**

This equipment complies with FCC radiation exposure limits set forth for an uncontrolled environment. This equipment should be installed and operated with minimum distance 20cm between the radiator & your body.

This transmitter must not be co-located or operating in conjunction with any other antenna or transmitter.

## INDUSTRY CANADA STATEMENT

*This device contains licence-exempt transmitter(s)/receiver(s) that comply with Innovation, Science and Economic Development Canada's licence-exempt RSS(s). Operation is subject to the following two conditions:*

- (1) This device may not cause interference*
- (2) This device must accept any interference, including interference that may cause undesired operation of the device*

*L'émetteur/récepteur exempt de licence contenu dans le présent appareil est conforme aux CNR d'Innovation, Sciences et Développement économique Canada applicables aux appareils radio exempts de licence. L'exploitation est autorisée aux deux conditions suivantes :*

- (1) L'appareil ne doit pas produire de brouillage;*
- (2) L'appareil doit accepter tout brouillage radioélectrique subi, même si le brouillage est susceptible d'en compromettre le fonctionnement.*

### Radiation Exposure Statement:

This equipment complies with Canada radiation exposure limits set forth for an uncontrolled environment. This equipment should be installed and operated with minimum distance 20cm between the radiator & your body.

### Déclaration d'exposition aux radiations:

Cet équipement est conforme Canada limites d'exposition aux radiations dans un environnement non contrôlé. Cet équipement doit être installé et utilisé à distance minimum de 20cm entre le radiateur et votre corps.

*This radio transmitter [IC: 3147A-CL4490] has been approved by Innovation, Science and Economic Development Canada to operate with the antenna types listed below, with the maximum permissible gain indicated. Antenna types not included in this list that have a gain greater than the maximum gain indicated for any type listed are strictly prohibited for use with this device.*

*Le présent émetteur radio [IC: 3147A-CL4490] a été approuvé par Innovation, Sciences et Développement économique Canada pour fonctionner avec les types d'antenne énumérés ci-dessous et ayant un gain admissible maximal. Les types d'antenne non inclus dans cette liste, et dont le gain est supérieur au gain maximal indiqué pour tout type figurant sur la liste, sont strictement interdits pour l'exploitation de l'émetteur.*

*This radio transmitter [IC: 3147A-CL4490] has been approved by Innovation, Science and Economic Development Canada to operate with the antenna types listed below, with the maximum permissible gain indicated. Antenna types not included in this list that have a gain greater than the maximum gain indicated for any type listed are strictly prohibited for use with this device.*

*Le présent émetteur radio [IC: 3147A-CL4490] a été approuvé par Innovation, Sciences et Développement économique Canada pour fonctionner avec les types d'antenne énumérés ci-dessous et ayant un gain admissible maximal. Les types d'antenne non inclus dans cette liste, et dont le gain est supérieur au gain maximal indiqué pour tout type figurant sur la liste, sont strictement interdits pour l'exploitation de l'émetteur.*

Ezurio Part Number	Manufacturer Part Number	Manufacturer	Type	Gain (dBi)	Frequency Band (MHz)
0600-00024	S467AH-915S	Nearson	1/2 Wave Dipole	2.0	902-928
0600-00030	S331AH-915	Nearson	1/4 Wave Dipole	2.0	902-928

## Revision History

Version	Date	Notes	Contributors	Approver
1.0		Initial Release		Chris Downey
1.1		Changes and Revisions		Chris Downey
2.0	02 Aug 2013	Major changes and revisions; updated format and data		Chris Downey
3.0	18 Dec 2013	Separated Hardware Integration Guide (HIG) from User Guide information (created two separate documents).		Sue White
3.1	21 Oct 2022	Updated to latest template. Added revised FCC Notice / RF Exposure statement	Dave Drogowski Raj Khatri	Jonathan Kaye
4.0	29 Mar 2024	Converted to Ezurio template. Added revised FCC, ISED Notice / RF Exposure statement	Dave Drogowski Raj Khatri	Dave Drogowski

## Contents

CL4790 RF Transceiver .....	6
Overview .....	6
Features.....	6
Theory of Operation.....	7
RF Architecture .....	7
Network Topologies .....	7
Modes of Operation .....	7
Transmit Mode.....	7
Receive Mode .....	7
Command Mode .....	8
Security.....	11
Spread Spectrum History .....	11
How Spread Spectrum Works .....	11
Frequency Hopping Spread Spectrum .....	11
CL4790 Security Features .....	11
Programming the CL4790 .....	12
Related Documents and Files.....	12
Appendix I: Troubleshooting.....	14
Force 9600 Baud Recovery .....	14
Additional Information.....	16

# 1 CL4790 RF Transceiver

The CL4790 transceiver is a Frequency Hopping Spread Spectrum (FHSS) radio designed for license-free operation in the 900 MHz Industrial, Scientific, and Medical (ISM) unlicensed band. The radio sustains a standard asynchronous serial data stream between two or more radios. Housed in a compact and rugged die-cast enclosure, the radio is equipped to replace miles of serial cable with its wireless link. The radio features an RS232 or RS485 interface for integration into legacy data systems.

## 1.1 Overview

The CL4790 uses Frequency Hopping Spread Spectrum technology, where the units “hop” from frequency to frequency many times per second using a specific hop pattern applied to all the transceivers in the same network. A distinct hopping pattern is provided for each Channel Number, thereby allowing multiple networks to co-exist in the same area with limited interference.

CL4790 transceivers operate in a Masterless architecture. When a CL4790 has data to transmit, it will enter transmit mode and start transmitting a sync pulse intended for an individual radio or broadcast to all transceivers within the same network and range. Intended receivers synchronize to this sync pulse, a session begins and data is transmitted. This instinctive dynamic peer-to-peer networking architecture enables several transceiver pairs to carry on simultaneous conversations on the same network.

CL4790s implement a proprietary communication protocol to provide secure data transmissions. Using FHSS technology ensures data reliability over long distances.

The CL4790 transceivers use the 900 MHz ISM license free frequency band, which requires no additional certifications when designing into a new or legacy data system.

Each unit is small and easily portable for use in mobile and temporary settings as well as fixed installations. The CL4790 configuration software enables custom configurations based on unique application requirements.

This document contains information about the hardware and software interface between an Ezurio CL4790 transceiver and an OEM host. Information includes the theory of operation, specifications, serial interface definition, security information and mechanical drawings. The OEM is responsible for ensuring the final product meets all appropriate regulatory agency requirements listed herein before selling any product.

---

**Note:** CL4790 modules are referred to as the “radio” or “transceiver”. Individual naming differentiates product -specific features. The host (PC, Microcontroller or any connected device) is “OEM host.”

---

## 1.2 Features

- Masterless: True peer-to-peer; each module can communicate with any other module within its range and network
- API commands to control packet routing and acknowledgement on a packet-by-packet basis
- Durable industrial grade enclosure
- Transparent operation; supports any legacy system
- Transmits around corners, through walls
- Reliable communication with serial UART speeds up to 115.2 Kbps
- Point-to-Point and Point-to-Multipoint setups

## 2 Theory of Operation

### 2.1 RF Architecture

As opposed to a Server/Client protocol, a Masterless protocol does not require devices to be within range of a central synchronizing device (Server) to communicate. The communicating devices only need to be within range of each other. Communication between devices that are out of range of each other is also possible using repeaters or Host systems that can direct the data through a Daisy Chain type topology.

### 2.2 Network Topologies

Topology refers to the shape of a network, or the network's layout. The way different nodes in a network connect to each other and how they communicate is determined by the network's topology. The CL4790s have a Masterless communication protocol, referred to as Peer-to-Peer, which can be used to implement both Point-to-Point and Point-to-Multipoint topologies. *See the AC4790 Embedded Module User Manual for more detailed information about setting up different topologies using the advanced API features in the 4790 family of radios.*

### 2.3 Modes of Operation

The CL4790 has three different operating modes:

- Transmit Mode
- Receive Mode
- Command Mode

If the transceiver is not communicating with another radio, it is in Receive mode actively listening for a sync pulse from another transceiver. If the transceiver determines that it hears a sync pulse that is addressed to itself or broadcast on its network, it responds by going into session with the radio that sent the pulse. The LINK LED on the CL4790 illuminates to show that it is In Session. A transceiver enters Transmit or Command mode when the OEM host sends data over the serial interface. The contents of the data on the serial interface determine which of two modes the radio enters.

#### 2.3.1 Transmit Mode

All packets sent over the RF are either Addressed or Broadcast packets. You may dynamically control Broadcast and Addressed delivery with the API Control byte, which can be modified during operation with On-the-Fly commands (for more information on APIs and on-the-fly commands, see the AC4790 Embedded Module User Manual. To prohibit transceivers from receiving broadcast packets, Unicast only can be enabled.

When a radio has data to transmit, it sends out a sync pulse to initiate a session with one or more radios. This 25 ms sync pulse is sent during the first half of each 50 ms hop and transparent to the OEM Host. Once a Session has been established, the radio transmits the data during the remaining 25 ms of the current hop. The radio will stay in transmit mode until its Session Count expires. When sending addressed packets, Session Count is defined as Session Count Refresh (EEPROM address 0xC4) + number of transmit retries (EEPROM address 0x4C). When sending broadcast packets, Session Count is equal to Session Count Refresh (EEPROM address 0xC4) + number of broadcast attempts (EEPROM address 0x4D). Once the radio exits the Session it returns to the default Receive Mode.

<b>Addressed Packets</b>	When sending an addressed packet, the RF packet sends only to the receiver specified in the Destination Address. To increase the odds of successful delivery, Transmit Retries are utilized. Transparent to the OEM host, the sending radio sends the RF packet to the intended receiver. If the receiver receives the packet free of errors, it returns an RF acknowledge within the same 50 ms hop. If a receive acknowledgement is not received, the radio uses a transmit retry to resend the packet. The radio continues sending the packets until either (1) it receives an acknowledgement, or (2) it has used all transmit retries. The received packet only sends to the OEM host if and when it is received free of errors. <b>Note: If Transmit Retries is set to 1 the radio will only attempt to send the data one time with no retries, the minimum setting for Transmit Retries is 1 and cannot be set to 0.</b>
<b>Broadcast Packets</b>	When sending a broadcast packet, the RF packet sends out to every eligible transceiver on the network. To increase the odds of successful delivery, Broadcast Attempts are utilized. Transparent to the OEM host, the sending radio sends the RF packet to the intended receiver(s).  Unlike Transmit Retries, all Broadcast Attempts are used regardless of when the RF packet is actually received and without RF acknowledgements. If the packet is received on the first attempt, the receiver ignores the remaining broadcast attempts. The received packet is only sent to the OEM host if and when it is received free of errors. <b>Note: Like Transmit Retries, if Broadcast Attempts is set to 1 the transceiver will send the data one time with no additional attempts.</b>

#### 2.3.2 Receive Mode

If a transceiver detects a sync pulse, addressed to itself or broadcast on its network, while in Receive Mode, it will join the Session and begin receiving data. While in Receive Mode, subsequent data of up to 128 bytes can be received every hop (50 ms). When a transceiver is in Session, its Session Count is decremented by one every hop. When the Session Count reaches zero, the transceiver exits the Session. In order to continue receiving data, the transceivers update their Session Count every time data or an RF acknowledge is received. The SLock0 and SLock1 settings control Session Count as shown below.

**Table 1: Session Count Truth Table**

Case	Slock0	Slock1	Transceiver Receiving an Addressed Packet	Transceiver Receiving a Broadcast Packet
1	0	0	Radio loads its Current Session Count with its Session Count Refresh	Radio loads its Current Session Count with its Session Count Refresh
2	0	1	Radio loads its Current Session Count with (its Transmit Retries + its Session Count Refresh)	Radio loads its Current Session Count with (its broadcast attempts + its Session Count Refresh)
3*	1	0	Radio loads its Current Session Count with the remote radio's Session Count Refresh	Radio loads its Current Session Count with the remote radio's Session Count Refresh
4	1	1	Radio loads its Current Session Count with the remote radio's Current Session Count	Radio loads its Current Session Count with the remote radio's Current Session Count

\* EEPROM Default. This may not be the best setting for all applications. If having issues use Case 4.

**Note 1:** For Broadcast/Addressed packets, the Session Count for Full Duplex is 2x the value of Session Count in Half Duplex.

**Note 2:** It is best to have all transceivers with the same Session Count Refresh (EEPROM Address 0xC4) value. Session Count Refresh must not be set to 0x00.

#### 2.3.2.1 Case 1

In this case, a radio loads its Session Count with its Session Count Refresh. This is suitable for Half Duplex communication where immediate response is not expected from the remote radio. **Note: The term “immediate response” refers to the application layer and not the RF acknowledgment.**

#### 2.3.2.2 Case 2

In this case, a radio loads its Session Count with (its Session Count Refresh + its Transmit Retries). This case is suitable for applications where there are high levels of interference and it is likely that transmit retries will be necessary to maintain reliable communications.

When an addressed packet or a response to a broadcast packet is sent, the sending radio will listen for a successful acknowledgement. If an acknowledgement is not sent, the radio will resend the packet until either an acknowledgement is received or it has exhausted all available transmit retries. If two radios are on the last hop of the current session and a retry is required, it is possible that once the current session has ended the receiving radio could go into session with a different radio and miss the final packet of the previous session. Adding the radios Transmit retries to its Current Session Count will ensure that the radio does not exit the session when the remote radio is using a Transmit Retry.

#### 2.3.2.3 Case 3

In this case a radio loads its Session Count with the remote radio's Session Count Refresh. This is suitable for full duplex applications as the Session is extended as long as there is communication.

**Note:** This is the default case with which the radio ships and may not work well for all applications. Use Case 4 when a large number of data packets are lost during operation.

#### 2.3.2.4 Case 4

In this case, a radio loads its Session Count with the remote radio's current Session Count. This is suitable for daisy chain applications and large networks in which radios cannot stay in session longer than needed. This case guarantees that two radios will stay in session as long as they have data to communicate and will both leave the session at the same time.

### 2.3.3 Command Mode

A radio enters Command mode when data is received over the serial interface from the OEM host and contains the “AT+++” (Enter AT Command mode) command. Once in Command mode, all data received by the radio is interpreted as command data. Command Data may exist as either EEPROM Configuration or On-The-Fly commands. For more information on EEPROM Configuration and On-the-Fly commands, download the [AC4790 Embedded Module User Manual](#).



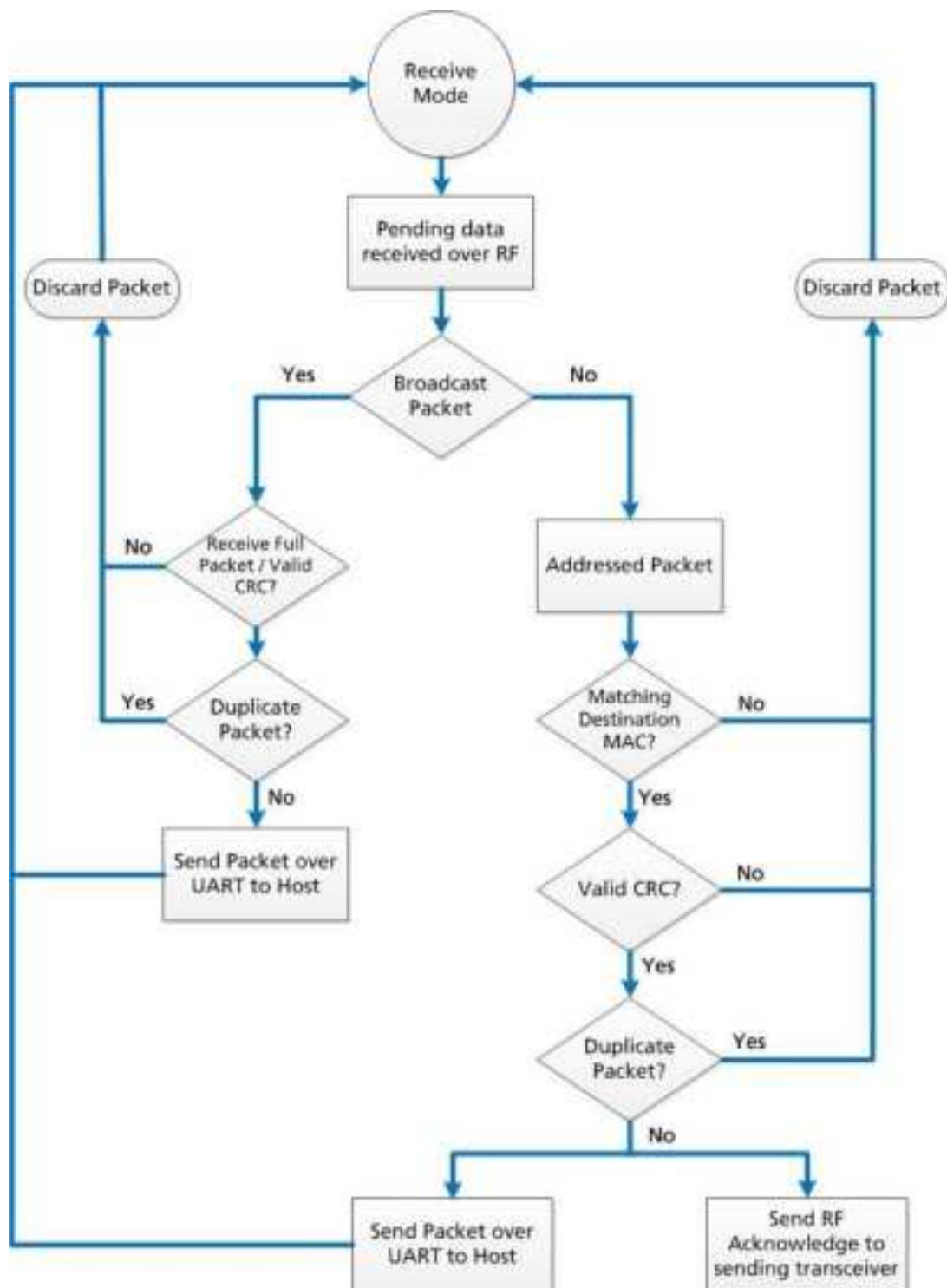


Figure 1: Pending RF data in buffer flow

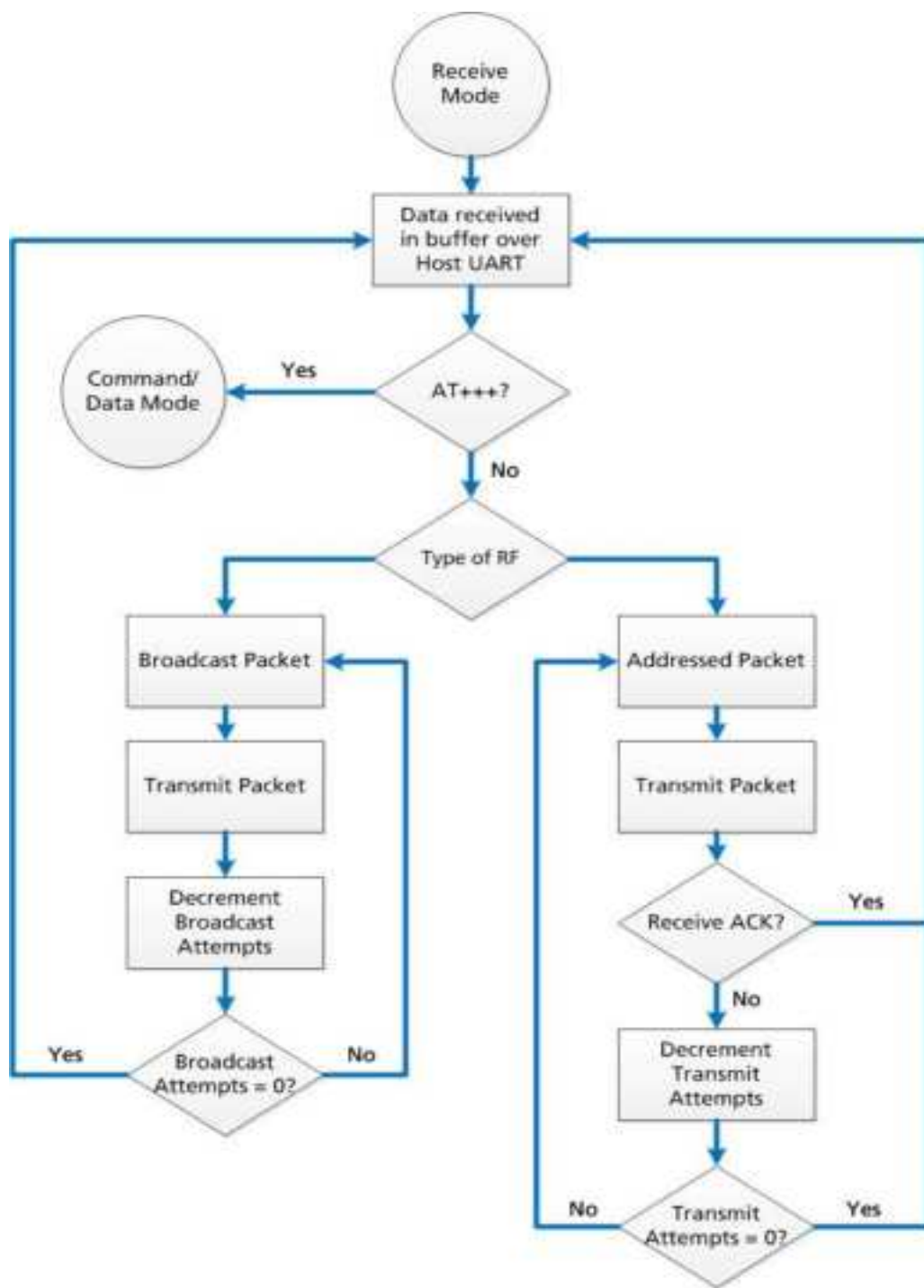


Figure 2: Pending RF data in buffer flow

## 2.4 Security

The 4790 product family utilizes a Frequency Hopping Spread Spectrum (FHSS) technology, which provides the foundation for secure digital wireless communications. The purpose of this section is to take a brief look at how spread spectrum technology works and explain how an OEM enables specific security features available in the CL4790.

### 2.4.1 Spread Spectrum History

Spread Spectrum, or SS, dates back to World War II, when actress Hedy Lamarr and composer George Antheil were granted a U.S. patent on a simple frequency hopping continuous wave (CW) system. These early research and development efforts tried to provide countermeasures for radar, navigation beacons, and communications.

### 2.4.2 How Spread Spectrum Works

SS radio communication has long been a favourite technology of the military because it resists jamming and is hard for an enemy to intercept. And now, this very same technology is widely used in the commercial, industrial and even consumer markets. The reason: SS signals distribute over a wide range of frequencies and then collect onto their original frequency at the receiver, making them so inconspicuous they are almost transparent. Just as they difficult to intercept by a military opponent, so are they unlikely to interfere with other signals intended for business and consumer users – even ones transmitted on the same frequencies.

Spread signals are intentionally made to have a much wider band than the information they are carrying and use special pseudo noise codes to make them more noise-like. It is this very characteristic that makes SS signals difficult to detect, intercept, and demodulate. SS signals are hard to detect on narrowband equipment because the signal's energy spreads over a much wider bandwidth. Further, SS signals are harder to jam (interfere with) than narrowband signals and have a much lower probability of being intercepted, which is why the military has used SS for so many years.

The spread of energy over a wide band makes SS signals less likely to interfere with narrowband communications. Narrowband communications, conversely, cause little to no interference to SS systems because the receiver effectively integrates the signal over a wide bandwidth to recover it.

Besides being hard to intercept and jam, spread spectrum signals are also difficult to exploit or imitate. Signal exploitation is the ability of a non-network member to listen to a network and use information from the network without being a valid network member or participant. Imitation is the act of falsely or maliciously introducing false traffic or messages into a network. SS signals also are naturally more secure than narrowband radio communications. Thus SS signals can have any degree of message privacy that is desired. Messages can also be encrypted to any level of secrecy desired. The very nature of SS allows military or intelligence levels of privacy and security with minimal complexity. While these characteristics may not be very important to everyday business or consumer needs, these features are important to understand.

### 2.4.3 Frequency Hopping Spread Spectrum

An FHSS radio does just what its name implies – that is, it “hops” from frequency to frequency over a wide band. The specific order in which it occupies frequencies is a function of a code sequence, and the rate of hopping from one frequency to another is a function of the information rate.

### 2.4.4 CL4790 Security Features

In addition to FHSS technology, Ezurio has implemented three levels of security in the CL4790. All three levels associate with their own EEPROM parameter that you may program for permanent operation or change during system operation in volatile memory using On-the-Fly commands (download the [AC4790 Embedded Module User Manual](#)). The first two levels of security configure and establish a network of transceivers and are defined as the RF Channel Number and System ID.

The RF Channel Number represents a specific hopping sequence and provides physical separation between collocated networks. Thus, all transceivers in a network must use the same RF Channel Number. There are a total of 56 Channel Numbers.

---

**Note:** RF Channels 16-47 are restricted to US/Canada, RF Channels 48-55 restrict operation to 915-928 MHz and are normally only used in Australia.

---

System ID is similar to a password character or network number and makes network eavesdropping more difficult. A receiving radio will not go in session (communicate) with another radio on a different System ID. There are a total of 256 System ID values.

In FHSS technology, RF Channel Number and System ID are still not enough to secure your data. The CL4790 supports the Data Encryption Standard (DES), which is the third level of security. Encryption is the process of encoding an information bit stream to secure the data content. The algorithm described in this standard specifies both encrypting and decrypting operations which are based on a binary number called a key.

A key of 56 bits encrypts and decrypts the data. The encryption algorithm specified in this standard is commonly known among those using the standard. The unique key chosen for particular application makes the results of encrypting data using the algorithm unique. Selection of a different key causes the encrypted data that is produced for any given set of inputs to differ. The cryptographic security of the data depends on the security provided for the key which encrypts and decrypts the data.

Recover data from the encryption by using exactly the same key which encrypts it. Unauthorized recipients of the encrypted data who know the algorithm but do not have the correct key cannot derive the original data algorithmically. However, anyone who does have the key and algorithm can easily decrypt the encrypted data and obtain the original data. A standard algorithm based on a secure key thus provides a basis for exchanging encrypted data by issuing the encryption key to those authorized to have the data.

## 3 Programming the CL4790

Ezurio provides the easy-to-use CL4790 **Configuration Utility** software for programming the CL4790. The GUI based software does not require any hardware configuration and works by itself. The software is compatible with Microsoft® Windows. CL4790s are plug-and-play devices that work with minimal or no configuration.

This section provides instructions for quick and simple setup of CL4790 networks. The Configuration Utility User Manual provides a full description of the software tool's functionality and features.

CL4790 customers who need advanced features and functionality like Transmit/Receive API can unlock these and other features in the Configuration Utility software using the **Enabling the Security Pane** application note. The Info Center located on the Configure tab of the Configuration Utility provides a quick explanation of all CL4790 features. Detailed descriptions for all available 4790 features are found in the **AC4790 Embedded Module User Manual**.

To program the CL4790, follow these steps:

1. Start the Configuration Utility. [Click here to download](#).
2. Connect a CL4790 unit to the serial port on the PC (refer to the Serial Interface section of the [CL4790 Datasheet](#)).
3. Attach the antenna to the CL4790 unit; make sure the connection is secure.
4. Connect the power supply to the CL4790 unit. Make sure the Pwr LED is on.
5. In the PC Settings tab in the Configuration Utility, select **Connex4790** from the Product drop-down.
6. Click Find Port.
7. From the Port drop-down menu, select the COM port that is connected to the CL4790.
8. Select the **Baud Rate** from the drop-down menu.

---

**Note:** All CL4790 units ship with a default baud rate of 57600 (unless units have been pre-configured to match specific serial settings). If the Interface Baud Rate of the CL4790 unit is changed, the PC Setting baud rate must match the device baud rate to allow proper programming of the units.

---

9. Click **Open Port** and verify that the Port (1/2) status bar at the bottom of the window shows the correct COM number, is OPEN, and CTS is Low.

---

**Note:** If connecting a CL4790-RS485 unit, set Port (1/2) Handshaking to NONE and disregard the status of CTS. Refer to the Serial Interface section of the [CL4790 Datasheet](#) for more information.

---

10. Go to the Configure tab and click **Read Radio**.
11. Change settings based on the type of network needed.

---

**Note:** The Configuration Utility automatically programs the mode (point-to-point or point-to-multipoint) based on the radio's current settings.

- If the Destination Address field is set to any value other than `FF FF FF FF FF FF`, the radio sends data only to the radio whose MAC matches that specified in the Destination Address field (point-to-point).

- If the Destination Address field is set to `FF FF FF FF FF FF`, it is set to Broadcast mode and transmits to all transceivers in range with the same System ID and RF Channel (point-to-multipoint).

For more information on settings, see the Info Center in the [Configuration Utility](#) or the [AC4790 Embedded Module User Manual](#).

---



---

**Note:** The *Show Defaults* button can display sample Radio Settings. These settings may not reflect the current default settings of the radio.

---

12. After all changes are made, click **Write Radio** to save the changes.

## 4 Related Documents and Files

The following additional documents are also available from the [CL4790 product page](#):

- Product Brief
- CL4790 Datasheet

The following downloads are also available from the RAMP ISM modules product page:

<https://www.ezurio.com/>

- Configuration Utility
- USB Drivers

## 5 Appendix I: Troubleshooting

Problem	Solution
Read Radio displays error message: "Radio not responding."	<p>Make sure the PC Settings are right.</p> <p>Make sure the CL4790 unit uses the right serial cable.</p> <p>If any other program using the same COM port as CL4790 is open, close that program and try to read the radio again.</p> <p>Reset the radio by cycling power after each unsuccessful read.</p>
Write Radio displays error: "Radio not responding."	Cycle power to the radio. Read the radio, make changes and click <b>Write Radio</b> .
Garbled Data received.	Check Data Encryption Standard settings.
Client's Link LED does not come on.	Make sure the unit is connected to power. Cycle power to the radio.
Link LED is on, but data does not get transmitted or received.	<p>Make sure the CL4790 unit or units connect to the correct COM port.</p> <p>Check the COM port settings for correct baud rate, parity, and either Hardware or No Flow Control. May be caused by Flow Control set to Xon/Xoff.</p> <p>Try increasing the Maximum Transmit Attempts (clients) and/or Broadcast Attempts (servers) in small increments until communication is established.</p> <p>Connect a Null Modem adapter between the client and its host device.</p> <p>Check the Destination Address setting.</p>

For further support, visit us at <http://www.ezurio.com/contact>

### 5.1 Force 9600 Baud Recovery

To force the serial interface to a known value, perform the following steps (this also sets the RF Packet Size and Interface Timeout to default values):

1. Remove power from the radio.
2. Remove the screws on the case and slide the radio out.
3. Set a jumper (a wire or even a pair of tweezers work because it is a low voltage line) between the pins indicated in [Figure 3](#).

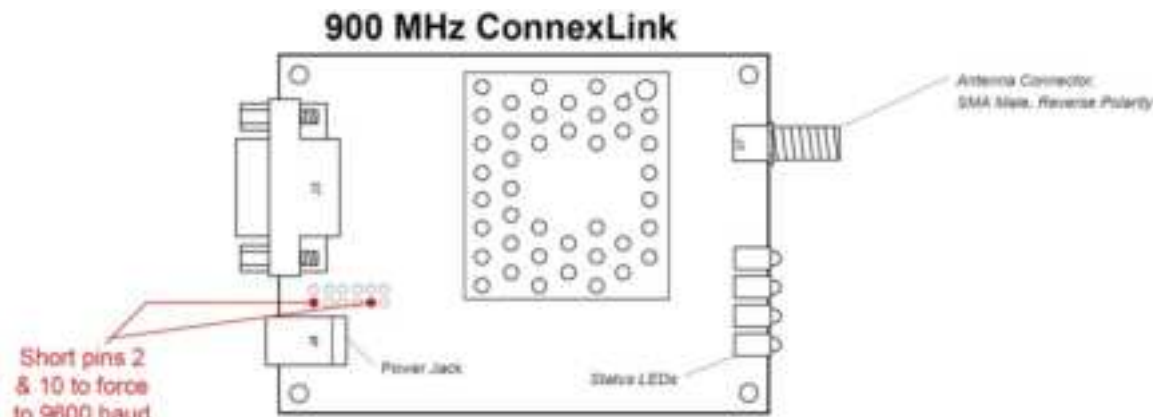


Figure 3: CL4790 with jumper pins highlighted

4. Connect the radio to the PC via a straight through cable.
5. Power on the radio.
6. On the PC Settings tab, click **Find Ports**.
7. Select the appropriate port from the drop-down list.
8. Set the rest of the settings to:
  - Baud Rate: 9600
  - Parity: None
  - Handshaking: Hardware
  - Data Bits: 8

- Stop Bits: 1
- 9. Under Options, ensure the *Read/Write with AT Commands* check box is selected.
- 10. Ensure the *Port Status* is open.
- 11. On the Configure tab, click **Read Radio**.
- 12. Set the *Interface Baud Rate* to the appropriate value and click **Write Radio**.
- 13. Power off the radio.
- 14. Remove the jumper.
- 15. Power on the radio.
- 16. Set the *Baud Rate* on the PC Settings tab to the baud rate you configured on the radio.
- 17. On the Configure tab, click **Read Radio**.

## 6 Additional Information

Please contact your local sales representative or our support team for further assistance:

<b>Headquarters</b>	Ezurio 50 S. Main St. Suite 1100 Akron, OH 44308 USA
<b>Phone</b>	Americas: +1-800-492-2320 Europe: +44-1628-858-940 Hong Kong: +852-2762-4823
<b>Website</b>	<a href="http://www.ezurio.com">http://www.ezurio.com</a>
<b>Technical Support</b>	<a href="http://www.ezurio.com/resources/support">http://www.ezurio.com/resources/support</a>
<b>Sales Contact</b>	<a href="http://www.ezurio.com/contact">http://www.ezurio.com/contact</a>

**Note:** Information contained in this document is subject to change.

Ezurio's products are subject to standard [Terms & Conditions](#).

<http://www.ezurio.com>

© Copyright 2024 Ezurio All Rights Reserved. Any information furnished by Ezurio and its agents is believed to be accurate but cannot be guaranteed. All specifications are subject to change without notice. Responsibility for the use and application of Ezurio materials or products rests with the end user since Ezurio and its agents cannot be aware of all potential uses. Ezurio makes no warranties as to non-infringement nor as to the fitness, merchantability, or sustainability of any Ezurio materials or products for any specific or general uses. Ezurio or any of its affiliates or agents shall not be liable for incidental or consequential damages of any kind. All Ezurio products are sold pursuant to the Ezurio Terms and Conditions of Sale in effect from time to time, a copy of which will be furnished upon request. Nothing herein provides a license under any Ezurio or any third-party intellectual property right. Ezurio and its associated logos are trademarks owned by Ezurio and/or its affiliates.