

Bluetooth™ Connection Kit

Featuring the Socket Bluetooth Card™ and Windows CE software for adding Bluetooth wireless connectivity to the following mobile computers:

- *Windows Powered Pocket PCs*
- *Handheld PC 2000s*
- *Handheld PC Pros*

User's Guide



How this Manual is Organized

This manual is designed to help you install and use the Socket Bluetooth Connection Kit.

Chapter 1, **Introduction**, describes key features of the Bluetooth Connection Kit and identifies package contents.

Chapter 2, **Basic Setup**, explains the minimum steps you need to complete to install and use the Bluetooth Card.

Chapter 3, **Advanced Features**, shows additional steps you may choose to perform while installing and/or operating the Bluetooth Card.

These optional steps include: setting up your Bluetooth Card, viewing device properties, setting up your favorite device, using the Bluetooth Device Discovery Wizard, using the Bluetooth Device Bonding Wizard, changing views, and deleting an item from the Bluetooth Devices manager.

Appendix A, **Specifications**, provides technical specifications for the Bluetooth Card.

Appendix B, **Safety and Usage Tips**, lists guidelines you should follow to use the Bluetooth Card safely and efficiently, including information about product care, antenna care, use while driving or in an aircraft, and radio frequency exposure.

Appendix C, **Troubleshooting**, gives advice for fixing the most common problems you may encounter using the Bluetooth Card.

Appendix D, **Technical Support**, explains Socket's technical support policy for the Bluetooth Card.

Table of Contents

CHAPTER 1 INTRODUCTION	4
Overview	4
Contents of the Connection Kit	5
Installation Steps Summary	6
CHAPTER 2 BASIC SETUP	7
Install the Software	7
Insert the Card	9
Get Connected!	10
Set up Dial-up Networking	12
CHAPTER 3 ADVANCED FEATURES	13
Turn Radio Transmitter ON/OFF	14
Set up Your Bluetooth Card	15
View Device Properties	16
Set up Your Favorite Device	17
Discover Bluetooth Device(s)	18
Bond with Discovered Device(s)	19
Change Views	20
Delete a Device from the Folder	21
APPENDIX A SPECIFICATIONS	22
APPENDIX B SAFETY AND USAGE TIPS	23
Product Care	23
Antenna Care	23
Efficient Use	23
Driving	23
Aircraft	23
Radio Frequency Exposure	24
APPENDIX C TROUBLESHOOTING	25
APPENDIX D TECHNICAL SUPPORT	27
LIMITED WARRANTY	28
COPYRIGHT NOTICE	30
REGULATORY COMPLIANCE	31

Chapter 1 Introduction

Overview

The Socket Bluetooth Connection Kit makes it easy to add Bluetooth wireless connectivity to a Windows Powered Pocket PC or Windows CE-based HPC 2000 or Handheld PC Pro. It's perfect for connecting your Pocket PC or HPC 2000 wirelessly to your favorite Bluetooth phone.

The Bluetooth Card is the only plug-in card to incorporate all Bluetooth components within the CompactFlash Type I form factor. With a CompactFlash-to-PC Card adapter, the Bluetooth Card also works in a PC Card (PCMCIA) slot of a Windows CE-based HPC 2000 or Handheld PC Pro. You can purchase adapters separately online at:

www.esend.com/socket/product.asp?sku=AC4000%2D978



The Bluetooth Connection Kit includes a Bluetooth Card and Bluetooth software, including drivers, the Get Connected! Wizard, and the Bluetooth Devices manager.

For quickly connecting your mobile computer to a Bluetooth phone, use the Get Connected! Wizard. To connect to non-phone devices, use the advanced features found in the Bluetooth Devices manager.

The Bluetooth Device Manager runs in the background to deal with local device discoverability, connectability, bonding and encryption issues and makes it easy to track and organize previously discovered remote devices.

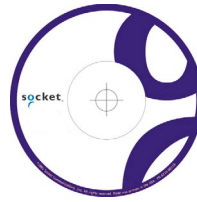
This *User's Guide* briefly shows how to install and use the Bluetooth Card. This guide shows Pocket PC screens. HPC 2000s and Handheld PC Pros will have functionally equivalent screens.

To register the card, visit: <http://www.socketcom.com/product/prodreg.htm>
For software updates, please check: www.socketcom.com

Contents of the Connection Kit

The Socket Bluetooth Connection Kit includes these items:

- A Socket Bluetooth Card (CompactFlash card Type I)
- The *Socket Bluetooth Card Installation CD*
- The *Bluetooth Card Quick Start Guide*
- A registration card



To register the card online, visit: www.socketcom.com/product/prodreg.htm

Installation Steps Summary

It takes only four steps to install and use the Socket Bluetooth Card:

STEP 1: Install the software.

STEP 2: Insert the Bluetooth Card into your mobile computer.

STEP 3: Get Connected!

STEP 4: Set up dial-up networking.

This *User's Guide* also covers seven advanced features you can perform while installing and/or using the Bluetooth Card.

OPTIONAL: ADVANCED FEATURES

- Set up your Bluetooth Card.
- Use the Bluetooth Devices manager.
 - View device properties.
 - Set up your favorite device.
 - Discover other Bluetooth device(s).
 - Bond with another Bluetooth device.
 - Change views.
 - Delete a device from your folder.



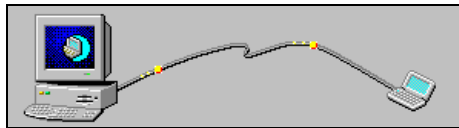
Chapter 2 Basic Setup

This chapter covers the minimum steps you must complete to install and use the Bluetooth Card.

STEP 1: Install the Software

Follow these steps BEFORE inserting the Bluetooth Card:

1. Make an active partnership between the mobile computer and a host PC.



An active partnership exists if data can be moved between the mobile computer and the host PC via a serial/USB/Ethernet cable or cradle.

2. Insert the *Socket Bluetooth Card Installation CD* into the host PC.



3. Run the SETUP.EXE file on the CD-ROM. Do any of the following:
 - Go to **My Computer** to access your CD drive and run the file.
 - Use Windows Explorer to access your CD drive and run the file.
 - Click **Start** then **Run** on the host PC. Type **X: \SETUP .EXE** (Replace X with your CD drive letter.)
4. Follow the instructions on the host PC screen until installation is done.

Note: After completing setup, your host PC may display the following:

- An **Application Downloading Complete**. Click **OK**.
- A screen telling you to check your mobile device screen for extra installation steps that may be necessary. Click **OK**.

5. In the **Dialog** screen, enter a friendly name for your mobile computer.
Tap **ok**.



6. Disconnect the mobile computer from the connection cable or cradle.
Soft reset the mobile computer. Push the reset button, often on the back of the mobile computer.

STEP 2: Insert the Card

Important!

*Do NOT insert the card upside down or shove the card in too hard.
Damage may occur!*

CompactFlash I/O Slot

Insert the card directly into the slot. Make sure the blue label is on top.



When properly inserted, the card will be fully contained within the slot.

After the mobile computer recognizes the card, you will get a message warning against using Bluetooth on airplanes. Tap **OK**.

PC Card (PCMCIA) Slot

Plug the card into the adapter*, with the blue label on top. Then insert the combined unit into the PC Card slot.




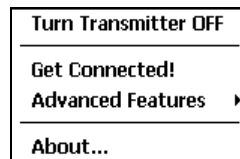
When properly inserted, the card plus adapter will be fully contained within the slot.

After the mobile computer recognizes the card, you will get a message warning against using Bluetooth on airplanes. Tap **OK**.

STEP 3: Get Connected!

Follow these steps to connect your Pocket PC or HPC to a Bluetooth phone:

1. Tap on the Bluetooth task tray icon  (visible from the **Today** screen for Pocket PCs). In the pop-up menu, select **Get Connected!**



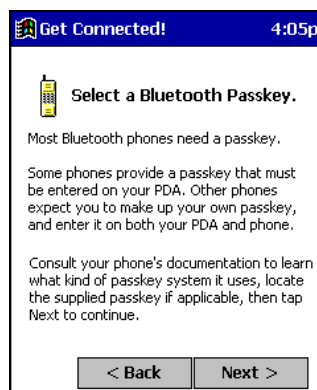
2. Follow the **Bluetooth "Get Connected!" Wizard**. In the welcome screen, use the drop-down list to select the type of phone you are using. The wizard will provide tailored instructions based on your selection.

Note: This example is for a generic phone. Your phone may differ.

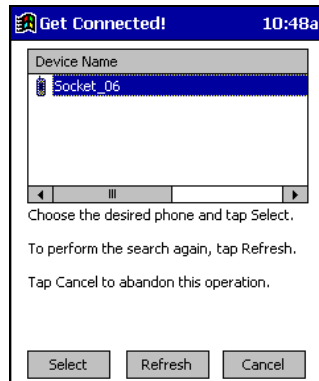


3. As prompted, find out what kind of passkey system your phone uses.

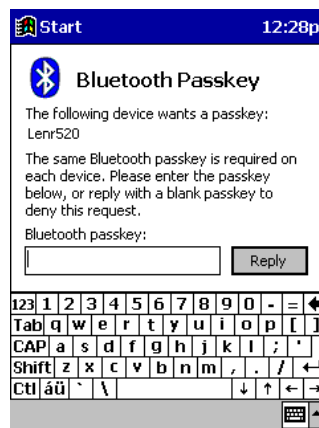
Important! If your phone has a pre-assigned passkey, have it ready.
(e.g., The passkey of a Nokia phone is on a label in the box and/or on the battery.)



4. When the search is complete, a screen will list the discovered Bluetooth phones. Choose the phone you wish to connect to, and tap **Select**. A service discovery phase will begin, about 10-15 seconds.



5. As prompted in the next screen, set your phone to “Bondable” or “Pairable” mode. For instructions, refer to your phone manual. Have your passkey ready, then tap **Next>**.
6. In the next screen, enter the passkey. Tap **Reply**.

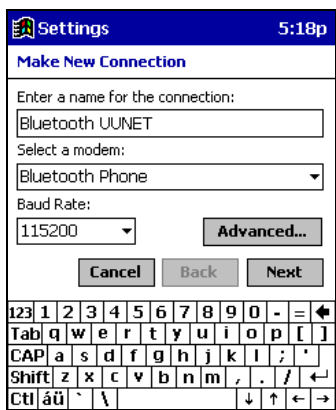


7. Enter the same passkey into your mobile phone. Your mobile phone may automatically display a message asking for your passkey, or it may automatically accept the passkey entered.
8. In the next screen, tap **Finish**. After successfully connecting, the phone will appear in your **Bluetooth Devices** folder.

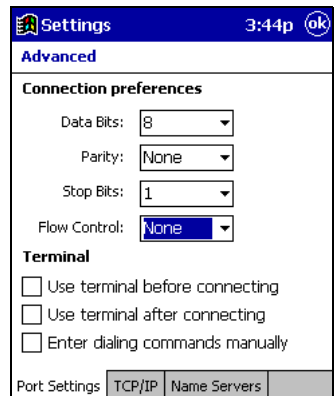
Note: Exchanging passkeys allows your phone and mobile computer to set up an encrypted data link to provide you a secure communication path.

STEP 4: Set up Dial-up Networking

1. Configure your Dial-up Networking connection as you would with any ordinary modem, and select **Bluetooth Phone** as your modem.



2. When configuring your advanced modem settings, in the **Port Settings** screen, in the **Flow Control** field, select **None**. Tap **ok**.



3. When the Socket virtual COM port is opened, a connection is automatically attempted with the associated Bluetooth device – you do not need to go through any extra Bluetooth “connection” step. The Bluetooth connection automatically ends when the Socket virtual COM port is closed.
4. To use a different Bluetooth phone, you can keep the same Dial-up Networking setup. Just run the **Get Connected! Wizard** again, choose the desired phone, and make the phone your new **Favorite** when prompted.

Alternatively, you can go to the **Favorites** screen in the **Bluetooth Devices** folder and select a different device for **My Favorite Device**.

Chapter 3 **Advanced Features**


This chapter explains optional steps you may choose to perform while installing and/or using the Bluetooth Card.

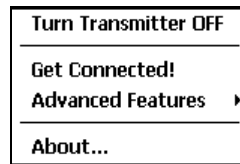
The steps covered in this chapter include:

- Turning the radio transmitter on/off
- Setting up your Bluetooth Card
- Viewing device properties
- Setting up a Favorite Device
- Using the Bluetooth Device Discovery Wizard
- Using the Bluetooth Device Bonding Wizard
- Changing views
- Deleting an item from the Bluetooth Devices folder

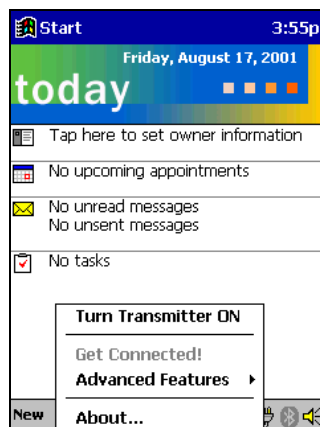
Turn Radio Transmitter ON/OFF

You may want to turn off the radio transmitter to save power or if you are entering an area with radio restrictions.

1. After you insert the Bluetooth Card, the Bluetooth icon  should appear in the task tray (visible from the **Today** screen for Pocket PCs). Tap on the icon.
2. In the pop-up menu, select **Turn Transmitter OFF**.




3. The Bluetooth Card radio transmitter will shut off. The Bluetooth icon in the task tray will become gray, as will relevant menu options (e.g., **Get Connected!**).

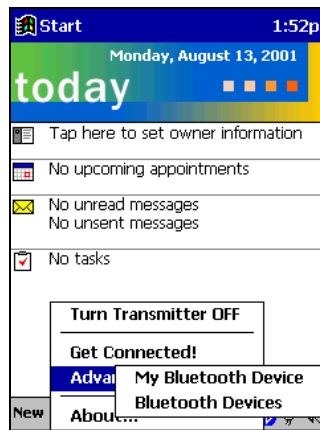


4. To turn the radio transmitter back on, in the pop-up-menu, select **Turn Transmitter ON**.

Set up Your Bluetooth Card

Note: If you use the Get Connected! Wizard, which is recommended for normal usage, then this step is not necessary. This step would be used to change the friendly name of your mobile computer:

1. After you insert the Bluetooth Card, the Bluetooth icon  should appear in the task tray (visible from the **Today** screen for Pocket PCs). Tap on the icon.
2. In the pop-up menu, select **Advanced Features**, then **My Bluetooth Device**.



3. In the **My Bluetooth Device** screen, enter a **Friendly Name** and make any desired configuration changes. When done, tap **ok**.



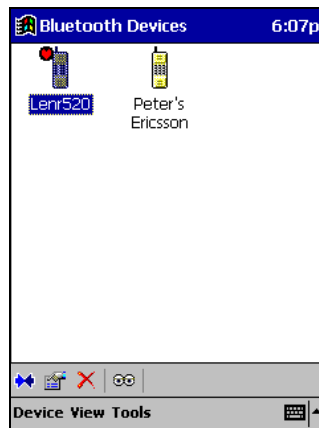
Note:

- In normal phone connect operation, **Discoverable** mode is not needed and should be disabled.
- If you do enable **Discoverable** mode, the card will consume power. To save power, remember to disable it when not needed.

View Device Properties

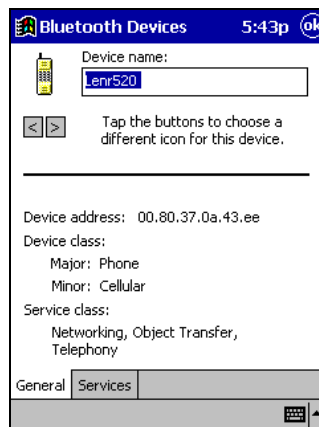
Follow these steps to view the properties of an already discovered device. These functions would be used for connecting to a non-phone device.

1. If not open, launch the **Bluetooth Devices** folder.
Tap on the Bluetooth icon (in the **Today** screen for Pocket PCs).
Select **Advanced Features** then **Bluetooth Devices**.
2. Select the Bluetooth device you want to view information about.



3. Tap on the **Properties** icon, or tap on **Device** then select **Properties**.

Use the **General** and **Services** screens to configure and/or research device properties. If needed, assign a new device type icon by tapping on the arrow buttons in the **General** screen. When done, tap **ok**.



Set up Your Favorite Device

Follow these steps to set up a default device in the **Bluetooth Devices** folder. This is needed only if you want to set up a non-phone device as a favorite.

Note: If the folder has only one device, it will automatically be the favorite.

1. Tap on **Tools** and select **My Favorites**.




2. In the **My Favorite Device** menu, select a default device.



Note: The “favorite” device will be associated with the Bluetooth virtual COM port with the friendly name “Bluetooth Phone.” This would be used in the “Dial-up Networking” setup selection.

What if I can't connect to a device in the Bluetooth Devices folder?


You can connect to a device only if its services have been successfully discovered. Follow these steps to perform a service discovery:

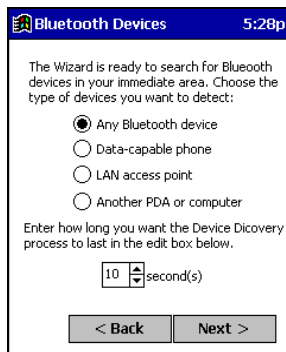
*With the device selected in the folder, tap on **Properties** , then select the **Services** tab. Tap the **Update** button.*

If you have problems discovering services for a device, please email askbluetooth@socketcom.com and report what device you are using.

Discover Bluetooth Device(s)

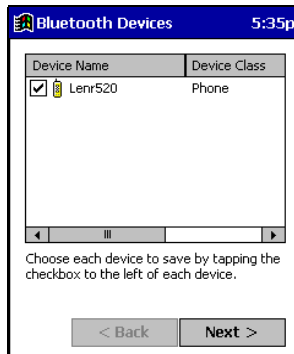
Follow these steps to discover other Bluetooth devices nearby, including non-phone devices. This is a more detailed alternative to using the Bluetooth “Get Connected!” Wizard, and it will allow you to discover both phone and non-phone devices.

1. If not open, launch the **Bluetooth Devices** folder:
Tap on the Bluetooth icon (in the **Today** screen for Pocket PCs).
Select **Advanced Features** then **Bluetooth Devices**.
2. In the **Bluetooth Devices Folder**, tap on the **Device Discovery** icon .
Or you can tap on **Tools**. In the pop-up menu, select **Device Discovery**.
3. Follow the **Bluetooth Device Discovery Wizard** to search for Bluetooth devices nearby. When prompted, select the device type you seek.



Note: The <Back button has been disabled in some screens.

4. When the search is complete, a screen will report the discovered Bluetooth devices. Check the box next to any device you wish to save information about, (i.e., any devices you wish to connect to). Tap **Next>**.

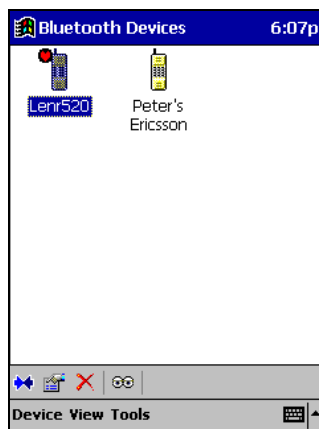


5. A service discovery phase will begin, 10-15 seconds per chosen device.
6. In the next screen, tap **Finish**.

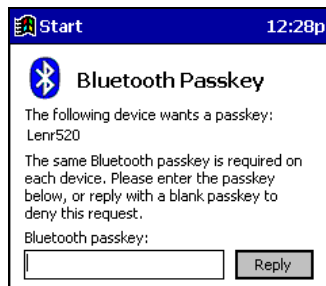
Bond with Discovered Device(s)

Follow these steps to bond with an already discovered Bluetooth device. In most cases, bonding is for establishing secure communications with a Bluetooth-enabled phone. This is a more detailed alternative to using the Bluetooth “Get Connected! Wizard.”

1. If not open, launch the **Bluetooth Devices** folder:
Tap on the Bluetooth icon (in the **Today** screen for Pocket PCs).
Select **Advanced Features**, then **Bluetooth Devices**.
2. Select the Bluetooth device you want to bond with.



3. Tap on the **Bond** icon. Or tap on **Device**, then select **Bond**.
4. The **Bluetooth Device Bonding Wizard** will launch. Follow the wizard to bond with your selected device. As prompted, make sure the Bluetooth device that you want to bond with is in Bondable mode.
5. If the remote device is set up to accept bonding, a **Bluetooth Passkey** screen will appear. To continue bonding, enter the correct passkey and tap **Reply**.

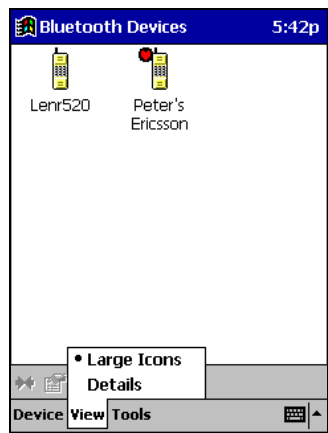


6. When you have successfully bonded with the other device, tap **Finish**.

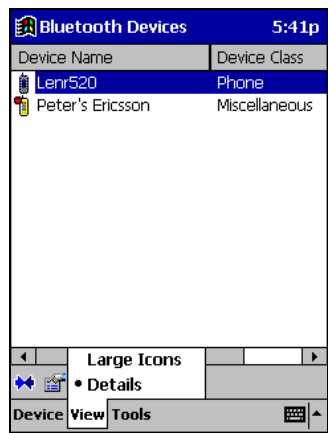
Change Views

You can switch between the **Large Icons** or **Details** views for the **Bluetooth Devices** folder.

- 1. In **Bluetooth Devices**, tap on **View**.
- 2. In the pop-up menu, choose between **Large Icons** or **Details**.




Large Icons view

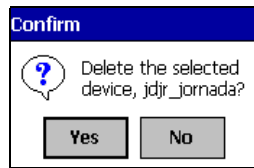


Details view

Delete a Device from the Folder

If you no longer plan to connect with it, you can delete a device from the **Bluetooth Devices** folder.

1. If not open, launch the **Bluetooth Devices** folder. Select the device you wish to delete.
2. Tap on the **Delete** icon . Or tap on **Device** then select **Delete**.
3. A **Confirm** screen will appear. Tap **Yes**.



Appendix A Specifications

Physical Characteristics:

CF I/O Card Size: 1.43 x 1.69 x 0.13 in (36.4 x 42.8 x 3.3 mm)

Power Consumption (3.3 V Supply):

Idle: 1.4 mA (4.62 mW)

Active (Maximum): 75 mA (248 mW)

Interface Standards:

CompactFlash Interface: CompactFlash I/O, Type I

With CompactFlash-to-PC Card Adapter: PCMCIA, Type II

Serial Communications: TTL

Operating System Support:

Windows CE v3.0 and v2.11

Software Compatibility:

Windows COM port

Hardware Compatibility:

Standard Card (without PC Card adapter):

Handheld PC Pro with Windows CE v2.11 or greater

Pocket PC or HPC 2000 with Windows CE v3.0 or greater

With CompactFlash-to-PC Card adapter:

Handheld PC Pro or HPC 2000 with Windows CE v2.11 or greater.

Software Included:

Socket Bluetooth Card Installation CD

Compatible Applications:

Warranty:

CompactFlash Card: Three years

Certification:

FCC: Part 15, Class B

C-TICK s.182

Bluetooth 1.0b with critical errata

ETS 300 328

ETS 300 826

Appendix B Safety and Usage Tips

Product Care

- Do not expose your product to liquid, moisture or extreme humidity.
- Do not expose your product to extreme high or low temperatures.
- Do not expose your product to lit candles, cigarettes, or cigars, or to open flames, etc.
- Do not drop, throw or try to bend the product, as rough treatment could damage it.
- Do not paint your product, as the paint could obstruct parts and prevent normal use.
- Do not attempt to disassemble your product: a broken warranty seal will void the warranty. The product does not contain consumer serviceable components. Should your Bluetooth Card need service, please contact Socket technical support at: techsupport@socketcom.com.
- Treat your product with care. Keep in a clean and dust-free place.
- Changes or modifications of this product, not expressly approved by Socket, may void the user's authority to operate the equipment.

Antenna Care

Do not place a metallic shield around your Bluetooth Card since it will reduce the radio transmission efficiency.

Efficient Use

For optimum performance, please make sure that there is no metallic surrounding your Bluetooth Card.

Driving

RF energy may affect some electronic systems in motor vehicles, such as car stereo, safety equipment, etc. Check with your vehicle manufacturer's representative to be sure that your Bluetooth Card will not affect the electronic system in your vehicle.

Aircraft

- Turn off your Bluetooth Card antenna before boarding any aircraft.
- To prevent interference with communications systems, you must not use your Bluetooth Card while the plane is in the air.
- Do not use it on the ground without permission from the crew.

Radio Frequency Exposure

Your Bluetooth Card is a radio transmitter and receiver. When in operation, it communicates with a Bluetooth-equipped mobile phone or mobile computer by receiving and transmitting radio frequency (RF) magnetic fields in the frequency range 2400 to 2500 MHz. The output power of the radio transmitter is 0.001 Watt.

The Bluetooth Card unit is designed to be in compliance with the RF exposure limits set by national authorities and international health agencies¹ when installed or used separately from other antennas or radio transmitters.

¹ Examples of RF exposure standards and guidelines:

ICNIRP, “Guidelines for limiting exposure to time-varying electric, magnetic, and electromagnetic fields (up to 300 GHz)”, International Commission on Non-Ionizing Radiation Protection (ICNIRP), Health Physics, vol. 74, pp 494-533, April 1998.

99/519/EC, EU Council Recommendation on the limitation of exposure to the general public to electromagnetic fields 0 Hz – 300 GHz, Official Journal of the European Communities, July 12, 1999.

ANSI/IEEE C95.1-1992, “Safety levels with respect to human exposure to radio frequency electromagnetic fields, 3 kHz to 300 GHz”, The Institute of Electrical and Electronics Engineers, Inc., New York, 1991.

FCC Report and Order, ET Docket 93-62, FCC 96-326, Federal Communications Commission (FCC), August 1996.

Radiocommunications (Electromagnetic Radiation Human Exposure) Standard 1999, Australian Communications Authority (ACA), May 1999.

Appendix C Troubleshooting

SYMPTOM:

- I cannot connect to a device in my folder.

POSSIBLE REASONS	SOLUTION
The services for the devices have not been discovered.	In the BT Devices folder, tap on the Properties icon. Tap on the Services tab. In the Services screen, tap on the Update button.

SYMPTOM:

- When I try to connect to my phone, I get a screen that says *Partial Success*.

POSSIBLE REASONS	SOLUTION
The phone is not in Bondable mode.	Set your phone to Bondable mode. If needed, consult your phone's documentation for help.
The passkey is incorrect.	Make sure the same passkey is entered on the phone and your mobile computer. If using a pre-assigned passkey for the phone, verify that your passkey is accurate.

SYMPTOM:

- When I insert the Bluetooth Card, I get a message that says *Unrecognized Card*.

POSSIBLE REASONS	SOLUTION
You did not install the software for the Bluetooth Card yet.	Remove the card and install the software.

SYMPTOM:

- My mobile computer cannot find any Bluetooth devices nearby.

POSSIBLE REASONS	SOLUTION
You are too far from other Bluetooth devices.	Move closer to the other Bluetooth device(s), within a range of 10 meters.
The Bluetooth device(s) nearby are not turned on.	Turn on the Bluetooth device(s) you wish to find.
The Bluetooth device(s) are not in discoverable mode.	Set the Bluetooth device(s) to discoverable mode. If needed, consult the device's documentation for help.

SYMPTOM:

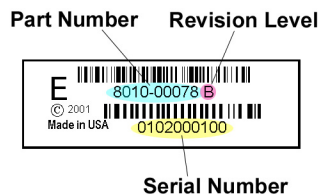
- My mobile computer keeps powering down to protect memory contents.

POSSIBLE REASONS	SOLUTION
Your mobile computer's battery is low.	Recharge the battery.
The Bluetooth Card has been in Discoverable mode for a long time. This mode requires a lot of battery power and should be turned off whenever not needed.	Tap on the Bluetooth icon, then select My Bluetooth Device . Uncheck Discoverable .

Appendix D Technical Support

If you have trouble installing or using the Bluetooth Card, please refer to the “Troubleshooting” section. If problems persist, contact Socket’s technical support department prepared with the following information:

- The part number (including revision level) and serial number of your Bluetooth Card. See the diagram below.
- The manufacturer, model number, and Windows CE version of your mobile computer
- What you did to try to correct the problem



To reach Socket’s technical support department:

- Visit www.socketcom.com/support/support_mail.htm
- Email techsupport@socketcom.com
- Phone 510-744-2720
- Fax 510-744-2727

Please refrain from disassembling the CompactFlash card. Disassembly of this device will void the product warranty.

Limited Warranty

Socket Communications Incorporated (Socket) warrants this product against defects in material and workmanship, under normal use and service, for the following period from the date of purchase:

Plug-in card: Three years

Incompatibility is not a defect covered by Socket's warranty. During the warranty period, Socket will, at its option, repair or replace the defective product at no charge when furnished with proof of retail purchase, provided that you deliver the product to Socket or to an authorized Socket Service Center.

The returned product must be accompanied by a return material authorization (RMA) number issued by Socket or by Socket's Authorized Service Center. If you ship the product, you must use the original container or equivalent and you must pay the shipping charges to Socket. Socket will pay shipping charges back to any location in the contiguous United States. This warranty applies only to the original retail purchaser and is not transferable.

Socket may, at its option, replace or repair the product with new or reconditioned parts and the returned product becomes Socket's property. Socket warrants the repaired or replaced products to be free from defects in material or workmanship for ninety (90) days after the return shipping date, or for the duration of the original warranty period, whichever is greater.

This warranty does not cover the replacement of products damaged by abuse, accident, misuse or misapplication, nor as a result of service or modification other than by Socket.

SOCKET IS NOT RESPONSIBLE FOR INCIDENTAL OR CONSEQUENTIAL DAMAGES RESULTING FROM BREACH OF ANY EXPRESS OR IMPLIED WARRANTY, INCLUDING DAMAGE TO PROPERTY AND, TO THE EXTENT PERMITTED BY LAW, DAMAGES FOR PERSONAL INJURY. THIS WARRANTY IS IN LIEU OF ALL OTHER WARRANTIES INCLUDING IMPLIED WARRANTIES OF MERCHANTABILITY AND FITNESS FOR A PARTICULAR PURPOSE.

Some states do not allow limitation of implied warranties, or the exclusion or limitation of incidental or consequential damages, so that the above limitations or exclusions may not apply to you. This warranty gives you specific legal rights and you may also have other rights which vary from state to state.

This product may contain fully tested, recycled parts, warranted as if new.

For warranty information, phone (510) 744-2700.

Limited Software Warranty

LIMITED WARRANTY. SOCKET warrants that the original disk or CD ROM is free from defects for 90 days from the date of delivery of the SOFTWARE.

CUSTOMER REMEDIES. SOCKET'S entire liability and your exclusive remedy shall be, at SOCKET'S option, either (a) return of the price paid or (b) replacement of the SOFTWARE which does not meet SOCKET'S Limited Warranty and which is returned to SOCKET with a copy of your receipt. Any replacement SOFTWARE will be warranted for the remainder of the original warranty period or 30 days, whichever is longer. THESE REMEDIES ARE NOT AVAILABLE OUTSIDE OF THE UNITED STATES OF AMERICA.

NO OTHER WARRANTIES. SOCKET disclaims all other warranties, either express or implied, including but not limited to implied warranties of merchantability and fitness for a particular purpose, with respect to the SOFTWARE and the accompanying written materials. This limited warranty gives you specific legal rights. You may have others which vary from state to state.

NO LIABILITY FOR CONSEQUENTIAL DAMAGES. In no event shall SOCKET or its suppliers be liable for any damages whatsoever (including, without limitation, damages for loss of business profits, business interruption, loss of business information, or other pecuniary loss) arising out of the use of or inability to use the SOFTWARE, even if SOCKET has been advised of the possibility of such damages. Because some states do not allow the exclusion or limitation of liability for consequential or incidental damages, the above limitation may not apply to you.

EXPORT LAW ASSURANCES. You may not use or otherwise export or reexport the SOFTWARE except as authorized by United States law and laws of the jurisdiction in which the SOFTWARE was obtained. In particular, but without limitation, none of the SOFTWARE may be used or otherwise exported or reexported (a) into (or to a national or resident of) a United States embargoed country or (b) to anyone on the U.S. Treasury Department's list of Specially Designated Nationals or the U.S. Department of Commerce's Table of Denial Orders. By using the SOFTWARE, you represent and warrant that you are not located in, under control of, or a national or resident of any such country or on any such list.

GOVERNMENT END USERS. If the SOFTWARE is supplied to the U. S. Government, the SOFTWARE is classified as "restricted computer software" as defined in clause 52.227-19 of the FAR. The U. S. Government's rights to the SOFTWARE are as provided in clause 52.227-19 of the FAR.

CONTROLLING LAW AND SEVERABILITY. This License shall be governed by the laws of the United States and the State of California. If for any reason a court of competent jurisdiction finds any provision, or portion thereof, to be unenforceable, the remainder of this License shall continue in full force and effect.

August 2001

Document # 6410-00171 A

Copyright Notice

Copyright © 2001 Socket Communications, Inc. All rights reserved.

Socket, the Socket logo and Battery Friendly are registered trademarks of Socket Communications, Inc. Bluetooth Card is a trademark of Socket Communications, Inc. Bluetooth and the Bluetooth logos are trademarks owned by Bluetooth SIG, Inc., U.S.A. and licensed to Socket Communications, Inc. All other brand and product names are trademarks of their respective holders.

The Bluetooth Card includes technology licensed under United States Patent Nos. 4,543,450, 4,603,320, 4,686,506, and 4,972,470.

Reproduction of the contents of this manual without the permission of Socket Communications is expressly prohibited. Please be aware that the products described in this manual may change without notice.

This manual has been prepared with the greatest care regarding its contents. However, in the event that it contains omissions, errors or any other misinformation, please contact SOCKET COMMUNICATIONS at:

Socket Communications, Inc.

37400 Central Court
Newark, CA 94560

Phone: (510) 744-2700

Fax: (510) 744-2727.

Other than the above, Socket Communications can assume no responsibility for anything resulting from the application of information contained in this manual.

Socket Communications requests that you refrain from any applications of the Socket Bluetooth Card that are not described in this manual. Socket Communications also requests that you refrain from disassembling the Bluetooth Card. Disassembly of this device will void the product warranty.

You can track new product releases, software updates and technical bulletins by visiting Socket's web page at: www.socketcom.com.

Regulatory Compliance

This equipment has been tested and found to comply with the limits for a Class B digital device, pursuant to Part 15 of the FCC rules. This equipment is also ETS 300 328, ETS 300 826 and C-TICK compliant. These limits are designed to provide reasonable protection against harmful interference when the equipment is operated in a commercial environment.

This equipment generates, uses, and can radiate radio frequency energy and, if not installed and used in accordance with the instruction manual, may cause harmful interference to radio communications. Operation of this equipment in a residential area is likely to cause harmful interference in which case the user will be required to correct the interference at his or her own expense.

If this equipment does cause harmful interference to radio or television reception, which can be determined by turning the equipment off and on, the user may try to correct the interference by one or more of the following measures:

- Reorient or relocate the receiving antenna of the radio or television.
- Increase the distance separating the equipment and the receiver.
- Connect the equipment to an outlet on a different branch circuit than that of the receiver.
- Consult the dealer or an experienced radio/TV technician for help.

The user may find the following booklet helpful:

How to Identify and Resolve Radio-TV Interference Problems

This booklet is available from the U.S. Government Printing Office, Washington, D.C. 20402.



6410-00171 A

Printed in U.S.A.