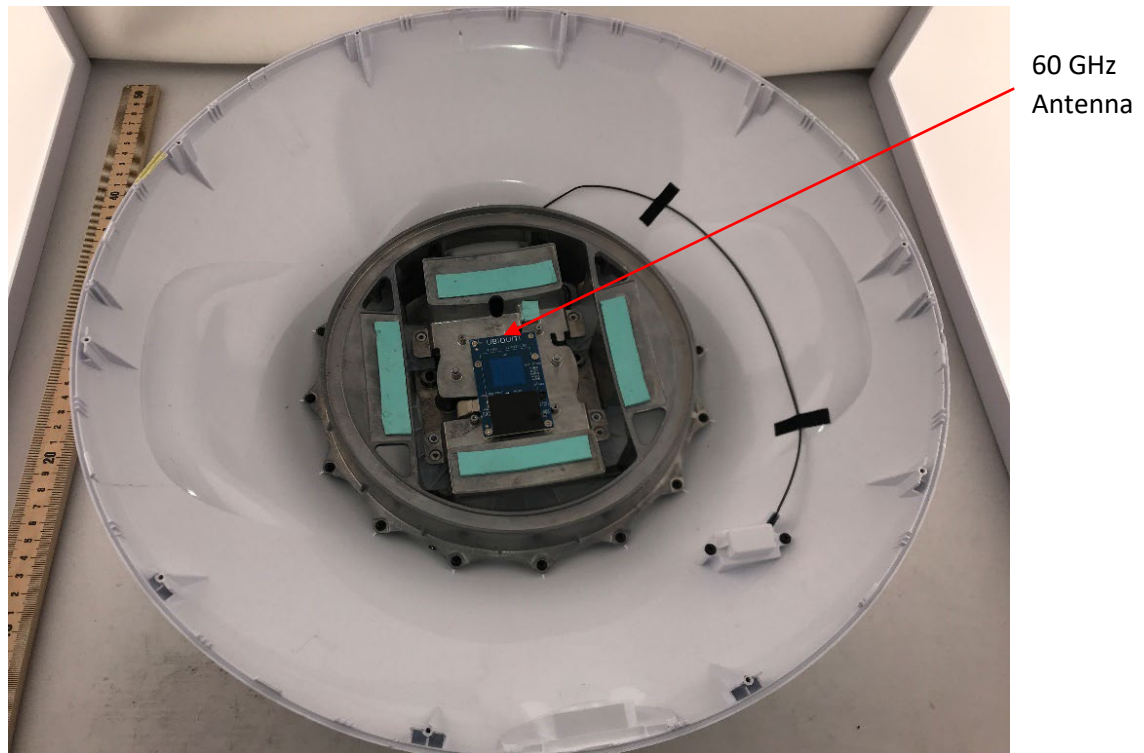
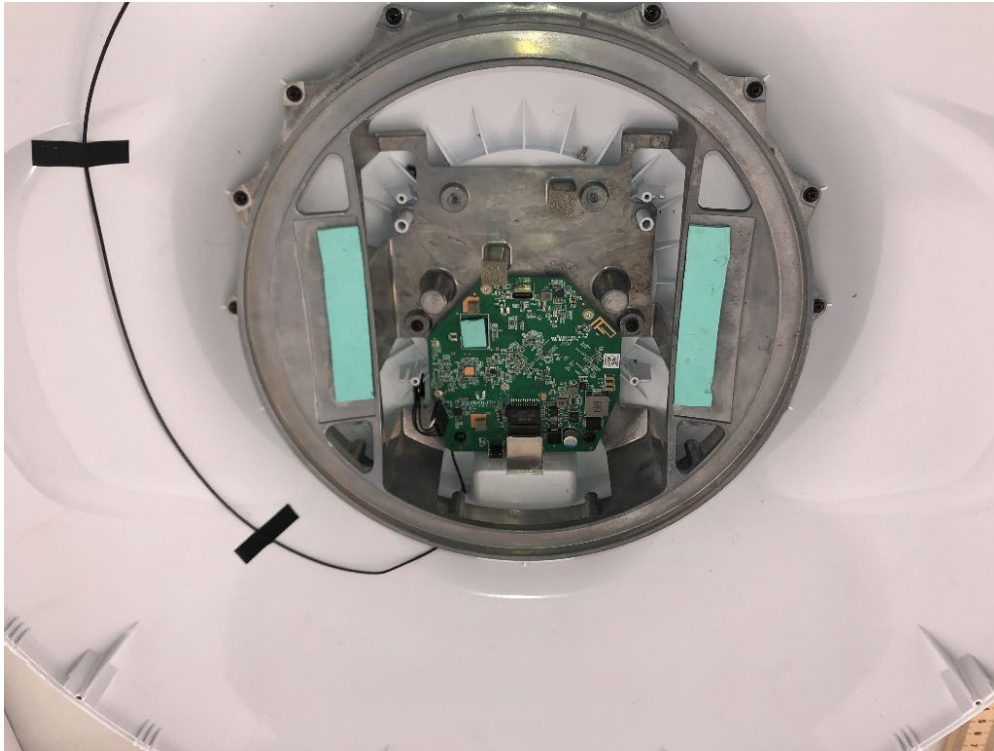


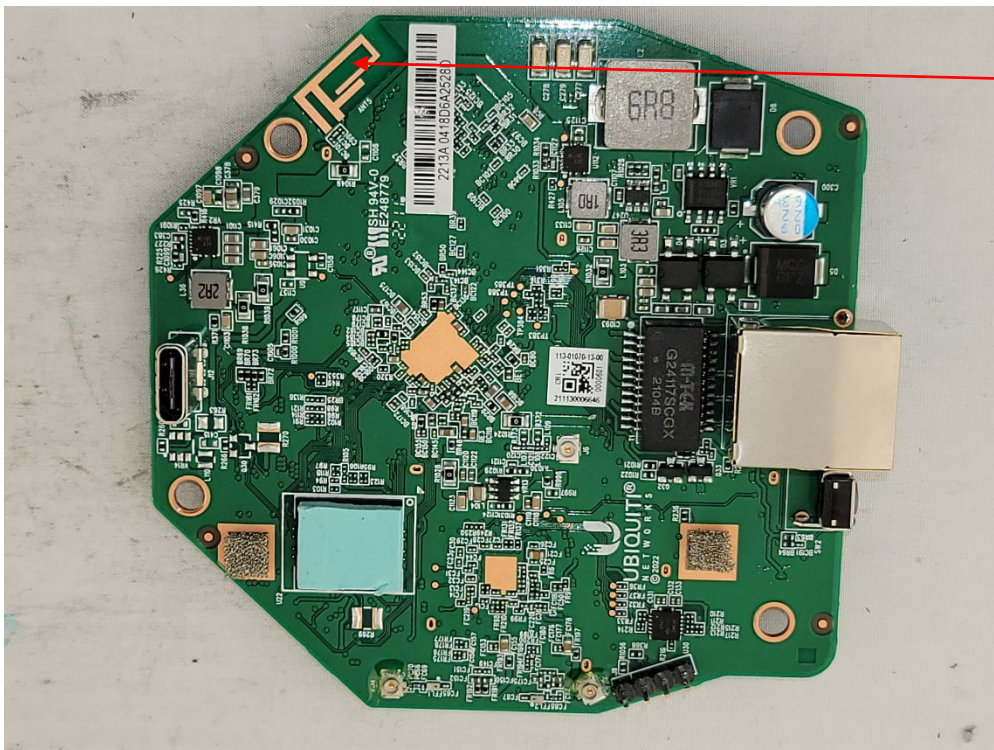
**Photograph 1: Front View of DUT With Reflector**



**Photograph 2: Front View of DUT Reflector and 5 GHz Array Removed**

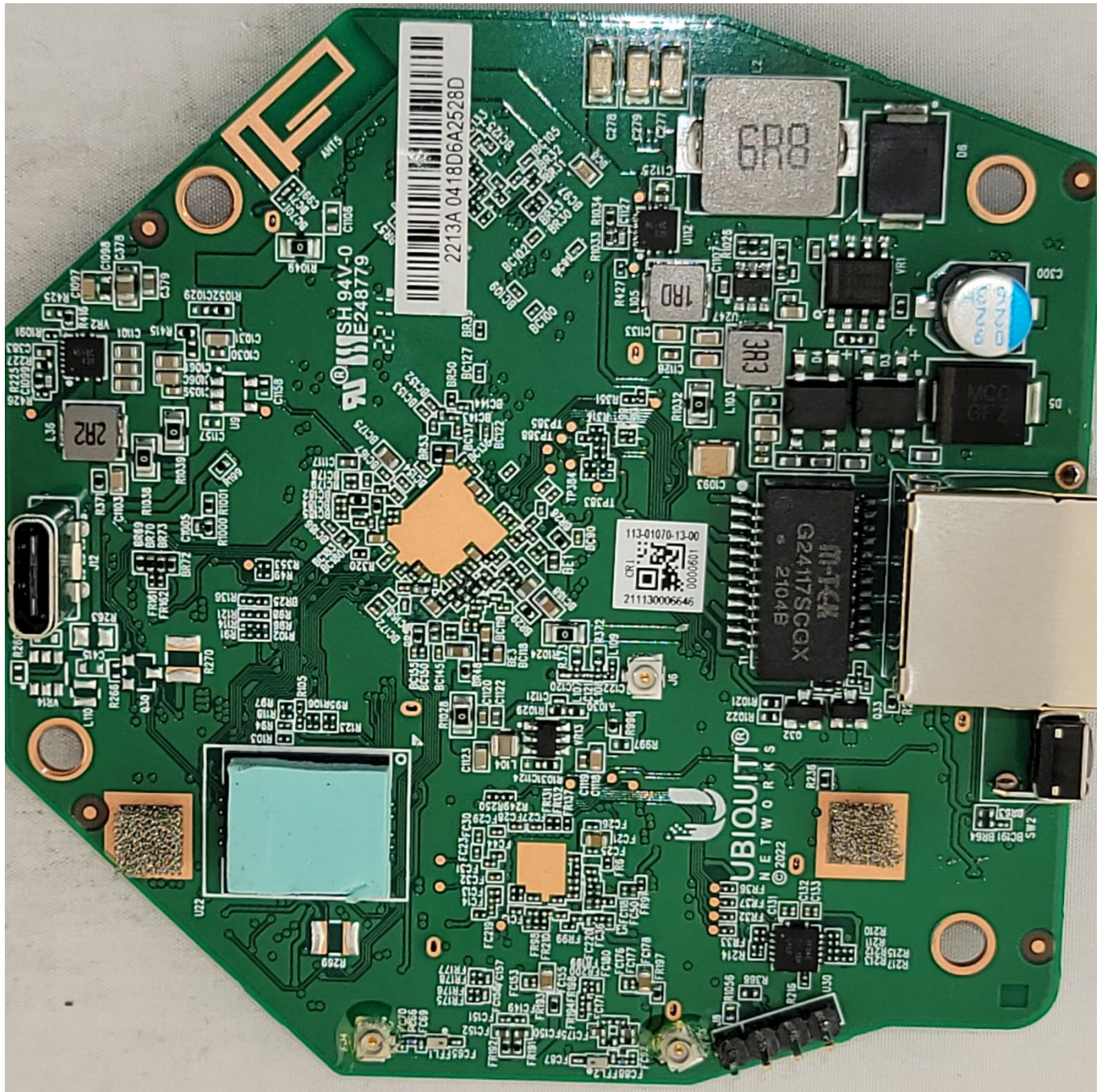


**Photograph 3: View of DUT 60 GHz Array Removed**

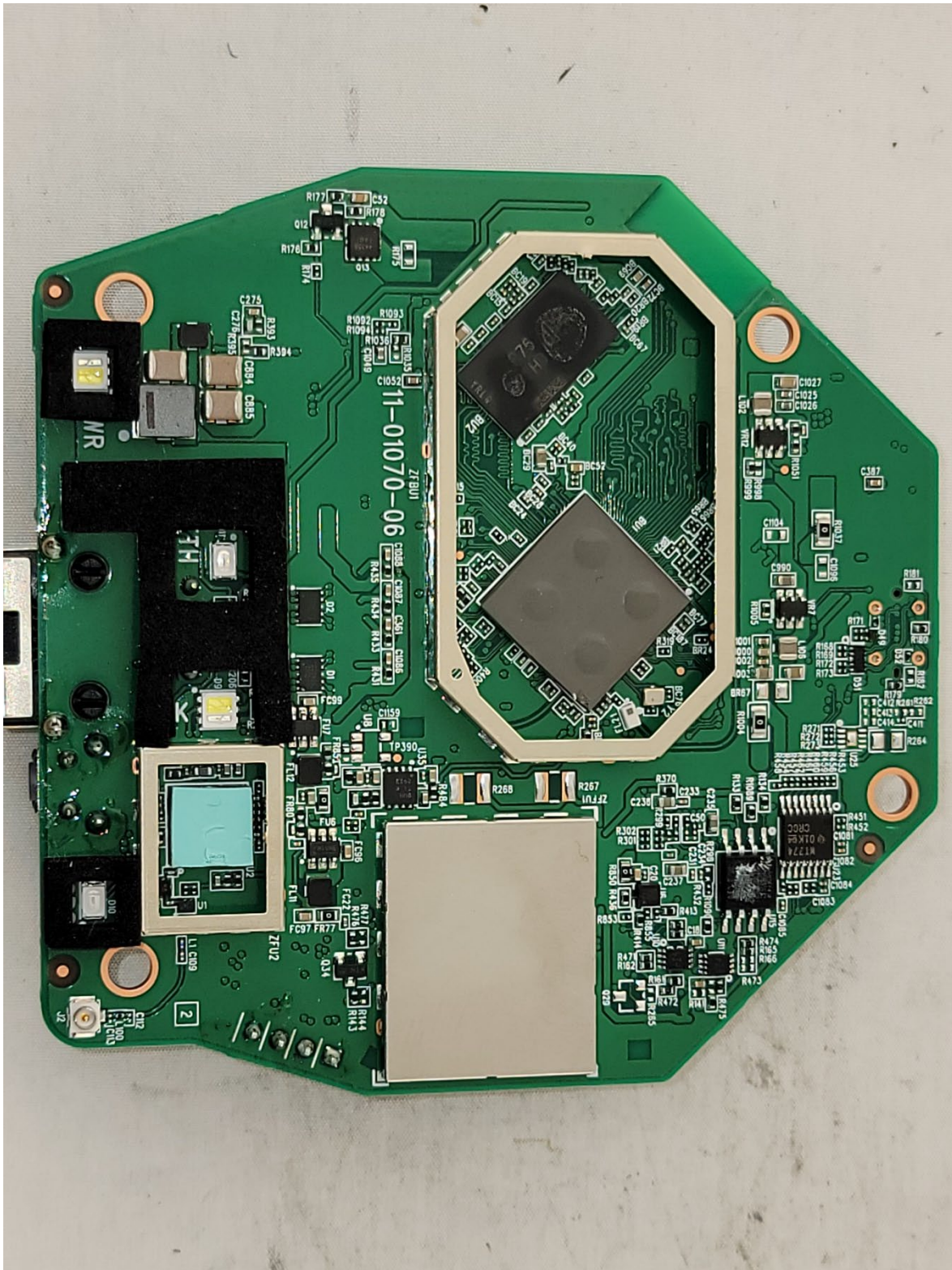


Bluetooth  
Antenna

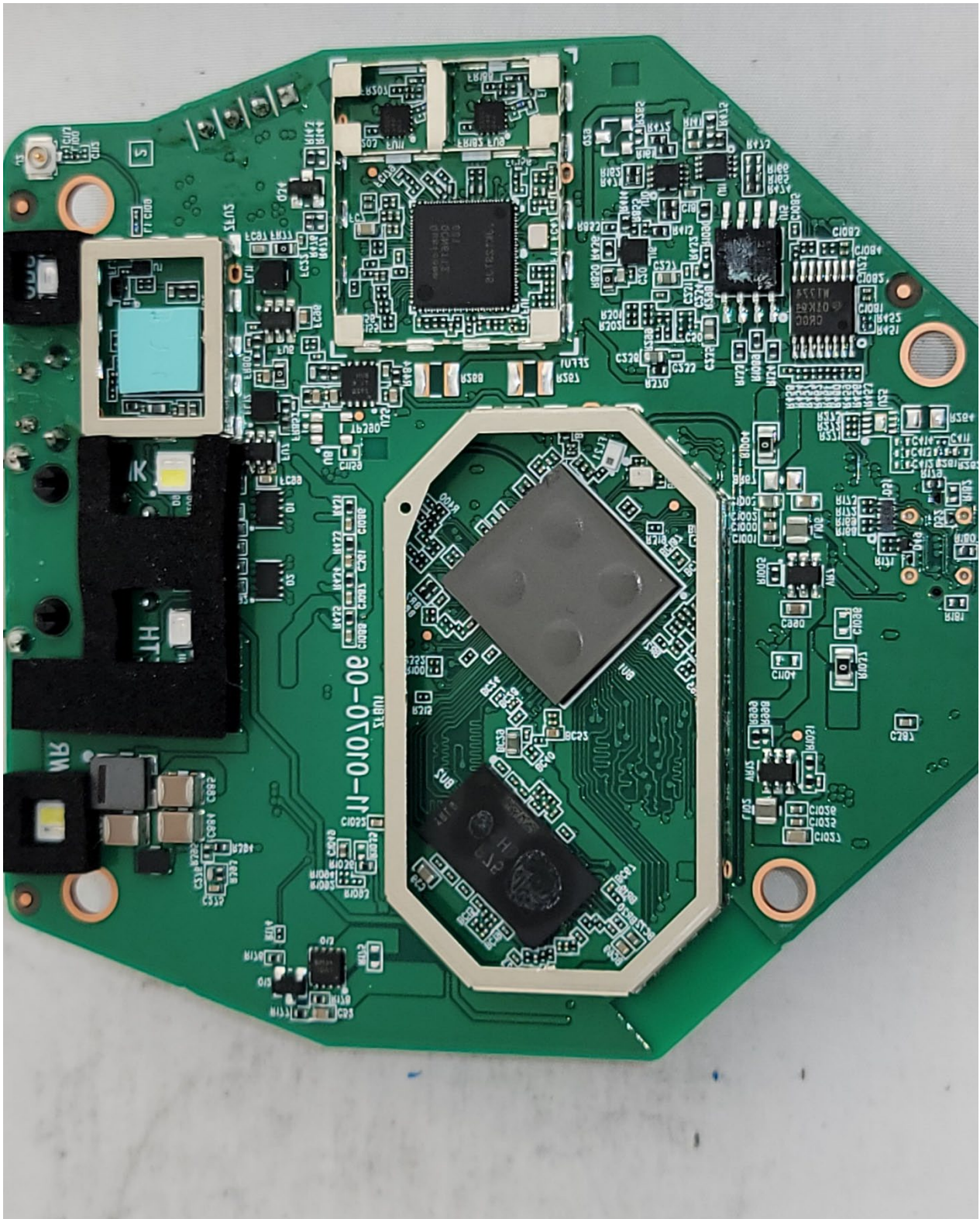
**Photograph 4: Front View Main Printed Circuit Board & Bluetooth Antenna**



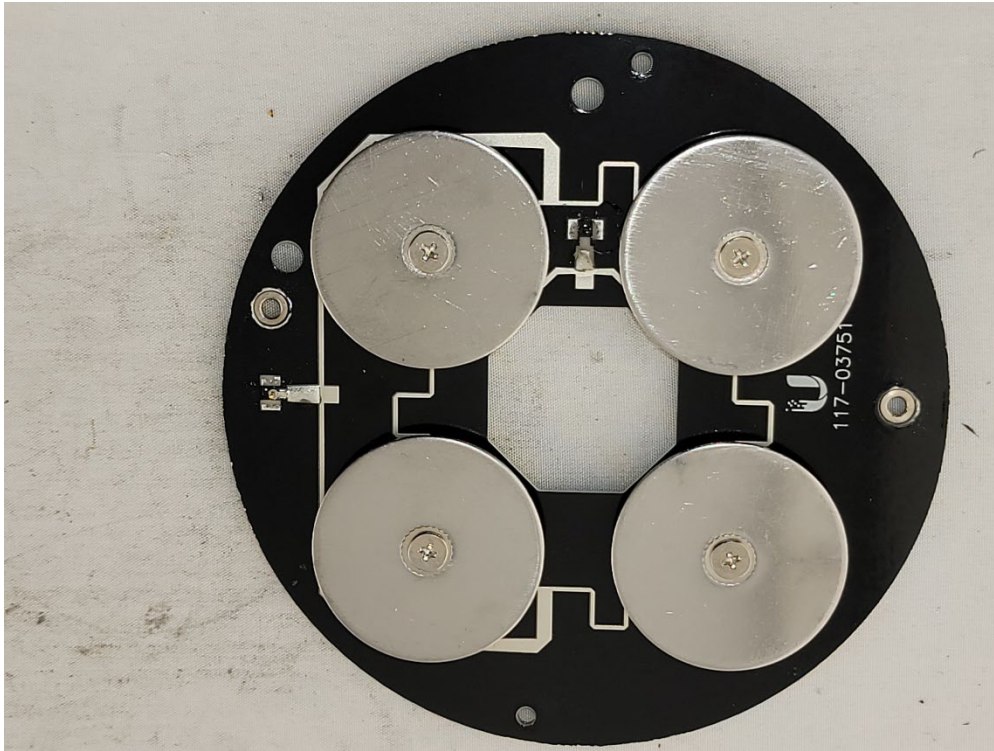
**Photograph 5: Front View of Main Printed Circuit Board**



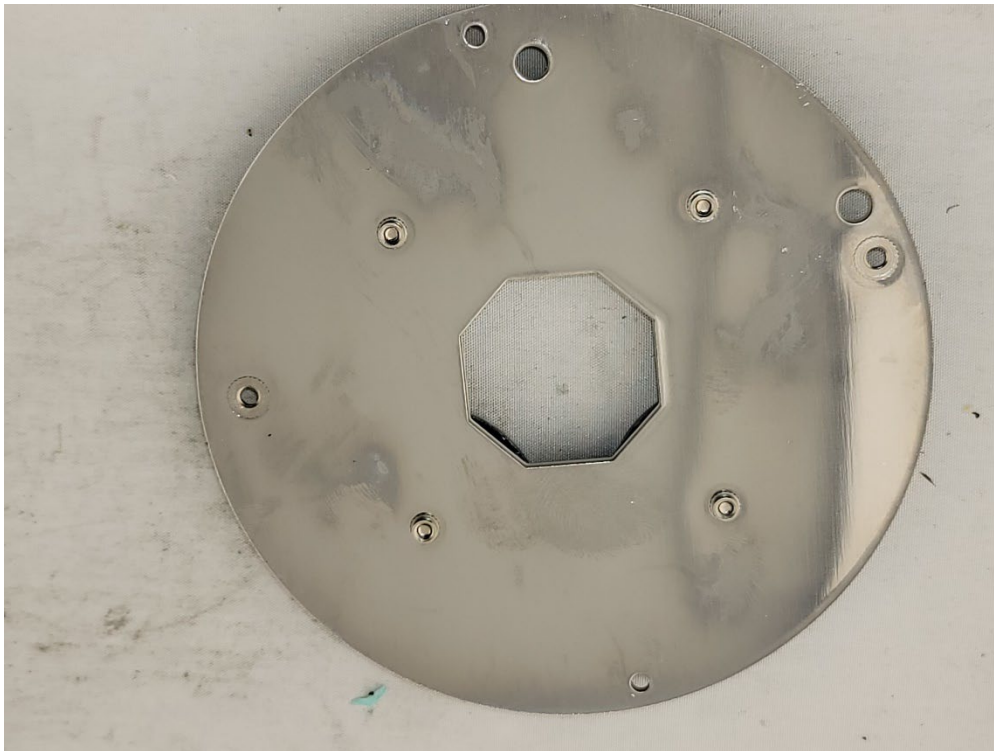
**Photograph 6: Back View of Main Printed Circuit Board EMI Can Installed**



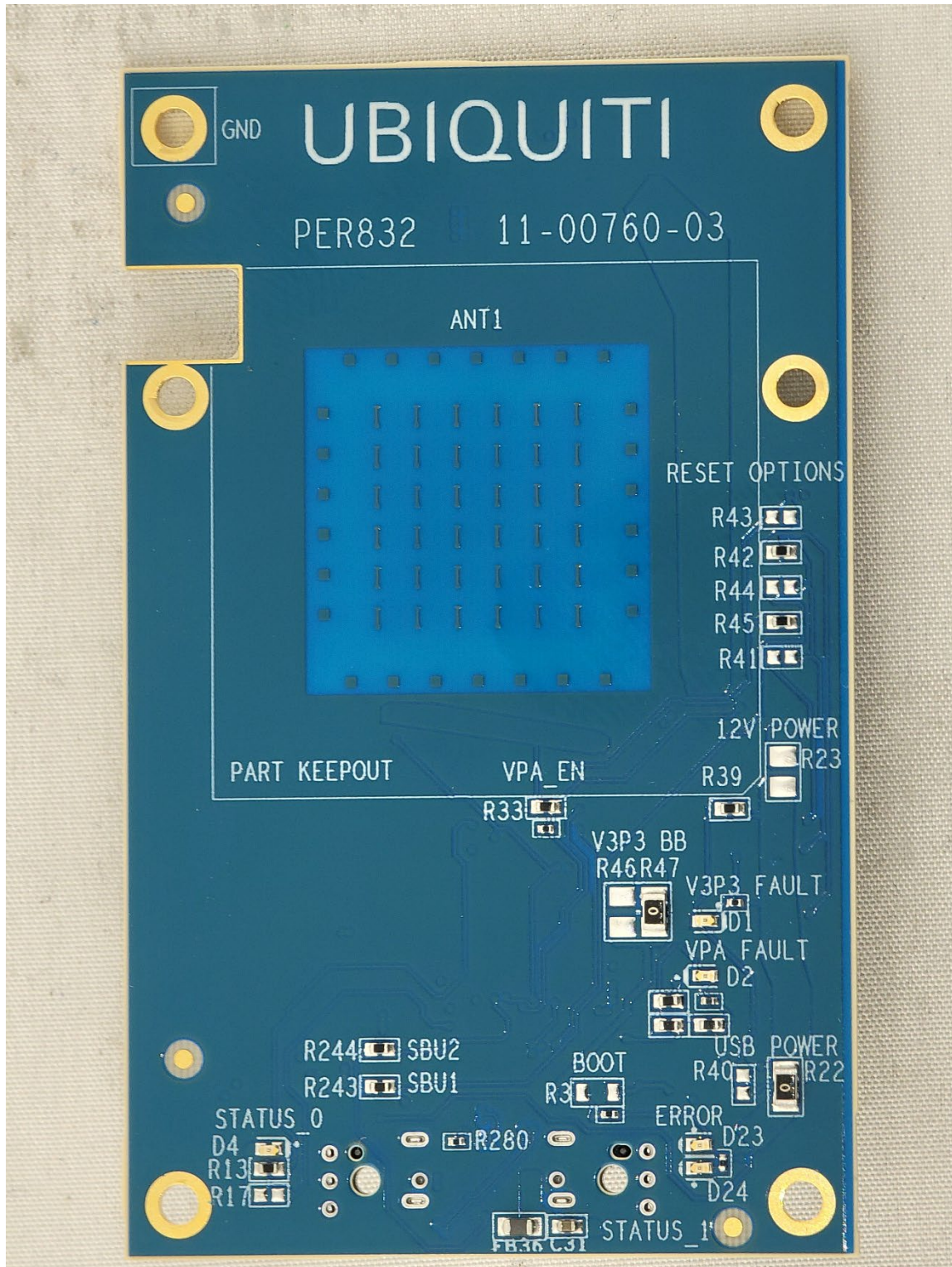
**Photograph 7: Back View of Main Printed Circuit Board EMI Can removed**



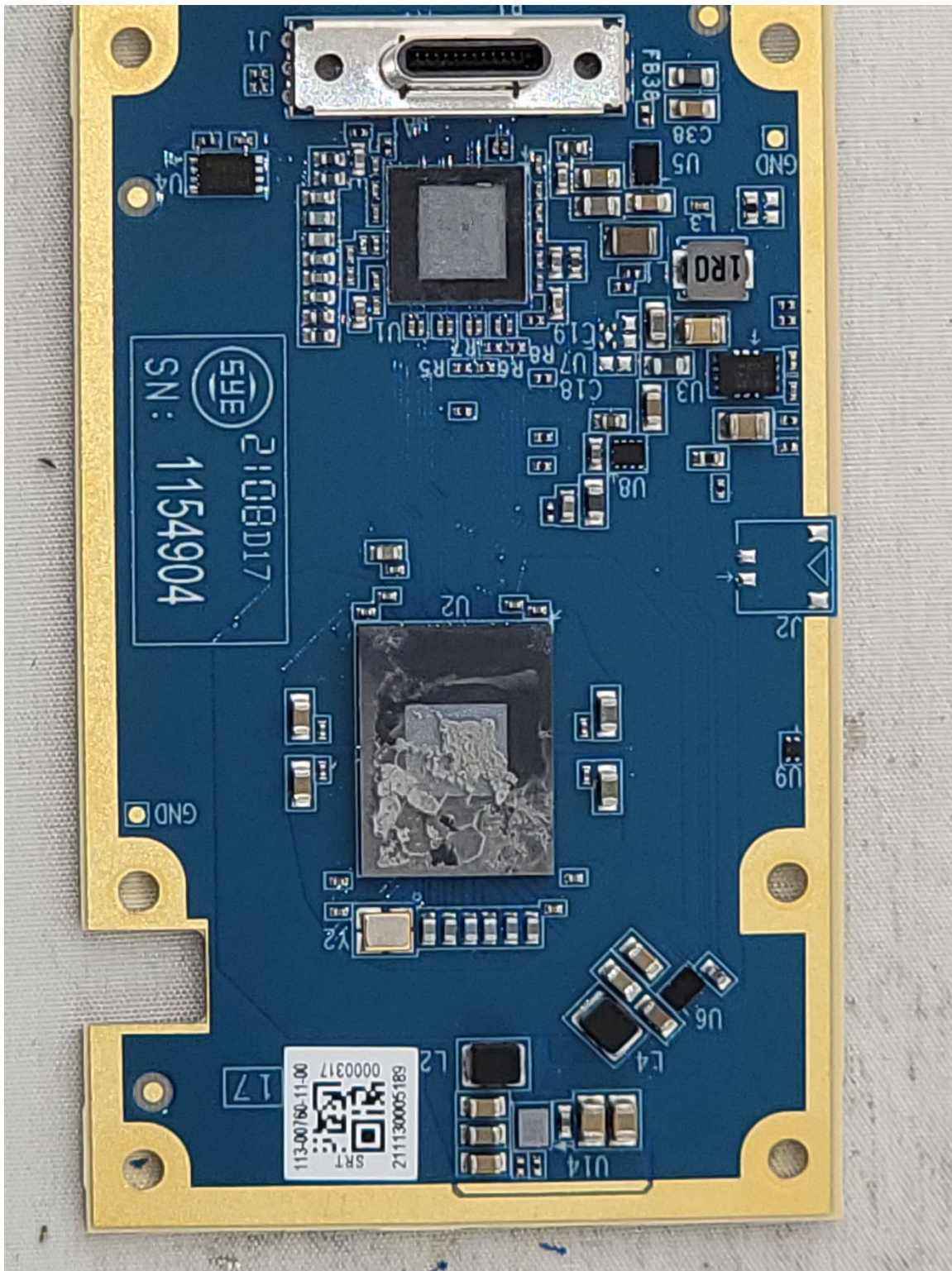
**Photograph 8: Front View of the 5GHz Antenna**



**Photograph 9: Rear View of the 5GHz Antenna**



**Photograph 10: Front View of the 60GHz Antenna PCB**



**Photograph 11: Rear View of the 60GHz Antenna PCB**