



# TEST REPORT

Report Reference No. .... : TRE1612015501 R/C.....: 75431

FCC ID..... : 2AKSGHULUDEV0001

Applicant's name ..... : Shanghai Hulu Devices Co., Ltd.

Address..... : No. 509 Caobao Road, Room 101-2 Bld 9, Xuhui District, Shanghai, China

Manufacturer..... : Shanghai Hulu Devices Co., Ltd.

Address..... : No. 509 Caobao Road, Room 101-2 Bld 9, Xuhui District, Shanghai, China

Test item description ..... : Smartphone Auscultatory Blood Pressure Kit

Trade Mark ..... : Accutension

Model/Type reference..... : XYZ-110

Listed Model(s)..... : -

Standard ..... : FCC CFR Title 47 Part 15 Subpart C Section 15.247

Date of receipt of test sample..... : Dec. 26, 2016

Date of testing..... : Dec. 27, 2016 – Jan. 03, 2017

Date of issue..... : Jan. 03, 2017

Result..... : PASS

Compiled by  
( position+printedname+signature).... : File administrators Shayne Zhu

Shayne Zhu

Supervised by  
( position+printed name+signature).... : Project Engineer Lion Cai

Lion Cai

Approved by  
( position+printed name+signature).... : RF Manager Hans Hu

Hans Hu

Testing Laboratory Name ..... : Shenzhen Huatongwei International Inspection Co., Ltd.

Address..... : 1/F, Bldg 3, Hongfa Hi-tech Industrial Park, Genyu Road, Tianliao, Gongming, Shenzhen, China

**Shenzhen Huatongwei International Inspection Co., Ltd. All rights reserved.**

This publication may be reproduced in whole or in part for non-commercial purposes as long as the Shenzhen Huatongwei International Inspection Co., Ltd. is acknowledged as copyright owner and source of the material. Shenzhen Huatongwei International Inspection Co., Ltd. takes no responsibility for and will not assume liability for damages resulting from the reader's interpretation of the reproduced material due to its placement and context.

## Contents

<b><u>1.</u></b>	<b><u>TEST STANDARDS AND REPORT VERSION</u></b>	<b><u>3</u></b>
1.1.	Applicable Standards	3
1.2.	Report version	3
<b><u>2.</u></b>	<b><u>TEST DESCRIPTION</u></b>	<b><u>4</u></b>
<b><u>3.</u></b>	<b><u>SUMMARY</u></b>	<b><u>5</u></b>
3.1.	Client Information	5
3.2.	Product Description	5
3.3.	Operation state	6
3.4.	EUT configuration	6
3.5.	Modifications	6
<b><u>4.</u></b>	<b><u>TEST ENVIRONMENT</u></b>	<b><u>7</u></b>
4.1.	Address of the test laboratory	7
4.2.	Test Facility	7
4.3.	Equipments Used during the Test	8
4.4.	Environmental conditions	9
4.5.	Statement of the measurement uncertainty	9
<b><u>5.</u></b>	<b><u>TEST CONDITIONS AND RESULTS</u></b>	<b><u>10</u></b>
5.1.	Antenna requirement	10
5.2.	Conducted Emission (AC Main)	11
5.3.	Conducted Peak Output Power	14
5.4.	Power Spectral Density	15
5.5.	6dB bandwidth	17
5.6.	Restricted band	19
5.7.	Band edge and Spurious Emission (conducted)	21
5.8.	Spurious Emission (radiated)	23
<b><u>6.</u></b>	<b><u>TEST SETUP PHOTOS OF THE EUT</u></b>	<b><u>28</u></b>
<b><u>7.</u></b>	<b><u>EXTERNAL AND INTERNAL PHOTOS OF THE EUT</u></b>	<b><u>30</u></b>

## 1. Test standards and Report version

### 1.1. Applicable Standards

The tests were performed according to following standards:

[FCC Rules Part 15.247](#): Frequency Hopping, Direct Spread Spectrum and Hybrid Systems that are in operation within the bands of 902-928 MHz, 2400-2483.5 MHz, and 5725-5850 MHz.

[ANSI C63.10:2013](#): American National Standard for Testing Unlicensed Wireless Devices

[KDB 558074 D01 DTS Meas Guidance v03r05](#): Guidance for Performing Compliance Measurements on Digital Transmission Systems (DTS) Operating under § 15.247

### 1.2. Report version

Version No.	Date of issue	Description
00	Jan. 03, 2017	Original

## 2. Test Description

Test Item	FCC Rule	Result
Antenna requirement	15.203/15.247 (c)	Pass
Line Conducted Emission (AC Main)	15.207	Pass
Conducted Peak Output Power	15.247 (b)(3)	Pass
Power Spectral Density	15.247 (e)	Pass
6dB Bandwidth	15.247 (a)(2)	Pass
Restricted band	15.247(d)/15.205	Pass
Spurious Emission	15.247(d)/15.209	Pass

Note: The measurement uncertainty is not included in the test result.

### 3. SUMMARY

#### 3.1. Client Information

Applicant:	Shanghai Hulu Devices Co., Ltd.
Address:	No. 509 Caobao Road, Room 101-2 Bld 9, Xuhui District, Shanghai, China
Manufacturer:	Shanghai Hulu Devices Co., Ltd.
Address:	No. 509 Caobao Road, Room 101-2 Bld 9, Xuhui District, Shanghai, China

#### 3.2. Product Description

Name of EUT	Smartphone Auscultatory Blood Pressure Kit
Trade Mark:	Accutension
Model No.:	XYZ-110
Listed Model(s):	-
Power supply:	DC 3.7V From internal battery
Adapter information:	-
<b>Bluetooth</b>	
Version:	Supported BT4.0+BLE
Modulation:	GFSK
Operation frequency:	2402MHz~2480MHz
Channel number:	40
Channel separation:	2MHz
Antenna type:	Integral Antenna
Antenna gain:	0dBi

### 3.3. Operation state

#### ➤ Test frequency list

According to section 15.31(m), regards to the operating frequency range over 10 MHz, must select three channel which were tested. the Lowest frequency, the middle frequency, and the highest frequency of channel were selected to perform the test, please see the above gray bottom.

Channel	Frequency (MHz)
00	2402
02	2404
:	:
19	2440
:	:
38	2478
39	2480

#### ➤ Test mode

For RF test items
The engineering test program was provided and enabled to make EUT continuous transmit/receive.
For AC power line conducted emissions:
The EUT was set to connect with the Bluetooth under large package sizes transmission.

### 3.4. EUT configuration

The following peripheral devices and interface cables were connected during the measurement:

- - supplied by the manufacturer
- - supplied by the lab

		Length (m) :	/
		Shield :	/
		Detachable :	/
		Manufacturer :	/
		Model No. :	/

### 3.5. Modifications

No modifications were implemented to meet testing criteria.

## **4. TEST ENVIRONMENT**

### **4.1. Address of the test laboratory**

Laboratory: Shenzhen Huatongwei International Inspection Co., Ltd.

Address: 1/F, Bldg 3, Hongfa Hi-tech Industrial Park, Genyu Road, Tianliao, Gongming, Shenzhen, China

Phone: 86-755-26748019 Fax: 86-755-26748089

### **4.2. Test Facility**

The test facility is recognized, certified, or accredited by the following organizations:

#### **CNAS-Lab Code: L1225**

Shenzhen Huatongwei International Inspection Co., Ltd. has been assessed and proved to be in compliance with CNAS-CL01 Accreditation Criteria for Testing and Calibration Laboratories (identical to ISO/IEC17025: 2005 General Requirements) for the Competence of Testing and Calibration Laboratories, Date of Registration: February 28, 2015. Valid time is until February 27, 2018.

#### **A2LA-Lab Cert. No. 3902.01**

Shenzhen Huatongwei International Inspection Co., Ltd. EMC Laboratory has been accredited by A2LA for technical competence in the field of electrical testing, and proved to be in compliance with ISO/IEC 17025: 2005 General Requirements for the Competence of Testing and Calibration Laboratories and any additional program requirements in the identified field of testing. Valid time is until December 31, 2016.

#### **FCC-Registration No.: 317478**

Shenzhen Huatongwei International Inspection Co., Ltd. EMC Laboratory has been registered and fully described in a report filed with the FCC (Federal Communications Commission). The acceptance letter from the FCC is maintained in our files. Registration 317478, Renewal date Jul. 18, 2014, valid time is until Jul. 18, 2017.

#### **IC-Registration No.: 5377A&5377B**

The 3m Alternate Test Site of Shenzhen Huatongwei International Inspection Co., Ltd. has been registered by Certification and Engineering Bureau of Industry Canada for the performance of radiated measurements with Registration No. 5377A on Dec. 31, 2013, valid time is until Dec. 31, 2016.

Two 3m Alternate Test Site of Shenzhen Huatongwei International Inspection Co., Ltd. has been registered by Certification and Engineering Bureau of Industry Canada for the performance of radiated measurements with Registration No. 5377B on Dec.03, 2014, valid time is until Dec.03, 2017.

#### **ACA**

Shenzhen Huatongwei International Inspection Co., Ltd. EMC Laboratory can also perform testing for the Australian C-Tick mark as a result of our A2LA accreditation.

### 4.3. Equipments Used during the Test

Conducted Emission (AC Main)					
Item	Test Equipment	Manufacturer	Model No.	Serial No.	Last Cal
1	Artificial Mains	Rohde&Schwarz	ESH2-Z5	100028	11/13/2016
2	EMI Test Receiver	Rohde&Schwarz	ESCI3	100038	11/13/2016
3	Pulse Limiter	Rohde&Schwarz	ESHSZ2	100044	11/13/2016
4	EMI Test Software	Rohde&Schwarz	ES-K1 V1.71	N/A	N/A

Radiated Emission					
Item	Test Equipment	Manufacturer	Model No.	Serial No.	Last Cal
1	Ultra-Broadband Antenna	ShwarzBeck	VULB9163	538	11/13/2016
2	EMI TEST RECEIVER	Rohde&Schwarz	ESI 26	100009	11/13/2016
3	EMI TEST Software	Audix	E3	N/A	N/A
4	TURNTABLE	ETS	2088	2149	N/A
5	ANTENNA MAST	ETS	2075	2346	N/A
6	EMI TEST Software	Rohde&Schwarz	ESK1	N/A	N/A
7	HORNANTENNA	ShwarzBeck	9120D	1011	11/13/2016
8	Amplifer	Sonoma	310N	E009-13	11/13/2016
9	JS amplifer	Rohde&Schwarz	JS4-00101800-28-5A	F201504	11/13/2016
10	High pass filter	Compliance Direction systems	BSU-6	34202	11/13/2016
11	HORNANTENNA	ShwarzBeck	9120D	1012	11/13/2016
12	Amplifer	Compliance Direction systems	PAP1-4060	120	11/13/2016
13	Loop Antenna	Rohde&Schwarz	HFH2-Z2	100020	11/13/2016
14	TURNTABLE	MATURO	TT2.0	----	N/A
15	ANTENNA MAST	MATURO	TAM-4.0-P	----	N/A
16	Horn Antenna	SCHWARZBECK	BBHA9170	25841	11/13/2016
17	ULTRA-BROADBAND ANTENNA	Rohde&Schwarz	HL562	100015	11/13/2016

Maximum Peak Output Power / Power Spectral Density / 6dB Bandwidth / Band Edge Compliance of RF Emission / Spurious RF Conducted Emission					
Item	Test Equipment	Manufacturer	Model No.	Serial No.	Last Cal
1	Spectrum Analyzer	Rohde&Schwarz	FSP	1164.4391.40	11/13/2016
2	Power Meter	Anritsu	ML2480B	100798	11/13/2016
3	Power Sensor	Anritsu	MA2411B	100258	11/13/2016

The Cal.Interval was one year



#### 4.4. Environmental conditions

During the measurement the environmental conditions were within the listed ranges:

Temperature:	15~35°C
Relative Humidity:	30~60 %
Air Pressure:	950~1050mba

#### 4.5. Statement of the measurement uncertainty

The data and results referenced in this document are true and accurate. The reader is cautioned that there may be errors within the calibration limits of the equipment and facilities. The measurement uncertainty was calculated for all measurements listed in this test report according to TR-100028-01 "Electromagnetic compatibility and Radio spectrum Matters (ERM); Uncertainties in the measurement of mobile radio equipment characteristics; Part 1" and TR-100028-02 "Electromagnetic compatibility and Radio spectrum Matters (ERM); Uncertainties in the measurement of mobile radio equipment characteristics; Part 2" and is documented in the Shenzhen Huatongwei International Inspection Co., Ltd quality system according to DIN EN ISO/IEC 17025. Furthermore, component and process variability of devices similar to that tested may result in additional deviation. The manufacturer has the sole responsibility of continued compliance of the device.

Hereafter the best measurement capability for Shenzhen Huatongwei laboratory is reported:

Test Items	Measurement Uncertainty	Notes
Transmitter power conducted	0.57 dB	(1)
Transmitter power Radiated	2.20 dB	(1)
Conducted spurious emission 9KHz-40 GHz	1.60 dB	(1)
Radiated spurious emission 9KHz-40 GHz	2.20 dB	(1)
Conducted Emission 9KHz-30MHz	3.39 dB	(1)
Radiated Emission 30~1000MHz	4.24 dB	(1)
Radiated Emission 1~18GHz	5.16 dB	(1)
Radiated Emission 18-40GHz	5.54 dB	(1)
Occupied Bandwidth	-----	(1)

(1) This uncertainty represents an expanded uncertainty expressed at approximately the 95% confidence level using a coverage factor of  $k=1.96$ .

## 5. TEST CONDITIONS AND RESULTS

### 5.1. Antenna requirement

#### Requirement

##### **FCC CFR Title 47 Part 15 Subpart C Section 15.203:**

An intentional radiator shall be designed to ensure that no antenna other than that furnished by the responsible party shall be used with the device. The use of a permanently attached antenna or of an antenna that uses a unique coupling to the intentional radiator, the manufacturer may design the unit so that a broken antenna can be replaced by the user, but the use of a standard antenna jack or electrical connector is prohibited.

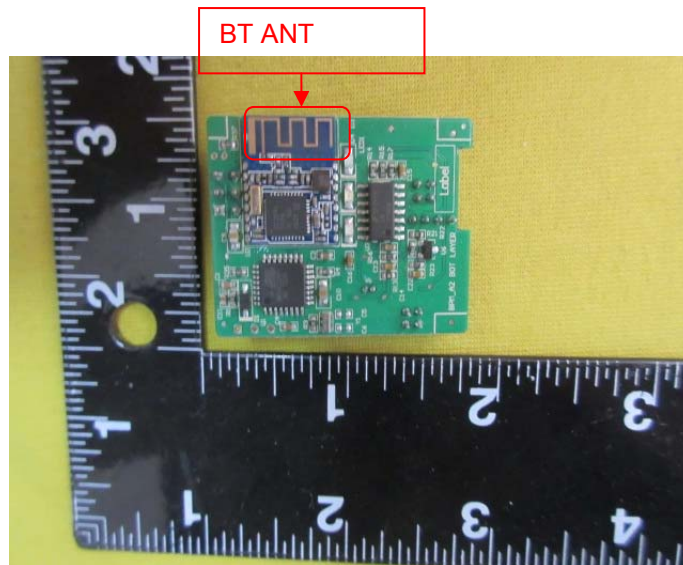
##### **FCC CFR Title 47 Part 15 Subpart C Section 15.247(c) (1)(i):**

(i) Systems operating in the 2400-2483.5 MHz band that is used exclusively for fixed. Point-to-point operations may employ transmitting antennas with directional gain greater than 6dBi provided the maximum conducted output power of the intentional radiator is reduced by 1 dB for every 3 dB that the directional gain of the antenna exceeds 6dBi.

#### TEST RESULTS

☒ **Passed**      ☐ **Not Applicable**

The antenna is integral antenna, the best case gain of the antenna is 0 dBi, please refer to the below antenna photo.



## 5.2. Conducted Emission (AC Main)

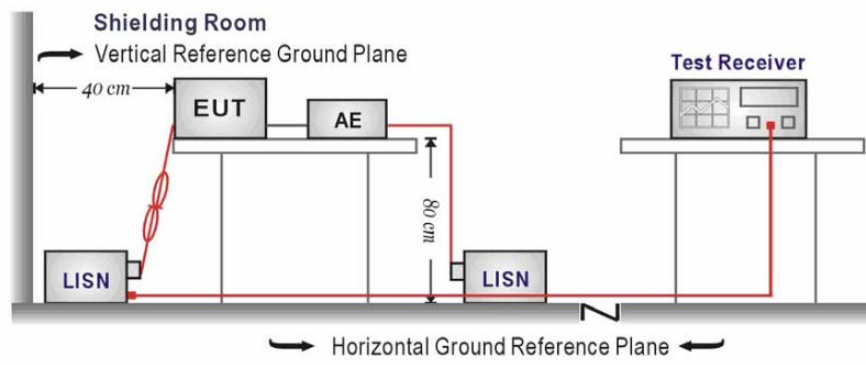
### LIMIT

FCC CFR Title 47 Part 15 Subpart C Section 15.207

Frequency range (MHz)	Limit (dBuV)	
	Quasi-peak	Average
0.15-0.5	66 to 56*	56 to 46*
0.5-5	56	46
5-30	60	50

\* Decreases with the logarithm of the frequency.

### TEST CONFIGURATION



### TEST PROCEDURE

1. The EUT was setup according to ANSI C63.10:2013 for compliance to FCC 47CFR 15.247 requirements.
2. The EUT was placed on a platform of nominal size, 1 m by 1.5 m, raised 80 cm above the conducting ground plane. The vertical conducting plane was located 40 cm to the rear of the EUT. All other surfaces of EUT were at least 80 cm from any other grounded conducting surface.
3. The EUT and simulators are connected to the main power through a line impedance stabilization network (LISN). The LISN provides a 50 ohm /50uH coupling impedance for the measuring equipment.
4. The peripheral devices are also connected to the main power through a LISN. (Please refer to the block diagram of the test setup and photographs)
5. Each current-carrying conductor of the EUT power cord, except the ground (safety) conductor, was individually connected through a LISN to the input power source.
6. The excess length of the power cord between the EUT and the LISN receptacle were folded back and forth at the center of the lead to form a bundle not exceeding 40 cm in length.
7. Conducted emissions were investigated over the frequency range from 0.15MHz to 30MHz using a receiver bandwidth of 9 kHz.
8. During the above scans, the emissions were maximized by cable manipulation.

### TEST MODE:

Please refer to the clause 3.3

### TEST RESULTS

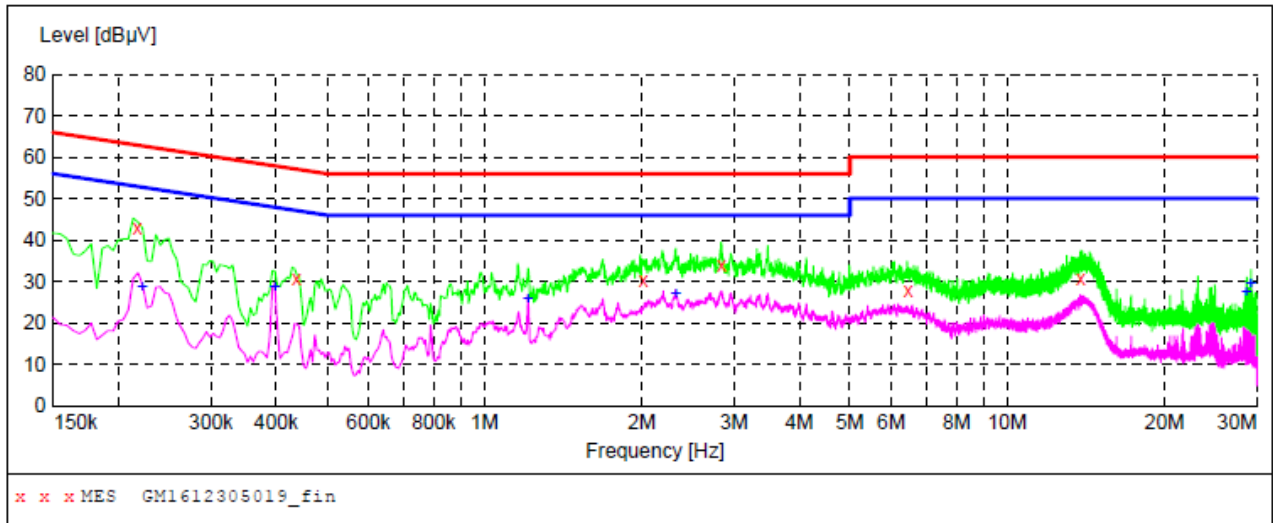
☒ Passed ☐ Not Applicable

Note:

- 1) Transd=Cable lose+ Pulse Limiter Factor + Artificial Mains Factor
- 2) Margin= Limit -Level

Test Line:

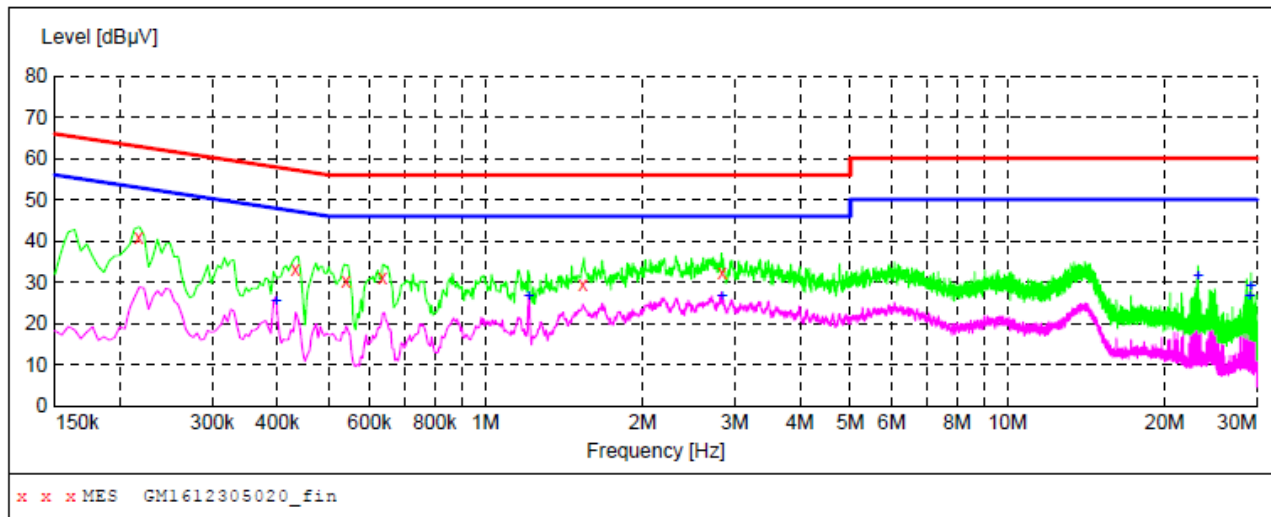
L



Frequency MHz	Level dBμV	Transd dB	Limit dBμV	Margin dB	Detector	Line	PE
0.217500	42.80	10.3	63	20.1	QP	L1	GND
0.438000	30.50	10.2	57	26.6	QP	L1	GND
2.013000	30.40	10.2	56	25.6	QP	L1	GND
2.841000	34.00	10.2	56	22.0	QP	L1	GND
6.472500	27.90	10.3	60	32.1	QP	L1	GND
13.843500	30.80	10.5	60	29.2	QP	L1	GND
Frequency MHz	Level dBμV	Transd dB	Limit dBμV	Margin dB	Detector	Line	PE
0.222000	28.80	10.3	53	23.9	AV	L1	GND
0.397500	28.60	10.2	48	19.3	AV	L1	GND
1.212000	26.00	10.2	46	20.0	AV	L1	GND
2.323500	27.00	10.2	46	19.0	AV	L1	GND
28.689000	27.60	10.8	50	22.4	AV	L1	GND
29.238000	29.60	10.8	50	20.4	AV	L1	GND

Test Line:

N



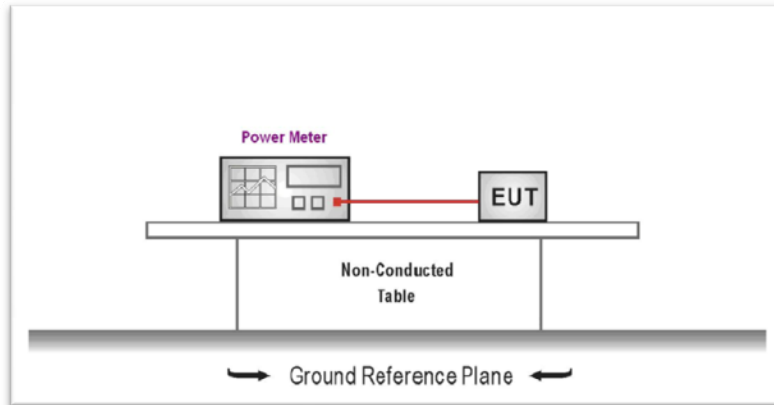
Frequency MHz	Level dBμV	Transd dB	Limit dBμV	Margin dB	Detector	Line	PE
0.217500	41.00	10.3	63	21.9	QP	N	GND
0.433500	33.20	10.2	57	24.0	QP	N	GND
0.541500	30.40	10.2	56	25.6	QP	N	GND
0.636000	31.20	10.2	56	24.8	QP	N	GND
1.540500	29.60	10.2	56	26.4	QP	N	GND
2.841000	32.40	10.2	56	23.6	QP	N	GND
Frequency MHz	Level dBμV	Transd dB	Limit dBμV	Margin dB	Detector	Line	PE
0.397500	25.40	10.2	48	22.5	AV	N	GND
1.212000	26.50	10.2	46	19.5	AV	N	GND
2.836500	26.50	10.2	46	19.5	AV	N	GND
23.131500	31.40	10.7	50	18.6	AV	N	GND
29.116500	26.40	10.8	50	23.6	AV	N	GND
29.238000	29.20	10.8	50	20.8	AV	N	GND

### 5.3. Conducted Peak Output Power

#### LIMIT

FCC CFR Title 47 Part 15 Subpart C Section 15.247 (b)(3): **30dBm**

#### TEST CONFIGURATION



#### TEST PROCEDURE

1. The EUT was tested according to KDB 558074 D01 V03R03 for compliance to FCC 47CFR 15.247 requirements.
2. The maximum peak conducted output power may be measured using a broadband peak RF power meter.
3. The power meter shall have a video bandwidth that is greater than or equal to the DTS bandwidth and shall utilize a fast-responding diode detector
4. Record the measurement data.

#### TEST MODE:

Please refer to the clause 3.3

#### TEST RESULTS

☒ **Passed**      ☐ **Not Applicable**

Type	Channel	Output power (dBm)	Limit (dBm)	Result
BT-BLE	00	-10.87	30.00	Pass
	19	-12.34		
	39	-13.31		

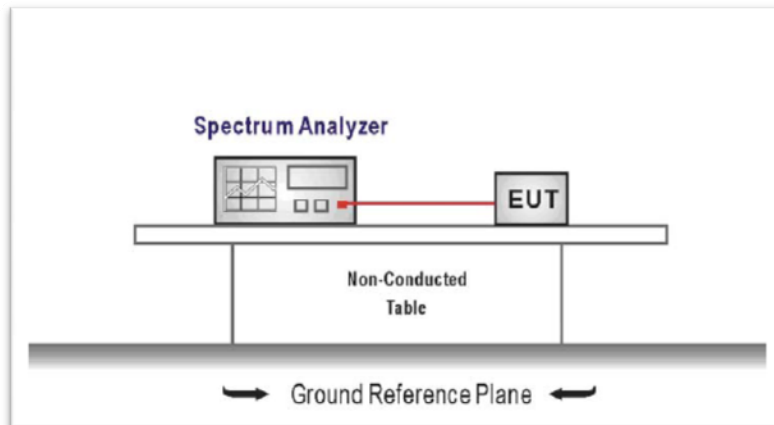
## 5.4. Power Spectral Density

### LIMIT

FCC CFR Title 47 Part 15 Subpart C Section 15.247 (e): **8dBm/3KHz**

*For digitally modulated systems, the power spectral density conducted from the intentional radiator to the antenna shall not be greater than 8 dBm in any 3 kHz band during any time interval of continuous transmission.*

### TEST CONFIGURATION



### TEST PROCEDURE

1. Connect the antenna port(s) to the spectrum analyzer input,
2. Configure the spectrum analyzer as shown below:  
*Center frequency = DTS channel center frequency*  
*Span = 1.5 times the DTS bandwidth*  
*RBW = 3 kHz ≤ RBW ≤ 100 kHz, VBW ≥ 3 × RBW*  
*Sweep time = auto couple*  
*Detector = peak*  
*Trace mode = max hold*
3. Place the radio in continuous transmit mode, allow the trace to stabilize, view the transmitter waveform on the spectrum analyzer.
4. Use the peak marker function to determine the maximum amplitude level within the RBW.
5. If measured value exceeds limit, reduce RBW (no less than 3 kHz) and repeat.

### TEST MODE:

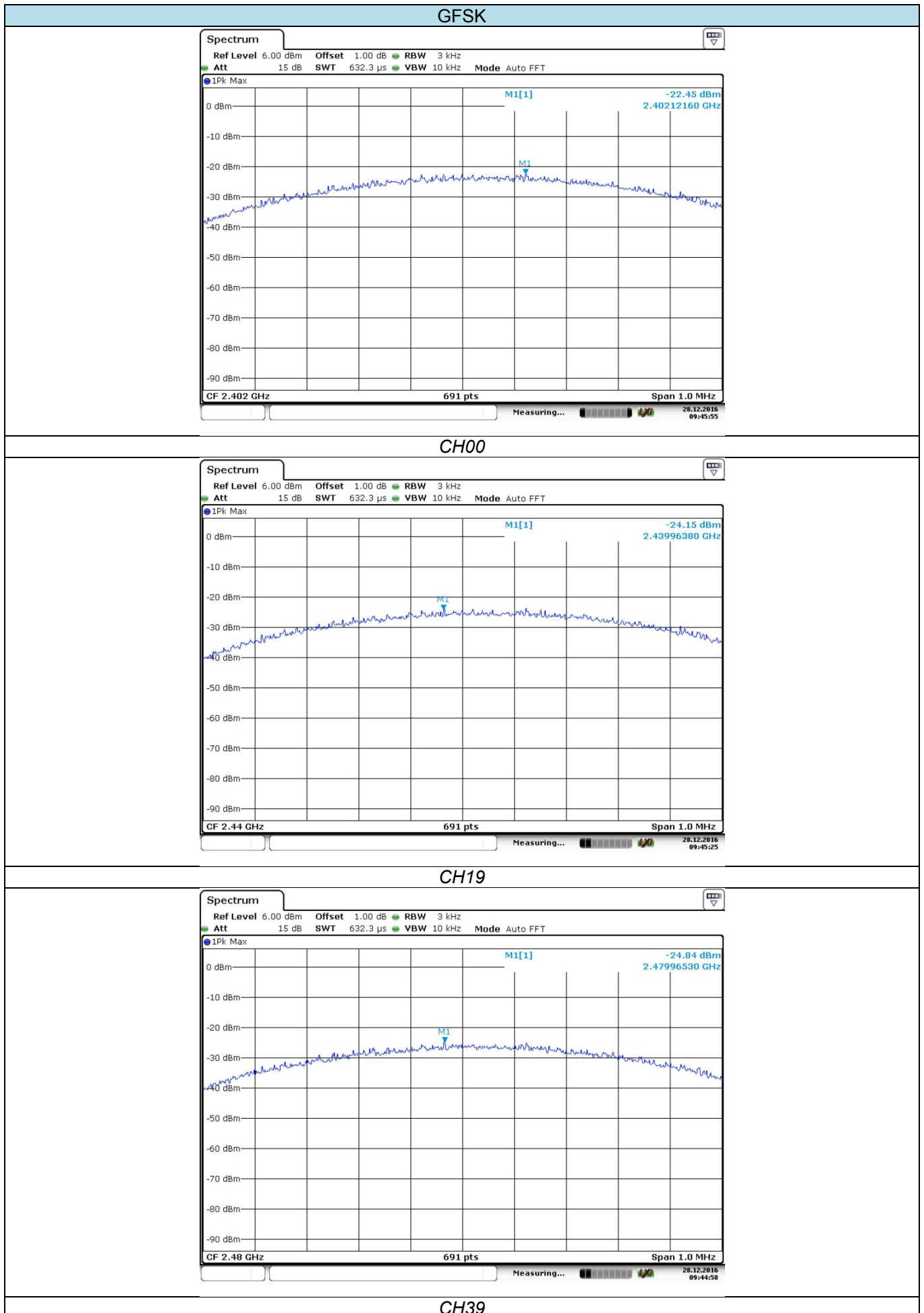
Please refer to the clause 3.3

### TEST RESULTS

☒ **Passed**      ☐ **Not Applicable**

Type	Channel	Power Spectral Density(dBm/3KHz)	Limit (dBm/3KHz)	Result
BT-BLE	00	-22.45	8.00	Pass
	19	-24.15		
	39	-24.84		

Test plot as follows:





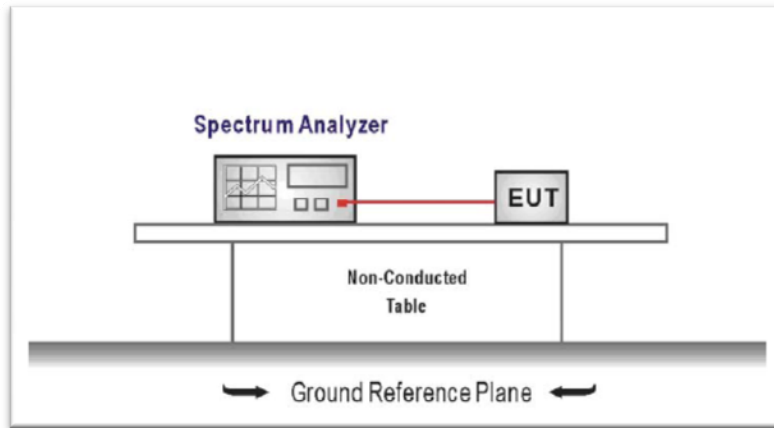
## 5.5. 6dB bandwidth

### LIMIT

FCC CFR Title 47 Part 15 Subpart C Section 15.247 (a)(2):

*For digital modulation systems, the minimum 6 dB bandwidth shall be at least 500 kHz.*

### TEST CONFIGURATION



### TEST PROCEDURE

1. Connect the antenna port(s) to the spectrum analyzer input.
2. Configure the spectrum analyzer as shown below (enter all losses between the transmitter output and the spectrum analyzer).  
 $Center\ Frequency = DTS\ channel\ center\ frequency$   
 $Span = 2 \times DTS\ bandwidth$   
 $RBW = 100\ kHz, VBW \geq 3 \times RBW$   
 $Sweep\ time = auto\ couple$   
 $Detector = Peak$   
 $Trace\ mode = max\ hold$
3. Place the radio in continuous transmit mode, allow the trace to stabilize, view the transmitter waveform on the spectrum analyzer.
4. Measure the maximum width of the emission that is constrained by the frequencies associated with the two outermost amplitude points (upper and lower frequencies) that are attenuated by 6 dB relative to the maximum level measured in the fundamental emission, and record the pertinent measurements.

### TEST MODE:

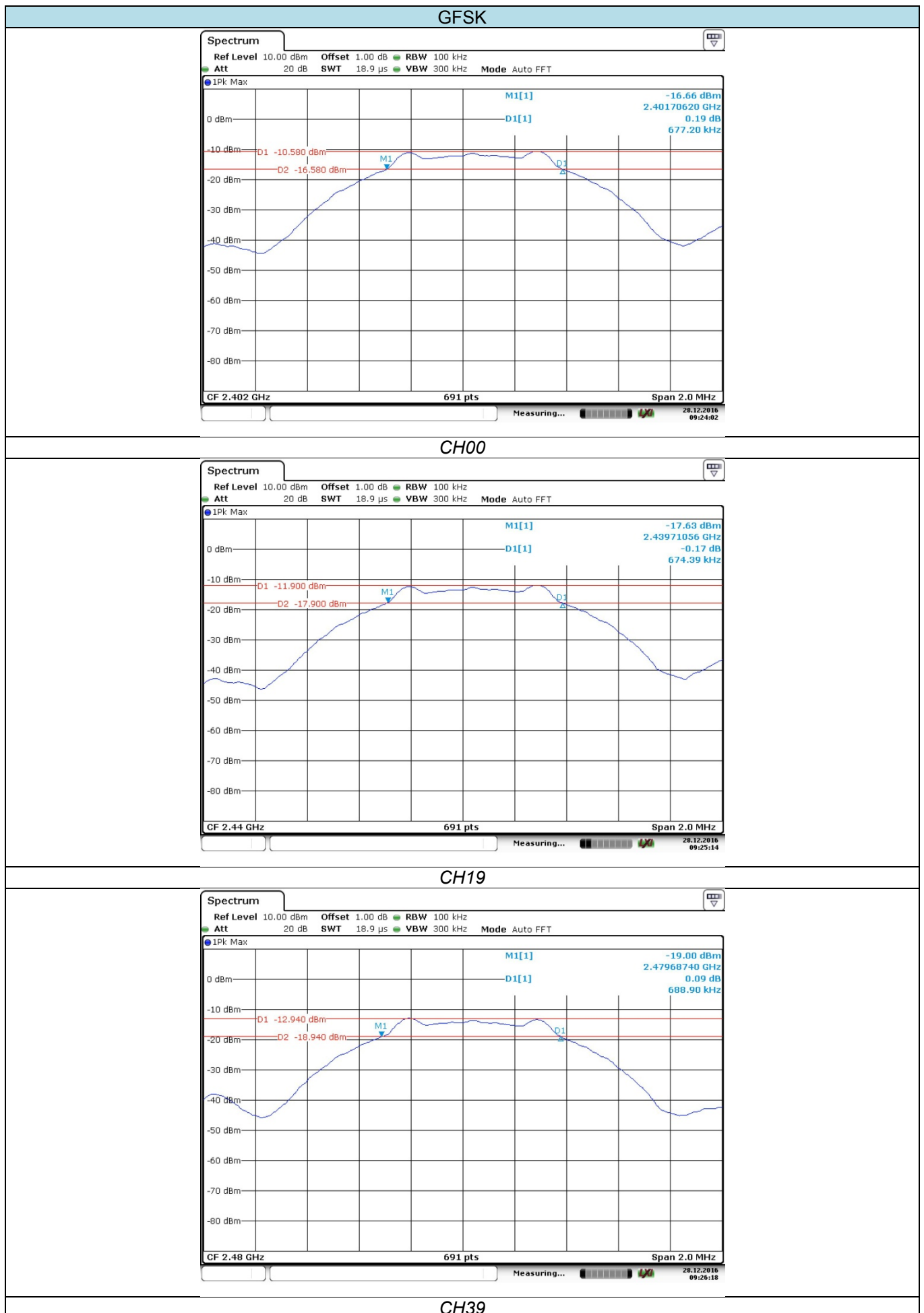
Please refer to the clause 3.3

### TEST RESULTS

☒ Passed ☐ Not Applicable

Type	Channel	6dB Bandwidth(kHz)	Limit (kHz)	Result
BT-BLE	00	677.20	$\geq 500$	Pass
	19	674.39		
	39	688.90		

Test plot as follows:



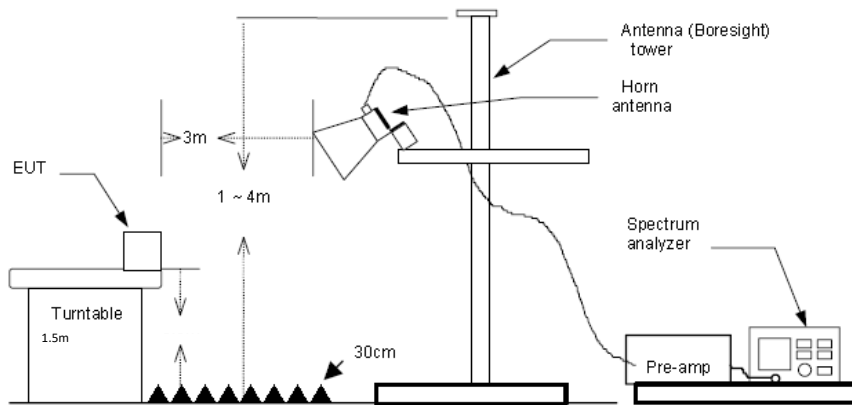
## 5.6. Restricted band

### LIMIT

#### **FCC CFR Title 47 Part 15 Subpart C Section 15.247 (d):**

In any 100 kHz bandwidth outside the frequency band in which the spread spectrum or digitally modulated intentional radiator is operating, radiated emissions which fall in the restricted bands, as defined in §15.205(a), must also comply with the radiated emission limits specified in §15.209(a) (see §15.205(c)).

### TEST CONFIGURATION



### TEST PROCEDURE

1. The EUT was setup and tested according to ANSI C63.10:2013 for compliance to FCC 47CFR 15.247 requirements.
2. The EUT is placed on a turn table which is 1.5 meter above ground. The turn table is rotated 360 degrees to determine the position of the maximum emission level.
3. The EUT was positioned such that the distance from antenna to the EUT was 3 meters.
4. The antenna is scanned from 1 meter to 4 meters to find out the maximum emission level. This is repeated for both horizontal and vertical polarization of the antenna. In order to find the maximum emission, all of the interface cables were manipulated according to ANSI C63.10:2013 on radiated measurement.
5. The receiver set as follow: Peak detector is used  
RBW=1MHz, VBW=3MHz for Peak value  
RBW=1MHz, VBW=10Hz for Average value.

### TEST MODE:

Please refer to the clause 3.3

### TEST RESULTS

☒ **Passed**      ☐ **Not Applicable**

Note:

1) *Final level= Read level + Antenna Factor+ Cable Loss- Preamp Factor*

BT-BLE					CH00				
Frequency (MHz)	Read Level (dBuV)	Antenna Factor (dB/m)	Cable Loss (dB)	Preamplifier Factor (dB)	Level (dBuV/m)	Limit Line (dBuV/m)	Margin Limit (dB)	Polarization	Test value
2310.00	34.71	27.27	6.62	37.65	30.95	74.00	-43.05	Vertical	Peak
2390.03	37.24	27.53	6.75	37.87	33.65	74.00	-40.35	Vertical	
2310.00	34.61	27.27	6.62	37.65	30.85	74.00	-43.15	Horizontal	
2390.03	35.27	27.53	6.75	37.87	31.68	74.00	-42.32	Horizontal	
2310.00	29.30	27.27	6.62	37.65	25.54	54.00	-28.46	Vertical	Average
2390.03	32.30	27.53	6.75	37.87	28.71	54.00	-25.29	Vertical	
2310.00	27.87	27.27	6.62	37.65	24.11	54.00	-29.89	Horizontal	
2390.03	28.55	27.53	6.75	37.87	24.96	54.00	-29.04	Horizontal	

BT-BLE					CH39				
Frequency (MHz)	Read Level (dBuV)	Antenna Factor (dB/m)	Cable Loss (dB)	Preamplifier Factor (dB)	Level (dBuV/m)	Limit Line (dBuV/m)	Margin Limit (dB)	Polarization	Test value
2483.50	42.92	27.85	6.83	37.87	39.73	74.00	-34.27	Vertical	Peak
2500.00	35.43	27.90	6.84	37.87	32.30	74.00	-41.70	Vertical	
2483.50	51.01	27.85	6.83	37.87	47.82	74.00	-26.18	Horizontal	
2500.00	34.94	27.90	6.84	37.87	31.81	74.00	-42.19	Horizontal	
2483.50	37.84	27.85	6.83	37.87	34.65	54.00	-19.35	Vertical	Average
2500.00	27.86	27.90	6.84	37.87	24.73	54.00	-29.27	Vertical	
2483.50	46.99	27.85	6.83	37.87	43.80	54.00	-10.20	Horizontal	
2500.00	26.46	27.90	6.84	37.87	23.33	54.00	-30.67	Horizontal	

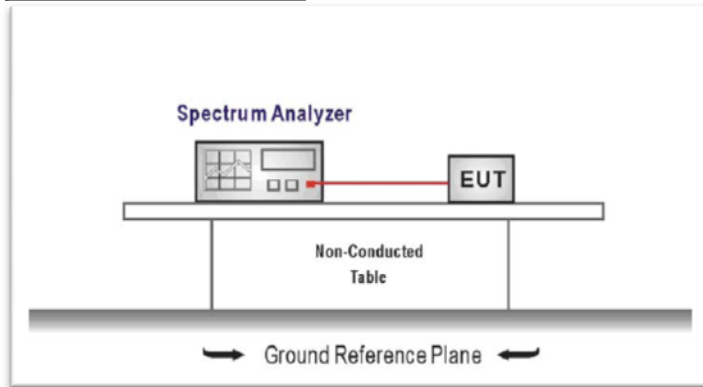
## 5.7. Band edge and Spurious Emission (conducted)

### LIMIT

#### **FCC CFR Title 47 Part 15 Subpart C Section 15.247 (d):**

In any 100 kHz bandwidth outside the frequency band in which the spread spectrum intentional radiator is operating, the radio frequency power that is produced by the intentional radiator shall be at least 20 dB below that in the 100 kHz bandwidth within the band that contains the highest level of the desired power, based on either an RF conducted or a radiated measurement.

### TEST CONFIGURATION



### TEST PROCEDURE

1. Connect the antenna port(s) to the spectrum analyzer input.
2. Establish a reference level by using the following procedure  
*Center frequency=DTS channel center frequency*  
*The span = 1.5 times the DTS bandwidth.*  
*RBW = 100 kHz, VBW ≥ 3 x RBW*  
*Detector = peak, Sweep time = auto couple, Trace mode = max hold*  
*Allow trace to fully stabilize*  
*Use the peak marker function to determine the maximum PSD level*

Note that the channel found to contain the maximum PSD level can be used to establish the reference level.

3. Emission level measurement  
Set the center frequency and span to encompass frequency range to be measured  
*RBW = 100 kHz, VBW ≥ 3 x RBW*  
*Detector = peak, Sweep time = auto couple, Trace mode = max hold*  
*Allow trace to fully stabilize*  
*Use the peak marker function to determine the maximum amplitude level.*
4. Place the radio in continuous transmit mode, allow the trace to stabilize, view the transmitter waveform on the spectrum analyzer.
5. Ensure that the amplitude of all unwanted emissions outside of the authorized frequency band excluding restricted frequency bands) are attenuated by at least the minimum requirements specified (at least 20 dB relative to the maximum in-band peak PSD level in 100 kHz). Report the three highest emissions relative to the limit.

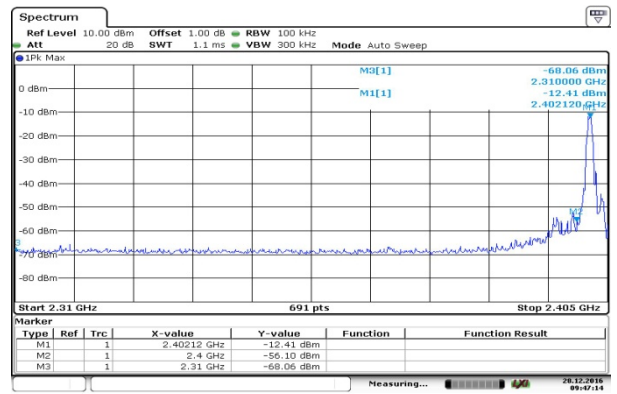
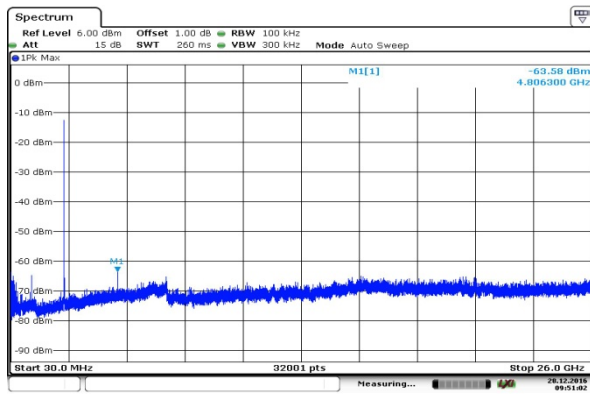
### TEST MODE:

Please refer to the clause 3.3

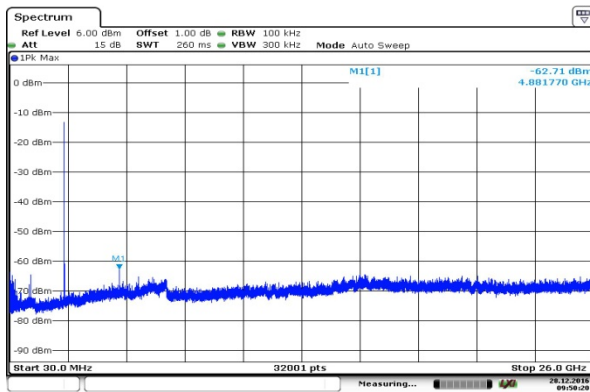
### TEST RESULTS

☒ **Passed**      ☐ **Not Applicable**

## BT-BLE



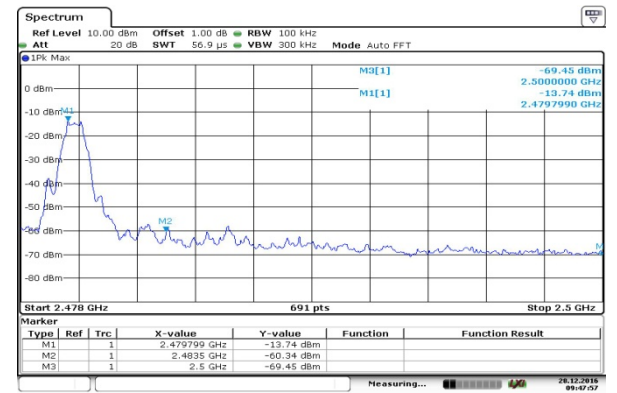
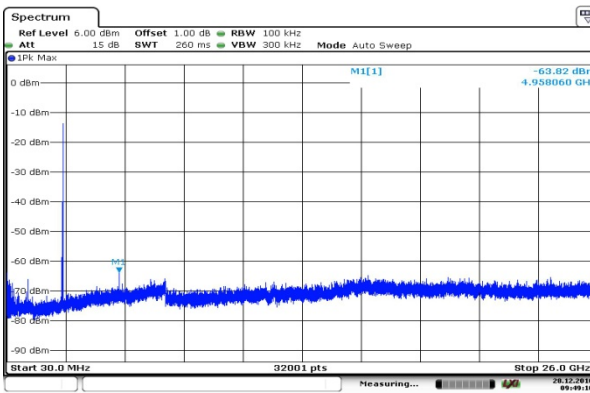
## CH00-SE



## CH00-Bandedge

No Plot

## CH19-SE



## CH39-SE

## CH39-Bandedge

## 5.8. Spurious Emission (radiated)

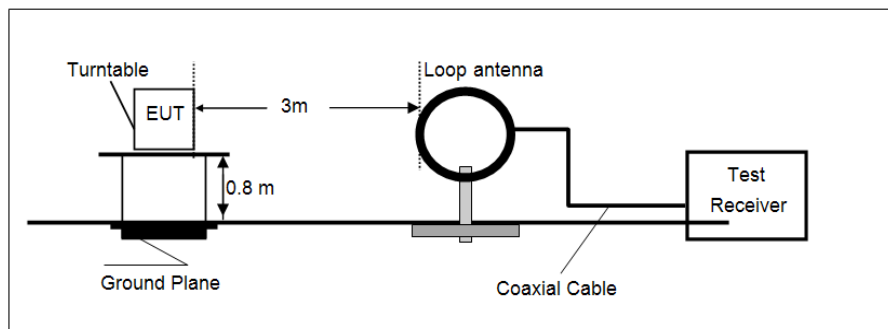
### LIMIT

#### FCC CFR Title 47 Part 15 Subpart C Section 15.209

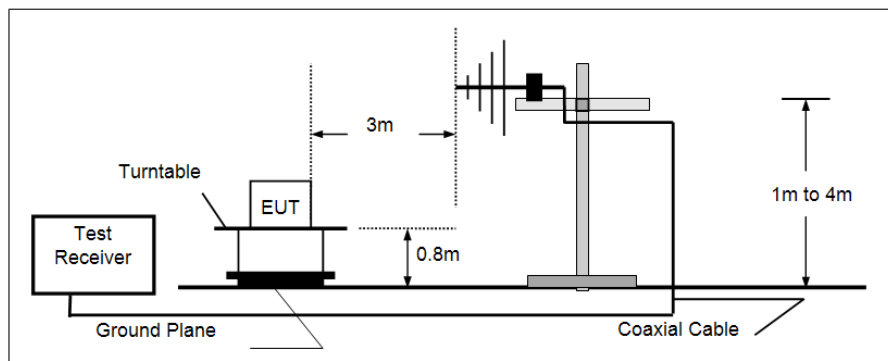
Frequency	Limit (dBuV/m @3m)	Value
30MHz-88MHz	40.00	Quasi-peak
88MHz-216MHz	43.50	Quasi-peak
216MHz-960MHz	46.00	Quasi-peak
960MHz-1GHz	54.00	Quasi-peak
Above 1GHz	54.00	Average
	74.00	Peak

### TEST CONFIGURATION

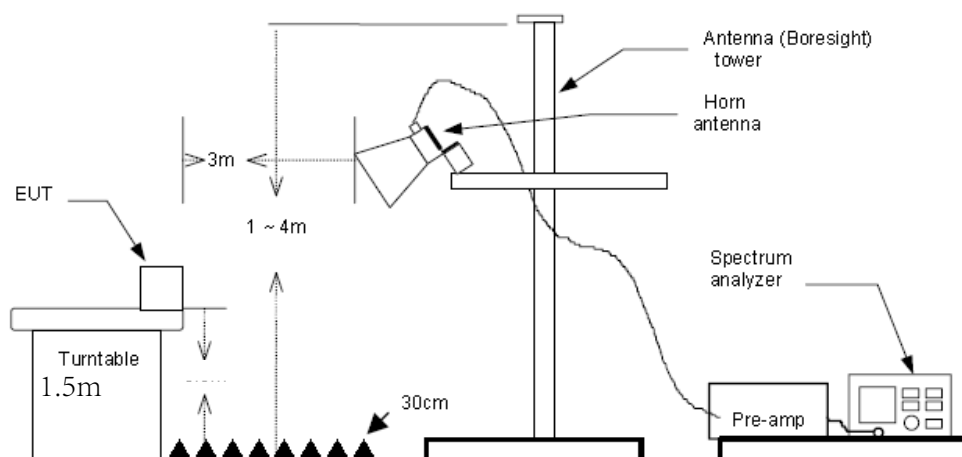
- 9KHz ~30MHz



- 30MHz ~ 1GHz



- Above 1GHz



### TEST PROCEDURE

1. The EUT was setup and tested according to ANSI C63.10:2013 for compliance to FCC 47CFR 15.247 requirements.
2. The EUT is placed on a turn table which is 0.8 meter above ground for below 1GHz, and 1.5m for above 1GHz. The turn table is rotated 360 degrees to determine the position of the maximum emission level.
3. The EUT was positioned such that the distance from antenna to the EUT was 3 meters.
4. The antenna is scanned from 1 meter to 4 meters to find out the maximum emission level. This is repeated for both horizontal and vertical polarization of the antenna. In order to find the maximum emission, all of the interface cables were manipulated according to ANSI C63.10:2013 on radiated measurement.
5. Use the following spectrum analyzer settings
  - (1) Span shall wide enough to fully capture the emission being measured;
  - (2) Below 1GHz, RBW=120KHz, VBW=300KHz, Sweep=auto, Detector function=Qp, Trace=max hold;  
*If the emission level of the EUT measured by the peak detector is 3 dB lower than the applicable limit, the peak emission level will be reported. Otherwise, the emission measurement will be repeated using the quasi-peak detector and reported.*
  - (3) Above 1GHz, RBW=1MHz, VBW=3MHz for Peak value  
RBW=1MHz, VBW=10Hz for Average value. PK detector is used.

### TEST MODE:

Please refer to the clause 3.3

### TEST RESULTS

☒ **Passed**      ☐ **Not Applicable**

Note:

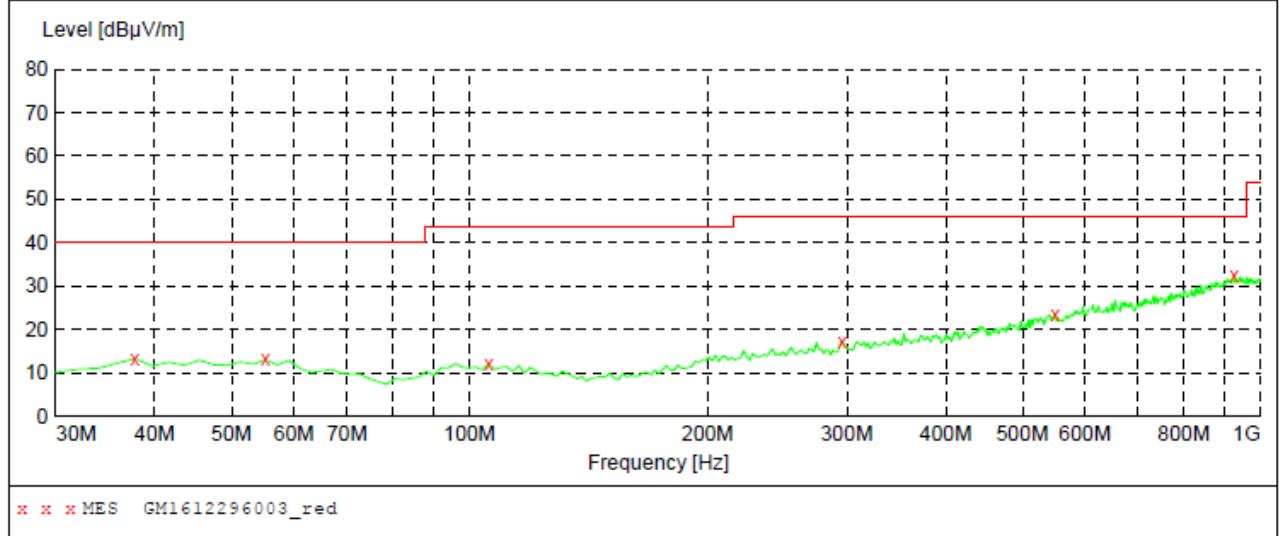
- 1) *Above 1GHz Final Level = Receiver Read level + Antenna Factor + Cable Loss – Preamplifier Factor*
  - 2) *The emission levels of other frequencies are very lower than the limit and not show in test report.*
- **9kHz ~ 30MHz**  
The EUT was pre-scanned the frequency band (9KHz~30MHz), found the radiated level lower than the limit, so don't show on the report.
- **30MHz ~1000MHz**  
*Have pre-scan all modulation mode, found the BT-BLE mode CH00 which it was worst case, so only the worst case's data on the test report.*



## ➤ 30MHz ~ 1GHz

Polarization:

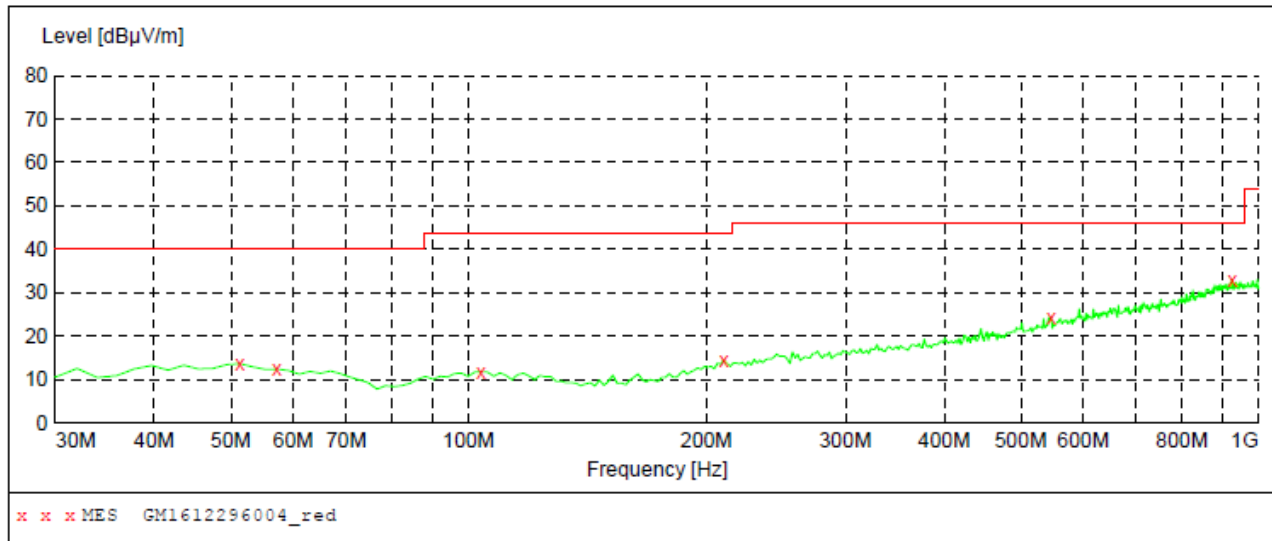
Vertical



Frequency MHz	Level dBμV/m	Transd dB	Limit dBμV/m	Margin dB	Det.	Height cm	Azimuth deg	Polarization
37.760000	13.20	-17.3	40.0	26.8	QP	100.0	91.00	VERTICAL
55.220000	13.00	-16.7	40.0	27.0	QP	100.0	151.00	VERTICAL
105.660000	12.00	-17.6	43.5	31.5	QP	100.0	46.00	VERTICAL
295.780000	17.20	-13.1	46.0	28.8	QP	100.0	270.00	VERTICAL
549.920000	23.30	-6.2	46.0	22.7	QP	100.0	315.00	VERTICAL
926.280000	32.30	1.4	46.0	13.7	QP	100.0	25.00	VERTICAL

Polarization:

Horizontal



Frequency MHz	Level dBμV/m	Transd dB	Limit dBμV/m	Margin dB	Det.	Height cm	Azimuth deg	Polarization
51.340000	13.60	-16.3	40.0	26.4	QP	100.0	0.00	HORIZONTAL
57.160000	12.30	-16.9	40.0	27.7	QP	300.0	204.00	HORIZONTAL
103.720000	11.70	-17.5	43.5	31.8	QP	100.0	0.00	HORIZONTAL
210.420000	14.40	-15.6	43.5	29.1	QP	300.0	169.00	HORIZONTAL
546.040000	24.30	-6.3	46.0	21.7	QP	300.0	275.00	HORIZONTAL
926.280000	33.00	1.4	46.0	13.0	QP	300.0	147.00	HORIZONTAL

## ➤ Above 1 GHz

BT-BLE					CH00				
Frequency (MHz)	Read Level (dBuV)	Antenna Factor (dB/m)	Cable Loss (dB)	Preamplifier Factor (dB)	Level (dBuV/m)	Limit Line (dBuV/m)	Margin Limit (dB)	Polarization	Test value
1585.25	51.61	24.97	5.53	36.70	45.41	74.00	-28.59	Vertical	Peak
3192.37	38.98	28.58	7.71	38.20	37.07	74.00	-36.93	Vertical	
4809.50	42.57	31.09	9.55	36.93	46.28	74.00	-27.72	Vertical	
7209.02	31.55	35.97	11.87	35.07	44.32	74.00	-29.68	Vertical	
1402.92	41.76	24.62	5.01	36.46	34.93	74.00	-39.07	Horizontal	
3873.75	35.64	29.31	8.60	38.19	35.36	74.00	-38.64	Horizontal	
4809.50	45.34	31.09	9.55	36.93	49.05	74.00	-24.95	Horizontal	
7209.02	33.94	35.97	11.87	35.07	46.71	74.00	-27.29	Horizontal	

BT-BLE					CH19				
Frequency (MHz)	Read Level (dBuV)	Antenna Factor (dB/m)	Cable Loss (dB)	Preamplifier Factor (dB)	Level (dBuV/m)	Limit Line (dBuV/m)	Margin Limit (dB)	Polarization	Test value
1353.80	42.21	24.58	4.92	36.49	35.22	74.00	-38.78	Vertical	Peak
3143.98	37.36	28.56	7.65	38.21	35.36	74.00	-38.64	Vertical	
4883.52	40.80	31.14	9.59	36.73	44.80	74.00	-29.20	Vertical	
7319.96	33.14	36.07	11.99	34.92	46.28	74.00	-27.72	Vertical	
1597.40	42.43	25.01	5.56	36.72	36.28	74.00	-37.72	Horizontal	
3176.16	36.75	28.58	7.69	38.20	34.82	74.00	-39.18	Horizontal	
4883.52	41.15	31.14	9.59	36.73	45.15	74.00	-28.85	Horizontal	
7319.96	32.71	36.07	11.99	34.92	45.85	74.00	-28.15	Horizontal	

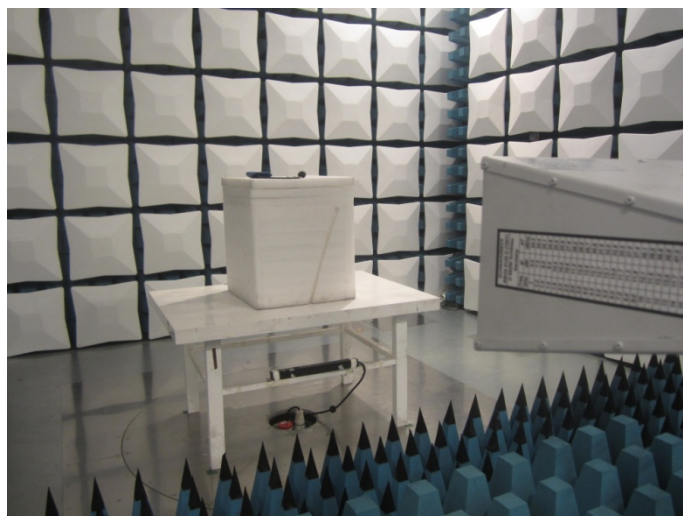
BT-BLE					CH39				
Frequency (MHz)	Read Level (dBuV)	Antenna Factor (dB/m)	Cable Loss (dB)	Preamplifier Factor (dB)	Level (dBuV/m)	Limit Line (dBuV/m)	Margin Limit (dB)	Polarization	Test value
1593.34	49.56	24.99	5.55	36.71	43.39	74.00	-30.61	Vertical	Peak
3192.37	38.67	28.58	7.71	38.20	36.76	74.00	-37.24	Vertical	
4958.68	38.11	31.18	9.64	36.52	42.41	74.00	-31.59	Vertical	
7432.62	31.28	36.15	12.18	34.85	44.76	74.00	-29.24	Vertical	
1597.40	39.71	25.01	5.56	36.72	33.56	74.00	-40.44	Horizontal	
3844.28	35.37	29.26	8.56	38.20	34.99	74.00	-39.01	Horizontal	
4958.68	42.00	31.18	9.64	36.52	46.30	74.00	-27.70	Horizontal	
7432.62	31.43	36.15	12.18	34.85	44.91	74.00	-29.09	Horizontal	

## Remark:

1. Final Level = Receiver Read level + Antenna Factor + Cable Loss – Preamplifier Factor
2. The peak level is lower than average limit (54 dBuV/m), this data is the too weak instrument of signal is unable to test.
3. The emission levels of other frequencies are very lower than the limit and not show in test report.

## 6. Test Setup Photos of the EUT

Radiated Emission

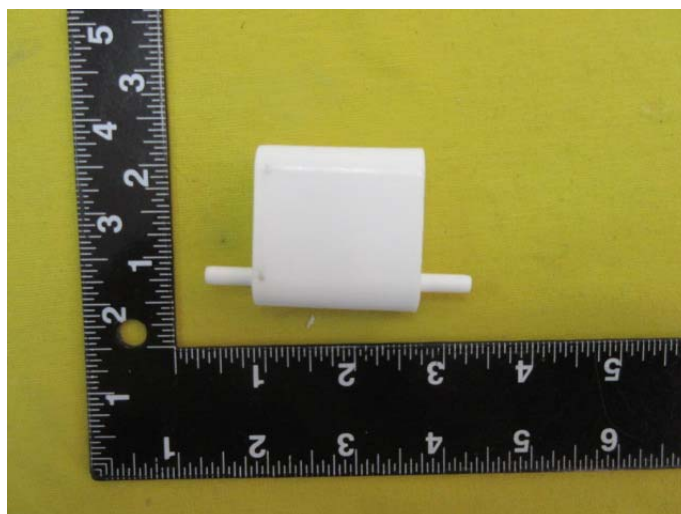
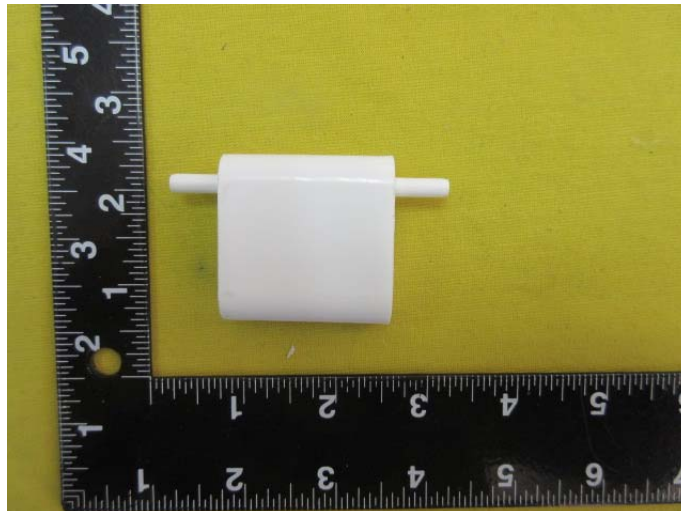


Conducted Emission (AC Mains)

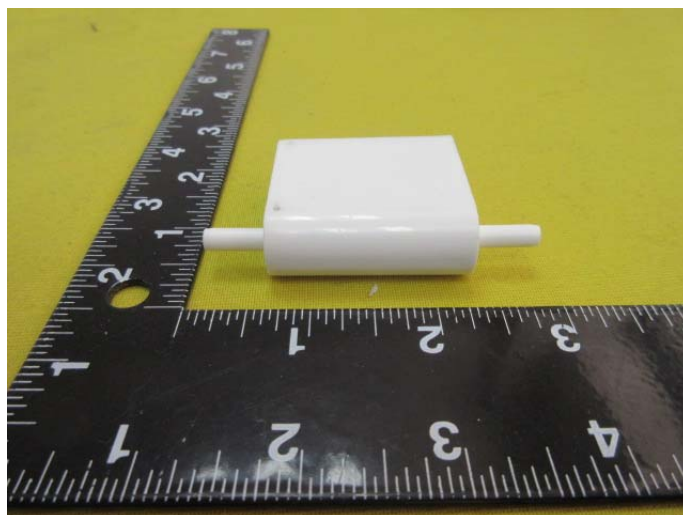
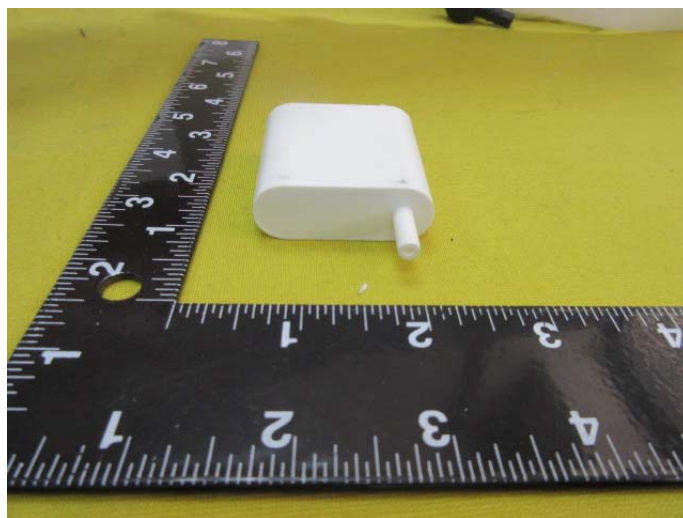
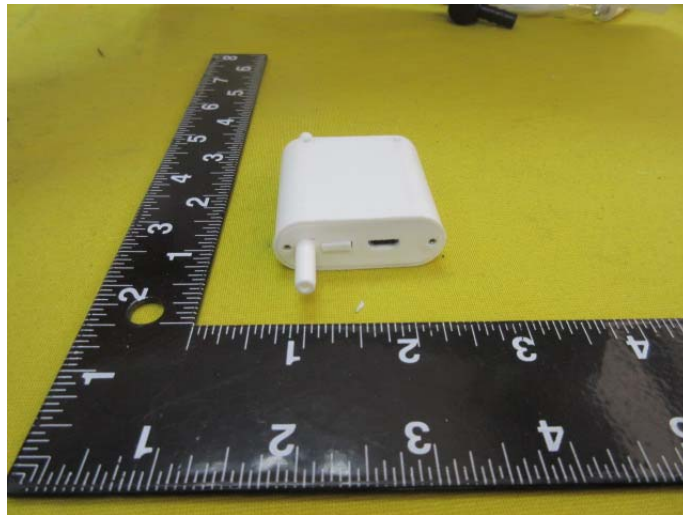


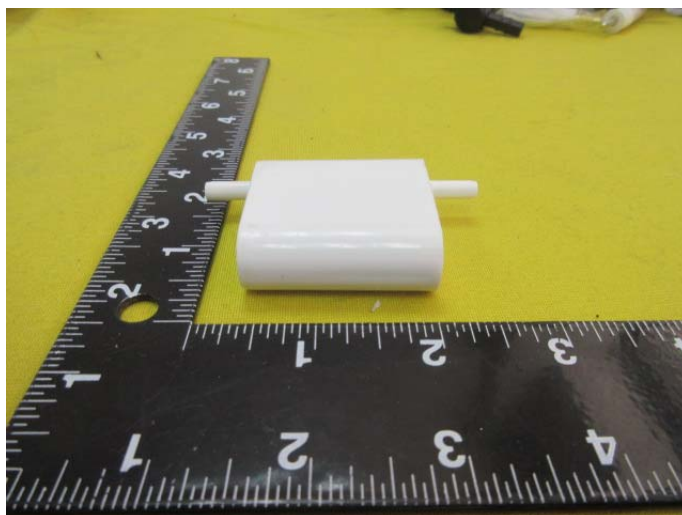
## 7. External and Internal Photos of the EUT

### External photos



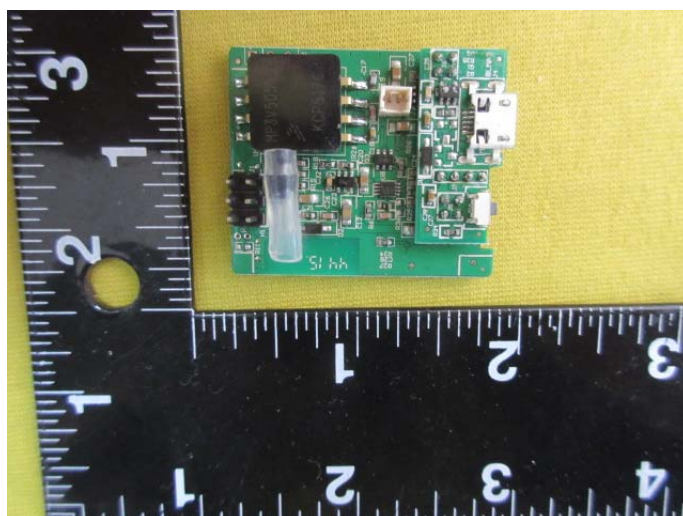
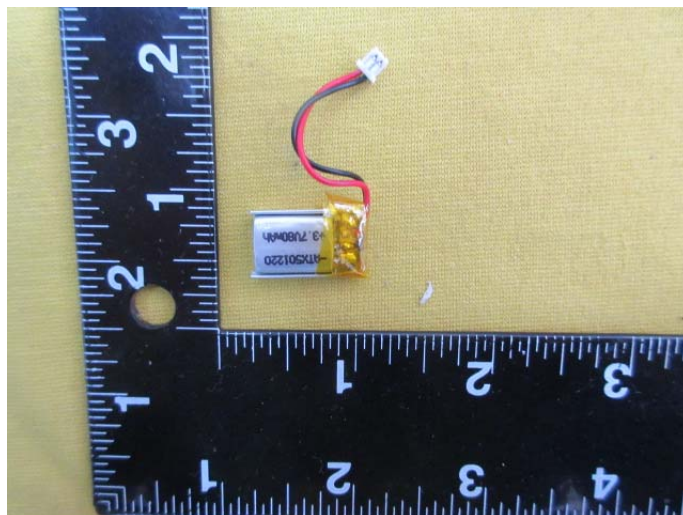
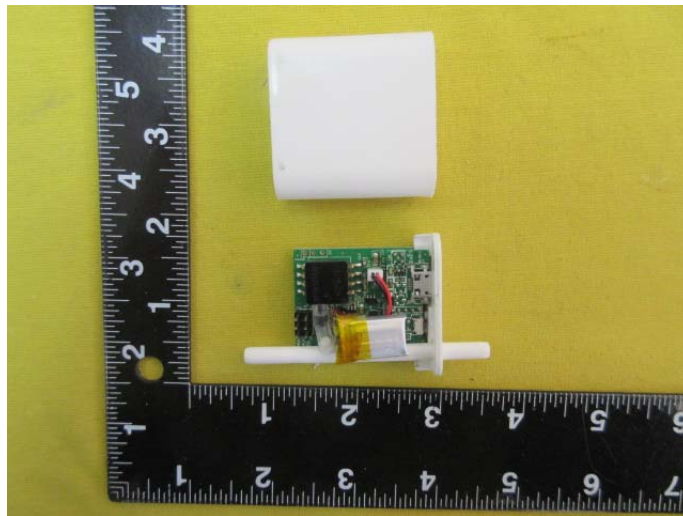


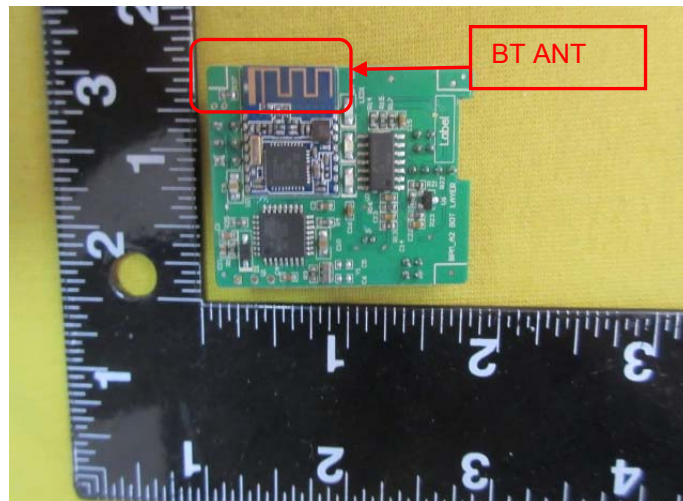






### **Internal photos**





.....*End of Report*.....