

## APPENDIX F: DUT ANTENNA DIAGRAM & SAR TEST SETUP PHOTOGRAPHS

## DUT Antenna Location

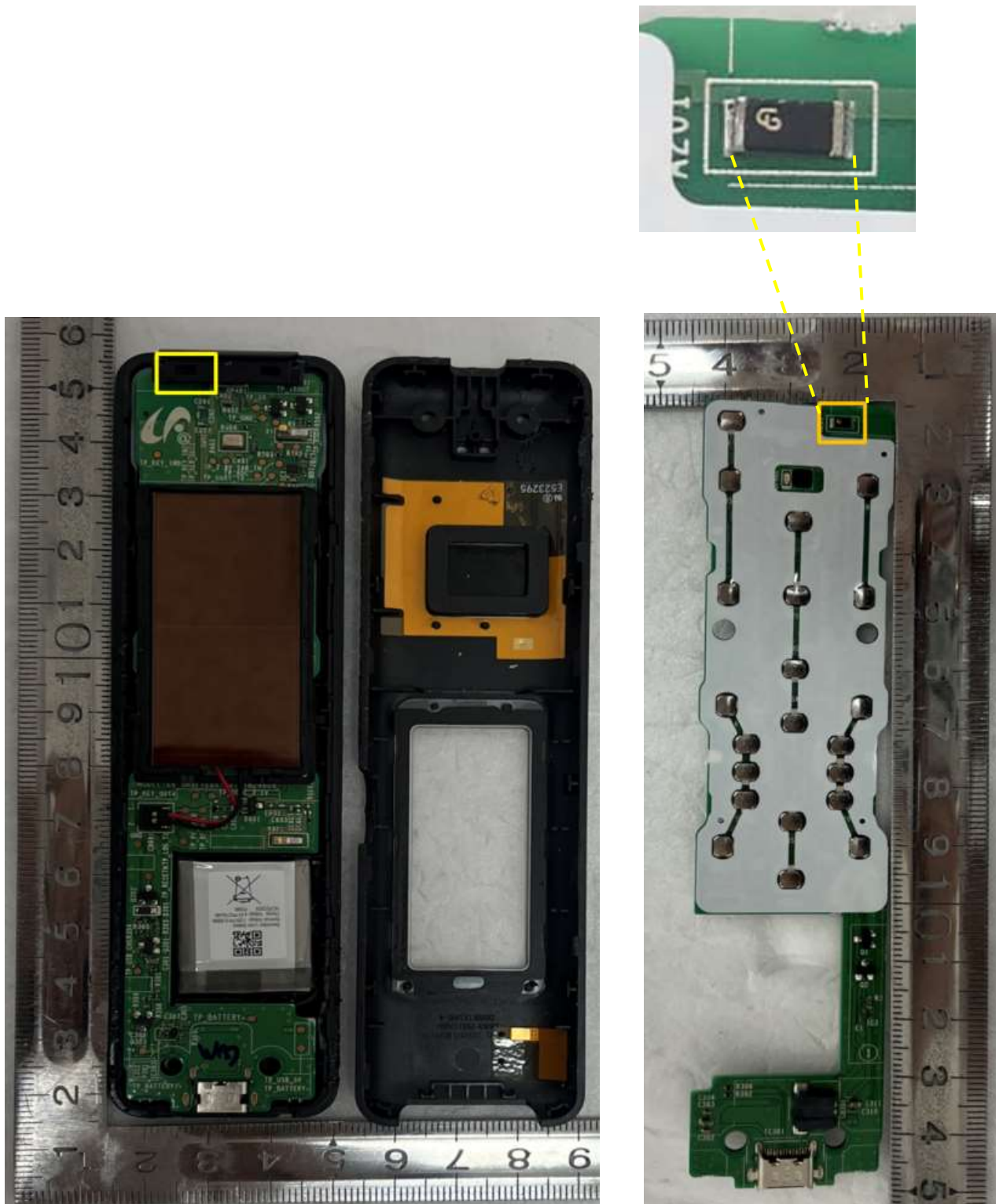


Figure F-1 Antenna Location

This Report is not correlated with the authentication of KOLAS.

It should not be reproduced except in full, without the written approval of ONETECH Corp.

OTC-TRF-SAR-002(0)

ONETECH Corp.: 43-14, Jinsaegol-gil, Chowol-eup, Gwangju-si, Gyeonggi-do, 12735, Korea (TEL: 82-31-799-9500, FAX: 82-31-799-9599)

**SAR Test Setup Photographs**



**Front from SAM(Flat) Phantom (Separation Distance: 0 cm)**



**Rear from SAM(Flat) Phantom (Separation Distance: 0 cm)**

This Report is not correlated with the authentication of KOLAS.

It should not be reproduced except in full, without the written approval of ONETECH Corp.

OTC-TRF-SAR-002(0)

**ONETECH Corp.:** 43-14, Jinsaegol-gil, Chowol-eup, Gwangju-si, Gyeonggi-do, 12735, Korea (TEL: 82-31-799-9500, FAX: 82-31-799-9599)



Left from SAM(Flat) Phantom (Separation Distance: 0 cm)



Right from SAM(Flat) Phantom (Separation Distance: 0 cm)



Top from SAM(Flat) Phantom (Separation Distance: 0 cm)



Bottom from SAM(Flat) Phantom (Separation Distance: 0 cm)