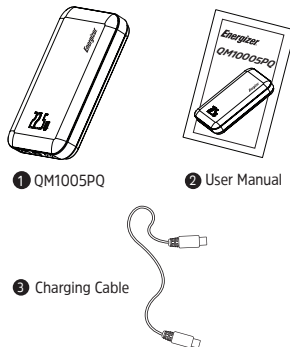


EN

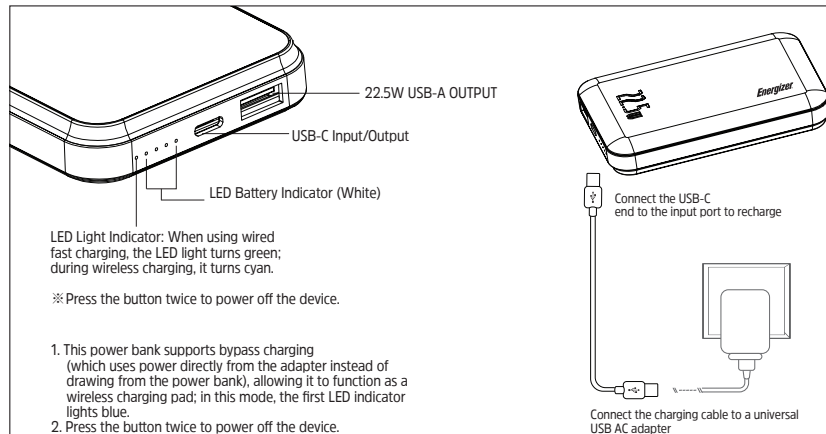
Specification:

Model Name : QM10005PQ
 Cell Type : Lithium Polymer
 Battery Capacity : 10000mAh/38.5Wh(Max.)
 Rated Capacity : 5V/6000mAh
 Rated Input : USB-C PD 5V \equiv 3A, 9V \equiv 2A, 12V \equiv 1.5A
 Rated Output 1 : USB-A 4.5V \equiv 5A, 5V \equiv 4.5A, 9V \equiv 2A, 12V \equiv 1.5A
 Rated Output 2: USB-C PD 5V \equiv 3A, 9V \equiv 2.22A, 12V \equiv 1.66A
 Wireless Output : 5W/7.5W/10W/15W
 Total Output : 22.5W(Max.)
 Dimension :108.9*69.2*16.7mm
 Weight : 188g \pm 10g
 Made In China

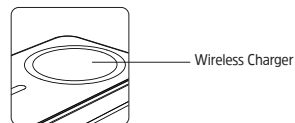
Package Contents



How to Recharge



1. This power bank supports bypass charging (which uses power directly from the adapter instead of drawing from the power bank), allowing it to function as a wireless charging pad; in this mode, the first LED indicator lights blue.
2. Press the button twice to power off the device.

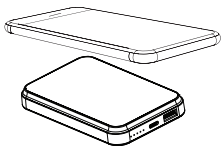


How to Pick the Right Case

Please use compatible magnetic case for optimal results. iPhone 11/X/8/SE series can charge wirelessly with a magnetic case that's compatible with the charging stand.

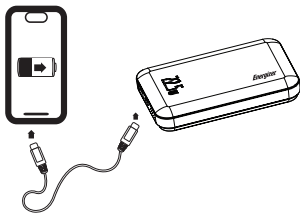
Adapter NOT included

How to USE



Place the power bank to the back of your smartphone, it will attach magnetically and align automatically.

*For iPhone 12 series and above.



FOD Alert:
If the blue LED flashes continuously, please immediately disconnect your phone from the power bank.

Wireless Charging with USB-C Ports:

- Disconnect USB-C to let wireless fast charging resume in about 3 seconds.
- Disconnect wireless charging to resume USB-C fast output in about 40 seconds.

Wireless Charging with USB-A Ports:

- Disconnect USB-A to let wireless fast charging resume in about 18 seconds.
- Disconnect wireless charging to resume USB-A fast output in about 36 seconds.

Warning:

Changes or modifications to this unit not expressly approved by the party responsible for compliance could void the user's authority to operate the equipment.

NOTE:

This device complies with part 15 of the FCC Rules. Operation is subject to the following two conditions:

- (1) This device may not cause harmful interference, and
- (2) This device must accept any interference received, including interference that may cause undesired operation.

FCC Warning Statement:

This equipment has been tested and found to comply with the limits for a Class B digital device, pursuant to part 15 of the FCC Rules. These limits are designed to provide reasonable protection against harmful interference in a residential installation. This equipment generates, uses and can radiate radio frequency energy and, if not installed and used in accordance with the instructions, may cause harmful interference to radio communications. However, there is no guarantee that interference will not occur in a particular installation. If this equipment does cause harmful interference to radio or television reception, which can be determined by turning the equipment off and on, the user is encouraged to try to correct the interference by one or more of the following measures:

- Reorient or relocate the receiving antenna.
- Increase the separation between the equipment and receiver.
- Connect the equipment into an outlet on a circuit different from that to which the receiver is connected.
- Connect the equipment into an outlet on a circuit different from that to which the receiver is connected.
- Consult the dealer or an experienced radio/TV technician for help.

NOTE : This device complies with part 15 of the FCC Rules. Information to the user.

1. The device has potential interference, but the interference is very small and meets the requirements of the FCC rule
2. Equipment system maintenance is simple, please refer to the manual.
3. The user can take simple measures to correct the interference. Such as staying away from interference sources, turning off interference sources, etc.

RF exposure compliance statement:

The device has been evaluated to meet general RF exposure requirement. The device can be used in portable exposure condition without restriction.

Safety Instruction

- Avoid water, heat, fire, penetration of the battery, and severe drops at all times.
- Do not insert other objects into the USB ports other than the USB connectors.
- Once the product is fully charged, your power pack automatically shuts off to save power.
- During charge & recharge, battery may feel slightly warm.
- Do not clean the battery with water or other cleaning products, clean the exterior with a lightly wetted cloth or napkin.
- Normally the battery performance will decline after 2 years
- Any intentional and physical damage to the battery will not be under the warranty conditions.
- Battery storage temperature is between -10°C~+60°C, operating temperature is 0°C~45°C.
- Fully charge the battery before first use to maximize the battery life.



PowerSafe Management

Guarantees against short circuit and over-charging for your power bank and device.



Customer Service

For any question about the product, please contact us at service@energizerpowerpacks.com



FCC-ID : 2AU4P-QM10005PQ



WARRANTY

All products from the date of purchase are qualified. For more warranty information, please visit: <http://www.energizerpowerpacks.com>

Dispose the battery properly, seek for local disposal facility for advice. Do not dispose, disassemble, damage, or incinerate the battery at all time.

©2025 Energizer. Energizer, Energizer Character and certain graphic designs are trademarks of Energizer Brands, LLC and related subsidiaries and are used under license by TennRich International Corp..