

Go to www.vtechphones.com to register your product for enhanced warranty support and latest Vtech product news.



vtech®

Quick start guide

For more support information:



VM901
VM901-2

Wi-Fi 1080p

Pan & Tilt Video Monitor

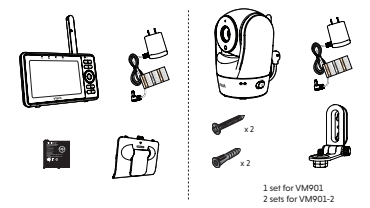
Congratulations

on purchasing your new Vtech product. Before using this HD video monitor, please read **Important safety instructions**.
For shopping, shipping, and everything new at Vtech, visit our website at www.vtechphones.com. In Canada, visit www.vtechcanada.com.



WHAT'S IN THE BOX

Your HD video monitor package contains the following items. Save your sales receipt and original packaging in the event warranty service is necessary.



Requirements

For mobile access:

MyVtech Baby 1080p app	Wi-Fi
Network	2.4GHz 802.11 b/g/n
Wi-Fi router	1.5 Mbps @ 720p or 2.5 Mbps @1080p upload bandwidth per baby unit
Internet connection	



PROTECT YOUR PRIVACY AND ONLINE SECURITY

Vtech cares about your privacy and peace of mind. That's why we've put together a list of industry-recommended best practices to help keep your wireless connection private and your devices protected when online. We recommend you carefully review and consider complying with the following tips.

Ensure your wireless connection is secure.

- Before installing a device, ensure your router's wireless signal is encrypted by selecting the "WPA2-PSK with AES" setting in your router's wireless security menu.
- Change default settings.
- Change your wireless router's default wireless network name (SSID) to something unique.
- Change default passwords to unique, strong passwords. A strong password:
 - Is at least 10 characters long.
 - Is complex.
 - Does not contain dictionary words or personal information.
 - Contains a mix of uppercase letters, lowercase letters, special characters and numbers.

Keep your devices up to date.

- Download security patches from manufacturers as soon as they become available. This will ensure you always have the latest security updates.
- If the feature is available, enable automatic updates for future releases.
- Disable Universal Plug and Play (UPnP) on your router.
- UPnP enabled on a router can limit the effectiveness of your firewall by allowing other network devices to open inbound ports without any intervention or approval from you. A virus or other malware program could use this function to compromise security for the entire network.

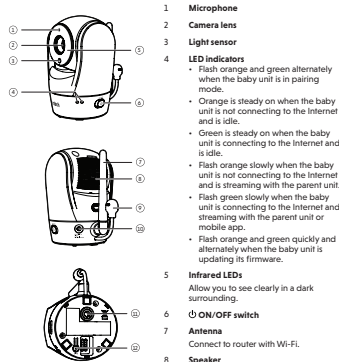
For more information on wireless connections and protecting your data, please review the following resources from industry experts:

1. Federal Communications Commission: Wireless Connections and Bluetooth Security Tips
www.fcc.gov/consumers/guides/how-protect-yourself-online
2. U.S. Department of Homeland Security: Before You Connect a New Computer to the Internet
www.cisa.gov/ncsc/tips/STIS-003
3. Federal Trade Commission: Using IP Cameras Safely
<https://www.consumer.ftc.gov/articles/0382-using-ip-cameras-safely>
4. Wi-Fi Alliance: Discover Wi-Fi Security
<http://www.wi-fi.org/discover-wi-fi-security>



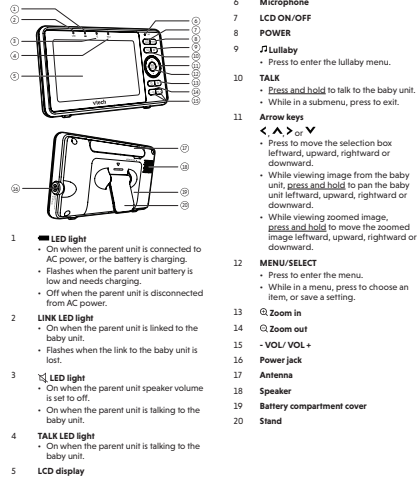
OVERVIEW

Baby unit overview



- 1 **Microphone**
- 2 **Camera lens**
- 3 **Light sensor**
- 4 **LED indicators**
 - Flash orange and green alternately when the baby unit is in pairing mode.
 - Orange is steady on when the baby unit is not connecting to the Internet and is idle.
 - Green is steady on when the baby unit is connecting to the Internet and is idle.
 - Flash orange slowly when the baby unit is not connecting to the Internet and is streaming with the parent unit.
 - Flash green slowly when the baby unit is connecting to the Internet and streaming with the parent unit or mobile app.
 - Flash orange and green quickly and alternately when the baby unit is updating its firmware.
- 5 **Infrared LEDs**
Allow you to see clearly in a dark surrounding.
- 6 **ON/OFF switch**
- 7 **Antenna**
Connect to router with Wi-Fi.
- 8 **Speaker**
- 9 **Temperature sensor**
- 10 **Power jack**
- 11 **Threaded socket**
- 12 **Pair/reset button**
 - **Press and hold** for three seconds to enter pairing mode.

Parent unit overview



- 1 **LED light**
 - On when the parent unit is connected to AC power, or the battery is charging.
 - Flashes when the parent unit battery is low and needs charging.
 - Off when the parent unit is disconnected from AC power.
- 2 **LINK LED light**
 - On when the parent unit is linked to the baby unit.
 - Flashes when the link to the baby unit is lost.
- 3 **LED light**
 - On when the parent unit speaker volume is set to off.
 - On when the parent unit is talking to the baby unit.
- 4 **TALK LED light**
 - On when the parent unit is talking to the baby unit.
- 5 **LCD display**
- 6 **Microphone**
- 7 **LCD ON/OFF**
- 8 **POWER**
 - Press to enter the lullaby menu.
- 9 **Lullaby**
 - Press and hold to talk to the baby unit.
 - While in a submenu, press to exit.
- 10 **TALK**
 - Press to enter the lullaby menu.
- 11 **Arrow key**
 - Press to move the selection box leftward, upward, rightward or downward.
 - While viewing image from the baby unit, press and hold to pan the baby unit leftward, upward, rightward or downward.
 - While viewing zoomed image, press and hold to move the zoomed image leftward, upward, rightward or downward.
- 12 **MENU/SELECT**
 - Press to enter the menu.
 - While in a menu, press to choose an item, or save a setting.
- 13 **Zoom in**
- 14 **Zoom out**
- 15 **VOL+/VOL+**
- 16 **Power jack**
- 17 **Antenna**
- 18 **Speaker**
- 19 **Battery compartment cover**
- 20 **Stand**



HOW THE SYSTEM WORKS

Direct mode

The parent unit and the baby unit of your video monitor connect to each others in **Direct mode** by default, which allows you to stream live video right out of the box. **Direct mode** connection lets you stream live video from parent unit only.



TIP

- You may experience reduced signal strength if your parent unit and baby unit are far apart, or there are obstructing factors, such as internal walls, between them. Move the parent unit closer to the baby unit to improve the signal strength. You can also set up **Router mode** to connect via your home Wi-Fi network to improve the connection between your parent unit and baby unit.

Router mode

You can continue using your video monitor with **Direct mode** connection, or you can set up your monitor in **Router mode** connection.

Router mode uses your home Wi-Fi network to connect your video monitor. It supports streaming live video through parent unit and smartphone app.

We recommend that you set up your monitor in **Router mode** to enjoy streaming live video via your parent unit with better connection.

If you want to stream live video remotely with your mobile device, download and install the **MyVtech Baby 1080p** app. With the mobile app, your Wi-Fi router (not included) provides Internet connectivity to your HD video monitor system. It serves as a communicating channel between your baby unit and mobile device, allowing you to monitor and/or control your baby unit wherever you are. For detail, see **Download app for mobile access** section in this quick start guide.

NOTES

- Your parent unit detects the connection signal strength. If you have connected your video monitor with your home Wi-Fi network, your parent unit automatically switches to direct or router mode - the one that has stronger signal strength.
- When both parent unit and app are viewing the camera simultaneously, the video quality will be optimized to deliver the best possible viewing result.



Vtech is a trademark of Vtech Communications, Inc. All rights reserved.
© 2020 Vtech Communications, Inc. All rights reserved.
All other trademarks are the property of their respective owners.



Model	Output	Power requirement	Maximum power consumed by FCC and CE (Actual operating range may vary according to environmental conditions at the time of use)	LCD	Frequency
Baby unit	DC 1.5A	Parent unit power adapter	1.5W (0.0022 peak)	5" Color LCD	2.4GHz 802.11 b/g/n
Parent unit	DC 1.5A	Parent unit power adapter	1.5W (0.0022 peak)	5" Color LCD	2.4GHz 802.11 b/g/n

TECHNICAL SPECIFICATIONS



CONNECT, CHARGE AND POWER ON THE BABY MONITOR

Connect the baby monitor

- NOTES**
- Use only the power adapters supplied with this product.
 - Make sure the parent unit and the baby unit are not connected to the switch controlled electric outlets.
 - Connect the power adapters in a vertical or floor mount position only. The adapters' prongs are not designed to hold the weight of the parent unit and the baby unit, so do not connect them to any ceiling, under-the-table, or cabinet outlets. Otherwise, the adapters may not properly connect to the outlets.
 - Make sure the parent unit, the baby unit and the power adapter cords are out of reach of children.
 - To maintain compliance with the FCC's RF exposure guidelines, place the baby unit at least 20cm from nearby persons.

Connect and power on the baby unit

1. Connect the power adapter to the baby unit and a power supply.
2. Slide the **ON/OFF switch** leftward to power on your baby unit.

NOTES

- When powering up, the baby unit's status LED turns on. It will turn off after a while and keeps off.
- The status LED is set to off by default. If you want to keep the LED on, press **MENU**, then go to **Status LED** and turn it on.

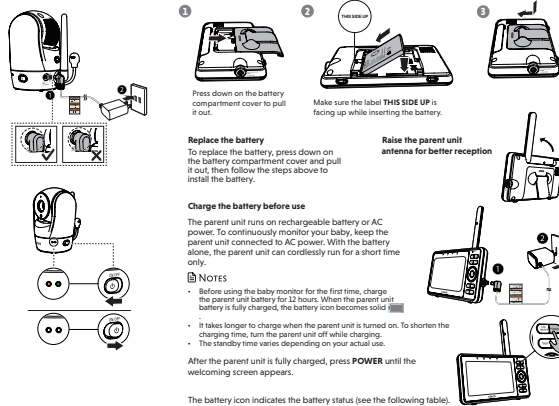


Connect and charge the parent unit

Install the parent unit battery
The parent unit runs on rechargeable battery or AC power. To continuously monitor your baby, keep the parent unit connected to AC power. With the battery alone, the parent unit can cordlessly run for a short time only.

NOTES

- Use only the battery supplied with this product.
- If the parent unit will not be used for a long time, disconnect and remove the battery to prevent possible leakage.



The battery icon indicates the battery status (see the following table).

BATTERY INDICATORS	BATTERY STATUS	ACTION
The screen displays and light flashes.	The battery has very little charge and may be used for only a short time.	Charge without interruption (about 30 minutes).
The battery icon becomes solid .	The battery is fully charged.	To keep the battery charged, connect it to AC power when not in use.



PARENT UNIT ICONS

Main Menu	Options	Main Menu	Options
Monitoring mode (For VM901-2 only)	<ul style="list-style-type: none">• View baby unit 1 or 2 in Single mode.• View both baby units in Patrol mode.• View both baby units in Split screen.	General settings	<ul style="list-style-type: none">• Connect to home Wi-Fi network.• Turn on/off Parent unit Wi-Fi Connection.• Connect mobile phone.• Turn on/off Low Battery Alert Tone.• Turn on/off No Link Alert Tone.
Melodies and soothing sounds	<ul style="list-style-type: none">• Select play all melodies, or play one of the five melodies and four soothing sounds.• You can also set the timer to stop playing after 15, 30 or 60 minutes, or playing non-stop.	Status icons	<ul style="list-style-type: none">• Direct mode Parent unit, baby unit 1 and baby unit 2 (For VM901-2 only) are connected to each others directly.• Router mode Parent unit, baby unit 1 and baby unit 2 (For VM901-2 only) are connected to home Wi-Fi network.• Baby unit 1 and 2 are being viewed in Patrol mode (For VM901-2 only).• Baby unit 1 and 2 are being viewed in Split mode (For VM901-2 only).• Night vision is turned on.• Motion alert is turned on.• Sound detection alert is turned on.• Melodies and soothing sounds are turned on.
Alerts - Sound, motion and temperature	<ul style="list-style-type: none">• Select the sound and motion sensitivity level.• Turn on/off sound and motion detection alerts.• Select maximum and minimum temperature for alert range.• Turn on/off temperature alert.• Turn on/off Auto Wake Up function.	Parent unit settings	<ul style="list-style-type: none">• Adjust parent unit screen brightness.• Turn on/off dim mode.
Baby unit settings	<ul style="list-style-type: none">• Turn on/off Night Vision.• Turn on/off baby unit's status LED.• Adjust baby unit's speaker volume.• Update baby unit's security key.	Baby unit settings	<ul style="list-style-type: none">• Turn on/off Night Vision.• Turn on/off baby unit's status LED.• Adjust baby unit's speaker volume.• Update baby unit's security key.

