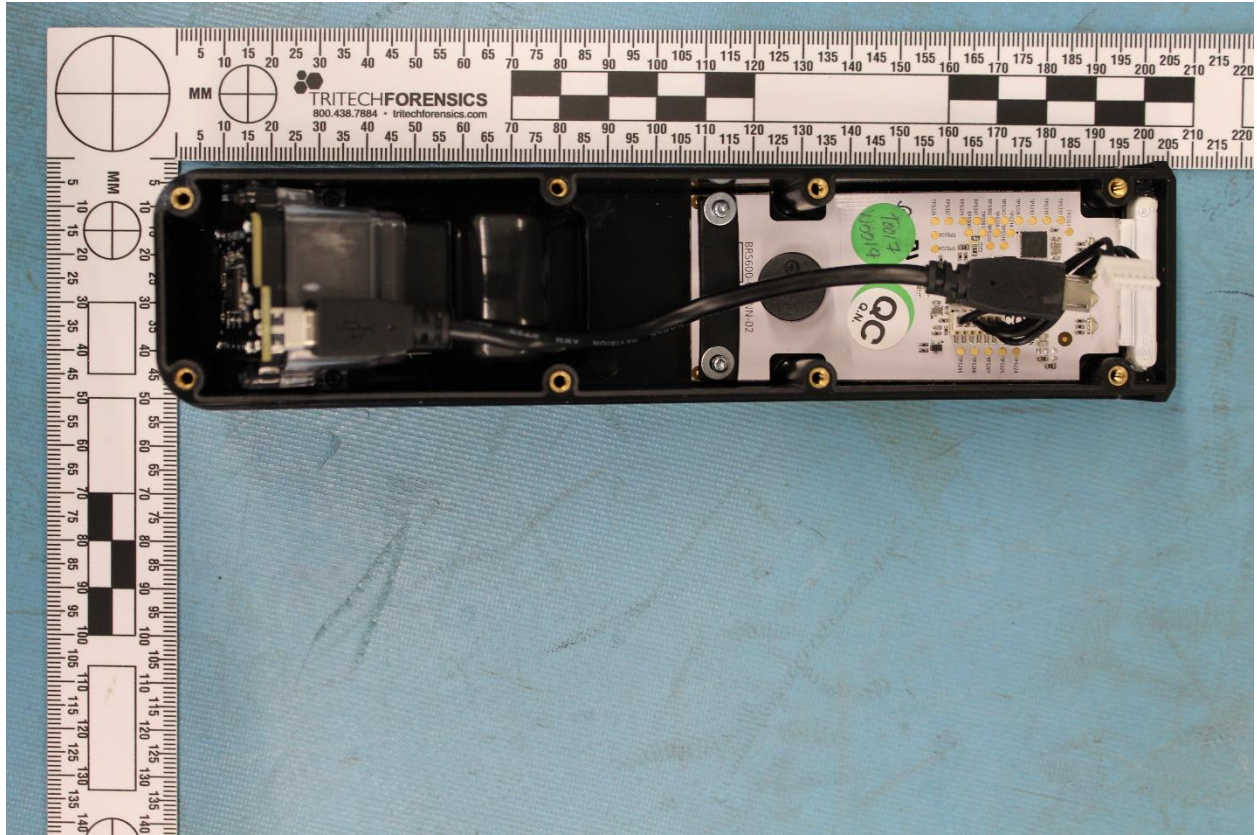
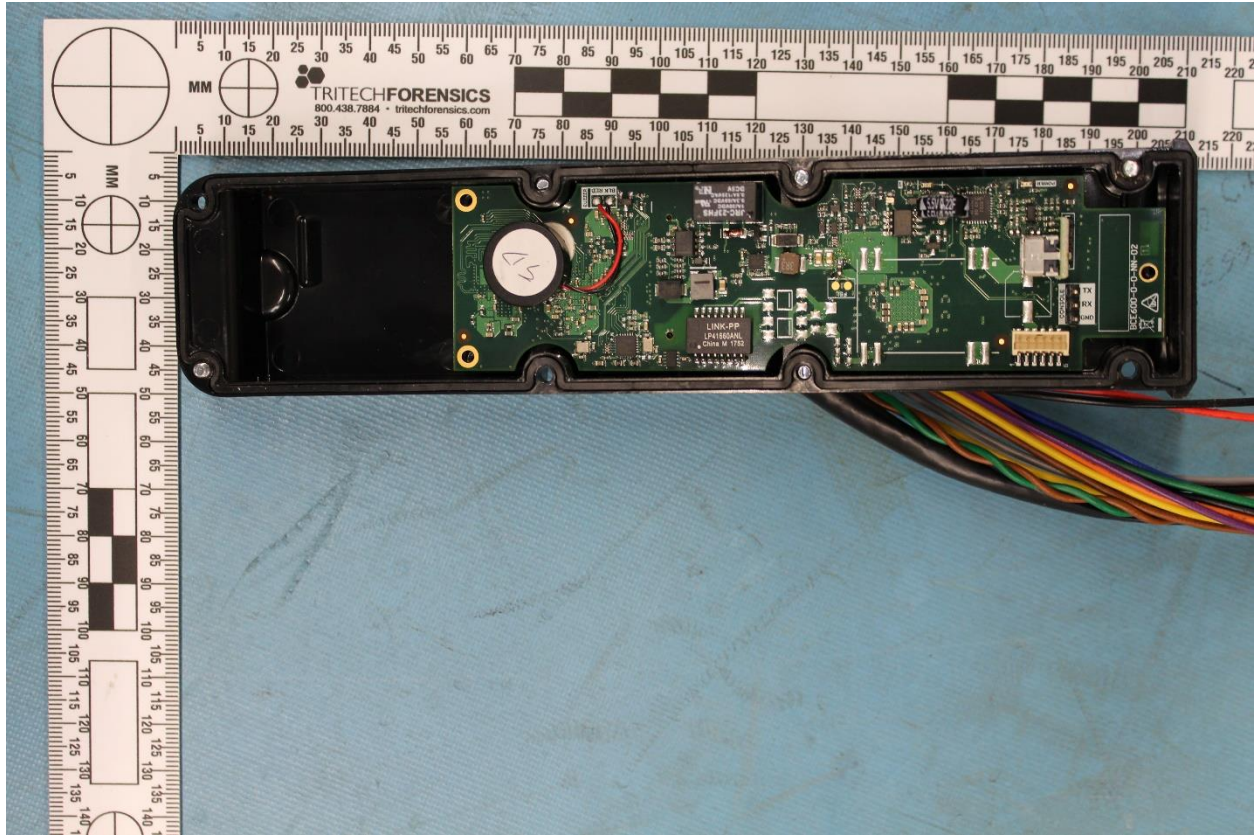


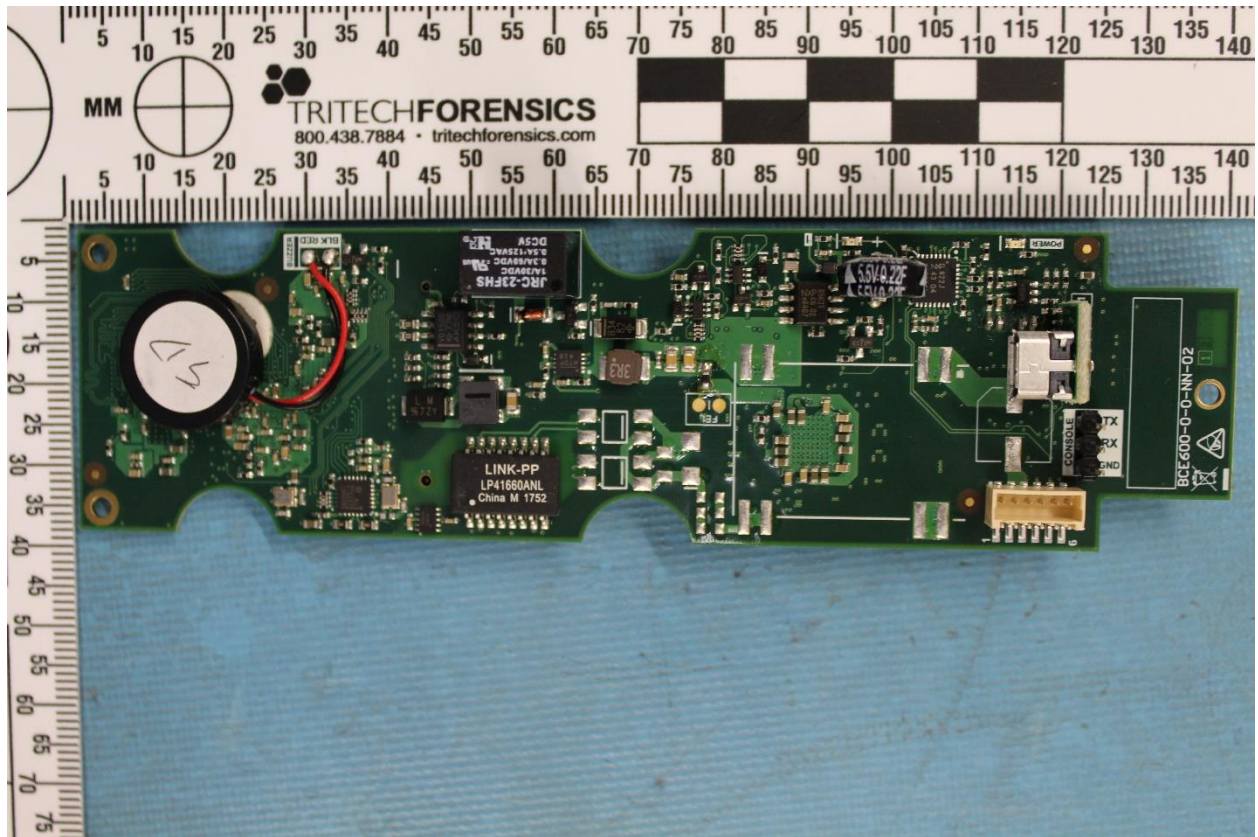
Internal, Top View



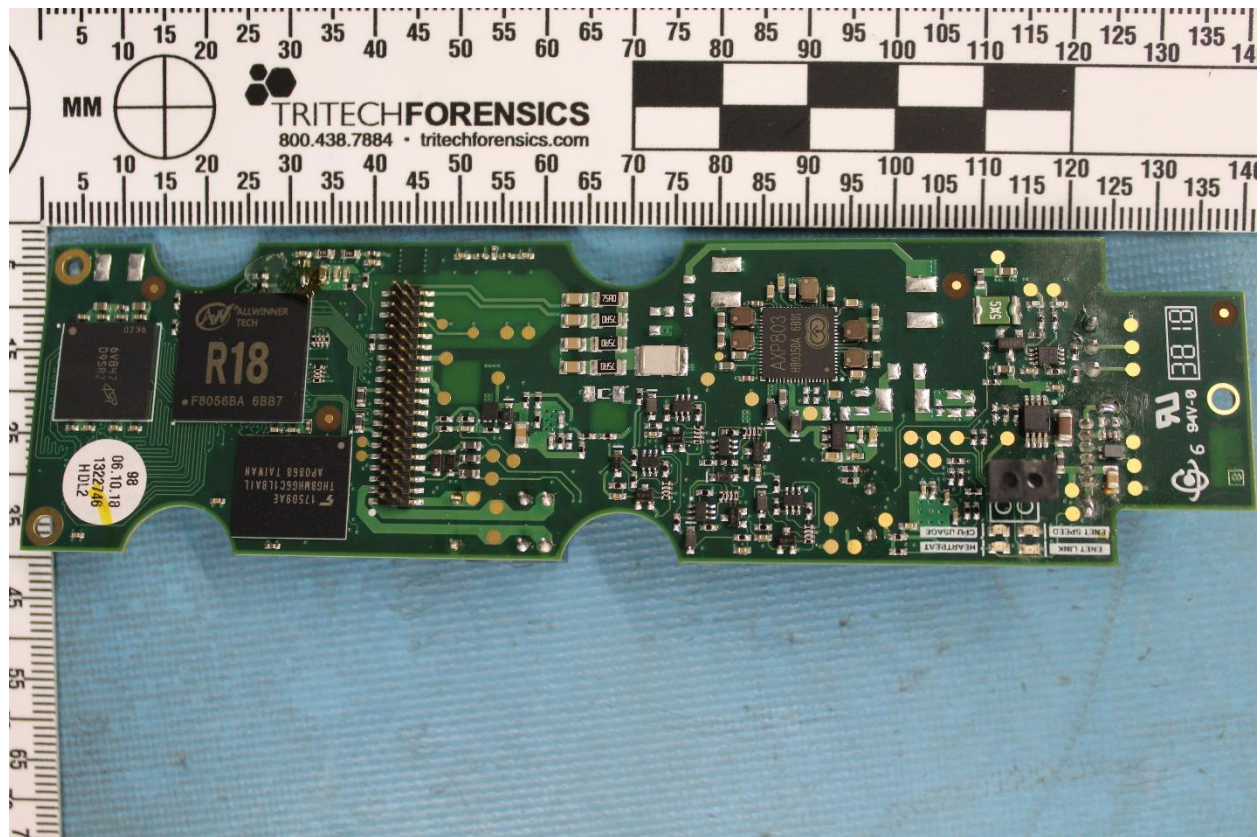
Internal, Bottom View



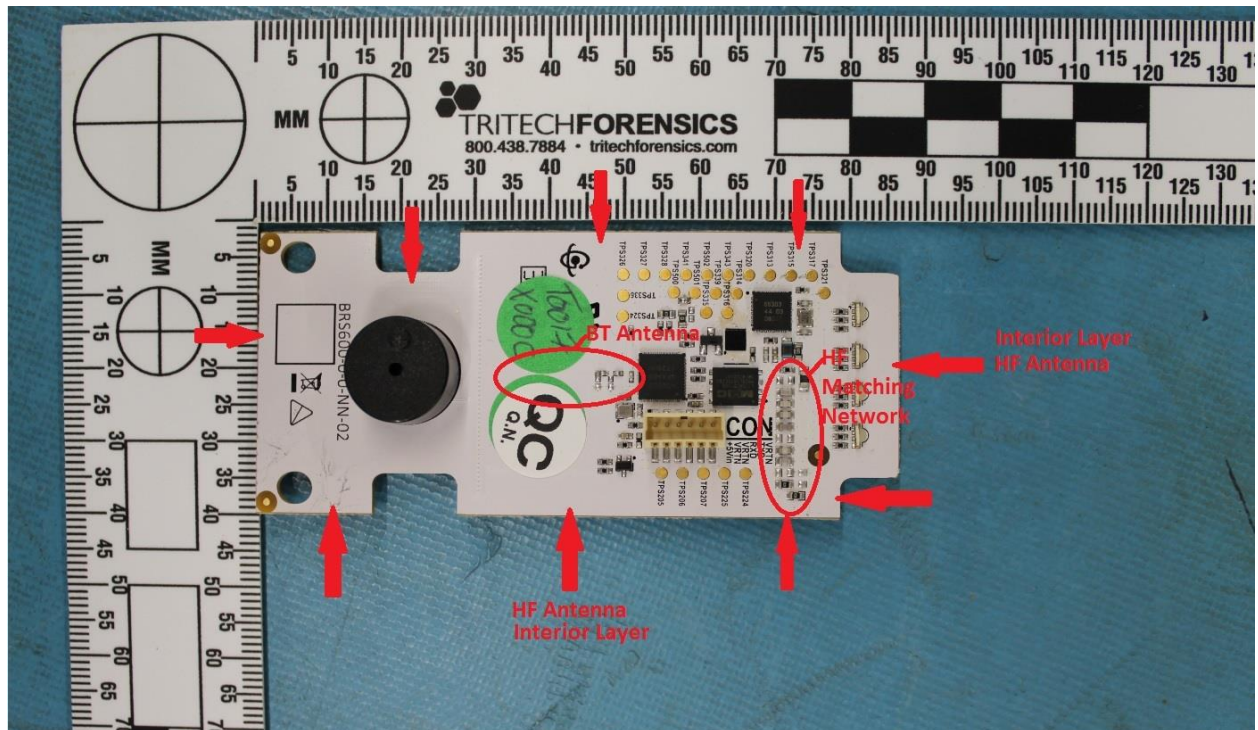
Printed Circuit Board, Main Top View



Printed Circuit Board, Main Rear View

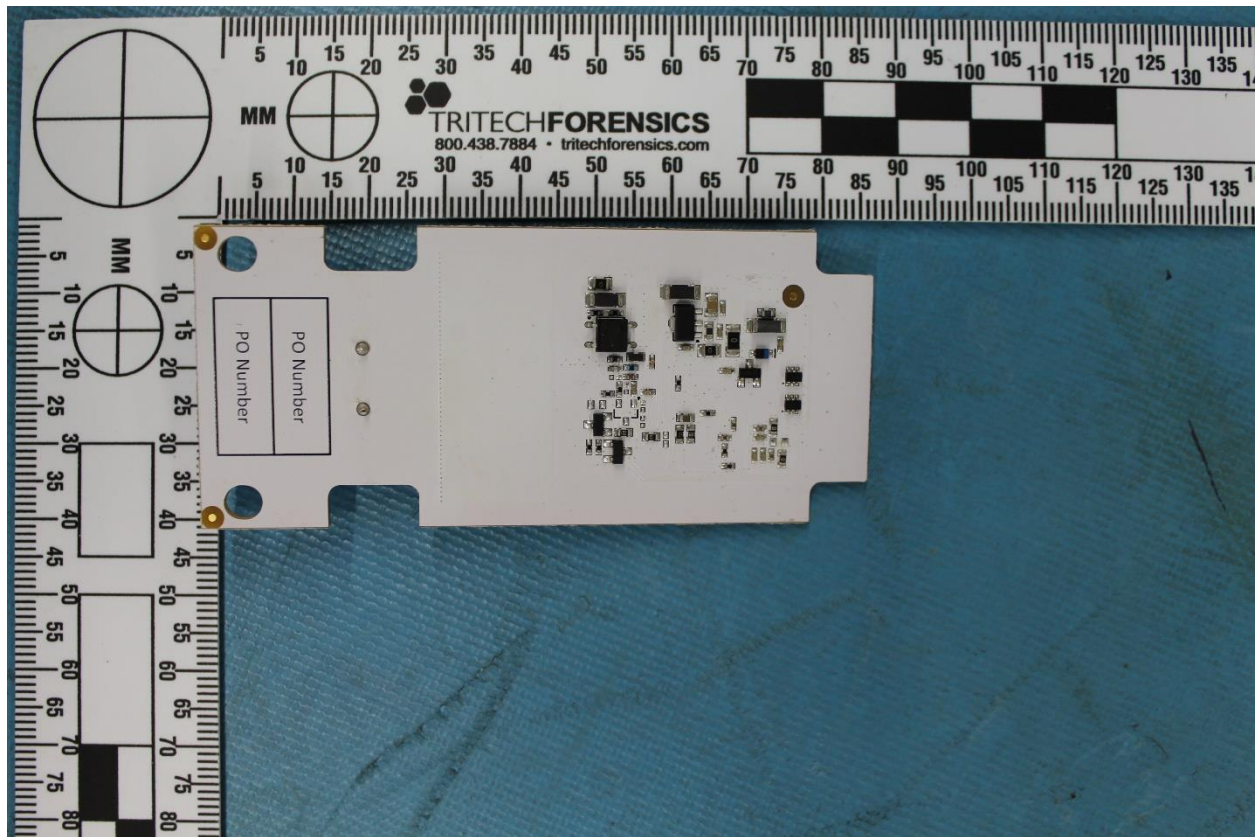


Printed Circuit Board, Daughter Top View



Note: Both the HF (13.56 MHz and BLE Antenna's are on internal layers)

Printed Circuit Board, Daughter Rear View



External Open Split View

