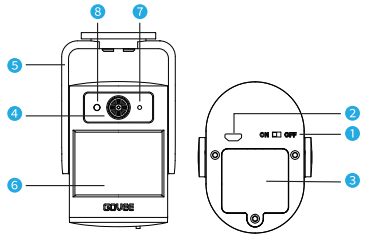


# At a glance



- 1 On/Off
- 2 Micro USB
- 3 Battery Cover
- 4 Camera
- 5 Bracket with Rotating Shaft
- 6 Fresnel Lens
- 7 Indicator
- 8 Photoconductor

# Specifications

Smart Motion Sensor	
Input	AA Battery*4
USB-powered Voltage	5V
Wi-Fi-enabled Distance (No obstacles)	30m/98ft
Sensitivity	3000V/W
Detecting Angle	110°
Detecting Distance	3m/10ft

# Installing the Motion Sensor

- 1 Pull out the insulation sheet ;

2 Install the sensor:

a. Choose a place at the height of 6.5~8.0ft/ 2~2.4m;

b. Install it at the side of the door and aisle.

Notice: It's hard for the infrared sensing area to detect the motion facing to it.

c. Set up the bracket via screws/3M adhesives;

d. Install the sensor on the bracket;

e. Adjust the camera to the area you want to monitor.

Notice:

Don't install outdoors.

Avoid direct sunlight.

Don't use in too high or low temperature

Keep away from the fan and air conditioner.

# Downloading the Govee Home App

- Download the Govee Home app from App Store (iOS devices) or Google Play (Android devices).
- A smart phone or tablet running iOS 9.3 (or above) or Android 4.3 (or above).



# Connecting to a Wi-Fi Network

Note: Please make sure the Wi-Fi is 2.4GHz and 802.11 b/g/n bands before connecting to Wi-Fi

1 Turn on Bluetooth in your phone;

2 Connect your phone to a 2.4GHz Wi-Fi;

4 Turn on/Restart the sensor;

5 Enter Wi-Fi password;

which can be determined by turning the equipment off and on, the user is encouraged to try to correct the interference by one or more of the following measures:

- 1.Reorient or relocate the receiving antenna.
- 2.Increase the separation between the equipment and receiver.
- 3.Connect the equipment into an outlet on a circuit different from that to which the receiver is connected.
- 4.Consult the dealer or an experienced radio/TV technician for help.

## FCC Radiation Exposure Statement

This equipment complies with FCC radiation exposure limits set forth for an uncontrolled environment. This equipment should be installed and operated with minimum distance 20cm between the radiator & your body.

## FCC STATEMENT

This device complies with Part 15 of the FCC Rules. Operation is subject to the following two conditions:(1) This device may not cause harmful interference, and (2) This device must accept any interference received, including interference that may cause undesired operation.Warning: Changes or modifications not expressly approved by the party responsible for compliance could void the user's authority to operate the equipment.

**NOTE:** This equipment has been tested and found to comply with the limits for a Class B digital device, pursuant to Part 15 of the FCC Rules.

These limits are designed to provide reasonable protection against harmful interference in a residential installation. This equipment generates uses and can radiate radio frequency energy and, if not installed and used in accordance with the instructions, may cause harmful interference to radio communications. However, there is no guarantee that interference will not occur in a particular installation. If this equipment does cause harmful interference to radio or television reception,

## Warning

- 1 Please take out the battery if the sensor is powered by USB or not used for a long time.
- 2 Please ensure the installation is stable enough to prevent the sensor from falling.
- 3 Do not violently disassemble the sensor.

## Customer Service

- Warranty: 12-Month Limited Warranty
- Support: Lifetime Technical Support
- Email: support@govee.com
- Official Website: www.govee.com
- @Govee @Govee @Govee
- @Goveeofficial

- d.Please check the cable and plug if your sensor is USB powered.
  - e. Please adjust the sensor's position as mentioned above (Notice in Installing the Motion Sensor).
- 4 Delayed alarm notification/App failed to upload photos.
    - a. Check whether Wi-Fi and your phone signal are stable.
    - b. Make sure Govee Home is allowed in your phone.
    - c. Keep the sensor and router as close as possible.
    - d.Keep as less as obstacles between the router and the sensor.
  - 5 AI Recognition turns off automatically.
    - a. AI Recognition turns off automatically once its number of times has reached to the upper limit.
    - b.Please adjust the sensor's position as mentioned above (Notice in Installing the Motion Sensor).

## Troubleshooting

- 1 Arm delays.  
It will take minutes to arm thus you have time to leave the monitoring area.
- 2 No/Lost Wi-Fi connection.
  - a. Only 2.4GHz is available. 5GHz is not supported.
  - b. Please check whether Wi-Fi password you entered is correct.
  - c. Keep the sensor within router-enabled range (less than 30m/98ft is suggested).
  - d.Please keep as less as obstacles between the router and the sensor.
- 3 The sensor doesn't work.
  - a. The interval between two triggers should be more than 5 minutes.
  - b. Make sure the insulation sheet is pulled out.
  - c. Check whether the battery is low.

Rotating Image

0° 180°

Rotating Image:  
Flip the photo by 180°.

AI Recognition

AI Recognition:  
Only push notifications when human body movement is detected (The notification may delay about 3s).

Ring Alarm

Vibration Alarm

Ring/Vibration Alarm:  
The phone rings or vibrates when app pushes notifications.

**Notice:**  
If you need to replace the battery without resetting Wi-Fi, just turn on the device and wait for 90s and then it reconnects to Wi-Fi automatically.

## Controlling the Motion Sensor with Govee Home

Arm/Disarm:

Arm:The motion sensor detects the environment;  
Disarm:The motion sensor doesn't work.

Arm/Disarm Timer

Arm/Disarm Timer:  
Arm/Disarm in a preset time.

6 Connected to Wi-Fi;

The indicator flashes blue slowly for 5s.

Please check the above steps and try again.

7 Failed to connect;

The indicator flashes red slowly for 5s.