



Quick Start Guide

Wireless Screen Sharing and Miracast Kit

GWSSKIT

PART NO. Q1442-a

www.iogear.com

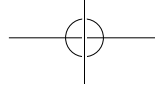
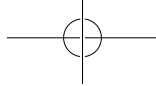


Table of Contents

Introduction	4
Features	4
Package Contents	5
System Requirements	5
Overview	6
Hardware Installation	7
Software Installation	18
Compliance Information	21
Limited Warranty	21
Contact	21

Designed in California, USA ©2018 IOGEAR® All rights reserved. ATEN is a registered trademark of ATEN International Co., LTD. All other trademarks are the properties of their respective owners. Reproduction in whole or in part without permission is prohibited. Tested to Comply With FCC and CE Standards. FOR HOME OR OFFICE USE. Mac and the Mac logo are trademarks of Apple Computer, Inc. registered in the U.S. and other countries. Specifications subject to change without notice.



Introduction

IOGEAR's Duplicast Wireless Screen Sharing kit allows you to enjoy all of your personal and online content wirelessly on your big screen HDTV. Using your smartphone, tablet or Windows based computer, you can sit back and experience your favorite movies, videos, photos, online shows and more in Full HD on your HDTV with great image, clarity and sound.

Note: For a list of known Miracast-certified devices, please visit:
<http://www.wi-fi.org/discover-wi-fi/wi-fi-certified-miracast>

Features

Wirelessly send your favorite apps, games, videos, photos, music and Internet content from your Smart Phone, Tablet or Laptop to your HDTV, HD Projector or HD Display
Creates its own dedicated wireless connection for better performance
Send video and audio wirelessly up to 50ft (15m)
Full HD 1080p video resolution playback support
Works with Intel® WiDi and Miracast™ certified devices
Supports AES, TKIP, WEP, WPA & WPA2 encryptions for secure data transmission
Ideal solution for sharing PC content wirelessly at Home, at the Office and in the Classroom

Package Contents

- | | |
|-------------------------------------|-----------------------|
| 1 x Duplicast Wireless A/V Receiver | 1 x Installation CD |
| 1 x Power Adapter | 1 x Quick Start Guide |
| 1 x Micro USB Power Cable | 1 x Warranty Card |
| 1 x HDMI Cable | |

System Requirements

PC (Minimum Requirements)

- Intel Core i5 2nd Gen or AMD Phenom II X4 equivalent or newer
- 4GB or more of system memory (RAM)
- Wireless networking capability

Operating Systems

- Windows® 7 or later

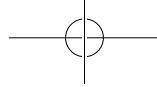
Smartphones and Tablets

- Wi-Fi Miracast™ certified
- Android 4.2 or later
- Windows® 8.1 or later*

Display

- HDTV or Projector with HDMI port

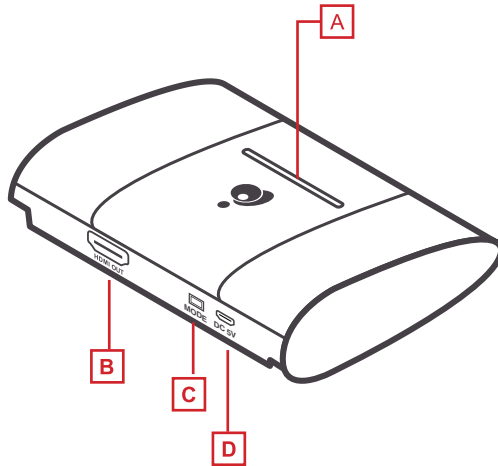
*This product will not work with Apple IOS



Overview

Receiver:

- A. Power LED
- B. HDMI Out
- C. Mode
- D. USB Micro-B Power Port



6

Hardware Installation

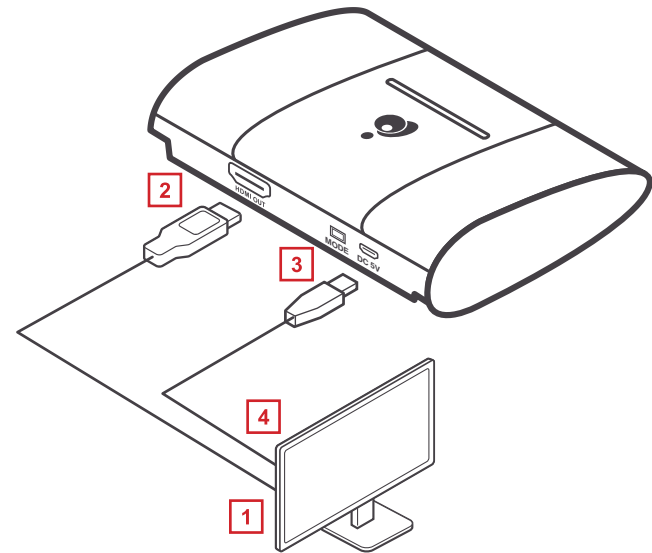
Set up the Duplicast Wireless A/V Receiver

Connect one end of the included HDMI Cable into an available HDMI input on your HDTV or HD Projector.

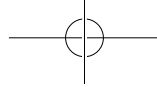
Connect the other end of the HDMI cable to the HDMI port on the Duplicast Wireless A/V Receiver.

Plug the Micro USB end of the Power Cable into the USB-Micro B power port on the Duplicast Wireless A/V Receiver.

Plug the other end of the USB Power Cable into the USB port on your TV, or projector.

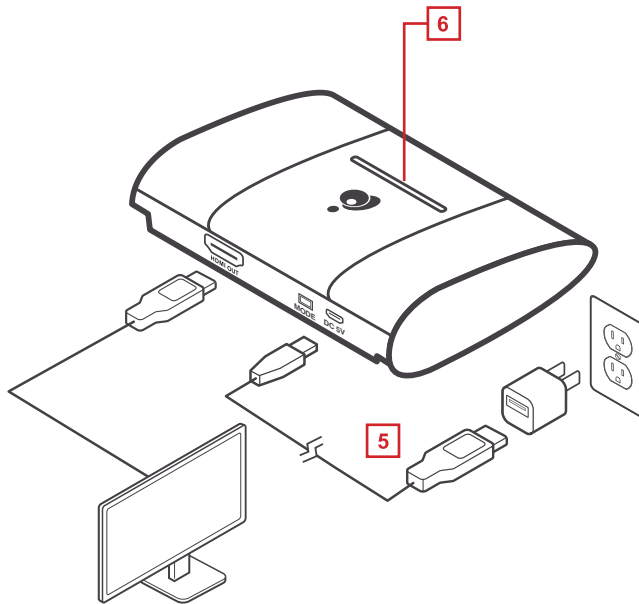


7



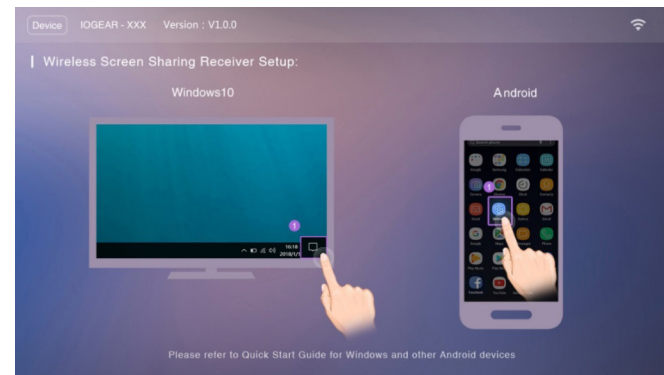
Or plug the other end of the USB Power Cable into the USB Power Adapter included in the package. Then plug the USB Power Adapter into an available power outlet.

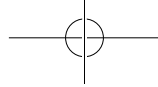
The Power LED will light solid blue.



If you have Windows 7 or 8, please skip to page 18

Turn on your TV or projector, and make sure you select the correct video source. The IOGEAR Duplicast flash screen will come up on the display and on the top left of the screen will be the device name IOGEAR-xxx.



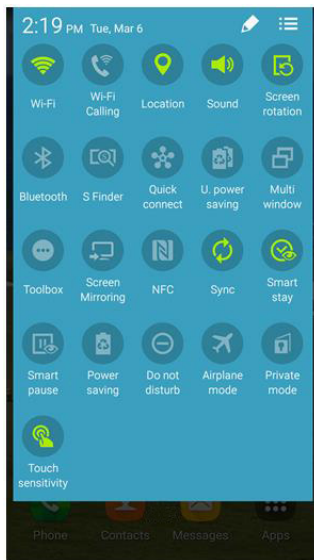


Determine if you're connecting via Wi-Fi Direct or connecting via USB Wi-Fi adapter

After the receiver is powered on, choose from one of two ways to cast the content from your device to the big screen TV: Wi-Fi Direct or via the USB Wi-Fi adapter. This is determined by the mobile device you are using (i.e. smartphone, tablet, laptop, PC, etc.). If you're using Windows7, then you would need the USB WIFI adapter

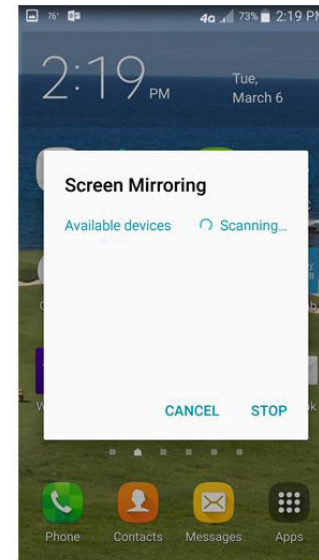
Android devices

On your Home screen. Using two fingers, swipe down from the top of the screen and "Options" menu will appear. From the Options menu choose "Smart View" (some older version may label it "Screen Mirroring")

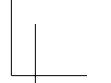
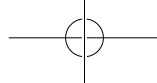


10

Your device will start searching for the Duplicast Wireless A/V Receiver. Once the receiver appears, tap on it to connect.



11

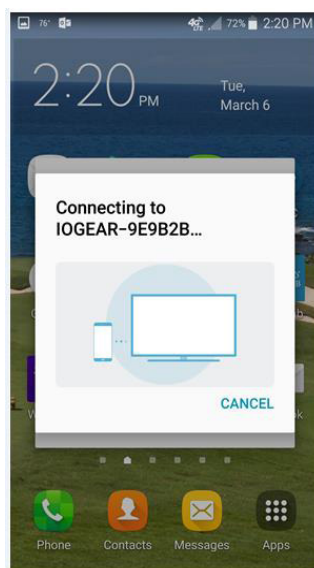


3. After you initiate the connection, wait a few seconds for your device to establish the connection with the wireless receiver.

When a black screen displays on both the TV and your device, the connection has been established. The technical term for this is “sync”, and the two devices have now synced with each other.

After a connection is established you should be able to see a mirror image of your device on the big screen TV; whatever you do on your mobile device will be duplicated on the big screen from this point and on.

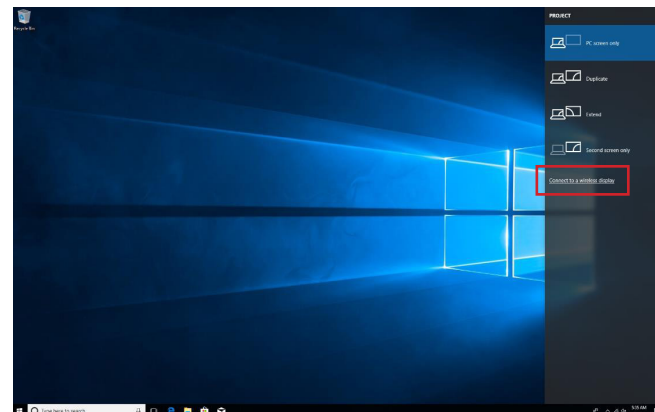
To disconnect from the TV, you can either turn off your device or disconnect from the Display options screen.



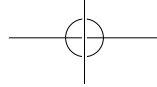
12



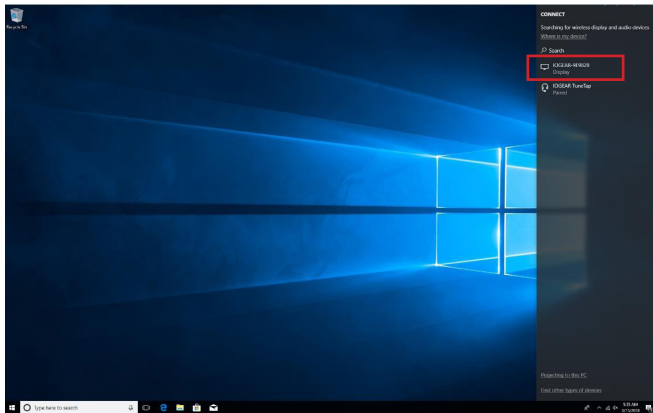
If you have a computer with Windows 10 you can click on Windows key + p or go to “Setting” and choose “Display”. If you see an option for “Connect to a wireless display”, your computer is Wi-Fi Direct ready.



13

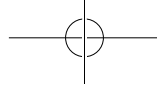


If you don't see any of the aforementioned options, then you need to use the wireless USB adapter to establish a connection. (Go to page 18 to see detailed steps). If you see the above screen, click on "Connect to a wireless display". Windows will now search for the GWSSKIT, the name will be IOGEAR-xxxx.

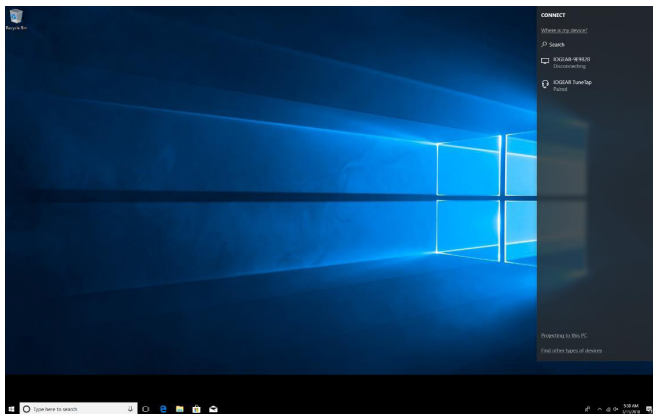


Click on the name IOGEAR-xxxx and connection will initiate.

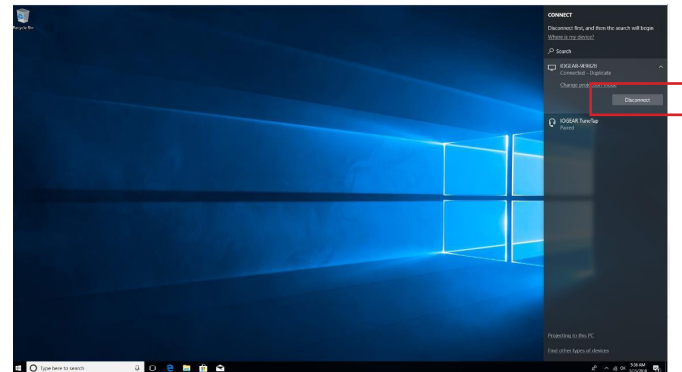




Once you have established connection Windows will cast your content to the big screen. This screen will indicate that the connection is now established and you can click on “Disconnect” when you no longer want to cast to your TV.

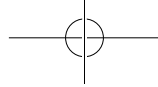


To disconnect, simply click on “Disconnect and Windows will terminate the connection.



Connect with the included software

If your device does not support Wi-Fi-Direct, then use the included software from the installation CD to create its own dedicated Wi-Fi connection to send the video from your small screen to the big screen. Please check the system requirements first to make sure your device meets the minimum requirements.

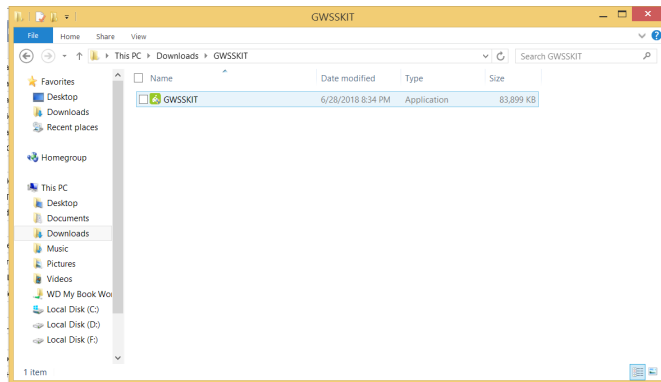


Software Installation

Windows 7, 8

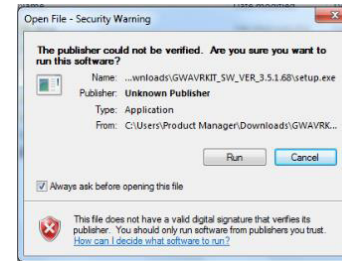
Close all other applications

Please insert the included CD into your CD/DVD drive and click on the GWSSKIT



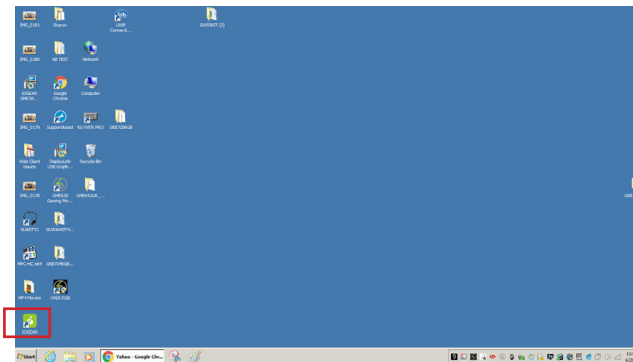
18

Click on "Run" (Different Operating System may ask Yes or No, Click "Yes")

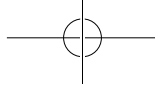


When the installation is finished, the software will automatically install. Once that is finished:

- I. Locate the "Mode" button on the back of your GWSSKIT and press it once to change the TV screen from Windows 10 and Android to Windows 8.x/Windows 7 screen
- II. Go to your Desktop and you will see a LOGEAR icon, click on it to launch the application.



19



Limited Warranty

This product carries a 1 Year Limited Warranty. For the terms and conditions of this warranty, please go to <http://www.iogear.com/support/warranty>

Register online at <http://www.iogear.com/register>

Important Product Information

Product Model _____

Serial Number _____

Contact

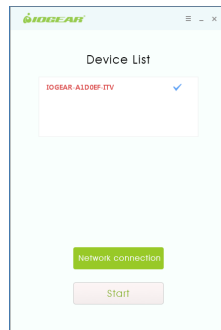
WE'RE HERE TO HELP YOU! NEED ASSISTANCE SETTING UP THIS PRODUCT?

Make sure you:

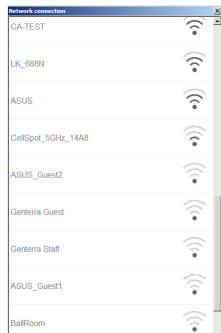
1. Visit www.iogear.com for more product information
2. Visit www.iogear.com/support for live help and product support

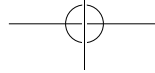
www.iogear.com | iogear.custhelp.com | support@iogear.com

Duplicast will now search for the Duplicast devices connected, once found, click on the device in the Device List; click on "Start" and your computer screen will now be casted onto your TV. At this time you can either mirror or extend the same way as if you are physically connected to the TV as your second screen.



You can click on "Network Connection" and "Scan" to add your existing network (optional) to the wireless list (as your computer will now also be connected to the GWSSKIT).





Compliance Information

⚠ WARNING: Cables, Cable Assemblies, and Printed Circuit Boards can expose you to chemicals including lead and lead compounds which are known to the State of California to cause cancer and birth defects or other reproductive harm. For more information, go to www.P65Warnings.ca.gov

FCC Warning:

This equipment has been tested and found to comply with the limits for a Class B digital device, pursuant to part 15 of the FCC Rules. These limits are designed to provide reasonable protection against harmful interference in a residential installation.

This equipment generates, uses and can radiate radio frequency energy and, if not installed and used in accordance with the instructions, may cause harmful interference to radio communications. However, there is no guarantee that interference will not occur in a particular installation. If this equipment does cause harmful interference to radio or television reception, which can be determined by turning the equipment off and on, the user is encouraged to try to correct the interference by one or more of the following measures:

- o Reorient or relocate the receiving antenna.
- o Increase the separation between the equipment and receiver.
- o Connect the equipment into an outlet on a circuit different from that to which the receiver is connected.
- o Consult the dealer or an experienced radio/TV technician for help.

Caution: Any changes or modifications to this device not explicitly approved by manufacturer could void your authority to operate this equipment.

This equipment complies with FCC RF radiation exposure limits set forth for an uncontrolled environment. This device and its antenna must not be located or operating in conjunction with any other antenna or transmitter.

"To comply with FCC RF exposure compliance requirements, this grant is applicable to only mobile configurations. The antennas used for this transmitter must be installed to provide a separation distance of at least 20 cm from all persons and must not be co-located or operating in conjunction with any other antenna or transmitter."

Note: This device should be used for indoor only.





 **IOGEAR®**

© 2018 IOGEAR®