



ALP-XP400 **XPEDITION 4** USER MANUAL

Introduction

Thank you for purchasing our ALP-XP400 Xpedition 4. We are confident that the Altec Lansing family of products will make your life easier by using the latest technological advancements in sound reproduction and will raise the bar for pro audio products.

Support

At Altec Lansing, our highest priority is making your experience unforgettable. Need help with setting up, troubleshooting, or looking for some tips? We're here for you, Monday through Friday 9AM to 5PM EST.



1-888-703-2307

altec Lansing.com

Index

What's Included	2
Power On	3
Lighting	3
Lighting Modes and Color Control	3
Bluetooth Pairing	4
Bluetooth Linking	4
AUX Input	5
Beast Mode	5
Recharge Your Speaker	5
Check Battery Status	5
Charging External Devices	6
Weather Resistance (IP67 Rating)	6
FCC Compliance Statement	7
Caution	7
Precautions	7
Warranty and Repair	8
Limited Warranty	8
Return/Repair	8

What's Included

Please ensure that you find these accessories included with your Xpedition 4 speaker:

- 1 ALP-XP400 Xpedition 4 Speaker
- 1 Power Supply
- 1 Strap



Power On

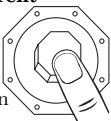


- **Turn the VOLUME knob to 0.**
- Apague completamente el botón VOLUMEN.
- **Be sure to charge the battery fully before first use.**
- Asegúrese de cargar la batería completamente antes de usar la bocina por primera vez.
- **Press the POWER button. As soon as it's on you'll hear "Welcome to Altec Lansing".**
- Enciende el botón POWER. Cuando esté encendido oírás "Welcome to Altec Lansing".



Lighting

- **The Xpedition 4 has lights built into the front of the speaker.**
- La bocina Xpedition 4 tiene luces delanteras.
- **Press the LIGHTS button to switch between the 5 built-in light modes.**
- Presione el botón LIGHTS para elegir uno de los 5 modos de iluminación.
- **To change the color of the current light mode, press and hold the VOLUME knob for 2 seconds.**
- Para cambiar el color del modo de luz actual, mantenga pulsado el botón VOLUMEN durante 2 segundos.
- **Turning the VOLUME knob will change the color of the lights. There are 12 color combinations including random. You will automatically exit color change mode by not using any control for 2 seconds.**



- Girar el botón VOLUMEN cambiará el color de las luces. Hay 12 combinaciones de colores incluyendo al azar. Saldrá automáticamente del modo de cambio de color al no utilizar ningún control durante 2 segundos.

- **To turn the strobes ON or OFF, press the STROBE button.**

- Para encender o apagar los flashes, presione el botón STROBE.

- **If you are sensitive to flashing lights, please be sure to turn the strobes OFF when using the speaker.**

- Si es sensible a las luces intermitentes, asegúrese de apagar las luces estroboscópicas cuando use la bocina.

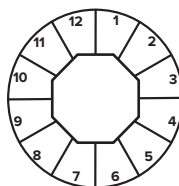


Lighting Modes and Color Control

The Xpedition 4 has multi-color lighting built into the front of the unit. There are 3 main light areas: speakers, rings and strobes. Pressing the LIGHTS button to the right of the POWER button cycles through the 5 different lighting modes:

- **Mode 1:** Speakers and rings are always a different color. Lights randomly change color combinations unless user selects a specific combination (then lights remain on user selected combination). Strobes flash at 170 BPM.
- **Mode 2:** Speakers and rings are always different colors. Lights change color to the beat of the music. If user selects a combination, lights stay that color and flash to the music. Strobe flashes at 170 BPM.
- **Mode 3:** Lights pulse to the beat of the music, with speaker and ring lit the same color. User can change light color. Strobe flashes at 170 BPM.
- **Mode 4:** Speakers and rings are always the same color. Lights randomly change color combinations unless user selects a specific color (then lights remain on user selected color). Strobes flash at 170 BPM.

Lighting Color Chart



- | | |
|---------------|---------------|
| 1. Red | 7. Lime |
| 2. Lavendar | 8. Sky Blue |
| 3. Royal Blue | 9. Yellow |
| 4. White | 10. Purple |
| 5. Green | 11. Turquoise |
| 6. Light Blue | 12. Random |

- **Mode 5:** All lights off.

Bluetooth Pairing

This allows you to pair a portable device to the Xpedition 4 to play your favorite streaming music.

Esto le permite emparejar un dispositivo portátil a la bocina para reproducir su música favorita.

• **Press the BLUETOOTH button for 2 seconds. Button will start blinking blue.**

• Presiona el botón BLUETOOTH en la bocina. El botón encenderá una luz azul parpadeante.



• If your phone is NFC compatible, press the BLUETOOTH button and tap your phone against the NFC logo on the top of Xpedition 4 to pair (NFC must be turned on in your portable device settings).

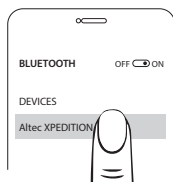
• Si su teléfono es compatible con NFC, resona el botón BLUETOOTH en la bocina y toque su teléfono contra el logotipo de NFC en la bocina para emparejar (NFC debe estar activado en la configuración del dispositivo portátil).

Note: The N-Mark is a trademark or registered trademark of NFC Forum, Inc. in the United States and in other countries.



• To pair with Bluetooth, open Bluetooth settings on your mobile device and look in the device list for “ALTEC XPEDITION 4”. Select it and complete the pairing process.

• Para sincronizar Bluetooth, abra la configuración Bluetooth de su dispositivo móvil y busque en la lista de dispositivos “ALTEC XPEDITION 4”. Seleccione y complete el proceso de emparejamiento.



• Once pairing is complete, the BLUETOOTH button will light solid blue, and you will be able to enjoy streaming

music from your mobile device. Pressing and holding the BLUETOOTH button for 4 seconds will drop the current connection.

• Cuando se haya completado el apareamiento, el botón BLUETOOTH encenderá una luz azul, ahora estará listo para reproducir música. Al presionar y mantener presionado el botón BLUETOOTH durante 4 segundos, se desconectará la conexión actual.

Bluetooth Linking

The Xpedition has the ability to link wirelessly with another Xpedition to create a stereo pair.

La bocina Xpedition tiene la capacidad de conectarse a otra bocina Xpedition.

• **Pair your first Xpedition (follow the Bluetooth Pairing Instructions)**

• Empareje su primera Bocina Xpedition (siga las instrucciones de emparejamiento de Bluetooth).

• **Pair the second Xpedition to the same device.**

• Empareje la segunda bocina Xpedition al mismo dispositivo.

• **Press the LINK button on both Xpeditions. They will flash.**

• Presione el botón LINK en ambas Bocinas Xpedition. Los botones de LINK parpadearán.



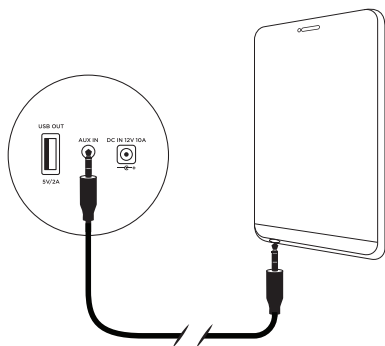
• After several seconds the LINK buttons will light solid and both units will be linked.

• Después de varios segundos, los botones LINK se iluminarán y se vincularán ambas unidades.

Note: Many environmental factors can affect the range of Bluetooth devices. To achieve the best performance possible, place your product in the middle of the room and make sure it's not blocked by walls, furniture, or other obstructions.

AUX Input

- The AUX input on the Xpedition 4 allows you to connect a wired external source.
- La entrada AUX en la bocina le permite conectar una fuente externa con cable.



- When a device is connected to the AUX IN jack, you will not be able to hear the Bluetooth source.
 - Cuando un dispositivo esté conectado a la toma AUX IN, no podrá escuchar la fuente Bluetooth.
- Note: The AUX IN is located behind the waterproof cover on the back of the Xpedition 4.**

El AUX IN se encuentra detrás de la cubierta impermeable en la parte posterior de la bocina.

Beast Mode

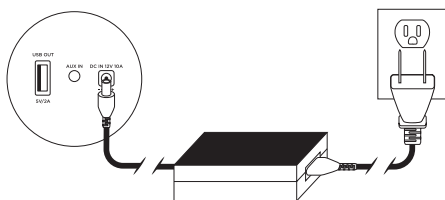
- Pressing the BEAST button will increase low frequency response and give your music deeper bass.
- Al presionar el botón BEAST, aumentará la respuesta de las bajas frecuencias y le dará a su música graves más profundos.



Recharge Your Speaker

With AC Power Adapter:

- Connect Power Adapter from mains power to DC power input.
- Conecta la bocina al toma corriente.

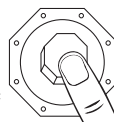


On DC Power:

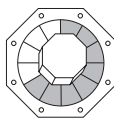
- The Xpedition 4 is capable of operating and charging from a DC power source, like your car's battery.
- La bocina es capaz de operar y cargar desde una fuente de alimentación de DC, como la batería de su automóvil.
- The power supply should provide 12V-15V DC @ up to 10A (maximum).
- La fuente de alimentación debe proporcionar 12V-15VDC @ hasta 10A (máximo).

Check Battery Status

- You can check the internal battery level on the Xpedition 4 by pressing the VOLUME knob for less than 1 second.



- Puede comprobar el nivel de carga interna de la batería de la bocina presionando el botón VOLUMEN durante menos de 1 segundo.
- The LED ring around the VOLUME knob will light, indicating the amount of charge left in the unit (each of the 12 segments represents approximately 8.3%).
- El anillo LED alrededor del botón VOLUMEN se encenderá, indicando la cantidad de carga restante en la bocina (cada uno de los 12 segmentos representa aproximadamente 8,3%).
- When charging, the LED ring will stay illuminated. When charging is complete, it will shut off.
- Al cargar, el anillo LED permanecerá iluminado. Cuando se complete la carga, se apagará.



Battery level 66.63%

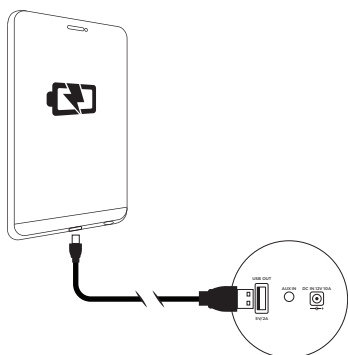
Charging External Devices

The Xpedition 4 can charge your phone or other portable device.

La bocina puede cargar otro dispositivo portátil.

• Using an approved USB charging cable for your device, connect to the USB type A port on the back of the Xpedition 4. Connect the smaller end to your portable device.

• Con el cable de carga USB correcto para su dispositivo, conéctelo al puerto USB tipo A en la parte posterior de la bocina. Conecte el extremo más pequeño a su dispositivo portátil.



• Once connected, you should see the charging indicator activate on your portable device.

• Una vez conectado, debe ver que el indicador de carga de su dispositivo portátil indica que está recibiendo una carga.

Note: Charging and power ports are located behind the waterproof cover on the back of the Xpedition 4.

Los puertos de carga y de alimentación se encuentran detrás de la cubierta impermeable en la parte posterior de la bocina.

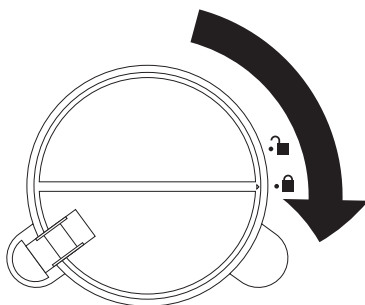
Weather Resistance (IP67 Rating)

The Altec Lansing Xpedition 4 is IP67 rated, meaning it is dust resistant and capable of being submerged for up to 30 minutes at a depth of 1 meter. However, that doesn't mean your new speaker is indestructible. Other factors – like the corrosiveness of the liquid due to it containing salt or chlorine – can affect the overall integrity of the enclosure. If your Xpedition 4 is exposed to any substance other than clean water, it's a good idea to clean the unit with a clean, soft cloth. Give the unit time to dry completely before connecting it back to mains power.

La bocina tiene una clasificación IP67, lo que significa que es resistente al polvo y puede sumergirse durante 30 minutos a una profundidad de 1 metro. Sin embargo, eso no significa que su nueva bocina sea indestructible. Otros factores, como la corrosividad del líquido debido a que contienen sal o cloro, pueden afectar la integridad general del recinto. Si su Xpedition 4 está expuesta a cualquier sustancia que no sea agua limpia, es una buena idea limpiar la unidad con un paño limpio y suave. Dele tiempo a la unidad para que se seque completamente antes de volver a conectarla a la red eléctrica.

Note: The unit is only protected when the rear plastic port cover is properly in place, if not, the unit is not sealed from damage and care should be taken to protect it from any exposure to liquids or dust.

La bocina solo está protegida cuando la tapa del puerto de plástico trasero está colocada correctamente, de lo contrario, la unidad no está sellada contra daños y se debe tener cuidado de protegerla de cualquier exposición a líquidos o polvo.



Responsible Party Name:

Innovative Concepts & Designs

Company address:107 Trumbull St-F8 2nd Floor
Elizabeth, NJ, 07206 USA**FCC ID:** 2AE6G-ALP-XP**FCC Compliance Statement**

This device complies with Part 15 of the FCC Rules.

The operation is subject to the following two conditions:

- (1) This device may not cause harmful interference, and
- (2) This device must accept any interference received, including interference that may cause undesired operation.

Note: This equipment has been tested and found to comply with the limits for a class B digital device, pursuant to Part 15 of the FCC Rules. These equipment generates uses and can radiate radio frequency energy and if not installed and used in accordance with the instructions, may cause harmful interference to radio communications. However, there is no guarantee that interference will not occur in a particular installation. If this equipment does cause interference to radio or television reception, which can be determined by turning the equipment off and then on, the user is encouraged to try to correct the interference by one or more of the following measures:

- Reorient or relocate the receiving antenna.
- Increase the separation between the equipment and receiver.
- Connect the equipment to a different outlet so that the equipment and receiver are on different branch circuits.
- Consult the dealer or an experienced radio/TV technician for help.

Caution: Any changes or modifications to this device not explicitly approved by manufacturer could void your authority to operate this equipment.

The device has been evaluated to meet general RF exposure requirement. The device can be used in portable exposure condition without restriction.

Caution

- All operating instructions should be read before using this equipment.
- To reduce the risk of electrical shock, do not open the unit. There are **no user replaceable parts inside**. Please refer servicing to a qualified Altec Lansing service technician. Do not attempt to return this equipment to your dealer.
- Do not expose this unit to direct sunlight or to a heat source such as a radiator or stove.
- This unit should be cleaned only with a damp cloth. Avoid solvents or other cleaning detergents.
- When moving this equipment, it should be placed in its original carton and packaging. This will reduce the risk of damage during transit.
- **Do not expose this unit to heat.**
- **Do not use cleaning products or lubricants on the controls or switches.**

Precautions***Please read carefully before proceeding***

Always follow the basic precautions listed below to avoid the possibility of serious injury or even death from electrical shock, short-circuiting, damages, fire, or other hazards.

• Read, Follow, and Retain All Instructions:

All the safety and operating instructions should be read before the product is operated.

• Cleaning: The product should be cleaned only with a polishing cloth or a soft dry cloth.

Never clean with furniture wax, benzene, or other volatile liquids since they may damage the cabinet.

• Do Not Open:

Do not open the device or attempt to disassemble the internal parts or modify them in any way. The device contains no user-serviceable parts. If it should appear to be malfunctioning, discontinue use immediately and have it inspected by qualified Altec Lansing service personnel.

• Replacement Parts: When replacement parts are required, be sure the service technician has used replacement parts specified by the manufacturer or have the same characteristics as the original part. Unauthorized substitutions may result in fire, electric shock, or other hazards.

• Positioning and Transportation:

- Before moving the unit, remove all plugged cables.
- Do not use the speaker's handles for suspended installation. Doing so can result in damage or injury.
- Do not expose the device to excessive dust or vibrations, or extreme cold or heat (such as in direct sunlight, near a heater) to prevent the possibility of panel disfiguration or damage to the internal components.
- Do not place the device in an unstable position where it may accidentally fall over.
- **Connections:** Before connecting the device to other devices, turn off the power for all devices. Before turning the power on or off for all devices, set all volume levels to minimum.

Warranty and Repair:

All Altec Lansing products are designed and manufactured to the highest standards in the industry. With proper care and maintenance, your product will provide years of reliable service.

Limited Warranty

- A.** Altec Lansing guarantees its products to be free from defects in materials and workmanship for one (1) year from the original purchase date.
 - B.** This limited warranty does not cover damage or failure caused by abuse, misuse, abnormal use, faulty installation, improper maintenance or any repairs other than those provided by Altec Lansing.
 - C.** There are no obligations of liability on the part of Altec Lansing for consequential damages arising out of or in connection with the use or performance of the product or other indirect damages with respect to loss of property, revenues, of profit, or costs of removal, installation, or reinstallation. All implied warranties for Altec Lansing, including implied warranties for fitness, are limited in duration to one (1) year from the original date of purchase, unless otherwise mandated by local statutes.
-

Return/Repair

- A.** In the U.S.A., please call our helpful Customer Service Representatives at (888) 703-2307, and they will be happy to give you a Return Authorization Number (RA#) and the address of an authorized service center closest to you.
 - B.** After receiving an RA#, include a copy of the original sales receipt, with defective product and a description of the defect. Send by insured freight to: Altec Lansing and use the address provided by your customer service representative. Your RA# must be written on the outside of the package, or processing will be delayed indefinitely!
 - C.** Service covered under warranty will be paid for by Altec Lansing and returned to you. For non-warranted products, Altec Lansing will repair your unit after payment is received. Repair charges do not include return freight. Freight charges will be added to the repair charges.
 - D.** On warranty service, you pay for shipping to Altec Lansing, we pay for return shipping within the continental United States. Alaska, Hawaii, Puerto Rico, Canada, Bahamas, and the Virgin Islands will be charged for freight.
 - E.** Please allow 2-3 weeks for return of your product. Under normal circumstances your product will spend no more than 10 working days at Altec Lansing. We are not responsible for shipping times.
-

Parts of the design of this product may be protected by worldwide patents. Information in this manual is subject to change without notice and does not represent a commitment on the part of the vendor. Altec Lansing shall not be liable for any loss or damage whatsoever arising from the use of information or any error contained in this manual. No part of this manual may be reproduced, stored in a retrieval system or transmitted, in any form or by any means, electronic, electrical, mechanical, optical, chemical, including photocopying and recording, for any purpose without the express written permission of Altec Lansing. It is recommended that all maintenance and service on this product is performed by Altec Lansing or its authorized agents. Altec Lansing will not accept liability for loss or damage caused by maintenance or repair performed by unauthorized personnel.

© 2018 AL Infinity, LLC. All rights reserved. ALTEC LANSING; HORN Design and related logos are registered trademarks of AL Infinity and used under license; Bluetooth logo is a registered trademark of Bluetooth SIG; The N-Mark is a trademark or registered trademark of NFC Forum, Inc. in the United States and in other countries; The Bluetooth range is affected by walls, obstructions, and movement. For optimal performance, place the product in the center of the room so it is unobstructed by walls, furniture, etc; Battery life may vary.

This device complies with Part 15 of the FCC rules. An operation is subject to the following two conditions:

- (1) this device may not cause harmful interference. and (2) this device must accept any interference received, including interference that may cause undesired operation.