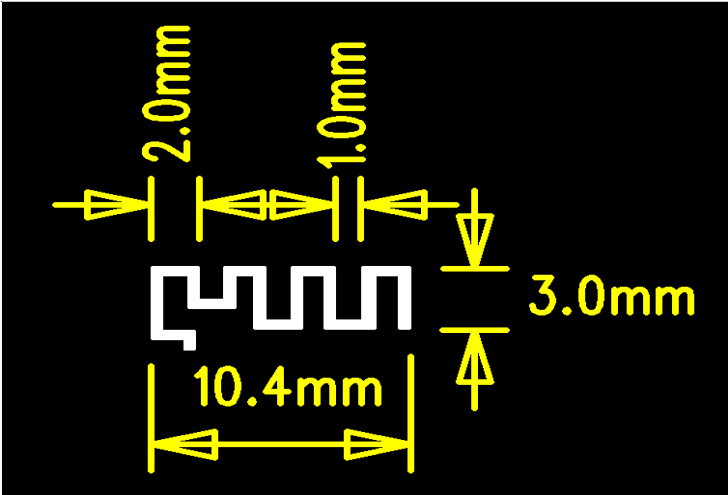


1. Antenna Description:

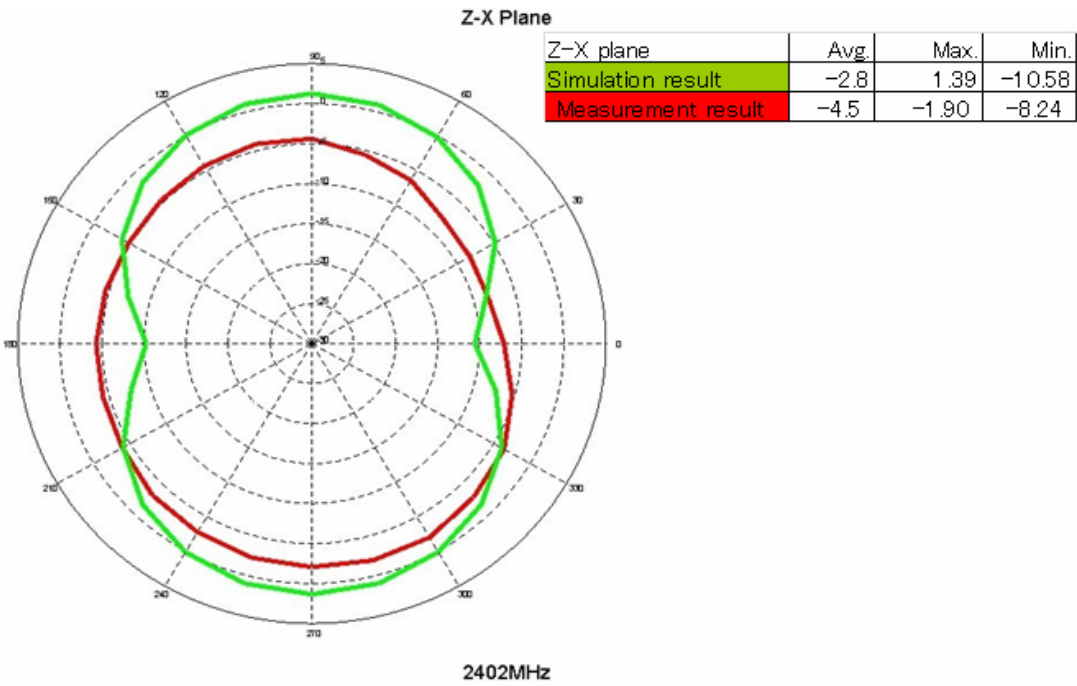
| | |
|-------------------|-------------------|
| Antenna plate | PCB Antenna |
| Antenna peak gain | 2.3 dBi |
| Frequency range | 2.402GHz~2.480GHz |
| Connect type | Direct Connect |

2. Picture of antenna

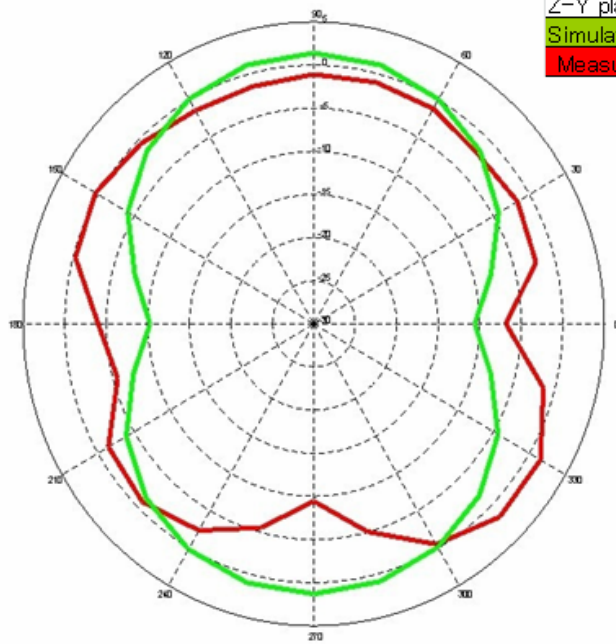


3. Antenna Radiation Pattern

Radiation pattern @2.402GHz



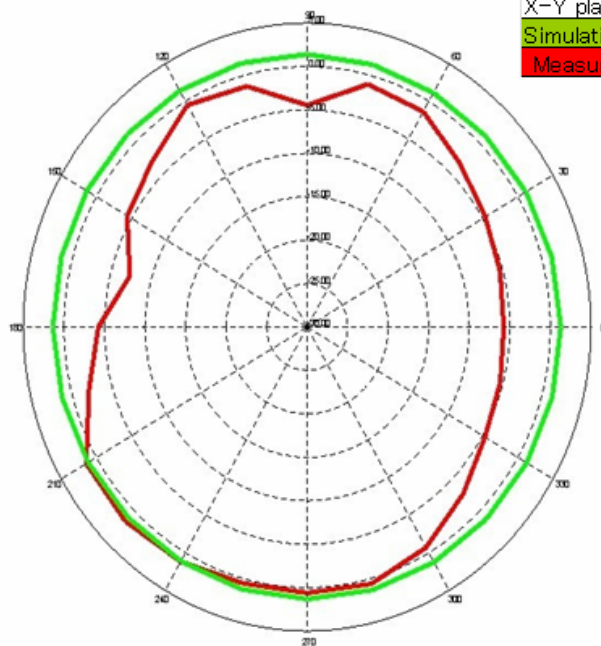
Z-Y Plane



| Z-Y plane | Avg. | Max. | Min. |
|--------------------|------|------|--------|
| Simulation result | -2.8 | 1.45 | -10.58 |
| Measurement result | -2.1 | 1.7 | -9.42 |

2402MHz

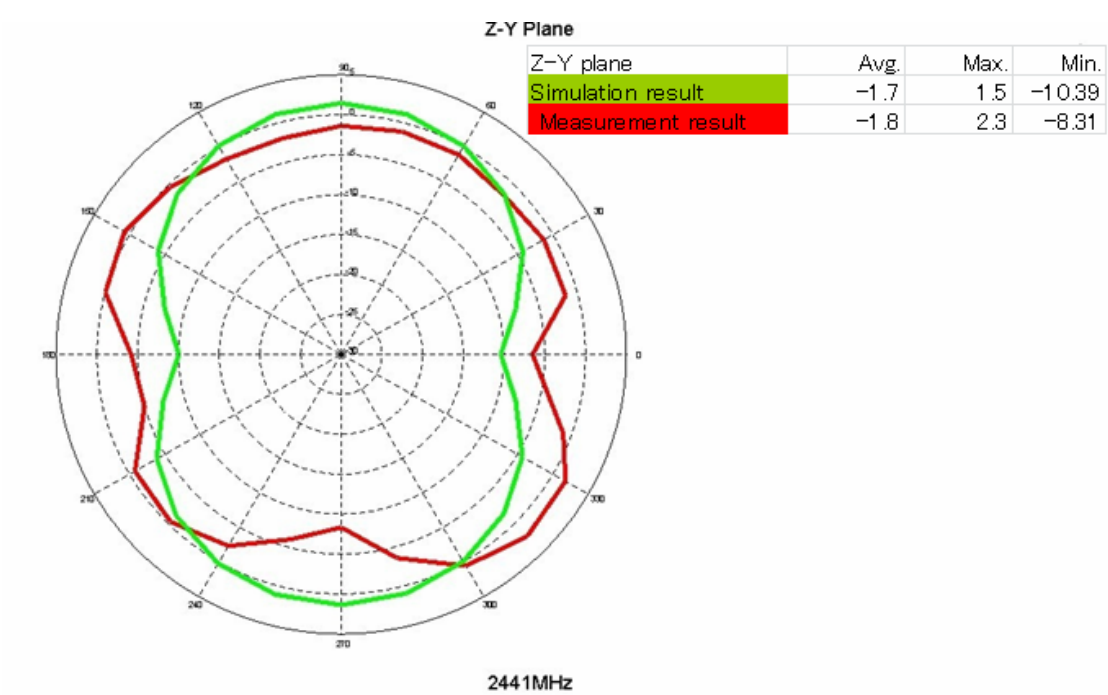
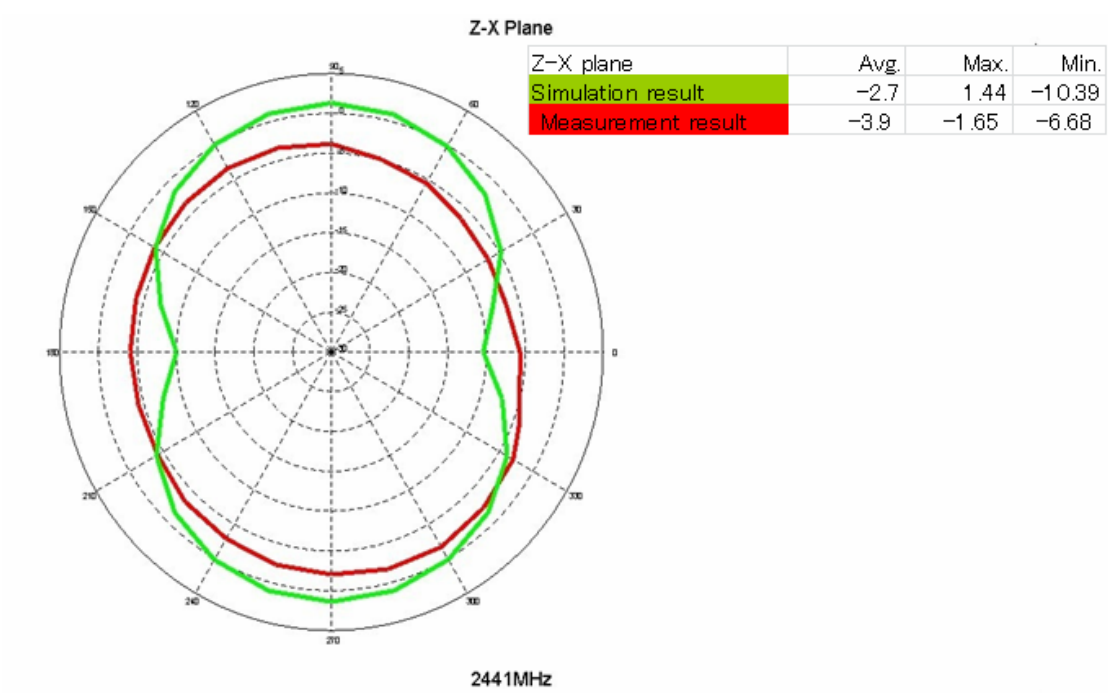
X-Y Plane

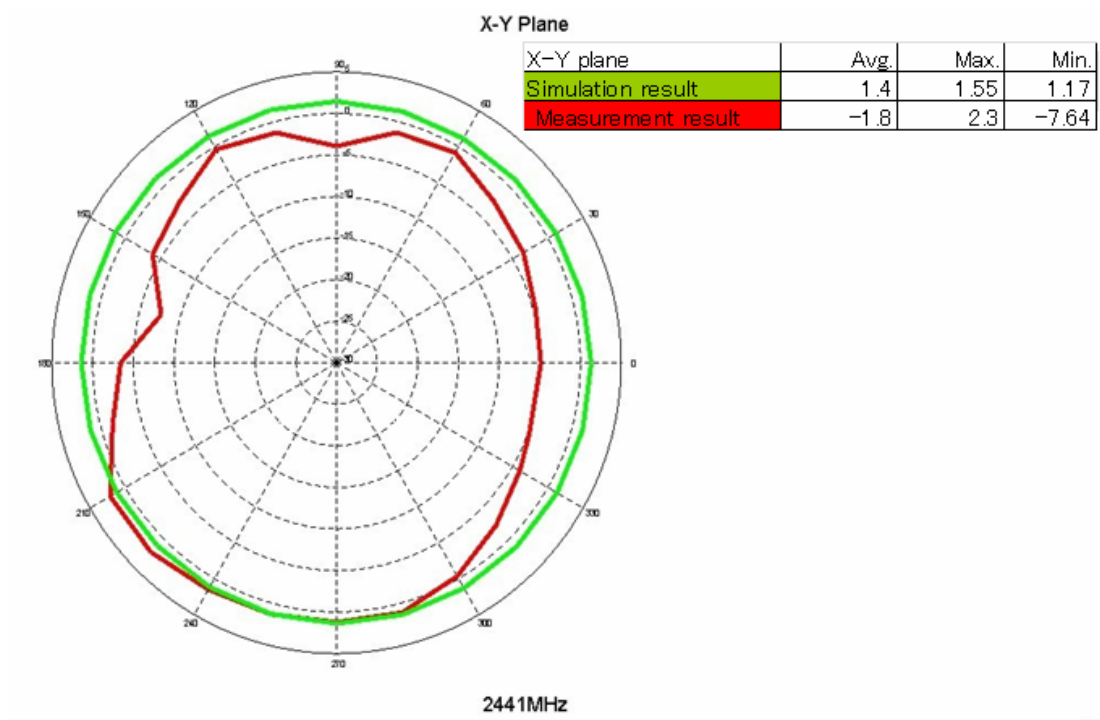


| X-Y plane | Avg. | Max. | Min. |
|--------------------|------|------|-------|
| Simulation result | 1.3 | 1.5 | 1.15 |
| Measurement result | -2.3 | 1.7 | -7.34 |

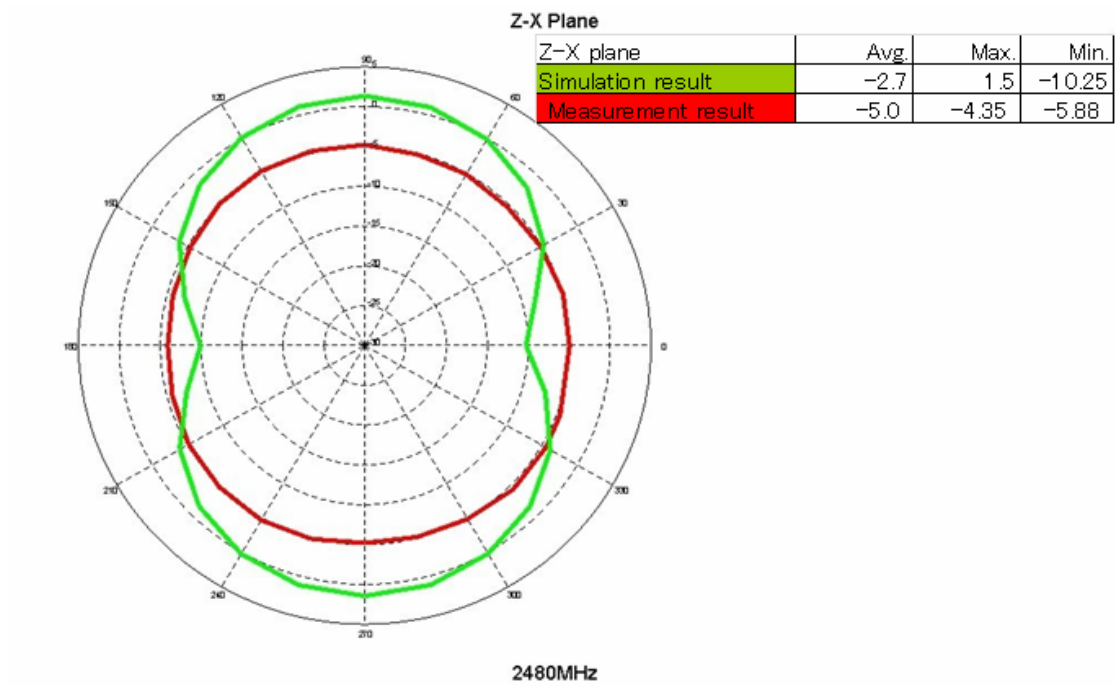
2402MHz

Radiation pattern @2.441GHz

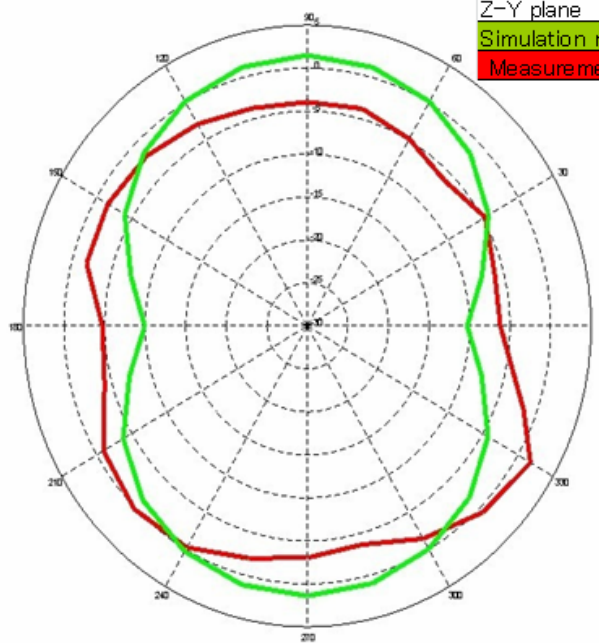




Radiation pattern @2.480GHz



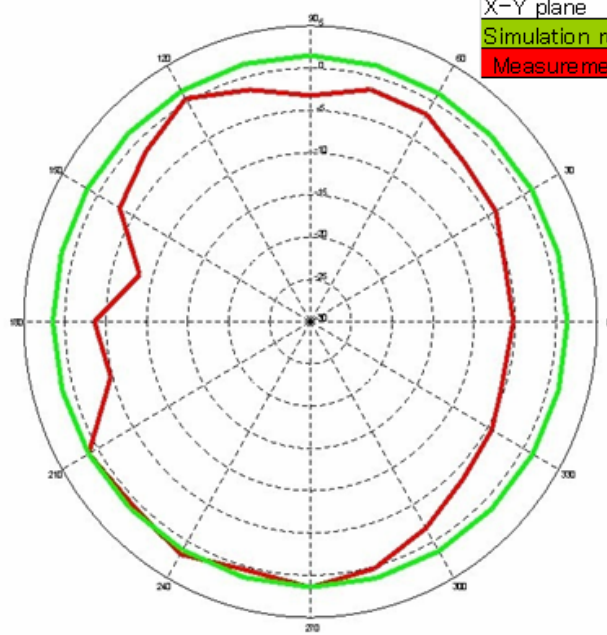
Z-Y Plane



| Z-Y plane | Avg. | Max. | Min. |
|--------------------|------|------|--------|
| Simulation result | -2.7 | 1.55 | -10.25 |
| Measurement result | -2.8 | 1.82 | -6.16 |

2480MHz

X-Y Plane



| X-Y plane | Avg. | Max. | Min. |
|--------------------|------|------|-------|
| Simulation result | 1.4 | 1.61 | 1.22 |
| Measurement result | -2.3 | 1.82 | -8.38 |

2480MHz