

User Manual

Model: C1020W
10000mAh MagSafe Power Bank with Built-in Cable
for iPhone 15/14/13/12 and subsequent series



What's Included



Welcome Guide x1

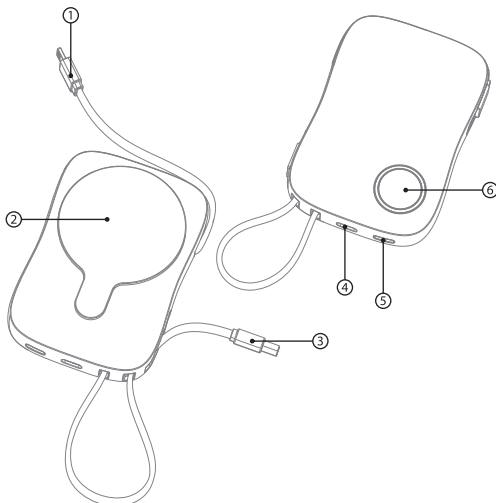


Magnetic Power Bank x1

Specifications

Battery Capacity	10000mAh
Type C Input	5V/3A, 9V/2A
Type C Output	5V/3A, 9V/2.22A, 12V/1.67A
TYPE-C Cable Output	5V/3A, 9V/2A, 12V/1.5A
Lightning Cable Output	5V/2A
Wireless Output	5W, 7.5W, 10W, 15W(Max)
Simultaneous Output	5V/3A
Product size	70*100*21.8 mm
Weight	201g

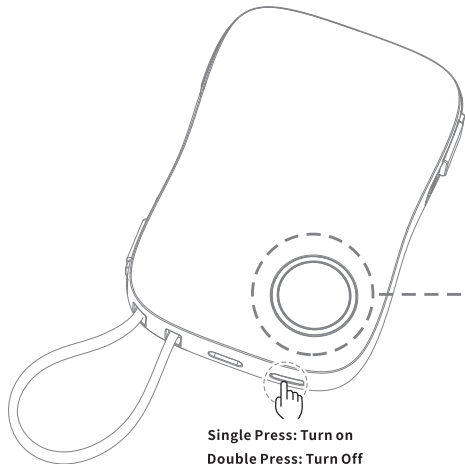
Product Structure



- 1 Lightning Cable
- 2 Magnetic Wireless Charger
- 3 TYPE-C Cable
- 4 Pass-through charging via Type C Input/Output
- 5 Switch
- 6 Indicator

Switch

When your phone don't need to charge, Just double quick press the switch to power off.



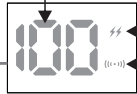
Digital Display Screen

Digital Display

Fully Charged	100
Charging	Real-time Power
Low Power	Number Flashes

Fast Charging Indicator

Fast Charging Mode	⚡ ON
No Fast Charging Mode	⚡ OFF
2 or More Devices Charged Simultaneously	⚡ OFF



Wireless Charging Status Indicator

Standby Mode	[(+)] OFF
Wireless Charging Mode	[(+)] ON
Fully Charged Mode	[(+)] ON
FOD Mode	[(+)] Flashing

Tips:

1. If the wireless charging mark off, please kindly check whether there is magnet or metal element to effect.
2. If wired charging, there is not wireless charging mark on the screen.
3. When start to charge, it would not show fast charging mark immediately. It need several seconds to change to fast charging mode.
4. When the power bank only charge 1 device, it's fast charging. If charge 2 or more devices simultaneously, the max output power 5V/3A, not fast charging.

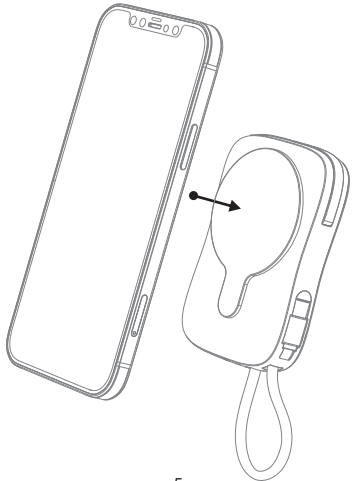
How To Use

Wireless Charging Operation

Please fit the product with the back of your iPhone (12,13,14,15 and subsequent series or AirPods3) or other wireless charging phone (which with MagSafe-compatible ring attached), it will charge your phone automatically via the built-in magnetic wireless charging Max to be 15W. iPhone series is 7.5W due to iPhone's restrict.

Note:

1. The magnetic wireless power bank is mainly used for iPhone 12, iPhone13, iPhone14, iPhone15 and subsequent series, or phones with MagSafe-compatible ring attached. (Please note some of magnetic rings from the 3rd might not work). And it can also used with AirPods 3.
2. If your phone without MagSafe case, please charge it via the Type C output port or USB-A output port.



Charging The Power Bank

Please recharge the product when the power or battery is low.

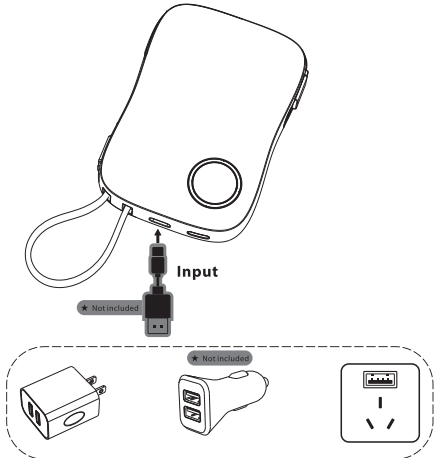
1. Using the included cable, connect the USB-A connector into QC/PD adapter and the Type-C connector to the input connector of the power bank.
2. During charging or complete, the battery power LED indicator will show charging status with the specific figures.

Pass Though Charging

You can put your iPhone 12/13/14/15 and subsequent series, AirPods 3 on the wireless charging area and connect this power bank to the power source (PD or QC Adapter). It will charge the power bank itself and your iPhone12/13/14/15 AirPods 3 at the same time.

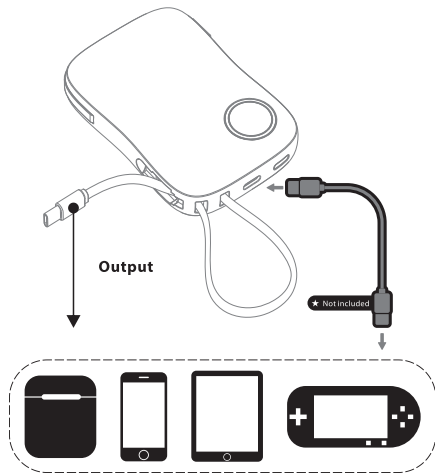
Note:

While pass though charging, the phone will be in fast charging and power bank is in slow charging. When phone is fully charged, the power bank is in fast charging mode.



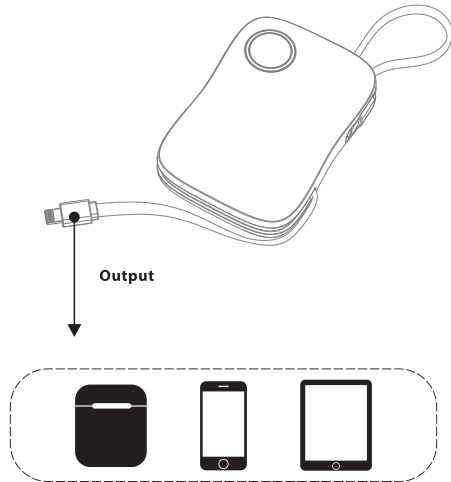
Type C & TYPE-C Cable Output Operation

1. Insert the Type C Connector to your Devices
2. Press the Switch Button
3. Start Charging



Lightning Cable Output Operation

1. Insert the Lightning connector to your Devices
2. Press the Switch Button
3. Start Charging



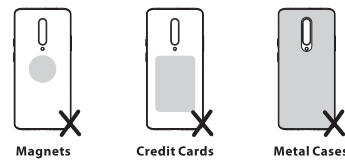
Warning

- Do not drop, misuse or apply excessive force to your power bank. Power banks contain batteries and a circuit board with fragile components that can be damaged if misused.
- If your power bank swells or bulges, stop use immediately and dispose of the power bank in an appropriate manner.
- Store power bank in a cool and dry place. Do not store in hot or humid environments.
- All power banks have safety power cut off features to stop overcharging & overheating.
- When charging a device the power bank may feel warm, this is a normal operating condition & should not be cause for concern.
- It's normal that this charger and your smart phone will be hot under operating conditions and it may be more hotter when charging and using at the same time (such as playing music).
- In normal conditions, battery performance will decline over several years.

Remarks

When your wireless power bank works improperly

1. Make sure there is no any clutter on the wireless power bank, such as magnet, metal, credit card and other foreign object.
2. When the wireless power bank is over-heating take your mobile device away from your wireless power bank and the power bank will stop charging automatically when over-heating. Please try charging again when the wireless power bank cooling down.



品名：	C1020W-说明书	规格：	100g 双胶纸 黑白 双面印刷 风琴折 尺寸：80x120 mm
版本：	20240104		
制作：	李志敏		
料号：			

This equipment has been tested and found to comply with the limits for a Class B digital device, pursuant to part 15 of the FCC Rules. These limits are designed to provide reasonable protection against harmful interference in a residential installation. This equipment generates, uses and can radiate radio frequency energy and, if not installed and used in accordance with the instructions, may cause harmful interference to radio communications. However, there is no guarantee that interference will not occur in a particular installation. If this equipment does cause harmful interference to radio or television reception, which can be determined by turning the equipment off and on, the user is encouraged to try to correct the interference by one or more of the following measures:

- Reorient or relocate the receiving antenna.
- Increase the separation between the equipment and receiver.
- Connect the equipment into an outlet on a circuit different from that to which the receiver is connected.
- Consult the dealer or an experienced radio/TV technician for help.

Caution: Any changes or modifications to this device not explicitly approved by manufacturer could void your authority to operate this equipment.

This device complies with part 15 of the FCC Rules. Operation is subject to the following two conditions: (1) This device may not cause harmful interference, and (2) this device must accept any interference received, including interference that may cause undesired operation.

The device has been evaluated to meet general RF exposure requirement.