

**EXHIBIT 9****Internal Photographs**

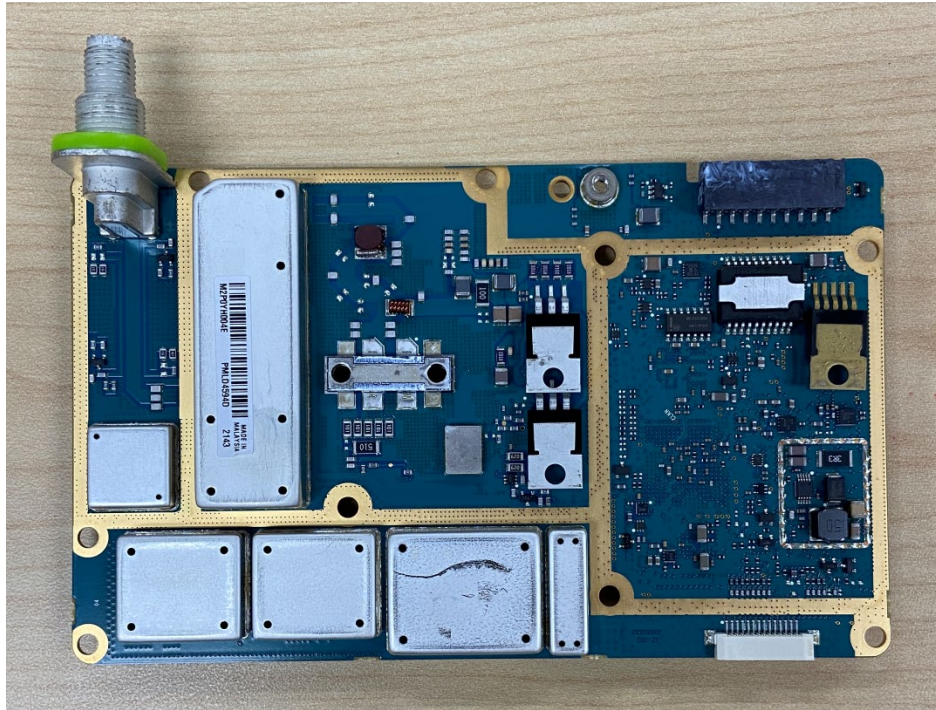
(Pursuant to FCC Part 2.1033(b)(7), 2.1033(c)(12) and RSP 100 Annex C)

The following photographs are attached.

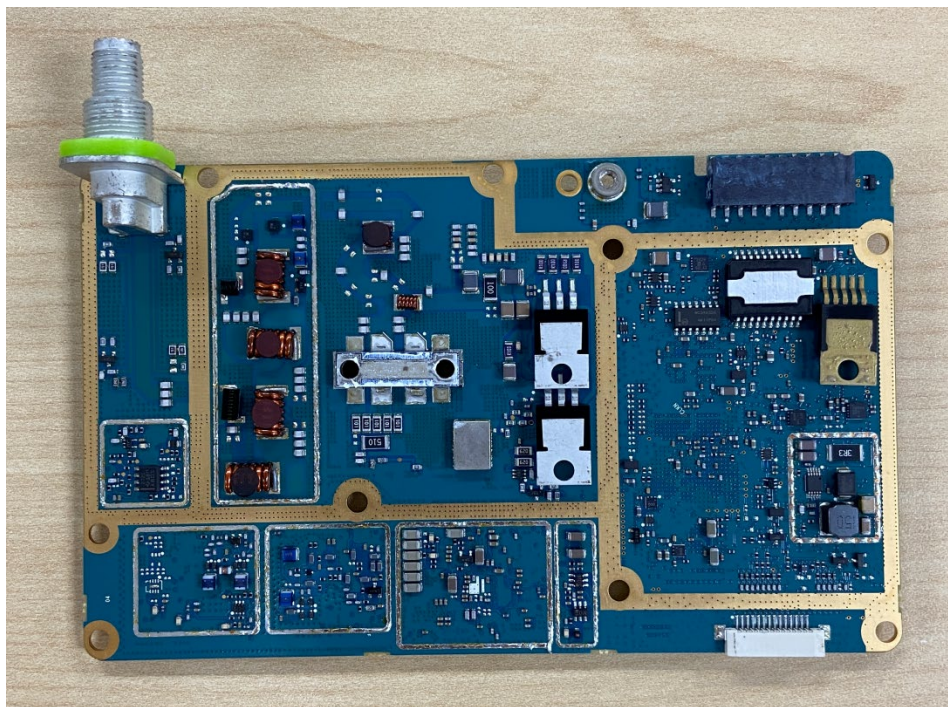
**Exhibit**

- |     |   |    |
|-----|---|----|
| 1.  | RF board <u>with</u> Shields (Top)                            | 9A |
| 2.  | RF board <u>without</u> Shields (Top)                         | 9B |
| 3.  | RF board <u>with</u> Shields (Bottom)                         | 9C |
| 4.  | RF board <u>without</u> Shields (Bottom)                      | 9D |
| 5.  | RF boards <u>with</u> chassis and control head (Top), Model 1 | 9E |
| 6.  | Chassis and control head (Bottom), Model 1                    | 9F |
| 7.  | RF boards <u>with</u> chassis and control head (Top), Model 2 | 9G |
| 8.  | Chassis and control head (Bottom), Model 2                    | 9H |
| 9.  | RF boards <u>with</u> chassis and control head (Top), Model 3 | 9I |
| 10. | Chassis and control head (Bottom), Model 3                    | 9J |
| 11. | GOB Board (Top)   | 9K |
| 12. | GOB Board with Shield (Bottom)                                | 9L |
| 13. | GOB Board without Shield (Bottom)                             | 9M |
| 14. | Exploded view of radio  | 9N |
| 15. | Exploded view of alphanumeric display control head            | 9O |
| 16. | Exploded view of numeric display control head                 | 9P |

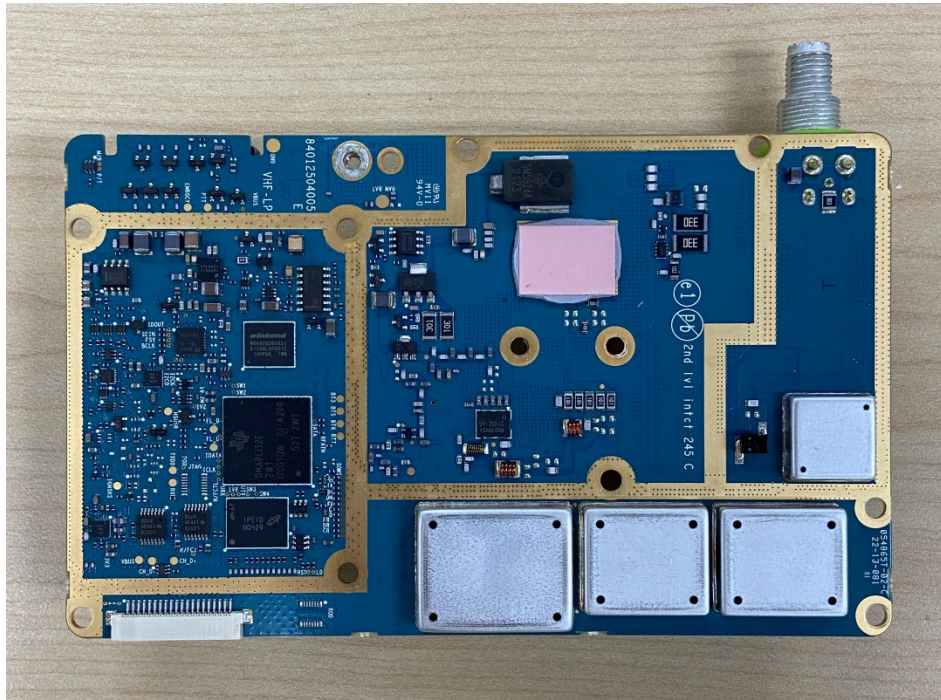
**Exhibit 9A - RF board with Shields (Top)**



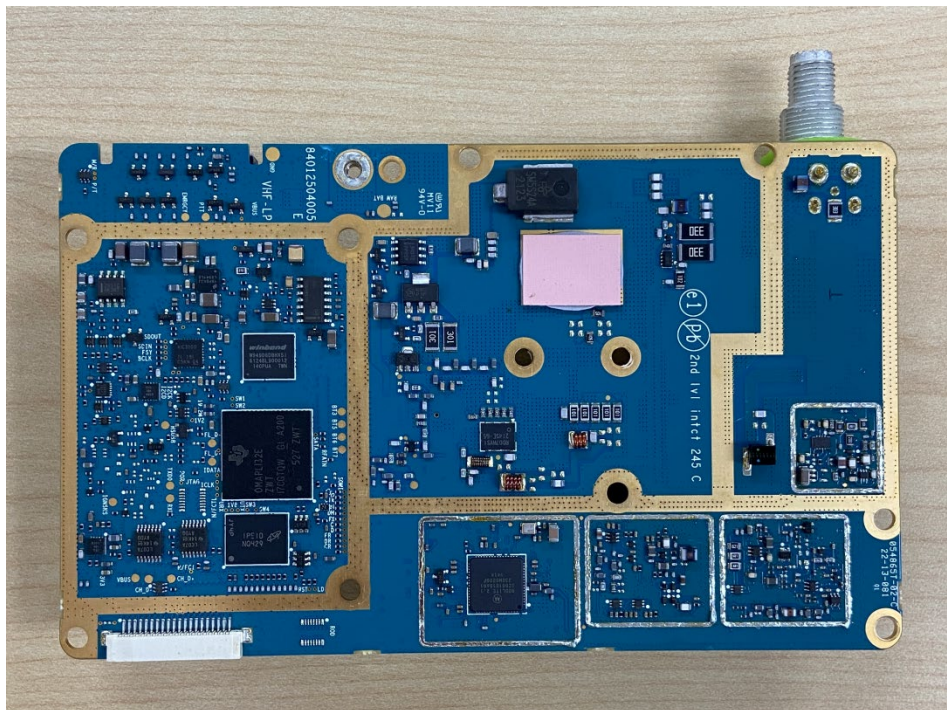
**Exhibit 9B - RF board without Shields (Top)**



**Exhibit 9C - RF board with Shields (Bottom)**



**Exhibit 9D - RF board without Shields (Bottom)**

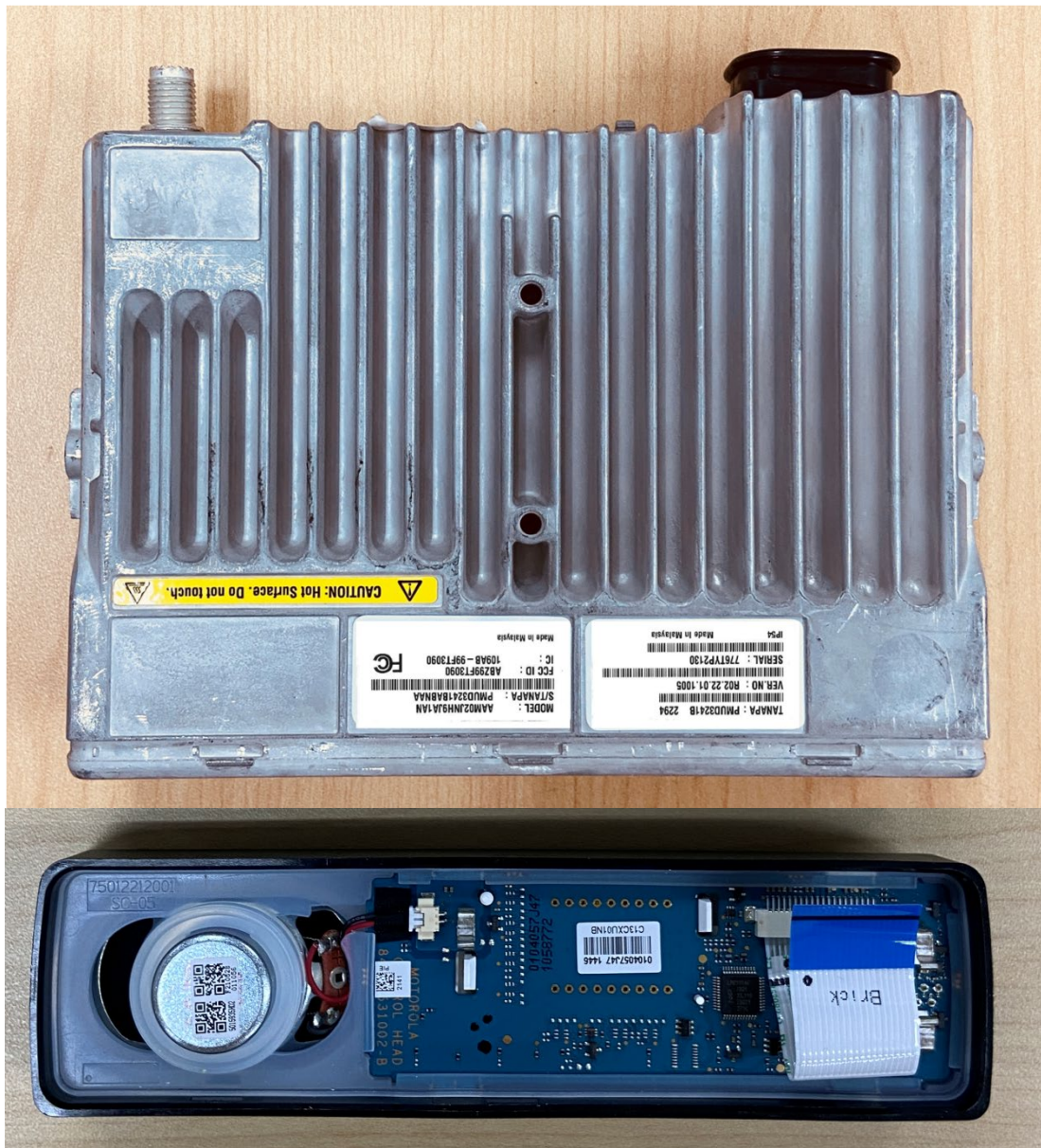


**Exhibit 9E - RF boards with chassis and control head (Top), Model 1**



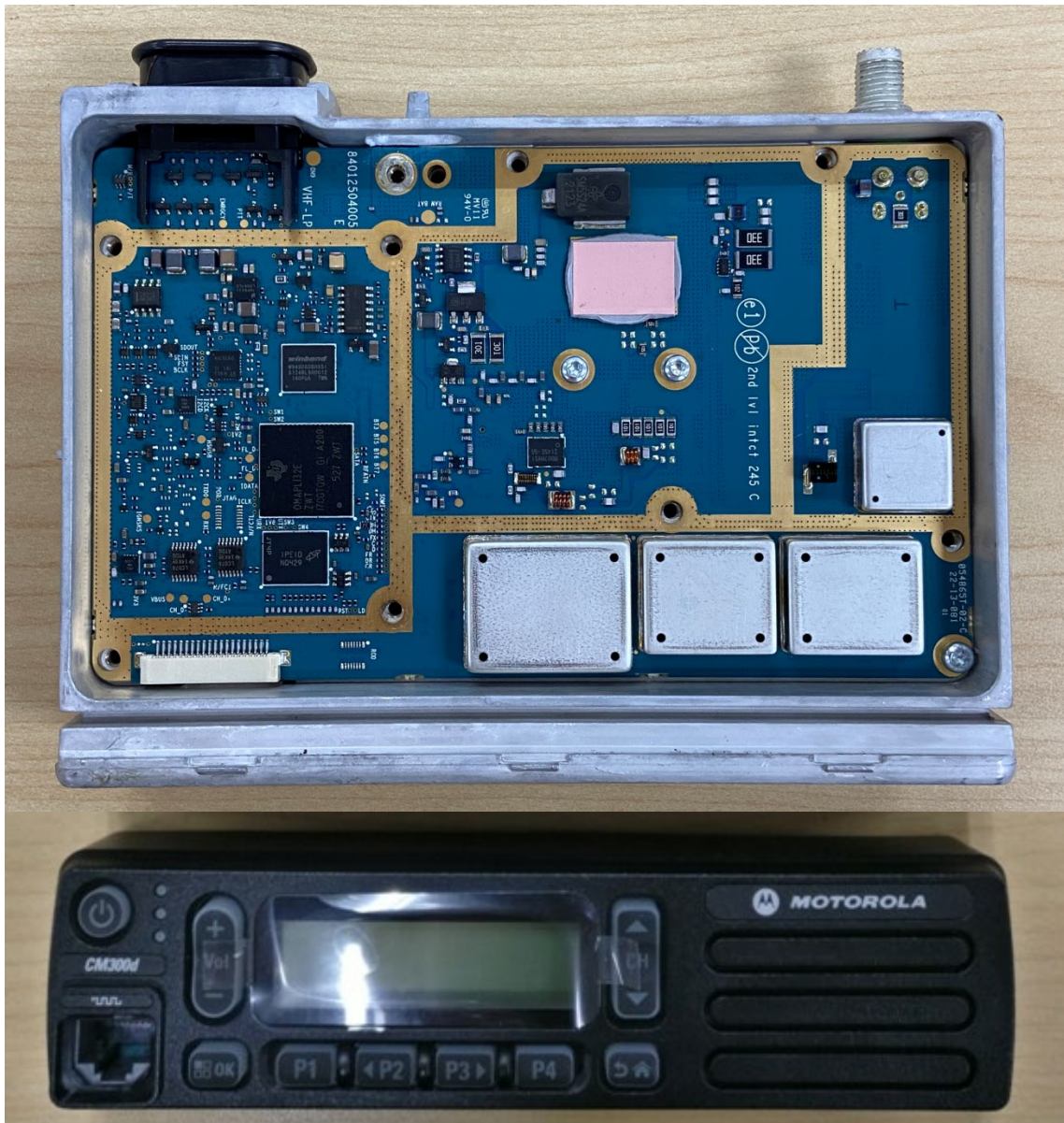
(XPR 2500)

**Exhibit 9F - Chassis and control head (Bottom), Model 1**



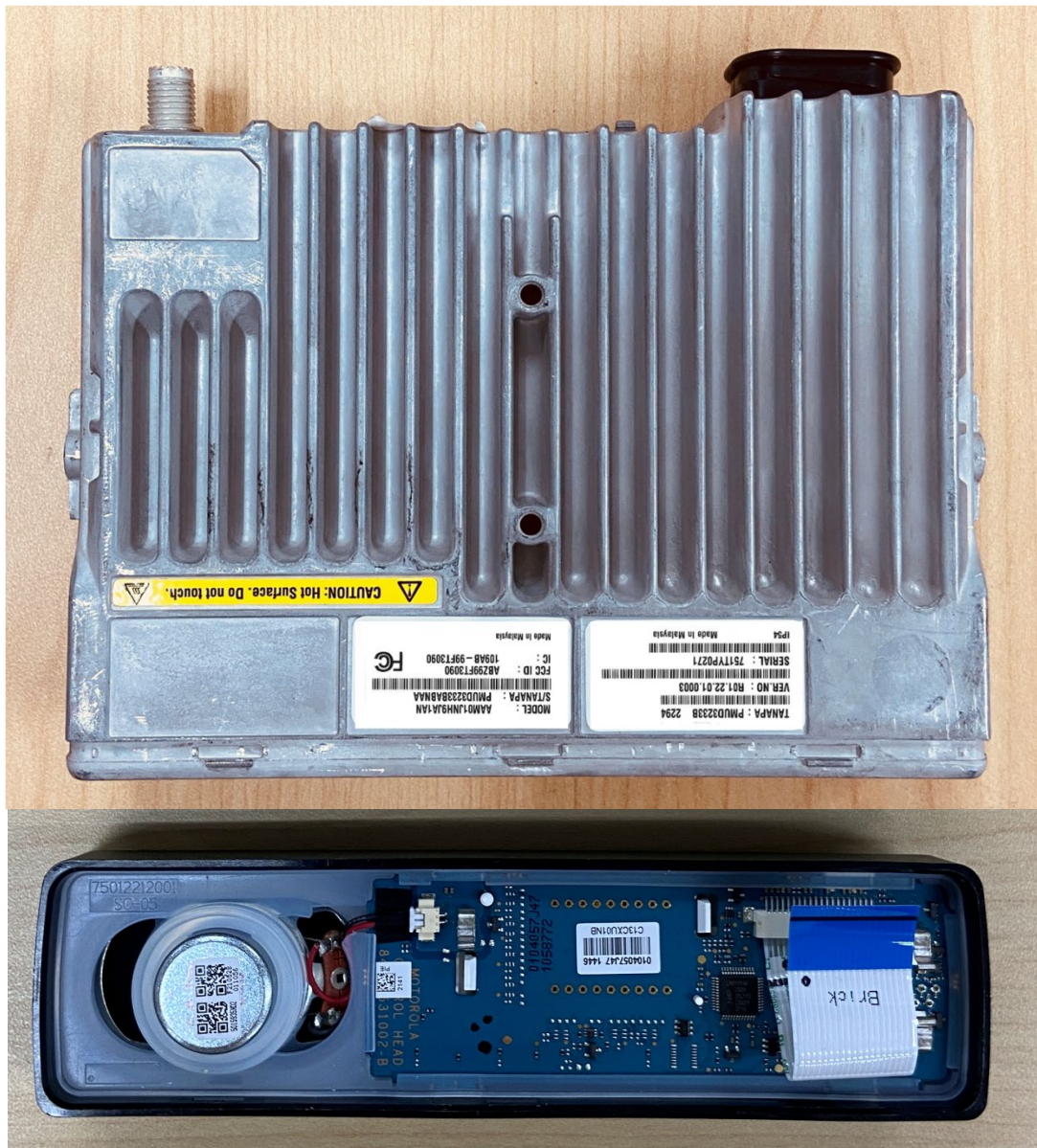
(XPR 2500)

**Exhibit 9G - RF boards with chassis and control head (Top), Model 2**



(CM300d)

**Exhibit 9H - Chassis and control head (Bottom), Model 2**



(CM300d)

**Exhibit 9I - RF boards with chassis and control head (Top), Model 3**



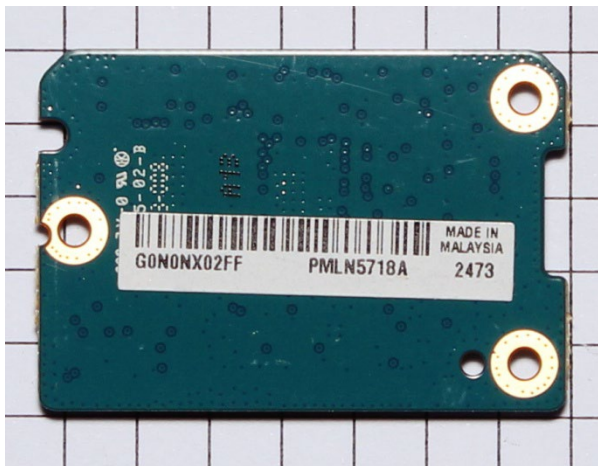
(CM200d)

**Exhibit 9J - Chassis and control head (Bottom), Model 3**

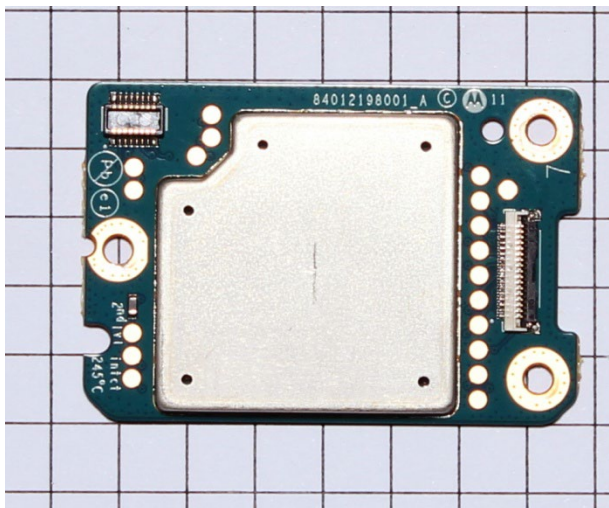


(CM200d)

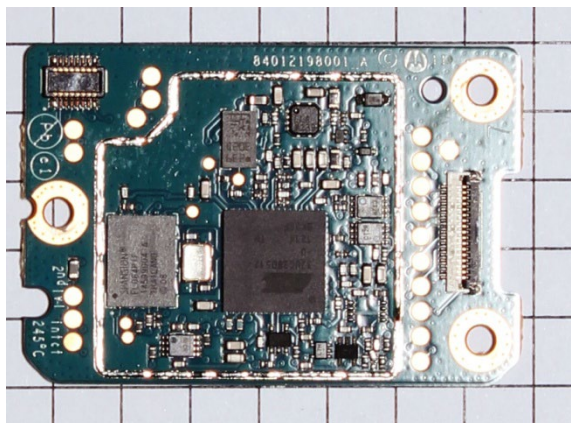
**Exhibit 9K - GOB board (Top)**



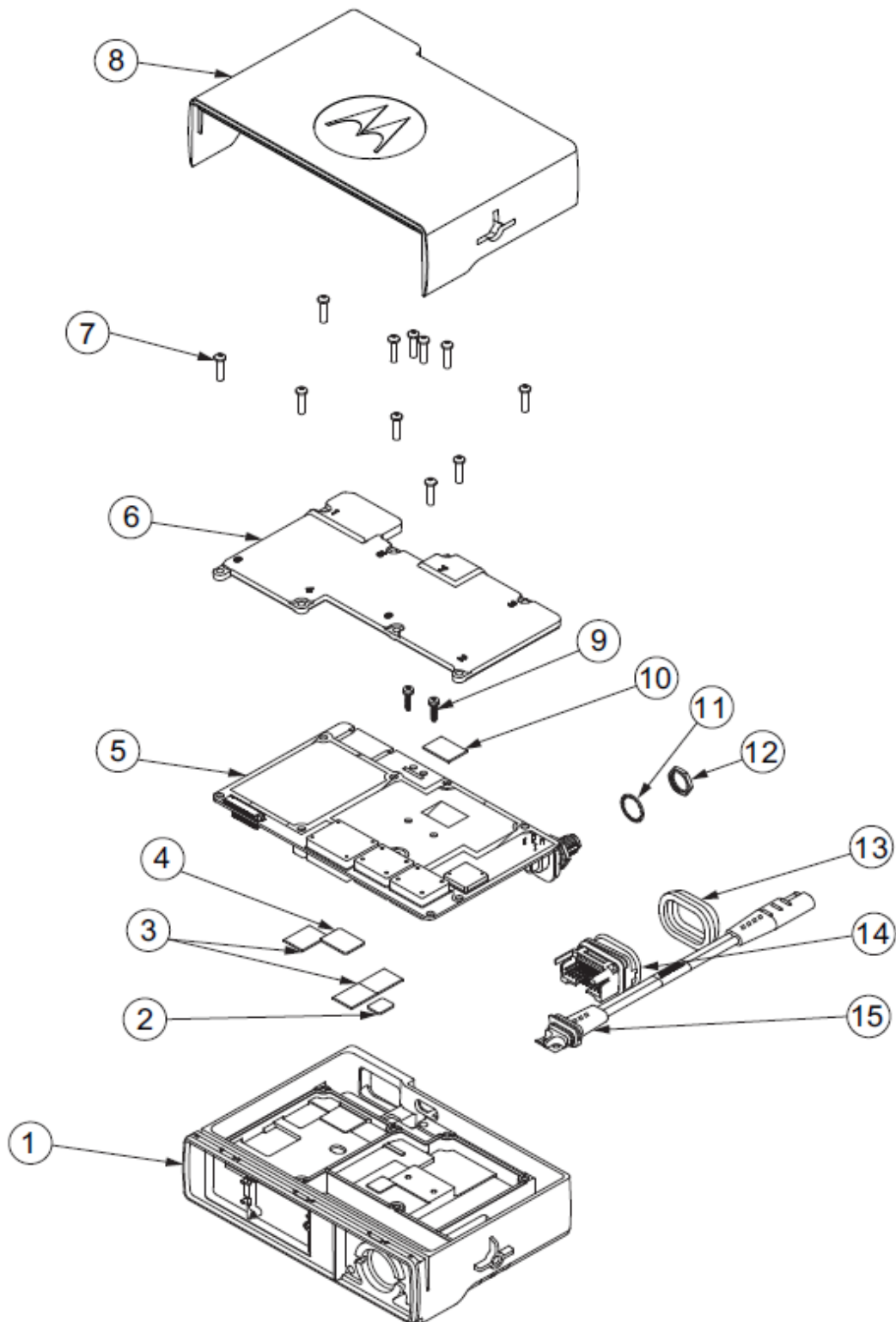
**Exhibit 9L - GOB board with Shield (Bottom)**



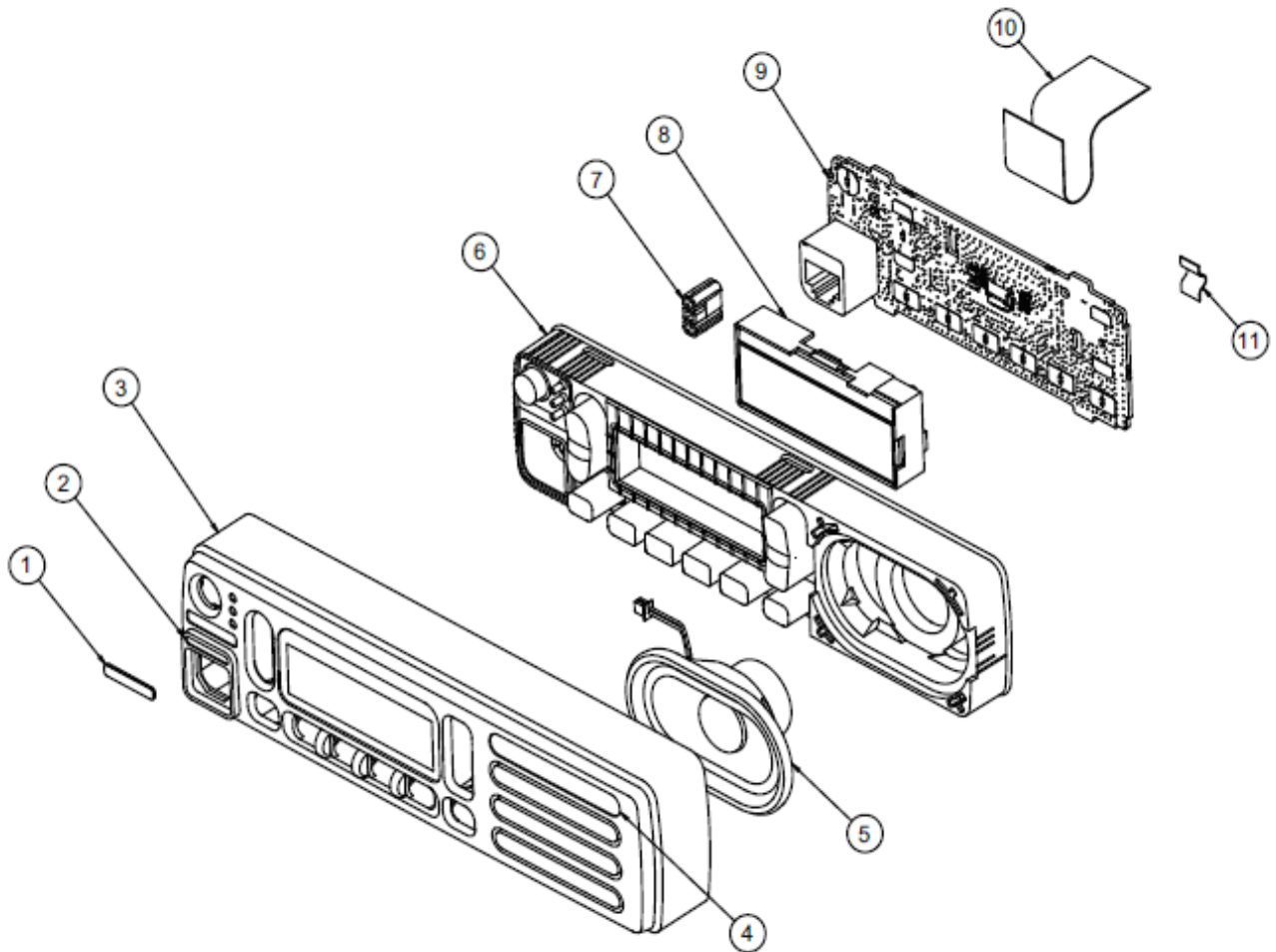
**Exhibit 9M - GOB board without Shield (Bottom)**



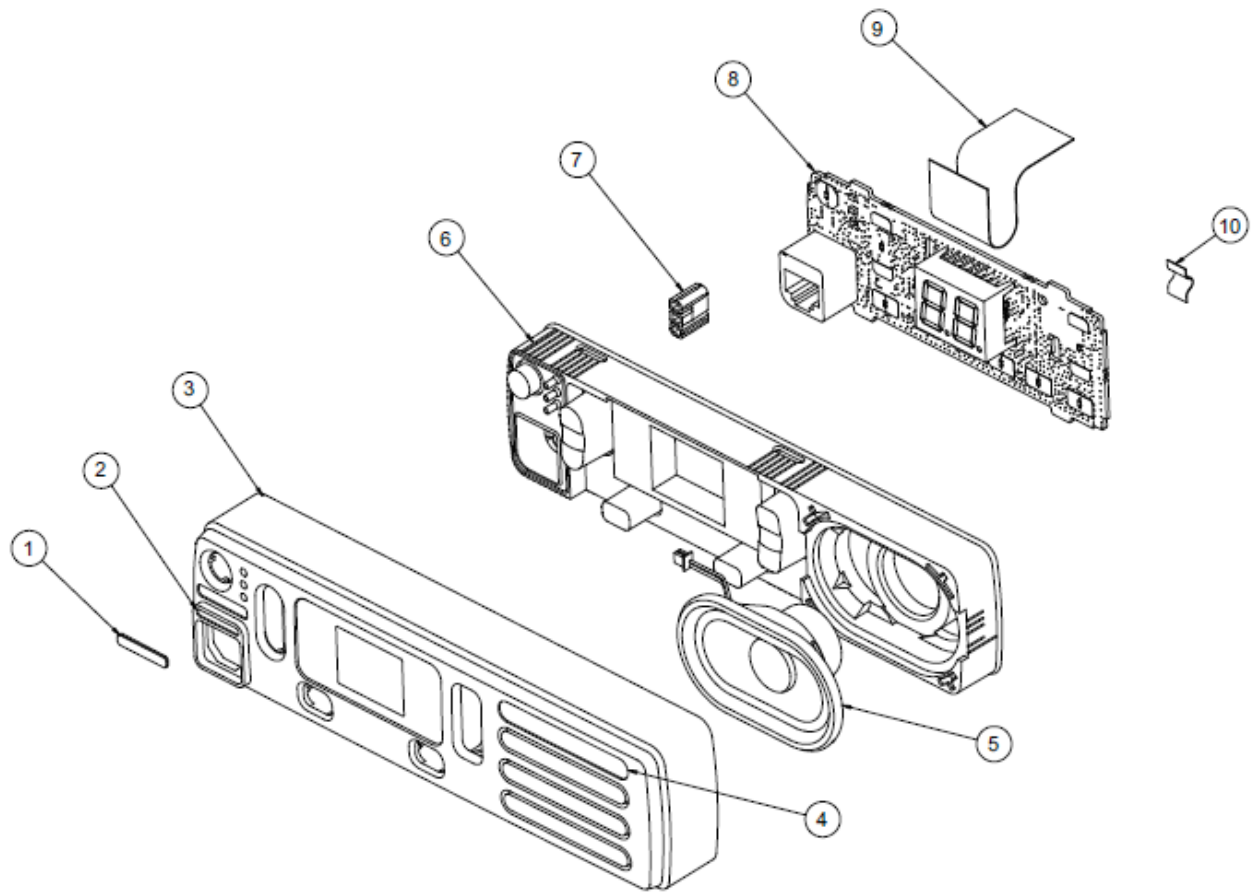
**Exhibit 9N - Exploded view of Radio**



**Exhibit 9O - Exploded view of Alphanumeric Display control head**



**Exhibit 9P - Exploded view of Numeric Display control head**



\*\*\* END \*\*\*