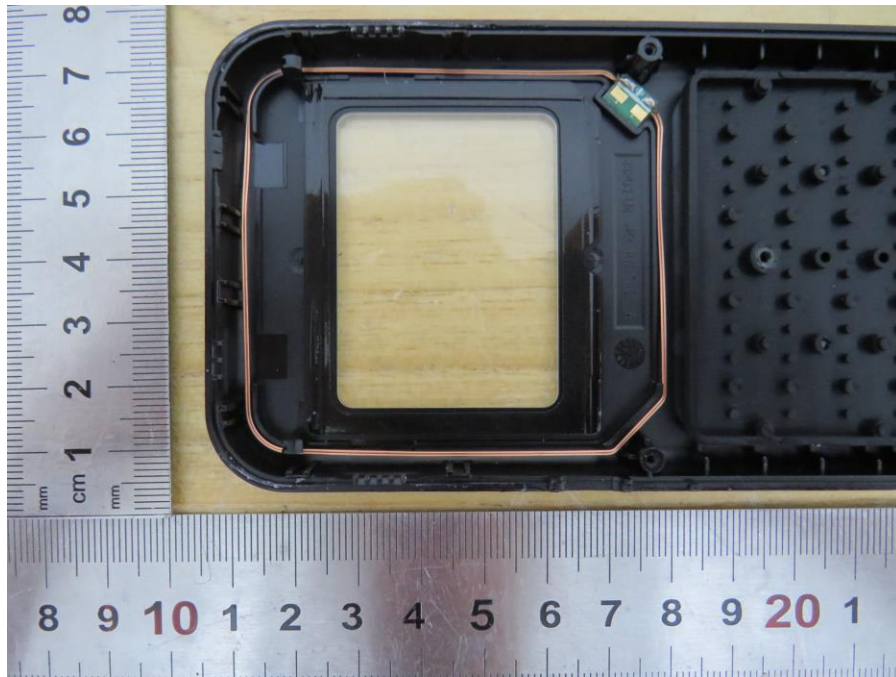




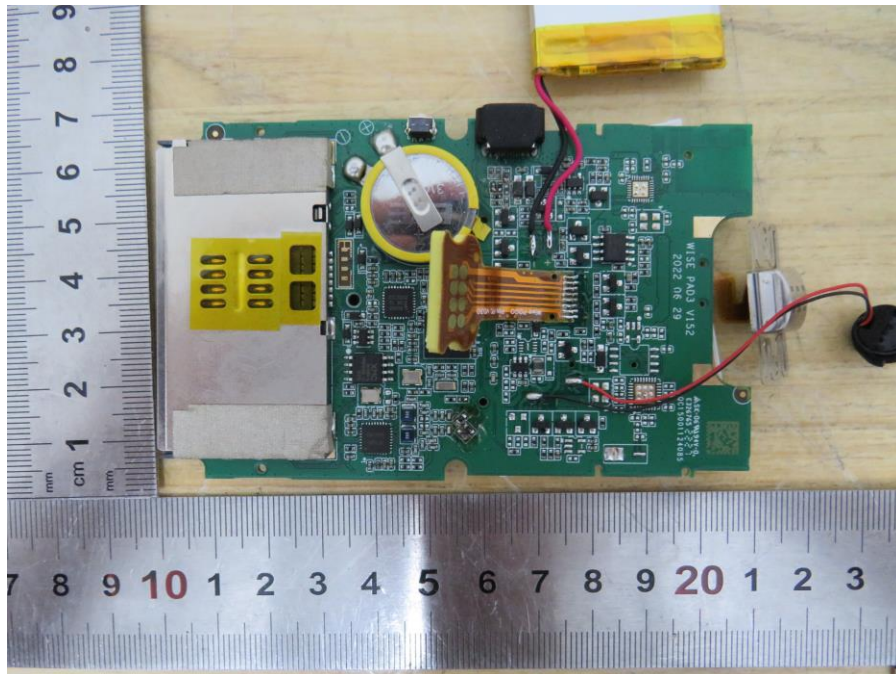
Internal Photographs

The image shows the internal components of a mobile phone, including a green PCB, a battery, and various connectors. The back cover is black and features an NFC antenna. A ruler is placed next to the components for scale.

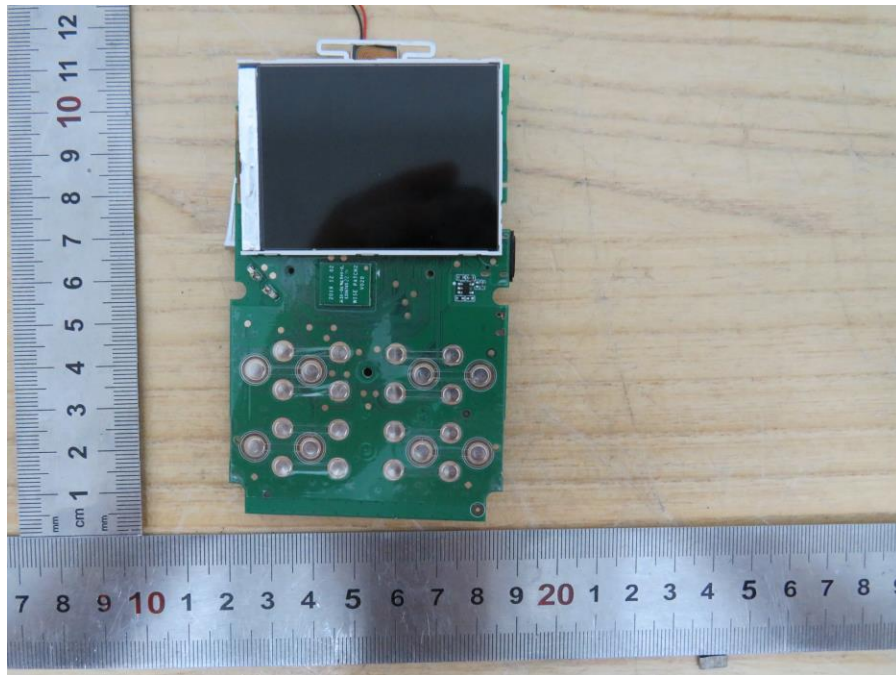
Internal View of EUT-3



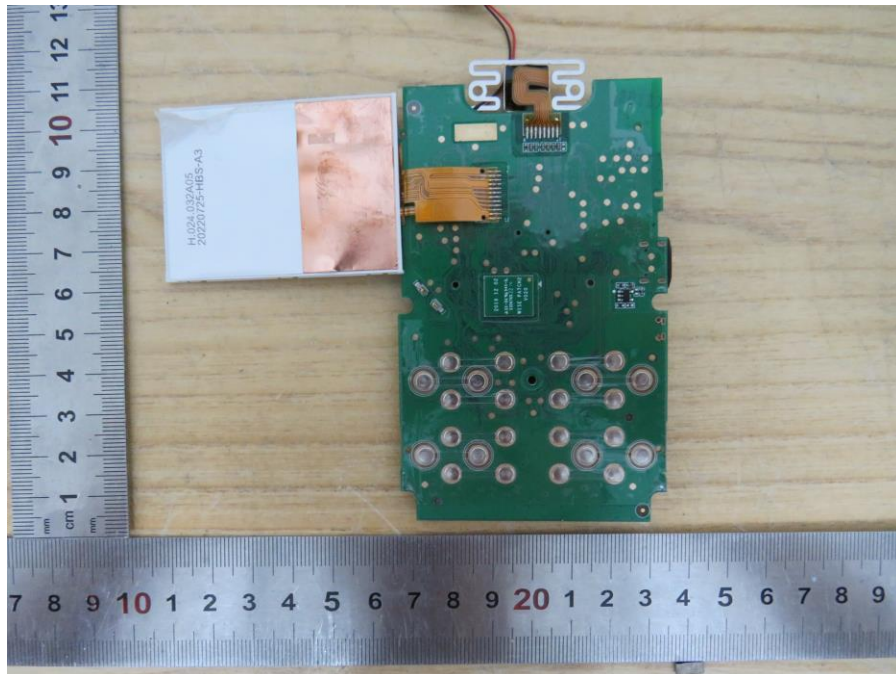
Internal View of EUT-4



Internal View of EUT-5



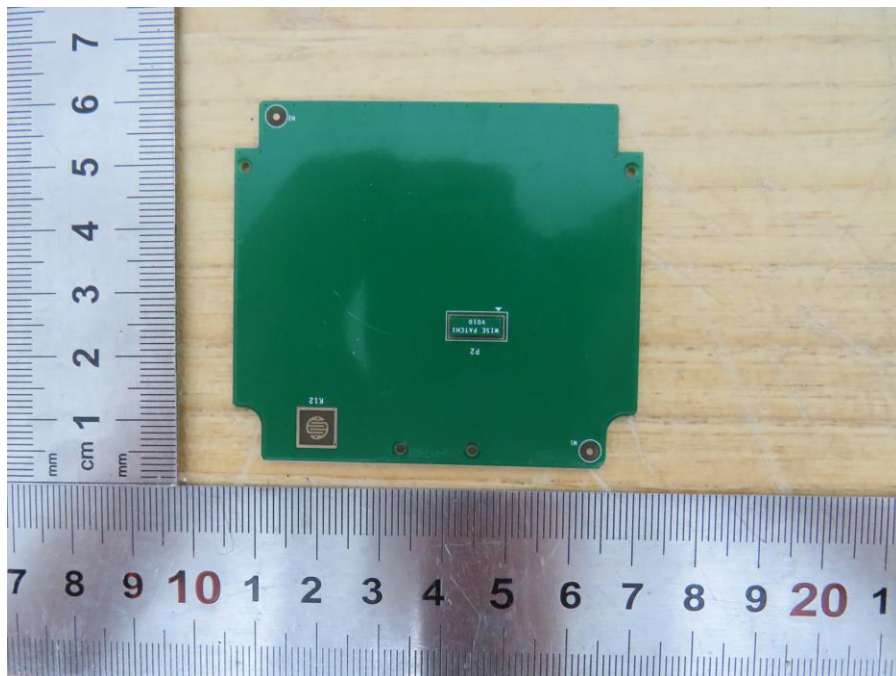
Internal View of EUT-6



Internal View of EUT-7



Internal View of EUT-8



Internal View of EUT-9

