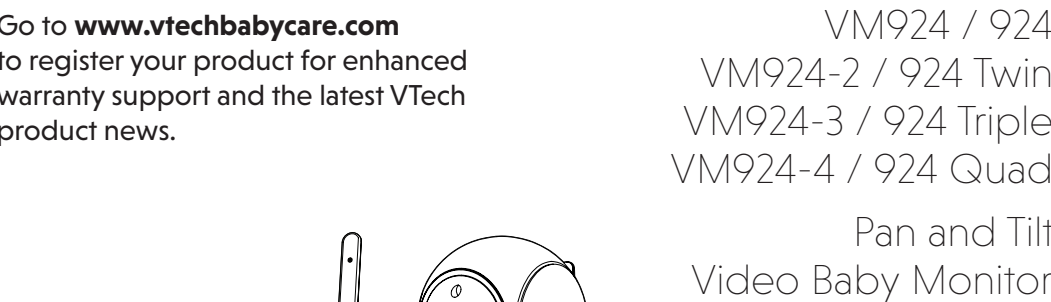


Go to [www.vtechbabycare.com](http://www.vtechbabycare.com) to register your product for enhanced warranty support and the latest Vtech product news.



## vtech®

### Quick start guide

#### TECHNICAL SPECIFICATIONS

Frequency control	Crystal controlled PLL synthesizer
Transmit frequency	Baby unit: 2405 - 2475 MHz Parent unit: 2405 - 2475 MHz
Channels	32
LCD	5" Color LCD (WQVGA 480x272 pixel)
Nominal effective range	Maximum power allowed by FCC and IC. Actual operating range may vary according to environmental conditions at the time of use.
Power requirements	Parent unit: 3.7V 5000mAh, 18.5Wh Lithium-ion battery Baby unit power adapter: Output: 5V DC @ 1A Parent unit power adapter: Output: 5V DC @ 2A



#### BASIC OPERATION - PARENT UNIT

**Use the menu**

Press **≡** to enter the menu, choose a menu item, or save a setting. You can use the parent unit for advanced settings or operations, such as to play or stop the baby unit lullaby, or to adjust the baby unit sound sensitivity.

While in the menu:

- Press **<** or **>** to scroll among the menu options.
- Press **≡** to select an item, or to save a setting.
- Press **▲** or **▼** to scroll among the sub-menus, or to adjust a setting.
- Press **<** to return to the previous menu options without changing the current setting.
- Press **TALK** to return to live video.

**Talk to your baby unit**

Press and hold **TALK** and speak to your parent unit. Your voice is transmitted to the baby unit. Release **TALK** when finished talking to hear your baby again.

**Turn off the screen**

Press **POWER** to turn off the parent unit screen without powering off the parent unit. You will still hear sounds from the baby unit.

**Tip**

- Press any key on the parent unit to turn the screen on again.

#### IMPORTANT SAFETY INSTRUCTIONS

- The applied nameplate is located at the bottom of the baby unit base. When in use, basic safety precautions should always be followed to reduce the risk of fire, electric shock and injury, including the following:
- Follow all warnings and instructions marked on the product.
  - Adult setup is required.
  - CAUTION:** Do not install the baby unit at a height above 6.5 feet (2 meters).
  - This product is intended as an aid. It is not a substitute for responsible and proper adult supervision and should not be used as such.
  - This product is not intended for use as a medical monitor.
  - Do not use this product near water, for example, near to a bath, sink, swimming pool or shower.
  - CAUTION:** Use only the internally, non-user replaceable battery fitted to the parent unit. There may be a risk of explosion if a wrong type of battery is used for the parent unit. The battery cannot be subjected to high or low extreme temperature and low air pressure at high altitude during use, storage or transportation. Disposal of batteries in fire or a hot oven, mechanically crushing or cutting the battery can result in an explosion. Subjecting products or batteries to an extremely high temperature environment can result in explosion or leakage of flammable liquids, or gas. Products or batteries subjected to extremely low air pressures may result in explosion or leakage of flammable liquids, or gas. Dispose of used batteries according to the information in **The RRBC seal**.
  - Use only the power adapters supplied with this product. Incorrect power adapter polarity or voltage can seriously damage the product.
  - Power adapter information:**  
Parent unit output: 5V DC 2A  
Vtech Telecommunications Ltd.  
Model: VT07EUS05200  
Baby unit output: 5V DC 1A  
Vtech Telecommunications Ltd.  
Model: VT05EUS05100
  - Rechargeable battery information:**  
3.7V 5000mAh, 18.5Wh Lithium-ion battery  
Zhuhai Great Power Energy Co., Ltd.  
Model: GSP806090-5Ah-3.7V-15LP
  - The power adapter is intended to be correctly oriented in a vertical or floor mount position. The prongs are not designed to hold the plug in place if it is plugged into a ceiling, under-the-table or cabinet outlet.
  - For pluggable equipment, the socket-outlet (power adapter) should be installed near the equipment and should be easily accessible.
  - Unplug this product from the wall outlet before cleaning. Do not use liquid or aerosol cleaners. Use a damp cloth for cleaning.
  - Do not modify the power adapters or replace with other third-party adapters.
  - Do not allow anything to rest on the power cords. Do not install this product where the cords may be walked on or damaged.
  - The product should only be operated from a power source indicated on the power adapter label or marking. If you are unsure of the type of power supply in your home, consult your dealer or electricity supply provider.
  - Do not overload wall outlets or use an extension cord.
  - Do not place this product on an unstable table, shelf, stand or other unstable surfaces.
  - This product should not be placed in any area where proper ventilation is not provided. Any slots or openings in the back or bottom of this product are provided for ventilation. To protect from overheating, openings must not be blocked by placing the product on a soft surface such as a bed, sofa or rug. This product should never be placed near or over a radiator or heat source.
  - Never insert any objects through any apertures or slots in the product as this can be dangerous and cause damage to the

**Adjust parent unit volume**

Press **VOL - / VOL +** to adjust your parent unit speaker volume.

**Pan and tilt the baby unit**

Press **Arrow keys < ▲ ▼ or >** to pan and tilt the baby unit.

#### OVERVIEW - PARENT UNIT

1 Antenna

2 3-level sound indicator light

3 Battery LED light

4 LINK LED light

5 Arrow keys < ▲ ▼ >

6 MENU / SELECT

7 RETURN / TALK

8 LCD off / POWER key

9 VOL - / VOL +

10 Speaker

11 Power jack

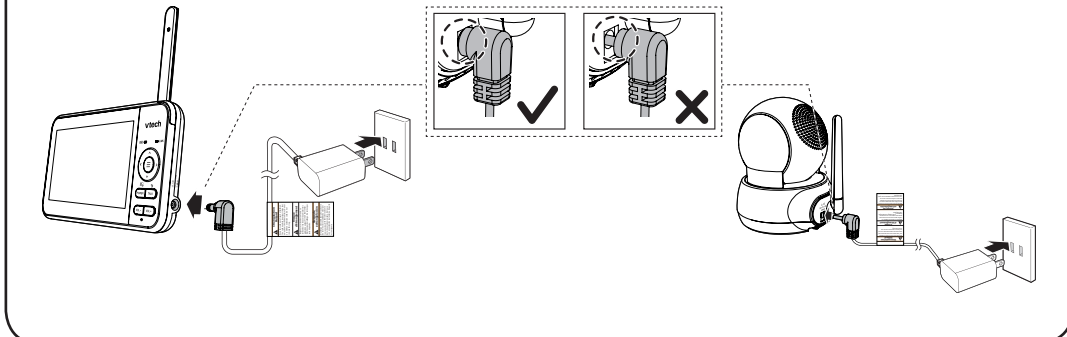
12 RESET

#### WHAT'S IN THE BOX

1 set for 924 / VM924  
2 sets for 924 Twin / VM924-2  
3 sets for 924 Triple / VM924-3  
4 sets for 924 Quad / VM924-4

#### CONNECT THE BABY MONITOR

- NOTES**
- The rechargeable battery in the parent unit is built-in.
  - Use only the power adapters supplied with this product.
  - Make sure the parent unit and the baby unit are not connected to an electronically controlled electric power outlet.
  - Connect the power adapters in a vertical or floor mount position only. The adapters' prongs are not designed to hold the weight of baby monitor, so do not connect them to any ceiling, under-the-table, or cabinet outlets. Otherwise, the adapters may not properly connect to the outlets.
  - Make sure the parent unit, the baby units and the power adapter cords are out of reach of children.



#### OVERVIEW - BABY UNIT

1 Light sensor

2 Camera

3 Infrared LEDs

4 Microphone

5 POWER LED light

6 ON/OFF switch

7 Speaker

8 Antenna

9 Power jack

10 Wall mount holes

11 PAIR / RESET key

- The parent unit and baby unit(s) provided are already paired.

#### NEED HELP?

For operations and guides to help you use your video monitor, and for the latest information and support, check out our online help topics and online FAQs.

Use your smartphone or mobile device to access our online help.

- Go to <https://help.vtechphones.com/924>, <https://help.vtechphones.com/924twin>, <https://help.vtechphones.com/924triple> or <https://help.vtechphones.com/924quad> OR
- Scan the QR code on the right. Launch the camera app or QR code scanner app on your smartphone or tablet. Hold the device's camera up to the QR code and frame it. Tap the notification to be redirected to the online help page.
- If the QR code is not clearly displayed, adjust your camera's focus by moving your device closer or further away until it is clear.

You can also call our Customer Support at 1 (800) 595-9511 [in US] or 1 (800) 267-7377 [in Canada] for help.

#### CONNECT THE BABY MONITOR (CONT'D)

- Charge the parent unit battery**
- When you have connected and turned on the parent unit, the battery will be charged automatically.
- NOTES**
- Before using the baby monitor for the first time, charge the parent unit battery for 12 hours. When the parent unit battery is fully charged, the battery icon segment are solid
  - It takes longer to charge the battery when the parent unit is turned on. To shorten the charging time, turn the parent unit off while charging.
  - The standby time varies depending on the sensitivity level you set, your actual use and the age of the battery.

BATTERY INDICATORS	BATTERY STATUS	ACTION
The screen displays  The  light flashes.	The battery has very little power and can only be used for a short time.	Charge without interruption (about 30 minutes).
The battery icon segments are solid	The battery is fully charged.	To keep the battery charged, connect the unit to AC power when in use.

#### POWER ON OR OFF THE BABY MONITOR

1 Slide the **ON/OFF** switch to power on or off your baby unit.

2 Press and hold **POWER** to power on or off your parent unit.

#### POSITIONING THE BABY MONITOR

1 > 3ft (1m)

2 > 1m (3ft)

3 > 3ft (1m)

**CAUTION**

- Keep the baby unit out of the reach of your baby. Never place or mount the baby unit inside the baby's crib or playpen.

**CAUTION**

- The default volume of your parent unit is level 4, and the maximum volume is level 7. If you experience any feedback noise from your baby monitor while positioning:
  - Make sure your baby unit and parent unit are more than 3 feet (1 meter) apart, OR
  - Turn down the volume of your parent unit.

**NOTE**

- To avoid interference from other electronic devices, place your baby monitor at least 3 feet (1 meter) away from devices such as wireless routers, microwaves, mobile phones and computers.

#### STATUS CHECK

Once you power on both your baby unit and parent unit, your parent unit displays image from the baby unit, and the **LINK** LED light turns on.

The baby unit's **POWER** LED light turns on.

#### PARENT UNIT ICONS

**Main menu icons**

Main menu	Sub-menu
<b>Brightness</b>	Adjust the parent unit LCD brightness.
<b>Lullaby</b>	<b>Play/Stop lullaby</b> <b>≈1 ≈2 ≈3 ≈4</b> • Select one of the soothing sounds, or white noise. <b>♪1 ♪2 ♪3 ♪4 ♪5</b> • Select one of the five melodies. <b>60min 45min 30min 15min OFF</b> • Play all melodies. <b>Set timer to stop playing the selected melody or soothing sound.</b>
<b>Alert Tone Settings</b>	Set the parent unit to beep when the battery is low. Set the parent unit to beep when the link between the parent unit and the baby unit is lost. Set the confirmation tone on or off when selecting an option in the menus. Set the parent unit to beep when the baby unit detects sounds while in Split mode (For pairing with <b>924 Twin/ VM924-2, 924 Triple/ VM924-3, 924 Quad/ VM924-4</b> ).

Main menu	Sub-menu
<b>Screen off Timer</b>	<b>OFF 5min 30min 60min</b> • The parent unit screen will turn off after the selected time to save energy. You can still hear your baby while the screen is turned off.
<b>Sound Sensitivity</b>	When <b>AUTO</b> is selected, the parent unit screen will automatically turn on when detected sounds exceed a set level. You can adjust the baby unit microphone sensitivity level so that the higher the sensitivity level, the more sensitive the baby unit is in detecting sounds for transmitting to the parent unit. For details, see the <b>Sound sensitivity and sound activation</b> section. • The parent unit will then turn off again after 50 seconds if the sound detected is lower than the set level.
<b>Temperature</b>	<b>ON / OFF</b> • Turn on/off temperature alert tone. • Set the parent unit to beep whenever the room temperature detected by the baby unit falls outside of the set temperature range. • Set the minimum temperature. • Set the maximum temperature. • Set temperature display in Fahrenheit (°F) or Celsius (°C).
<b>Baby Unit Settings</b>	<b>Baby unit speaker volume</b> • Adjust the baby unit speaker volume. <b>2X 1X</b> • Zoom in.

**Monitoring Mode** (For pairing with **924 Twin/ VM924-2, 924 Triple/ VM924-3, 924 Quad/ VM924-4**)

- Single CAM mode**  
The screen displays images only from the selected baby unit in full screen.
- Split mode**  
The screen displays images from multiple or all selected baby units at the same time in split view.
- Patrol mode**  
The screen displays a single cam view that transitions to a different baby unit every 10 seconds.