



Thank you for purchasing Android 11 tablet. Featuring a fast and responsive octa-core processor, this tablet is perfect for accomplishing everyday tasks, streaming music and movies, taking photos, checking emails, etc.

The tablet offers 64GB of internal storage, Bluetooth connectivity, on-the-go productivity services.

The following information will help you get the most out of your tablet.

What you should know to ensure best performance:

- Charge the battery completely before first use.
- While updates download in the background, tablet performance can be affected until completed.
- Close unused applications. Open apps that run in the background will affect overall performance.
- Battery Consumption: Play times on a fully charged battery will vary depending on your display settings, apps that remain open, and internet use (e.g., streaming video content).
- It is recommended to use a tablet screen protector and tablet case to protect the tablets.

10.1" tablet

TPU Protection Case

Warranty

Quick Start Guide

QA Pass Card

USB-C cable

Charger

Input: 100-240V~50/60Hz, 0.3A  
Output: 5.0V  $\Rightarrow$  2.0A

**FCC Statement**

This device complies with part 15 of the FCC rules. Operation is subject to the following two conditions: (1) this device may not cause harmful interference, and (2) this device must accept any interference received, including interference that may cause undesired operation.

Changes or modifications not expressly approved by the party responsible for compliance could void the user's authority to operate the equipment.

NOTE: This equipment has been tested and found to comply with the limits for a Class B digital device, pursuant to part 15 of the FCC Rules. These limits are designed to provide reasonable protection against harmful interference in a residential installation. This equipment generates uses and can radiate radio frequency energy and, if not installed and used in accordance with the instructions, may cause harmful interference to radio communications. However, there is no guarantee that interference will not occur in a particular installation. If this equipment does cause harmful interference to radio or television reception, which can be determined by turning the equipment off and on, the user is encouraged to try to correct the interference by one or more of the following measures:

- Reorient or relocate the receiving antenna.
- Increase the separation between the equipment and receiver.
- Connect the equipment into an outlet on a circuit different from that to which the receiver is connected.
- Consult the dealer or an experienced radio/TV technician for help.

The device has been evaluated to meet general RF exposure requirement. The device can be used in portable exposure condition without restriction.

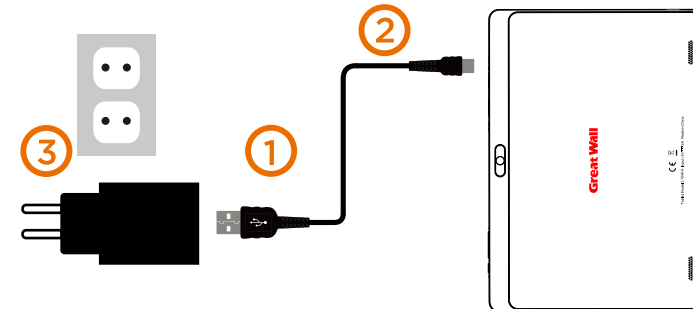
**Great Wall**  
Designed by Great Wall

The diagram illustrates the features of the Great Wall G10 tablet from multiple perspectives. The top view shows the front of the device with a large screen and a front-facing camera. The bottom view shows the back of the device with a rear-facing camera. The side view shows the tablet's profile with various ports and buttons. The numbered callouts are as follows:

- 1. Microphone
- 2. TYPE-C
- 3. TF Card Slot
- 4. Micro SIM Card Slot
- 5. Earphone jack
- 6. Volume Control
- 7. Power On/Off
- 8. Reset
- 9. Camera (Front)
- 10. Speaker
- 11. Camera (Rear)

It is recommended to fully charge the tablet before first use. To charge the tablet,

- 1) plug the USB cable into the AC adapter,
- 2) attach the other end to the USB-C input on the tablet,
- 3) plug the AC adapter into a wall outlet.



When the tablet is ON and charging, the battery icon will pulsate.  
It is normal for the tablet to get warm while charging, playing games, or streaming video.  
Battery life will vary depending on usage.  
Note: Leave tablet in a well ventilated area while charging.

1. Do not install near any heat sources such as radiators, heat registers, stoves, or other apparatus (including amplifiers) that produce heat.
2. **WARNING:** Only use attachments/accessories specified or provided by the manufacturer (such as the exclusive supply adapter, battery etc).
3. **WARNING:** The mains plug should be kept in a state that can be disconnected at anytime to avoid emergency situation.
4. **WARNING:** The apparatus should not be exposed to dripping or splashing. Objects filled with liquids, such as vases or drinking glasses, should not be placed on the apparatus.
5. **WARNING:** Please refer the electrical and safety information on tablet and user manual before installing or operating the apparatus.

Use the device where the ambient temperature is between 0° and 35° C (32° to 95° F). Low- or high-temperature conditions might cause the device to change its behavior to regulate its temperature. Using your tablet in very cold conditions outside of its operating range might temporarily shorten the battery life and could cause the device to turn off. Battery life will return to normal when you bring the device back to higher ambient temperatures. Using the device in very hot conditions can permanently shorten battery life.

Model	L1048-A	WiFi	802.11ac/b/g/n
CPU	T618 2.0GHz	Bluetooth	5.0
Screen Resolution	10.1 inch 1200*1920 IPS	communication	GSM:B2/3/5/8
Memory	LP DDR4 4GB/eMMC 64GB		WCDMA:B1/2/4/5/8
Battery Capacity	3.8V/5000mAh		4G:B2/B4/B5/B7/8/28/40
Adapter	5V/2A	Dimensions	243.5*172*9.85 MM
Camera	5.0MP Front/8.0MP Rear	Weight	0.53 KG

SAR is measured with the device at 0 mm to the body, while transmitting at the highest certified output power level in all frequency bands of the device. The maximum SAR value is 0.758 W/kg (body) averaged over 1 gram of tissue. This equipment should be installed and operated with a minimum distance of 0 cm between the radiator and your body.

[illegible]