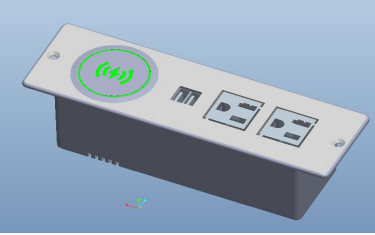


Installation manual

sequence	product name	Scope of application	Product model	Product parameters	Product Image	Remark
1			ZG-JJM	12A 125V AC		
				15A 125V AC		

INSTALLATION INSTRUCTIONS:

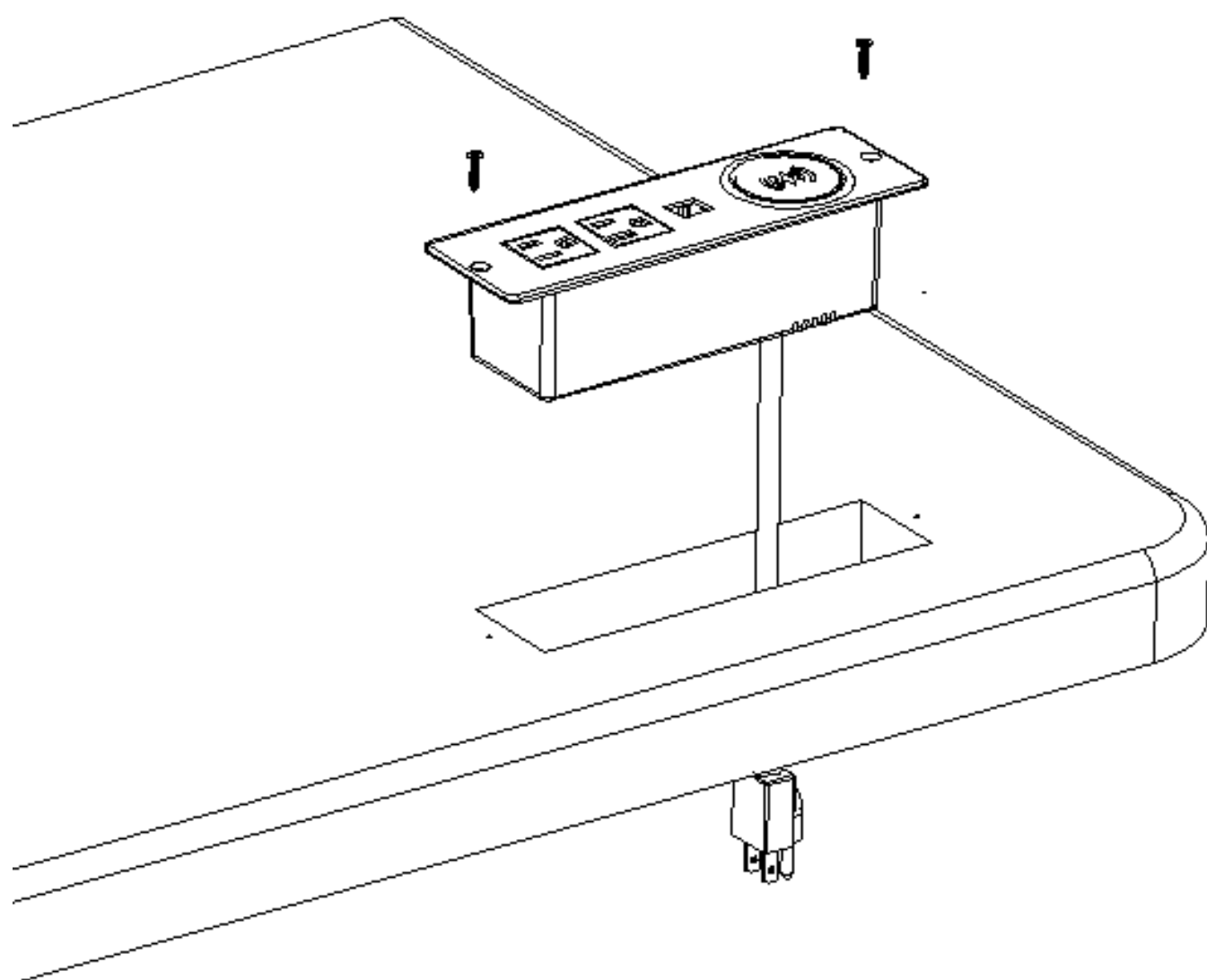
- 1. The socket is suitable for manufacturers such as bedside cabinet, sofa, working table, desk, etc.
- 2. The manufacturer buys the product and inserts it into the mounting hole. The mounting procedure: make a hole in the countertop-insert it into the furniture row-screw the panel in place and carefully check for looseness.
- 3. Detailed installation drawings are shown in the attached installation manual.

PRECAUTIONS:

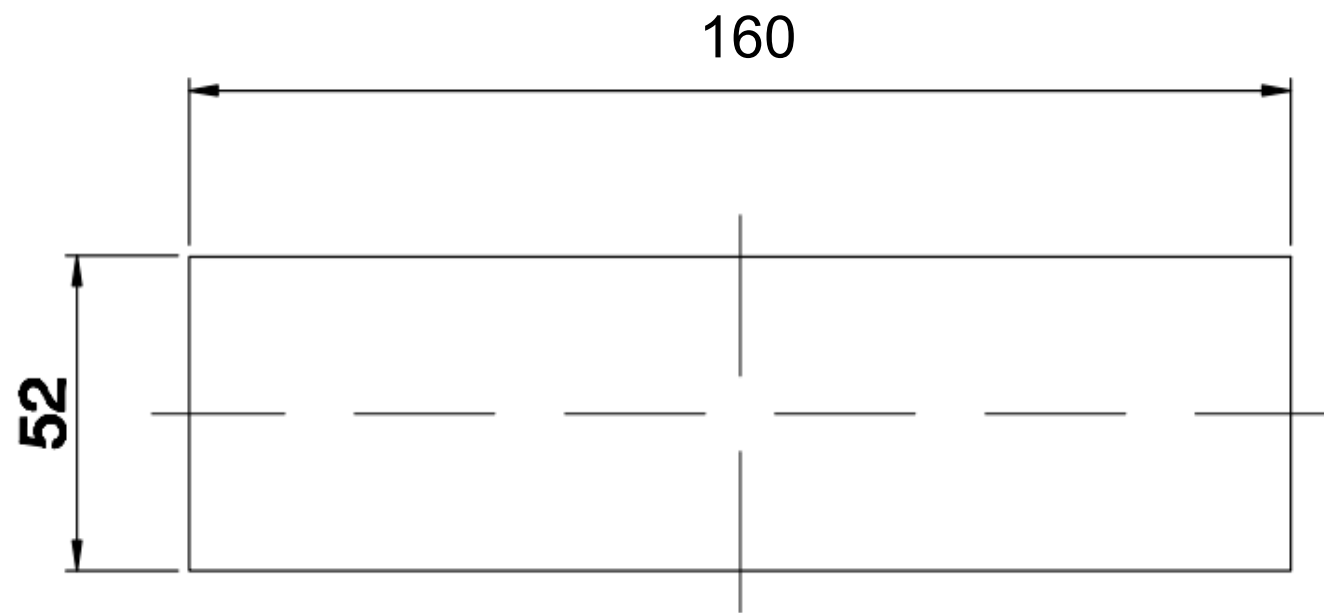
- 1. Determine the required according to the device position, measure the size of the bottom of the furniture row insert, the table after the hole embedded, with screws to the panel

Installation Manual:

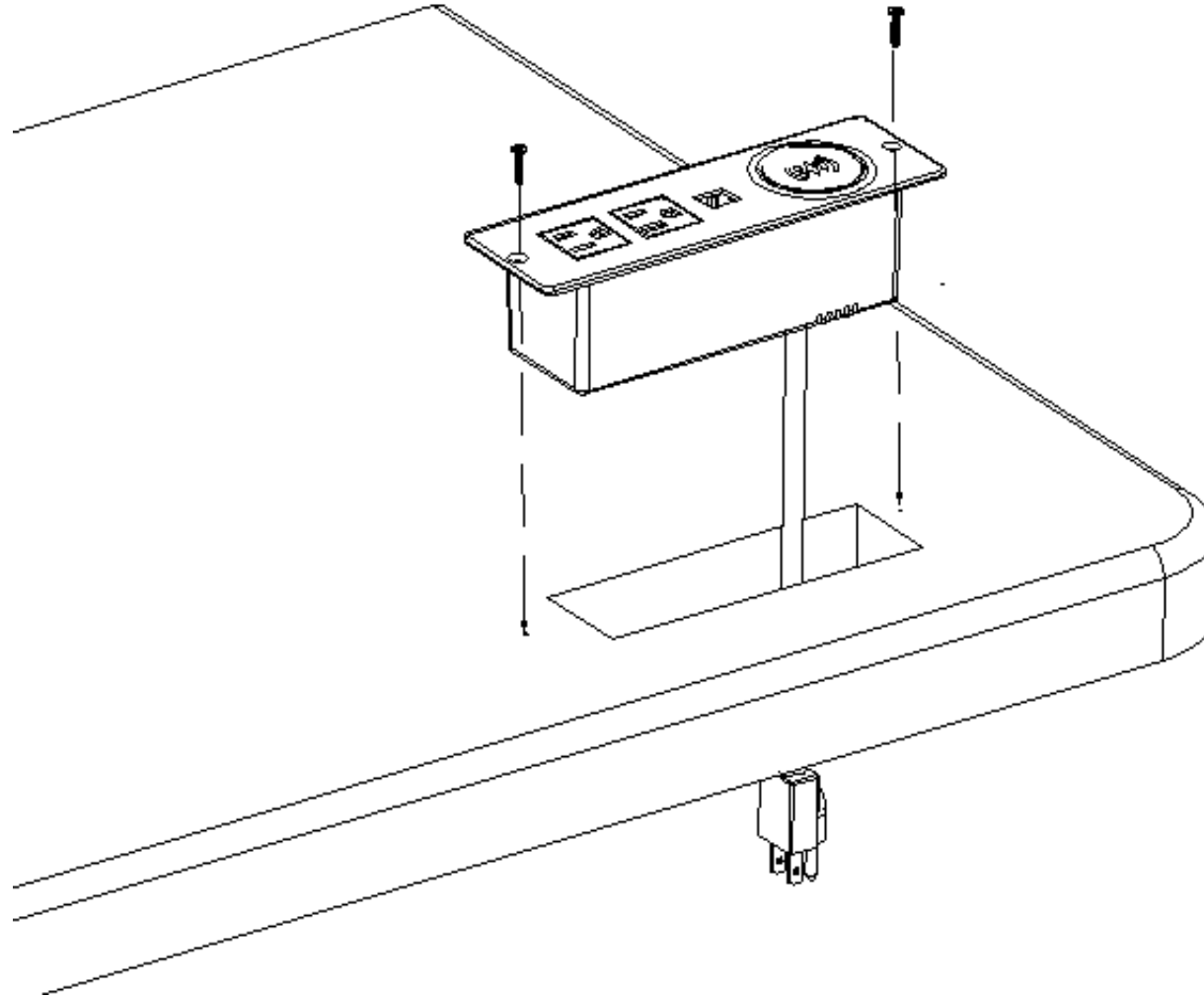
The product is installed on a non-horizontal table



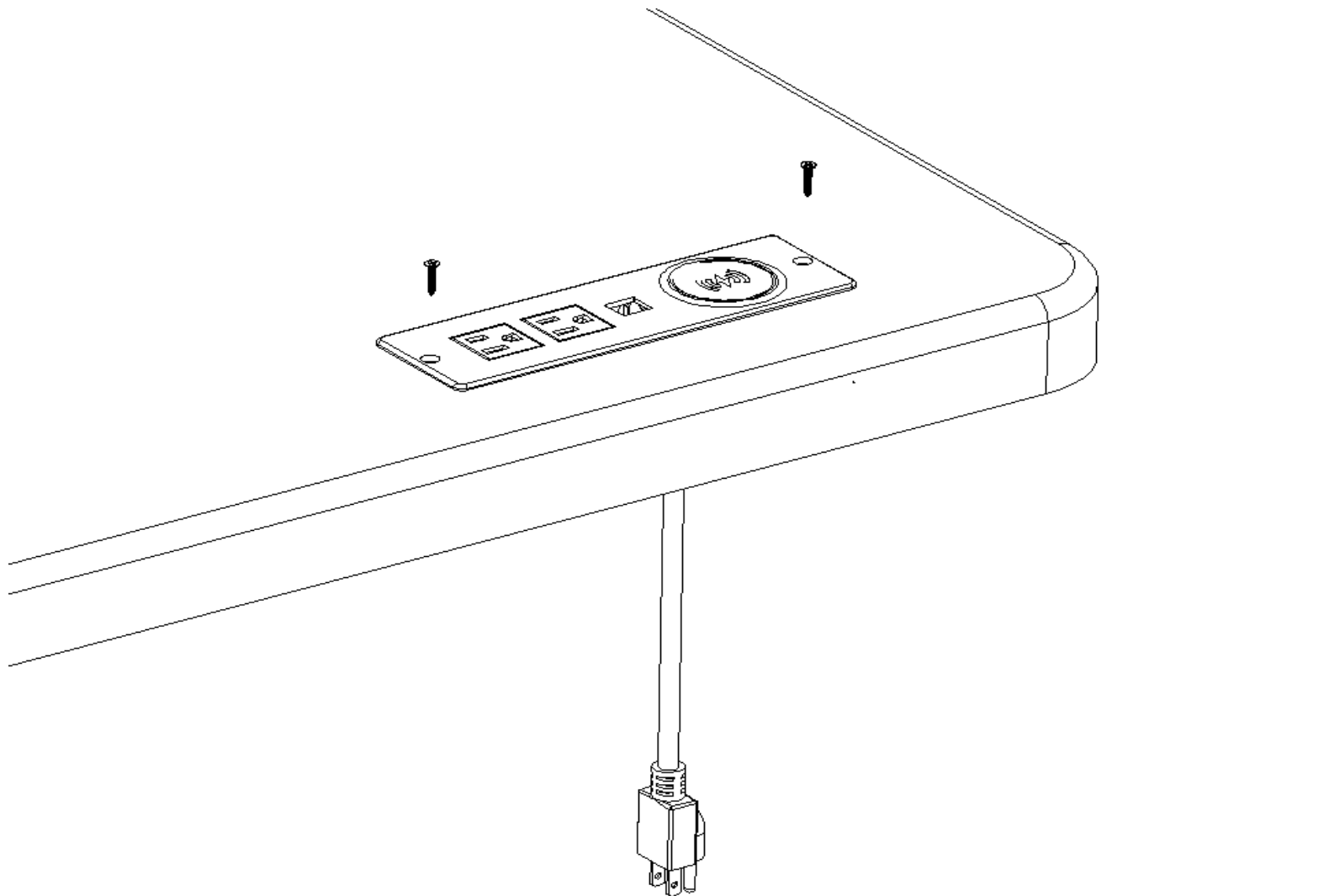
1.Mounting hole size



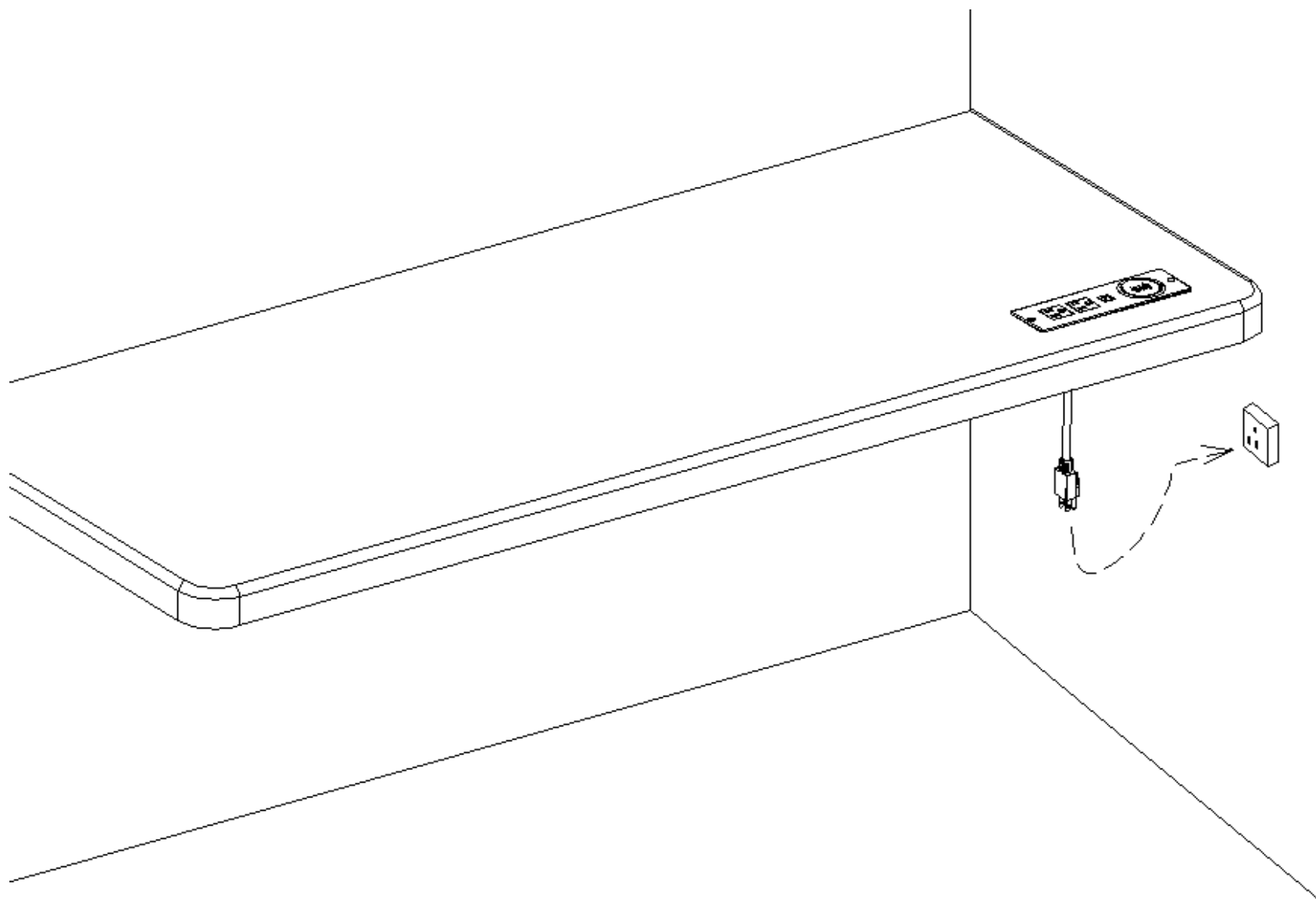
2. Insert the Furniture
Row into the desktop
opening



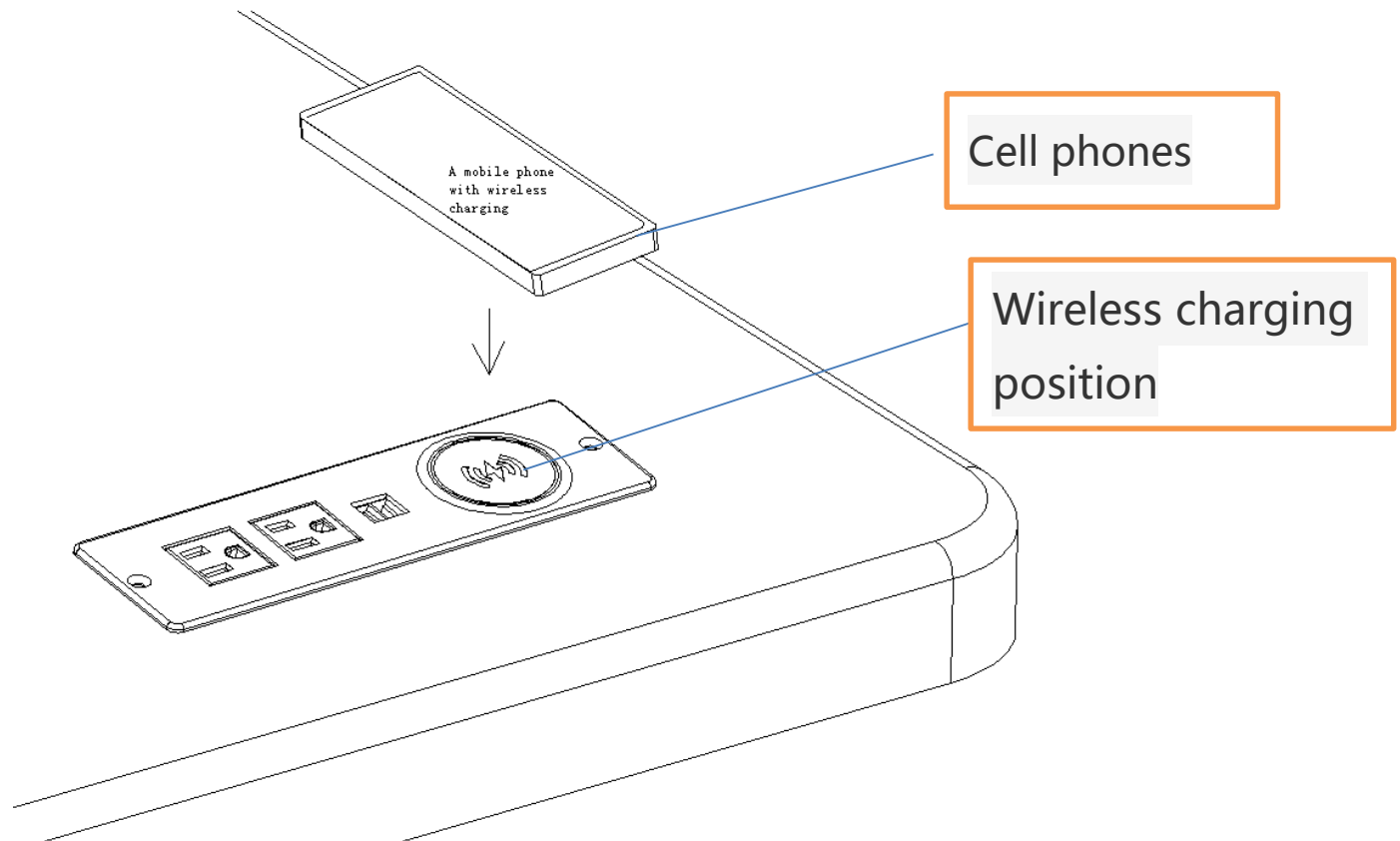
3. Lock the panel with
a screwdriver



4. Plug in the power supply and complete the installation.



5. Charging instructions: with wireless charging function of mobile phone use, mobile phone on the back of the wireless sensor above.



FCC Warning

This device complies with Part 15 of the FCC Rules. Operation is subject to the following two conditions:(1) This device may not cause harmful interference, and (2) this device must accept any interference received, including interference that may cause undesired operation.

Note: This equipment has been tested and found to comply with the limits for a Class B digital device, pursuant to part 15 of the FCC Rules. These limits are designed to provide reasonable protection against harmful interference in a residential installation. This equipment generates, uses and can radiate radio frequency energy and, if not installed and used in accordance with the instructions, may cause harmful interference to radio communications. However, there is no guarantee that interference will not occur in a particular installation. If this equipment does cause harmful interference to radio or television reception, which can be determined by turning the equipment off and on, the user is encouraged to try to correct the interference by one or more of the following measures:

- Reorient or relocate the receiving antenna.
- Increase the separation between the equipment and receiver.
- Connect the equipment into an outlet on a circuit different from that to which the receiver is connected.
- Consult the dealer or an experienced radio/TV technician for help.

NOTE 2: Any changes or modifications to this unit not expressly approved by the party responsible for compliance could void the user's authority to operate the equipment.

Refer to FCC Part 18.213(c) and KDB 784748 Anner A section A.5:

- (a) Max. Electric Field Emissions: 6.85V/m; Max. Magnetic Field Emissions: 0.51A/m
- (b) The maintenance of the system is the responsibility of the manufacturer.
- (c) To prevent interference, the product should be as far away from devices operating at the same frequency as possible.

RF exposure considerations

- (d) This equipment complies with the FCC RF radiation exposure limits set forth for an uncontrolled environment. This equipment should be installed and operated with a minimum distance of 20cm between the radiator and any part of your body.