

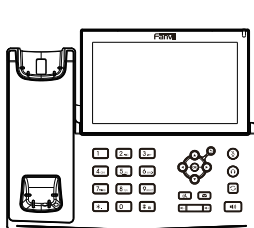
## X7

# Quick Installation Guide

Fanvil Technology Co., Ltd  
[www.fanvil.com](http://www.fanvil.com)

Rev: B-V2

## Packaging list



IP Phone



Handset



Handset Cord



Ethernet Cable



Quick Installation Guide



Stand



Power Adapter  
(Optional)

## Screen icon

In hands-free mode	Call forward activated	New SMS	Dialed call(s)
In headset mode	Disable do not disturb (Blue)	New VM messages	Internet connected
In handset mode	Do not disturb activated (Red)	Voice quality level of call	Internet is disconnected
Mute activated	SIP hotspot activated	Keypad locked	No IP address
Silent mode	VLAN activated	Forward call(s)	Wireless network connected
Call is on hold	VPN activated	Missed call(s)	Wireless network disconnected
Auto-answering activated	Bluetooth device paired connection	Received call(s)	Wireless network failure

## Keys features



Message waiting indicator



Up/down/left/right navigation keys,  
Return key  
OK key, Shortcut to Menu  
Return key, Go back to the previous directory



Hold key, Hold/Resume the call



In idle mode: ringer off  
In communication mode: mute/un-mute a call



In idle mode or during ringing:  
increase or decrease ringer volume  
In communication: increase or  
decrease earpiece, headset or hands-free volume



Voice message key



Headset key,  
Activate/deactivate Headset



Redial key, Access to redial the last record



Long press to lock keypad.  
Enter PIN to unlock keypad (default 123)

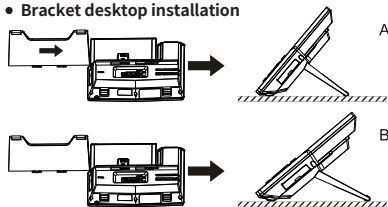


Hands-free key, Activate/deactivate hands free

## Installation the device

Please follow the instructions in below picture to install the device.

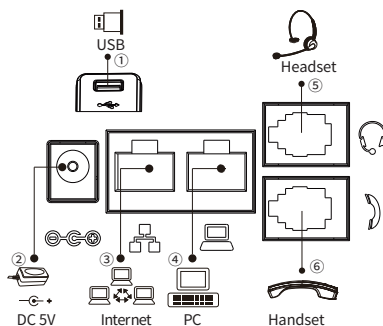
### • Bracket desktop installation



### • Connecting to the device

Please connect power adapter, network, PC, handset, and headset to the corresponding ports as described in below picture.

- ① USB port: connect USB device (USB flash drive, WiFi dongle)
- ② Power port: connect the power adapter.
- ③ Network port: connecting local area network or internet.
- ④ PC port: the network port connect to the computer.
- ⑤ Headset port: connect headset.
- ⑥ Handset port: connect IP Phone handset.



## Configuration

### Configuration via LCD menu of phone

1. Press Menu > Advanced (default password 123)
2. Select Network: To configure the Network Settings (IPv4/IPv6/IPv4&IPv6, DHCP/Static/PPPoE).
3. Select Accounts: To configure enable the account, fill the SIP server address, port, user name, password etc.
4. Save the configuration.

### Configuration via web

1. Get the IP address from the phone: Press key, or Menu > Status > IPv4 / IPv6.
2. Login: Input the IP address in the web browser. The PC and phone should be in the same IP address segment (The default username and password are both 'admin').
3. Configure: Select network/account etc, and fill the relevant content.
4. Save the configuration.

## Language setting

1. Press Menu key > Basic > Language.
2. Select the desired language and press OK soft key.

## Making a call

1. **Pre-dialing:** enter the phone number and pick up the handset.
2. **Direct dialing:** lift the handset and enter the phone number.
3. **Handsfree:** enter phone number and press or vice versa.
4. **Headset:** enter phone number and press or vice versa.
5. **Designated line:** press line key, enter phone number and press dial key.

## Accepting a call

1. **Using the handset:** pick up the handset.
2. **Using the headset:** press .
3. **Using the handsfree:** press .

## Redial

1. Press key, redial a call number.

## Call Mute

1. Press to Mute the microphone during the call.
2. Press again to un-mute the conversation.

## Putting a call on hold

1. Press key or Hold soft key, caller is put on hold.
2. To retrieve the call press key or Resume soft key.  
**Note:** with more than one active call, select desired call with the navigator keys and use the corresponding soft key to hold or resume.

## Call transfer

### Attended transfer:

1. Press Xfer soft key during the active conversation, the call is put on hold.
2. Dial the second telephone number.
3. When the call is answered, then press Xfer soft key to complete the operation.

### Blind transfer:

1. Press Xfer soft key during the active conversation, the call will be on hold.
2. Then enter the 2nd telephone number and press Xfer soft key.

Fanvil Technology Co., Ltd

Website: [www.fanvil.com](http://www.fanvil.com)

EEmail: [sales@fanvil.com](mailto:sales@fanvil.com) [support@fanvil.com](mailto:support@fanvil.com)

Tel: +86-755-2640-2199 Fax: +86-755-2640-2618

Add: 10/F Block A, Dualshine Global Science Innovation Center,  
Honglang North 2nd Road, Bao'an District, Shenzhen, China

## Call forward

1. Press Menu > Features > Call Forward.
2. Select the line, the type of forward, enter the destination number and status, and press OK soft key.

## Call conference

1. Once in line with 1st caller, press conference soft key, 1st caller is put on hold.
2. Then call the 2nd number.
3. After, 2nd call is established, press conference soft key to set up the conference.

## Programmable keys

### DSS virtual keys:

1. You can use the phone web interface to configure the keys of the screen.
2. You can press any keys which is still blank or long press the key that have configured, select a type and value, press OK key.
3. Press Menu > Basic > Keyboard > DSS Key settings. Select the key, type and value, press OK key.


### Other keys:

1. You can also configure shortcuts for the navigation keys, and which will be available in idle mode.
2. Press Menu > Basic > Keyboard, select among the configurable items, and select your desired type and value, press OK key.

## Do not disturb

1. Press DND soft key, and enable the device do not disturb mode.
2. Or press Menu > Features > DND, and select the Mode and Type, and press OK key.

## Voice mail

1. To access your voice mailbox, press  or Menu > Message > Voice Message, number of messages will be indicated if provided by your server or pbx.
2. Select the line and press Play to call.

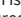



## Bluetooth

1. Press Menu > Basic > Bluetooth.
2. Press OK soft key to enter the bluetooth open interface. After opening, press Scan soft key to display the list of bluetooth scanned. Select any device and press connect.

## WiFi



1. Plug the WiFi dongle. Press Menu > Basic > WLAN.
2. Press OK soft key to enter the WLAN open interface. After opening, press Scan soft key to display the list of Wi-Fi scanned.
3. Press Enter soft key to enter the available Network, select the wireless network, press the Connect soft key and enter the password to connect.

## Call list

1. Press  key or Menu > CallLog > Local Call Logs.
2. Scroll through the list using .
3. To dial an entry, press Dial soft key or pickup handset or press  or .

## Phonebook

### Access Phonebook:

1. Press Contact soft key or Menu > PhoneBook > Local Contacts.
2. Select All Contacts or other group.
3. To dial an entry, press Dial soft key or pickup handset or press  or .

### Add new entry:

1. Press Contact soft key, Press All Contacts or other group > Press Add.
2. Enter name and number and press OK soft key.

## Regulatory Compliance

### Federal Communication Commission (FCC) — USA

This device complies with Part 15 of FCC Rules. Operation is subject to the following two conditions:

- (1) this device may not cause harmful interference, and
- (2) this device must accept any interference received; including interference that may cause undesired operation.

This equipment has been tested and found to comply with the limits for a Class B digital device, pursuant to Part 15 of the FCC Rules. These limits are designed to provide reasonable protection against harmful interference in residential installation. This equipment generates, uses, and can radiate radio frequency energy, and if it is not installed and used in accordance with the instruction manual, it may cause harmful interference to radio communications. However, there is no guarantee that interference will not occur in a particular installation. If this equipment does cause harmful interference to radio or television reception, which can be determined by turning the equipment off and on, the user is encouraged to try to correct the interference by one or more of the following measures:

- Reorient or relocate the receiving antenna.
- Increase the separation between the equipment and receiver.
- Connect the equipment into an outlet on a circuit different from that to which the receiver is connected.
- Consult the dealer or an experienced radio/TV technician for help.

**Warning:** Any changes or modifications to this unit not expressly approved by the party responsible for compliance could void the user's authority to operate the equipment.

This equipment complies with FCC radiation exposure limits set forth for an uncontrolled environment. This equipment should be installed and operated with minimum distance of 20cm between the radiator and your body. This transmitter must not be co-located or operating in conjunction with any other antenna or transmitter.

This equipment complies with Part 68 of the FCC rules and the requirements adopted by the ACTA. On the bottom of this equipment is a label that contains, among other information, a product identifier in the format US: 311IPNANX7V2. If requested, this number must be provided to the telephone company.