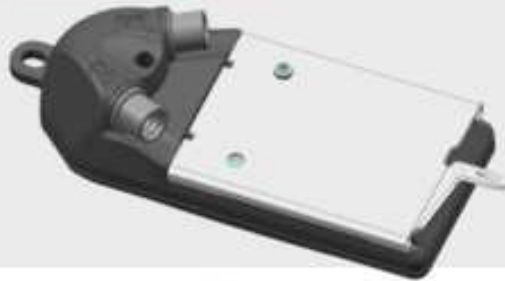


# Mounting of BCM3100 to BDU37yy

# Overview of BDU37yy parts

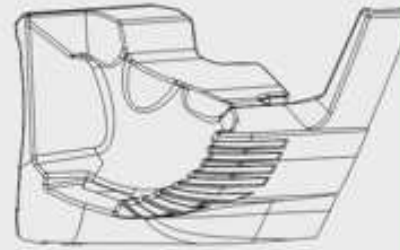
## OE "KITS"

Pre-Assembly  
ConnectModule  
w/ Grounding Plate



Packaging @ Zihuai

Rubber Support BCM  
BDU37yy



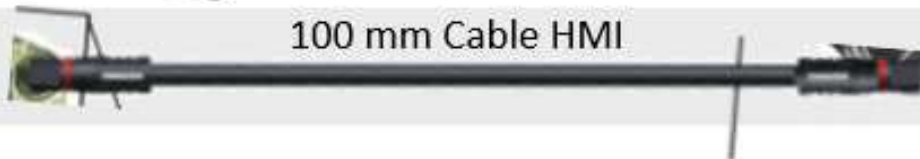
Packaging @ Zihuai

Screw M4x8  
BDU4



No special BCM part

100 mm Cable HMI



## AFTERMARKET KITS

- Pre-Assembly ConnectModule w/ Grounding Plate
- Screw M4x8 BDU4
- Rubber Support BCM BDU37YY
- 100 mm Cable HMI

EB13.200.014



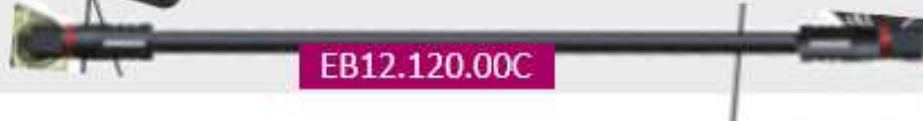
EB13.200.02L



1.270.016.499



EB13.200.009



EB12.120.00C

Packaging @ DC-EU

# Overview of final position

BDU37yy

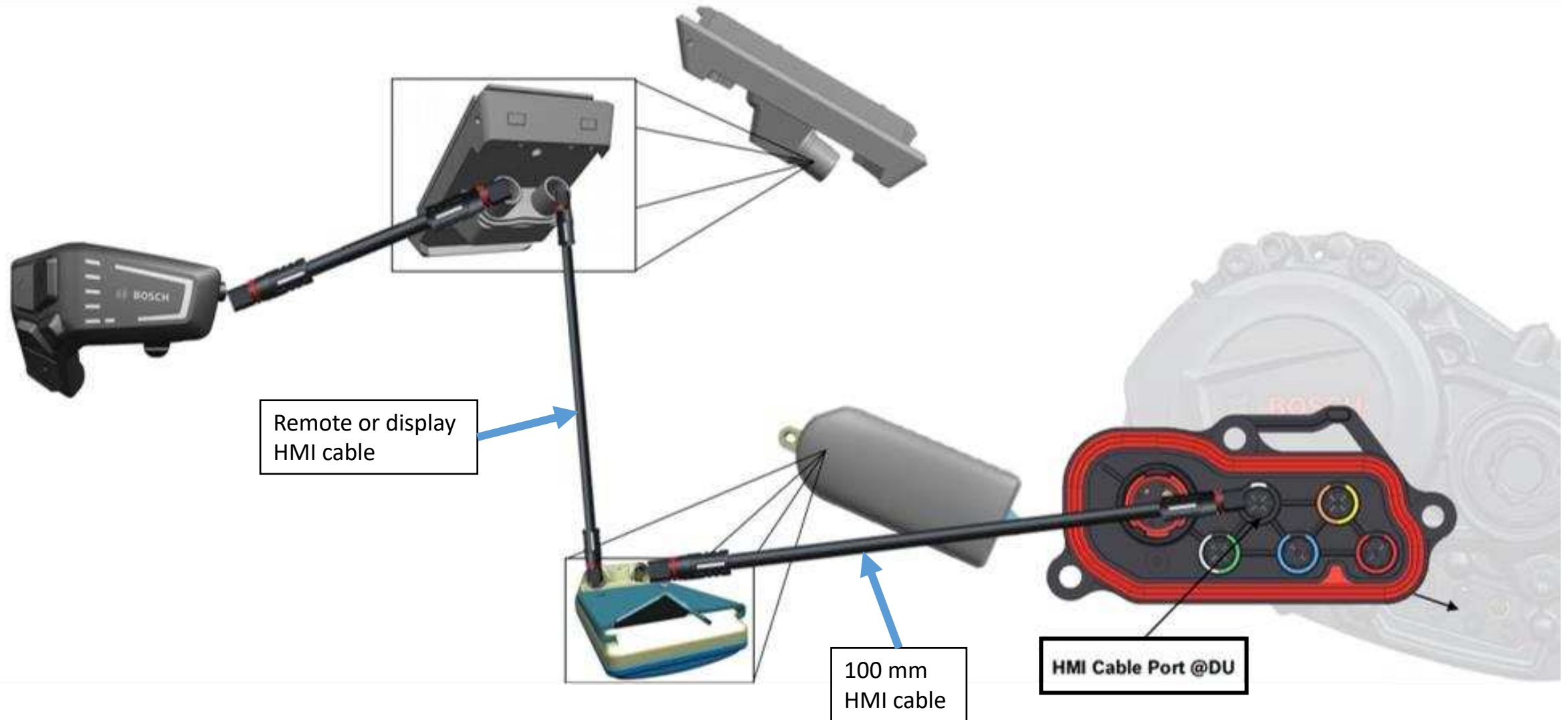
BCM Rubber support

BCM3100 Assembly

EJOMAT SHEETtracs screw 40x8



# Overview of system

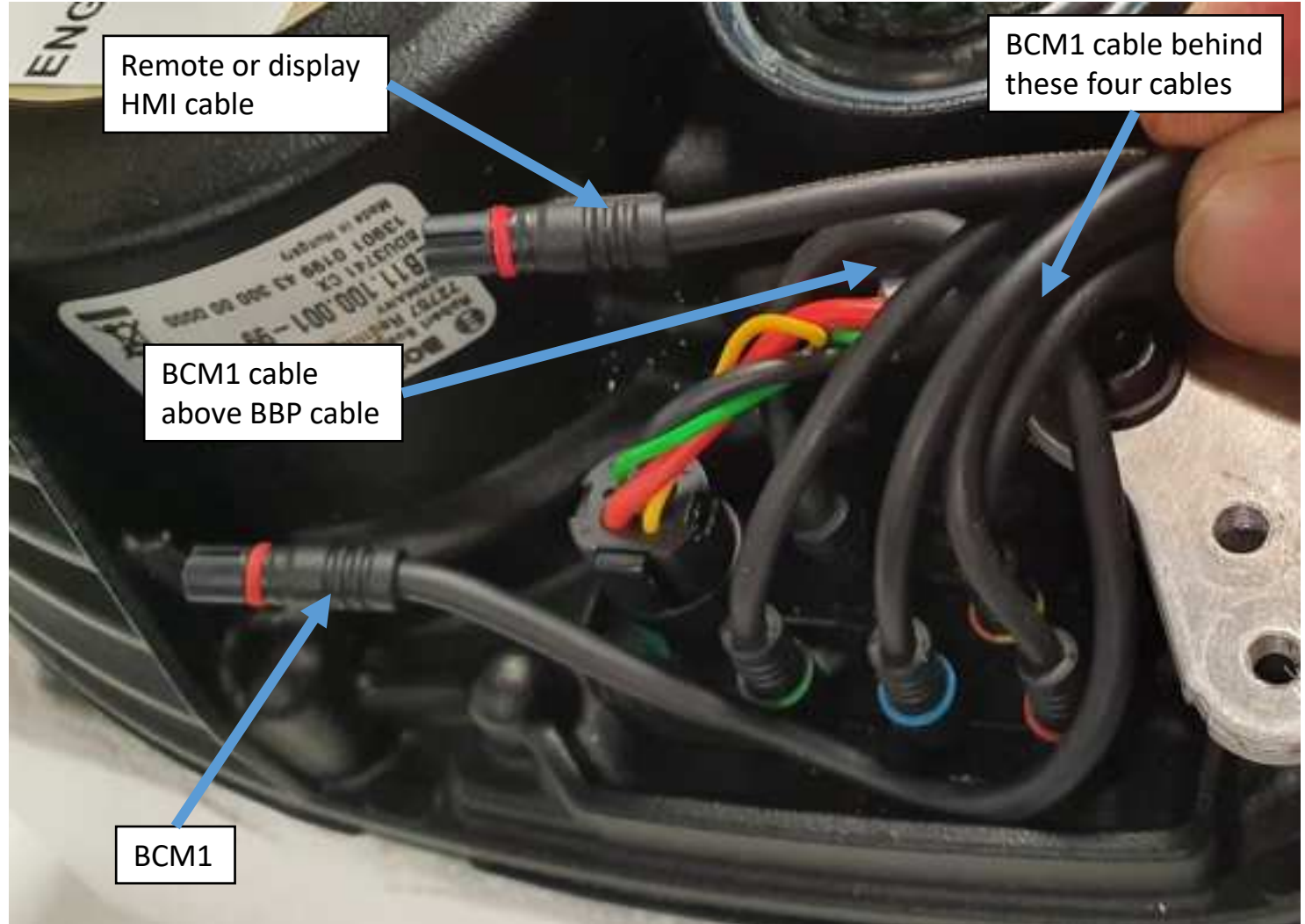


# Mounting step 1: Preparing the cables

- The wires of BBP cable should be tied together by either twisting 1 turn, or cable tie or tape.
- The BBP cable should be routed close to BDU housing with max. distance to BCM.
- All extra cable length should be located in bike frame away from BCM.

## NOTE!

If the cables are routed under CP, pay attention to the cable position to minimize the risk of cable damage due to wear against the screw M4x8 BDU4.





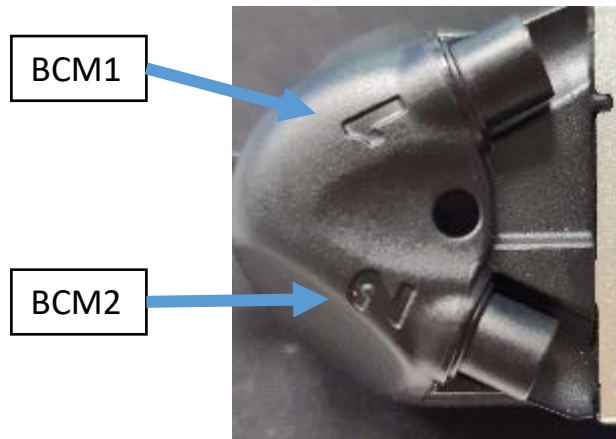
## Mounting step 2: Rubber support to BDU

BCM Rubber  
support



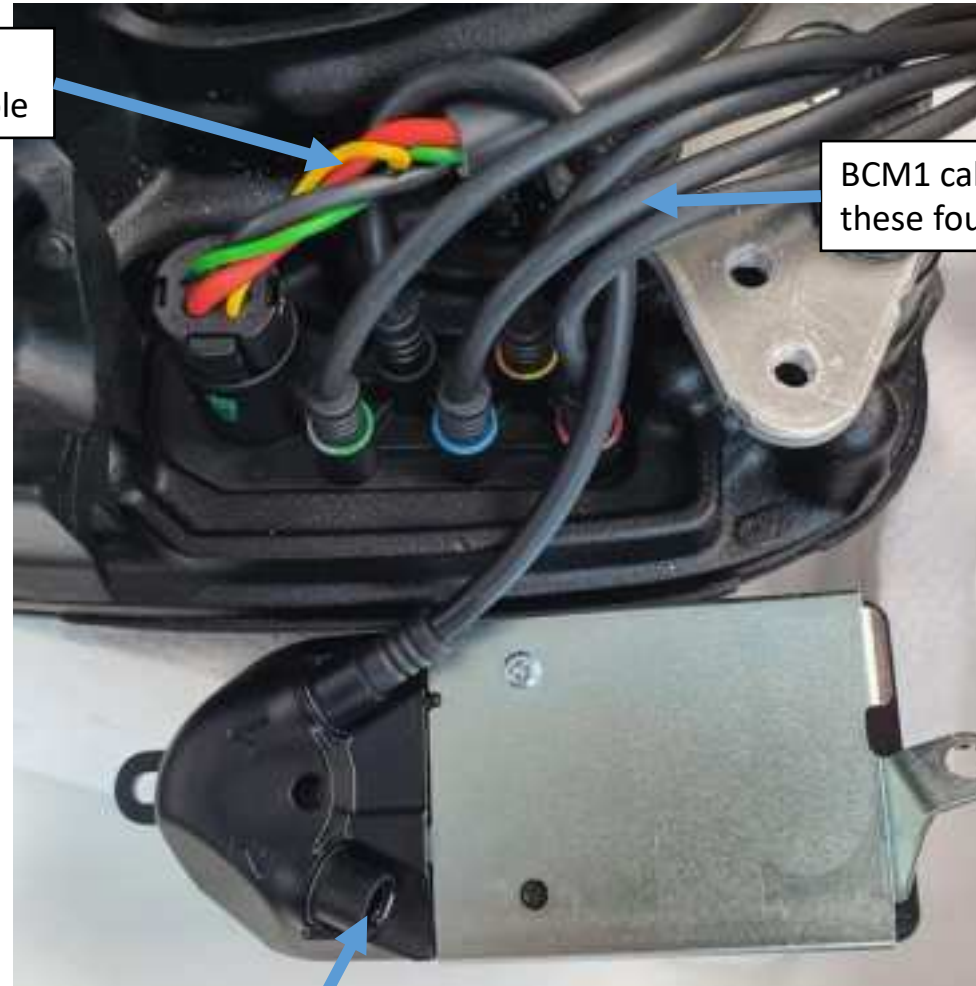
# Mounting step 3: Connect the HMI cables to BCM

Assemble cables:  
Cable 1 (HMI BCH3611\_150)  
into DU and to BCM1.  
Cable 2 (remote or display  
HMI cable) to BHU3x00 or  
BRC3x00.



BCM1 cable  
above BBP cable

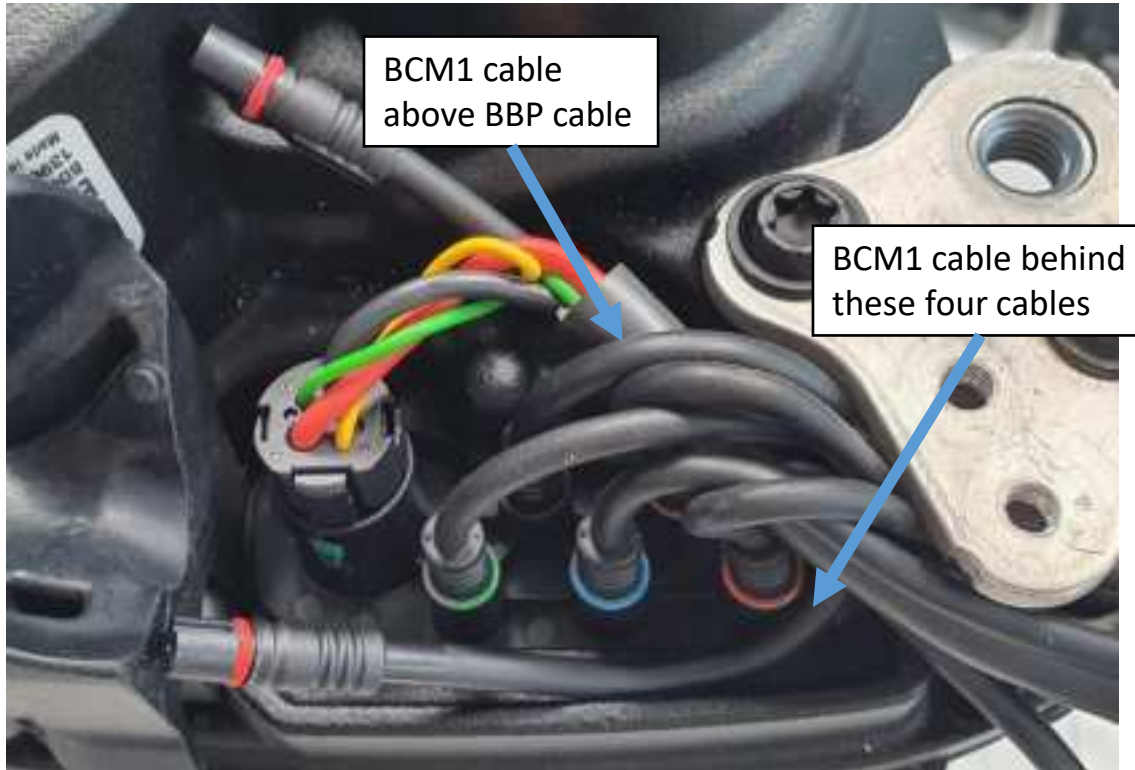
BCM1 cable behind  
these four cables



Attach remote or display  
HMI cable to BCM2

# Alternative step 3: Routing of the cables under the CP

A: Route all cables under CP



B: Attach BCM1





## Alternative step 3: Routing of the cables under the CP

C: Attach remote or display HMI cable to BCM2



D: Assemble the screw to CP according to step 4



EJOMAT SHEETtracs  
screw 40x8 Torx T20

## Mounting step 4: Attach BCM to BDU37yy

A: Hook tab of BCM into rubber support



Insert BCM here

B: Align screw holes



BCM2 cable

Align holes

Avoid clamping any cables between CP and BCM.

### NOTE!

CP should be version XY to comply with specification of assembly screw torque on next page.

If older version of CP is used pay attention when assembling the screw. Older CP have smaller hole diameter, and increased risk of breaking the screw.

## Continue mounting step 4: Attach BCM3100 to BDU37yy

C: Assemble the screw

Push BCM inwards while screwing.



EJOMAT SHEETtracs screw 40x8 Torx T20

**NOTE!**  
If the cables are routed under CP, pay attention to the cable position to minimize the risk of cable damage due to wear against the screw M4x8 BDU4.

Assembly screw torques:

1<sup>st</sup> time: 5,0 Nm.

2<sup>nd</sup> to 3<sup>rd</sup> time (if dis-assembled): 4,0 Nm.

If screw is disassembled, it should be thrown away and a new screw shall be used. Also, the screw shall be positioned by hand to avoid the cutting of a second thread.

If the CP is of older version:

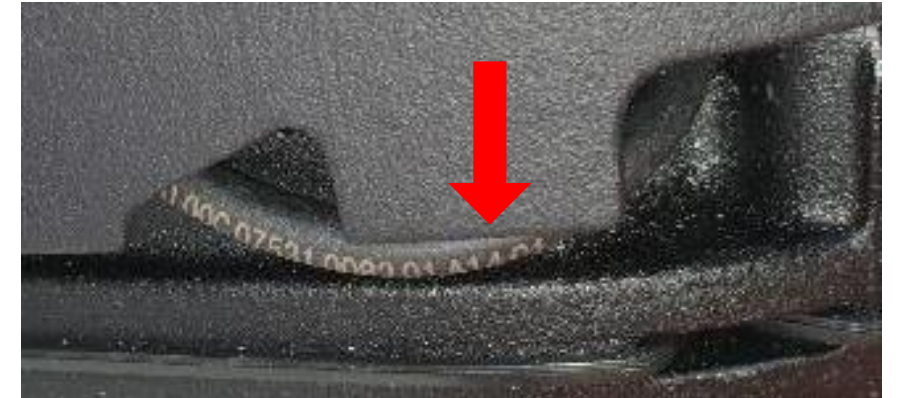
- pay attention when assembling the screw. Older CP have smaller hole diameter, and increased risk of breaking the screw.
- Inspect that the screw is completely mounted and no gaps between grounding plate, screw and CP.

## Mounting step 5: Align BCM1 cable and mount Design Cover

To prevent clamping the BCM1 cable when Design Cover is mounted, the cable routing should be according to below picture. After mounting the Design Cover, inspect if the BCM1 cable is clamped.



Pull BCM1 cable  
and align here



If BCM1 cable is clamped by design  
cover, push it back underneath before  
mounting the Design Cover screw.