

EXHIBIT 9**INTERNAL PHOTOGRAPHS**

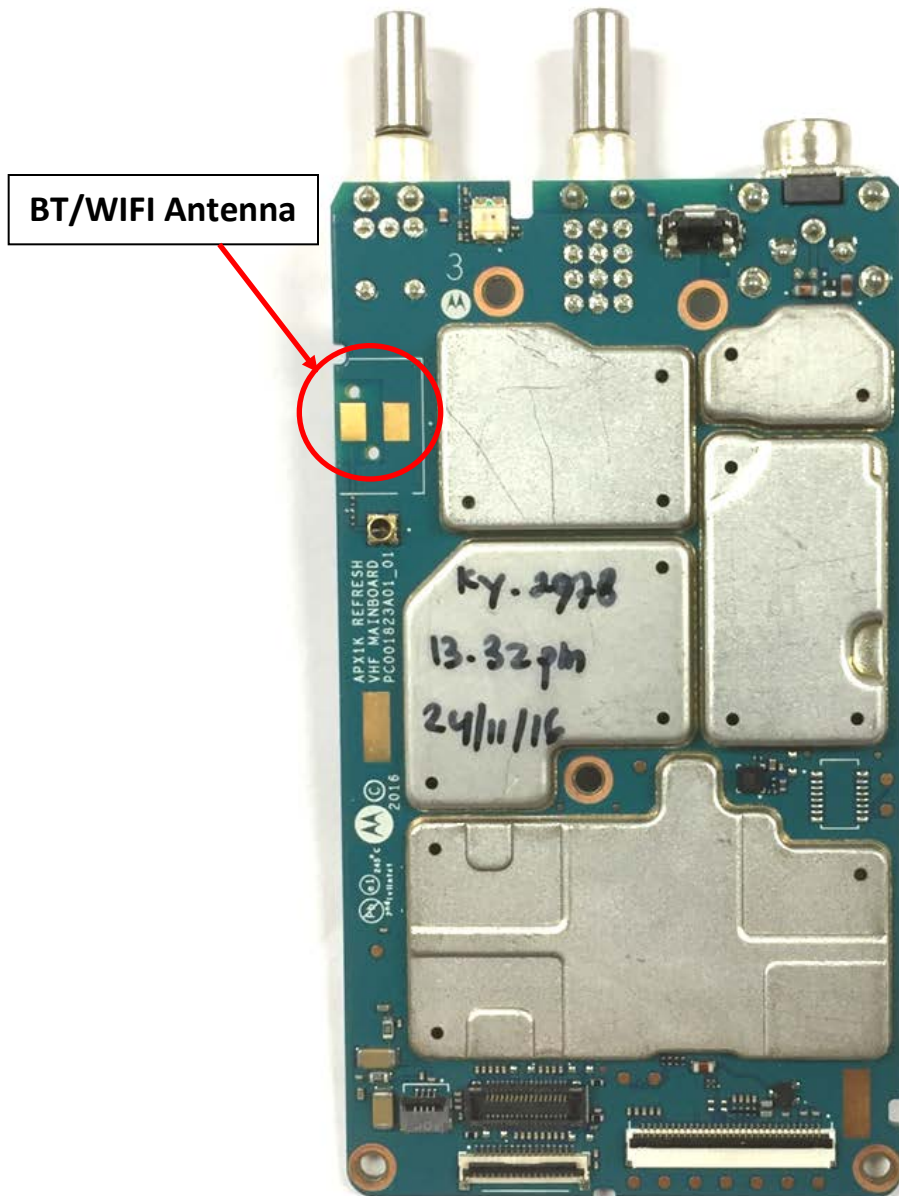
(Pursuant to FCC Part 2.1033(b)(7), 2.1033(c)(14) and RSP 100 Sec 4)

The following photographs are attached.

Exhibit

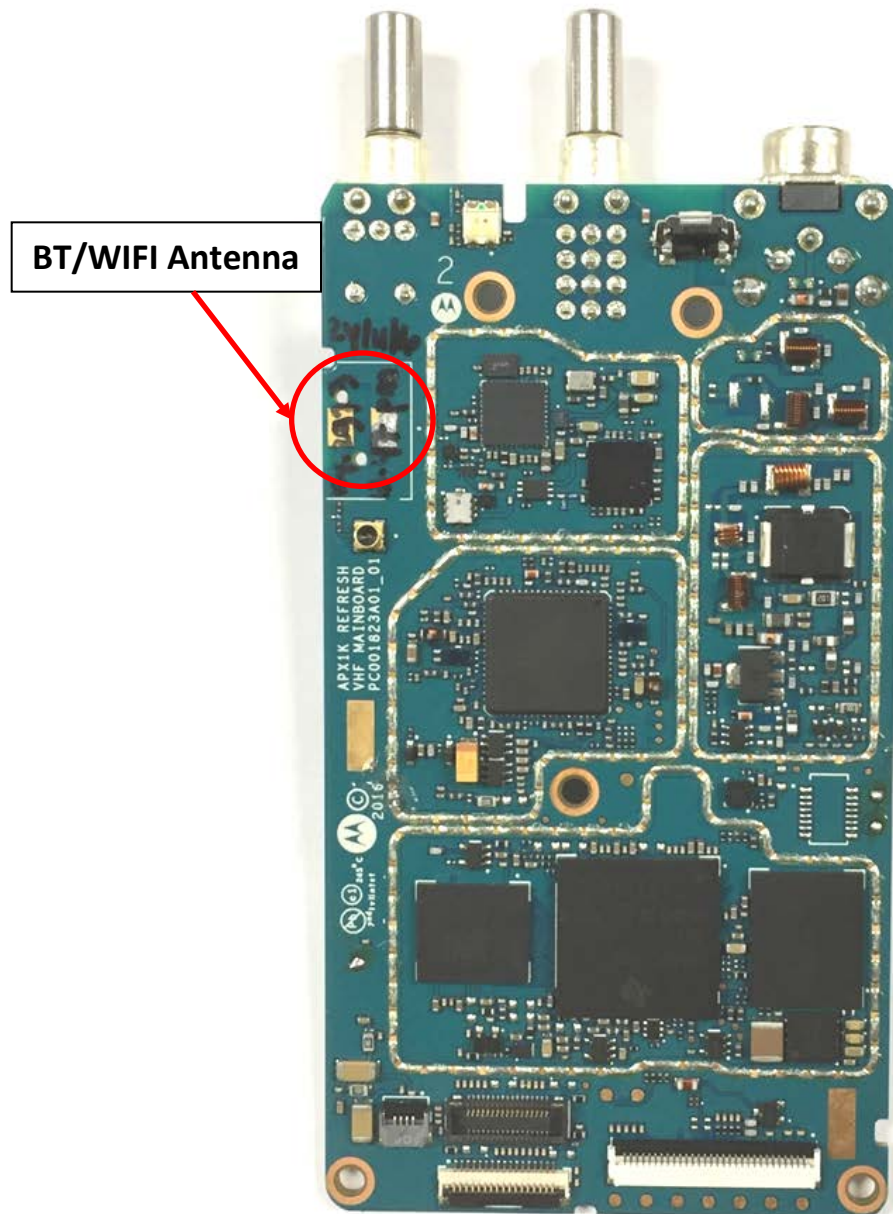
1. RF board with Shields (Top).	9A
2. RF board without Shields (Top).	9B
3. RF board with Shields (Bottom).	9C
4. RF board without Shields (Bottom).	9D
5. RF board with chassis and housing (front), Model 3	9E
6. Chassis and housing (back), Model 3	9F
7. RF board with chassis and housing (front), Model 2	9G
8. Chassis and housing (back), Model 2	9H
9. Keypad board (Top), Model 3	9I
10. Keypad board (Bottom), Model 3	9J
11. Keypad board (Top), Model 2	9K
12. Keypad board (Bottom), Model 2	9L
13. Interface Board (Top)	9M
14. Interface Board (Bottom)	9N
15. Exploded View of radio (Model 3)	9O
16. Exploded View of radio (Model 2)	9P

Exhibits 9A



RF board with Shields (Top)
(APX900)

Exhibit 9B



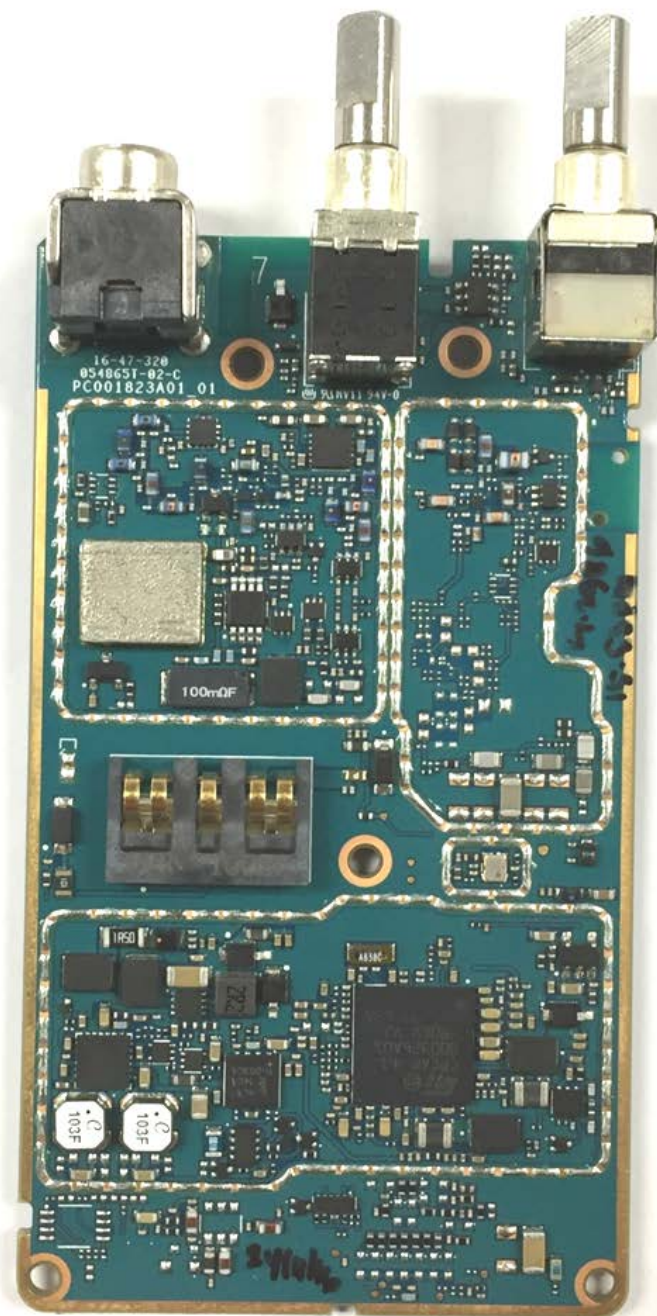
RF board without Shields (Top)
(APX900)

Exhibit 9C



RF board with Shields (Bottom)
(APX900)

Exhibit 9D



RF board without Shields (Bottom)
(APX900)

Exhibit 9E



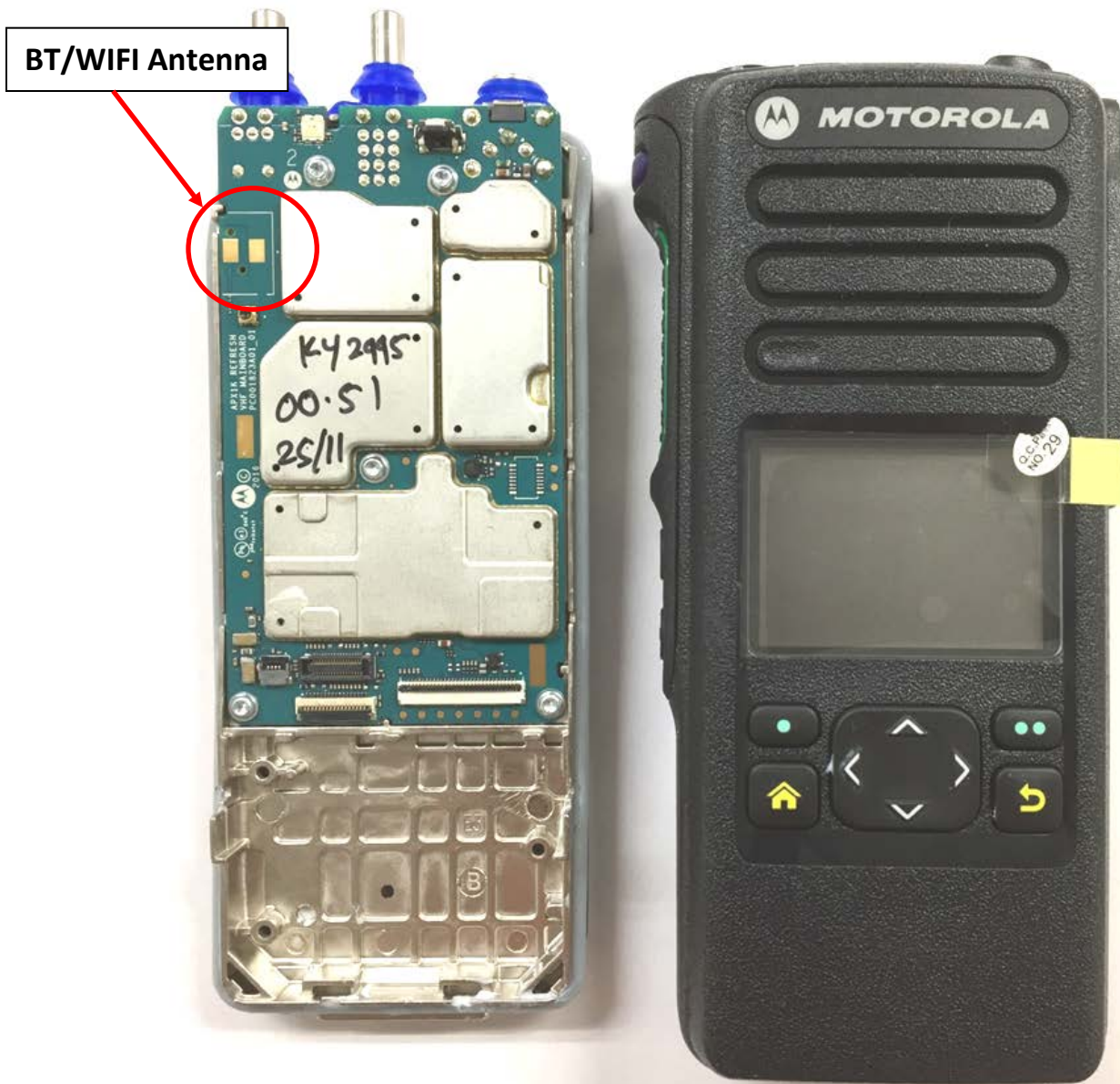
RF board with chassis and housing (front) Model 3
(APX900)

Exhibit 9F



Chassis and Housing (Back), Model 3
(APX900)

Exhibit 9G

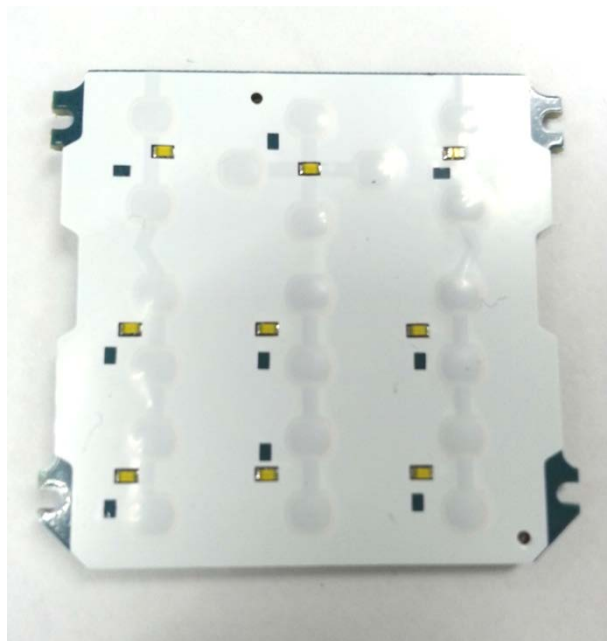


RF board with chassis and housing (front), Model 2
(APX900)

The image displays two views of the APX 900 device. On the left is the back cover, which is black and features a yellow SIM card slot, a QR code, and a 'DO NOT BLOCK VENT' warning. On the right is the internal view of the device, showing the green printed circuit board (PCB) with various components. A red circle highlights a white connector labeled 'BT/WIFI Antenna'.

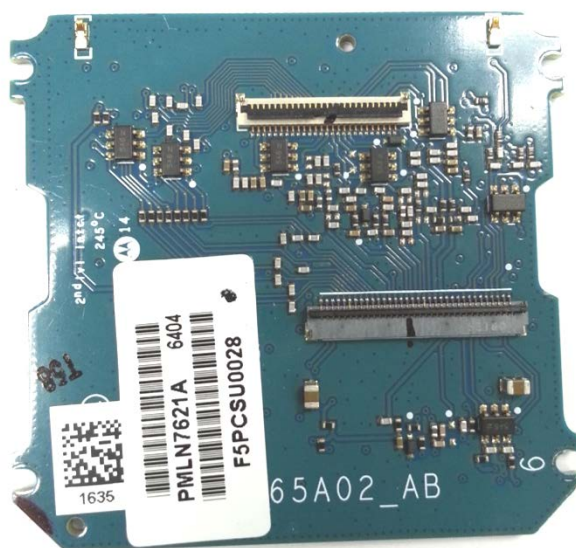
EXHIBIT 9
SHEET 9 OF 14

Exhibit 9I



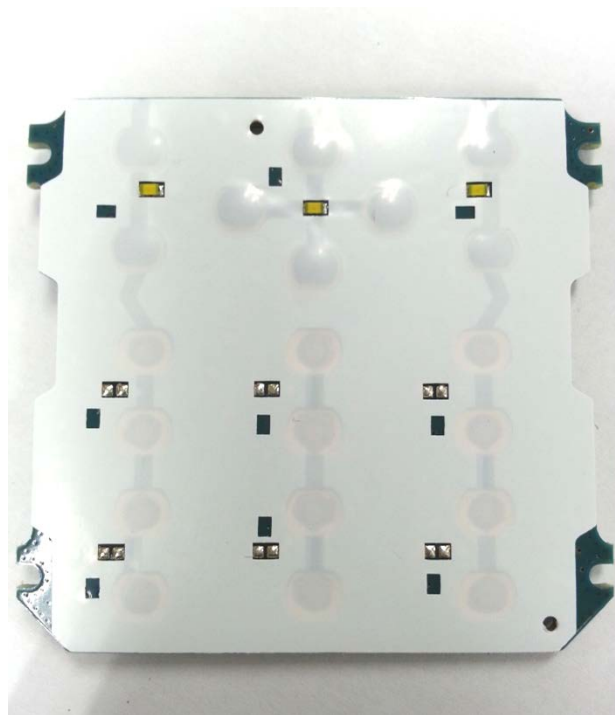
Keypad board (Top), Model 3
(APX900)

Exhibit 9J



Keypad board (Bottom), Model 3
(APX900)

Exhibit 9K



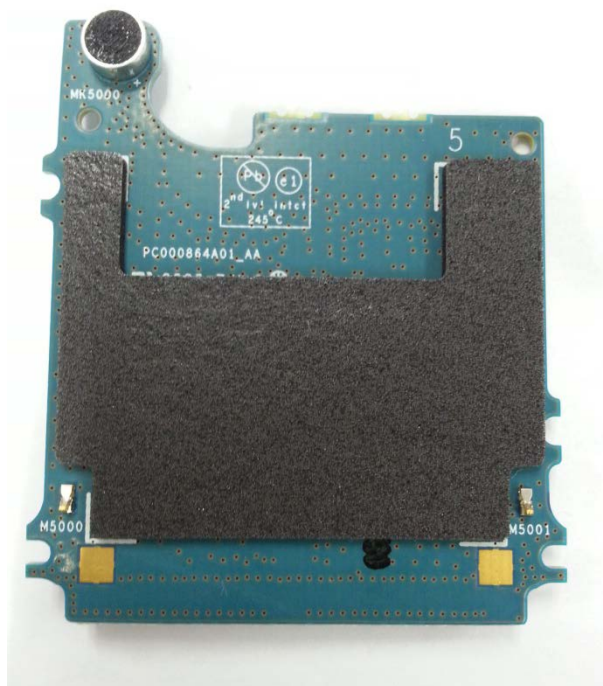
Keypad board (Top), Model 2
(APX900)

Exhibit 9L



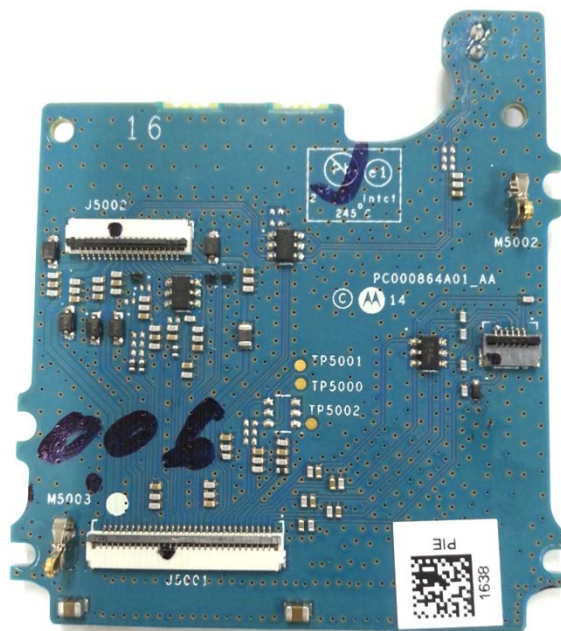
Keypad board (Bottom), Model 2
(APX900)

Exhibit 9M

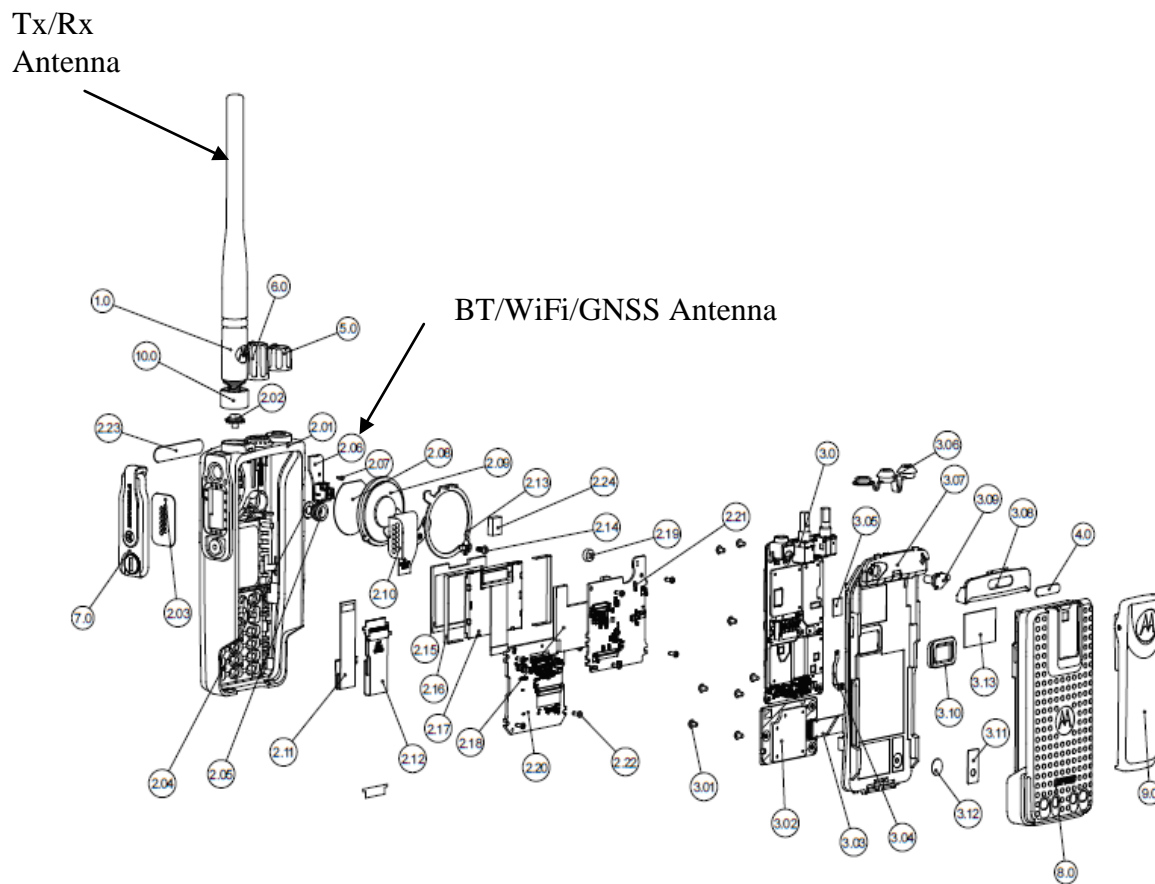


Interface board (Top)
(APX900)

Exhibit 9N



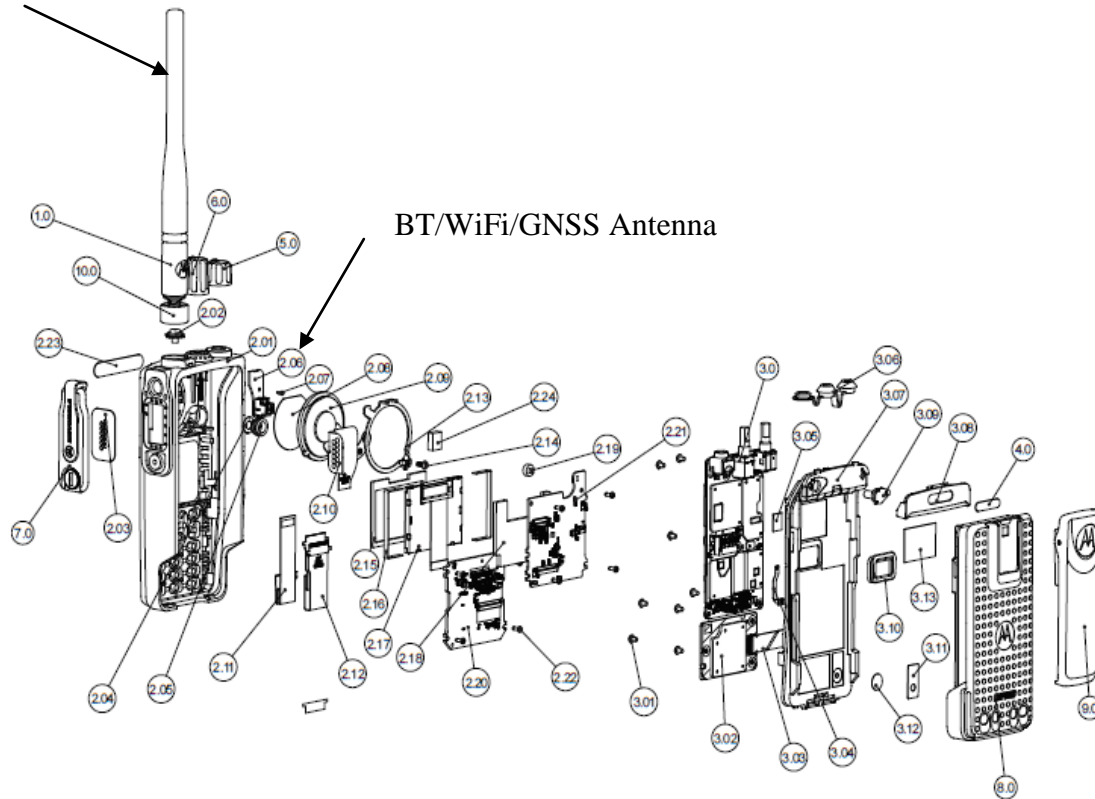
Interface board (Bottom)
(APX900)

Exhibit 90

Exploded View of Radio (Model 3)

Exhibit 9P

Tx/Rx
Antenna



Exploded View of Radio (Model 2)