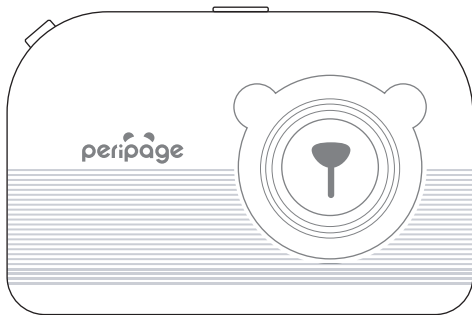


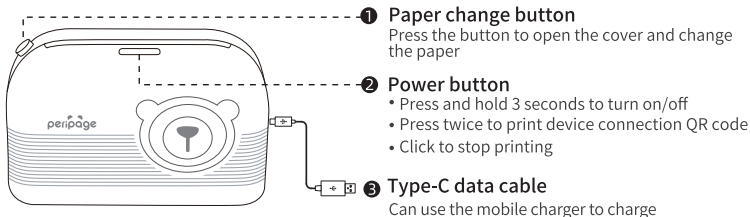
peripage



使用说明书 INSTRUCTION MANUAL

PeriPage Mini Printer

Product Sketch



Power Indicator Status

- Green light on: Fully charged / Normal use status.
- Red light on: Charging / Out of paper / Over-heat / Cover opened.
- Red light flash: Low power. It will cause the print to be light .Please charge in time.
- Orange light: Entered debug mode. Press and hold the power button to shut down and exit debug mode.

App Printing

- Step 1: Press and hold the power button for 3 seconds to turn on the printer.
- Step 2: Search 【PeriPage】 and download PeriPage App in the mobile app store.
- Step 3: Open the App, and search for the connected printer according to the prompts in the App. Or double click the power button to print the QR code, and scan the code with the App to connect to the printer.
(Tips: Don't connect printer in the mobile phone bluetooth settings.)
- Step 4: Select and edit the content to be printed in the App, confirm and print.

App download: Search for 【PeriPage】 on google play or App store, or scan the QR code to download App.



Download and install
【PeriPage】 App

Computer Printing

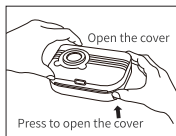
- Step 1: Press and hold the power button for 3 seconds to turn on the printer.
- Step 2: Connect the printer to computer with the original type-C data cable.
- Step 3: Visit the official website www.ileadtek.com to download and install printer driver.
- Step 4: When printing the required documents, select the printer to print.

Charging Instructions

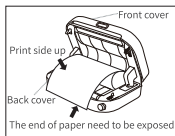
- 5V \rightleftharpoons 2A input charging. Recommended to use mobile phone adapter for charging .
- Recommended to fully charge for the first time.
- If it is not used for a long time, please charge it every 3 months to avoid long-term natural loss of lithium battery.

Operating ambient: 5°C-40°C ambient temperature, 45%-90%RH(Non condensing state).

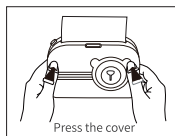
Open/Close Cover and Change Paper



❶ Open Cover

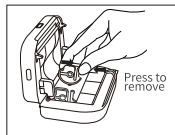
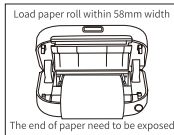
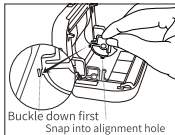


❷ Paper Loading

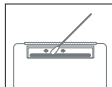


❸ Close Cover

Paper Holder Installation / Removal



Clean the Printer Head



- ❶ Please turn off the printer and take out the paper inside.
- ❷ Dip a cotton cloth or cotton swab with medical alcohol and wipe it gently from the center to periphery of the print head.
- ❸ Do not use the printer immediately after cleaning the print head.
Please wait 1- 2 minutes for the alcohol to completely evaporate.

Federal Communications Commission (FCC) Statement. This device complies with part 15 of the FCC Rules. Operation is subject to the following two conditions:

- (1) This device may not cause harmful interference, and
- (2) this device must accept any interference received,

including interference that may cause undesired operation. Note: This equipment has been tested and found to comply with the limits for a Class B digital device, pursuant to part 15 of the FCC Rules. These limits are designed to provide Reasonable protection against harmful interference in a residential installation. This equipment generates, uses and can radiate radio frequency energy and, if not installed and used in accordance with the instructions, may cause harmful interference to radio communications. However, there is no guarantee that interference will not occur in a particular installation. If this equipment does cause harmful interference to radio or television reception, which can be determined by turning the equipment off and on, the user is encouraged to try to correct the interference by one or more of the following measures:

- Reorient or relocate the receiving antenna.
- Increase the separation between the equipment and receiver.
- Connect the equipment into an outlet on a circuit different from that to which the receiver is connected.
- Consult the dealer or an experienced radio/TV technician for help.

Warning: Changes or modifications made to this device not expressly approved by **Xiamen iLead Tek Co., Ltd.** may void the FCC authorization to operate this device. Note: The manufacturer is not responsible for any radio or TV interference caused by unauthorized modifications to this equipment. Such modifications could void the user's authority to operate the equipment.

RF exposure statement:

This device complies with FCC RF radiation exposure limits set forth for an uncontrolled environment. The device is installed and operated without restriction.



视频教程 / Video Guide

厦门爱立得科技有限公司 Xiamen iLead Tek Co., Ltd.

厦门市软件园三期诚毅北大街50号2101单元01室
Room 01, Unit 2101, No.50 Chengyi North Street,
Software Park Phase III, Xiamen, Fujian, China

www.ileadtek.com service@ileadtek.com 400-8550-520