

# **Exhibit E**

# **User's Manual**

**ACER PERIPHERALS INC.**

**FCC ID.:JVP669620**

**COLOR SCANNER**

# SnapScan

## Quick reference



The complete picture.

## FCC INFORMATION

The Federal Communication Commission Radio Frequency Interference Statement includes the following paragraph:

This equipment has been tested and found to comply with the limits for a Class B Digital Device, pursuant to Part 15 of the FCC Rules. These limits are designed to provide reasonable protection against harmful interference in a residential installation. This equipment generates, uses and can radiate radio frequency energy and, if not installed and used in accordance with the instruction, may cause harmful interference to radio communication. However, there is no guarantee that interference will not occur in a particular installation. If this equipment does cause harmful interference to radio or television reception, which can be determined by turning the equipment off and on, the user is encouraged to try to correct the interference by one or more of the following measures:

- Reorient or relocate the receiving antenna.
- Increase the separation between the equipment and receiver.
- Connect the equipment into an outlet on a circuit different from that to which the receiver is connected.
- Consult the dealer or an experienced radio /TV technician for help.

The user should not modify or change this equipment without written approval from this company. Modification could void authority to use this equipment.

# IMPORTANT SAFETY INSTRUCTIONS

1. Read these instructions carefully. Save these instructions for future reference.
2. Follow all warnings and instructions marked on the product.
3. Unplug this product from the wall outlet before cleaning. Do not use liquid cleaners or aerosol cleaners. Use a damp cloth for cleaning.
4. Do not use this product near water.
5. Do not place this product on an unstable cart, stand, or table. The product may fall, causing serious damage to the product.
6. Openings in the cabinet and the bottom are provided for ventilation; to ensure reliable operation of the product and to protect it from overheating, these openings must not be blocked or covered. The openings should never be blocked by placing the product on a bed, sofa, rug, or other similar surface. This product should never be placed near or over a radiator or heat register, or in a built-in installation unless proper ventilation is provided.
7. This product should be operated from the type of power indicated on the marking label. If you are not sure of the type of power available, consult your dealer or local power company.
8. This product is equipped with a 3-wire grounding-type plug, a plug having a third (grounding) pin. This plug will only fit into a grounding-type power outlet. This is a safety feature. If you are unable to insert the plug into the outlet, contact your electrician to replace your obsolete outlet. Do not defeat the purpose of the grounding-type plug.
8. Do not allow anything to rest on the power cord. Do not locate this product where persons will walk on the cord.
9. If an extension cord is used with this product, make sure that the total ampere rating of the equipment plugged into the extension cord does not exceed the extension cord ampere rating. Also, make sure that the total rating of all products plugged into the wall outlet does not exceed the fuse rating.
10. Never push objects of any kind into this product through cabinet openings as they may touch dangerous voltage points or short out parts that could result in a fire or electric shock. Never spill liquid of any kind on the product.

11. Do not attempt to service this product yourself, as opening or removing covers may expose you to dangerous voltage points or other risks. Refer all servicing to qualified service personnel.
12. Unplug this product from the wall outlet and refer servicing to qualified service personnel under the following conditions:
  - a. When the power cord or plug is damaged or frayed
  - b. If liquid has been spilled into the product
  - c. If the product has been exposed to rain or water
  - d. If the product does not operate normally when the operating instructions are followed. Adjust only those controls that are covered by the operating instructions since improper adjustment of other controls may result in damage and will often require extensive work by a qualified technician to restore the product to normal condition.
  - e. If the product has been dropped or the cabinet has been damaged
  - f. If the product exhibits a distinct change in performance, indicating a need for service
13. Use only the proper type of power supply cord set (provided in your accessories box) for this unit. It should be a detachable type: UL listed/CSA certified, type SVT/SJT, rated 6A 125V minimum, VDE approved or its equivalent. Maximum length is 15 feet (4.6 meters).

## Unpacking the Scanner

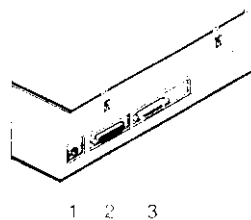
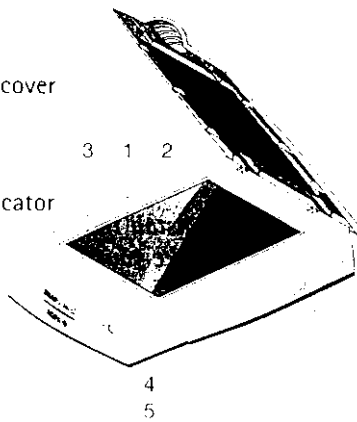
1. Open the packing box and carefully take out all the items.
2. Check each item to make sure that you have everything listed on the box and on the Packing List. Check if there is no visible defect. If something is missing, contact your dealer.
3. Remove the plastic wrapping and the packing materials from the scanner.


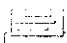
❖ *Note: Save the packing materials to protect the scanner during later transport.*

## Taking a Closer Look

Now that you have the scanner out of the box, take a closer look so that you become familiar with its parts. The figures illustrate the locations of the different parts of your SnapScan™ EZ.

1. glass plate
2. adjustable document cover
3. rulers
4. power switch
5. power and status indicator

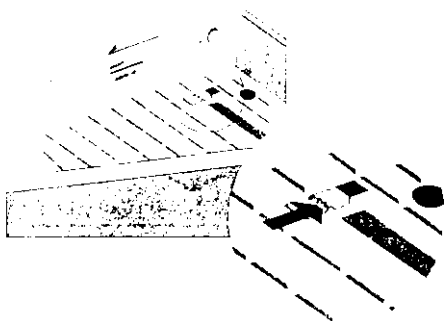


1. power connector
2. 25-pin interface plug (marked with a computer icon  ) for connection to your PC
3. 25-pin interface socket (marked with a printer icon  ) for connection to your printer

## Installing the Scanner

Before you switch on the scanner, you first have to unlock it.

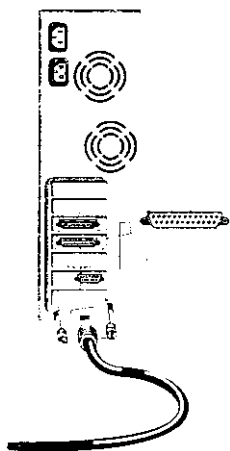
1. Place the scanner on a horizontal, flat surface and pull it carefully towards you until you can see the locking slider at the bottom.
  2. Slide the locking slider to the right.
- Your scanner is unlocked.




❖ *Note: If you want to transport your scanner, you have to lock it. To do this, first switch on the scanner so that its optical assembly moves to its home position. When the status indicator stops blinking, slide the locking slider to the left and switch off the scanner. Your scanner is now locked and ready for transportation.*

Now that you have unlocked your scanner, you can connect it to your computer.

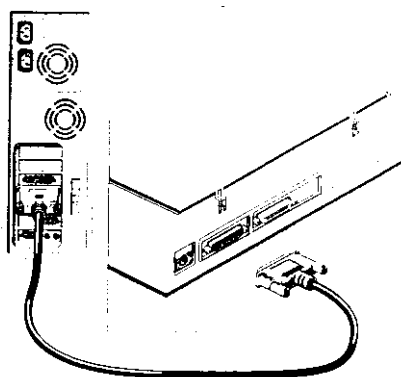
1. Switch off your computer and your printer and disconnect the power cords.
2. Remove the printer cable from the printer port of your computer.
3. Put the plug of the Parallel Interface cable into the printer port of your computer.

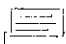


**Caution:** Make sure to plug the Parallel Interface cable into the printer port and not into any other resembling port. If damage caused by wrong connection occurs, warranty will be voided.

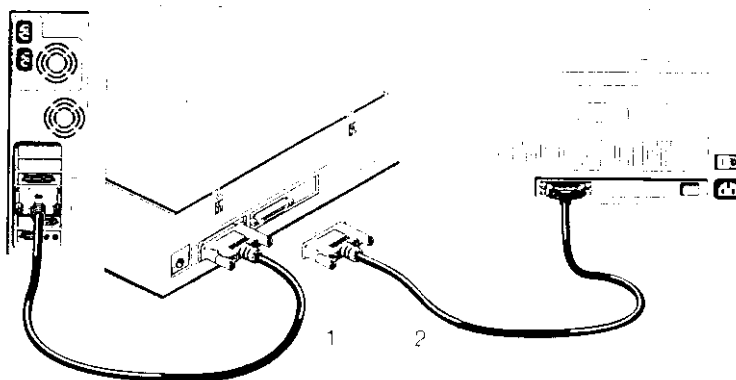
4. Connect the socket of the Parallel Interface cable to the plug (marked with a computer icon ) at the rear of the scanner.

❖ *Note: Do not forget to secure the connection by tightening the connector screws.*



5. Connect the printer cable to the socket (marked with a printer icon ) at the rear of the scanner.

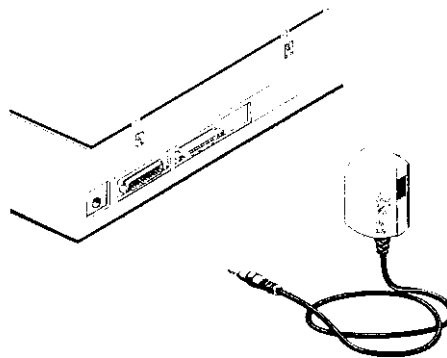
❖ *Note: Do not forget to secure the connection by tightening the connector screws.*



1. Parallel Interface cable  
2. printer cable



6. Connect the power cord to your computer and your printer.
7. Connect the AC-adaptor to your scanner.



8. Switch on your scanner.

The scanner performs a self-test during which the status indicator blinks slowly. This takes about 15 seconds. After the self-test the status indicator remains on.

❖ *Note: If a malfunction is detected during the self-test, that is, if the status indicator starts blinking at a higher frequency, refer to the Troubleshooting section at the end of this manual.*

9. Switch on your computer and your printer.

## Windows 95 and Windows NT 4.0

### Installing the Software

1. Switch on your scanner and your computer.
2. Insert the Software Collection I CD-ROM in your CD-ROM drive.  
Windows should detect the CD-ROM and then automatically run the installation program. If it does not run the program, first double-click the CD-ROM icon in 'My Computer' and then double-click softcol.exe.
3. Follow the instructions on your screen and install iPhoto Express™ (the image editing software).
4. Remove the CD-ROM from your CD-ROM drive.
5. Insert the Agfa Scanners CD-ROM into your CD-ROM drive.

Windows should detect the CD-ROM and then automatically run the installation program. If it does not run the program, first double-click the CD-ROM icon in 'My Computer' and then double-click agfascan.exe.

6. Click your language: English.

You will be asked if you want to install Acrobat™. You need Acrobat to read your documentation.

7. Select your scanner from the list.

8. Click Install software.

9. Click Register.

You can either register electronically or you can print out the registration form and send it to the correct address.

❖ *Note: You can find the product serial number at the rear of your scanner.*

10. Install FotoLook™ (the professional scanner driver) and/or FotoSnap™ (the easy-to-use scanner driver) by following the instructions on your screen.

When the software installation is finished, you will be asked to restart your computer. After restarting your PC, the scanner is ready for use.

For the latest up-to-date information, refer to the FotoLook Read Me file and the FotoSnap Read Me file on your computer.

## Installing Additional Software

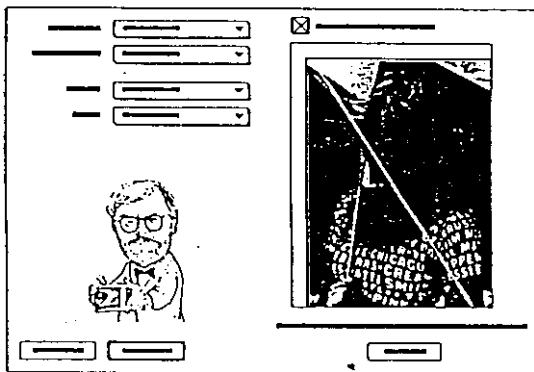
To install additional software, insert the Software Collection II CD-ROM and follow the instructions on your screen.

For a general overview of the additional software and for the location of the documentation, please refer to the Navigation Map which is supplied with your scanner.

## First scan

### Apple Macintosh

1. Place a color reflective original face down on the reflective glass plate.
2. Open Color It!.  
The Untitled window appears.
3. Choose FotoSnap PS 2.0x from the Scan/Import menu item in the File menu.  
The FotoSnap window appears.



4. Choose Color RGB from the Mode pop-up menu.
5. Choose Photograph from the Original pop-up menu.
6. Choose Monitor from the Output pop-up menu.
7. Choose 100% from the Scale to pop-up menu.
8. Click Preview.  
The scanner quickly makes a low-resolution scan of the original in the mode you have selected. The preview is displayed in the Preview window.

9. Select the area for scanning by manipulating the selection rectangle within the Preview window.

You can change the dimensions of the selection by dragging the handles of the selection rectangle. You also can move the selection by dragging from its center. To reset the selection frame to its maximum size, double-click anywhere within the Preview window.

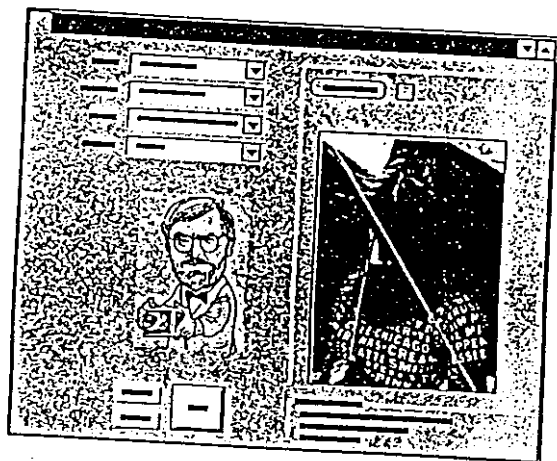
10. Click Scan.

The image appears in your Color It! window.

Refer to the FotoSnap User's Guide for other options in FotoSnap PS v2.0x.

## Windows 3.x

1. Place a color reflective original face down on the reflective glass plate.
2. Open ImagePals GO!.
3. Choose select TWAIN Source from the Acquire menu item in the File menu.  
The Select Source window appears.
4. Select FotoSnap v2.0x - Twain.
5. Click Select.
6. Choose Twain from the Acquire menu item in the File menu.  
The FotoSnap v2.0x - Twain window appears.



7. Choose Color RGB from the Mode pop-up menu.
8. Choose Photograph from the Original pop-up menu.
9. Choose Monitor from the Output pop-up menu.
10. Choose 100% from the Scale to pop-up menu.
11. Click Preview.

The scanner quickly makes a low-resolution scan of the original in the mode you have selected. The preview is displayed in the Preview window.

12. Select the area for scanning by manipulating the selection rectangle within the Preview window.

You can change the dimensions of the selection by dragging the handles of the selection rectangle. You also can move the selection by dragging from its center. To reset the selection frame to its maximum size, double-click anywhere within the Preview window.

13. Click Scan.

The image appears in your ImagePals GO! window.

Refer to the FotoSnap User's Guide for other options in FotoSnap.

## Windows 95

1. Open PhotoImpact SE.
2. Choose Select Source from the Acquire menu item in the File menu.

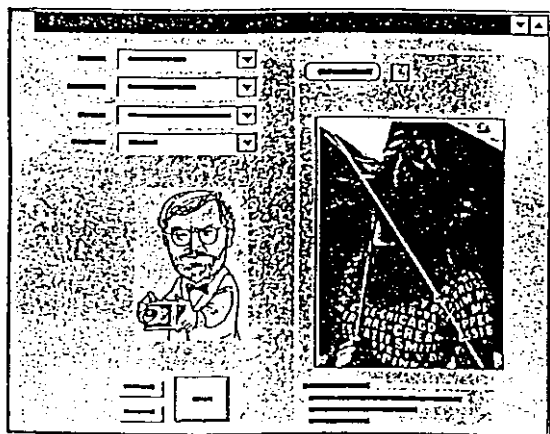
The Select Source window appears.

3. Select FotoSnap v2.0x - Twain.
4. Click OK.
5. Choose Image from the Acquire menu item in the File menu.

The Acquire Image window appears.

6. Click Acquire.

The FotoSnap v2.0x - Twain window appears.



7. Choose Color RGB from the Mode pop-up menu.
8. Choose Photograph from the Original pop-up menu.
9. Choose Monitor from the Output pop-up menu.
10. Choose 100% from the Scale to pop-up menu.
11. Click Preview.

The scanner quickly makes a low-resolution scan of the original in the mode you have selected. The preview is displayed in the Preview window.

12. Select the area for scanning by manipulating the selection rectangle within the Preview window.

You can change the dimensions of the selection by dragging the handles of the selection rectangle. You also can move the selection by dragging from its center. To reset the selection frame to its maximum size, double-click anywhere within the Preview window.

13. Click Scan.

The image appears in your PhotoImpact window.

Refer to the FotoSnap User's Guide for other options in FotoSnap.