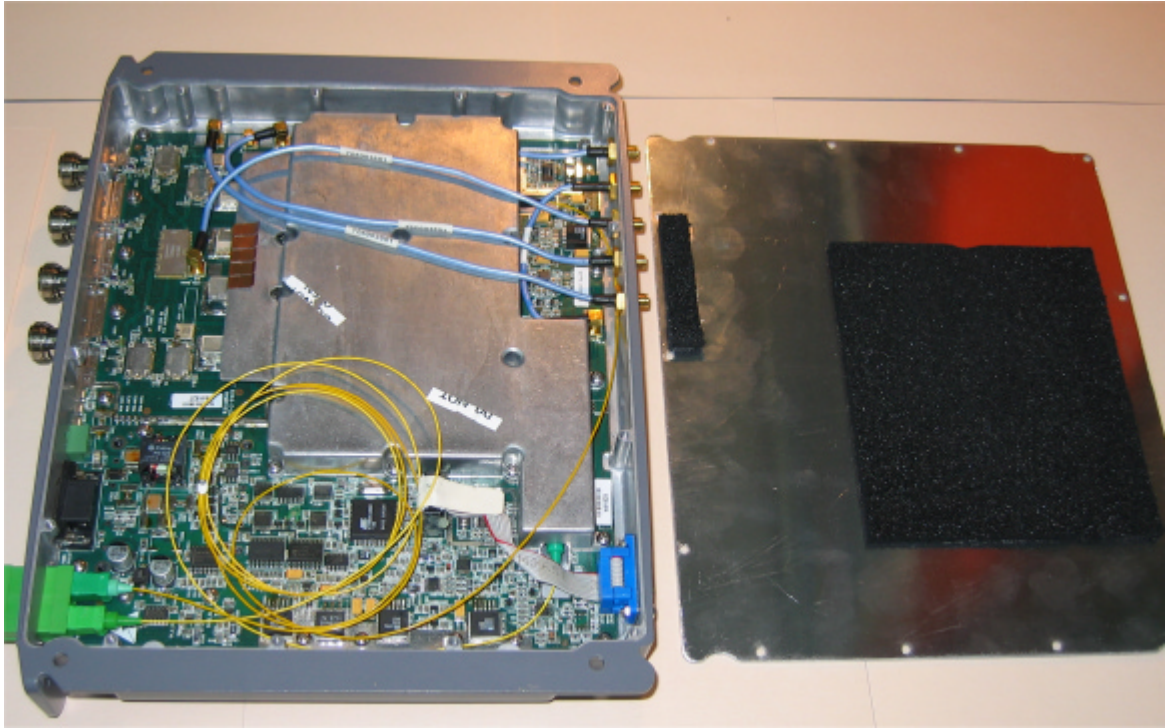


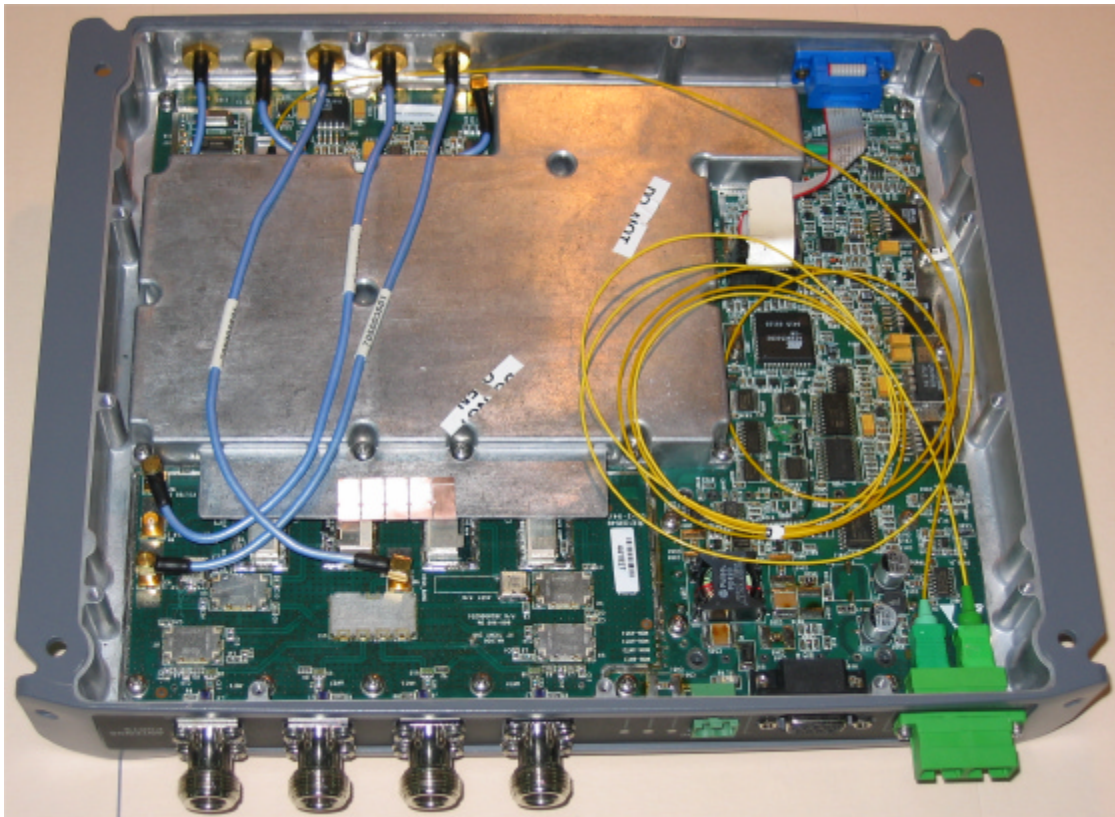
INTERNAL PHOTOGRAPHS

This document contains 7 photographs

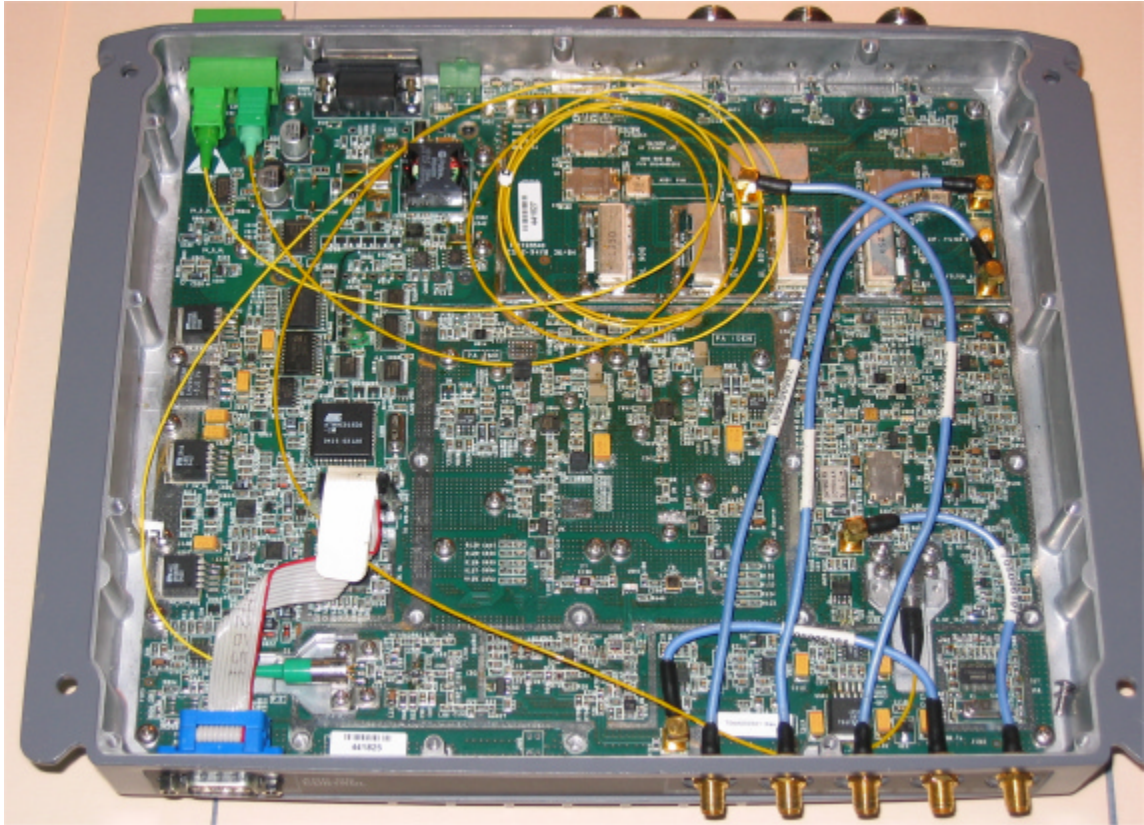
Photograph No.1
internal view



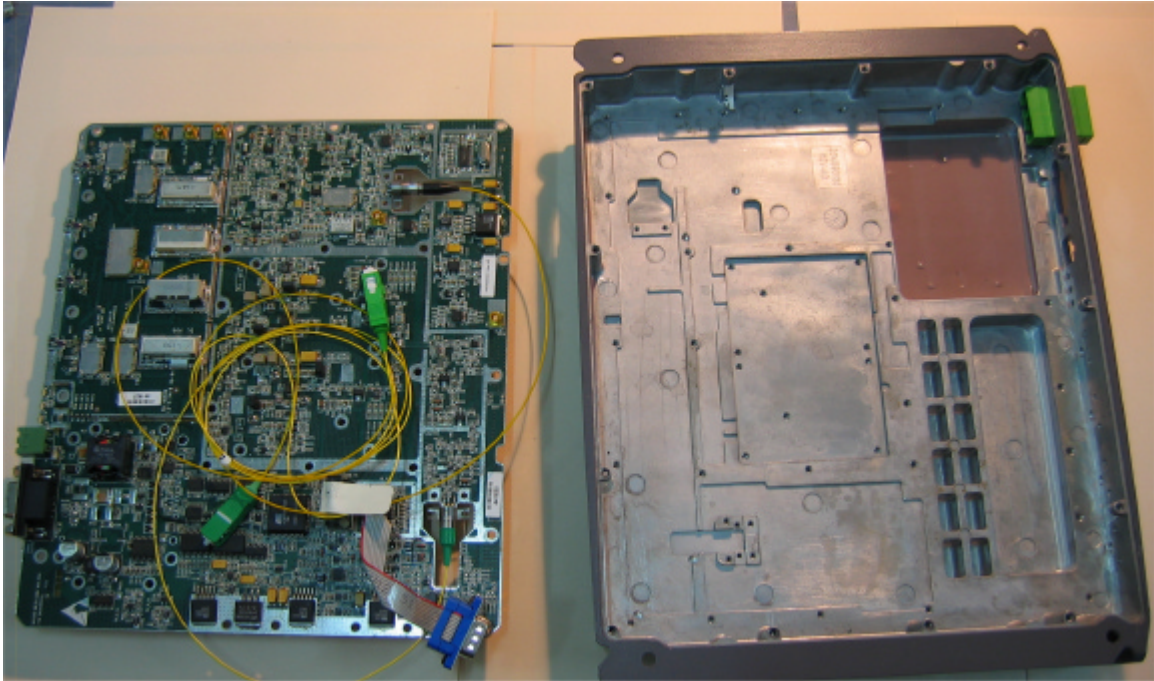
Photograph No.2
Internal view



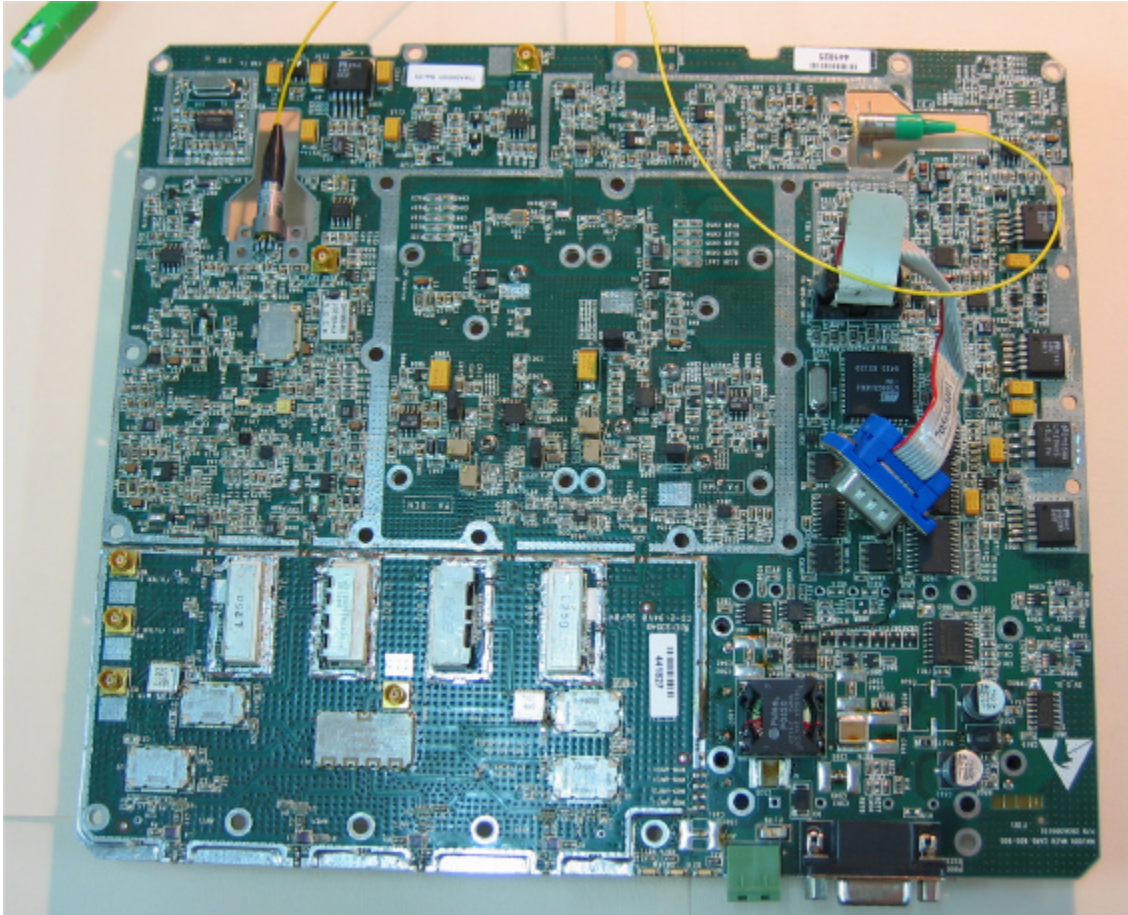
Photograph No.3
Internal view without shields



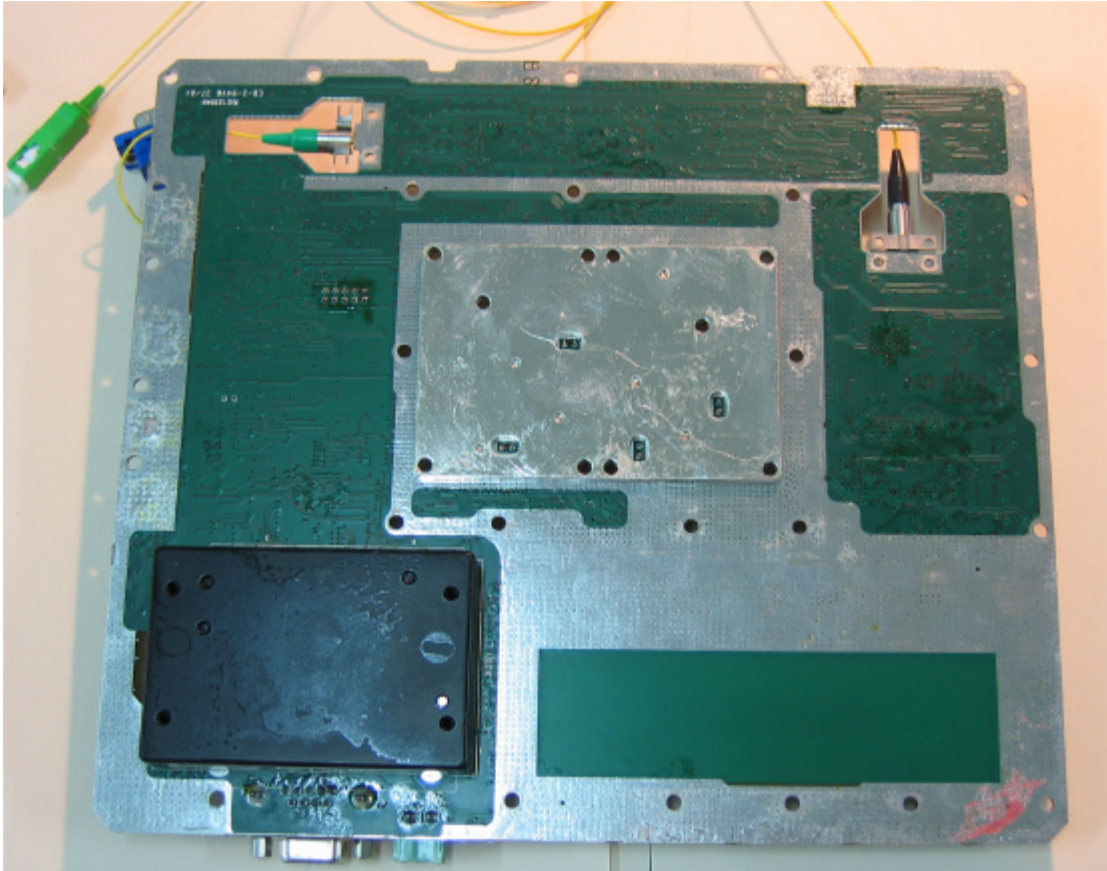
Photograph No.4
PCB with the case view



Photograph No.5
PCB component side view



Photograph No.6
PCB printed side view



Photograph No.7
PCB printed side view without shield

