



SGS-CSTC Standards Technical Services Co., Ltd.
Shenzhen Branch

No. 1 Workshop, M-10, Middle section, Science & Technology Park,
Shenzhen, Guangdong, China 518057

Telephone: +86 (0) 755 2601 2053
Fax: +86 (0) 755 2671 0594
Email: ee.shenzhen@sgs.com

Report No.: SZEM170400297001
Page: 1 of 83

TEST REPORT

Application No.: SZEM1704002970CR
Applicant: Winners'Sun Plastic & Electronic (Shenzhen) Co., Ltd
Address of Applicant: Zone E, Ying Tai Industrial Park, Dalang, Longhua Town, Bao An District, Shenzhen, Guang Dong Providence, China
Manufacturer: Winners'Sun Plastic & Electronic (Shenzhen) Co., Ltd
Address of Manufacturer: Zone E, Ying Tai Industrial Park, Dalang, Longhua Town, Bao An District, Shenzhen, Guang Dong Providence, China
Factory: Winners'Sun Plastic & Electronic (Shenzhen) Co., Ltd
Address of Factory: Zone E, Ying Tai Industrial Park, Dalang, Longhua Town, Bao An District, Shenzhen, Guang Dong Providence, China
Equipment Under Test (EUT):
EUT Name: Tripod Selfie Stick
Model No.: WS-SQB641, WS-SQB645B ♣
♣ Please refer to section 2 of this report which indicates which model was actually tested and which were electrically identical.
Trade mark: Dispho
FCC ID: UR9WS-SQB627BT
Standards: 47 CFR Part 15, Subpart C 15.247
Date of Receipt: 2017-04-11
Date of Test: 2017-04-13 to 2017-04-18
Date of Issue: 2017-04-25

Test Result :	Pass*
----------------------	--------------

* In the configuration tested, the EUT complied with the standards specified above.



Jack Zhang
EMC Laboratory Manager

The manufacturer should ensure that all products in series production are in conformity with the product sample detailed in this report. If the product in this report is used in any configuration other than that detailed in the report, the manufacturer must ensure the new system complies with all relevant standards. Any mention of SGS International Electrical Approvals or testing done by SGS International Electrical Approvals in connection with, distribution or use of the product described in this report must be approved by SGS International Electrical Approvals in writing.

This document is issued by the Company subject to its General Conditions of Service printed overleaf, available on request or accessible at <http://www.sgs.com/en/Terms-and-Conditions.aspx> and, for electronic format documents, subject to Terms and Conditions for Electronic Documents at <http://www.sgs.com/en/Terms-and-Conditions/Terms-e-Documents.aspx>. Attention is drawn to the limitation of liability, indemnification and jurisdiction issues defined therein. Any holder of this document is advised that information contained hereon reflects the Company's findings at the time of its intervention only and within the limits of Client's instructions, if any. The Company's sole responsibility is to its Client and this document does not exonerate parties to a transaction from exercising all their rights and obligations under the transaction documents. This document cannot be reproduced except in full, without prior written approval of the Company. Any unauthorized alteration, forgery or falsification of the content or appearance of this document is unlawful and offenders may be prosecuted to the fullest extent of the law. Unless otherwise stated the results shown in this test report refer only to the sample(s) tested and such sample(s) are retained for 30 days only.



Revision Record				
Version	Chapter	Date	Modifier	Remark
01		2017-04-25		Original

Authorized for issue by:			
Tested By			2017-04-18
		Bill Chen /Project Engineer	Date
Checked By			2017-04-25
		Eric Fu /Reviewer	Date

2 Test Summary

Radio Spectrum Technical Requirement				
Item	Standard	Method	Requirement	Result
Antenna Requirement	47 CFR Part 15, Subpart C 15.247	N/A	47 CFR Part 15, Subpart C 15.203 & 15.247(c)	Pass
Other requirements Frequency Hopping Spread Spectrum System Hopping Sequence	47 CFR Part 15, Subpart C 15.247	N/A	47 CFR Part 15, Subpart C 15.247(a)(1),(g),(h)	Pass

Radio Spectrum Matter Part				
Item	Standard	Method	Requirement	Result
Conducted Disturbance at AC Power Line(150kHz-30MHz)	47 CFR Part 15, Subpart C 15.247	ANSI C63.10 (2013) Section 6.2	47 CFR Part 15, Subpart C 15.207	Pass
20dB Bandwidth	47 CFR Part 15, Subpart C 15.247	ANSI C63.10 (2013) Section 7.8.7	47 CFR Part 15, Subpart C 15.247(a)(1)	Pass
Conducted Peak Output Power	47 CFR Part 15, Subpart C 15.247	ANSI C63.10 (2013) Section 7.8.5	47 CFR Part 15, Subpart C 15.247(b)(1)	Pass
Carrier Frequencies Separation	47 CFR Part 15, Subpart C 15.247	ANSI C63.10 (2013) Section 7.8.2	47 CFR Part 15, Subpart C 15.247a(1)	Pass
Hopping Channel Number	47 CFR Part 15, Subpart C 15.247	ANSI C63.10 (2013) Section 7.8.3	47 CFR Part 15, Subpart C 15.247a(1)(iii)	Pass
Dwell Time	47 CFR Part 15, Subpart C 15.247	ANSI C63.10 (2013) Section 7.8.4	47 CFR Part 15, Subpart C 15.247a(1)(iii)	Pass
Conducted Spurious Emissions	47 CFR Part 15, Subpart C 15.247	ANSI C63.10 (2013) Section 7.8.8	47 CFR Part 15, Subpart C 15.247(d)	Pass
Radiated Spurious Emissions	47 CFR Part 15, Subpart C 15.247	ANSI C63.10 (2013) Section 6.4,6.5,6.6	47 CFR Part 15, Subpart C 15.205 & 15.209	Pass
Radiated Emissions which fall in the restricted bands	47 CFR Part 15, Subpart C 15.247	ANSI C63.10 (2013) Section 6.10.5	47 CFR Part 15, Subpart C 15.205 & 15.209	Pass
Conducted Band Edges Measurement	47 CFR Part 15, Subpart C 15.247	ANSI C63.10 (2013) Section 7.8.6	47 CFR Part 15, Subpart C 15.247(d)	Pass



Remark:

Model No.: WS-SQB641, WS-SQB645B

Only the model WS-SQB641 was tested, since the electrical circuit design, layout, components used, internal wiring and functions were identical for all the above models, with only difference on the surface shape a little difference.



3 Contents

	Page
1 COVER PAGE	1
2 TEST SUMMARY	3
3 CONTENTS	5
4 GENERAL INFORMATION	7
4.1 DETAILS OF E.U.T.	7
4.2 DESCRIPTION OF SUPPORT UNITS	9
4.3 MEASUREMENT UNCERTAINTY	9
4.4 TEST LOCATION	10
4.5 TEST FACILITY	10
4.6 DEVIATION FROM STANDARDS	10
4.7 ABNORMALITIES FROM STANDARD CONDITIONS	10
5 EQUIPMENT LIST	11
6 RADIO SPECTRUM TECHNICAL REQUIREMENT	14
6.1 ANTENNA REQUIREMENT	14
6.1.1 Test Requirement:	14
6.1.2 Conclusion	14
6.2 OTHER REQUIREMENTS FREQUENCY HOPPING SPREAD SPECTRUM SYSTEM HOPPING SEQUENCE	15
6.2.1 Test Requirement:	15
6.2.2 Conclusion	15
7 RADIO SPECTRUM MATTER TEST RESULTS	17
7.1 CONDUCTED DISTURBANCE AT AC POWER LINE(150kHz-30MHz)	17
7.1.1 E.U.T. Operation	18
7.1.2 Test Setup Diagram	18
7.1.3 Measurement Data	18
7.2 20dB BANDWIDTH	21
7.2.1 E.U.T. Operation	21
7.2.2 Test Setup Diagram	21
7.2.3 Measurement Data	21
7.3 CONDUCTED PEAK OUTPUT POWER	22
7.3.1 E.U.T. Operation	23
7.3.2 Test Setup Diagram	23
7.3.3 Measurement Data	23
7.4 CARRIER FREQUENCIES SEPARATION	24
7.4.1 E.U.T. Operation	24
7.4.2 Test Setup Diagram	24
7.4.3 Measurement Data	24
7.5 HOPPING CHANNEL NUMBER	25
7.5.1 E.U.T. Operation	26
7.5.2 Test Setup Diagram	26
7.5.3 Measurement Data	26
7.6 DWELL TIME	27
7.6.1 E.U.T. Operation	28
7.6.2 Test Setup Diagram	28
7.6.3 Measurement Data	28
7.7 CONDUCTED SPURIOUS EMISSIONS	29



7.7.1	E.U.T. Operation.....	30
7.7.2	Test Setup Diagram.....	30
7.7.3	Measurement Data.....	30
7.8	RADIATED SPURIOUS EMISSIONS.....	31
7.8.1	E.U.T. Operation.....	32
7.8.2	Test Setup Diagram.....	32
7.8.3	Measurement Data.....	33
7.9	RADIATED EMISSIONS WHICH FALL IN THE RESTRICTED BANDS.....	41
7.9.1	E.U.T. Operation.....	41
7.9.2	Test Setup Diagram.....	42
7.9.3	Measurement Data.....	42
7.10	CONDUCTED BAND EDGES MEASUREMENT.....	47
7.10.1	E.U.T. Operation.....	47
7.10.2	Test Setup Diagram.....	47
7.10.3	Measurement Data.....	47
8	PHOTOGRAPHS.....	48
8.1	CONDUCTED DISTURBANCE AT AC POWER LINE(150kHz-30MHz) TEST SETUP.....	48
8.2	RADIATED SPURIOUS EMISSIONS TEST SETUP.....	49
8.3	ANTENNA REQUIREMENT TEST SETUP.....	50
8.4	EUT CONSTRUCTIONAL DETAILS.....	51
9	APPENDIX.....	58
9.1	APPENDIX 15.247.....	58-83



4 General Information

4.1 Details of E.U.T.

Frequency Range:	2402MHz to 2480MHz
Bluetooth Version:	V3.0
Modulation Type:	GFSK
Number of Channels:	79
Sample Type:	Portable production
Antenna Type:	Built-in antenna
Antenna Gain:	2.3dBi
Power supply:	Rechargeable battery:DC 3.7V 0.24Wh(Charge by USB)



Operation Frequency each of channel

Channel	Frequency	Channel	Frequency	Channel	Frequency	Channel	Frequency
0	2402MHz	20	2422MHz	40	2442MHz	60	2462MHz
1	2403MHz	21	2423MHz	41	2443MHz	61	2463MHz
2	2404MHz	22	2424MHz	42	2444MHz	62	2464MHz
3	2405MHz	23	2425MHz	43	2445MHz	63	2465MHz
4	2406MHz	24	2426MHz	44	2446MHz	64	2466MHz
5	2407MHz	25	2427MHz	45	2447MHz	65	2467MHz
6	2408MHz	26	2428MHz	46	2448MHz	66	2468MHz
7	2409MHz	27	2429MHz	47	2449MHz	67	2469MHz
8	2410MHz	28	2430MHz	48	2450MHz	68	2470MHz
9	2411MHz	29	2431MHz	49	2451MHz	69	2471MHz
10	2412MHz	30	2432MHz	50	2452MHz	70	2472MHz
11	2413MHz	31	2433MHz	51	2453MHz	71	2473MHz
12	2414MHz	32	2434MHz	52	2454MHz	72	2474MHz
13	2415MHz	33	2435MHz	53	2455MHz	73	2475MHz
14	2416MHz	34	2436MHz	54	2456MHz	74	2476MHz
15	2417MHz	35	2437MHz	55	2457MHz	75	2477MHz
16	2418MHz	36	2438MHz	56	2458MHz	76	2478MHz
17	2419MHz	37	2439MHz	57	2459MHz	77	2479MHz
18	2420MHz	38	2440MHz	58	2460MHz	78	2480MHz
19	2421MHz	39	2441MHz	59	2461MHz		

Note:

In section 15.31(m), regards to the operating frequency range over 10 MHz, the Lowest frequency, the middle

frequency, and the highest frequency of channel were selected to perform the test, and the selected channel see below:

Channel	Frequency
The Lowest channel	2402MHz
The Middle channel	2441MHz
The Highest channel	2480MHz

4.2 Description of Support Units

The EUT has been tested with associated equipment below.

Description	Manufacturer	Model No.
Laptop	Lenovo	T430u
Test board	Supply to SGS	FT232

4.3 Measurement Uncertainty

No.	Item	Measurement Uncertainty
1	Radio Frequency	7.25 x 10 ⁻⁸
2	Timeout	2s
3	Duty cycle	0.37%
4	Occupied Bandwidth	3%
5	RF conducted power	0.75dB
6	RF power density	2.84dB
7	Conducted Spurious emissions	0.75dB
8	RF Radiated power	4.5dB (below 1GHz)
		4.8dB (above 1GHz)
9	Radiated Spurious emission test	4.5dB (30MHz-1GHz)
		4.8dB (1GHz-18GHz)
10	Temperature test	1 °C
11	Humidity test	3%
12	Supply voltages	1.5%
13	Time	3%



4.4 Test Location

All tests were performed at:

SGS-CSTC Standards Technical Services Co., Ltd., Shenzhen Branch

No. 1 Workshop, M-10, Middle Section, Science & Technology Park, Shenzhen, Guangdong, China. 518057.

Tel: +86 755 2601 2053 Fax: +86 755 2671 0594

No tests were sub-contracted.

4.5 Test Facility

The test facility is recognized, certified, or accredited by the following organizations:

- **CNAS (No. CNAS L2929)**

CNAS has accredited SGS-CSTC Standards Technical Services Co., Ltd. Shenzhen Branch EMC Lab to ISO/IEC 17025:2005 General Requirements for the Competence of Testing and Calibration Laboratories (CNAS-CL01 Accreditation Criteria for the Competence of Testing and Calibration Laboratories) for the competence in the field of testing.

- **A2LA (Certificate No. 3816.01)**

SGS-CSTC Standards Technical Services Co., Ltd., Shenzhen EMC Laboratory is accredited by the American Association for Laboratory Accreditation(A2LA). Certificate No. 3816.01.

- **VCCI**

The 10m Semi-anechoic chamber and Shielded Room of SGS-CSTC Standards Technical Services Co., Ltd. have been registered in accordance with the Regulations for Voluntary Control Measures with Registration No.: G-823, R-4188, T-1153 and C-2383 respectively.

- **FCC – Registration No.: 556682**

SGS-CSTC Standards Technical Services Co., Ltd., Shenzhen EMC Laboratory has been registered and fully described in a report filed with the (FCC) Federal Communications Commission. The acceptance letter from the FCC is maintained in our files. Registration No.: 556682.

- **Industry Canada (IC)**

Two 3m Semi-anechoic chambers and the 10m Semi-anechoic chamber of SGS-CSTC Standards Technical Services Co., Ltd. Shenzhen Branch EMC Lab have been registered by Certification and Engineering Bureau of Industry Canada for radio equipment testing with Registration No.: 4620C-1, 4620C-2, 4620C-3.

4.6 Deviation from Standards

None

4.7 Abnormalities from Standard Conditions

None



5 Equipment List

RE in Chamber					
Test Equipment	Manufacturer	Model No.	Inventory No.	Cal. Date (yyyy-mm-dd)	Cal. Due date (yyyy-mm-dd)
3m Semi-Anechoic Chamber	ETS-LINDGREN	N/A	SEM001-01	2016-05-13	2017-05-13
EMI Test Receiver	Agilent Technologies	N9038A	SEM004-05	2016-10-09	2017-10-09
BiConiLog Antenna (26-3000MHz)	ETS-LINDGREN	3142C	SEM003-01	2014-11-01	2017-11-01
Pre-amplifier (0.1-1300MHz)	Agilent Technologies	8447D	SEM005-01	2016-04-25	2017-04-25

Conducted Disturbance at AC Power Line(150kHz-30MHz)					
Equipment	Manufacturer	Model No	Inventory No	Cal Date	Cal Due Date
Shielding Room	ZhongYu Electron	GB-88	SEM001-06	2016-05-13	2017-05-13
LISN	Rohde & Schwarz	ENV216	SEM007-01	2016-10-09	2017-10-09
LISN	ETS-LINDGREN	3816/2	SEM007-02	2016-04-25	2017-04-25
8 Line ISN	Fischer Custom Communications Inc.	FCC-TLISN-T8-02	EMC0120	2016-09-28	2017-09-28
4 Line ISN	Fischer Custom Communications Inc.	FCC-TLISN-T4-02	EMC0121	2016-09-28	2017-09-28
2 Line ISN	Fischer Custom	FCC-TLISN-T2-02	EMC0122	2016-09-28	2017-09-28

RE in Chamber					
Test Equipment	Manufacturer	Model No.	Inventory No.	Cal. Date (yyyy-mm-dd)	Cal. Due date (yyyy-mm-dd)
3m Semi-Anechoic Chamber	AUDIX	N/A	SEM001-02	2016-05-13	2017-05-13
EXA Spectrum Analyzer	Agilent Technologies Inc	N9010A	SEM004-09	2016-07-19	2017-07-19
BiConiLog Antenna (26-3000MHz)	ETS-Lindgren	3142C	SEM003-02	2014-11-15	2017-11-15
Amplifier (0.1-1300MHz)	HP	8447D	SEM005-02	2016-10-09	2017-10-09
Horn Antenna (1-18GHz)	Rohde & Schwarz	HF907	SEM003-07	2015-06-14	2018-06-14



SGS-CSTC Standards Technical Services Co., Ltd.
Shenzhen Branch

Report No.: SZEM170400297001

Page: 12 of 83

Low Noise Amplifier	Black Diamond Series	BDLNA-0118-352810	SEM005-05	2016-10-09	2017-10-09
Band filter	Amindeon	Asi 3314	SEM023-01	N/A	N/A

20dB Bandwidth

Equipment	Manufacturer	Model No	Inventory No	Cal Date	Cal Due Date
DC Power Supply	ZhaoXin	RXN-305D	SEM011-02	2016-10-09	2017-10-09
Spectrum Analyzer	Rohde & Schwarz	FSP	SEM004-06	2016-10-09	2017-10-09
Power Meter	Rohde & Schwarz	NRVS	SEM014-02	2016-10-09	2017-10-09

Conducted Peak Output Power

Equipment	Manufacturer	Model No	Inventory No	Cal Date	Cal Due Date
DC Power Supply	ZhaoXin	RXN-305D	SEM011-02	2016-10-09	2017-10-09
Spectrum Analyzer	Rohde & Schwarz	FSP	SEM004-06	2016-10-09	2017-10-09
Power Meter	Rohde & Schwarz	NRVS	SEM014-02	2016-10-09	2017-10-09

Carrier Frequencies Separation

Equipment	Manufacturer	Model No	Inventory No	Cal Date	Cal Due Date
DC Power Supply	ZhaoXin	RXN-305D	SEM011-02	2016-10-09	2017-10-09
Spectrum Analyzer	Rohde & Schwarz	FSP	SEM004-06	2016-10-09	2017-10-09
Power Meter	Rohde & Schwarz	NRVS	SEM014-02	2016-10-09	2017-10-09



SGS-CSTC Standards Technical Services Co., Ltd.
Shenzhen Branch

Report No.: SZEM170400297001

Page: 13 of 83

Hopping Channel Number					
Equipment	Manufacturer	Model No	Inventory No	Cal Date	Cal Due Date
DC Power Supply	ZhaoXin	RXN-305D	SEM011-02	2016-10-09	2017-10-09
Spectrum Analyzer	Rohde & Schwarz	FSP	SEM004-06	2016-10-09	2017-10-09
Power Meter	Rohde & Schwarz	NRVS	SEM014-02	2016-10-09	2017-10-09

Dwell Time					
Equipment	Manufacturer	Model No	Inventory No	Cal Date	Cal Due Date
DC Power Supply	ZhaoXin	RXN-305D	SEM011-02	2016-10-09	2017-10-09
Spectrum Analyzer	Rohde & Schwarz	FSP	SEM004-06	2016-10-09	2017-10-09
Power Meter	Rohde & Schwarz	NRVS	SEM014-02	2016-10-09	2017-10-09

Conducted Spurious Emissions					
Equipment	Manufacturer	Model No	Inventory No	Cal Date	Cal Due Date
DC Power Supply	ZhaoXin	RXN-305D	SEM011-02	2016-10-09	2017-10-09
Spectrum Analyzer	Rohde & Schwarz	FSP	SEM004-06	2016-10-09	2017-10-09
Power Meter	Rohde & Schwarz	NRVS	SEM014-02	2016-10-09	2017-10-09

Conducted Band Edges Measurement					
Equipment	Manufacturer	Model No	Inventory No	Cal Date	Cal Due Date
DC Power Supply	ZhaoXin	RXN-305D	SEM011-02	2016-10-09	2017-10-09
Spectrum Analyzer	Rohde & Schwarz	FSP	SEM004-06	2016-10-09	2017-10-09
Power Meter	Rohde & Schwarz	NRVS	SEM014-02	2016-10-09	2017-10-09

General used equipment					
Equipment	Manufacturer	Model No	Inventory No	Cal Date	Cal Due Date
Humidity/ Temperature Indicator	Shanghai Meteorological Industry Factory	ZJ1-2B	SEM002-03	2016-10-12	2017-10-12
Humidity/ Temperature Indicator	Shanghai Meteorological Industry Factory	ZJ1-2B	SEM002-04	2016-10-12	2017-10-12
Humidity/ Temperature Indicator	Mingle	N/A	SEM002-08	2016-10-12	2017-10-12
Barometer	Changchun Meteorological Industry Factory	DYM3	SEM002-01	2016-05-18	2017-05-18

6 Radio Spectrum Technical Requirement

6.1 Antenna Requirement

6.1.1 Test Requirement:

47 CFR Part 15, Subpart C 15.247

6.1.2 Conclusion

Standard Requirement:

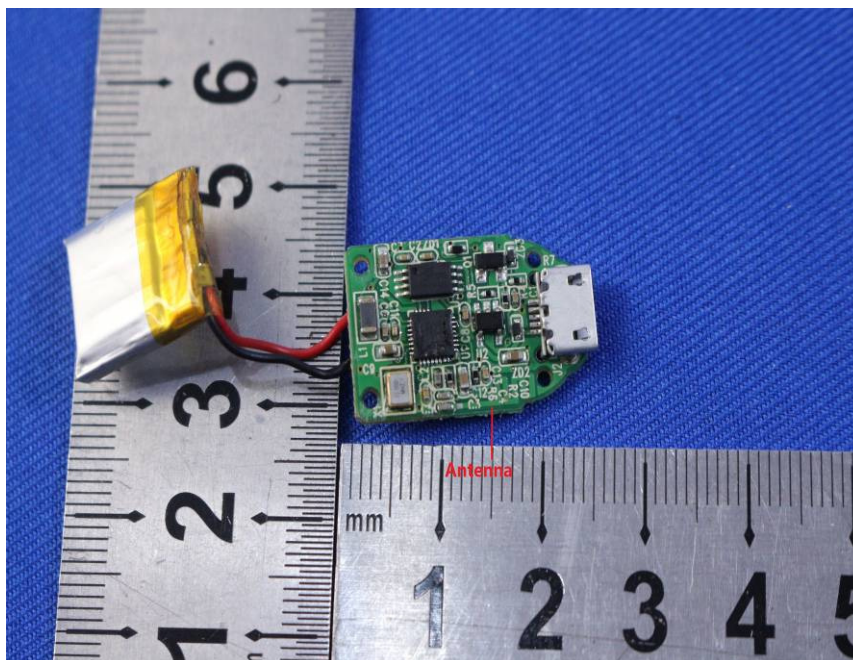
An intentional radiator shall be designed to ensure that no antenna other than that furnished by the responsible party shall be used with the device. The use of a permanently attached antenna or of an antenna that uses a unique coupling to the intentional radiator, the manufacturer may design the unit so that a broken antenna can be replaced by the user, but the use of a standard antenna jack or electrical connector is prohibited.

15.247(b) (4) requirement:

The conducted output power limit specified in paragraph (b) of this section is based on the use of antennas with directional gains that do not exceed 6 dBi. Except as shown in paragraph (c) of this section, if transmitting antennas of directional gain greater than 6 dBi are used, the conducted output power from the intentional radiator shall be reduced below the stated values in paragraphs (b)(1), (b)(2), and (b)(3) of this section, as appropriate, by the amount in dB that the directional gain of the antenna exceeds 6 dBi.

EUT Antenna:

The antenna is integrated on the main PCB and no consideration of replacement. The best case gain of the antenna is 2.3dBi.



6.2 Other requirements Frequency Hopping Spread Spectrum System Hopping Sequence

6.2.1 Test Requirement:

47 CFR Part 15, Subpart C 15.247

6.2.2 Conclusion

Standard Requirement:

The system shall hop to channel frequencies that are selected at the system hopping rate from a Pseudorandom ordered list of hopping frequencies. Each frequency must be used equally on the average by each transmitter. The system receivers shall have input bandwidths that match the hopping channel bandwidths of their corresponding transmitters and shall shift frequencies in synchronization with the transmitted signals.

Frequency hopping spread spectrum systems are not required to employ all available hopping channels during each transmission. However, the system, consisting of both the transmitter and the receiver, must be designed to comply with all of the regulations in this section should the transmitter be presented with a continuous data (or information) stream. In addition, a system employing short transmission bursts must comply with the definition of a frequency hopping system and must distribute its transmissions over the minimum number of hopping channels specified in this section.

The incorporation of intelligence within a frequency hopping spread spectrum system that permits the system to recognize other users within the spectrum band so that it individually and independently chooses and adapts its hopsets to avoid hopping on occupied channels is permitted. The coordination of frequency hopping systems in any other manner for the express purpose of avoiding the simultaneous occupancy of individual hopping frequencies by multiple transmitters is not permitted.

Compliance for section 15.247(a)(1):

According to Technical Specification, the pseudorandom sequence may be generated in a nine-stage shift register whose 5th and 9th stage outputs are added in a modulo-two addition stage. And the result is fed back to the input of the first stage. The sequence begins with the first ONE of 9 consecutive ONES; i.e. the shift register is initialized with nine ones.

Number of shift register stages: 9

Length of pseudo-random sequence: $2^9 - 1 = 511$ bits

Longest sequence of zeros: 8 (non-inverted signal)

Linear Feedback Shift Register for Generation of the PRBS sequence

An example of Pseudorandom Frequency Hopping Sequence as follow:

Each frequency used equally on the average by each transmitter.

According to Technical Specification, the receivers are designed to have input and IF bandwidths that match the hopping channel bandwidths of any transmitters and shift frequencies in synchronization with the transmitted signals.

Compliance for section 15.247(g):

According to Technical Specification, the system transmits the packet with the pseudorandom hopping frequency with a continuous data and the short burst transmission from the Bluetooth system is also transmitted under the frequency hopping system with the pseudorandom hopping frequency system.

Compliance for section 15.247(h):



**SGS-CSTC Standards Technical Services Co., Ltd.
Shenzhen Branch**

Report No.: SZEM170400297001

Page: 16 of 83

According to Technical specification, the system incorporates with an adaptive system to detect other user within the spectrum band so that it individ



7 Radio Spectrum Matter Test Results

7.1 Conducted Disturbance at AC Power Line(150kHz-30MHz)

Test Requirement 47 CFR Part 15, Subpart C 15.207

Test Method: ANSI C63.10 (2013) Section 6.2

Limit:

Frequency of emission(MHz)	Conducted limit(dB μ V)	
	Quasi-peak	Average
0.15-0.5	66 to 56*	56 to 46*
0.5-5	56	46
5-30	60	50
*Decreases with the logarithm of the frequency.		

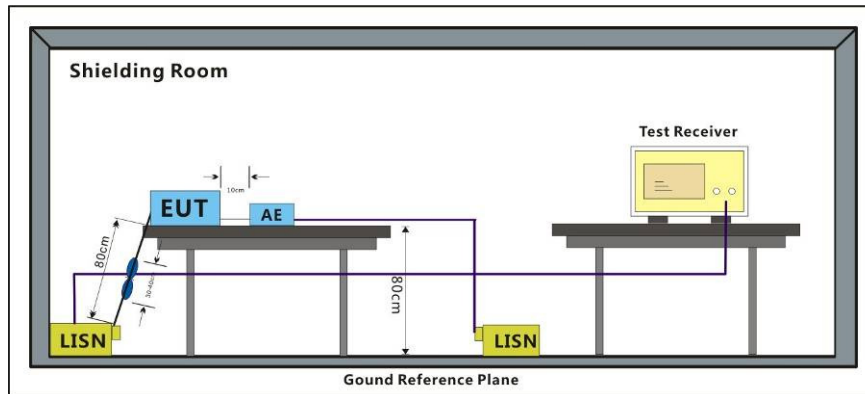
7.1.1 E.U.T. Operation

Operating Environment:

Temperature: 25.0 °C Humidity: 55 % RH Atmospheric Pressure: 1020 mbar

Test mode: b:TX+Charge_Keep the EUT in transmitting mode and being charged

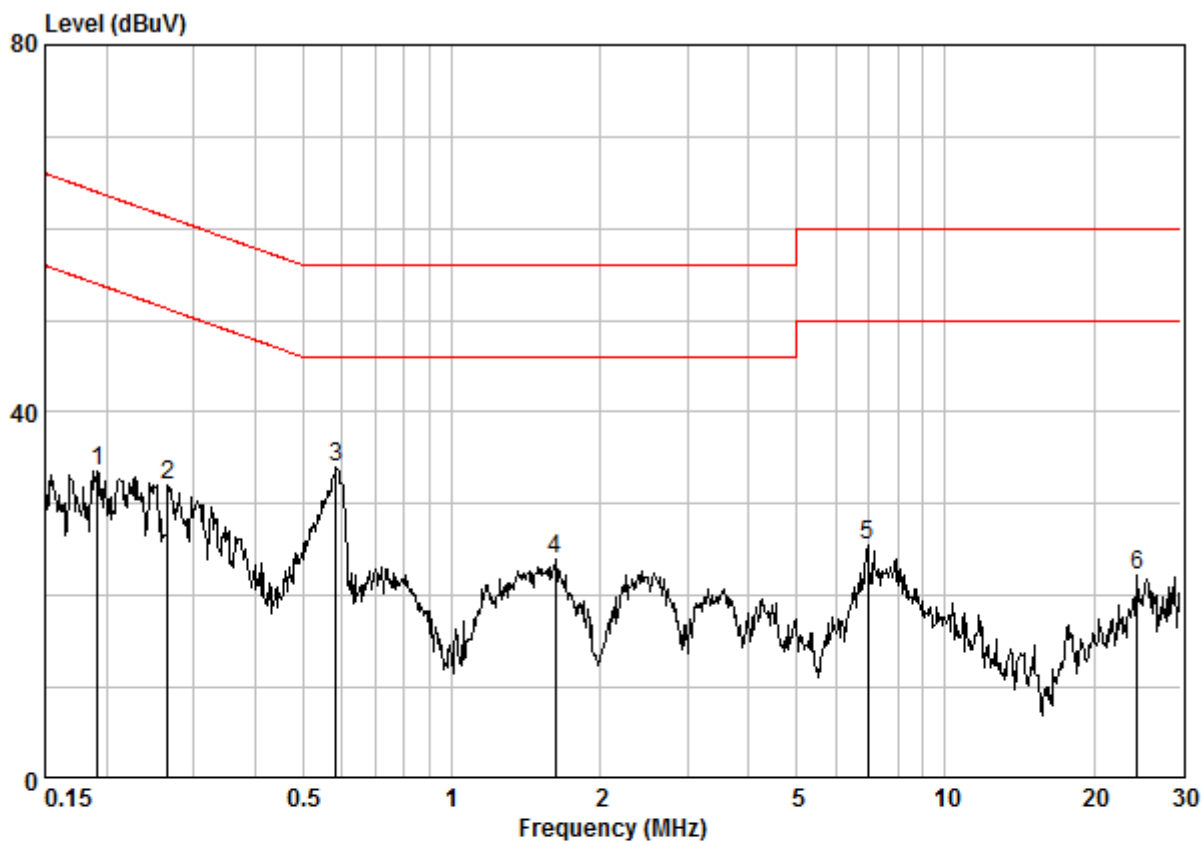
7.1.2 Test Setup Diagram



7.1.3 Measurement Data

- 1) The mains terminal disturbance voltage test was conducted in a shielded room.
- 2) The EUT was connected to AC power source through a LISN 1 (Line Impedance Stabilization Network) which provides a 50ohm/50μH + 5ohm linear impedance. The power cables of all other units of the EUT were connected to a second LISN 2, which was bonded to the ground reference plane in the same way as the LISN 1 for the unit being measured. A multiple socket outlet strip was used to connect multiple power cables to a single LISN provided the rating of the LISN was not exceeded.
- 3) The tabletop EUT was placed upon a non-metallic table 0.8m above the ground reference plane. And for floor-standing arrangement, the EUT was placed on the horizontal ground reference plane,
- 4) The test was performed with a vertical ground reference plane. The rear of the EUT shall be 0.4 m from the vertical ground reference plane. The vertical ground reference plane was bonded to the horizontal ground reference plane. The LISN 1 was placed 0.8 m from the boundary of the unit under test and bonded to a ground reference plane for LISNs mounted on top of the ground reference plane. This distance was between the closest points of the LISN 1 and the EUT. All other units of the EUT and associated equipment was at least 0.8 m from the LISN 2.
- 5) In order to find the maximum emission, the relative positions of equipment and all of the interface cables must be changed according to ANSI C63.10 on conducted measurement.

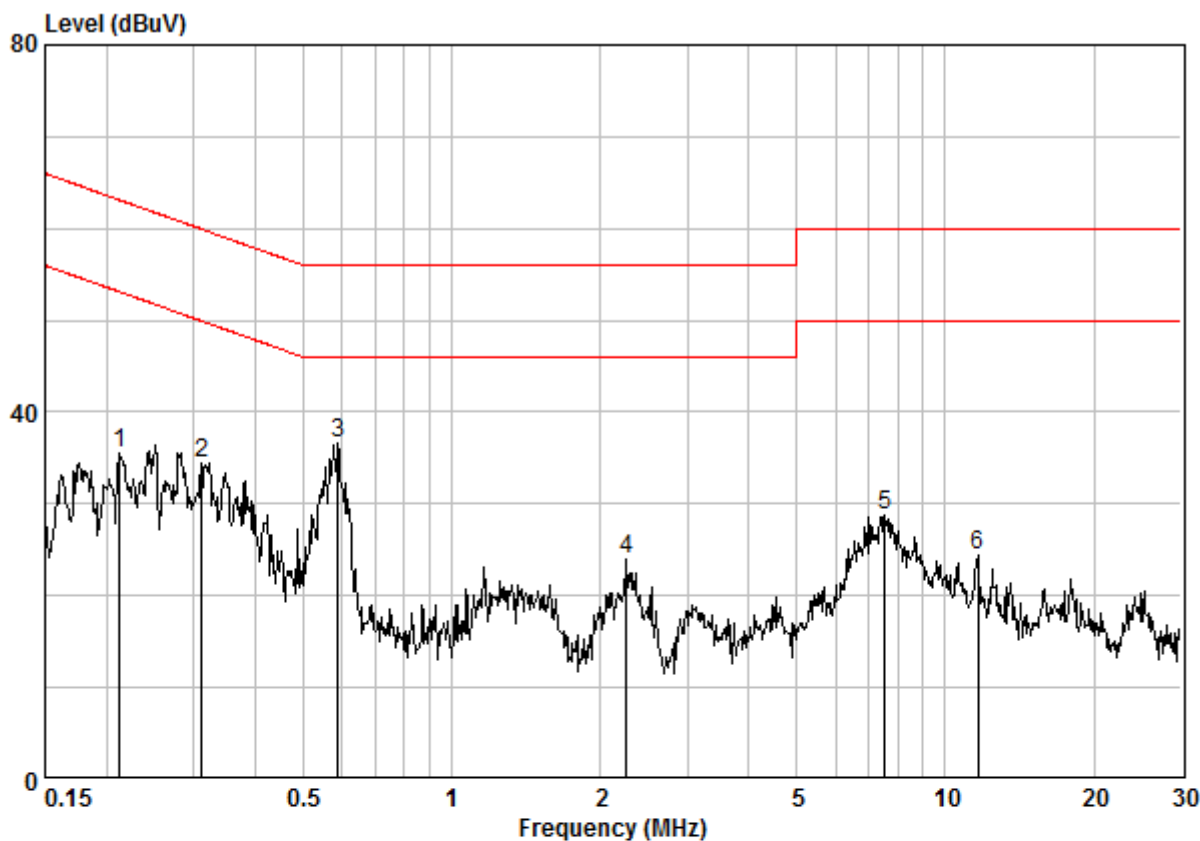
Mode:b; Line:Live Line



Site : Shielding Room
Condition : CE LINE
Job No. : 02970CR
Test mode : b

	Freq	Cable Loss	LISN Factor	Read Level	Level	Limit Line	Over Limit	Remark
	MHz	dB	dB	dBuV	dBuV	dBuV	dB	
1	0.19140	0.02	9.64	24.02	33.68	53.98	-20.30	Peak
2	0.26583	0.02	9.64	22.38	32.04	51.25	-19.20	Peak
3 @	0.58231	0.02	9.65	24.27	33.94	46.00	-12.06	Peak
4	1.619	0.03	9.66	14.23	23.92	46.00	-22.08	Peak
5	6.951	0.08	9.79	15.54	25.41	50.00	-24.59	Peak
6	24.529	0.16	10.32	11.80	22.28	50.00	-27.72	Peak

Mode:b; Line:Neutral Line



Site : Shielding Room
Condition : CE NEUTRAL
Job No. : 02970CR
Test mode : b

	Freq	Cable Loss	LISN Factor	Read Level	Level	Limit Line	Over Limit	Remark
	MHz	dB	dB	dBuV	dBuV	dBuV	dB	
1	0.21279	0.02	9.63	25.89	35.54	53.10	-17.55	Peak
2	0.31163	0.02	9.63	24.84	34.49	49.93	-15.44	Peak
3 @	0.58851	0.02	9.63	27.06	36.71	46.00	-9.29	Peak
4	2.261	0.03	9.66	14.20	23.89	46.00	-22.11	Peak
5	7.526	0.09	9.78	18.83	28.70	50.00	-21.30	Peak
6	11.621	0.15	9.89	14.42	24.45	50.00	-25.55	Peak

7.2 20dB Bandwidth

Test Requirement 47 CFR Part 15, Subpart C 15.247(a)(1)

Test Method: ANSI C63.10 (2013) Section 7.8.7

7.2.1 E.U.T. Operation

Operating Environment:

Temperature: 23.0 °C Humidity: 56 % RH Atmospheric Pressure: 1015 mbar

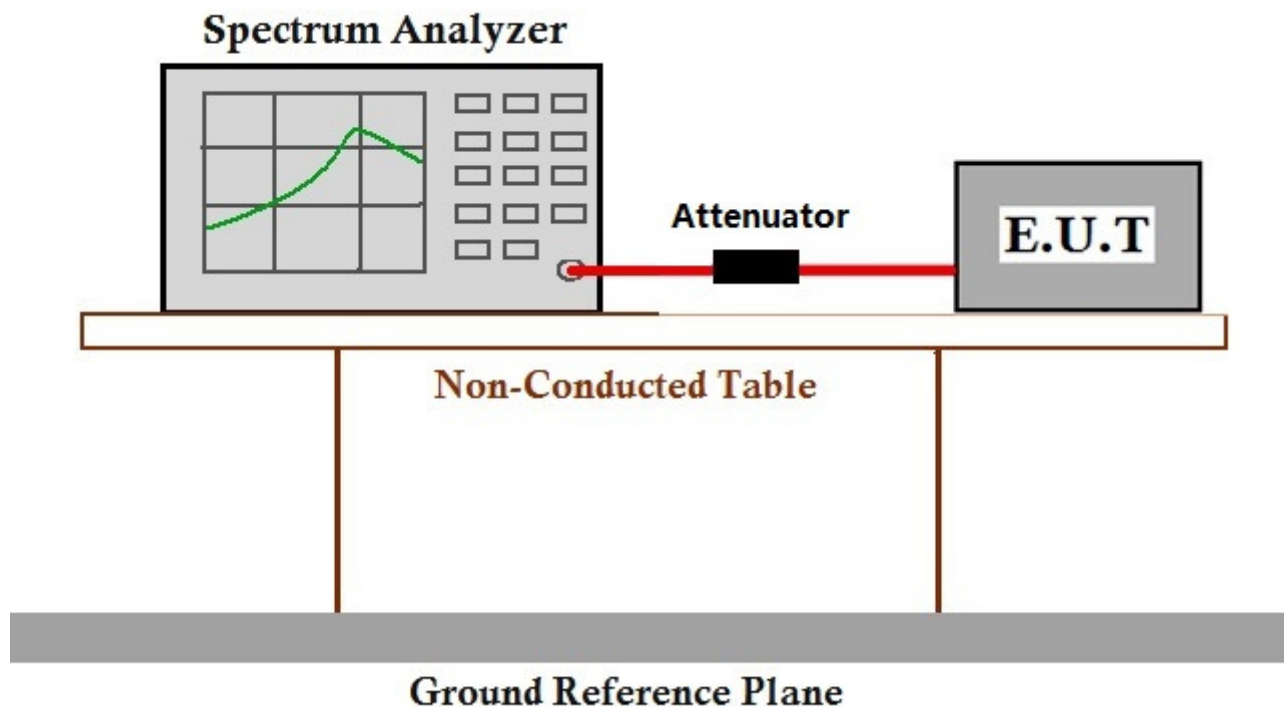
Exploratory Test Mode: Non-hopping transmitting with all kind of modulation and all kind of data type
 Transmitting mode and Charge + Transmitting mode.

Final Test Mode: Through Pre-scan, find the DH1 of data type is the worst case of GFSK modulation type.

Transmitting mode.

Only the worst case is recorded in the report.

7.2.2 Test Setup Diagram



7.2.3 Measurement Data

The detailed test data see: Appendix 15.247



7.3 Conducted Peak Output Power

Test Requirement 47 CFR Part 15, Subpart C 15.247(b)(1)

Test Method: ANSI C63.10 (2013) Section 7.8.5

Limit:

Frequency range(MHz)	Output power of the intentional radiator(watt)
902-928	1 for ≥ 50 hopping channels
	0.25 for $25 \leq$ hopping channels < 50
	1 for digital modulation
2400-2483.5	1 for ≥ 75 non-overlapping hopping channels
	0.125 for all other frequency hopping systems
	1 for digital modulation
5725-5850	1 for frequency hopping systems and digital modulation

7.3.1 E.U.T. Operation

Operating Environment:

Temperature: 23.0 °C Humidity: 56 % RH Atmospheric Pressure: 1015 mbar

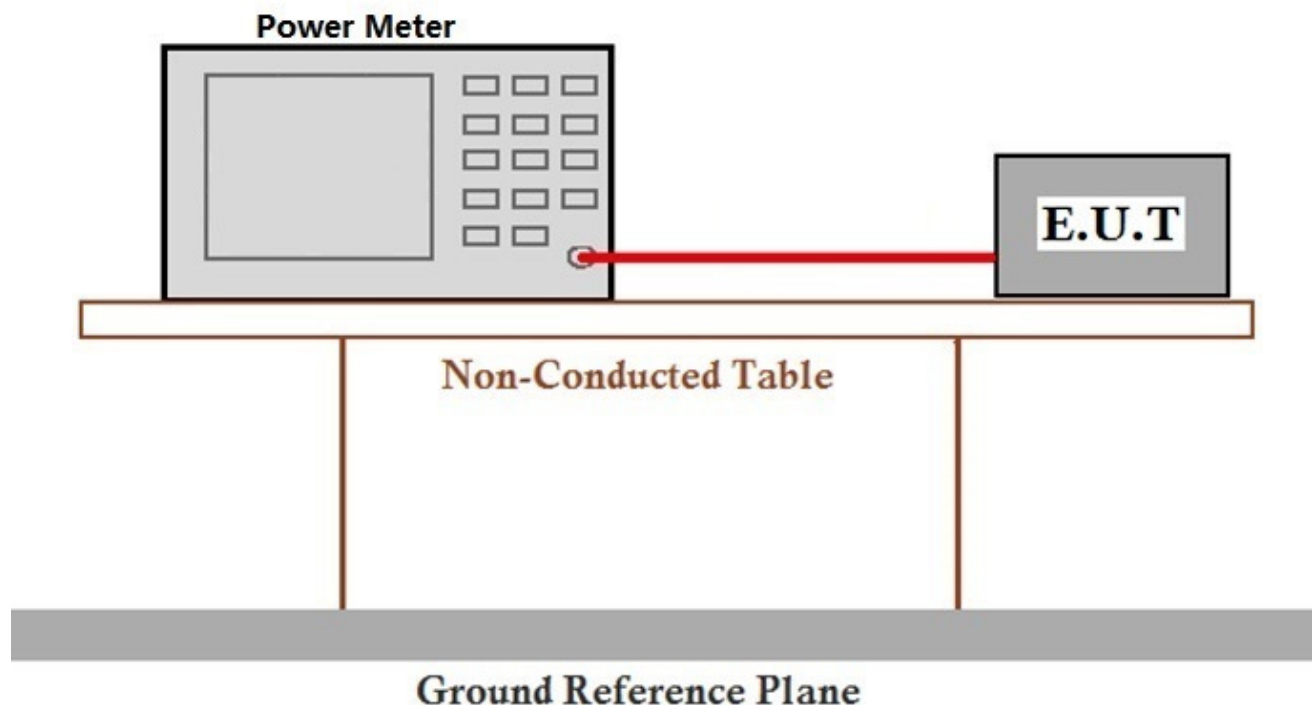
Exploratory Test Mode: Non-hopping transmitting with all kind of modulation and all kind of data type
 Transmitting mode and Charge + Transmitting mode.

Final Test Mode: Through Pre-scan, find the DH1 of data type is the worst case of GFSK modulation type.

Transmitting mode.

Only the worst case is recorded in the report.

7.3.2 Test Setup Diagram



7.3.3 Measurement Data

The detailed test data see: Appendix 15.247

7.4 Carrier Frequencies Separation

Test Requirement	47 CFR Part 15, Subpart C 15.247a(1)
Test Method:	ANSI C63.10 (2013) Section 7.8.2
Limit:	2/3 of the 20dB bandwidth base on the transmission power is less than 0.125W

7.4.1 E.U.T. Operation

Operating Environment:

Temperature: 23.0 °C Humidity: 56 % RH Atmospheric Pressure: 1015 mbar

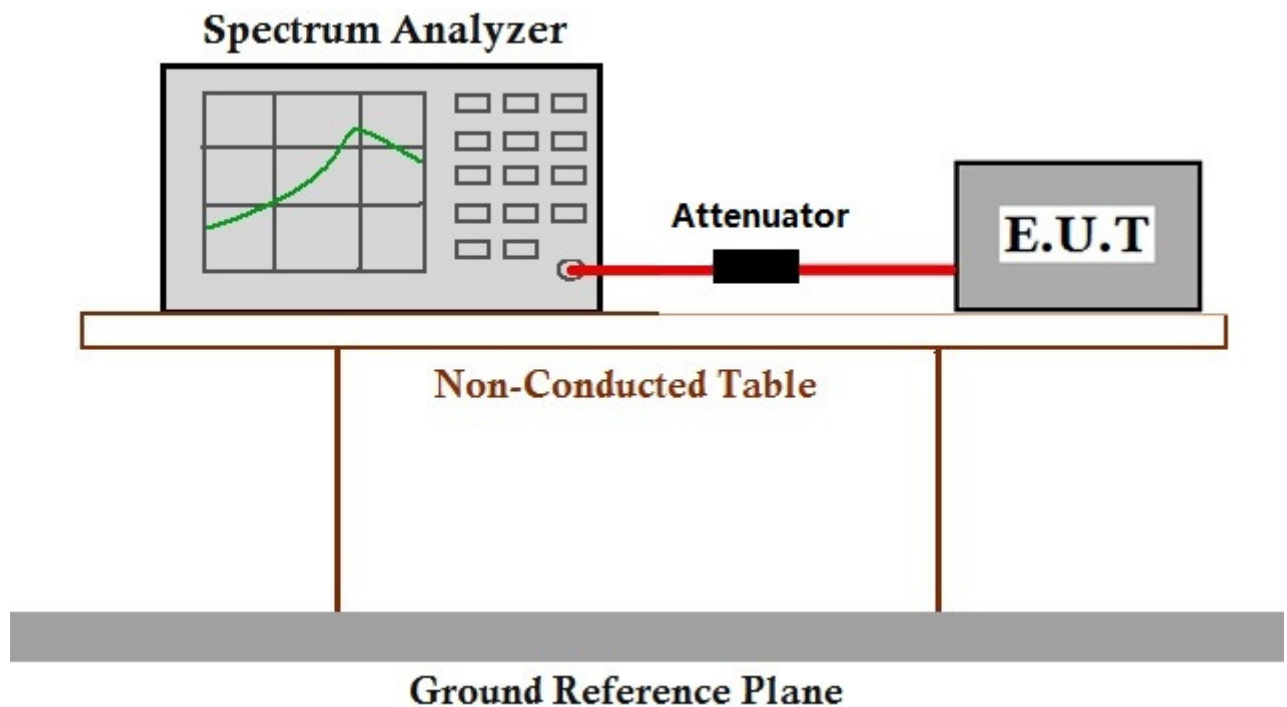
Exploratory Test Mode: Hopping transmitting with all kind of modulation and all kind of data type
Transmitting mode and Charge + Transmitting mode.

Final Test Mode: Through Pre-scan, find the DH1 of data type is the worst case of GFSK modulation type.

Transmitting mode

Only the worst case is recorded in the report.

7.4.2 Test Setup Diagram



7.4.3 Measurement Data

The detailed test data see: Appendix 15.247



7.5 Hopping Channel Number

Test Requirement 47 CFR Part 15, Subpart C 15.247a(1)(iii)

Test Method: ANSI C63.10 (2013) Section 7.8.3

Limit:

Frequency range(MHz)	Number of hopping channels (minimum)
902-928	50 for 20dB bandwidth <250kHz
	25 for 20dB bandwidth ≥250kHz
2400-2483.5	15
5725-5850	75

7.5.1 E.U.T. Operation

Operating Environment:

Temperature: 23.0 °C Humidity: 56 % RH Atmospheric Pressure: 1015 mbar

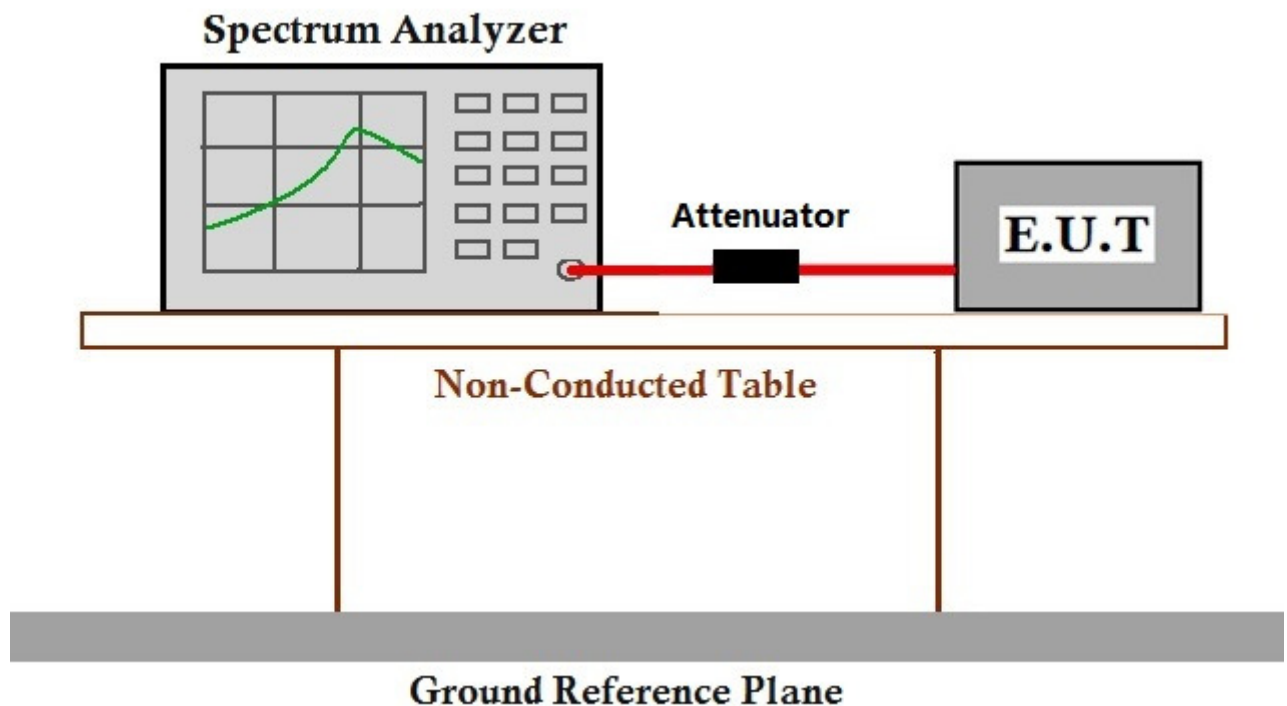
Exploratory Test Mode: Hopping transmitting with all kind of modulation and all kind of data type
 Transmitting mode and Charge + Transmitting mode.

Final Test Mode: Through Pre-scan, find the DH1 of data type is the worst case of GFSK modulation type.

Transmitting mode

Only the worst case is recorded in the report.

7.5.2 Test Setup Diagram



7.5.3 Measurement Data

The detailed test data see: Appendix 15.247



7.6 Dwell Time

Test Requirement 47 CFR Part 15, Subpart C 15.247a(1)(iii)
Test Method: ANSI C63.10 (2013) Section 7.8.4
Limit:

Frequency(MHz)	Limit
902-928	0.4S within a 20S period(20dB bandwidth<250kHz)
	0.4S within a 10S period(20dB bandwidth≥250kHz)
2400-2483.5	0.4S within a period of 0.4S multiplied by the number of hopping channels
5725-5850	0.4S within a 30S period

7.6.1 E.U.T. Operation

Operating Environment:

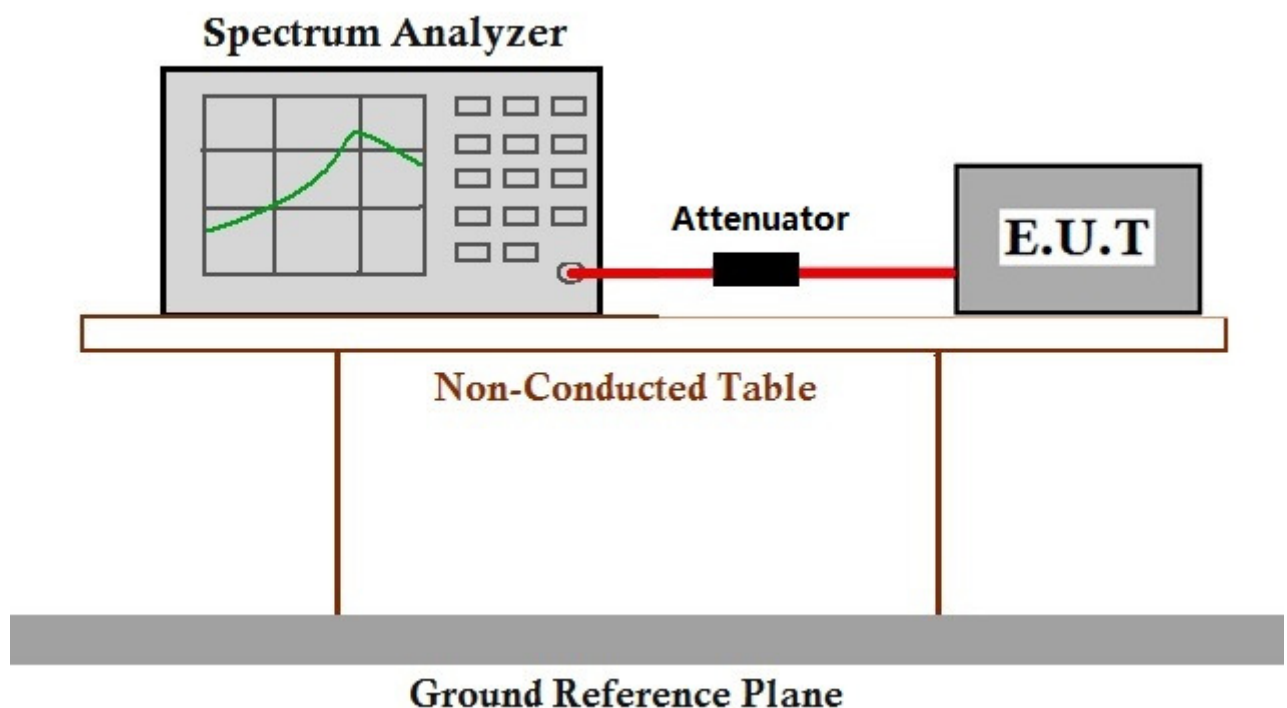
Temperature: 23.0 °C Humidity: 56 % RH Atmospheric Pressure: 1015 mbar

Exploratory Test Mode: Hopping transmitting with all kind of modulation and all kind of data type
 Transmitting mode and Charge + Transmitting mode.

Final Test Mode: Transmitting mode

Only the worst case is recorded in the report.

7.6.2 Test Setup Diagram



7.6.3 Measurement Data

The detailed test data see: Appendix 15.247



7.7 Conducted Spurious Emissions

Test Requirement	47 CFR Part 15, Subpart C 15.247(d)
Test Method:	ANSI C63.10 (2013) Section 7.8.8
Limit:	In any 100 kHz bandwidth outside the frequency band in which the spread spectrum intentional radiator is operating, the radio frequency power that is produced by the intentional radiator shall be at least 20 dB below that in the 100 kHz bandwidth within the band that contains the highest level of the desired power, based on either an RF conducted or a radiated measurement.

7.7.1 E.U.T. Operation

Operating Environment:

Temperature: 23.0 °C Humidity: 56 % RH Atmospheric Pressure: 1015 mbar

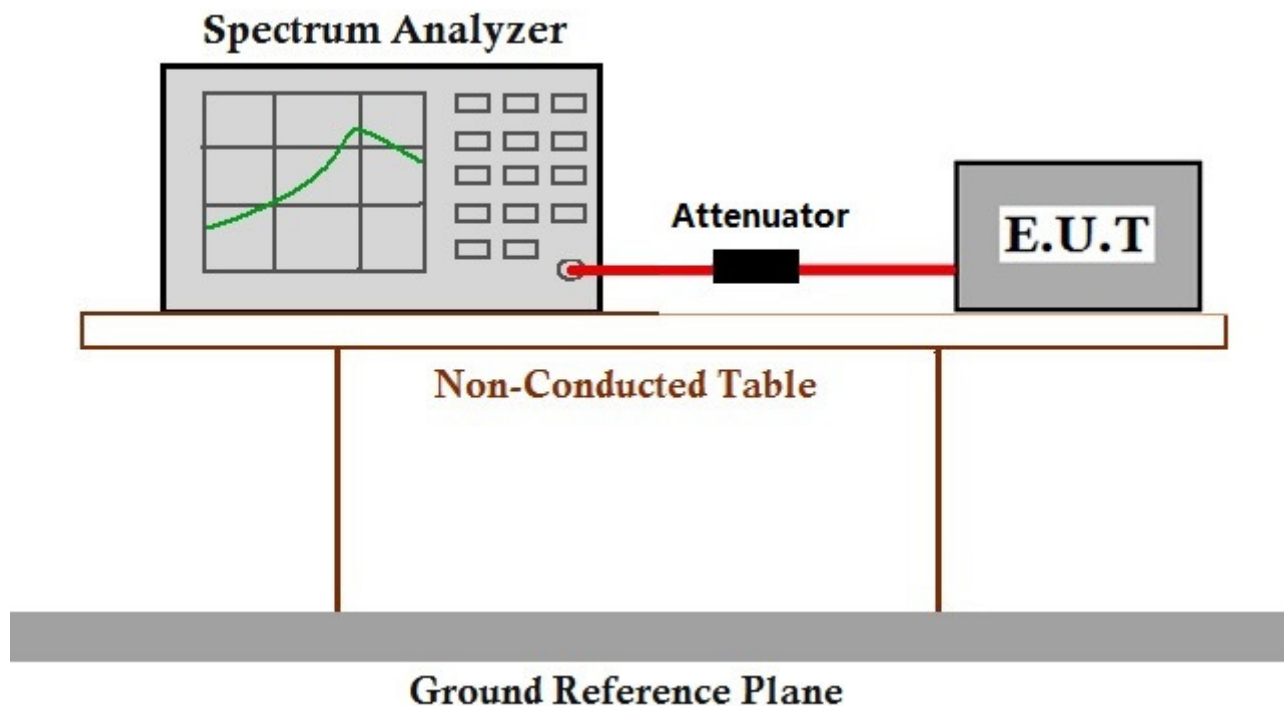
Exploratory Test Mode: Non-hopping transmitting with all kind of modulation and all kind of data type
 Transmitting mode and Charge + Transmitting mode.

Final Test Mode: Through Pre-scan, find the DH1 of data type is the worst case of GFSK modulation type.

Transmitting mode

Only the worst case is recorded in the report.

7.7.2 Test Setup Diagram



7.7.3 Measurement Data

The detailed test data see: Appendix 15.247



7.8 Radiated Spurious Emissions

Test Requirement 47 CFR Part 15, Subpart C 15.205 & 15.209

Test Method: ANSI C63.10 (2013) Section 6.4,6.5,6.6

Measurement Distance: 3m

Limit:

Frequency(MHz)	Field strength(microvolts/meter)	Measurement distance(meters)
0.009-0.490	2400/F(kHz)	300
0.490-1.705	24000/F(kHz)	30
1.705-30.0	30	30
30-88	100	3
88-216	150	3
216-960	200	3
Above 960	500	3

Remark: The emission limits shown in the above table are based on measurements employing a CISPR quasi-peak detector except for the frequency bands 9-90kHz, 110-490kHz and above 1000 MHz. Radiated emission limits in these three bands are based on measurements employing an average detector, the peak field strength of any emission shall not exceed the maximum permitted average limits specified above by more than 20 dB under any condition of modulation.

7.8.1 E.U.T. Operation

Operating Environment:

Temperature: 25.0 °C Humidity: 55 % RH Atmospheric Pressure: 1020 mbar

Exploratory Test Mode: Non-hopping transmitting mode with all kind of modulation and all kind of data type

Transmitting mode and Charge + Transmitting mode.

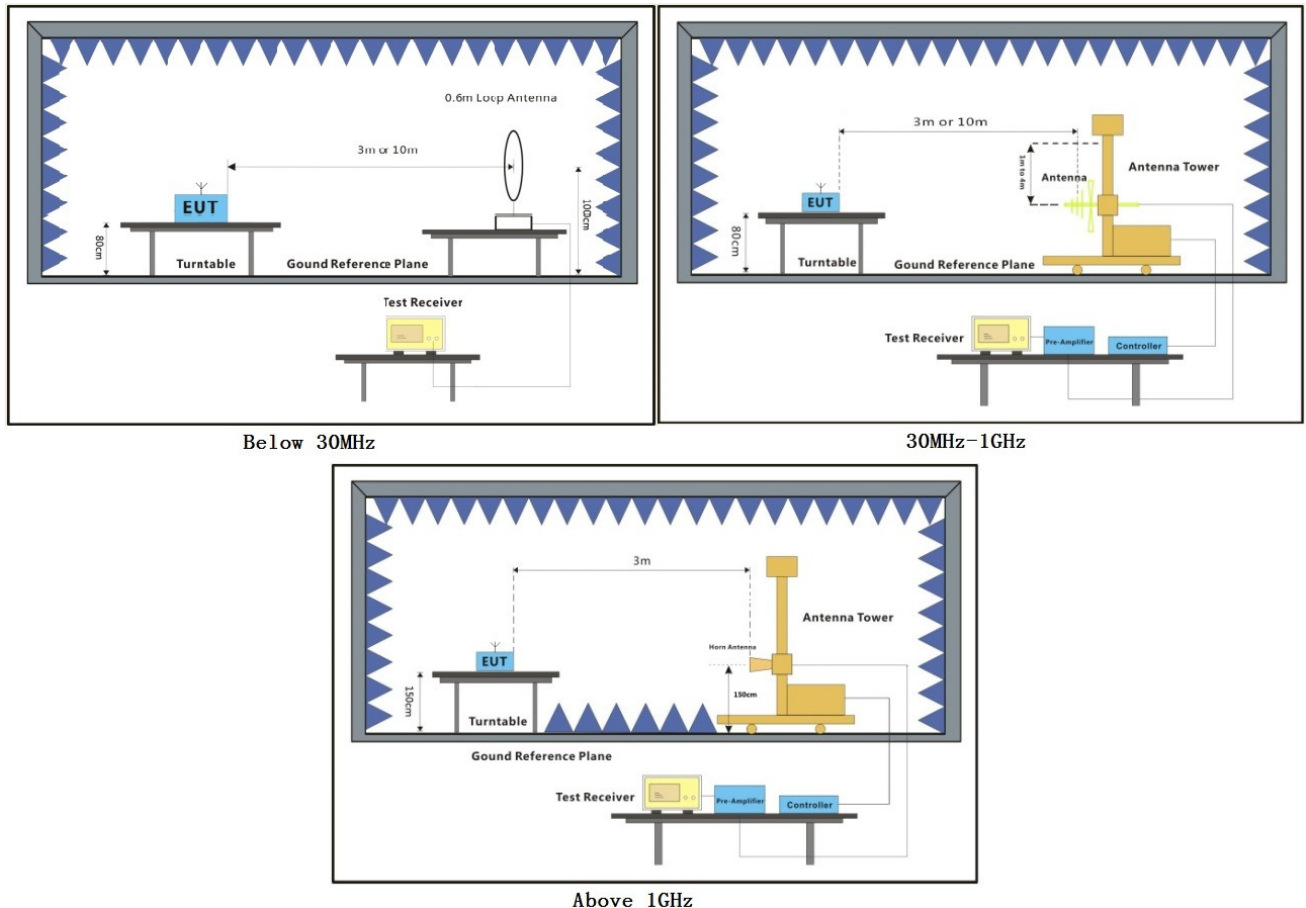
Final Test Mode: Through Pre-scan, find the DH1 of data type and 8DPSK modulation is the worst case.

Charge + Transmitting mode

For below 1GHz part, through pre-scan, the worst case is the lowest channel.

Only the worst case is recorded in the report.

7.8.2 Test Setup Diagram





7.8.3 Measurement Data

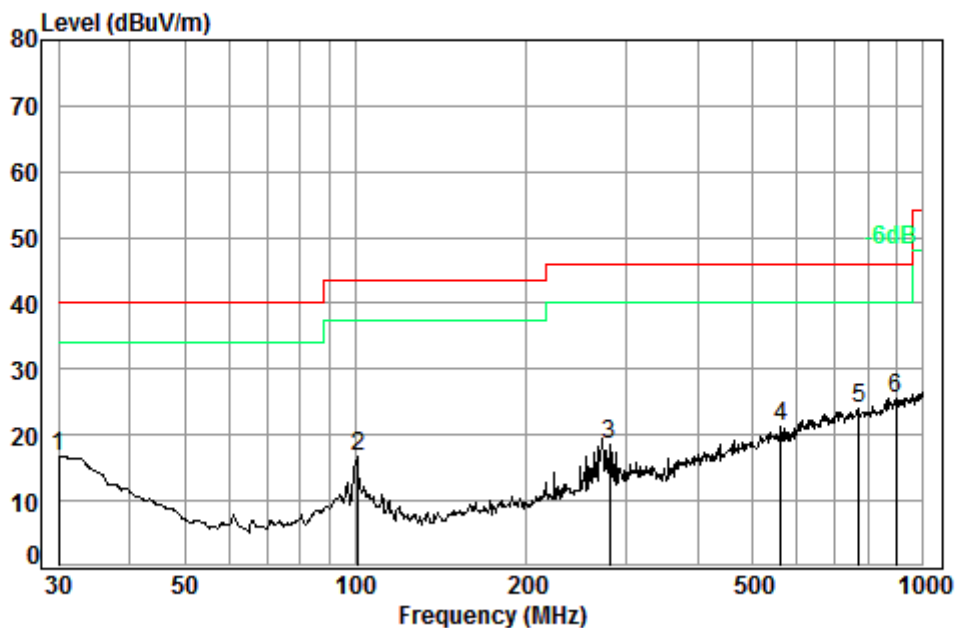
- a. For below 1GHz, the EUT was placed on the top of a rotating table 0.8 meters above the ground at a 3 meter semi-anechoic chamber. The table was rotated 360 degrees to determine the position of the highest radiation.
- b. For above 1GHz, the EUT was placed on the top of a rotating table 1.5 meters above the ground at a 3 meter fully-anechoic chamber. The table was rotated 360 degrees to determine the position of the highest radiation.
- c. The EUT was set 3 or 10 meters away from the interference-receiving antenna, which was mounted on the top of a variable-height antenna tower.
- d. The antenna height is varied from one meter to four meters above the ground to determine the maximum value of the field strength. Both horizontal and vertical polarizations of the antenna are set to make the measurement.
- e. For each suspected emission, the EUT was arranged to its worst case and then the antenna was tuned to heights from 1 meter to 4 meters (for the test frequency of below 30MHz, the antenna was tuned to heights 1 meter) and the rotatable table was turned from 0 degrees to 360 degrees to find the maximum reading.
- f. The test-receiver system was set to Peak Detect Function and Specified Bandwidth with Maximum Hold Mode.
- g. If the emission level of the EUT in peak mode was 10dB lower than the limit specified, then testing could be stopped and the peak values of the EUT would be reported. Otherwise the emissions that did not have 10dB margin would be re-tested one by one using peak, quasi-peak or average method as specified and then reported in a data sheet.
- h. Test the EUT in the lowest channel, the middle channel, the Highest channel.
- i. The radiation measurements are performed in X, Y, Z axis positioning for Transmitting mode, and found the X axis positioning which it is the worst case.
- j. Repeat above procedures until all frequencies measured was complete.



below 1GHz

Detector:QP

Mode:b; Polarization:Horizontal;



Condition: 3m HORIZONTAL

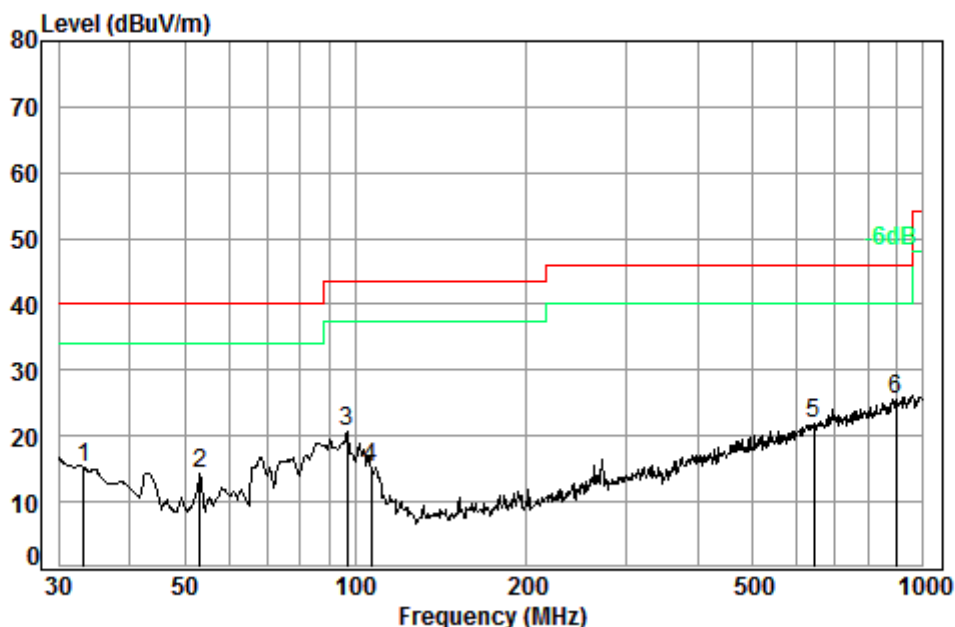
Job No. : 02970CR

Test Mode: Charge+Tx

	Freq	Cable Loss	Ant Factor	Preamp Factor	Read Level	Level	Limit Line	Over Limit
	MHz	dB	dB/m	dB	dBuV	dBuV/m	dBuV/m	dB
1	30.00	0.60	18.70	27.36	24.71	16.65	40.00	-23.35
2	100.93	1.20	9.05	27.19	33.82	16.88	43.50	-26.62
3	280.02	1.81	13.02	26.45	30.26	18.64	46.00	-27.36
4	560.69	2.66	18.99	27.60	27.38	21.43	46.00	-24.57
5	771.45	3.12	21.96	27.33	26.24	23.99	46.00	-22.01
6 pp	893.86	3.58	23.15	26.82	25.74	25.65	46.00	-20.35



Mode:b; Polarization: Vertical;



Condition: 3m VERTICAL

Job No. : 02970CR

Test Mode: Charge+Tx

		Cable	Ant	Preamp	Read		Limit	Over
	Freq	Loss	Factor	Factor	Level	Level	Line	Limit
	MHz	dB	dB/m	dB	dBuV	dBuV/m	dBuV/m	dB
1	33.21	0.60	16.90	27.34	25.02	15.18	40.00	-24.82
2	53.32	0.80	8.20	27.28	32.70	14.42	40.00	-25.58
3	96.77	1.17	8.97	27.20	37.80	20.74	43.50	-22.76
4	106.76	1.22	8.76	27.15	32.39	15.22	43.50	-28.28
5	640.61	2.79	20.56	27.49	25.91	21.77	46.00	-24.23
6 pp	897.00	3.59	23.18	26.78	25.57	25.56	46.00	-20.44



Above 1GHz

Mode:b; Polarization:Horizontal; Modulation Type:GFSK; Channel:Low

Peak

Frequency (MHz)	Antenna factors (dB/m)	Cable Loss (dB)	Preamp Gain (dB)	Reading Level (dBmV)	Level (dBmV/m)	Limit (dBmV/m)	Over limit (dB)
3853.298	33.21	6.59	37.99	45.46	47.75	74.00	-26.25
4804.000	34.16	7.73	38.40	51.74	55.62	74.00	-18.38
5828.433	34.60	8.58	38.33	44.84	50.07	74.00	-23.93
7206.000	36.42	9.65	37.11	49.59	58.81	74.00	-15.19
9608.000	37.52	11.06	35.10	39.44	53.37	74.00	-20.63
12010.000	38.61	12.42	35.62	46.29	62.46	74.00	-11.54

Average

Frequency (MHz)	Antenna factors (dB/m)	Cable Loss (dB)	Preamp Gain (dB)	Reading Level (dBmV)	Level (dBmV/m)	Limit (dBmV/m)	Over limit (dB)
4804.000	34.16	7.73	38.40	44.88	48.76	54.00	-5.24
7206.000	36.42	9.65	37.11	41.38	50.60	54.00	-3.40
12010.000	38.61	12.42	35.62	35.80	51.97	54.00	-2.03

Mode:b; Polarization:Vertical; Modulation Type:GFSK; Channel:Low

Peak

Frequency (MHz)	Antenna factors (dB/m)	Cable Loss (dB)	Preamp Gain (dB)	Reading Level (dBmV)	Level (dBmV/m)	Limit (dBmV/m)	Over limit (dB)
3881.276	33.28	6.61	37.99	44.70	47.08	74.00	-26.92
4804.000	34.16	7.73	38.40	49.00	52.88	74.00	-21.12
5887.766	34.63	8.64	38.32	44.58	49.89	74.00	-24.11
7206.000	36.42	9.65	37.11	48.10	57.32	74.00	-16.68
9608.000	37.52	11.06	35.10	39.66	53.59	74.00	-20.41
12010.000	38.61	12.42	35.62	45.30	61.47	74.00	-12.53



Average

Frequency (MHz)	Antenna factors (dB/m)	Cable Loss (dB)	Preamp Gain (dB)	Reading Level (dBmV)	Level (dBmV/m)	Limit (dBmV/m)	Over limit (dB)
7206.000	36.42	9.65	37.11	41.52	50.74	54.00	-3.26
12010.000	38.61	12.42	35.62	36.86	53.03	54.00	-0.97

Mode:b; Polarization:Horizontal; Modulation Type:GFSK; Channel:middle

Peak

Frequency (MHz)	Antenna factors (dB/m)	Cable Loss (dB)	Preamp Gain (dB)	Reading Level (dBmV)	Level (dBmV/m)	Limit (dBmV/m)	Over limit (dB)
3754.236	32.94	6.51	37.98	45.21	47.19	74.00	-26.81
4882.000	34.30	7.84	38.44	49.74	53.85	74.00	-20.15
6016.949	34.71	8.76	38.28	44.36	49.87	74.00	-24.13
7323.000	36.37	9.73	37.01	46.18	55.50	74.00	-18.50
9764.000	37.55	11.21	35.02	39.34	53.54	74.00	-20.46
12205.000	38.72	12.71	36.09	44.10	60.14	74.00	-13.86

Average

Frequency (MHz)	Antenna factors (dB/m)	Cable Loss (dB)	Preamp Gain (dB)	Reading Level (dBmV)	Level (dBmV/m)	Limit (dBmV/m)	Over limit (dB)
7323.000	36.37	9.73	37.01	38.72	48.04	54.00	-5.96
12205.000	38.72	12.71	36.09	35.37	51.41	54.00	-2.59

Mode:b; Polarization:Vertical; Modulation Type:GFSK; Channel:middle

Peak

Frequency (MHz)	Antenna factors (dB/m)	Cable Loss (dB)	Preamp Gain (dB)	Reading Level (dBmV)	Level (dBmV/m)	Limit (dBmV/m)	Over limit (dB)
3786.970	33.03	6.54	37.98	44.18	46.27	74.00	-27.73
4882.000	34.30	7.84	38.44	48.35	52.46	74.00	-21.54
5887.766	34.63	8.64	38.32	44.83	50.14	74.00	-23.86
7323.000	36.37	9.73	37.01	44.37	53.69	74.00	-20.31
9764.000	37.55	11.21	35.02	39.31	53.51	74.00	-20.49
12205.000	38.72	12.71	36.09	45.21	61.25	74.00	-12.75



Average

Frequency (MHz)	Antenna factors (dB/m)	Cable Loss (dB)	Preamp Gain (dB)	Reading Level (dBmV)	Level (dBmV/m)	Limit (dBmV/m)	Over limit (dB)
12205.000	38.72	12.71	36.09	35.97	52.01	54.00	-1.99



Mode:b; Polarization:Horizontal; Modulation Type:GFSK; Channel:High

Peak

Frequency (MHz)	Antenna factors (dB/m)	Cable Loss (dB)	Preamp Gain (dB)	Reading Level (dBmV)	Level (dBmV/m)	Limit (dBmV/m)	Over limit (dB)
3636.612	32.60	6.41	37.96	44.19	45.76	74.00	-28.24
4960.000	34.43	7.94	38.48	48.77	53.09	74.00	-20.91
6131.199	34.81	8.83	38.17	44.35	50.11	74.00	-23.89
7440.000	36.32	9.81	36.90	43.03	52.48	74.00	-21.52
9920.000	37.59	11.37	34.94	38.50	52.98	74.00	-21.02
12279.260	38.77	12.82	36.27	37.03	53.03	74.00	-20.97

Mode:b; Polarization:Vertical; Modulation Type:GFSK; Channel:High

Peak

Frequency (MHz)	Antenna factors (dB/m)	Cable Loss (dB)	Preamp Gain (dB)	Reading Level (dBμV)	Level (dBμV/m)	Limit (dBμV/m)	Over limit (dB)
3960.700	33.50	6.67	38.00	45.12	47.74	74.00	-26.26
4960.000	34.43	7.94	38.48	47.51	51.83	74.00	-22.17
6104.642	34.79	8.82	38.20	44.16	49.86	74.00	-24.14
7440.000	36.32	9.81	36.90	43.57	53.02	74.00	-20.98
9920.000	37.59	11.37	34.94	42.04	56.52	74.00	-17.48
12385.000	38.83	12.97	36.53	43.68	59.59	74.00	-14.41

Average

Frequency (MHz)	Antenna factors (dB/m)	Cable Loss (dB)	Preamp Gain (dB)	Reading Level (dBmV)	Level (dBmV/m)	Limit (dBmV/m)	Over limit (dB)
9920.000	37.59	11.37	34.94	33.12	47.60	54.00	-6.40
12385.000	38.83	12.97	36.53	30.05	45.96	54.00	-8.04

Remark:

- 1) The field strength is calculated by adding the Antenna Factor, Cable Factor & Preamplifier. The basic equation with a sample calculation is as follows:

Final Test Level = Receiver Reading + Antenna Factor + Cable Factor – Preamplifier Factor

- 2) Scan from 9kHz to 25GHz, the disturbance above 13GHz and below 30MHz was very low, and the above harmonics were the highest point could be found when testing, so only the above harmonics had been displayed. The amplitude of spurious emissions from the radiator which are attenuated more than 20dB below the limit need not be reported.



- 3) As shown in this section, for frequencies above 1GHz, the field strength limits are based on average limits. However, the peak field strength of any emission shall not exceed the maximum permitted average limits specified above by more than 20 dB under any condition of modulation. So, only the peak measurements were shown in the report.

7.9 Radiated Emissions which fall in the restricted bands

Test Requirement 47 CFR Part 15, Subpart C 15.205 & 15.209
 Test Method: ANSI C63.10 (2013) Section 6.10.5
 Measurement Distance: 3m
 Limit:

Frequency(MHz)	Field strength(microvolts/meter)	Measurement distance(meters)
0.009-0.490	2400/F(kHz)	300
0.490-1.705	24000/F(kHz)	30
1.705-30.0	30	30
30-88	100	3
88-216	150	3
216-960	200	3
Above 960	500	3

Remark: The emission limits shown in the above table are based on measurements employing a CISPR quasi-peak detector except for the frequency bands 9-90kHz, 110-490kHz and above 1000 MHz. Radiated emission limits in these three bands are based on measurements employing an average detector, the peak field strength of any emission shall not exceed the maximum permitted average limits specified above by more than 20 dB under any condition of modulation.

7.9.1 E.U.T. Operation

Operating Environment:

Temperature: 23.0 °C Humidity: 53 % RH Atmospheric Pressure: 1015 mbar

Exploratory Test Mode: Non-hopping transmitting mode with all kind of modulation and all kind of data type

Transmitting mode and Charge + Transmitting mode.

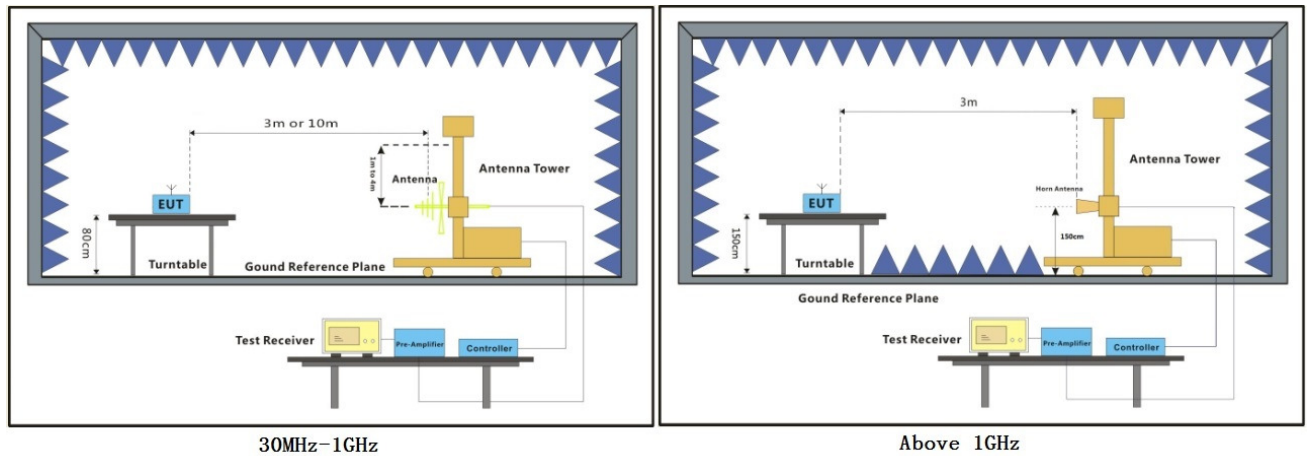
Final Test Mode: Through Pre-scan, find the DH1 of data type and 8DPSK modulation is the worst case.

Charge + Transmitting mode

For below 1GHz part, through pre-scan, the worst case is the lowest channel.

Only the worst case is recorded in the report.

7.9.2 Test Setup Diagram

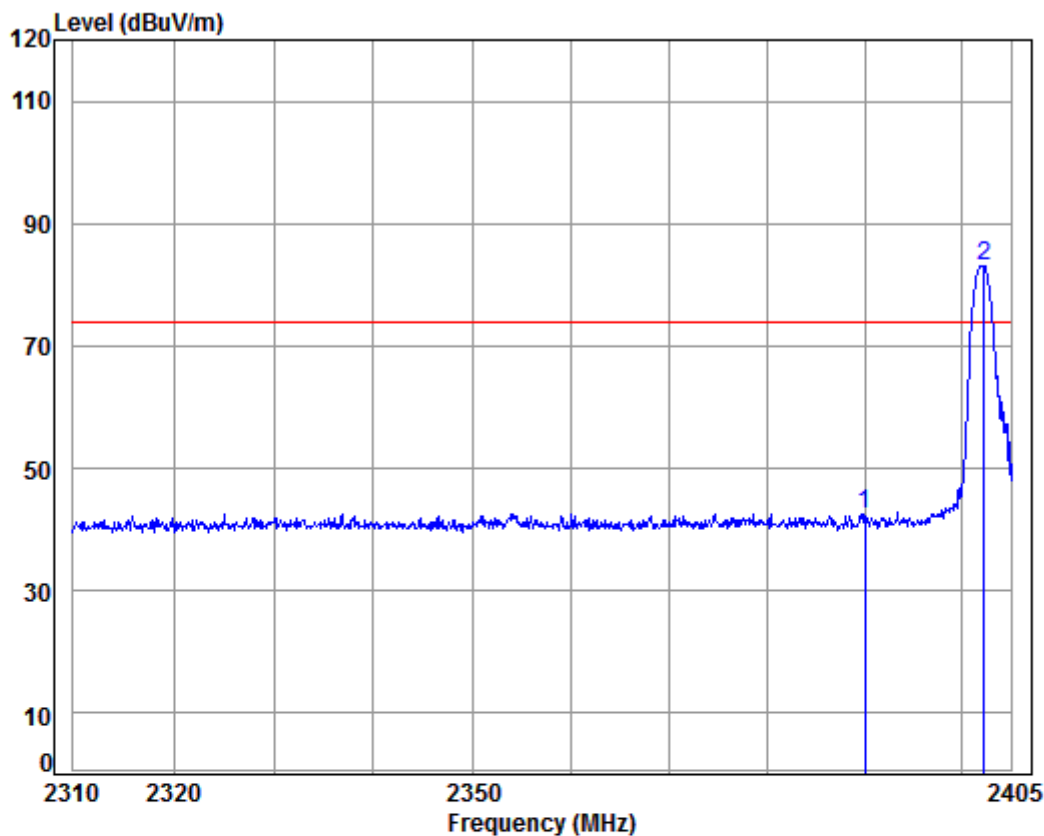


7.9.3 Measurement Data

- a. For below 1GHz, the EUT was placed on the top of a rotating table 0.8 meters above the ground at a 3 or 10 meter semi-anechoic chamber. The table was rotated 360 degrees to determine the position of the highest radiation.
- b. For above 1GHz, the EUT was placed on the top of a rotating table 1.5 meters above the ground at a 3 meter fully-anechoic chamber. The table was rotated 360 degrees to determine the position of the highest radiation.
- c. The EUT was set 3 or 10 meters away from the interference-receiving antenna, which was mounted on the top of a variable-height antenna tower.
- d. The antenna height is varied from one meter to four meters above the ground to determine the maximum value of the field strength. Both horizontal and vertical polarizations of the antenna are set to make the measurement.
- e. For each suspected emission, the EUT was arranged to its worst case and then the antenna was tuned to heights from 1 meter to 4 meters (for the test frequency of below 30MHz, the antenna was tuned to heights 1 meter) and the rotatable table was turned from 0 degrees to 360 degrees to find the maximum reading.
- f. The test-receiver system was set to Peak Detect Function and Specified Bandwidth with Maximum Hold Mode.
- g. If the emission level of the EUT in peak mode was 10dB lower than the limit specified, then testing could be stopped and the peak values of the EUT would be reported. Otherwise the emissions that did not have 10dB margin would be re-tested one by one using peak, quasi-peak or average method as specified and then reported in a data sheet.
- h. Test the EUT in the lowest channel, the middle channel, the Highest channel.
- i. The radiation measurements are performed in X, Y, Z axis positioning for Transmitting mode, and found the X axis positioning which it is the worst case.
- j. Repeat above procedures until all frequencies measured was complete.



Mode:b; Polarization:Horizontal; Modulation Type:GFSK; Channel:Low



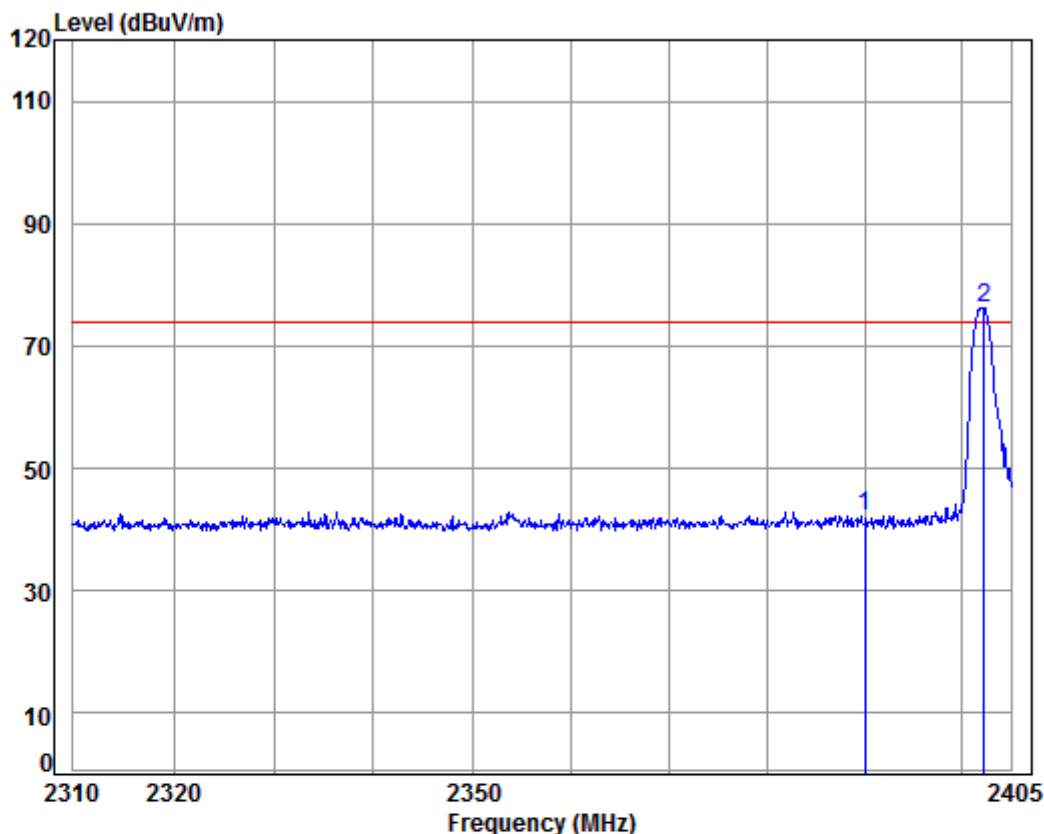
Condition: 3m Horizontal

Job No: : 02970CR

Mode: : 2402 Bandedge

	Freq	Cable	Ant	Preamp	Read	Limit	Over	
		Loss	Factor	Factor	Level	Line	Limit	Remark
	MHz	dB	dB/m	dB	dBuV	dBuV/m	dBuV/m	dB
1	2390.000	5.34	29.08	37.96	46.20	42.66	74.00	-31.34 Peak
2 pp	2402.191	5.35	29.11	37.96	86.45	82.95	74.00	8.95 Peak

Mode:b; Polarization:Vertical; Modulation Type:GFSK; Channel:Low



Condition: 3m Vertical

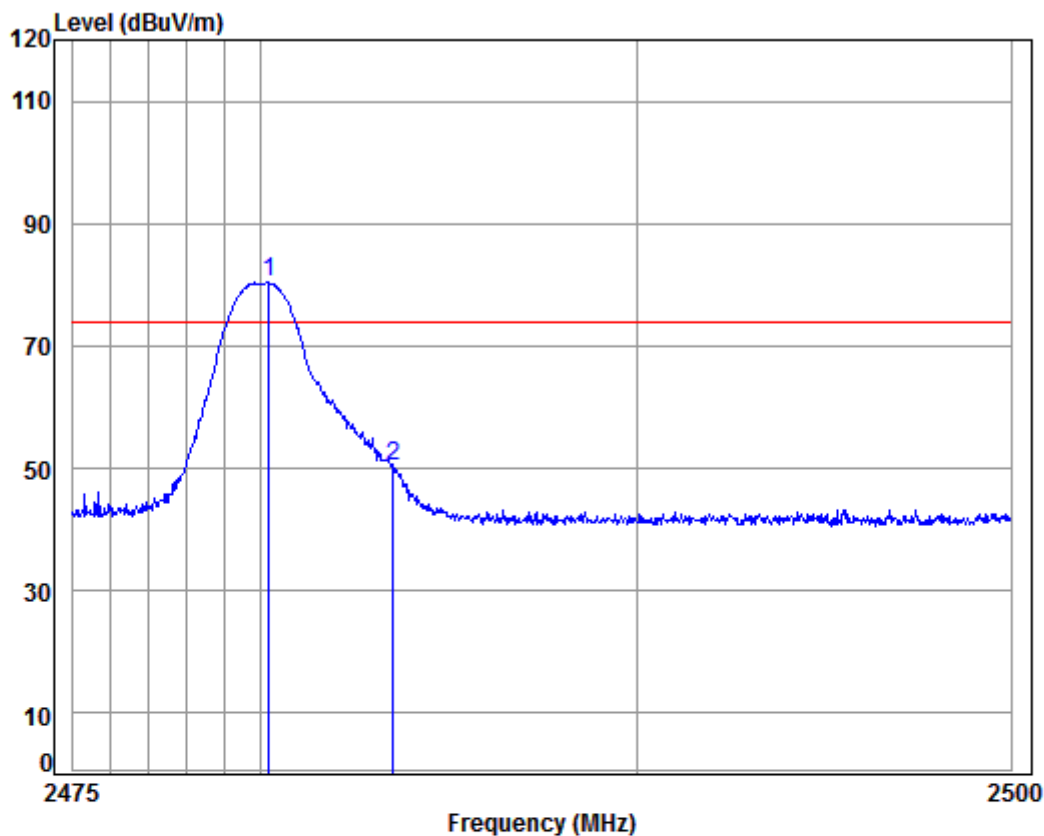
Job No: : 02970CR

Mode: : 2402 Bandedge

	Freq	Cable	Ant	Preamp	Read	Limit	Over	
		Loss	Factor	Factor	Level	Line	Limit	Remark
	MHz	dB	dB/m	dB	dBuV	dBuV/m	dBuV/m	dB
1	2390.000	5.34	29.08	37.96	45.62	42.08	74.00	-31.92 Peak
2 pp	2402.191	5.35	29.11	37.96	79.67	76.17	74.00	2.17 Peak



Mode:b; Polarization:Horizontal; Modulation Type:GFSK; Channel:High



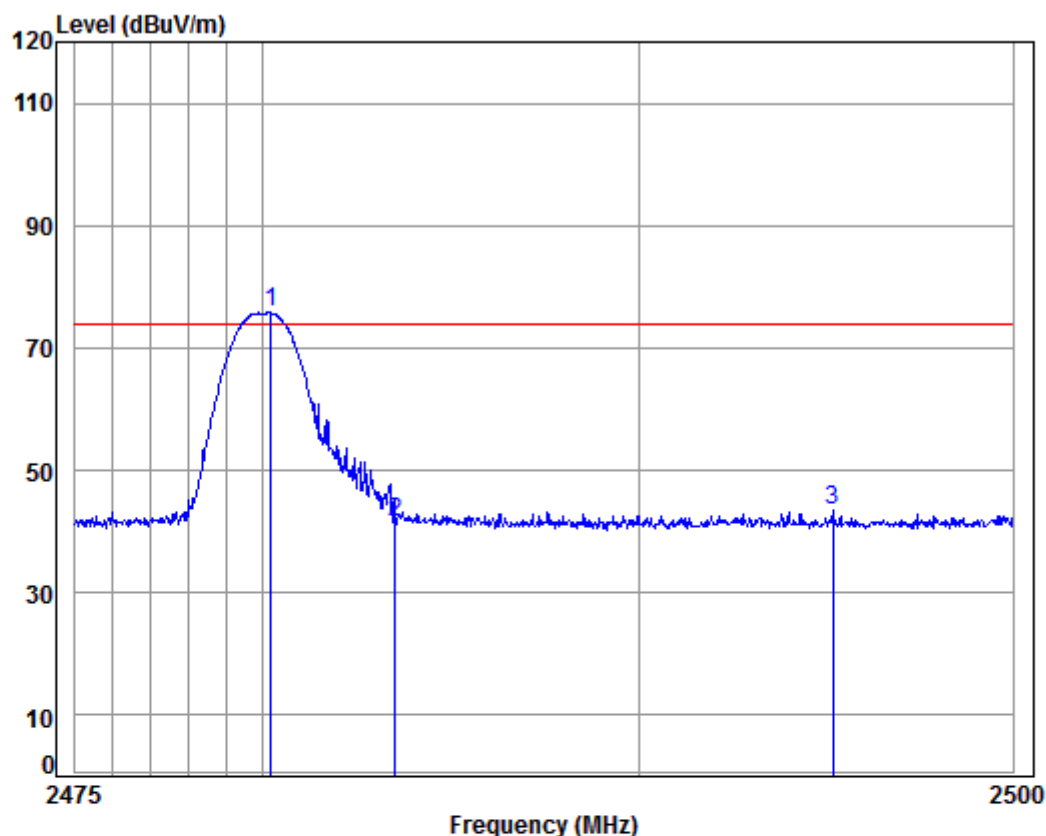
Condition: 3m HORIZONTAL

Job No: : 02970CR

Mode: : 2480 Bandedge

	Freq	Cable Loss	Ant Factor	Preamplifier Factor	Read Level	Limit Level	Limit Line	Over Limit	Remark
	MHz	dB	dB/m	dB	dBuV	dBuV/m	dBuV/m	dB	
1	pp 2480.204	5.41	29.34	37.95	83.49	80.29	74.00	6.29	Peak
2	2483.500	5.41	29.35	37.95	53.44	50.25	74.00	-23.75	Peak

Mode:b; Polarization:Vertical; Modulation Type:GFSK; Channel:High



Condition: 3m Vertical

Job No: : 02970CR

Mode: : 2480 Bandedge

		Cable	Ant	Preamp	Read	Limit	Over	
	Freq	Loss	Factor	Factor	Level	Level	Line	Limit Remark
	MHz	dB	dB/m	dB	dBuV	dBuV/m	dBuV/m	dB
1 pp	2480.204	5.41	29.34	37.95	78.97	75.77	74.00	1.77 Peak
2	2483.500	5.41	29.35	37.95	44.56	41.37	74.00	-32.63 Peak
3	2495.180	5.42	29.39	37.95	46.72	43.58	74.00	-30.42 Peak

7.10 Conducted Band Edges Measurement

Test Requirement 47 CFR Part 15, Subpart C 15.247(d)

Test Method: ANSI C63.10 (2013) Section 7.8.6

7.10.1 E.U.T. Operation

Operating Environment:

Temperature: 23.0 °C

Humidity: 56 % RH

Atmospheric Pressure: 1015 mbar

Exploratory Test Mode: Hopping and Non-hopping transmitting with all kind of modulation and all kind of data type

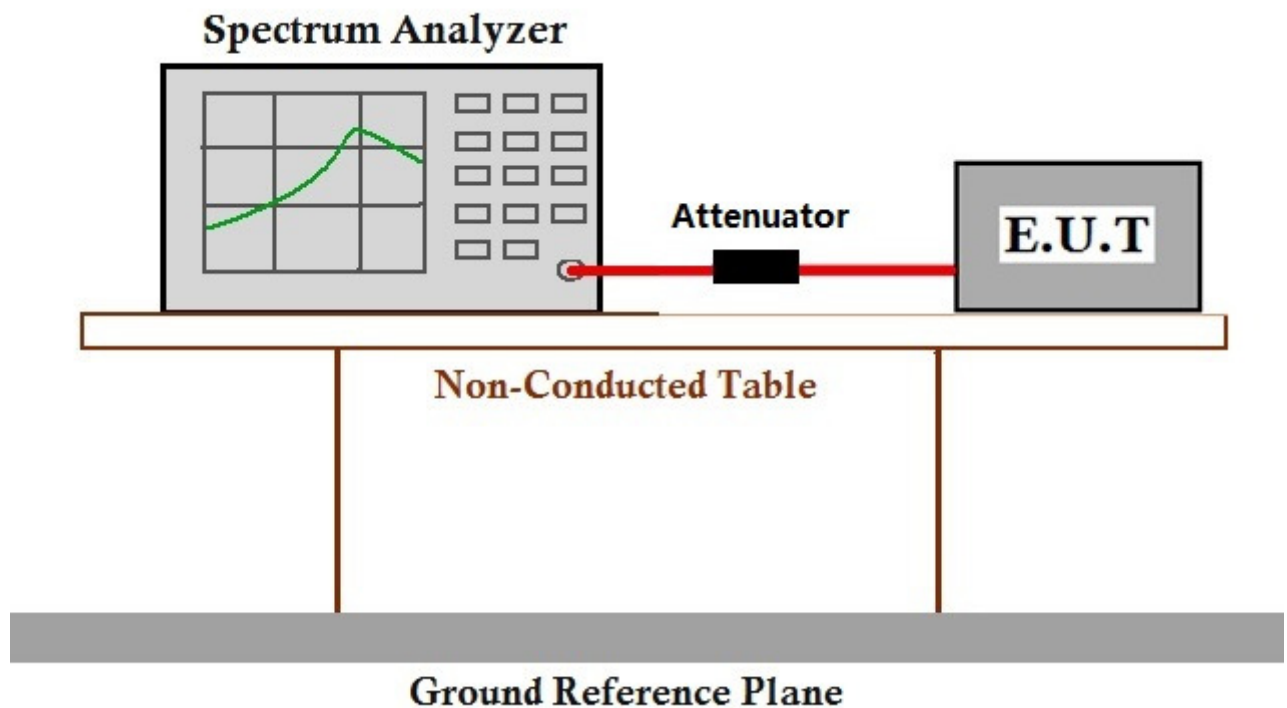
Transmitting mode and Charge + Transmitting mode.

Final Test Mode: Through Pre-scan, find the DH1 of data type is the worst case of GFSK modulation type.

Charge + Transmitting mode

Only the worst case is recorded in the report.

7.10.2 Test Setup Diagram



7.10.3 Measurement Data

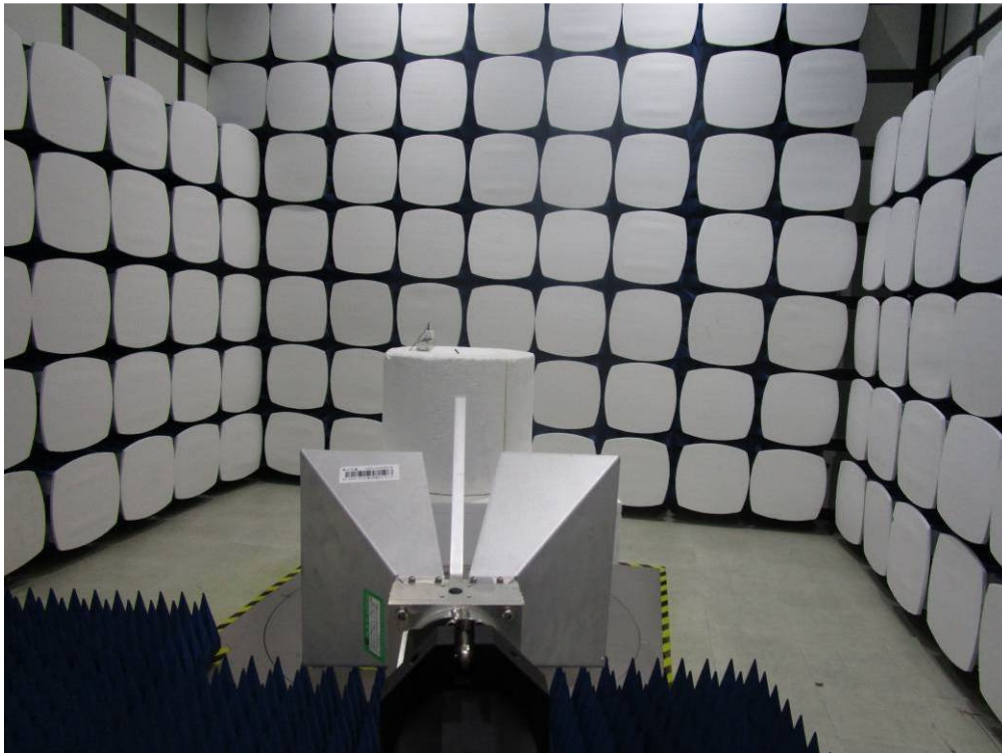
The detailed test data see: Appendix 15.247

8 Photographs

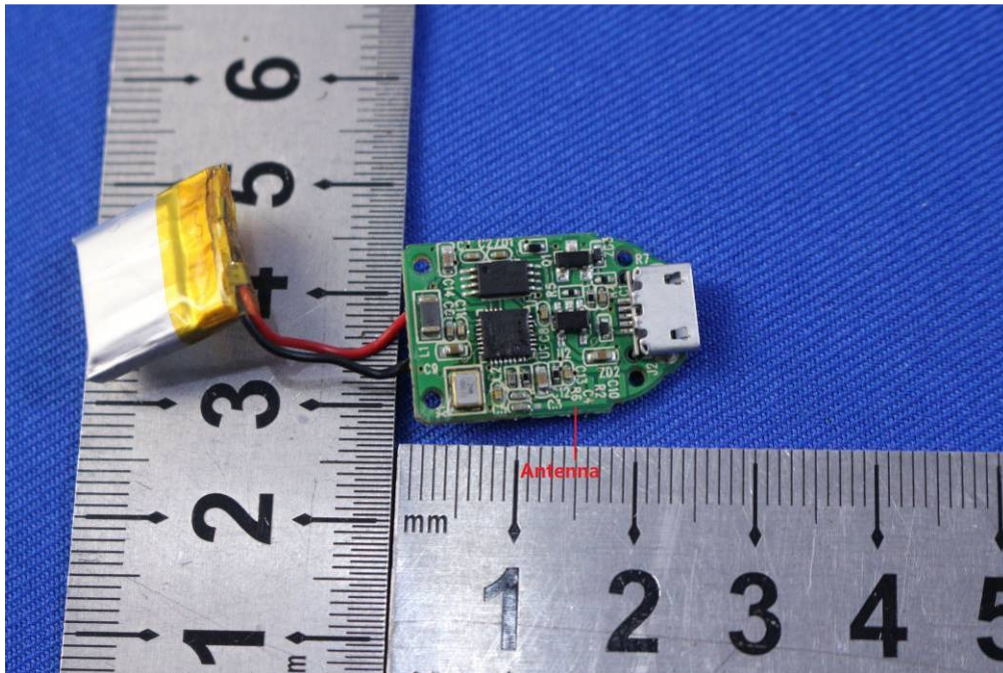
8.1 Conducted Disturbance at AC Power Line(150kHz-30MHz) Test Setup



8.2 Radiated Spurious Emissions Test Setup

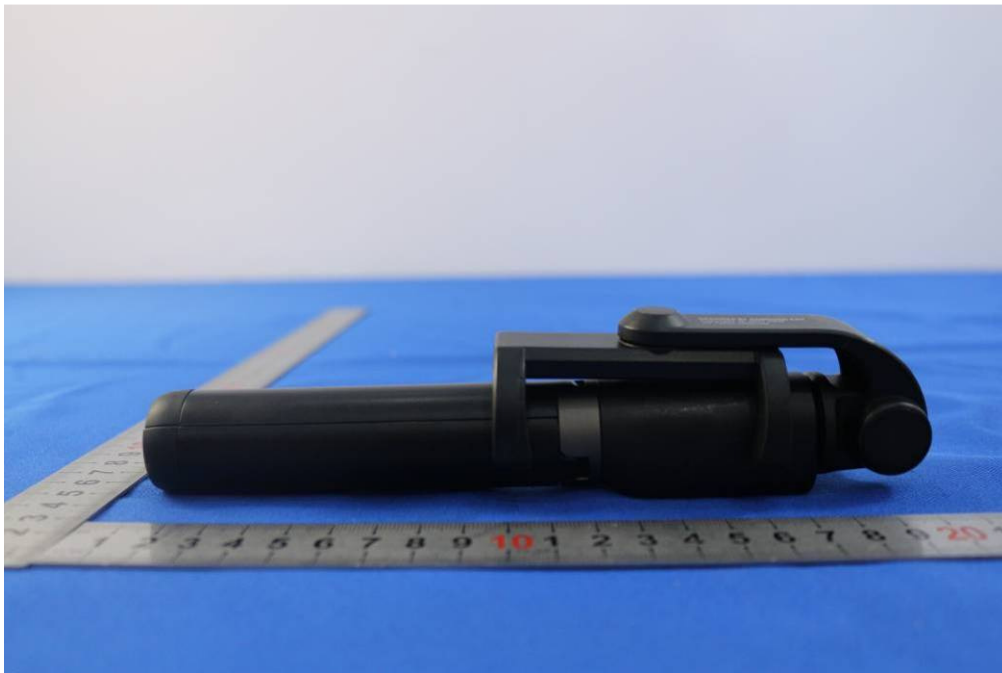


8.3 Antenna Requirement Test Setup

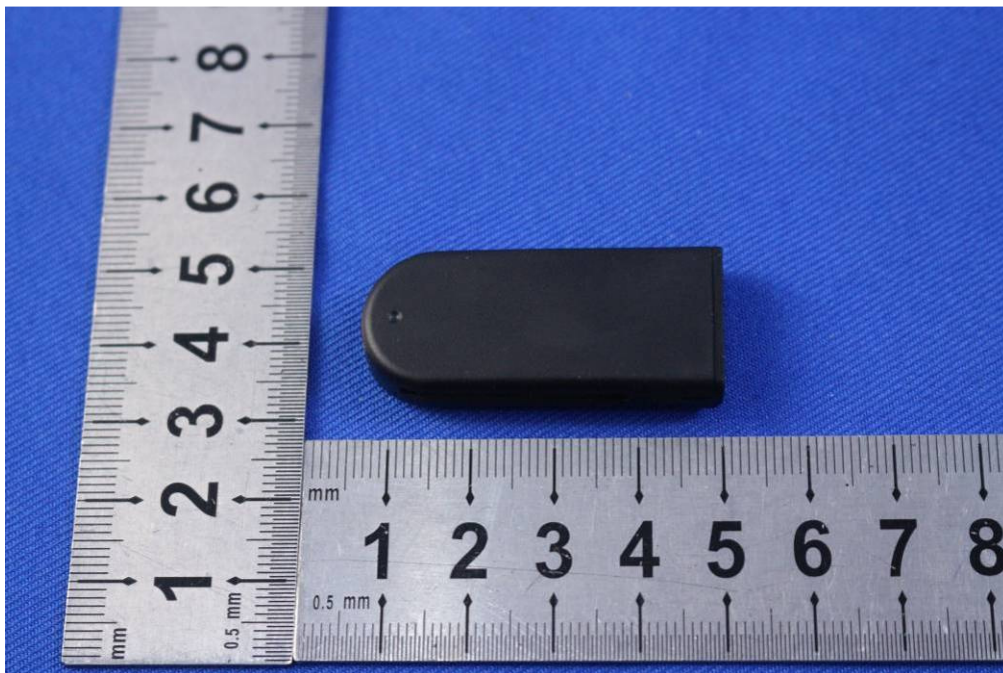


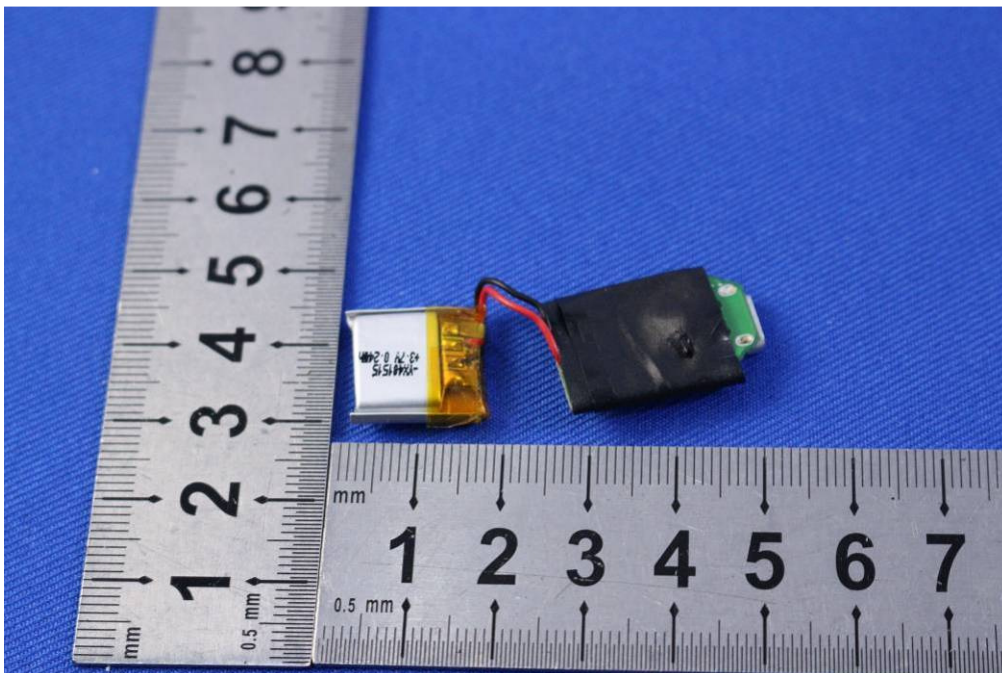
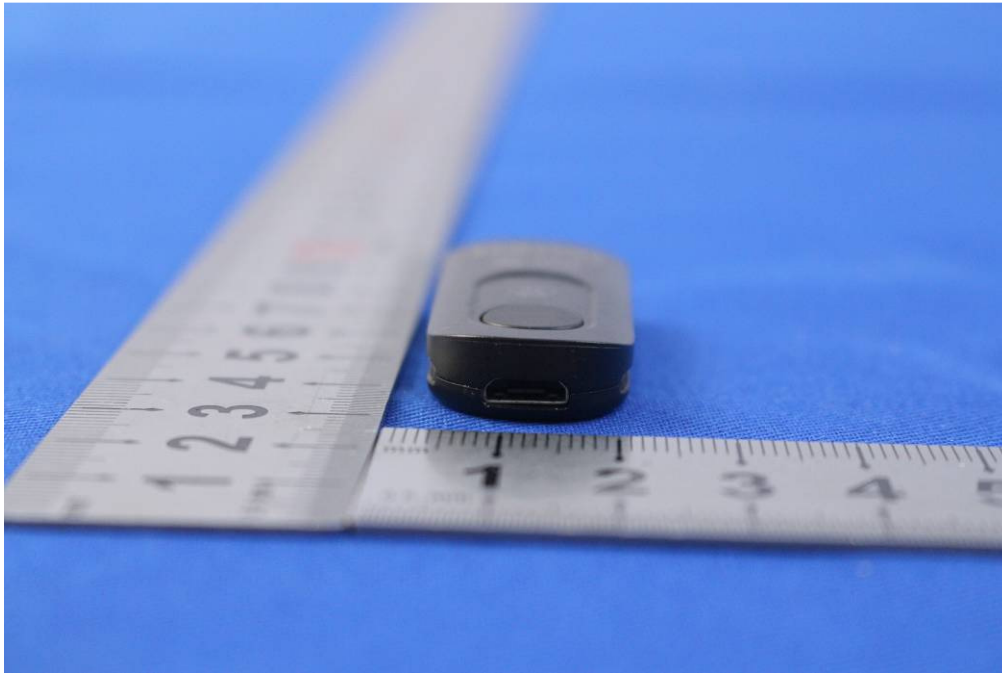
8.4 EUT Constructional Details

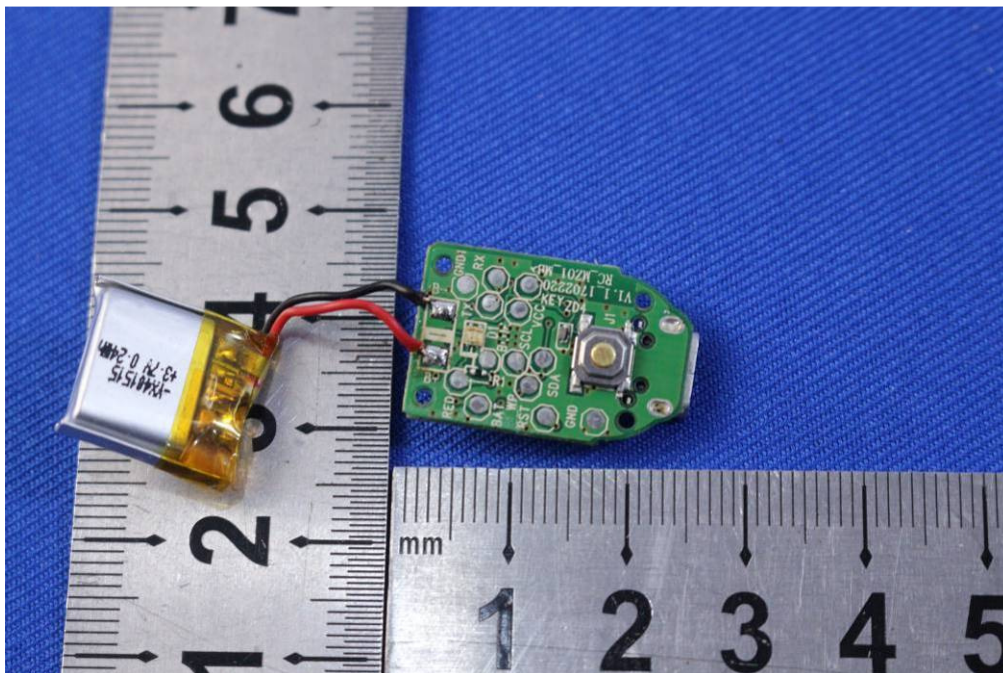
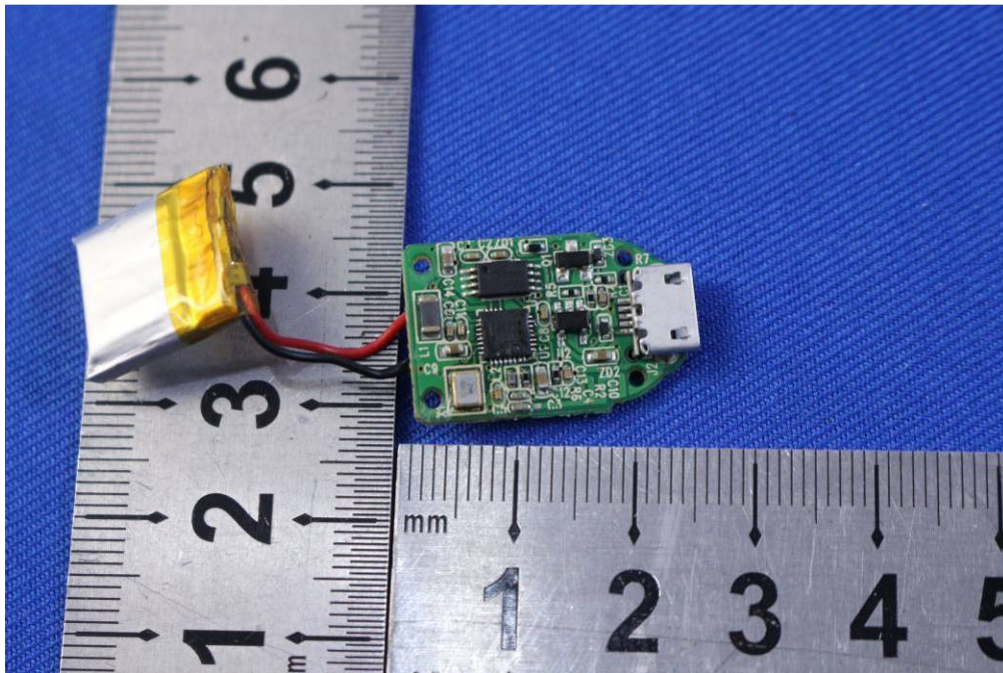


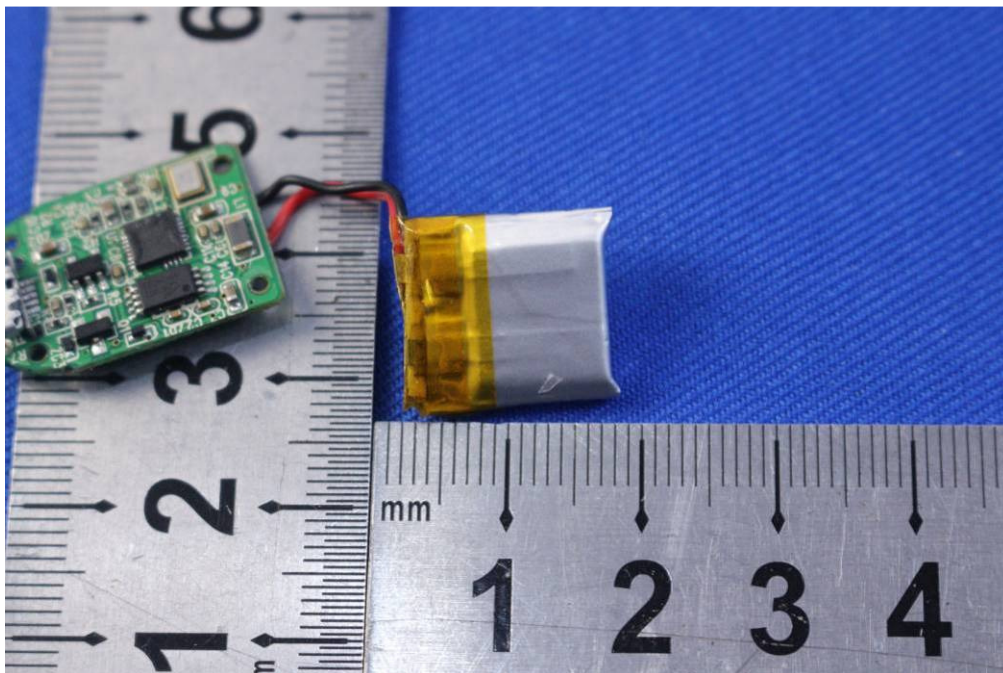
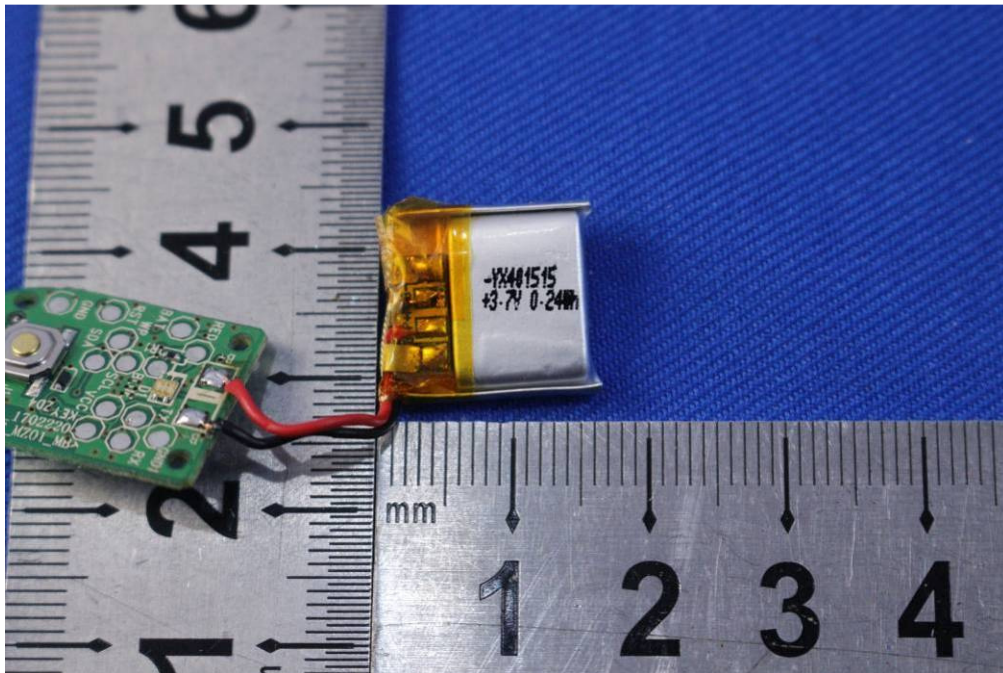












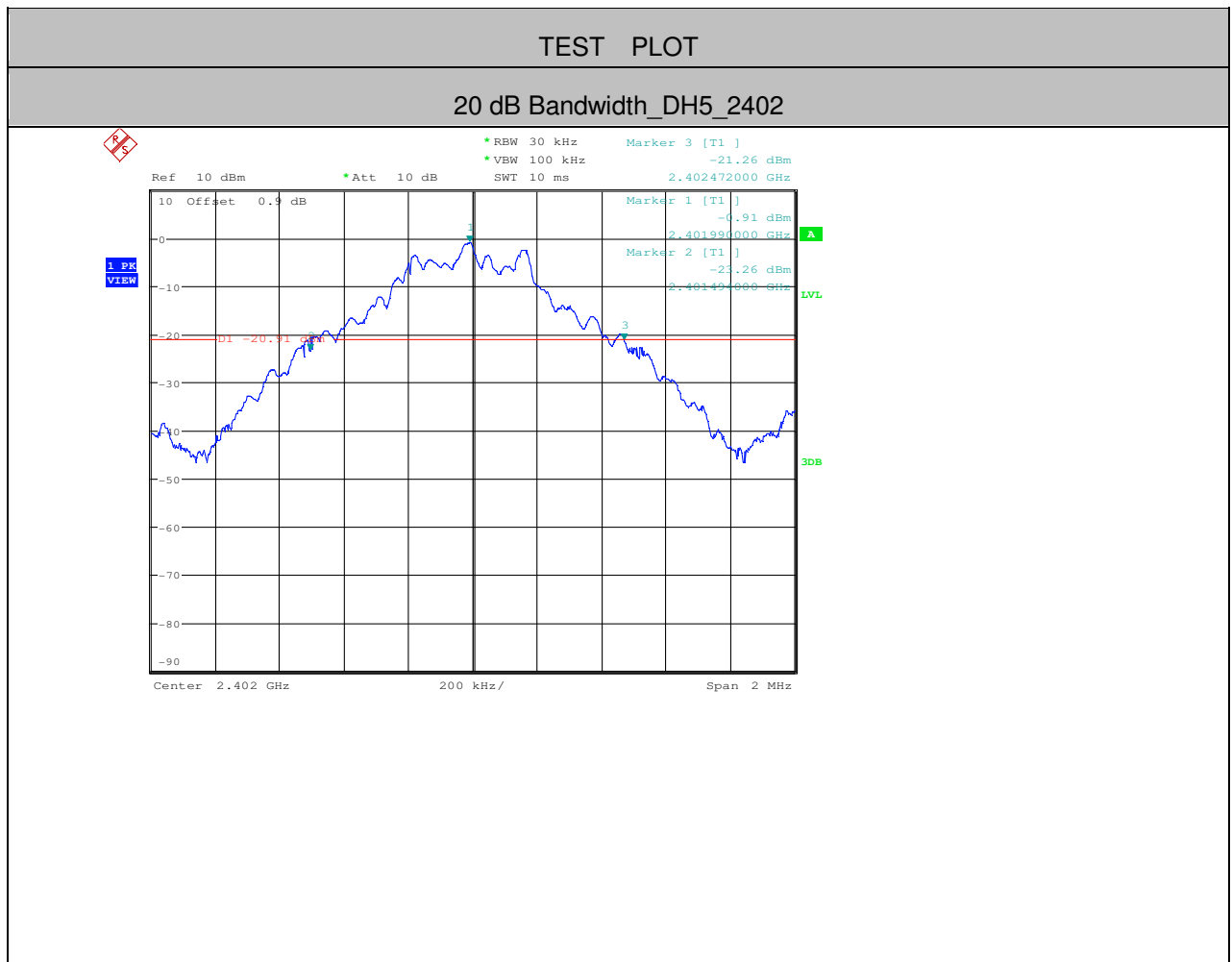


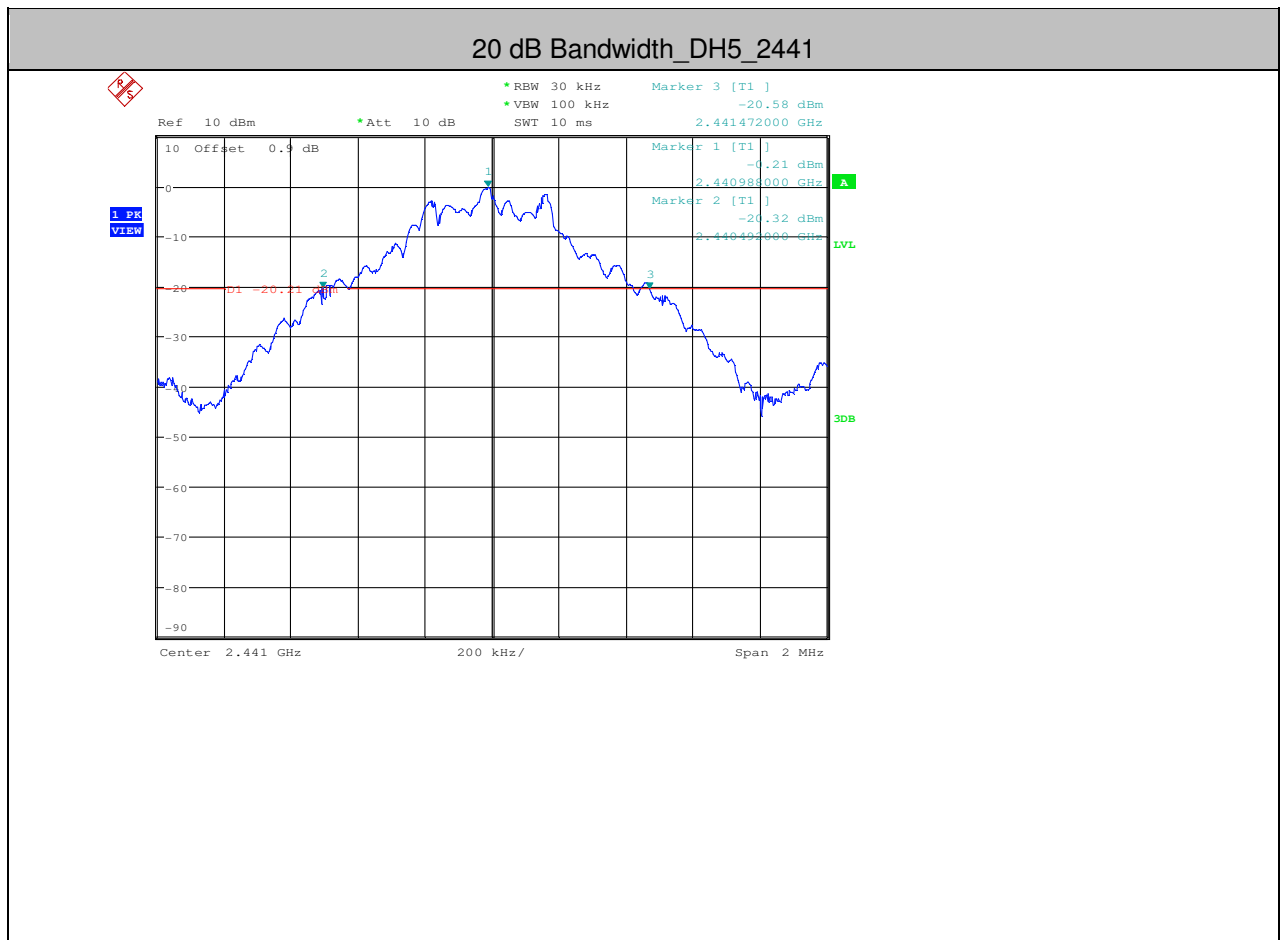
9 Appendix

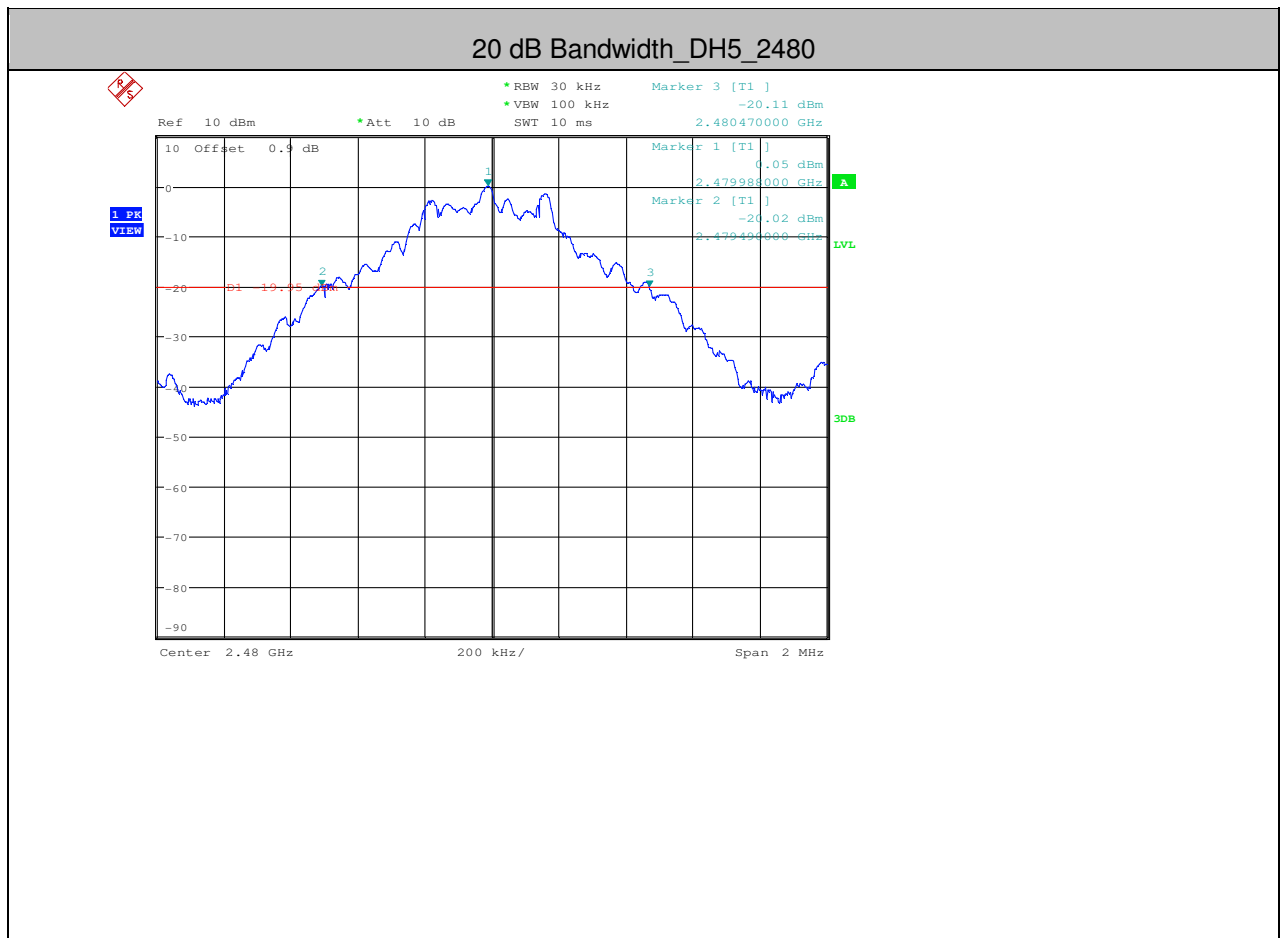
9.1 Appendix 15.247

1.20 dB Bandwidth

Test Mode	Test Channel	EBW[MHz]	Limit[MHz]	Verdict
DH5	2402	0.978	---	PASS
DH5	2441	0.980	---	PASS
DH5	2480	0.980	---	PASS



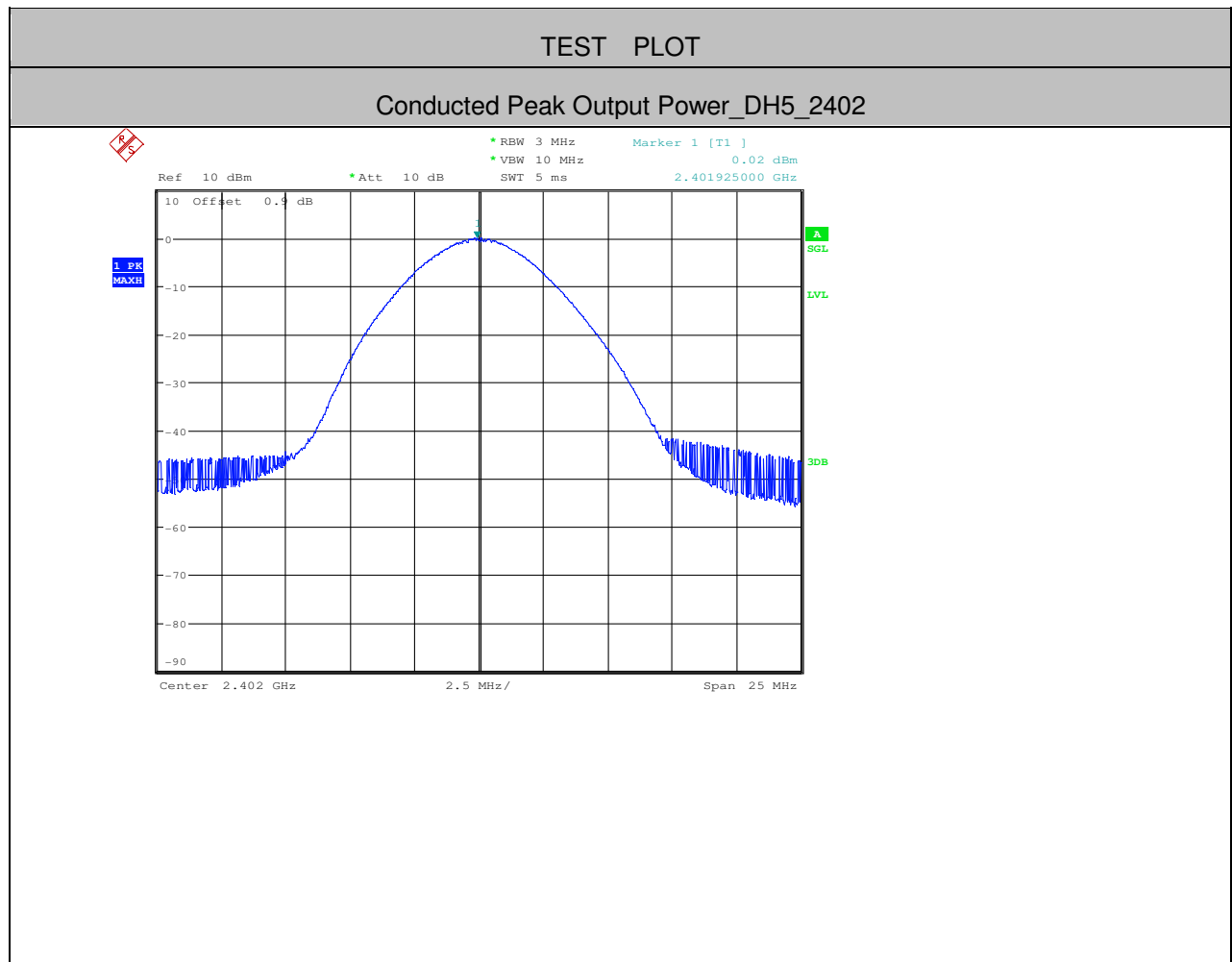






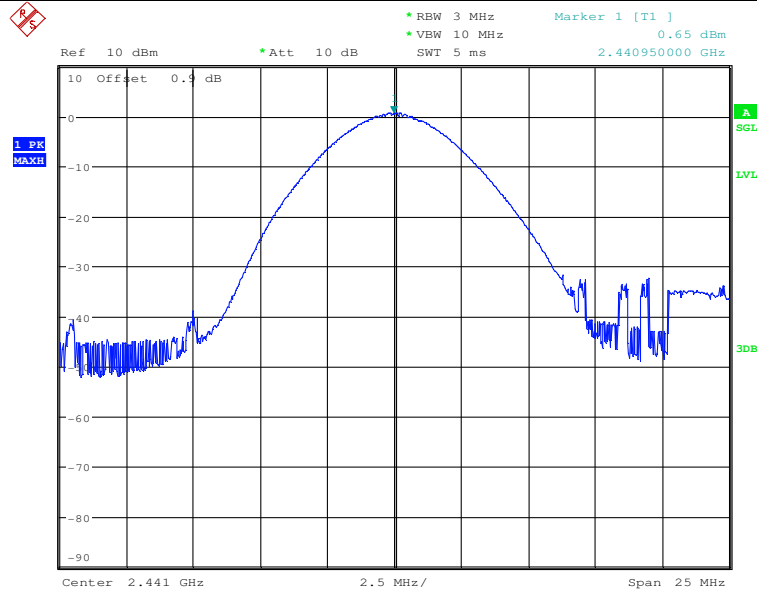
2. Conducted Peak Output Power

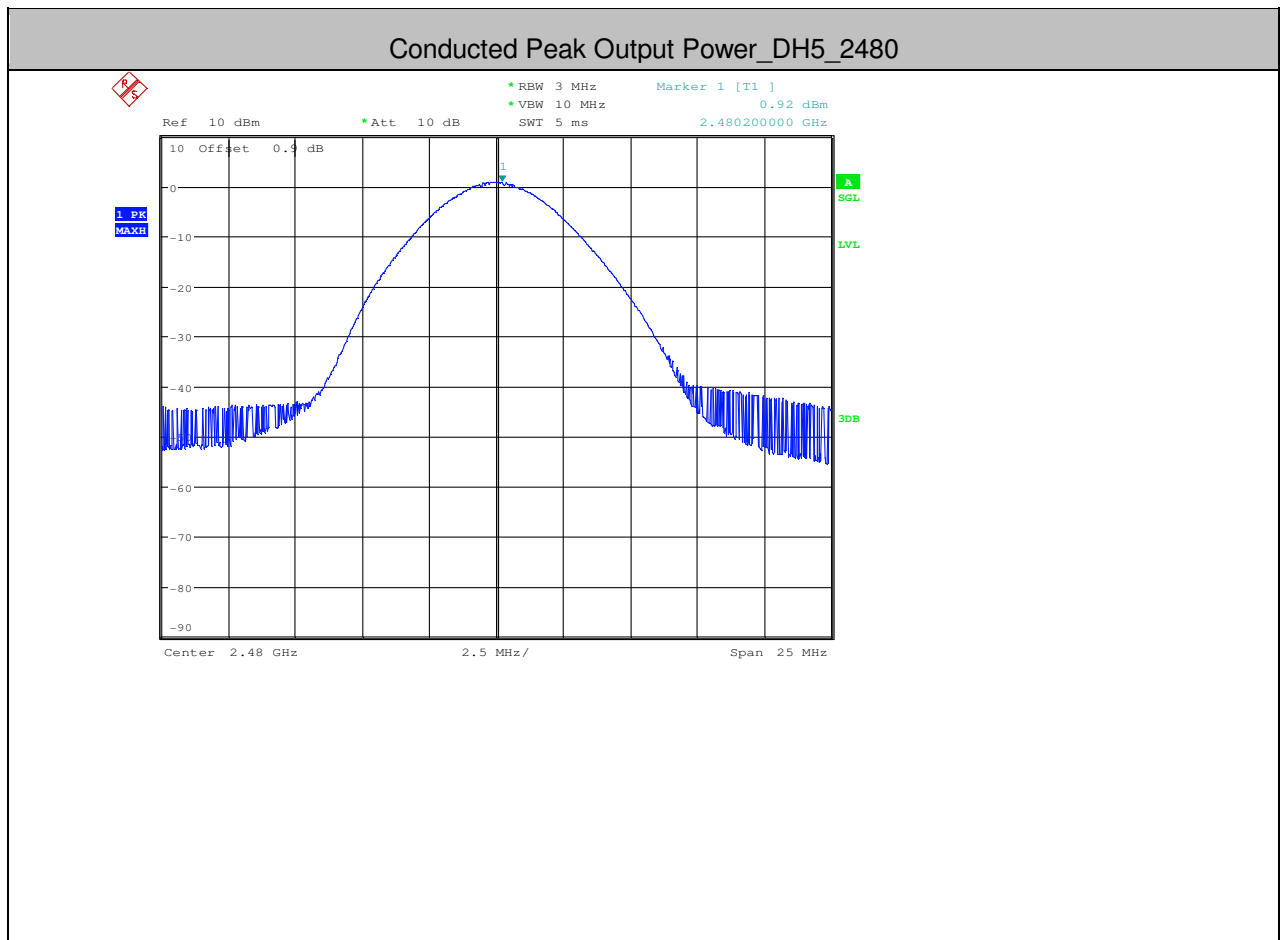
Test Mode	Test Channel	Power[dBm]	Limit[dBm]	Verdict
DH5	2402	0.02	<20.97	PASS
DH5	2441	0.65	<20.97	PASS
DH5	2480	0.92	<20.97	PASS





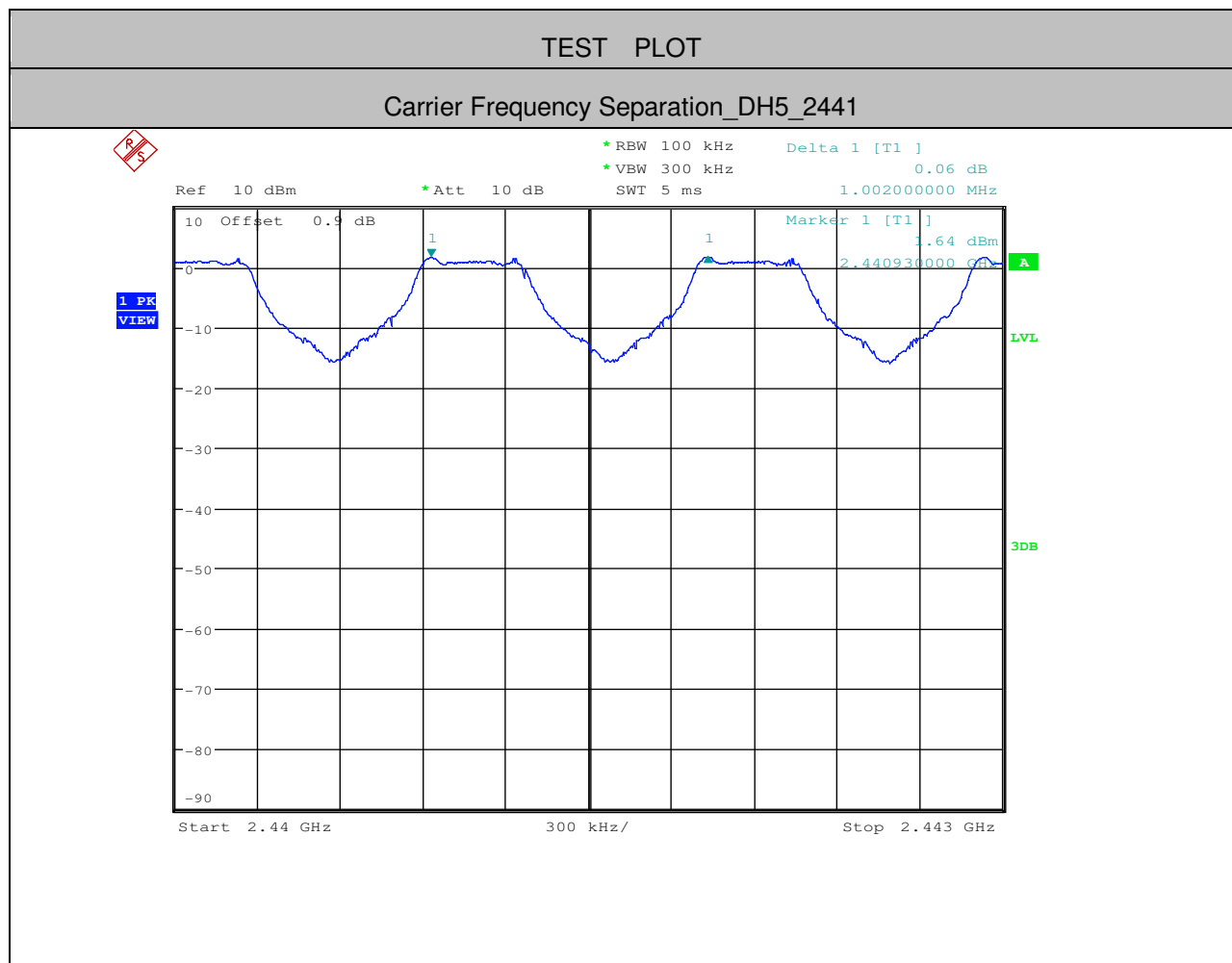
Conducted Peak Output Power_DH5_2441





3.Carrier Frequency Separation

Test Mode	Test Channel	Result[MHz]	Limit[MHz]	Verdict
DH5	2441	1.002	>=0.653	PASS





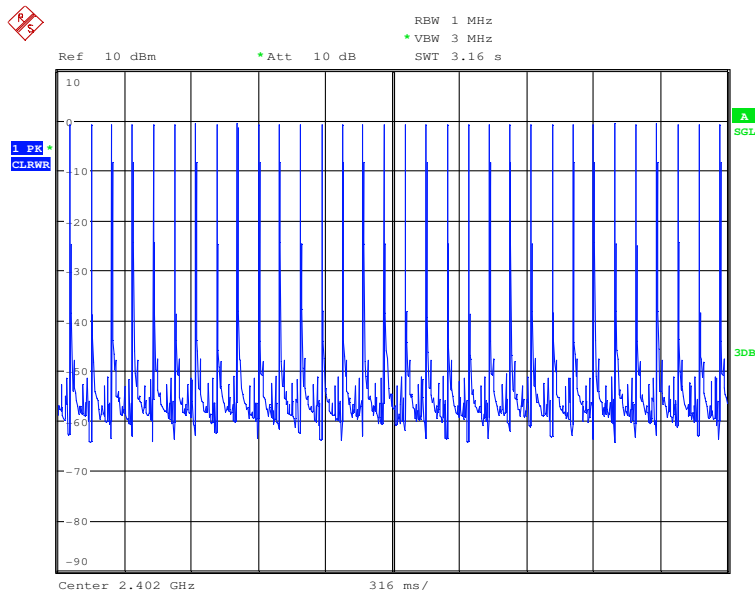
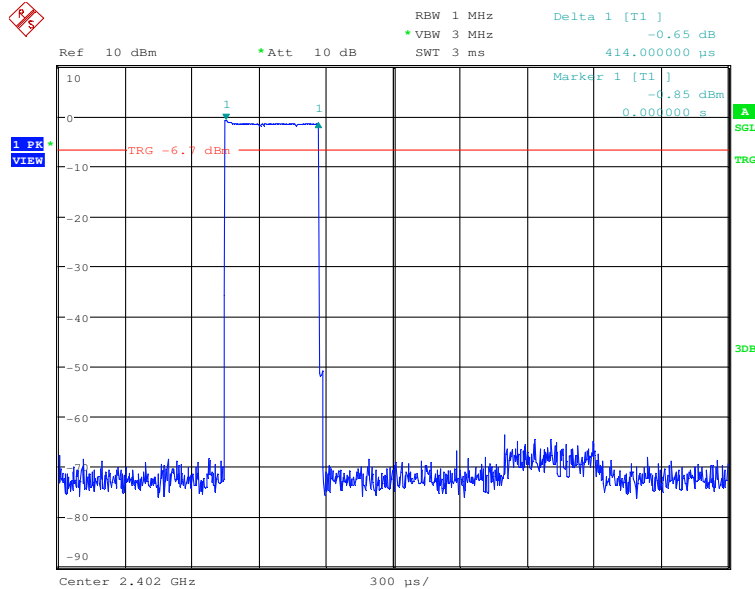
4.Dwell Time

Test Mode	Test Channel	Burst Width[ms/hop/ch]	Total Hops[hop*ch]	Dwell Time[s]	Limit[s]	Verdict
DH1	2402	0.41	320	0.131	<0.4	PASS
DH3	2402	1.68	160	0.269	<0.4	PASS
DH5	2402	2.92	100	0.292	<0.4	PASS



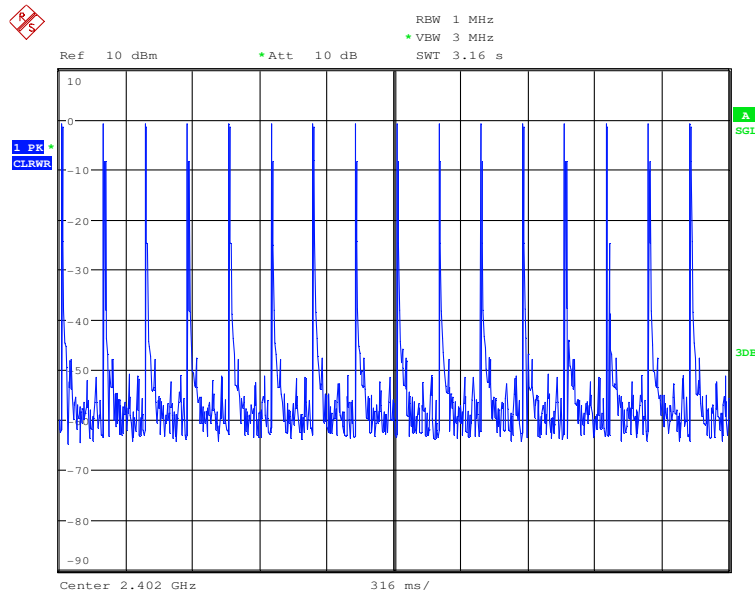
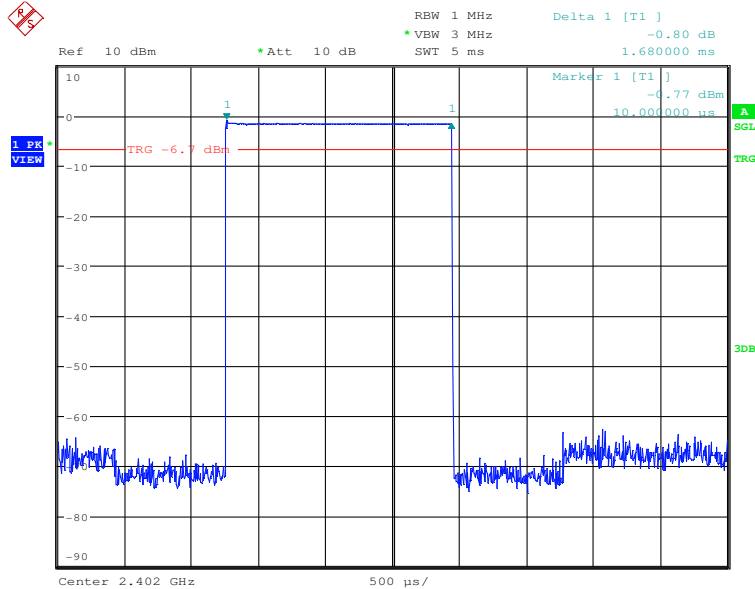
TEST PLOT

Dwell Time_DH1_2402



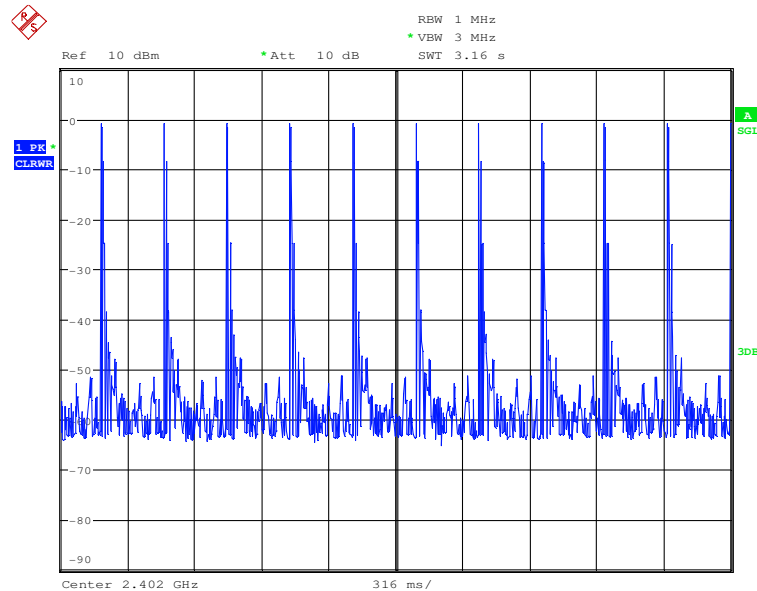
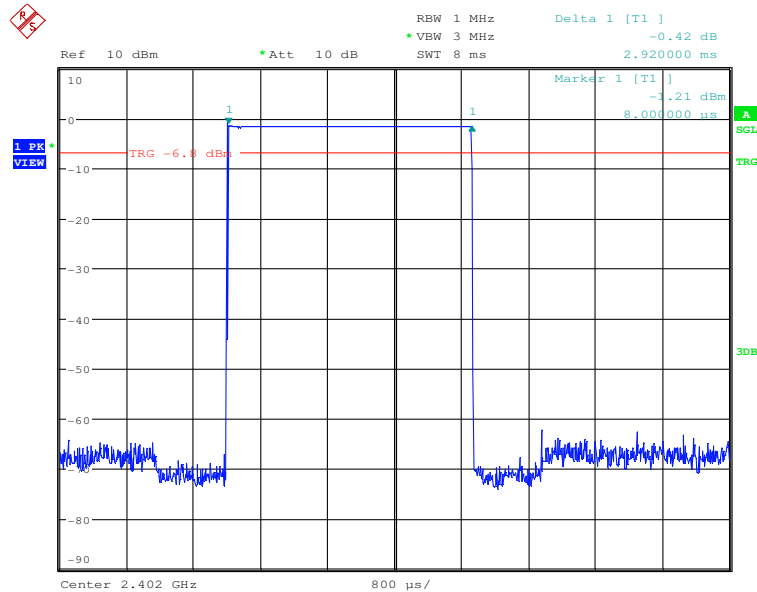


Dwell Time_DH3_2402





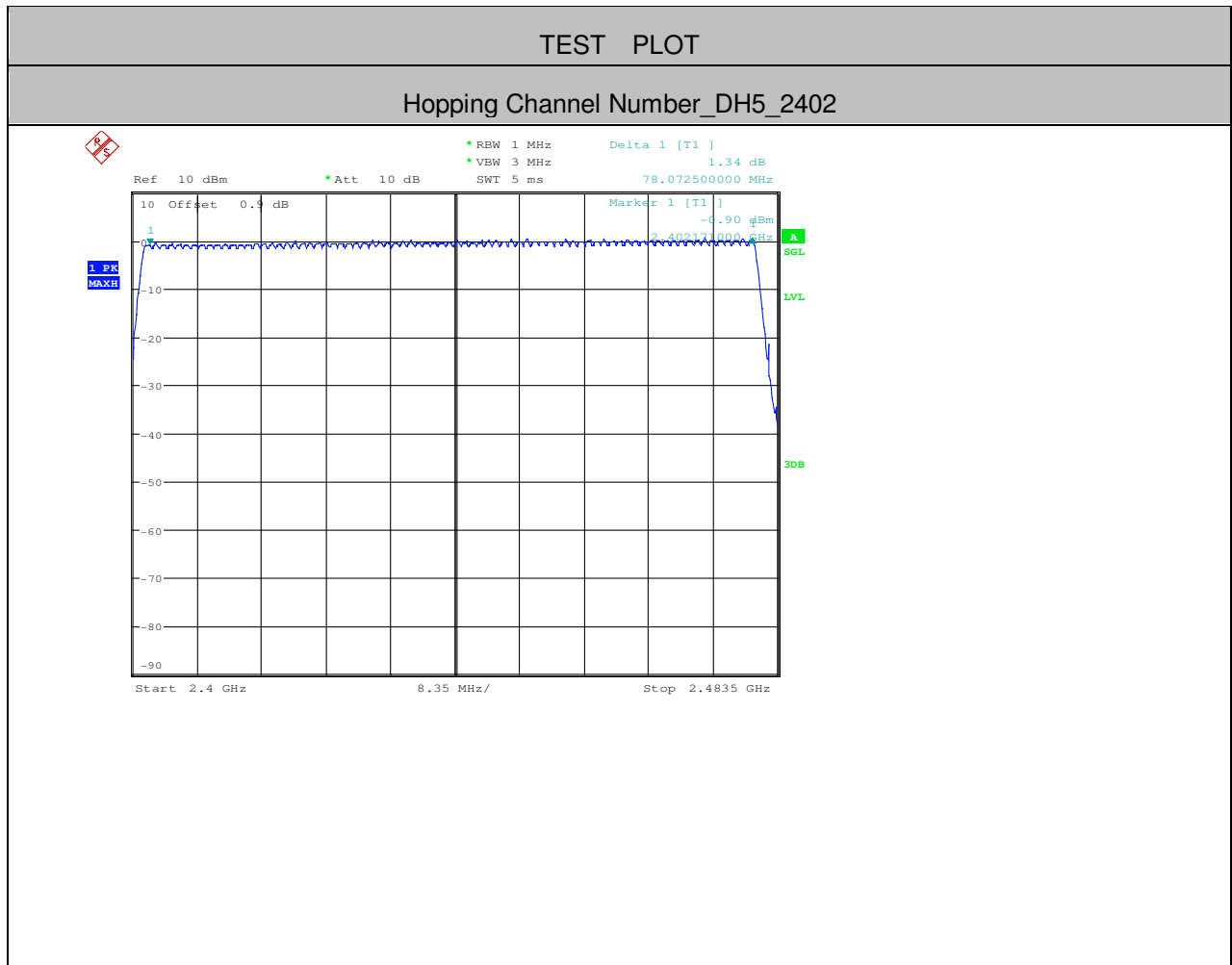
Dwell Time_DH5_2402





5.Hopping Channel Number

Test Mode	Test Channel	Number of Hopping Channel[N]	Limit[N]	Verdict
DH5	2402	79	>=15	PASS





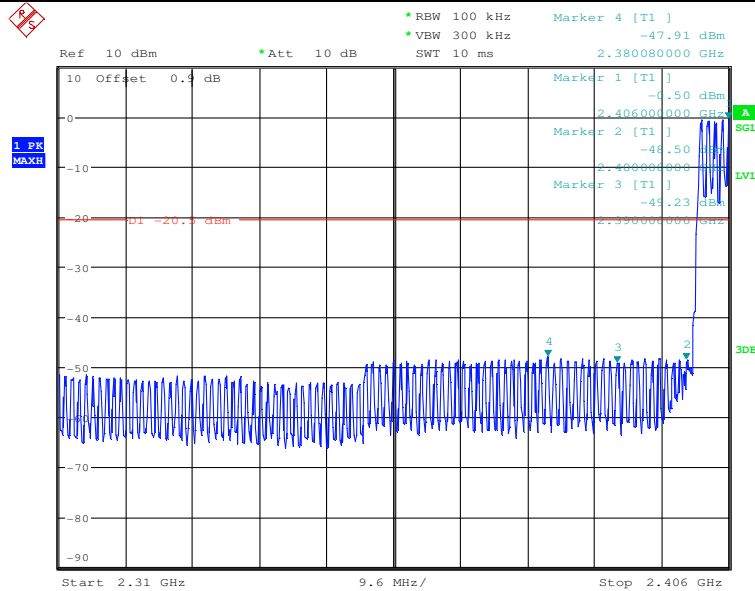
6. Band-edge for RF Conducted Emissions

Test Mode	Test Channel	Hopping	Carrier Power[dBm]	Max. Spurious Level [dBm]	Limit[dBm]	Verdict
DH5	2402	On	-0.500	-47.912	<-20.5	PASS
DH5	2402	Off	-0.860	-48.809	<-20.86	PASS
DH5	2480	On	-0.350	-47.960	<-20.35	PASS
DH5	2480	Off	0.190	-47.406	<-19.81	PASS



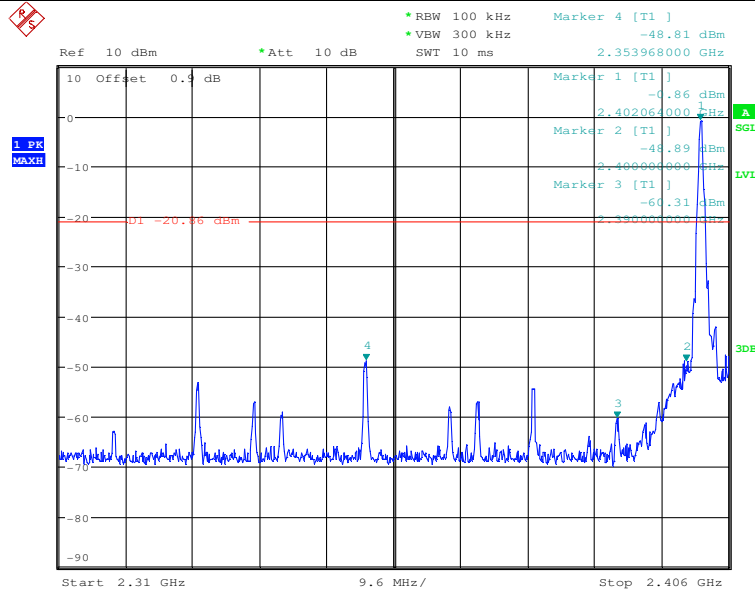
TEST PLOT

Band-edge for RF Conducted Emissions_DH5_2402_Hopping On



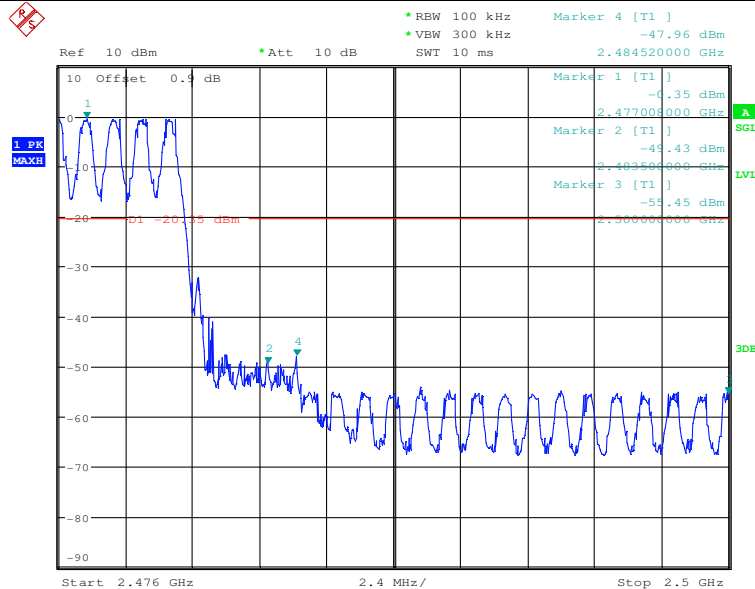


Band-edge for RF Conducted Emissions_DH5_2402_Hopping Off



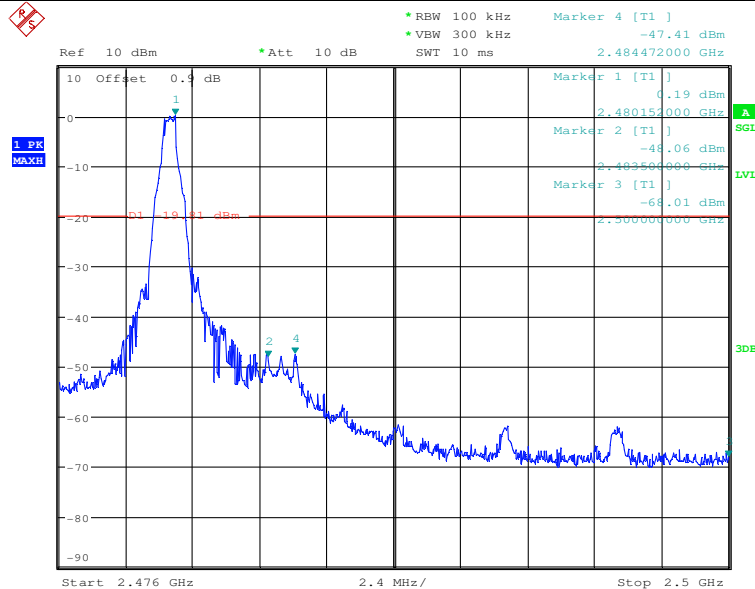


Band-edge for RF Conducted Emissions_DH5_2480_Hopping On





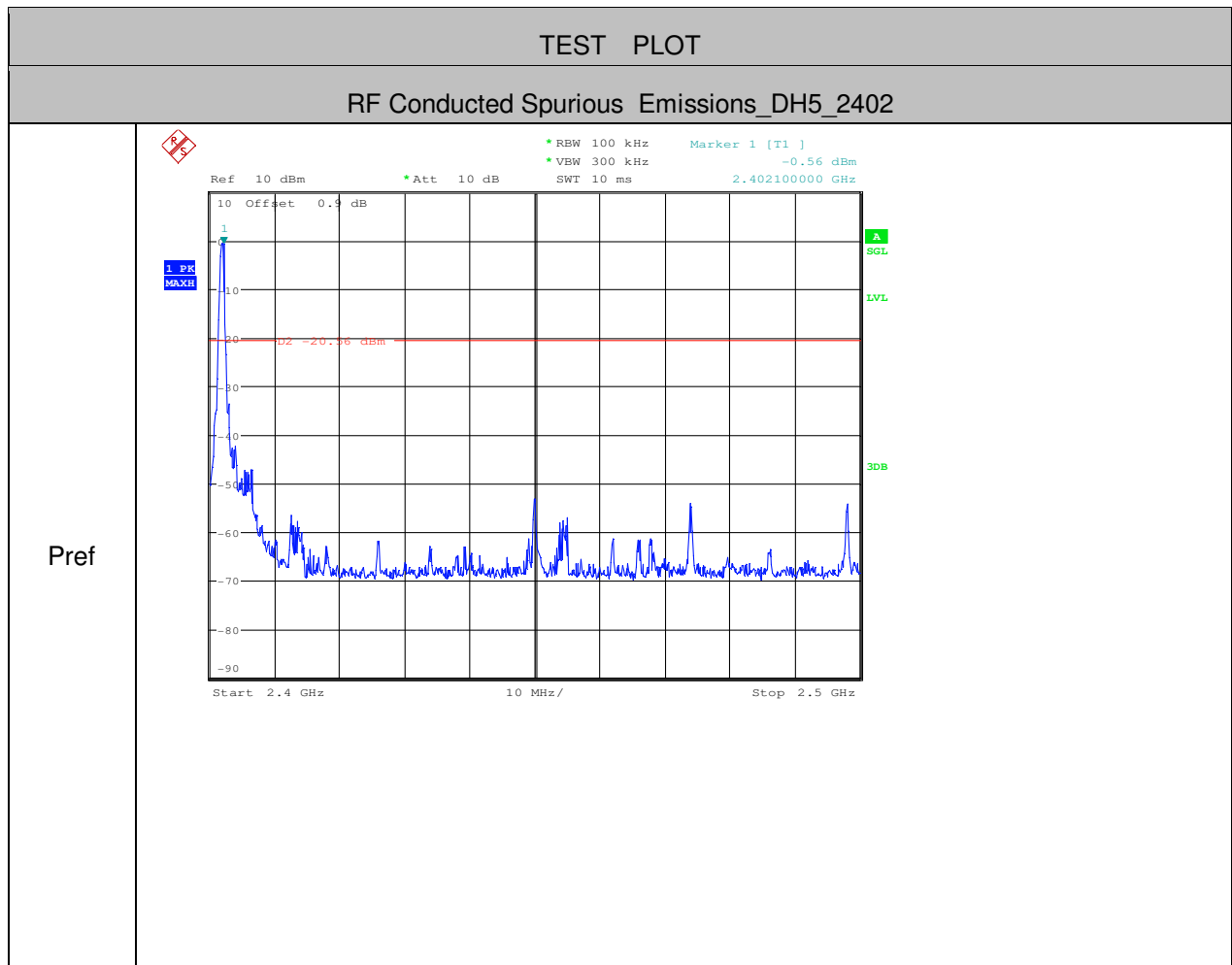
Band-edge for RF Conducted Emissions_DH5_2480_Hopping Off

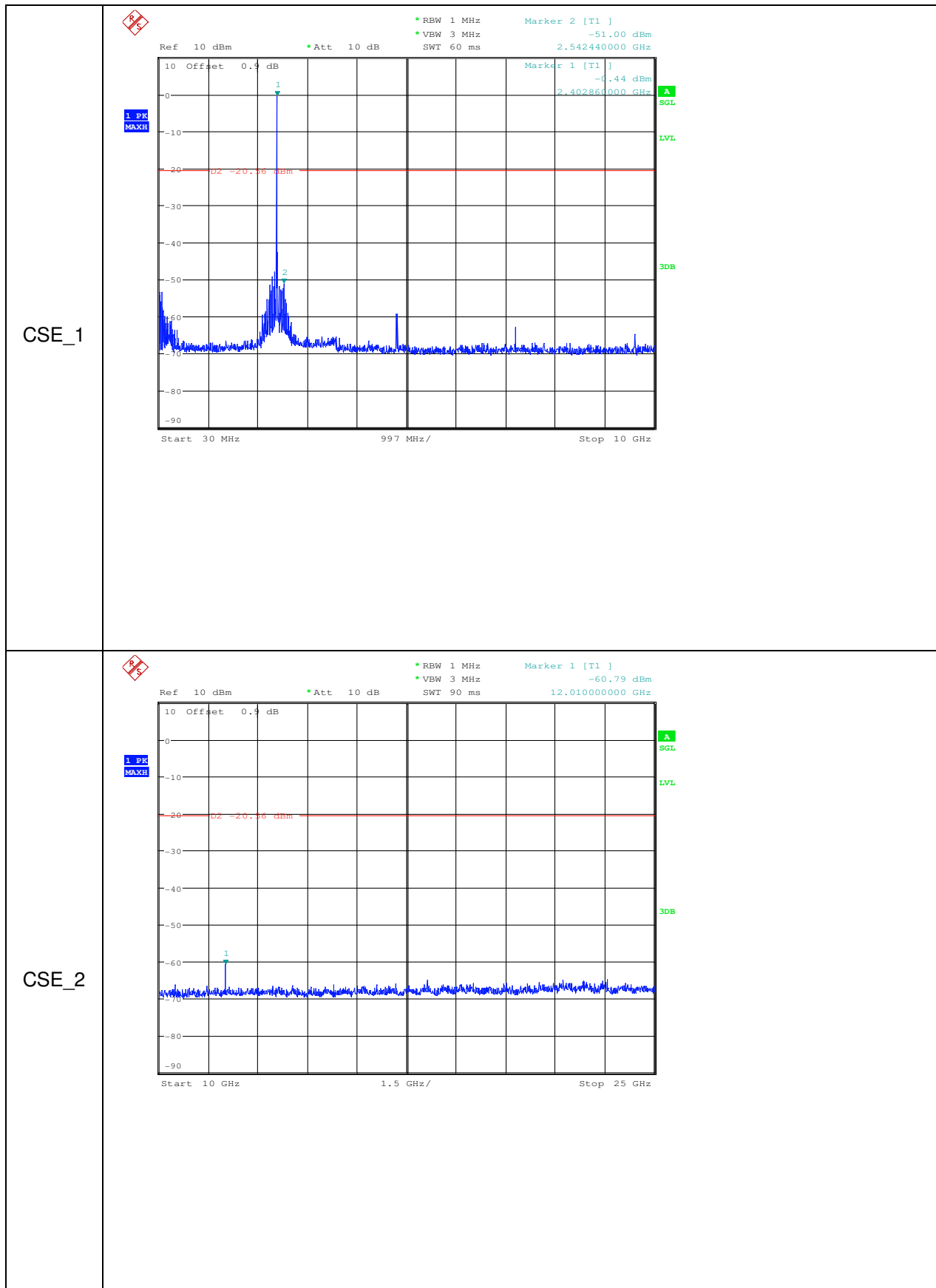




7.RF Conducted Spurious Emissions

Test Mode	Test Channel	StartFre [MHz]	StopFre [MHz]	RBW [kHz]	VBW [kHz]	Pref[dBm]	Max. Level [dBm]	Limit [dBm]	Verdict
DH5	2402	30	10000	1000	3000	-0.56	-51.000	<- 20.56	PASS
DH5	2402	10000	25000	1000	3000	-0.56	-60.790	<- 20.56	PASS
DH5	2441	30	10000	1000	3000	-0.04	-50.490	<- 20.04	PASS
DH5	2441	10000	25000	1000	3000	-0.04	-60.550	<- 20.04	PASS
DH5	2480	30	10000	1000	3000	0.24	-50.760	<- 19.76	PASS
DH5	2480	10000	25000	1000	3000	0.24	-55.050	<- 19.76	PASS

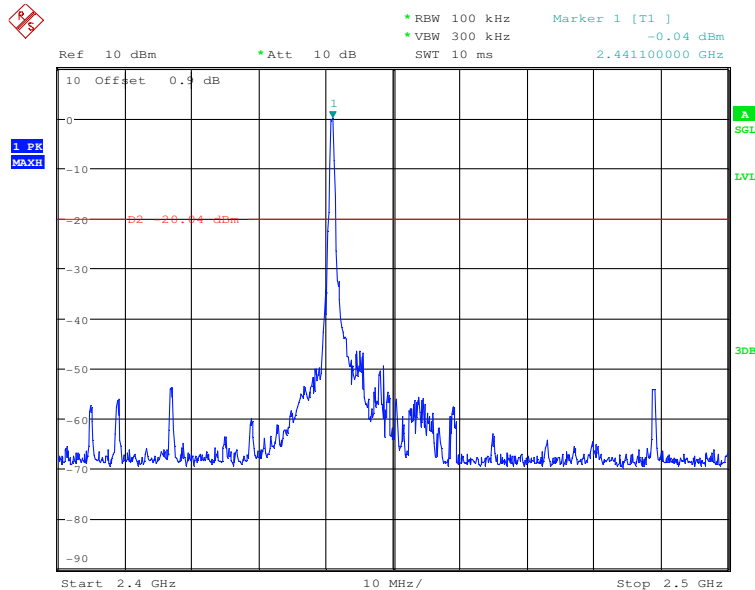


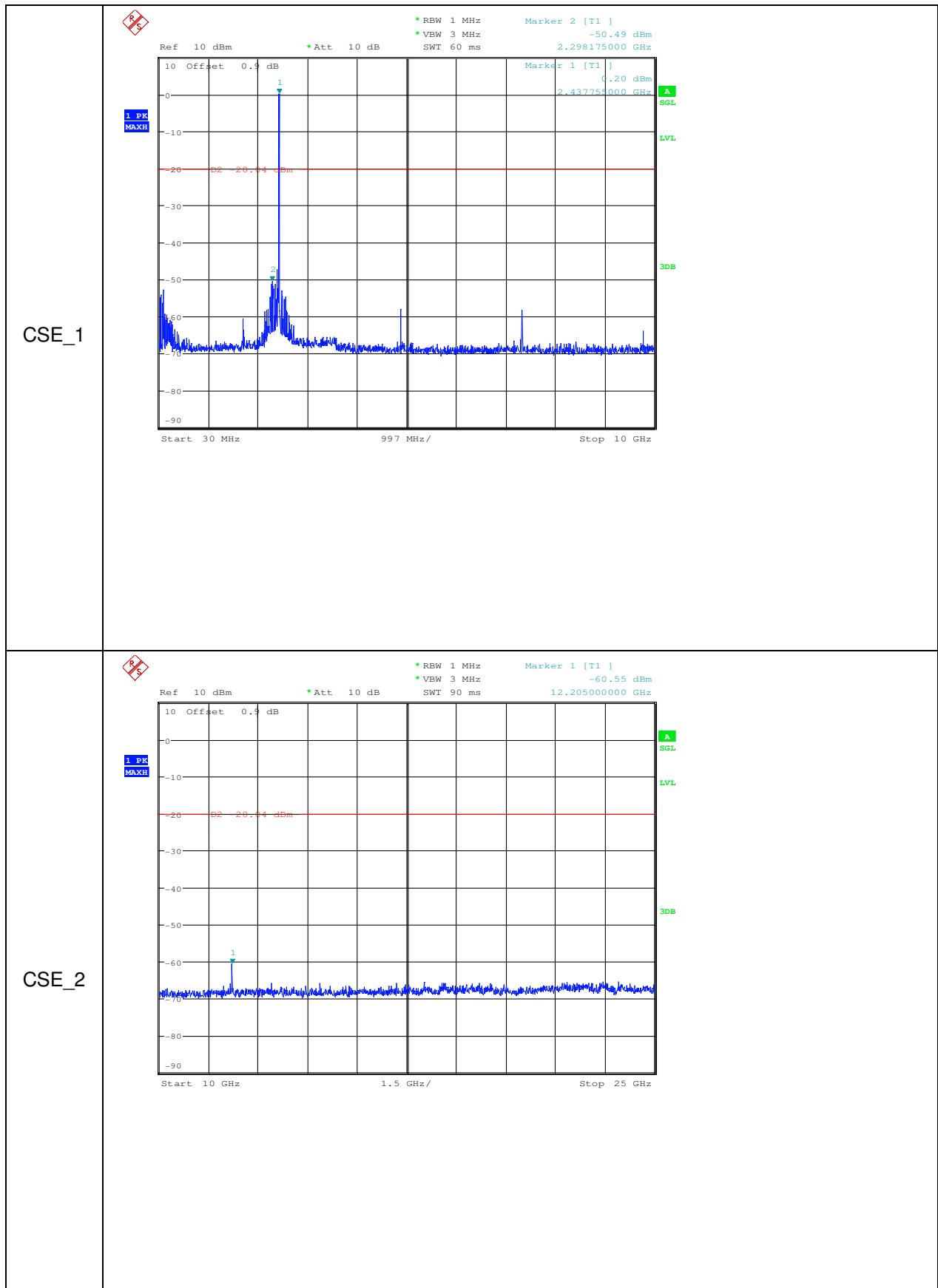




RF Conducted Spurious Emissions_DH5_2441

Pref

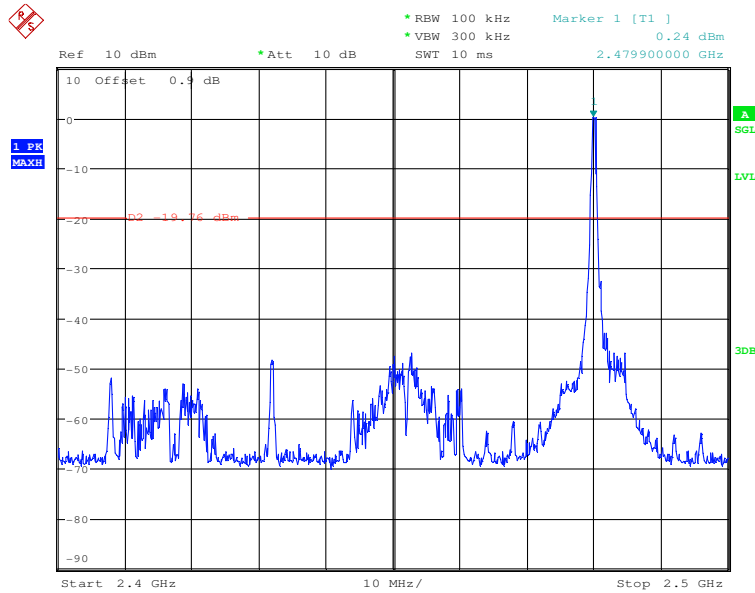






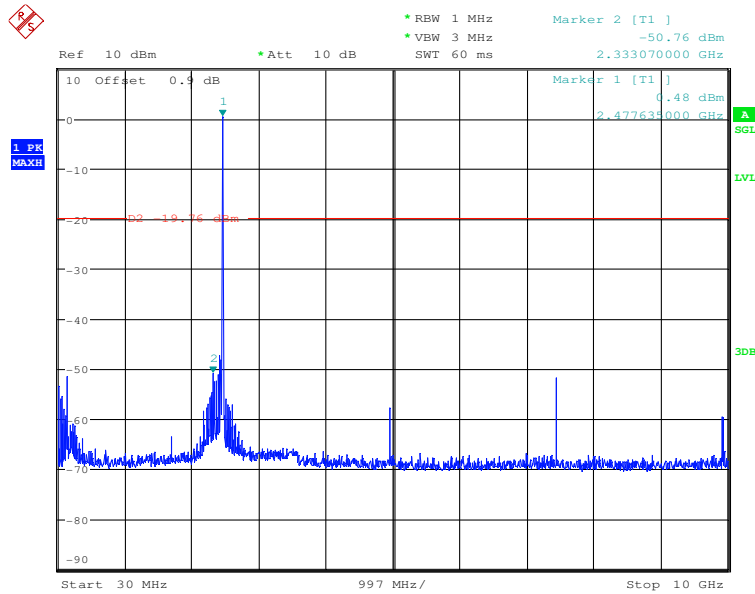
RF Conducted Spurious Emissions_DH5_2480

Pref





CSE_1



CSE_2

