

CETECOM™

Test report no.: 1-0493/15-01-01_AnnexA

Annex A

CETECOM™

CETECOM ICT Services
consulting - testing - certification >>>

This test report annex is electronically signed and valid without handwriting signature. For verification of the electronic signatures, the public keys can be requested at the testing laboratory.

Test report annex authorised:

David Lang
Lab Manager
Radio Communications & EMC

External photos of the EUT

Photo 1 (EUT front view):



Photo 2 (EUT rear view):



The image shows a black, rectangular electronic device, possibly a power supply or a control unit, resting on a white grid background. The device has a red connector on the left side and a small metal bracket at the bottom. The top surface features technical specifications and a barcode.

Technical specifications visible on the top surface include:

- Model: 5000-10
- Power: 10W
- Input: 100-240V AC
- Output: 5V DC
- Current: 2.0A
- Efficiency: >85%
- Temperature: 0°C to 40°C
- Humidity: 10% to 90%
- Dimensions: 100mm x 60mm x 20mm
- Weight: 10g

A barcode is also visible on the top surface.

The image shows the bottom of a black Mercedes-Benz battery. The battery is rectangular with two silver terminals at the bottom. A label on the top surface (visible from this angle) contains the following information:

- Model: D-WMS 2015 A
- Part Number: A2139009803
- Capacity: 50Ah
- Voltage: 12V
- Barcode: A2139009803
- Manufacturer: Mercedes-Benz

Photo 5 (EUT side view):

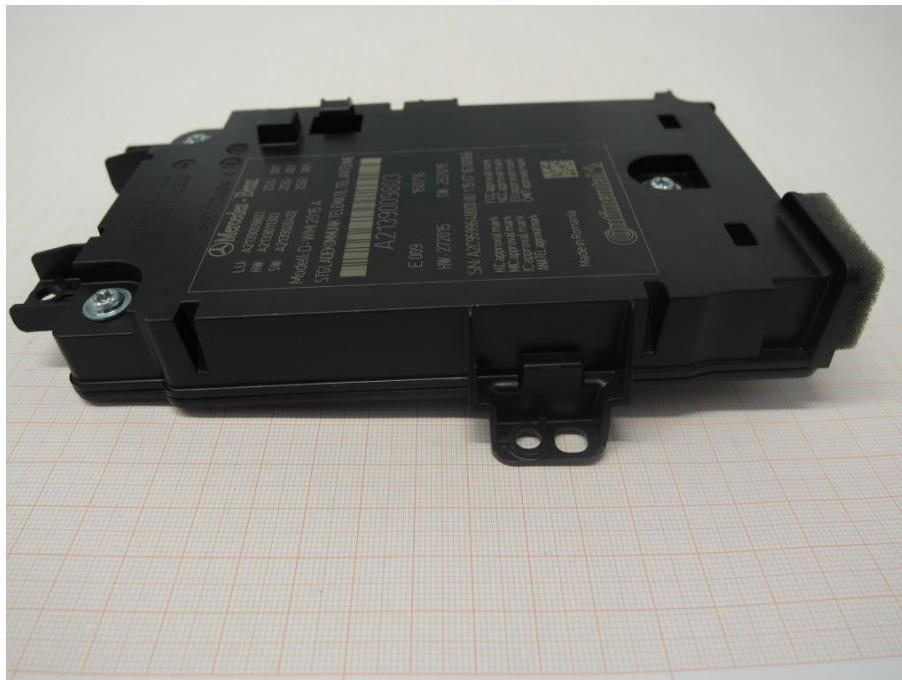


Photo 6 (EUT side view):



Photo 7 (external antenna front view):

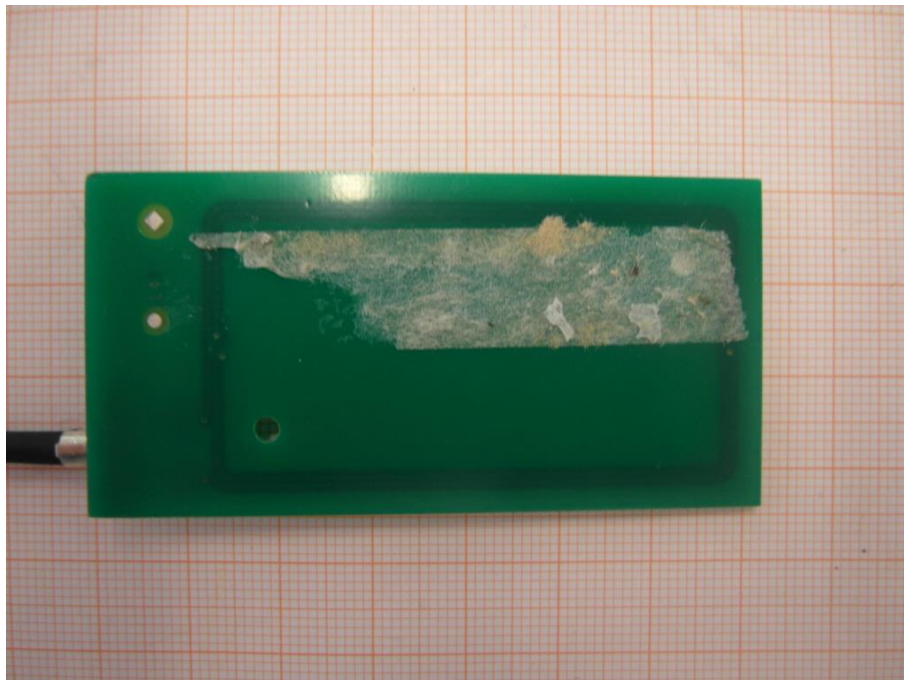


Photo 8 (external antenna rear view):

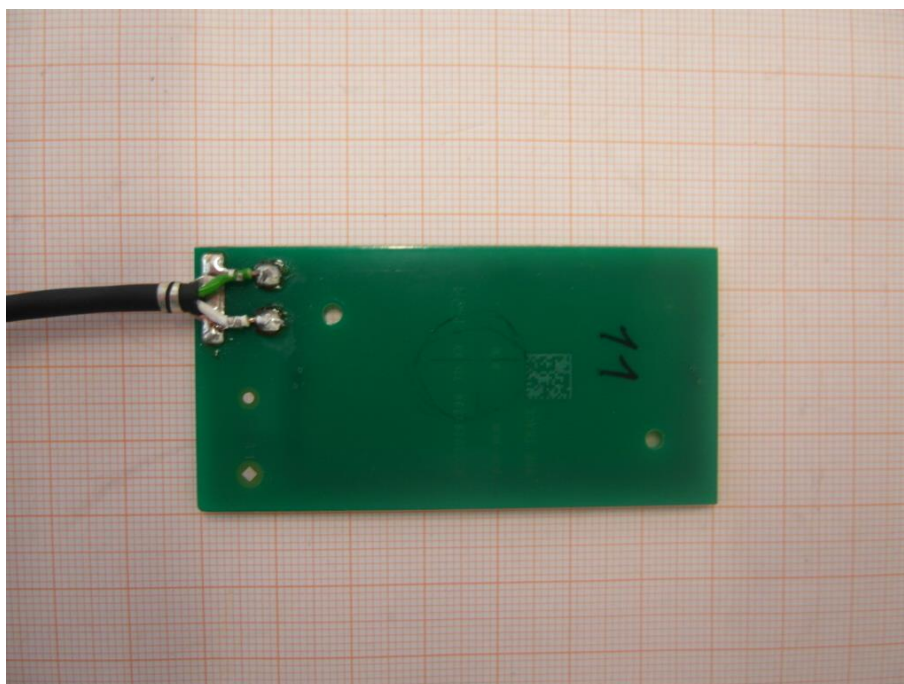
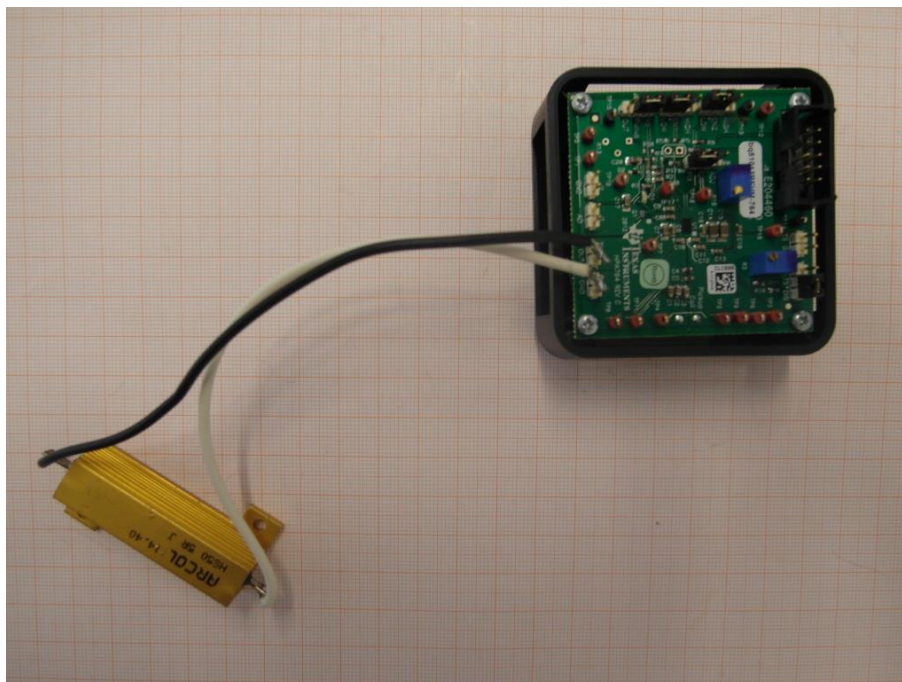


Photo 9 (wireless charging unit):



Document history

Version	Applied changes	Date of release
	Initial release	2015-10-19