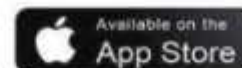


LED WHIP App Guide

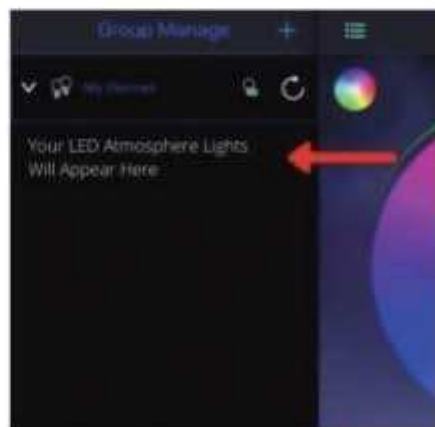
01 Download "Magic-Lantern" from the App Store or Google Play Store.



02 Open the app and click "ok". If you accidentally click "don't allow", go into your phone's settings and find "Magic-Lantern". Then, allow Bluetooth through your phone's settings. This is essential to connect your phone to your lights.



03 Turn on your phone's Bluetooth. Then, plug in and turn on your LED Atmosphere Lights. After, click the icon in the top left corner of the app. You should see your lights appear under "my devices" (this may take up to 3 minutes). Click on your lights to finish pairing them with your app.



Music Mode

Currently music mode is only available for songs that have been downloaded onto your phone. Apple Music, Spotify, and other streaming services generally do not download songs to your phone. As a solution, you can use the "Mic" mode so that your lights automatically adjust to the sound of music.

To use mic mode, click "mic" in the bottom right of the screen. Then, click "OK" to allow the app to access your phone's mic.

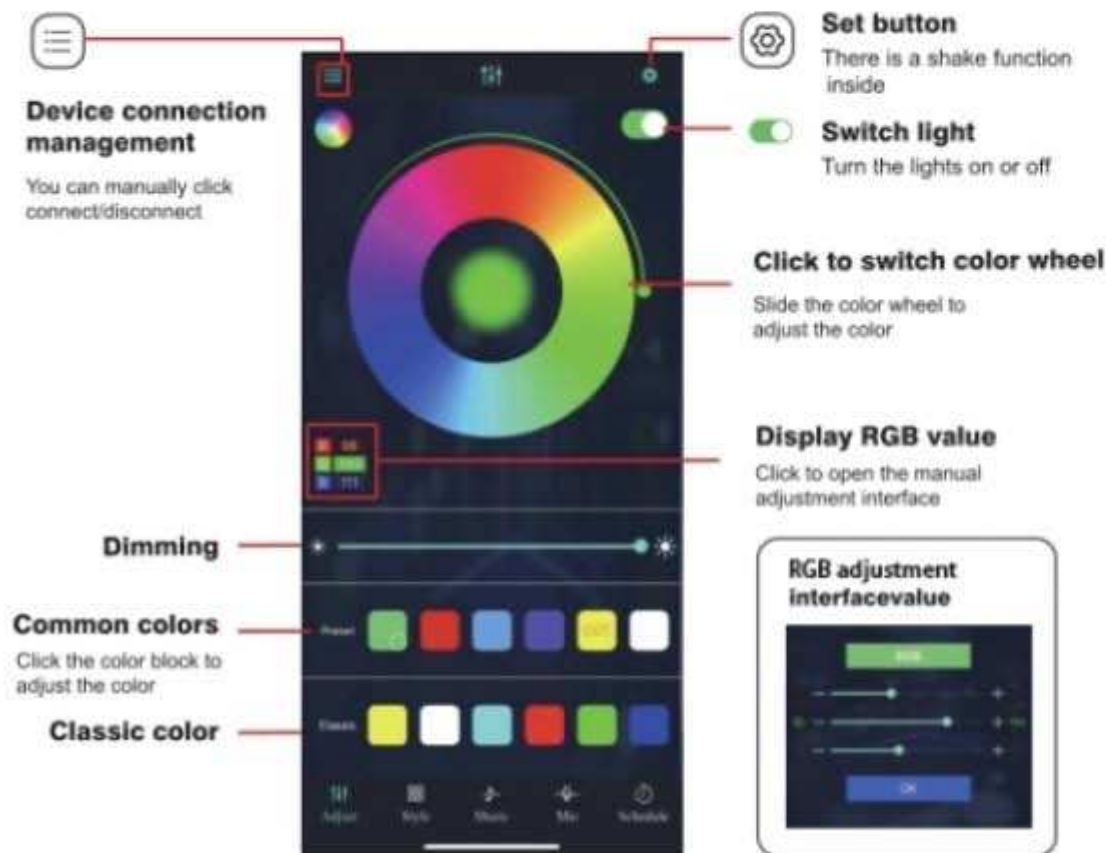


Music dancing lights pattern can be triggered by your phone's mic or external mic of the products. Set the sensitivity to adjust the External MIC to sense the external sound of frequency and intensity. Lights will sync with the sound's frequency and intensity.



LED WHIP CONTROLLED BY LOTUSLANTERN APP

- Works with APP
- Long-range control convenient and quick
- Brightness control from 1% to 100%
- Seven romantic scene modes are optional
- More Than 16million of Colors
- Multi modes can be controlled by one APP
- DIY selection by APP controller to create your great led mood light



RF Remote controller



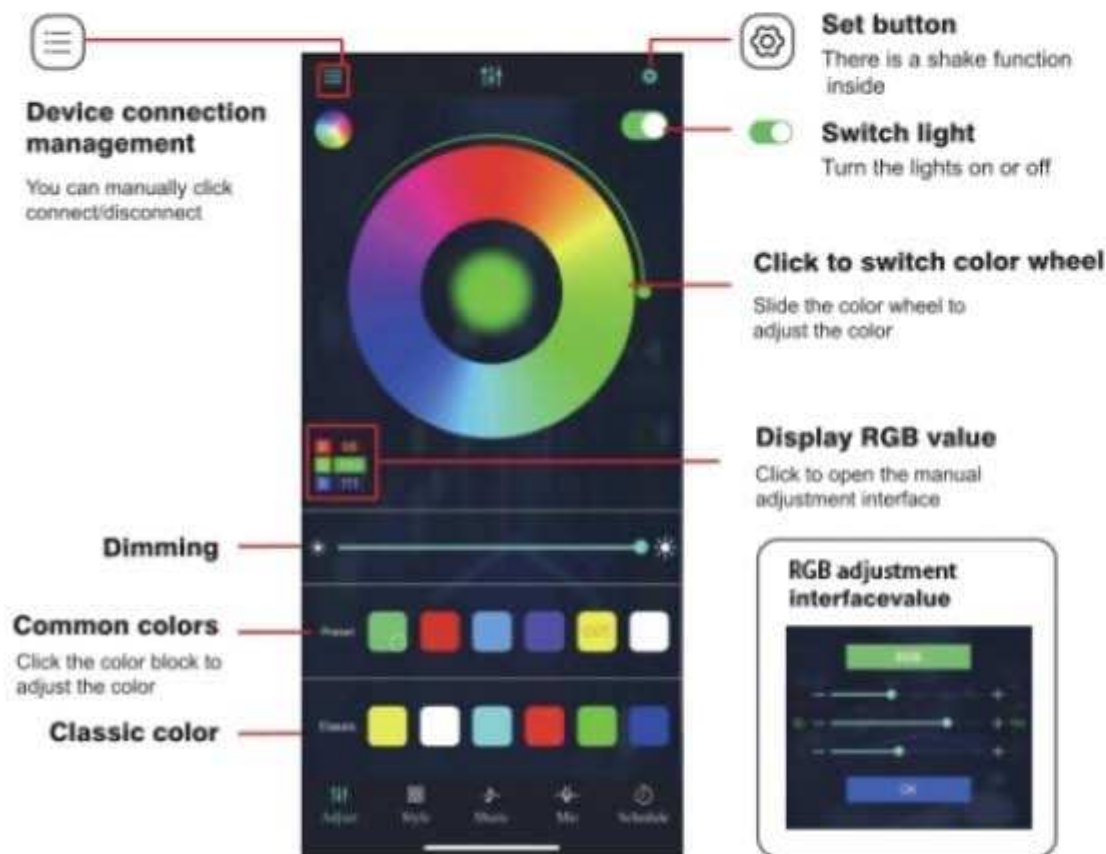
◇One-to-one Remote Control Setting

Long press the ON button about 2-3 seconds, the whip lights flashes twice, which means the whips lights locked and only control by your controller and not affected by others remote controller

◇The music activation mode can be used only after adjusting the sensitivity of the external microphone in the "Magic Lantern" APP

LED WHIP CONTROLLED BY LOTUSLANTERN APP

- Works with APP
- Long-range control convenient and quick
- Brightness control from 1% to 100%
- Seven romantic scene modes are optional
- More Than 16million of Colors
- Multi modes can be controlled by one APP
- DIY selection by APP controller to create your great led mood light



RF Remote controller



◇One-to-one Remote Control Setting

Long press the ON button about 2-3 seconds, the whip lights flashes twice, which means the whips lights locked and only control by your controller and not affected by others remote controller

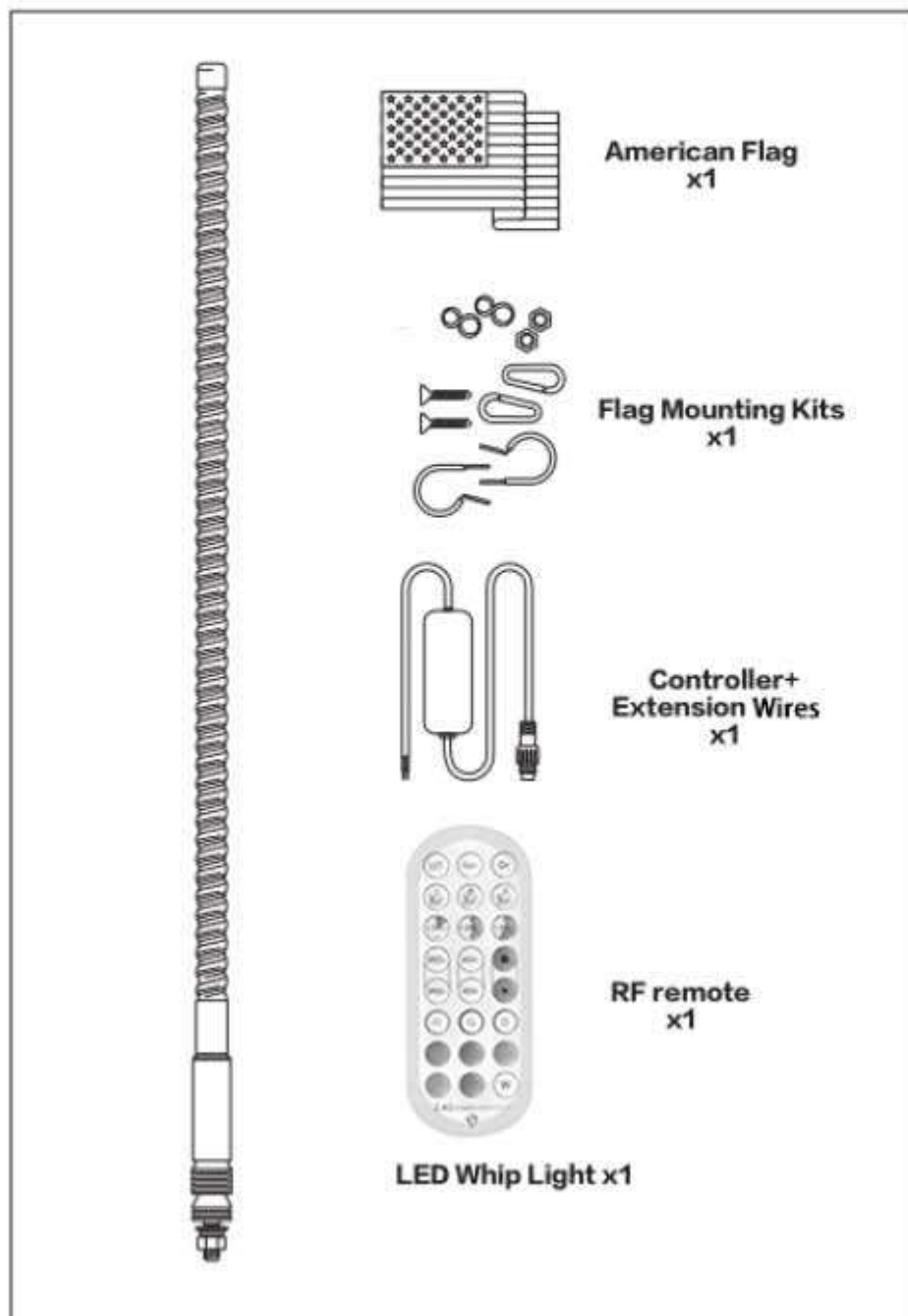
◇The music activation mode can be used only after adjusting the sensitivity of the external microphone in the "Magic Lantern" APP

LED WHIP

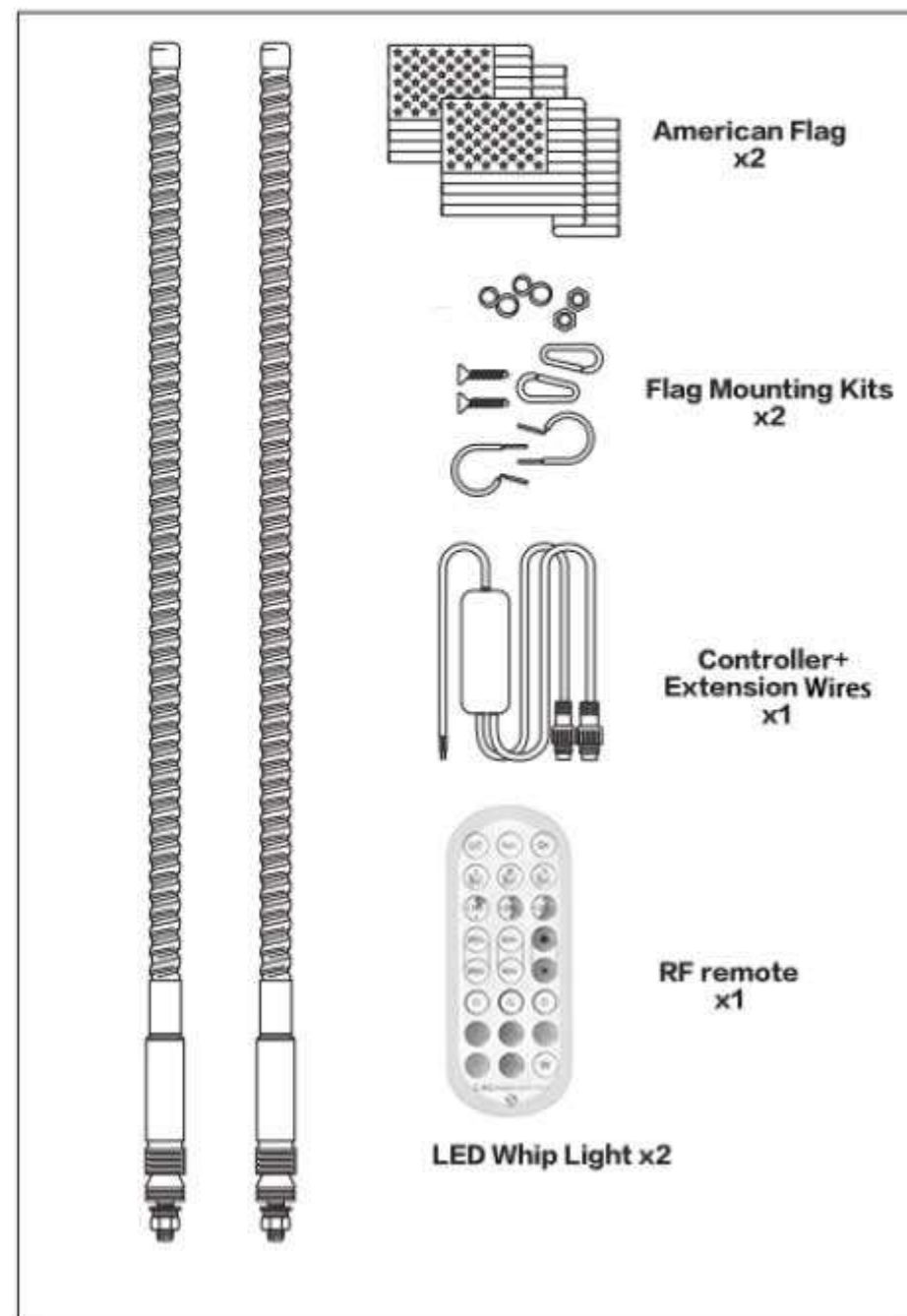
INSTALL AND GUIDE

Includes

Box comes with (single pc)



Box comes with (combo set)



Warning

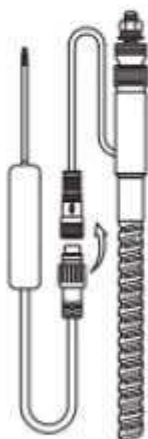
It is recommended that this installation be performed by a licensed professional. The improper installation of this kit will void all warranties.
PLEASE READ THE FOLLOWING INSTRUCTIONS THOROUGHLY BEFORE INSTALLING AND OPERATING THIS LED WHIP

Step 1 Mount Up



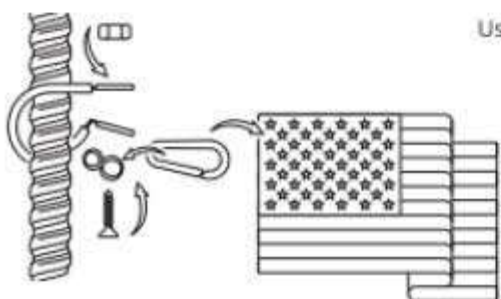
- 1 Remove the bottom nut and the spring washer on the bottom of your quick-release mount
- 2 Mount the LED WHIP into any open 1/2" bolt mount on your vehicle. Make sure the flat washer is in between the whip and the mount
- 3 Place the spring washer underneath the mount and then rescrew the bottom nut
- 4 Have a pair? Go for round 2 and mount the 2nd whip the same way

Step 2 Get wired!



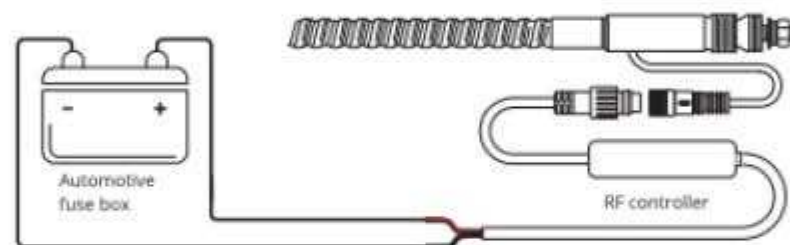
- 1 Grab your battery cord and connect it to the bottom hanging cord on your LED WHIP
- 2 Have a pair? Connect the 3-prong plug coming out the side of the master LED WHIP to the plug coming from the slave LED WHIP.
Note: The slave LED WHIP cannot function without being connected to the master LED WHIP
- 3 Feed the power cord through to your vehicle battery
- 4 Connect the terminal wire to the Positive(+) and Negative(-) terminals of your vehicle battery
- 5 Hide any extra wiring with zip ties

Step 3

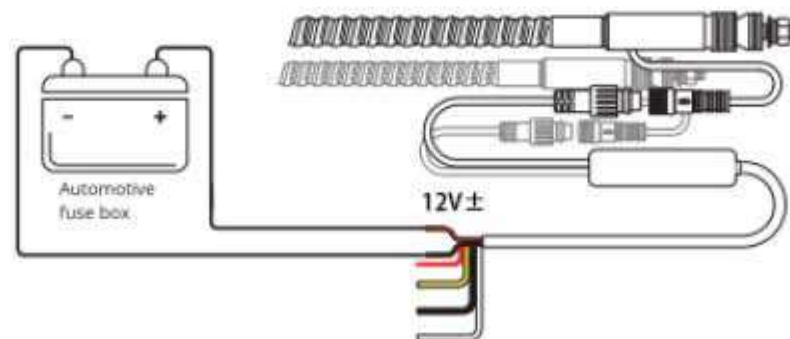


Using the flag mounts to secure flag to the whip

SPEC A One PC LED Whip



SPEC B One Pair LED Whips



This device complies with part 15 of the FCC Rules. Operation is subject to the following two conditions: (1) This device may not cause harmful interference, and (2) this device must accept any interference received, including interference that may cause undesired operation.

Any Changes or modifications not expressly approved by the party responsible for compliance could void the user's authority to operate the equipment.

Note: This equipment has been tested and found to comply with the limits for a Class B digital device, pursuant to part 15 of the FCC Rules. These limits are designed to provide reasonable protection against harmful interference in a residential installation. This equipment generates uses and can radiate radio frequency energy and, if not installed and used in accordance with the instructions, may cause harmful interference to radio communications. However, there is no guarantee that interference will not occur in a particular installation. If this equipment does cause harmful interference to radio or television reception, which can be determined by turning the equipment off and on, the user is encouraged to try to correct the interference by one or more of the following measures:

- Reorient or relocate the receiving antenna.
- Increase the separation between the equipment and receiver.
- Connect the equipment into an outlet on a circuit different from that to which the receiver is connected.
- Consult the dealer or an experienced radio/TV technician for help.