

# 产品规格承认书

## SPECIFICATIONS

客户:  
CUSTOMER: \_\_\_\_\_  
产品名称:  
DESCRIPTION: \_\_\_\_\_ chip antenna  
客户型号:  
CUSTOMER PART NO: \_\_\_\_\_

产品型号:  
OUR MODEL NO: \_\_\_\_\_ PBX2012MA04  
日期:  
DATE: \_\_\_\_\_

确认签字, 盖章后请返回承认书一份  
PLEASE RETURN TO US ONE COPY OF “SPECIFICATION FOR  
APPROVAL” WITH YOUR APPROVED SIGNATURES

approval		to examine		make	
----------	--	---------------	--	------	--

客户确认签章 (APPROVED SIGNATURE)			

# PBX2012MA04 Specification

Operating Temp. : -40°C~+85°C

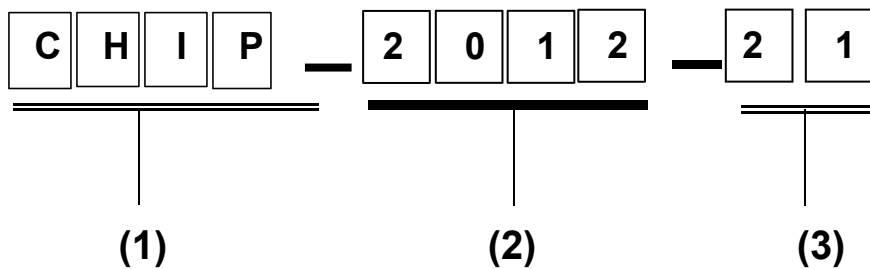
## 1. FEATURES:

- Light weight, compact
- Wide bandwidth, low cost
- Built-in antenna with high gain

## 2. APPLICATIONS:

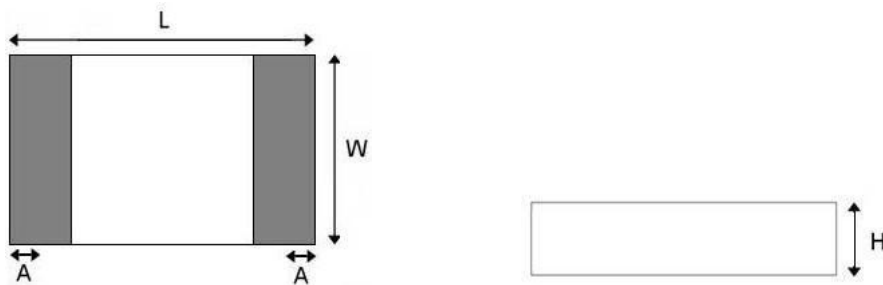
- Bluetooth, Wireless LAN, Mobile TV
- Home RF System, etc

## 3. PRODUCT IDENTIFICATION



- (1) Product type: Multilayer chip Antenna  
(2) External Dimensions (L×W) (mm): 2.0\*1.2

## 4. SHAPE AND DIMENSIONS:



### SHAPE AND DIMENSIONS

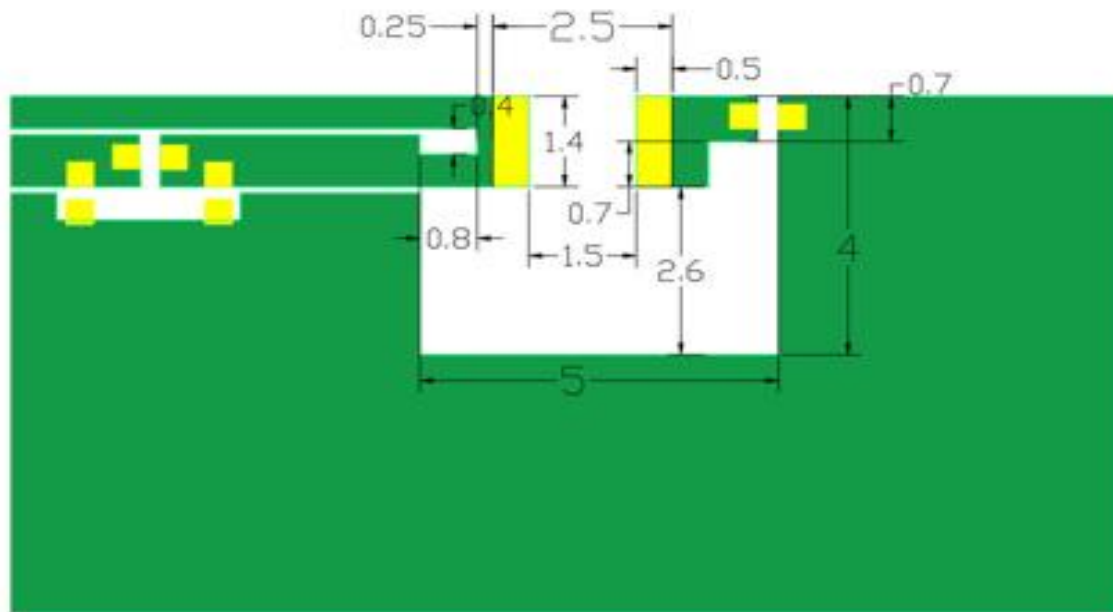
L	W	H	A
2.0±0.2	1.2±0.2	0.55±0.1	0.4±0.1

UNLESS OTHER SPECIFIED TOLERANCES ON: <b>X=±</b> <b>X.X=±</b> <b>X.XX=</b> <b>ANGLES=±</b> <b>HOLE DIA=±</b>		Compan: Shenzhen Pengban Xingye Technology Co., Ltd Add.: 605, Building 4, 1970 Science and Technology Park, Minzhi Community, Minzhi Street, Longhua District, Shenzhen	
SCALE: N/A	UNIT: mm	THIS DRAWINGS AND SPECIFICATIONS ARE THE PROPERTY OF PBXY TECHNOLOGY Limited AND SHALL NOT BE REPRODUCED OR USED AS THE BASIS FOR THE MANUFACTURE OR SALE OF APPARATUS OR DEVICES WITHOUT PERMISSION	
DRAWN BY : Sera	CHECKED BY: XD		
DESIGNED BY: Sera	APPROVED BY: XD		
TITLE: CHIP2450-21 Specification		DOCUMENT NO.	SPEC REV.
		2012	P1

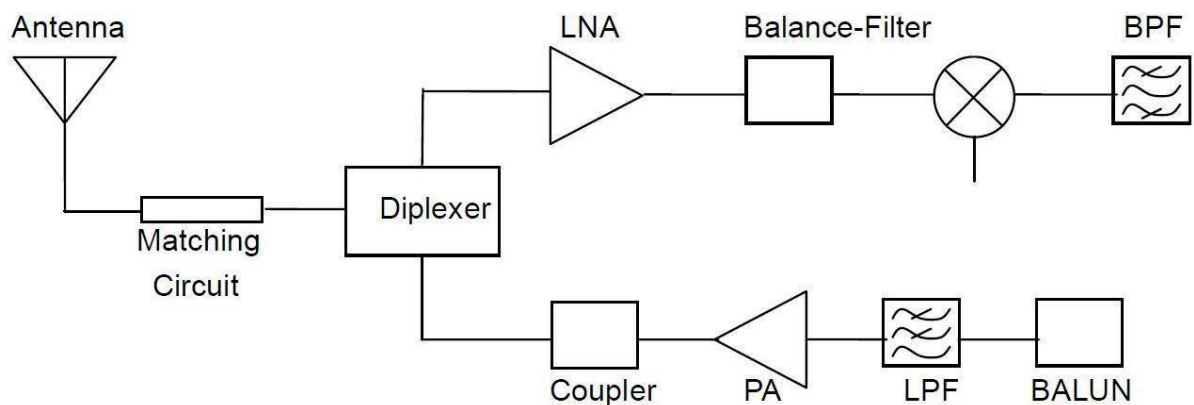
## TERMINAL-CONFIGURATION



## EVALUATION BOARD



## APPLICATION GUIDE



UNLESS OTHER SPECIFIED TOLERANCES ON: <b>X=±</b> <b>X.X=±</b> <b>X.XX=</b> <b>ANGLES=±</b> <b>HOLEDIA=±</b>		Compan: Shenzhen Pengban Xingye Technology Co., Ltd Add.: 605, Building 4, 1970 Science and Technology Park, Minzhi Community, Minzhi Street, Longhua District, Shenzhen	
SCALE: N/A	UNIT: mm	THIS DRAWINGS AND SPECIFICATIONS ARE THE PROPERTY OF PBXY TECHNOLOGY Limited AND SHALL NOT BE REPRODUCED OR USED AS THE BASIS FOR THE MANUFACTURE OR SALE OF APPARATUS OR DEVICES WITHOUT PERMISSION	
DRAWN BY : Sera	CHECKED BY: XD		
DESIGNED BY: Sera	APPROVED BY: XD		
TITLE: CHIP2450-21 Specification		DOCUMENT NO.	2012
			SPEC REV. P1

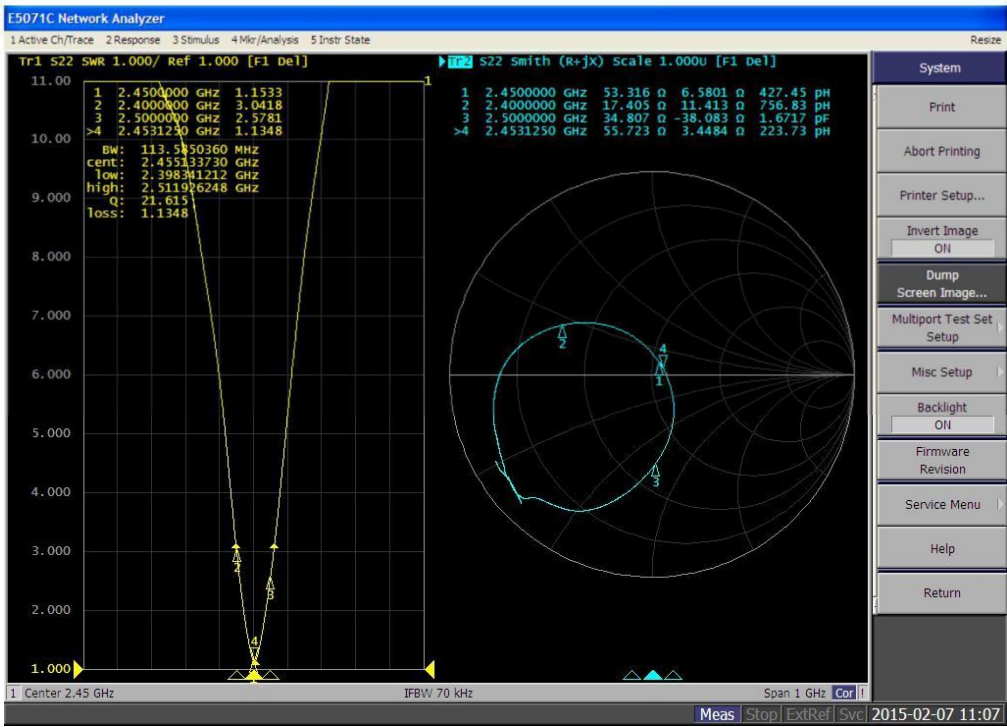
5. SPECIFICATIONS:

ITEM	SPECIFICATION
Frequency Band	2400MHz~2483MHz
VSWR	Less than 3
Polarization	Linear
*Peak Gain	2.48 dBi Typ.
*Peak Efficiency	72.6% Typ.
Impedance	50 Ω Typ.

\* Test condition: Test board size 98\*65 mm  
Matching circuit: Pi matching circuit will be required

6. Electrical Characteristics :

VSWR



Mark	Frequency	VSWR
1	2400 MHz	3.04
2	2450 MHz	1.15
3	2500 MHz	2.57

UNLESS OTHER SPECIFIED TOLERANCES ON:

X=±      X.X=±      X.XX=±  
ANGLES=±      HOLEDIA=±

SCALE: N/A

UNIT: mm

DRAWN BY : Sera

CHECKED BY: XD

DESIGNED BY: Sera

APPROVED BY: XD

Compan: Shenzhen Pengban Xingye Technology Co., Ltd  
Add.: 605, Building 4, 1970 Science and Technology Park,  
Minzhi Community, Minzhi Street, Longhua District, Shenzhen

THIS DRAWINGS AND SPECIFICATIONS ARE THE PROPERTY OF PBXY  
TECHNOLOGY Limited AND SHALL NOT BE REPRODUCED OR USED AS  
THE BASIS FOR THE MANUFACTURE OR SALE OF APPARATUS OR  
DEVICES WITHOUT PERMISSION

TITLE: CHIP2450-21 Specification

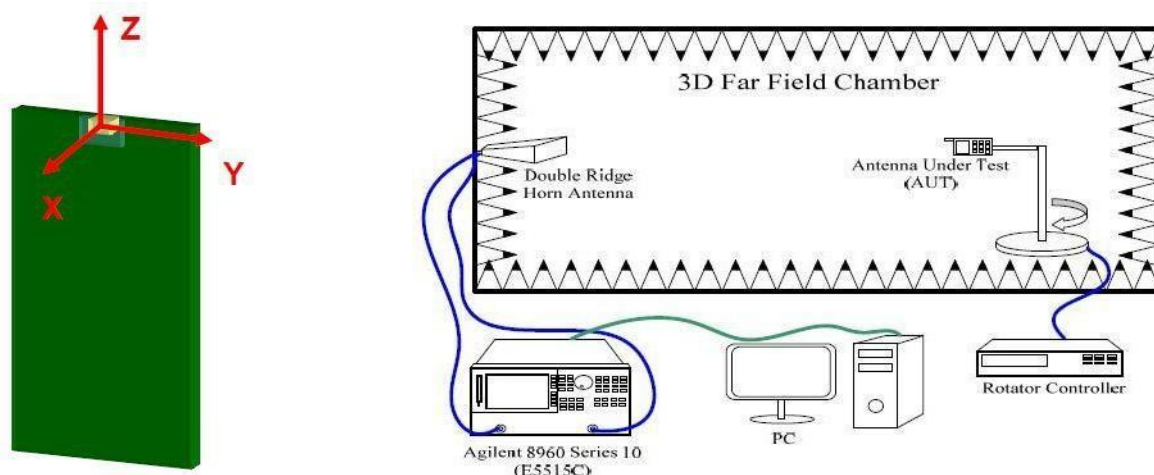
DOCUMENT  
NO.

2012

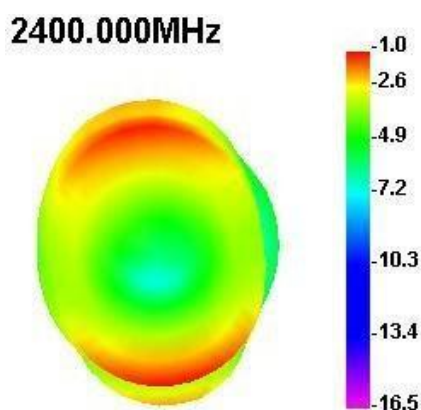
SPEC REV.  
P1

## Radiation Pattern

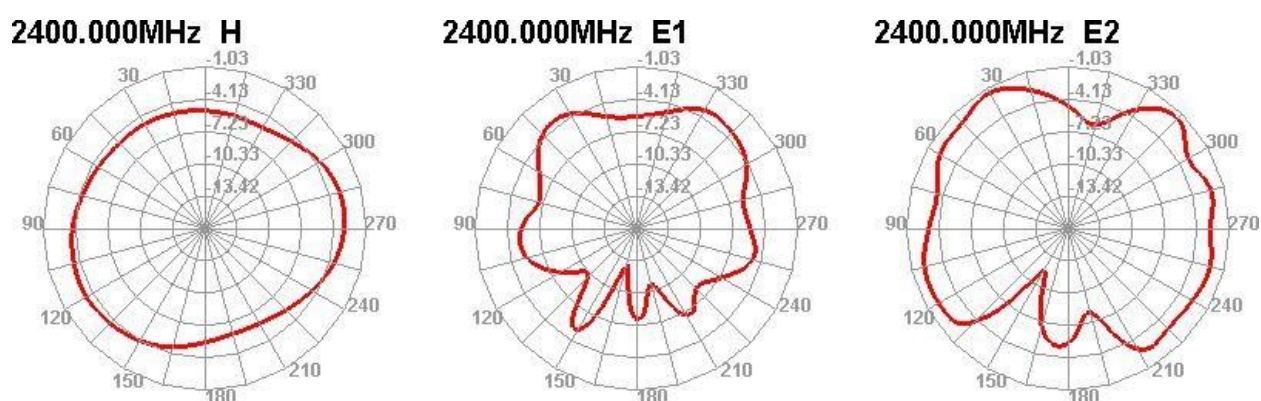
The Gain pattern is measured in INPAQ's FAR-field chamber. DUT is placed on the table of rotator,a standard horn antenna and Vector Network Analyzer is used to collect data.



### © 3D Gain Pattern (2400 MHz)



### © 2D Gain Pattern (2400 MHz)



UNLESS OTHER SPECIFIED TOLERANCES ON: <b>X=±      X.X=±      X.XX=</b> <b>ANGLES=±      HOLEDIA=±</b>		Compan: Shenzhen Pengban Xingye Technology Co., Ltd Add.: 605, Building 4, 1970 Science and Technology Park, Minzhi Community, Minzhi Street, Longhua District, Shenzhen	
SCALE: N/A	UNIT: mm	THIS DRAWINGS AND SPECIFICATIONS ARE THE PROPERTY OF PBXY TECHNOLOGY Limited AND SHALL NOT BE REPRODUCED OR USED AS THE BASIS FOR THE MANUFACTURE OR SALE OF APPARATUS OR DEVICES WITHOUT PERMISSION	
DRAWN BY : Sera	CHECKED BY: XD		
DESIGNED BY: Sera	APPROVED BY: XD		
TITLE: CHIP2450-21 Specification		DOCUMENT NO.	SPEC REV.
		2012	P1