

# Antenna Sample Datasheet

customer:	Raytheon
entry name:	BTE-680
Material category:	BT antenna
edition:	A17
Date:	2024. 4. 29

# Directory

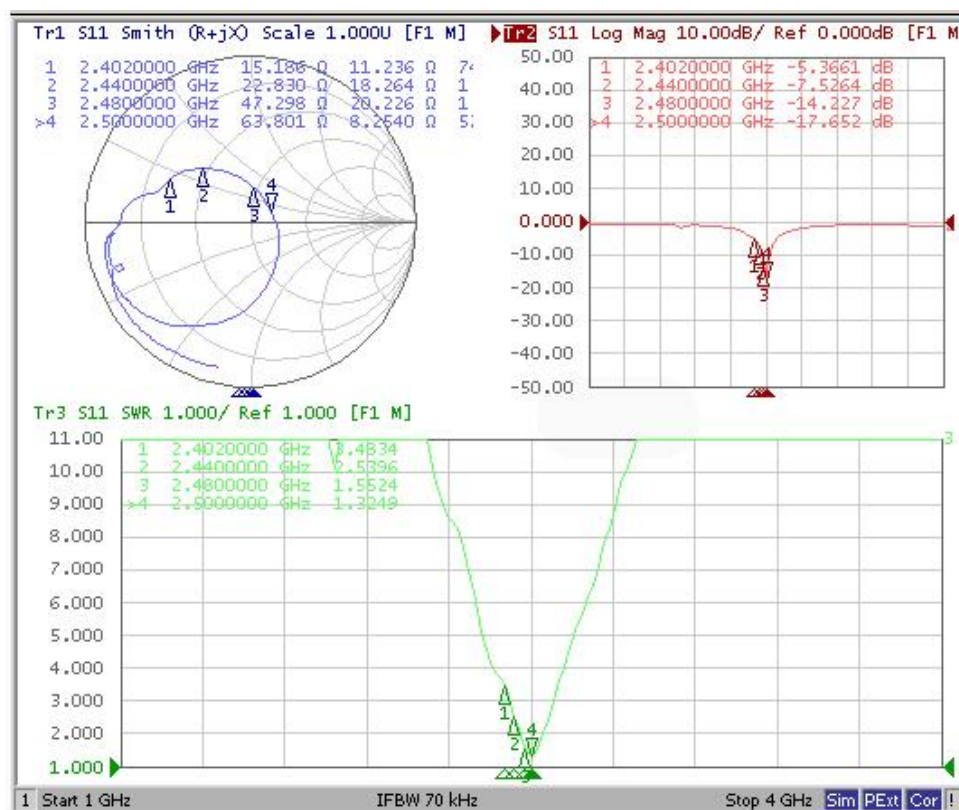
1: Antenna Passive Test Report.....	3
2: Structural drawings.....	5

# 1: Passive test report

## network analyzer(5071B)



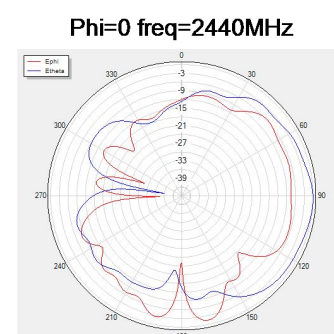
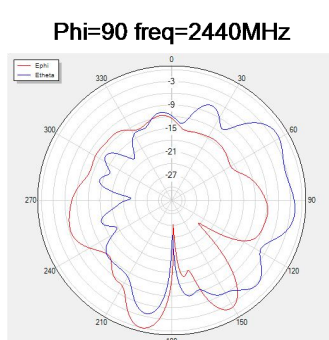
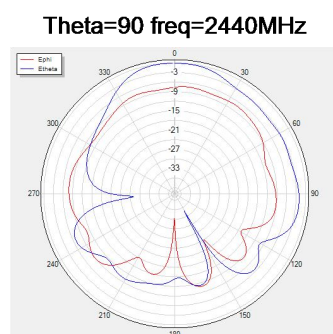
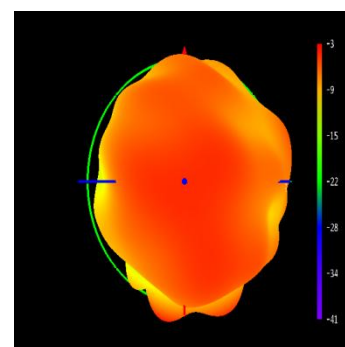
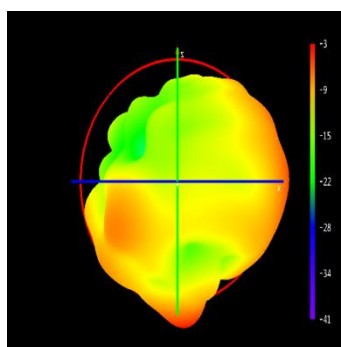
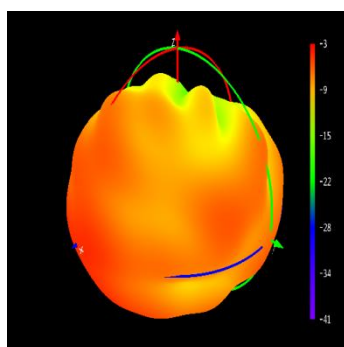
## BT antenna S11 parameters



## Passive efficiency of antenna for L&R

2400-2480MHz				
Freq(MHz)	Gain(dBi)	Efficiency(%)	Gain(dBi)	Efficiency(%)
	free space	free space	Second generation head mold	Second generation head mold
2400	-2.48	16.93	-4.63	10.49
2410	-2.47	17.6	-4.48	10.75
2420	-2.39	18.48	-4.3	11.01
2430	-2.35	19.67	-4.2	11.39
2440	-2.27	21.27	-4.21	11.85
2450	-2.25	22.88	-4.4	12.24
2460	-2.23	24.63	-4.6	12.58
2470	-2.18	26.11	-4.76	12.76
2480	-2.12	26.78	-4.81	12.57

## Passive pattern of BT antenna for L&R



Left

[illegible]

Right

Environmentally friendly RoHS 2.0									
A	B	C	D	E	F	G			
					Version	Date	Change Description		
					A17	2024-1-29	Add touch area on A16 version		

1

23.25±0.15

6.26±0.15

BTE-680-R-A17

HJ

0.14±0.03

(Contains back glue, does not contain release paper)

Vertical view

End view

Bottom view

NOTES:

1.

The green part is made of copper;  Blank is the base material;

2.

The yellow part is the gold-plated area;  Blue is the adhesive area;

3.

The die can not hurt the line, and the gold-plated area should be connected with the line;

4.

The surface should not have dirt, scratches, black spots, breakage and falling off after gold plating;

5.

Material: FPC single panel [PI(ED) a pair of half substrate (0.063mm)+ adhesive (3M 9471 0.05mm)+ The surface is covered with half to half black film];

6.

The back glue is 3M 9471;

7.

Gold finger surface gold-plated (thickness: ≥1μ), no oxidation phenomenon (salt spray test required);

8.

After 48±1 hours of salt spray test, there were no corrosion points on the surface and the coating fell off;

9.

The front screen print is in bright white font. The screen print position and font size are shown in the figure;

10.

Mark \* as the key dimensions, please check according to standard tolerances if not marked;

11.

Meet our ROHS, Reach, halogen-free requirements.

Electrical performance:

1.

Test the continuity of the circuit

2.

conductivity: 35 58m/(Ω • mm2)

Physical and chemical properties:

1.

The golden finger should not have oxidation phenomenon (salt spray test is required)

2.

After 48 ± 1 hour of salt spray test, there are no corrosion points on the surface and the coating is not peeling off.

TOLERANCE TABLE

APPROVED:

MAO LU PING

PRODUCT NAME: FPC

PRODUCT NUMBER: BTE-680-R

CHECKED:

LONG TAO

CUTTING TECHNOLOGY:

HALF CUTTING PROCESS

DRAWING:

YU JIANG BO

VERSION:

A17

PROPORTION:

1:1

PAGE SIZE:

1/1

By Graph zoom

深圳市宇鸿实业有限公司

Shenzhen Yuhong Industrial Co., Ltd