



Conducted Emission Method

Test Result

TestMode	Antenna	Frequency[MHz]	FreqRange [MHz]	RefLevel [dBm]	Result [dBm]	Limit [dBm]	Verdict
DH5	Ant1	2402	0~Reference	2.84	2.84	---	PASS
DH5	Ant1	2402	30~1000	2.84	-57.59	≤ -17.16	PASS
DH5	Ant1	2402	1000~26500	2.84	-42.07	≤ -17.16	PASS
DH5	Ant1	2441	0~Reference	4.50	4.50	---	PASS
DH5	Ant1	2441	30~1000	4.50	-58.03	≤ -15.5	PASS
DH5	Ant1	2441	1000~26500	4.50	-42	≤ -15.5	PASS
DH5	Ant1	2480	0~Reference	5.66	5.66	---	PASS
DH5	Ant1	2480	30~1000	5.66	-57.47	≤ -14.34	PASS
DH5	Ant1	2480	1000~26500	5.66	-41.92	≤ -14.34	PASS
2DH5	Ant1	2402	0~Reference	0.11	0.11	---	PASS
2DH5	Ant1	2402	30~1000	0.11	-57.49	≤ -19.89	PASS
2DH5	Ant1	2402	1000~26500	0.11	-41.53	≤ -19.89	PASS
2DH5	Ant1	2441	0~Reference	4.26	4.26	---	PASS
2DH5	Ant1	2441	30~1000	4.26	-57.77	≤ -15.74	PASS
2DH5	Ant1	2441	1000~26500	4.26	-42.78	≤ -15.74	PASS
2DH5	Ant1	2480	0~Reference	5.57	5.57	---	PASS
2DH5	Ant1	2480	30~1000	5.57	-57.85	≤ -14.43	PASS
2DH5	Ant1	2480	1000~26500	5.57	-41.58	≤ -14.43	PASS
3DH5	Ant1	2402	0~Reference	-0.71	-0.71	---	PASS
3DH5	Ant1	2402	30~1000	-0.71	-57.42	≤ -20.71	PASS
3DH5	Ant1	2402	1000~26500	-0.71	-42.58	≤ -20.71	PASS
3DH5	Ant1	2441	0~Reference	2.22	2.22	---	PASS
3DH5	Ant1	2441	30~1000	2.22	-57.86	≤ -17.78	PASS
3DH5	Ant1	2441	1000~26500	2.22	-42.08	≤ -17.78	PASS
3DH5	Ant1	2480	0~Reference	5.82	5.82	---	PASS
3DH5	Ant1	2480	30~1000	5.82	-57.66	≤ -14.18	PASS
3DH5	Ant1	2480	1000~26500	5.82	-31.85	≤ -14.18	PASS



Test Graphs:

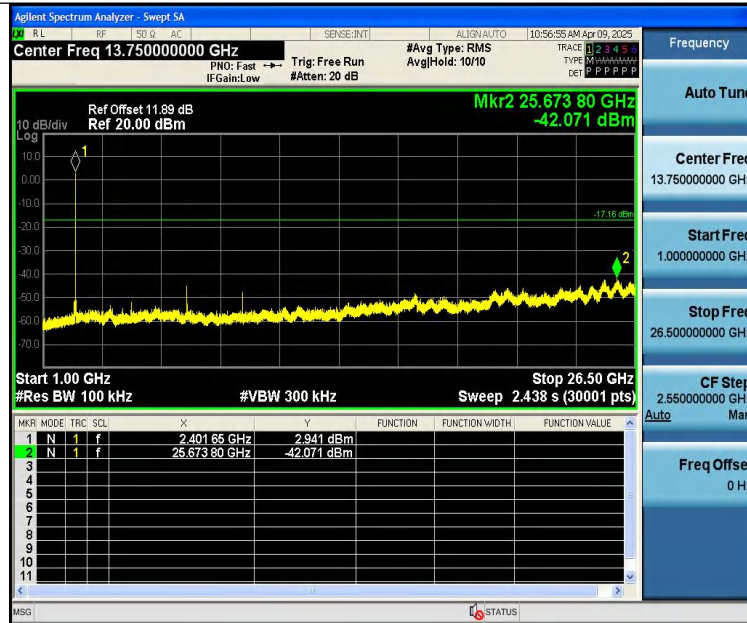
DH5-Ant1-2402-0~Reference-PASS



DH5-Ant1-2402-30~1000-PASS



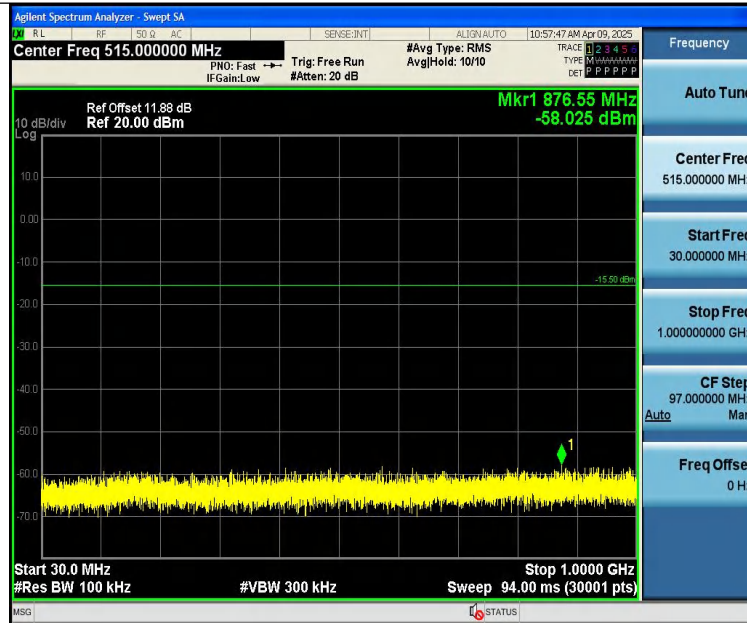
DH5-Ant1-2402-1000~26500-PASS



DH5-Ant1-2441-0~Reference-PASS



DH5-Ant1-2441-30~1000-PASS



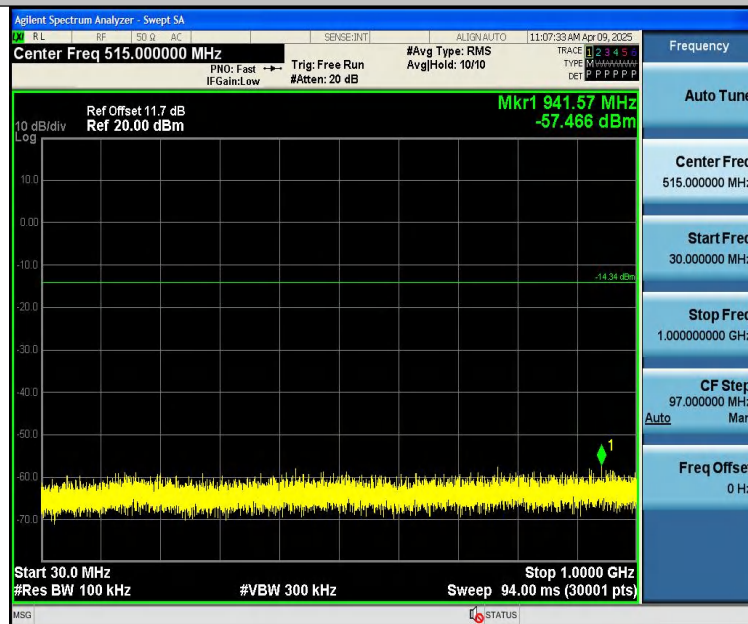
DH5-Ant1-2441-1000~26500-PASS



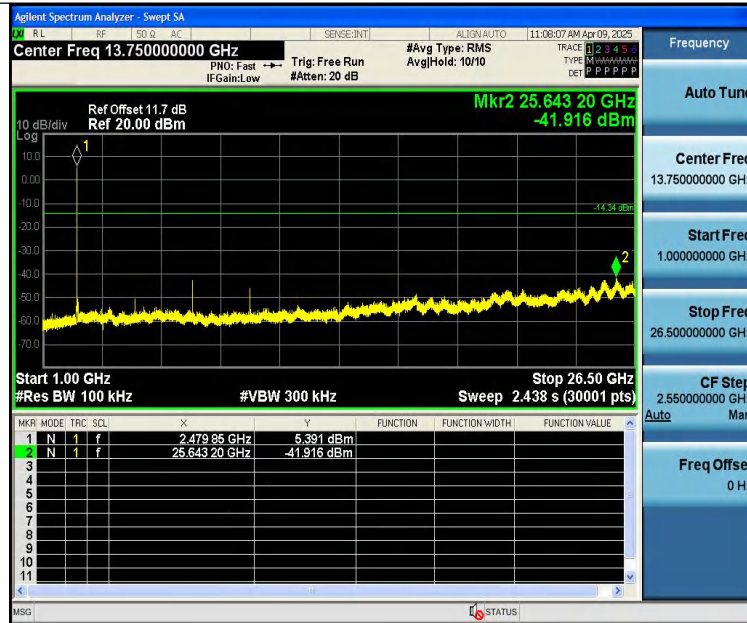
DH5-Ant1-2480-0~Reference-PASS



DH5-Ant1-2480-30~1000-PASS



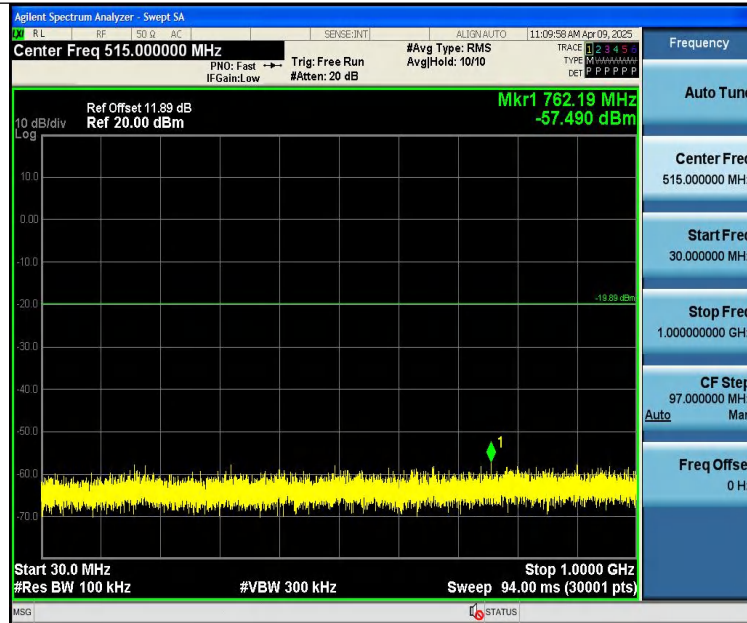
DH5-Ant1-2480-1000~26500-PASS



2DH5-Ant1-2402-0~Reference-PASS



2DH5-Ant1-2402-30~1000-PASS



2DH5-Ant1-2402-1000~26500-PASS



2DH5-Ant1-2441-0~Reference-PASS



2DH5-Ant1-2441-30~1000-PASS



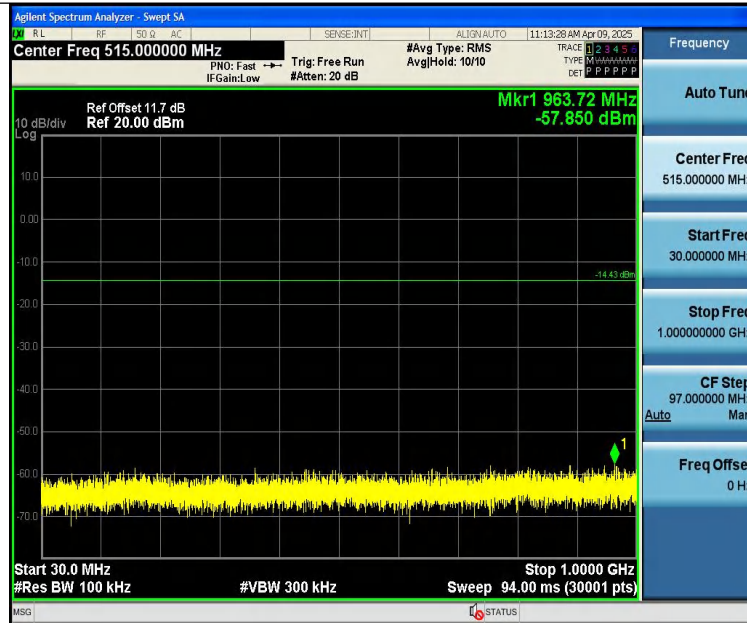
2DH5-Ant1-2441-1000~26500-PASS



2DH5-Ant1-2480-0~Reference-PASS



2DH5-Ant1-2480-30~1000-PASS



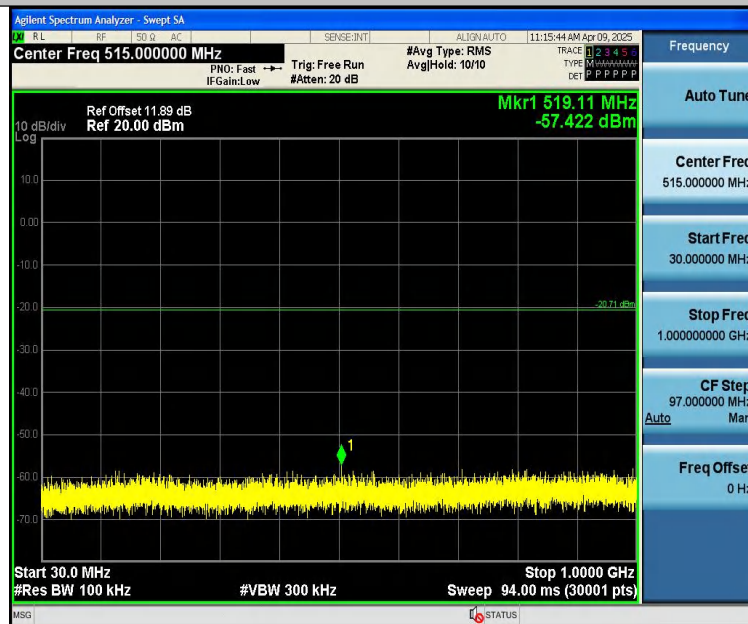
2DH5-Ant1-2480-1000~26500-PASS



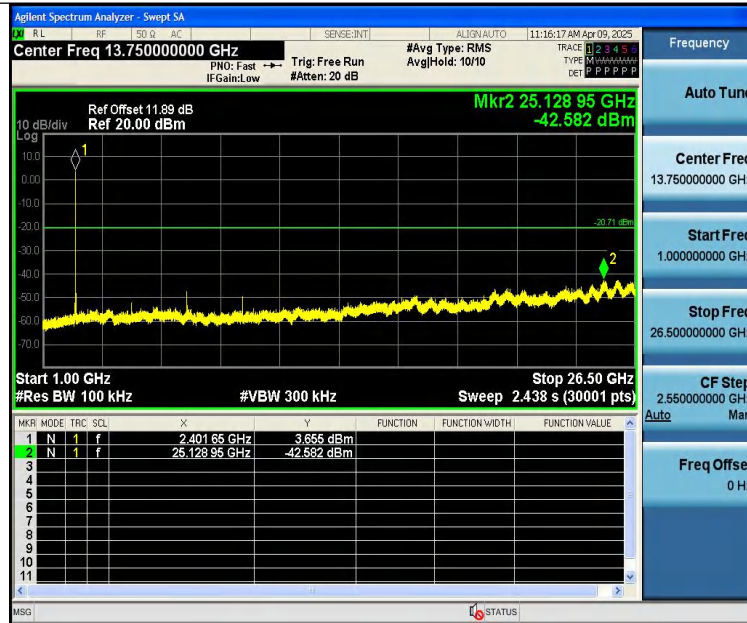
3DH5-Ant1-2402-0~Reference-PASS



3DH5-Ant1-2402-30~1000-PASS



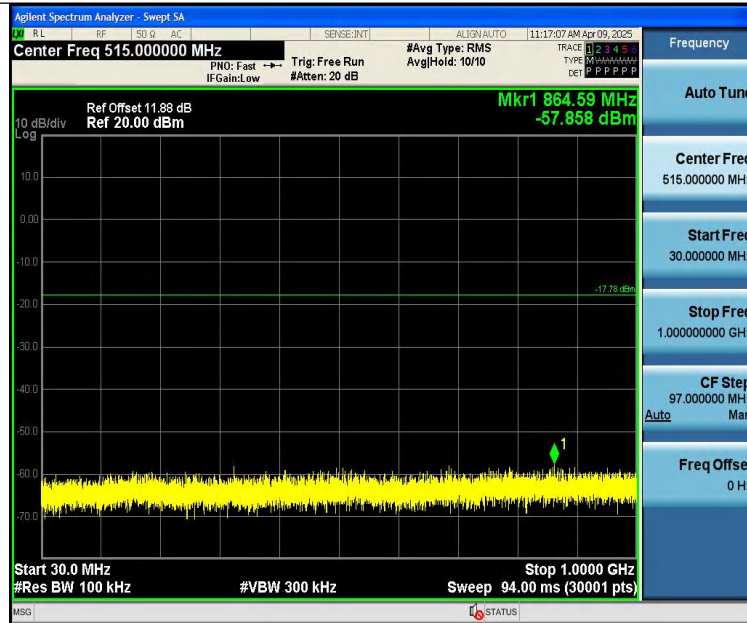
3DH5-Ant1-2402-1000~26500-PASS



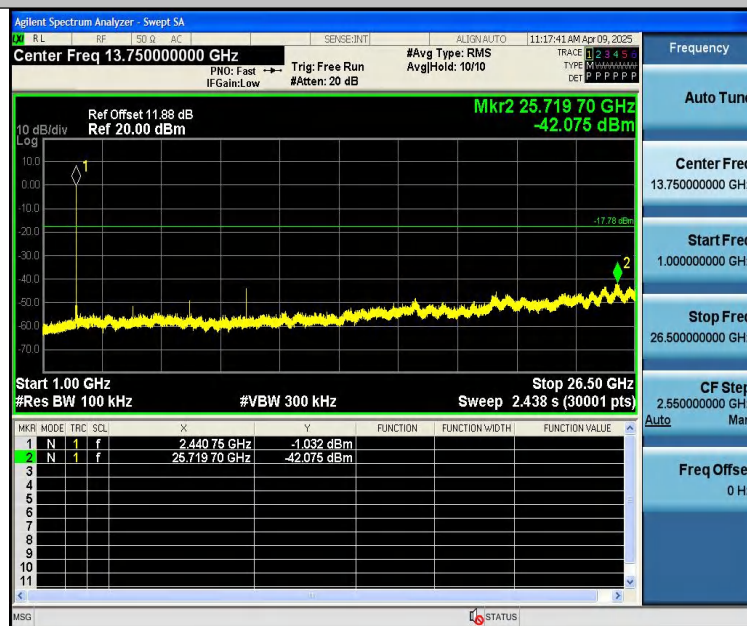
3DH5-Ant1-2441-0~Reference-PASS



3DH5-Ant1-2441-30~1000-PASS



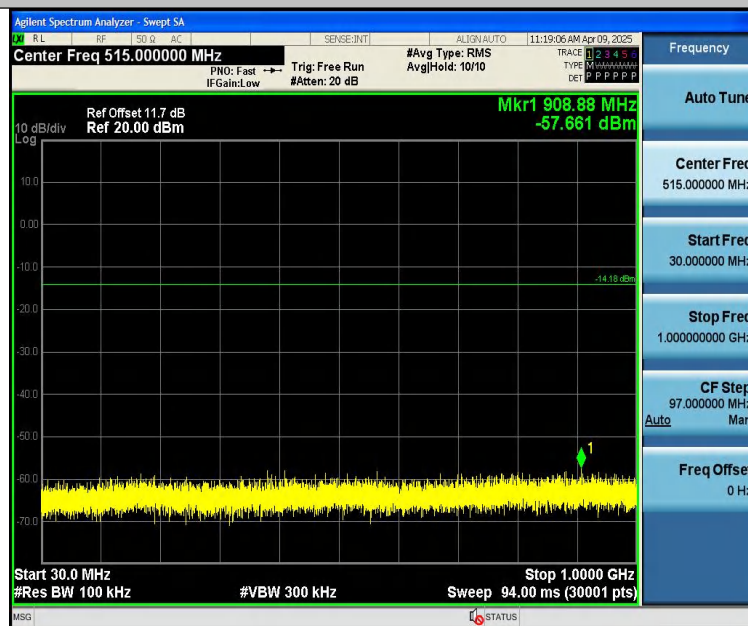
3DH5-Ant1-2441-1000~26500-PASS



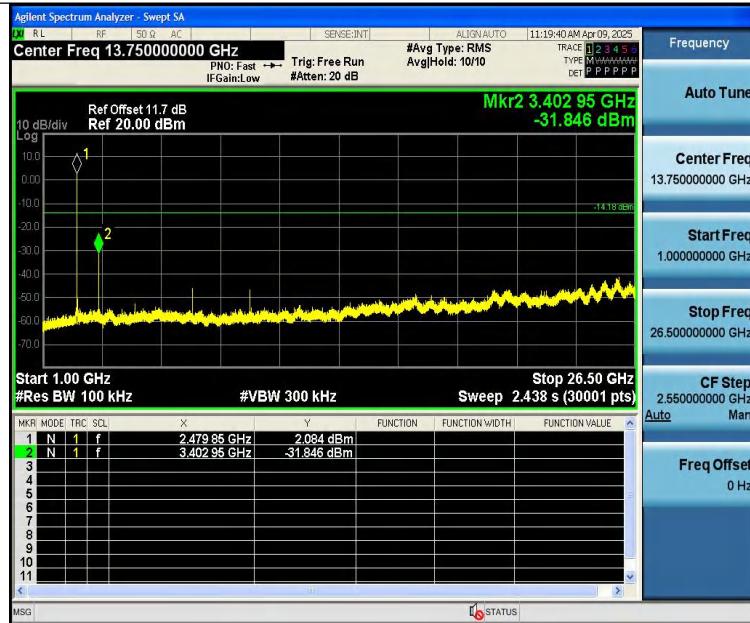
3DH5-Ant1-2480-0~Reference-PASS



3DH5-Ant1-2480-30~1000-PASS



3DH5-Ant1-2480-1000~26500-PASS





14 Antenna Requirement

14.1 Test Standard and Requirement

Test Standard	FCC Part15 Section 15.203 /247(c)
Requirement	<p>1) 15.203 requirement:</p> <p>An intentional radiator shall be designed to ensure that no antenna other than that furnished by the responsible party shall be used with the device. The use of a permanently attached antenna or of an antenna that uses a unique coupling to the intentional radiator, the manufacturer may design the unit so that a broken antenna can be replaced by the user, but the use of a standard antenna jack or electrical connector is prohibited.</p> <p>2) 15.247(c) (1)(i) requirement:</p> <p>Systems operating in the 2400-2483.5 MHz band that is used exclusively for fixed. Point-to-point operations may employ transmitting antennas with directional gain greater than 6dBi provided the maximum conducted output power of the intentional radiator is reduced by 1 dB for every 3 dB that the directional gain of the antenna exceeds 6 dBi.</p>

14.2 Antenna Connected Construction

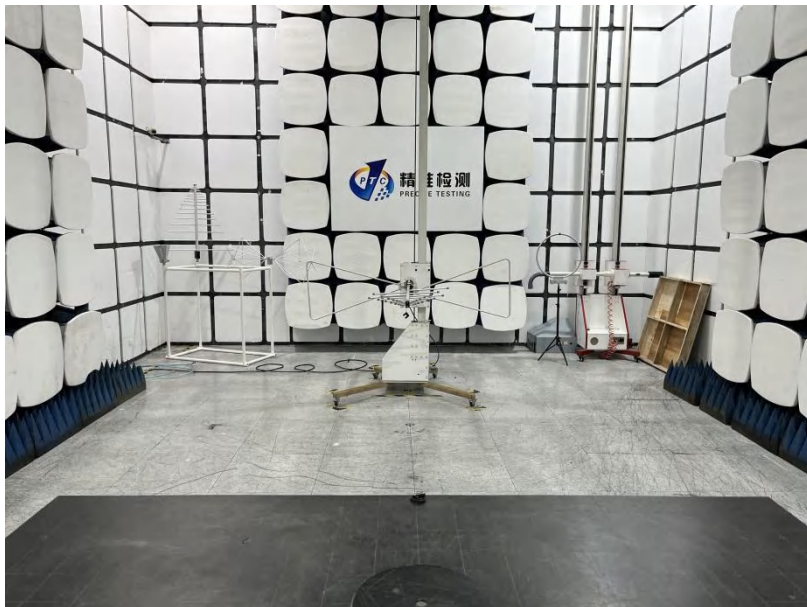
The antenna is Ceramic Antenna which permanently attached, and the best case gain of the antenna is 2.78 dBi. It complies with the standard requirement.

15 APPENDIX I -- TEST SETUP PHOTOGRAPH

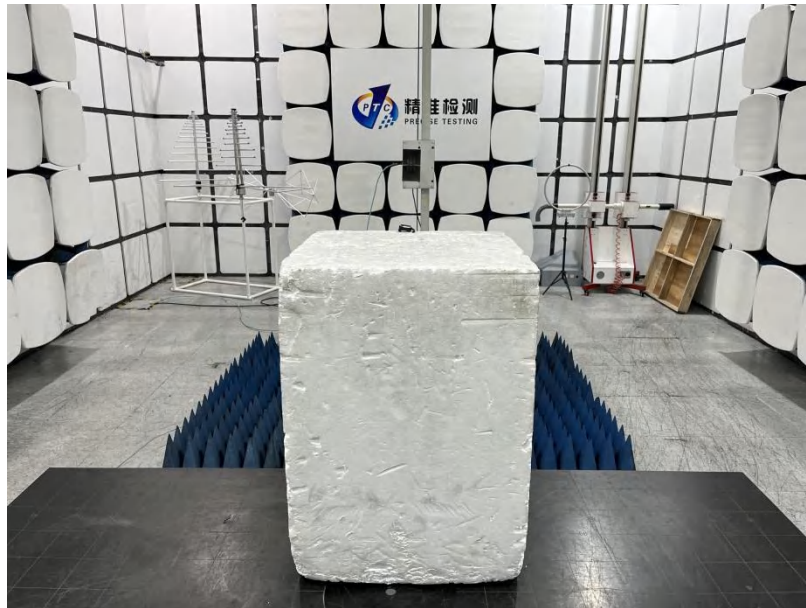
Conducted Emissions



Radiated Emissions From 30M-1GHz



Above 1GHz



16 APPENDIX II -- EUT PHOTOGRAPH



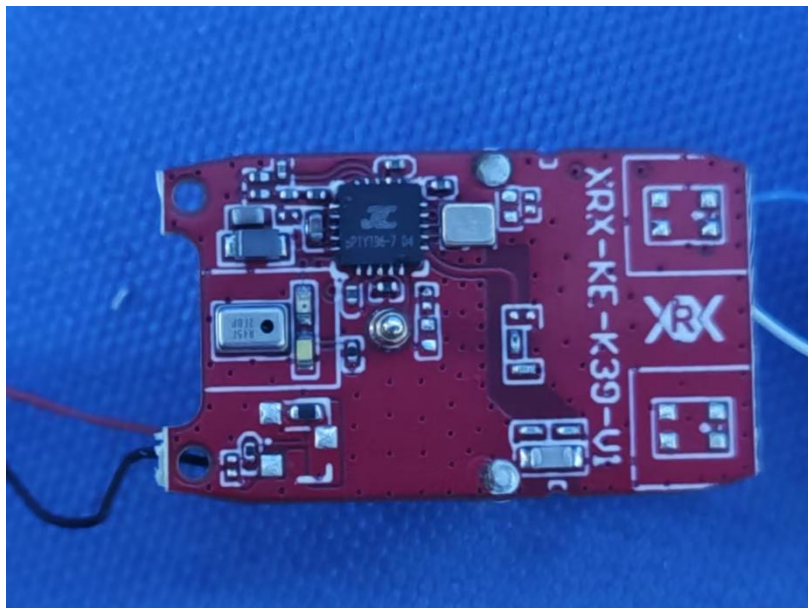


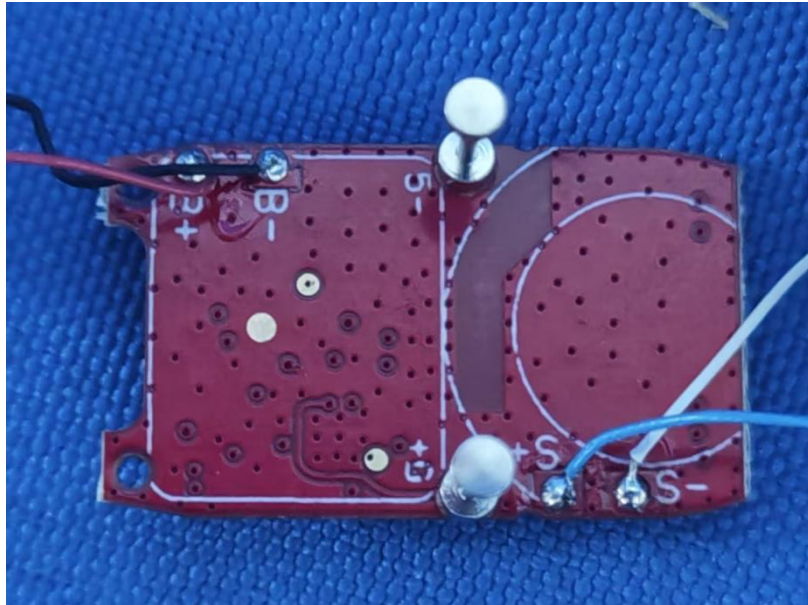
L:

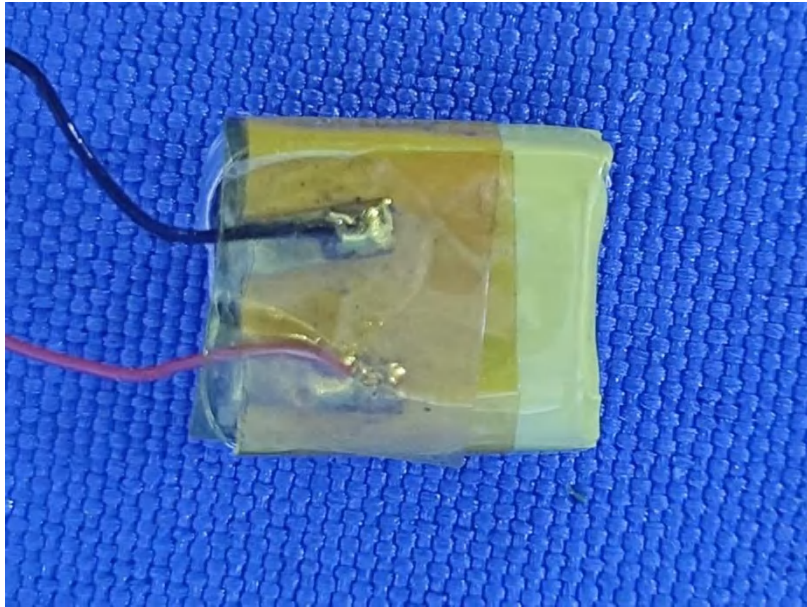












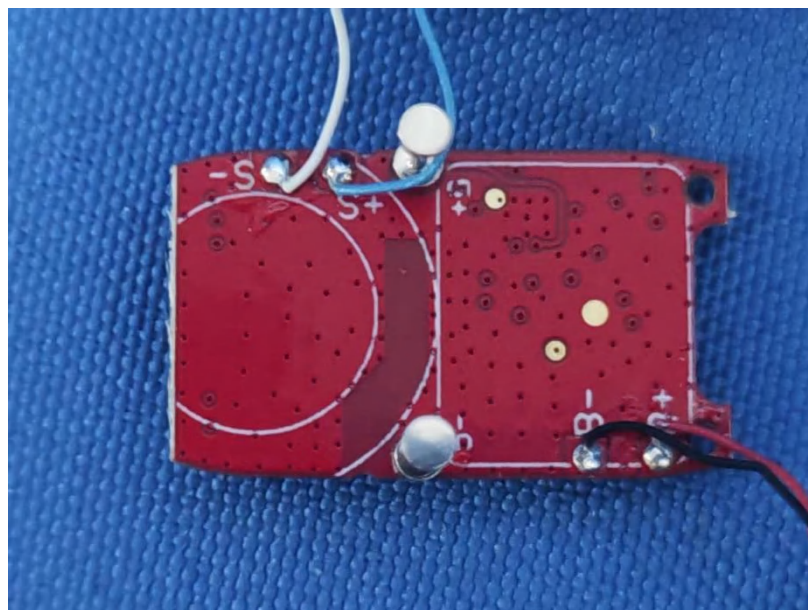
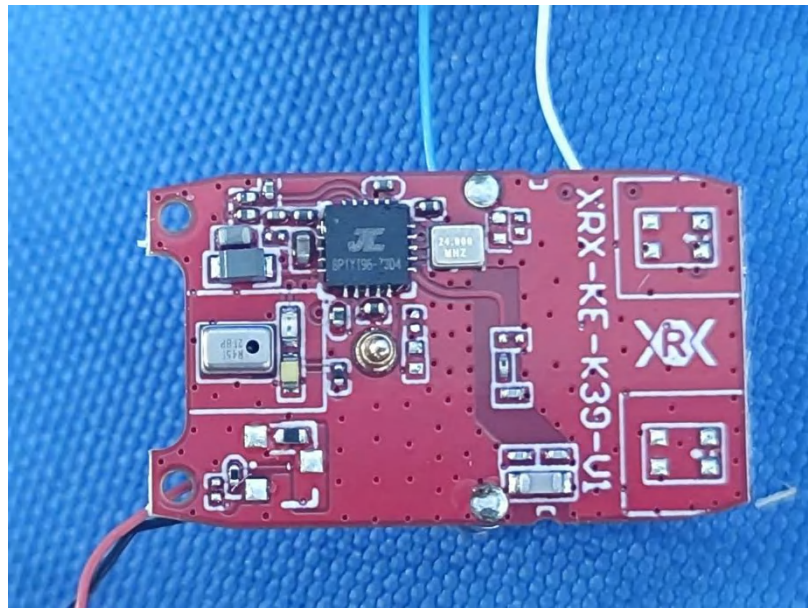
R:

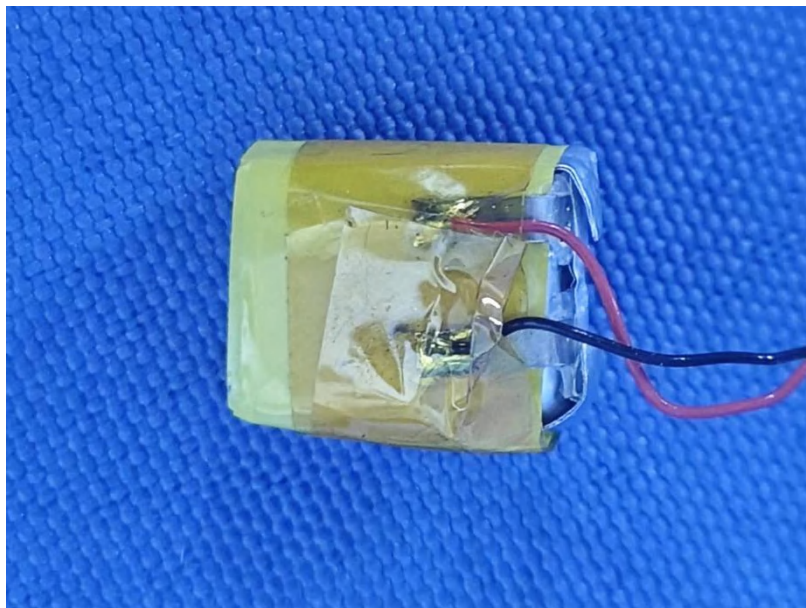
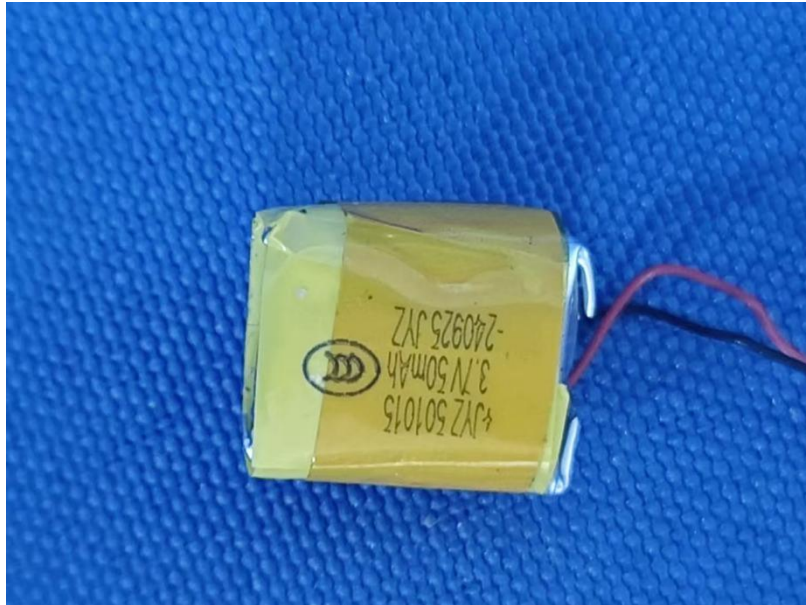












*****THE END REPORT*****