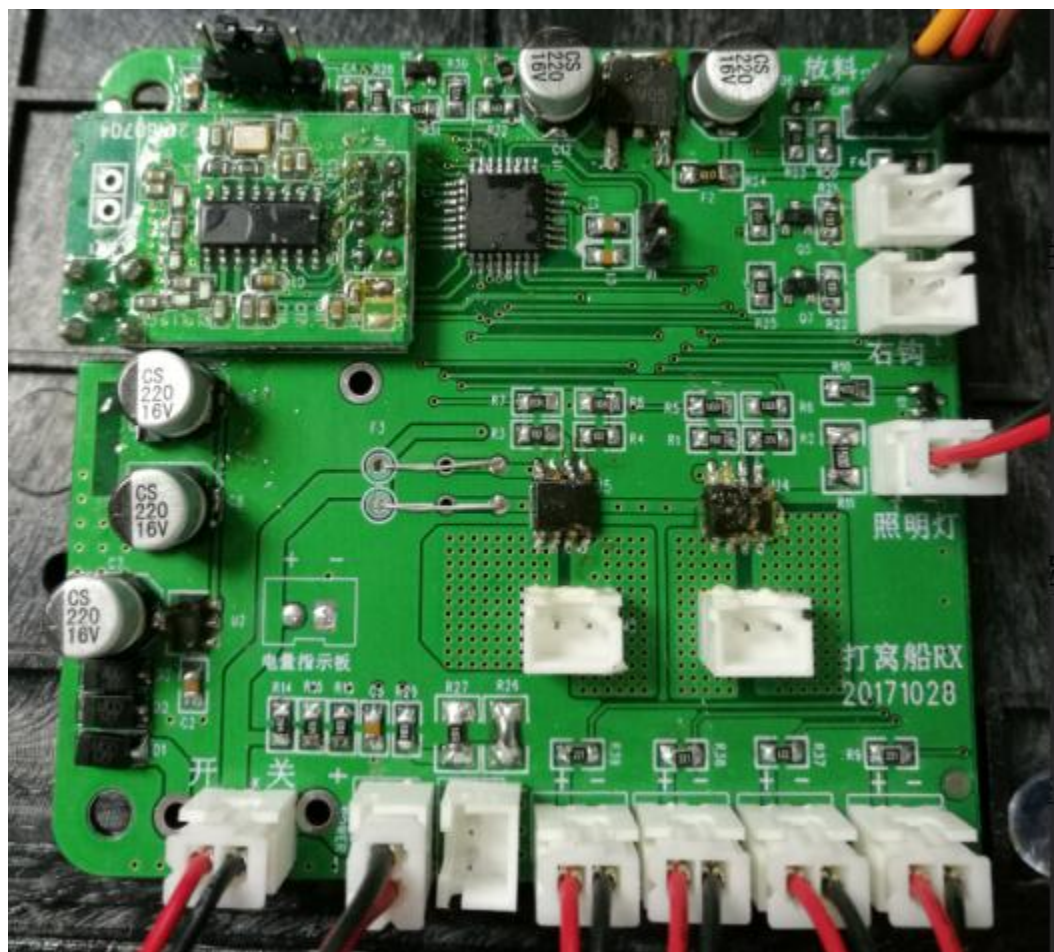
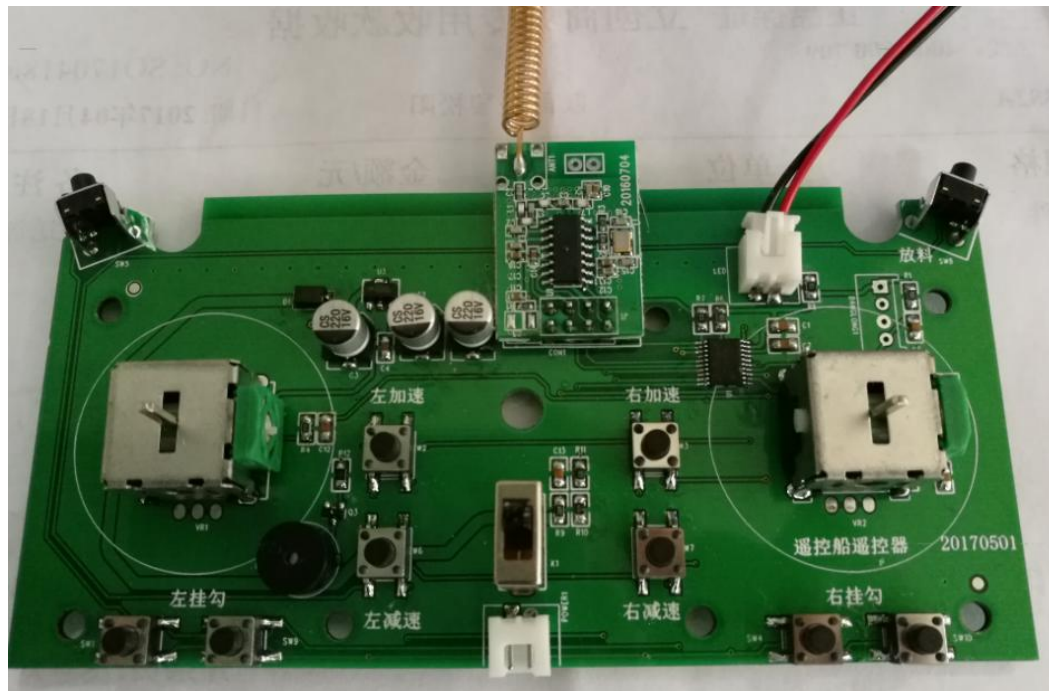


## Remote control boat instruction manual



**Adjust the maximum motor speed:**

**1. In normal use, the adjusted motor maximum speed is between 75% and 90%.**

**Press the motor left or right acceleration button, the remote control will be BE, indicating that the speed is increased by 1. When the speed is increased to 90%, the remote control will not press BE when the accelerator button is pressed, indicating that it has been set to the maximum.**

**Press the motor left or right deceleration button, the remote control will be BE, indicating that the speed is reduced by 1. When the speed is reduced to 40%, the remote control will not press BE when the deceleration button is pressed, indicating that it has been set to the minimum.**

**2. When setting, the user can use the joystick to remotely navigate the ship to see if it can sail straight.**

**Single boat use:**

**Use the remote lever to control the motor speed, press the left hook to place the left material, press the right hook to place the right material, press the home button to flash, press the discharge button LED light is always on, press to turn off the headlight.**

**In addition, when the ship is sailing, pressing the discharge button does not work, preventing the user from accidentally pressing the discharge**

**button. The material can only be discharged when the boat is stopped.**

**Voltage indication:**

**When the voltage of the remote controller is lower than 4.9v, the LED on the remote controller flashes slowly, indicating that the remote control battery is low voltage.**

**Ship's voltage indication:**

**More than 7.3v 4 LEDs are all bright**

**More than 7.0v 3 LEDs bright**

**More than 6.3v 2 LEDs bright**

**Less than 6.3v 1 LED bright**



## **FCC Statement**

This equipment has been tested and found to comply with the limits for a Class B digital device, pursuant to Part 15 of the FCC Rules. These limits are designed to provide reasonable protection against harmful interference in a residential installation. This equipment generates uses and can radiate radio frequency energy and, if not installed and used in accordance with the instructions, may cause harmful interference to radio communications. However, there is no guarantee that interference will not occur in a particular installation. If this equipment does cause harmful interference to radio or television reception, which can be determined by turning the equipment off and on, the user is encouraged to try to correct the interference by one or more of the following measures:

- Reorient or relocate the receiving antenna.
- Increase the separation between the equipment and receiver.
- Connect the equipment into an outlet on a circuit different from that to which the receiver is connected.
- Consult the dealer or an experienced radio/TV technician for help.

Changes or modifications not expressly approved by the party responsible for compliance could void the user's authority to operate the equipment.