



Outdoor Security Camera & Light



2-Way
Speaker



Wi-Fi*



Motion
Detection



Secure
App



Remote
Viewing



340°
View



Color
Night Vision

FHD

Full HD
3MP



Mobile
Alert



Supports
microSD Card

For instructional videos and FAQ's please visit
icustomerservice.com to learn more.

Distributed by Trend Makers, LLC • Fort Walton Beach, FL 32547

©2024 Trend Makers, LLC

Made in China

All Rights Reserved.



WARNING: Cancer and Reproductive Harm - www.P65Warnings.ca.gov

By purchasing this product, you accept Trend Makers' terms and conditions including arbitration agreement.
See enclosed for arbitration agreement. See trendmakersinc.com/arbitration-agreement for details.



i_OSCL_IB_ENG_V1_241021

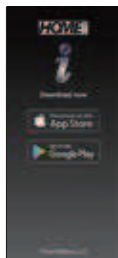


Outdoor Security Camera & Light

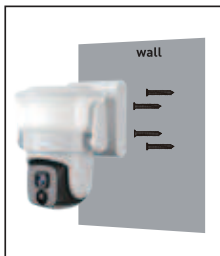


Trend Makers®

3 Simple Steps to Set-Up and Protect



Download the
HOMEi
App



Install the
Outdoor Security
Camera & Light
onto an outside wall



Connect your
Outdoor Security
Camera & Light
to the App by
scanning QR code

NOTE: To ensure proper use of your Outdoor Security Camera & Light please follow the instructions detailed in this set-up guide.

Setting Up Your Outdoor Security Camera & Light

This device complies with Part 15 of the FCC Rules. Operation is subject to the following two conditions:

- (1) this device may not cause harmful interference, and
- (2) this device must accept any interference received, including interference that may cause undesired operation.

FCC RF Radiation Exposure Statement Caution:

To maintain compliance with the FCC's RF exposure guidelines, place the product at least 20cm from nearby persons.

FCC ID: 2A88H-0033052283

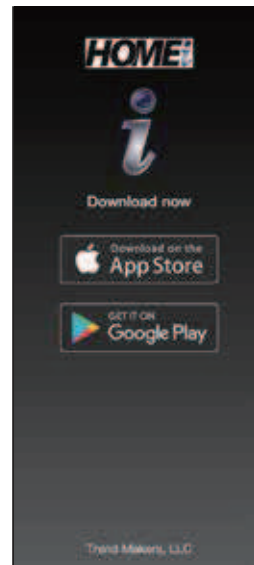
HVIN: IS B05

IC:32423- IS B05

Setting Up Your Outdoor Security Camera & Light

Step 1: Download the HOMEi App

1. Download the **HOMEi** app in the Apple® App Store, Google® Play Store, or use your phone camera to scan the QR code below to open the app store of your mobile phone.



Scan Code



Step 1: Download the HOMEi App

1. In order for your Outdoor Security Camera & Light to work properly, select **Allow** if you see the prompt: **HOMEi** would like to find and connect to devices on your local network.
2. Create your account and select **Continue**.
3. Follow the App prompts to set up your password and register your account. Then **Log In** to your **HOMEi app**.

Passwords must contain numbers and letters, be no less than six digits, and cannot contain special characters.

FORGOT PASSWORD:

In the App click on "Forgot Password" and follow the account retrieval process. You will receive an email with a temporary code. Enter the temporary code. You will receive a second email with your password.



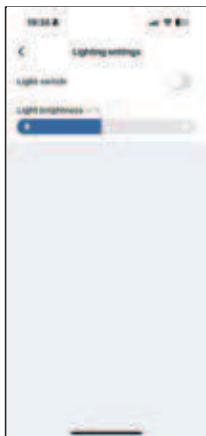
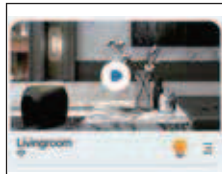
Warning: Changes or modifications to this unit not expressly approved by the party responsible for compliance could void the user's authority to operate the equipment.

Setting Up Your Outdoor Security Camera & Light

Step 4: How to Use Your Outdoor Security Camera

To get started, open your **HOMEi** app and follow these easy steps:

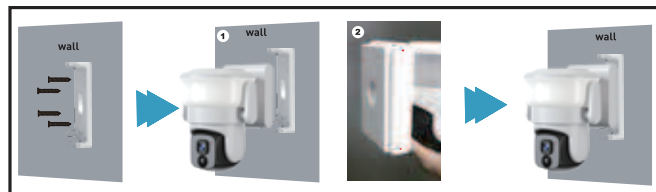
1. Choose the device you want to control.
2. Tap the Light icon, one-button switch control light ON or OFF.
3. Select your camera Setting :
 - Click Lighting settings
 - Adjust Light brightness
 - 0%-100%



Setting Up Your Outdoor Security Camera & Light

Step 2: Mounting the Outdoor Security Camera & Light

1. Use the provided screws to secure the mounting plate to a wall.
2. Then use the provided screws secure your Outdoor Security Camera & Light to the mounting plate



3. Turn on the camera switch, then press the reset button on the bottom of your Outdoor Security Camera & Light for about 5 seconds until you hear a "Reset successful, restarting!" sound.



Setting Up Your Outdoor Security Camera & Light

Step 3: Connect Your Outdoor Security Camera & Light to the App

1. Press the  **sign** in the App.



2. You will discover the ID number of the device and select “add to.”



3. Select or enter your location's WiFi® name, enter the WiFi® password. If your WiFi® is 5GHz, please set it be 2.4GHz by tapping Change Wi-Fi®, then press Next Step in the App.



Setting Up Your Outdoor Security Camera & Light

Step 3: Connect Your Outdoor Security Camera & Light to the App

4. The App will countdown until your Outdoor Security Camera & Light and mobile device are connected to your Wi-Fi® network.



5. Enter a name for your Outdoor Security Camera & Light, then click Done.



6. Now, you are ready to start using your Outdoor Security Camera & Light!



FCC WARNING

This device complies with part 15 of the FCC Rules. Operation is subject to the following two conditions: (1) this device may not cause harmful interference, and (2) this device must accept any interference received, including interference that may cause undesired operation.

Any changes or modifications not expressly approved by the party responsible for compliance could void the user's authority to operate the equipment.

NOTE: This equipment has been tested and found to comply with the limits for a Class B digital device, pursuant to Part 15 of the FCC Rules. These limits are designed to provide reasonable protection against harmful interference in a residential installation. This equipment generates, uses and can radiate radio frequency energy and, if not installed and used in accordance with the instructions, may cause harmful interference to radio communications. However, there is no guarantee that interference will not occur in a particular installation.

If this equipment does cause harmful interference to radio or television reception, which can be determined by turning the equipment off and on, the user is encouraged to try to correct the interference by one or more of the following measures:

- Reorient or relocate the receiving antenna.
- Increase the separation between the equipment and receiver.
- Connect the equipment into an outlet on a circuit different from that to which the receiver is connected.
- Consult the dealer or an experienced radio/TV technician for help.

To maintain compliance with FCC's RF Exposure guidelines, This equipment should be installed and operated with minimum distance between 20cm the radiator your body: Use only the supplied antenna.

IC Warning

This device complies with Innovation, Science and Economic Development Canada's license-exempt RSS standard(s). Operation is subject to the following two

conditions: (1) this device may not cause interference, and (2) this device must accept any interference, including interference that may cause undesired operation of the device.

Under Innovation, Science and Economic Development Canada's regulations, this radio transmitter may only operate using an antenna of a type and maximum (or lesser) gain approved for the transmitter by Innovation, Science and Economic Development Canada's. To reduce potential radio interference to other users, the antenna type and its gain should be so chosen that the equivalent isotropically radiated power (e.i.r.p.) is not more than that necessary for successful communication.

This device complies with Canadian ICES-003 and RSS-247.

Radiation Exposure: This equipment complies with Canada radiation exposure limits set forth for an uncontrolled environment.

IC Radiation Exposure Statement

The antennas used for this transmitter must be installed to provide a separation distance of at least 20 cm from all persons and must not be co-located for operating in conjunction with any other antenna or transmitter.

Avertissement IC

Cet appareil est conforme aux normes RSS exemptées de licence d'innovation, sciences et développement économique Canada. Le fonctionnement est soumis aux deux

Conditions: (1) ce dispositif ne peut pas causer d'interférence, et (2) ce dispositif doit accepter toute interférence, y compris l'interférence qui peut causer un fonctionnement indésirable de l'appareil.

En vertu du règlement d'innovation, sciences et développement économique Canada, cet émetteur radio ne peut fonctionner qu'à l'aide d'une antenne d'un type et d'un gain maximal (ou inférieur) approuvé pour l'émetteur par Innovation, sciences et développement économique Canada. Pour réduire les interférences radio potentielles avec d'autres utilisateurs, le type d'antenne et son gain devraient être choisis de telle sorte que la puissance équivalente à rayonnement isotropique (E.I.R.P.) ne soit pas supérieure à celle nécessaire pour une communication réussie.

Cet appareil est conforme aux normes ICES-003 et RSS-247 canadiennes.

Exposition au rayonnement: cet équipement est conforme aux limites canadiennes d'exposition au rayonnement établies pour un environnement non contrôlé. Déclaration d'exposition au rayonnement IC

Les antennes utilisées pour cet émetteur doivent être installées pour assurer une distance de séparation d'au moins 20 cm par rapport à toutes les personnes et ne doivent pas être co localisées pour des raisons de sécurité.

Fonctionner en conjonction avec toute autre antenne ou émetteur.