

LATEST AND GREATEST
Our team is constantly improving your product experience. This model may have new features or controls which are not detailed in this guide.
For the latest version of the manual, scan the QR code below.



This device meets the ISED radiation exposure requirements set forth for an uncontrolled environment. The requirements set a SAR limit of 1.6 W/kg averaged over one gram of tissue. The highest SAR value reported under this standard during product certification for use, when properly worn on the body or certification on the head, with no separation.

IS: 13252(PART 1): 2010 IEC 60950-1: 2005 IS: 616: 2017 IEC 60065: 2014

R-41213802 www.jlab.gov.in R-41222810 www.jlab.gov.in

FOC ID: 2411YV-GAPOP2 R-21315K-GAPOP2

202-JKM105 Complies with MDA Standards DA00006A

WITH LOVE FROM THE LAB

We have lots of different ways to show we care.

GET STARTED + FREE GIFT

Product updates | How-to tips | FAQs & more

Go to jlab.com/register to unlock your customer benefits including a free gift.

Gift for US only. No APD/PPD/DPA addresses.

WE GOT YOUR BACK

We're obsessed with creating the best possible experience around owning our products. If you have any questions, concerns, or feedback, we're here for you. Contact a real human on our U.S.-based customer support team:

Website: jlab.com/contact Email: support@jlab.com

Phone U.S.: +1 (409) 445-7219

Phone U.K./EU: +44 (20) 8142 9361

(Check hours jlab.com/hours)

Visit jlab.com/warranty to initiate a return or exchange.

THE RIGHT SOUND FOR EVERY MOMENT

We get it, sound is personal. Choose your sound preferences from our EQ3 settings and customize your sound style to match exactly what you're doing.

EQUALIZER MODES

"JLab SIGNATURE"
JLab C3™ signature sound with amplified vocals and bass

BEST FOR
Best option for most music
Pop, rock, country, electronic and more

"BALANCED"
Even sound with no additional sound enhancements

BEST FOR
Podcasts, Audiobooks
Classical music

"BASS BOOST"
Amplified bass and sub-bass

BEST FOR
Working out, sport and fitness
Hip hop, rap, electronic

"CUSTOM"
Personalize your EQ through the JLab App.

OUTSIDE

FIND YOUR FIT



Try all ear tips for best fit and proper seal.



Place the earbud in the ear canal and slightly rotate to adjust for best fit.

QUICK TIPS

- The left or right earbud can be used independently for music and phone calls. Simply choose one and take out of the case to connect.
- Only ONE Bluetooth device can be connected at a time. Turn off Bluetooth on unwanted devices and turn on Bluetooth on chosen device to connect.
- Fully dry off earbuds before putting in the charging case to avoid any damage to the case. The earbuds are sweat/water resistant but the case is not.

TROUBLESHOOTING CONNECTION FAILURE OR EARBUDS DISCONNECTED FROM EACH OTHER (MANUAL RESET)

- Keep the earbuds in the charging case and forget "JLab GO Pop+" from your Bluetooth device settings.
- Quick tap 7x on one earbud in charging case. Earbud blinks blue 4 times.
- Quick tap 7x on other earbud in charging case. Earbud blinks blue 4 times.
- Take both earbuds out of the charging case. One earbud will be solid white and other will blink blue/white indicating ready to pair to your device.

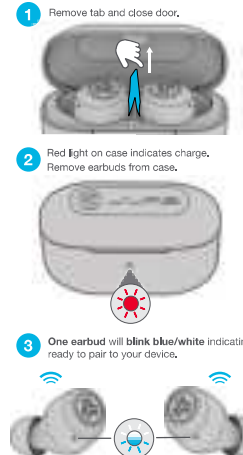
Instructional videos at:
[JLAB.COM/SUPPORT/GOPOPPLUS](https://jlab.com/support/gopopplus)



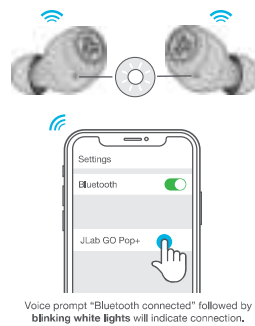
QUICK START GUIDE

INSIDE

PAIR UP



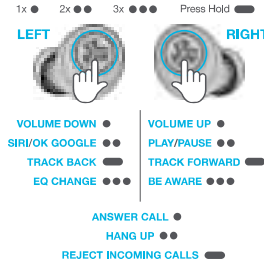
- Select "JLab GO Pop+" in your device's Bluetooth settings to connect.



ADDING NEW/ADDITIONAL BLUETOOTH DEVICES:

Turn OFF Bluetooth from any previously connected device. Turn ON Bluetooth on new device. Take earbuds out of the case. Earbuds will automatically enter Bluetooth Pairing. Select "JLab GO Pop+" in device settings to connect.

GO AHEAD, PRESS THE BUTTON



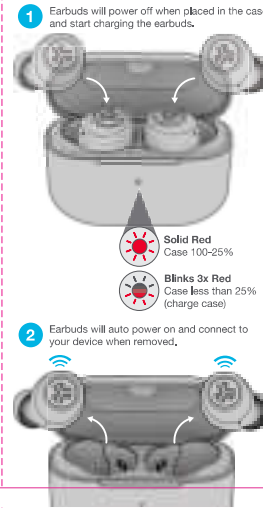
DOWNLOAD THE APP

Customize GO Pop+ features and update the latest software.

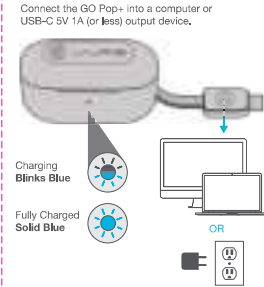
Download the JLab App in Apple/Google Play Store.



GET CHARGED (EARBUDS)



GET CHARGED (CASE)



WELCOME TO THE LAB

The Lab is where you'll find real people, developing really great products, in a real place called San Diego.

PERSONAL TECH DONE BETTER

- Designed for You**
We actually listen to what you want and we're always looking for ways to make everything easier and better for you.
- Lab Quality Sound**
Choose from different settings and customize your sound style to match exactly what you're doing.
- Surprisingly Awesome Value**
We always pack in the most functionality and fun into every product at a truly accessible price.

#yourkindoftech

	Date: 03.19.24
PROJECT: GO Pop+ QSG	
STOCK: 157g, MATTE	
INK: 4/4 CMYK/CMYK	
FLAT SIZE: 353.3mm x 110mm	
FOLDED SIZE: 58,815mm x 110mm	