

HP Sprocket Panorama Printer

Turn moments into memories with the HP Sprocket Panorama Printer

Parts and Controls

- Supplied Items
- Product Overview
- Power Button
- How to Reset your HP Sprocket Panorama printer
- Caring for your HP Sprocket Panorama printer

Lighting and Troubleshooting

- Status LED Indicator Light
- Troubleshooting

Getting Started

- Installing Mobile App
- Loading Paper
- Charging Battery and Power On/Off
- Pairing a Mobile Device and the HP Sprocket Panorama printer

Specifications

Technical Information



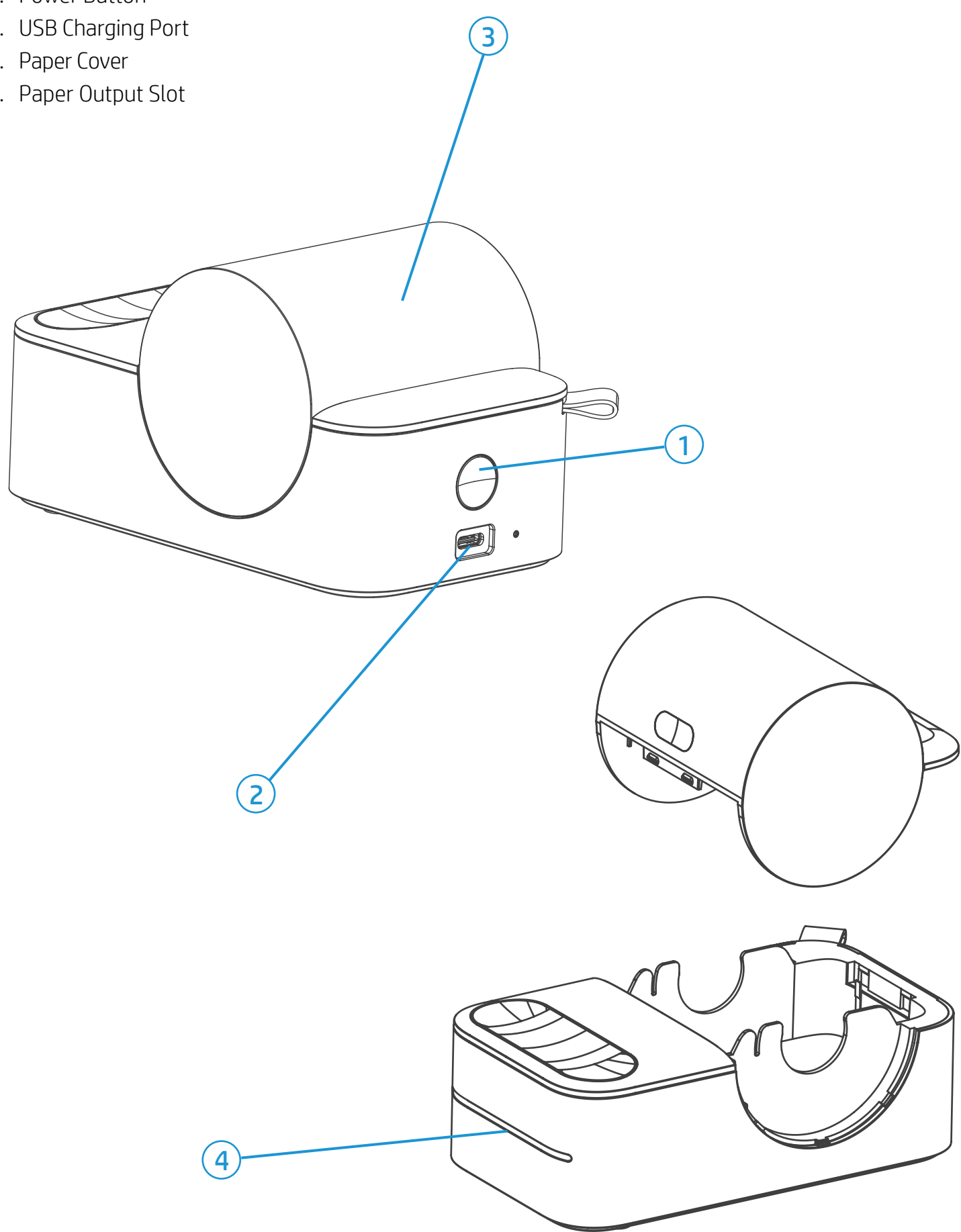
Parts and Controls

Supplied Items

- HP Sprocket Panorama Printer
- Setup Instructions
- HP Sprocket Panorama Printer 3.5 x 1.0 - 9.0" (8.9 x 2.5 - 22.5cm) Photo Paper (1 roll included)
- USB-C Charging Cable
- Regulatory Information

Product Overview

- 1. Power Button
- 2. USB Charging Port
- 3. Paper Cover
- 4. Paper Output Slot



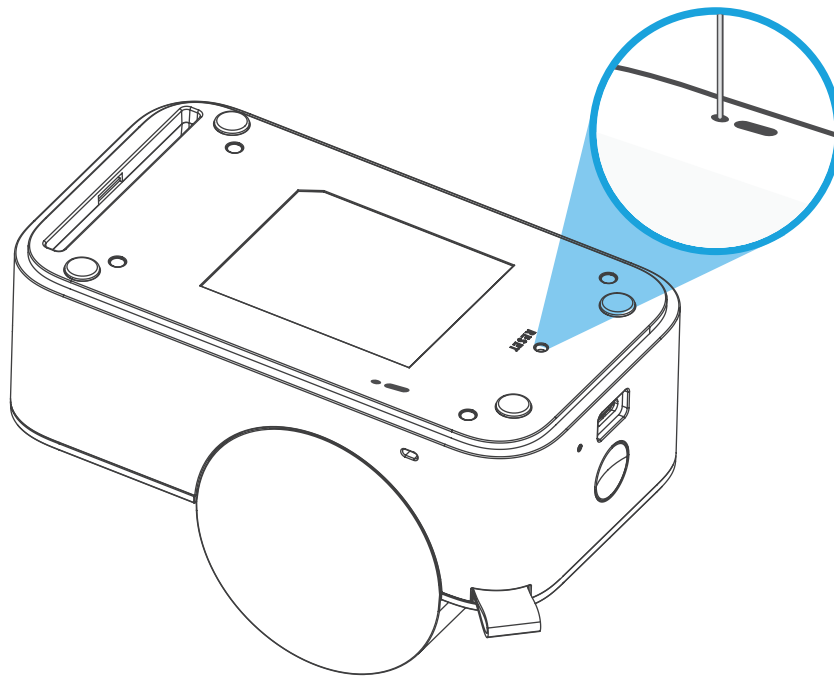
How to Reset your HP Sprocket Panorama Printer

There are two ways you might need to reset your Sprocket printer:

Hardware Reset

If the printer isn't responding or won't connect to your mobile device, try performing a hardware reset. Remove the Paper Cover and press and hold the small round button near the Paper Tray until the printer turns off. The printer will automatically restart.

When you complete a hardware reset, your personalized settings will be saved (Custom Name, Personal Color, etc.).



Factory Reset

Perform a factory reset to return to the default settings if you want to gift your Sprocket to someone else. A factory reset might also be used if Privacy is turned on for your mobile device and the device is lost. Completing a factory reset would allow a new phone to connect. Before completing a factory reset, update your printer firmware.

You can initiate a factory reset by using the steps below. A factory reset can only be completed when the USB charging cable is NOT connected to the printer.

1. Hold the power button for about 7 seconds. After 3 seconds, the Status LED light will turn off to indicate the printer is shutting down; continue to hold the Power button until the LED lights start to flash.
2. Release the power button. The LEDs will continue blinking for about 6 seconds.
3. While the LEDs are blinking, press and release the power button. The device will remain off until you power on again.
4. Power on; the printer will be reset to factory settings. After a factory reset, all settings are reset to factory defaults (Custom Name, LED color, Sleep Time, Auto-Off, etc.).

If you decide you do **NOT** want to reset the printer to factory defaults, you can abandon the reset. While the LEDs are blinking, do not press the Power button as directed in step three above. This will cancel the factory reset.

Note:

If you want to pair again with your device after a Factory Reset, make sure to also "forget" your device in your operating system's Paired Devices list. Then, re-pair in the Sprocket app.

Caring for your HP Sprocket Panorama Printer

- Remove fingerprints, dust, and dirt from the printer using a dry microfiber cloth.
- Keep the Paper Cover closed to prevent dust and debris from entering the paper path.
- Update the printer firmware. Make sure your mobile device is connected to the Internet and then open the Sprocket app. Turn on the printer and connect it to the Sprocket app. If there is a firmware update available, a firmware update screen displays. Follow the on-screen prompts to complete the update. Your printer must be charged to 25% or higher before a firmware update.
- Keep your Sprocket app updated. If you don't have your mobile app set to automatically update, go to the appropriate app store and make sure the latest version is installed.

Lighting and Troubleshooting

Status LED Indicator Light

The color of the Status LED Indicator Light can be personalized in the Sprocket app. The default color is Light blue, indicated in this table.

Color/Status	HP Sprocket Condition	Description
Off	Powered off/Sleep	Device is turned off, in Sleep mode, the lid is off, or the battery is completely drained. If the battery is Critically Low or drained, you cannot print.
Light blue (default) (Or owner's personal color)	Idle	Printer is idle. The color of this LED can be personalized in the Sprocket app.
Light blue (default), Blinking (Or owner's personal color)	Sprocket is printing from the Owner's mobile device	The LED will quickly flash light blue/personal color three times when a print job is sent from an Owner's mobile device. While printing, the LED will slowly pulse white/personal color.
Personal or Assigned Guest Color (Yellow, Blue, Green, Purple, Pink. Color set in the Sprocket app)	Sprocket is printing from a Guest mobile device	The LED will quickly flash the owner/guest's color three times when a print job is sent by a particular user. While printing, the LED will slowly pulse the owner/guest's color.
Owner/Guest color, Blinking slowly or solid	Sprocket is overheated	The printer will pause printing until temperature returns to normal and resume automatically.
Red, Blinking slowly	Printer Error State	Printer might be out of paper. Check the Charge LED light for power bank status. Resolve the error to continue printing.
Solid Red	Printer Error State	The battery is low. Charge the printer.
Red, Blinking fast	Printer Error State	The printer might have a paper jam or is in an unrecoverable state. Complete a hardware reset to resolve.
Alternating colors, Sparkling	Firmware Update	Printer firmware updating. Make sure not to close the Sprocket app or unplug from power during the update.

Charge LED Indicator Light

Charge LED: USB cable not connected

Color/Status	HP Sprocket Condition	Description
Green	Fully Charged	Device is fully charged, 90-100%
Amber	Medium Charge	Device charge is between 16-89%
Blinking Red	Low Charge	Device has a low battery and will need to be charged soon (4-15%).

If the USB cable is not connected and your printer battery is critically low (1-3% charged), the **Status LED** light will turn off and the printer will become unresponsive. You will not be able to print when the battery is critically low. The **Charge LED will continue to blink red**. Charge the printer as soon as possible.

Charge LED: USB cable connected

Green	Fully Charged	Device is fully charged.
Amber	Medium Charge	Device charge is 16-99%
Red	Low and Critically Low Charge	Device has a low battery and is charging.

Troubleshooting

The Sprocket app will alert you to various error conditions through in-app messaging. Follow the app instructions to resolve issues.

For additional help on specific issues with your HP Sprocket Panorama Printer, see the Troubleshooting documents and FAQs on the HP Support site (sprocketprinters.com/pages/support).

Getting Started

Installing Mobile App

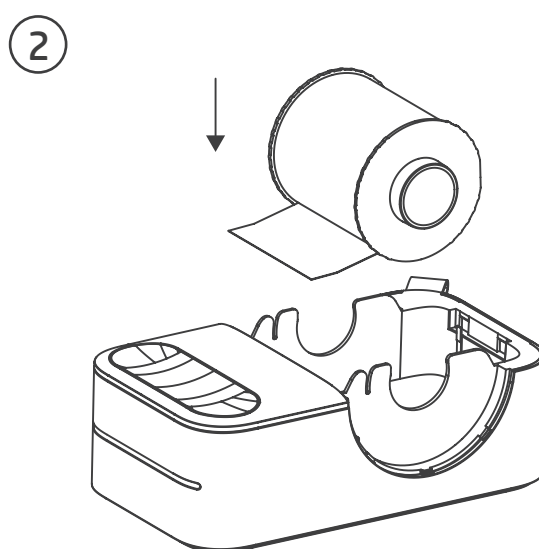
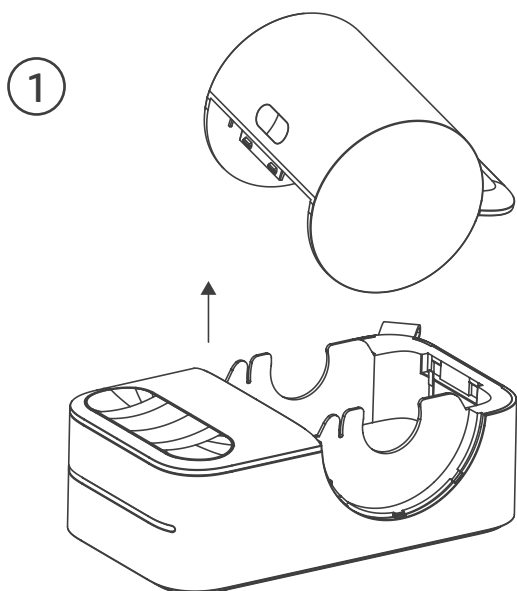
To use your HP Sprocket Panorama Printer with your mobile device, you must download the companion Sprocket app from the App Store® or on Google Play™ (or your local app store). To download the Sprocket app, visit sprocketprinters.com/pages/support. There, you will be directed to the appropriate app store for your device.

- Supported by Android™ devices using OS v5.0 and above / iOS 10.0.2 and above.
- Made for iPhone 12, 12 Pro, 12 Pro Max, 12 Mini/11, 11 Pro, 11 Pro Max, SE 2/X, XR, XS, XS Max/8, 8 Plus/7, 7 Plus, SE/6, 6 Plus, 6s, 6s Plus/5, 5s, 5c and iPad Pro 12.9" (1st, 2nd, and 3rd generation), Pro 11"/iPad (4th, 5th, and 6th generation)/Pro 10.5", Pro 9.7"/Air, Air 2/Mini 2, Mini 3, Mini 4 and iPod touch (6th generation).
- You must install the companion Sprocket app to operate the HP Sprocket with your mobile device.
- If you previously installed the Sprocket app, you can access setup instructions for HP Sprocket Panorama Printer in the Help & How To menu.



Loading Paper

1. Take off the Paper Cover by lifting up. This will release the lid and allow you to lift off the Paper Cover to load paper. The lid is attached with magnets.
2. Unwrap a pack of HP Sprocket Panorama Printer Photo Paper Roll. Stack the photo Paper Roll on top facing down.
3. Place both the paper and Print Quality Card into the Paper Tray.
4. Replace the Paper Cover to finish loading paper. You will feel the magnets latch the lid into place.

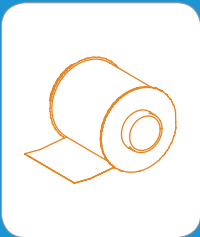


Print Quality Card Use:

Load the Print Quality Card with each new pack of paper. Each foil-pack has an included colored card; the card is specially-made to prepare your printer for the paper in that pack. The Print Quality Card cleans and calibrates the printer for the pack of paper that it came in. The card will pass through the HP Sprocket Panorama Printer automatically after loading paper.

If you notice print quality issues, load the colored card again. Discard the colored card after you have printed all 5 sheets in the foil-pack. You will get a new Print Quality Card for the next pack of paper you load.

What size paper do I need to buy for my HP Sprocket?



Only use HP Sprocket Panorama Printer 3.5 x 1.0 - 9.0" (8.9 x 2.5 - 22.5cm) Photo Paper (1 roll included) with HP Sprocket Panorama Printer. You can purchase additional paper in the Sprocket app by tapping "Buy Paper" in the Main Menu or from sprocketprinters.com.

Make sure to use genuine HP Sprocket Panorama Printer 3.5 x 1.0 - 9.0" (8.9 x 2.5 - 22.5cm) Photo Paper Roll.

You can purchase genuine HP Sprocket Panorama Printer 3.5 x 1.0 - 9.0" (8.9 x 2.5 - 22.5cm) Photo Paper Roll from the app or from other retailers.

Caution:

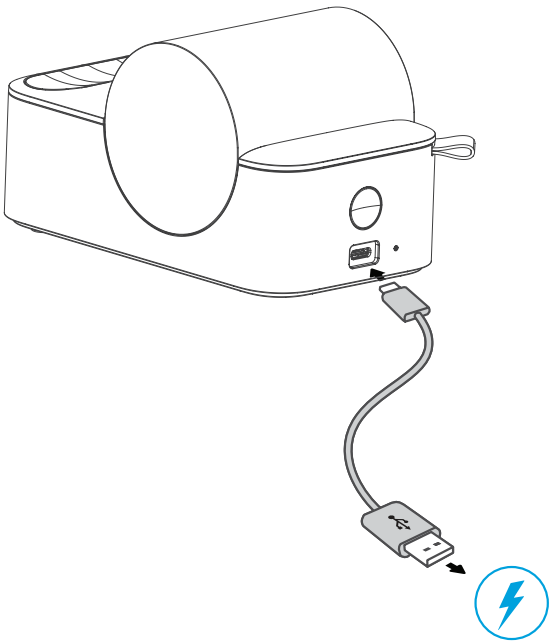
- Do not insert more than 1 pack of HP Sprocket Panorama Printer Photo Paper (5 sheets plus the Print Quality Card) into the device at a time to avoid paper jams or print errors.
- Only use HP Sprocket Panorama Printer with the device to avoid paper jams and malfunctions. You can purchase additional paper within the Sprocket app by tapping "Buy Paper" in the Main Menu.
- In the case of a paper jam, do not pull on the paper. Instead, turn the device off and on again to automatically eject the paper.
- Do not pull the paper out of the device during printing.
- If spills or moisture collect on a photo, wipe it away as soon as possible to prevent color damage.
- Keep photo paper clean and free of bends or damage for best print quality.

To charge, insert the USB-C Charging Cable into the HP Sprocket Panorama Printer.

Charging Battery and Power On/Off

1. To charge, insert the USB-C Charging Cable into the HP Sprocket Panorama Printer.
2. Connect the Micro-USB Cable to a power source.
3. When connected, the Charge LED Indicator Light will turn on to indicate charging. See "LED Indicator Lights: Charge and Status" for more information.
4. To charge fully, allow the device to charge until the Charge LED Indicator Light turns green.
5. Turn on the device by pressing the Power Button until the Status LED Indicator Light illuminates and turns solid white (default) or personalized color. The printer can also be turned on by connecting the USB cable to a power supply.
6. Turn off the device by pressing the Power Button until the Status LED Indicator Light goes dark.

- Continued use during charging will slow down the charging speed.
- Connect the USB-C Cable to a power source capable of supplying 5 V DC/2 A.
- Use only with Listed ITE (Information Technology Equipment)



Pairing a Mobile Device and the HP Sprocket Panorama Printer

Pair quickly and easily with your HP Sprocket Panorama Printer using the in-app setup instructions. On first launch of the Sprocket app, select “my sprocket”.

The in-app instructions will help you easily pair with your mobile device within the app.

You can also access the setup instructions anytime from the Help & How To menu.

For Android™ and iPhone®

1. Press and hold the Power Button to turn on the printer. The Status LED Indicator Light will light up when fully powered on.
2. Open the Sprocket app. Expand the Main menu and tap **sprocket**
3. Tap **Manage Printers**. This opens a dropdown list of printers you have previously connected to. Select your printer, or tap **Add new printer**.
4. If you are adding a new printer, select the printer you want to connect to from the list. Follow the on-screen messages.

To add a new printer:

1. Press and hold the Power Button to turn on the printer. The Status LED Indicator Light will light up once fully powered on.
2. Open the Sprocket app. Expand the Main menu and tap **sprocket**
3. Tap **Manage Printers**. This will open a dropdown list of printers you have previously connected to. Select your printer, or tap **Add new printer**.
4. If you are adding a new printer, select the printer you want to connect to from the list. Follow the on-screen messages.

Check out the [HP Sprocket app user guide](#) to learn more how to use the Sprocket app and all the fun features available for your printer!

Safety Information

For regulatory and safety notices, refer to the included sheet in your product packaging and the following statements.



Battery Safety

- Do not disassemble the product or battery or short the battery terminals.
- Avoid contact with a leaking or damaged battery.
- Adult supervision is recommended when the product is being used by young children.
- Do not disassemble, strike, press, or put in a fire.
- Do not use the printer if the product battery is swelling and causing product expansion.
- Keep the device clear of high temperatures and moisture.

Specifications

Specification	Description
Product number	HPISPPAN
Dimensions and weight	<ul style="list-style-type: none">• Dimensions: 5.1" x 6.4" x 1.1" (128.9 x 162.7 x 28.9 mm)• Weight: 0.9 lbs. (390 g)
Connectivity	Bluetooth 5.0
Printer management	HP Sprocket app
Power supply	Li-ion 7.4 V – 2 cell internal rechargeable battery 1,000 mAh mAh internal battery
Charge time	120 minutes
Power consumption	0.94 W (standby) Average 26 W (based on first print) Maximum 34 W at 25° C (77° F)
Print technology	Thermal printing with a ZINK® Zero Ink® printer <ul style="list-style-type: none">• Note: The HP Sprocket does not use ink cartridges to print.
Supported paper	HP Sprocket 3.5 x 1.0 - 9.0" (8.9 x 2.5 - 22.5cm) Photo Paper Roll
Borderless printing	Yes
Supported file types	.jpeg, .tiff (iOS only), .gif, .bmp, and .png <ul style="list-style-type: none">• Note: If you send a non-supported file type, the print job does not print.
Paper tray capacity	Up to 10 pages with the Print Quality Card
Memory	64 MB
Print quality	287 x 505 dots per inch (dpi)
Mobile connectivity	<ul style="list-style-type: none">• Supported by Android™ devices using OS v5.0 and above / iOS 10.0.2 and above.• Made for iPhone 12, 12 Pro, 12 Pro Max, 12 Mini/11, 11 Pro, 11 Pro Max, SE 2/X, XR, XS, XS Max/8, 8 Plus/7, 7 Plus, SE/6, 6 Plus, 6s, 6s Plus/5, 5s, 5c and iPad Pro 12.9" (1st, 2nd, and 3rd generation), Pro 11"/iPad (4th, 5th, and 6th generation)/Pro 10.5", Pro 9.7"/Air, Air 2/Mini 2, Mini 3, Mini 4 and iPod touch (6th generation).
Control panel	Power Button; Reset Button; Charge and Status Indicator LED Lights
Environmental parameters	<ul style="list-style-type: none">• Operating humidity: 5% to 70% RH (recommended)• Non-operating humidity: <5% RH or >71% RH• Operating temperature: 5° to 40° C (41° to 104° F)• Recommended operating temperature: 15° to 32° C (59° to 90° F)• Storage temperature: -40° to 60° C (-40° to 140° F)• Media Storage: 32-77° F (0-25° C), 40-60% RH
Warranty	One-year limited hardware warranty. Visit sprocketprinters.com for more information.
Regulatory Model Number	For regulatory identification purposes, your product is assigned with a Regulatory Model Number. The regulatory model number should not be confused with the marketing names or product numbers. The Regulatory Model Number for your product is VCVRA-1901.

Technical Information

Regulatory notices

For regulatory, environmental, and safety notices, refer to the included sheet in your product packaging and the following statements. This printer meets product regulatory requirements from regulatory agencies in your country/region. This section contains the following topics:

- FCC Statement
- Notice to Users in Canada

FCC statement

The United States Federal Communications Commission (in 47 CFR 15.105) has specified that the following notice be brought to the attention of users of this product.

This equipment has been tested and found to comply with the limits for a Class B digital device, pursuant to Part 15 of the FCC Rules. These limits are designed to provide reasonable protection against harmful interference in a residential installation. This equipment generates, uses, and can radiate radio frequency energy and, if not installed and used in accordance with the instructions, may cause harmful interference to radio communications. However, there is no guarantee that interference will not occur in a particular installation. If this equipment does cause harmful interference to radio or television reception, which can be determined by turning the equipment off and on, the user is encouraged to try to correct the interference by one or more of the following measures:

- Reorient or relocate the receiving antenna.
- Increase the separation between the equipment and receiver.
- Connect the equipment into an outlet on a circuit different from that to which the receiver is connected.
- Consult the dealer or an experienced radio/TV technician for help.

Modifications (part 15.21)

Any changes or modifications made to this device that are not expressly approved by HP may void the user’s authority to operate the equipment.

For further information, contact:

Manager of Corporate Product Regulations
HP Inc.
1501 Page Mill Road, Palo Alto, CA 94304, U.S.A
Email contact: (hpsprocket@caglobal.com) or Telephone contact: 877-424-9746

This device complies with Part 15 of the FCC Rules. Operation is subject to the following two conditions: (1) this device may not cause harmful interference, and (2) this device must accept any interference received, including interference that may cause undesired operation.

Notice to users in Canada/Note à l’attention des utilisateurs canadiens

Under Innovation, Science and Economic Development Canada regulations, this radio transmitter may only operate using an antenna of a type and maximum (or lesser) gain approved for the transmitter by Innovation, Science and Economic Development Canada. To reduce potential radio interference to other users, the antenna type and its gain should be so chosen that the equivalent isotropically radiated power (e.i.r.p.) is not more than that necessary for successful communication.

This device complies with Innovation, Science and Economic Development Canada licence-exempt RSS standard(s). Operation is subject to the following two conditions: (1) this device may not cause interference, and (2) this device must accept any interference, including interference that may cause undesired operation of the device.

The device has been evaluated to met general RF exposure requirement. The device can be used in portable exposure condition without restriction.

Get in Touch:

www.sprocketprinters.com/pages/support

iPad, iPad Air, iPad Pro, iPad mini, iPhone, and iPod touch are trademarks of Apple Inc., registered in the U.S. and other countries. App Store is a service mark of Apple Inc.

Android and Google Play are trademarks of Google Inc. Google and Google Logo are registered trademarks of Google Inc.

HP and Sprocket are owned by HP Inc. or its affiliates.

The ZINK Technology® and ZINK Trademarks® are owned by ZINK Holdings LLC. used under license.

All other products, brand names, company names, and logos are trademarks of their respective owners, used merely to identify their respective products, and are not meant to connote any sponsorship, endorsement, or approval.

Manufactured and distributed by C&A Marketing, Inc. under license from HP Inc.

HP Inc., 1501 Page Mill Road, Palo Alto, CA 94304 © Copyright 2022 HP Development Company, L.P. All Rights Reserved.
Made in Vietnam.