



深圳市麒鑫通达科技有限公司

SHENZHEN QXTD Technology Co., Ltd

Address: West side, 3rd floor, Building 1, Shayi North Yongfa Science Park, Xinhe Road, Gonghe Community, Shajing Street, Baoan District, Shenzhen

## Part Approval Sheet

Version: V1.0

Customer: Shenzhen Haikangsheng Intelligent Co., Ltd

Project: Bluetooth antenna

Part Name: Conducting wire

Part Color: Black

Part Number: \_\_\_\_\_

Sample Delivery Date: April 3, 2021

Sample Quantity: 5PCS

Sample type: Built-in Bluetooth wire

Reason for Sample Delivery: ☐New tooling ☐New supplier ☐Tooling change ☐Engineering change ☐Other:

Remark: \_\_\_\_\_

Supplier sample production confirmation: (stamp required)

Formulate	Confirm	Approve	Quality	Stamp
Qingrong Dai	Chaoqun Long	Liangcheng Fu	Cao Guangping	

Customer approval:

Project confirmation	Project approval	Quality confirmation	Quality approval	Confirmation date



## 1. Graphic for reference



Figure 2 0.8\*20mmBT

Name	ANTENNA
Model	LT13
Frequency	2.4Ghz
Input impedance	50Ω
Allowed power	5mW
Working temp.	-25 ~ +65 °C
Storage temp.	-40 ~ +85 °C
Weight	0.25g
Antenna gain	-1dBi

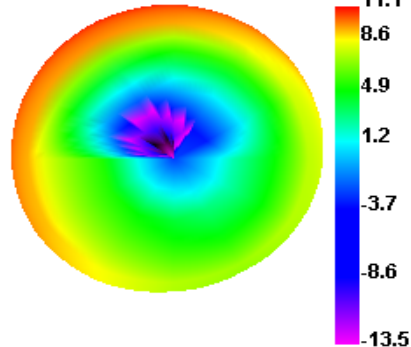
## 2. OTA(Free Space)

Channel	TRP (dBm)	TIS (dBm)
0	6.3	-91.1
39	6.5	-91.3
78	6.6	-91.2

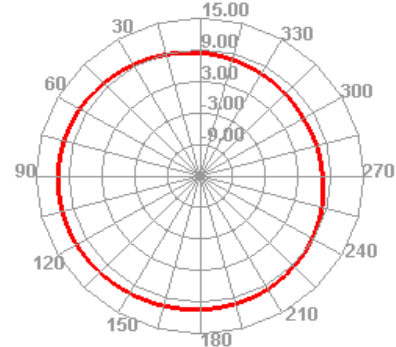


### 3.Field

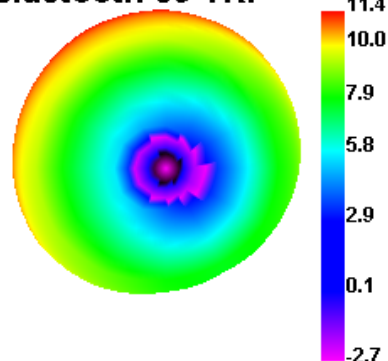
Bluetooth 0 TRP



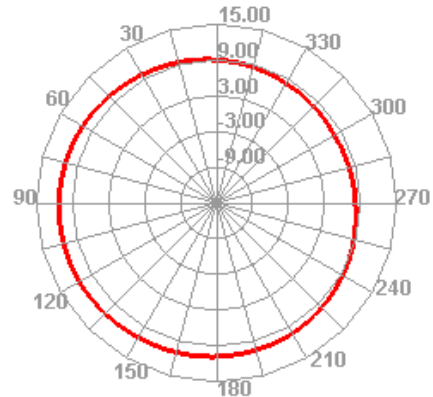
Bluetooth 0 TRP H



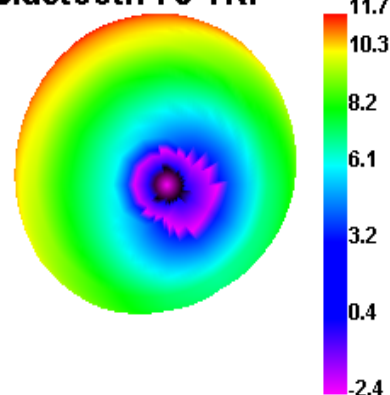
Bluetooth 39 TRP



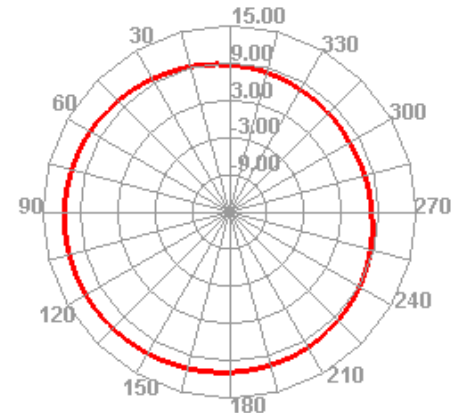
Bluetooth 39 TRP H



Bluetooth 78 TRP



Bluetooth 78 TRP H



### 4. BT Test



Test term	Environment	Max pairing distance	BT Call distance	
BT	Office	16-18m	10-12m	

## 5. Blueprint

