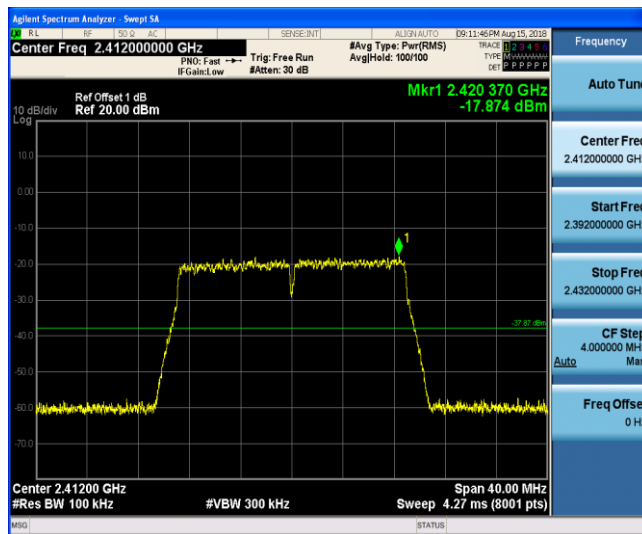
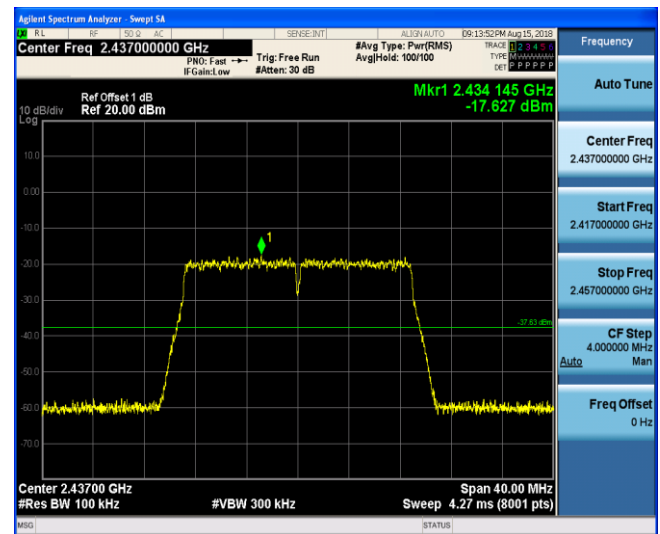


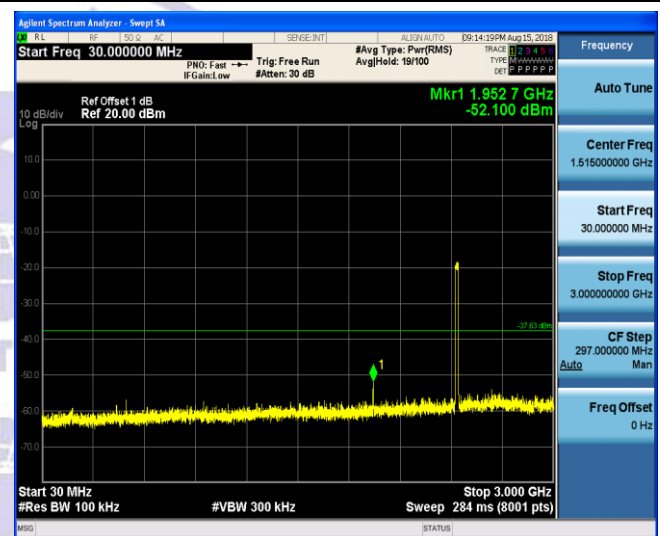
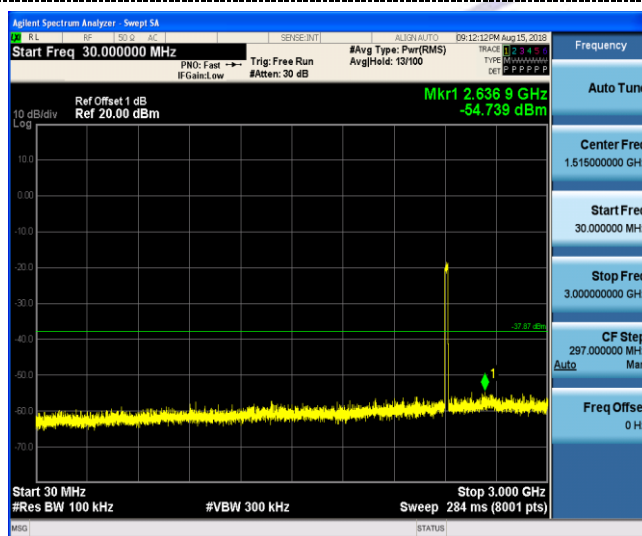
## 802.11n(HT20) CH01



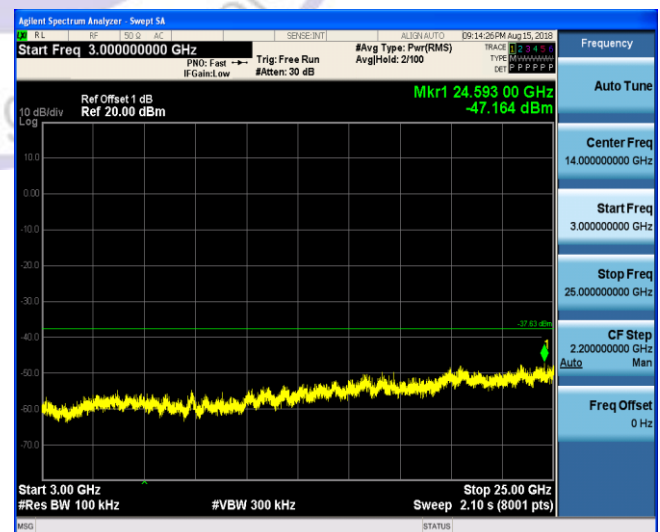
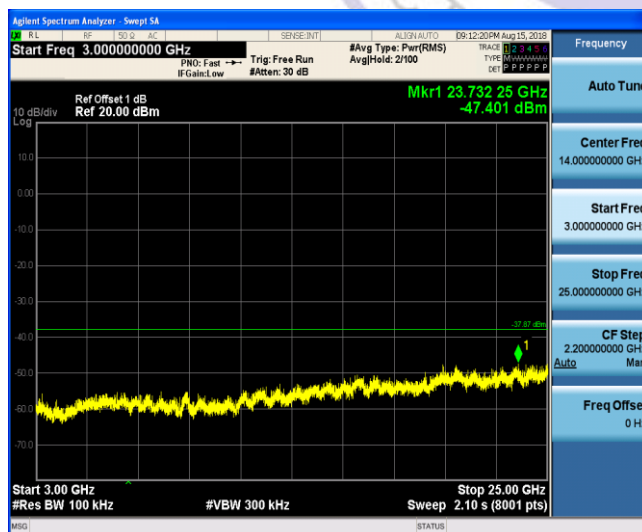
## 802.11n(HT20) CH06



## Reference

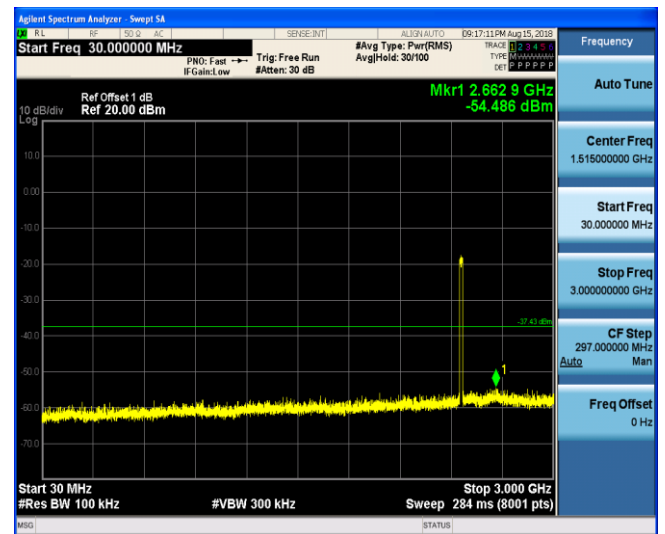
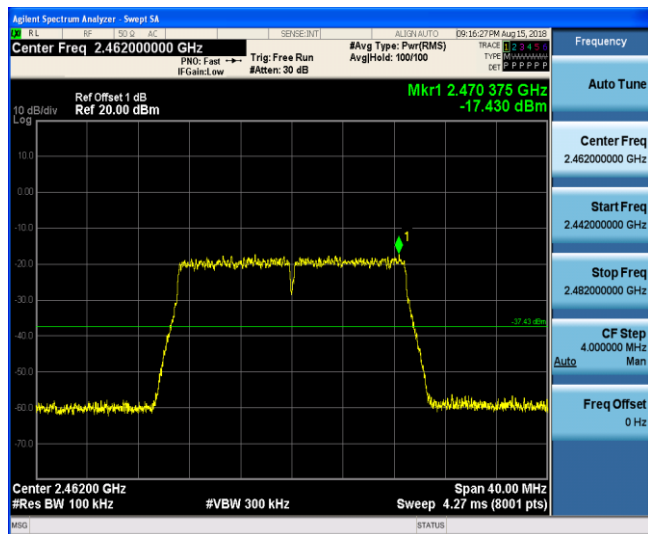
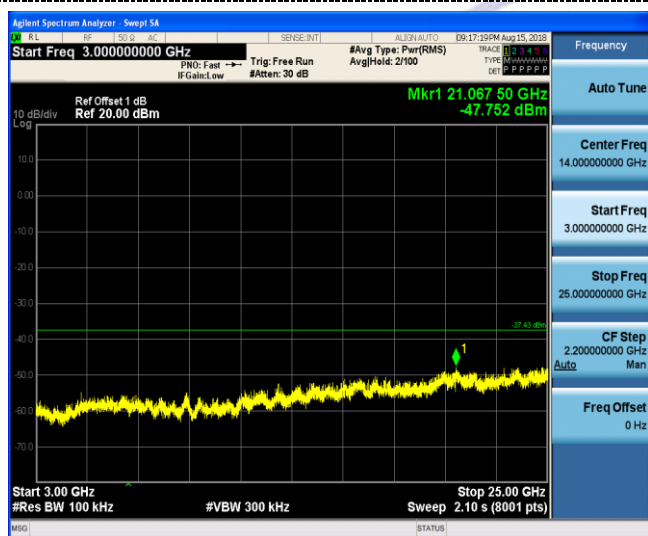


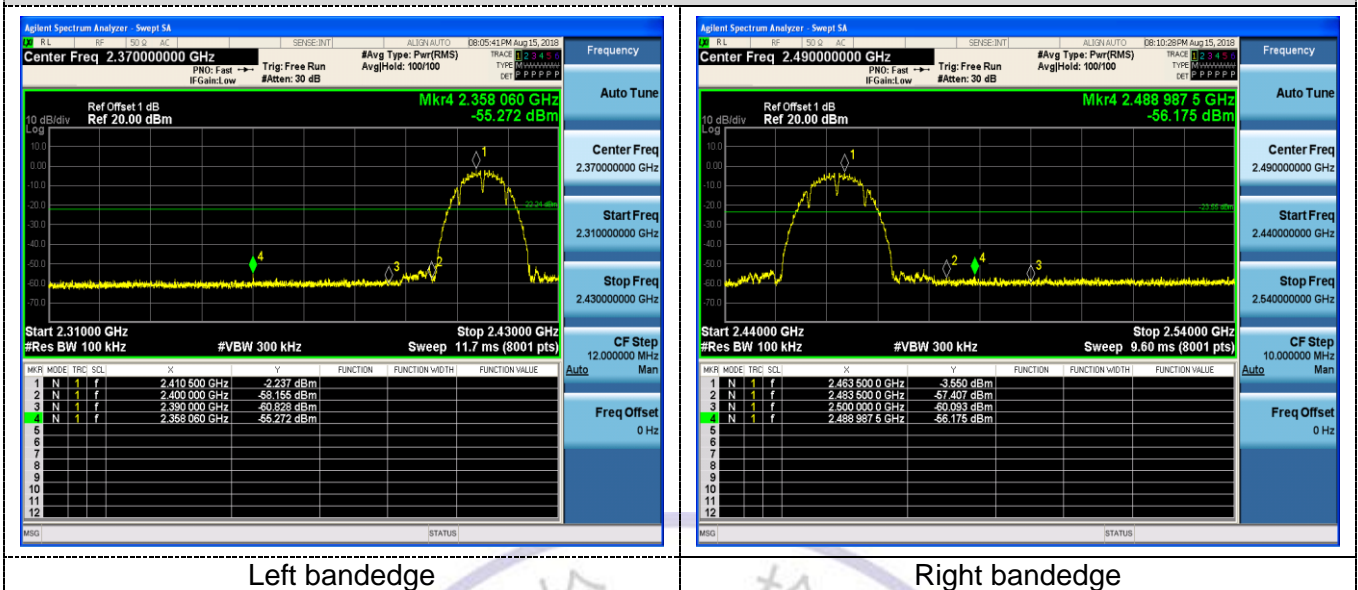
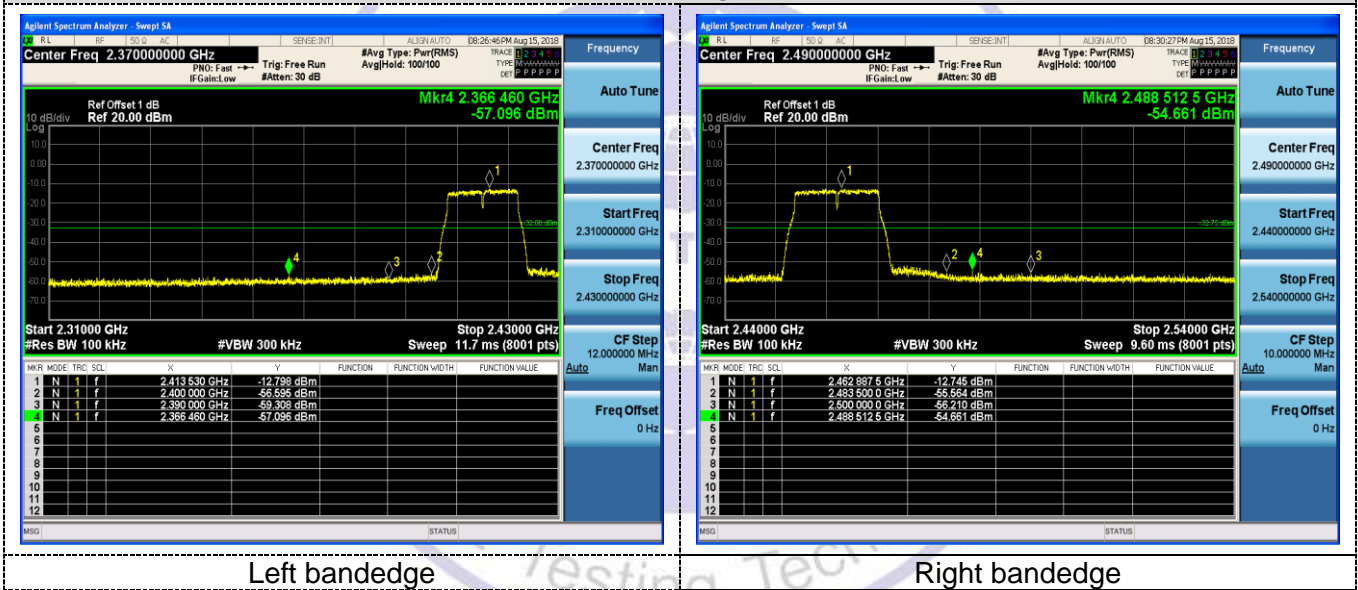
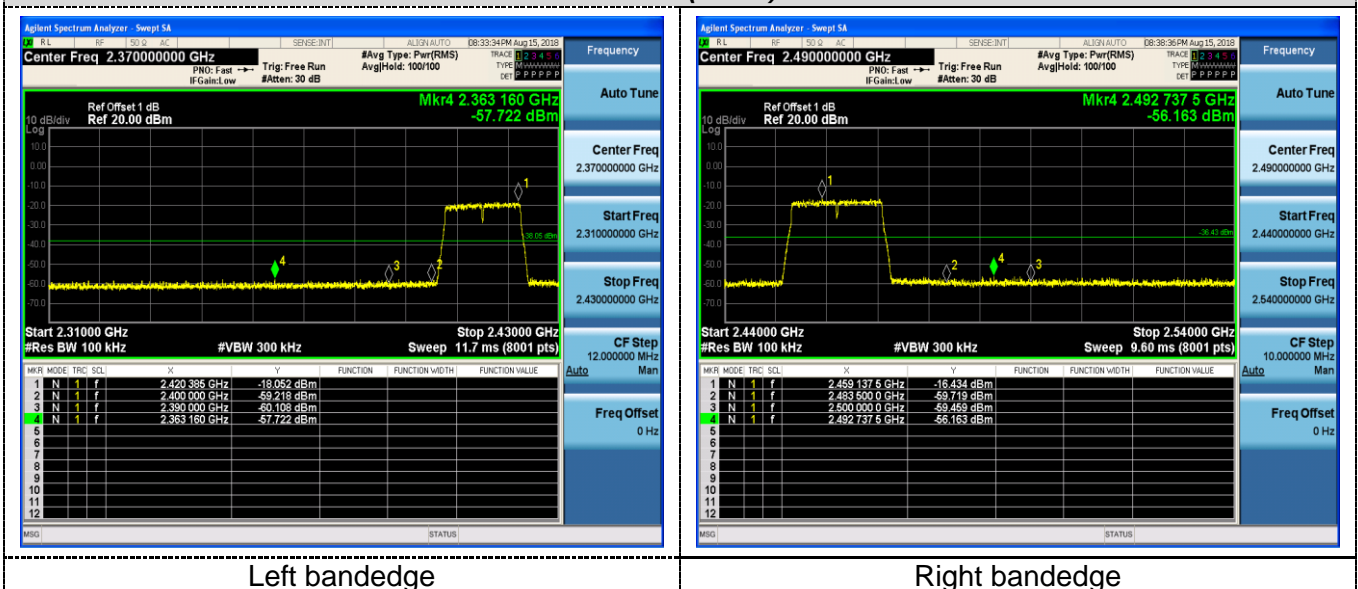
## 30MHz-3GHz



## 3GHz-25GHz

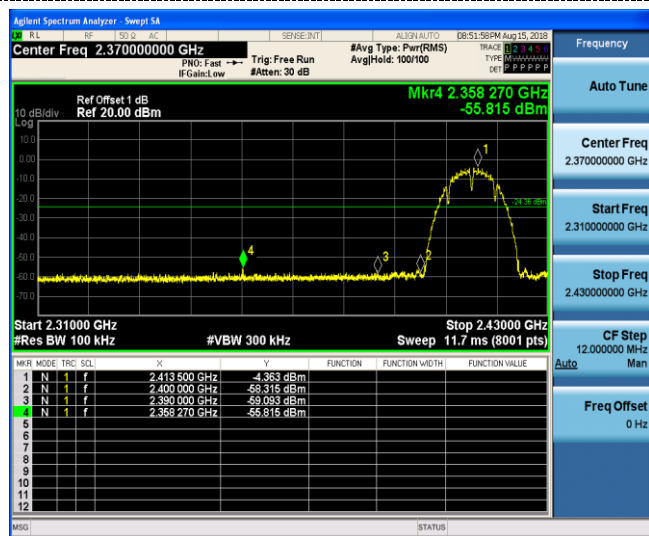
## 3GHz-25GHz

**802.11n(HT20) CH11****Reference****3GHz-25GHz****30MHz-3GHz**

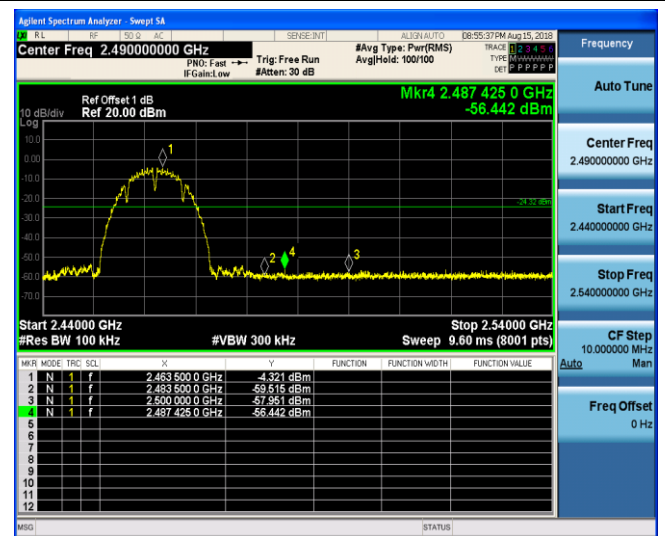
**Band-edge Measurements for RF Conducted Emissions:****Ant1:****802.11b****802.11g****802.11n(HT20)**

Ant2:

## 802.11b

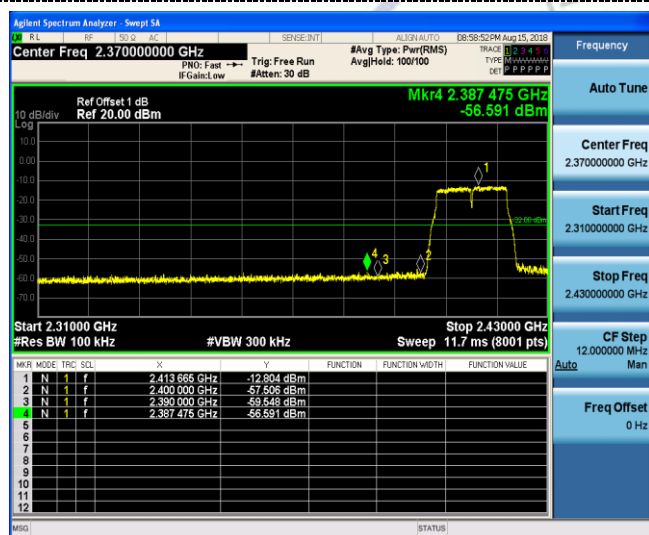


Left bandedge

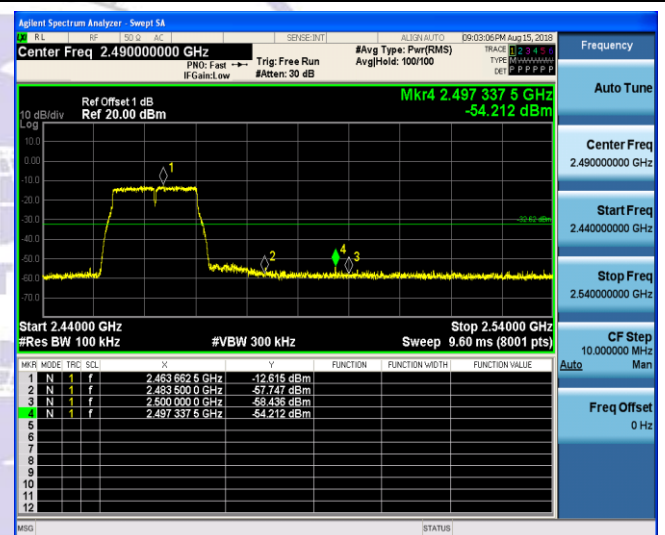


Right bandedge

## 802.11g

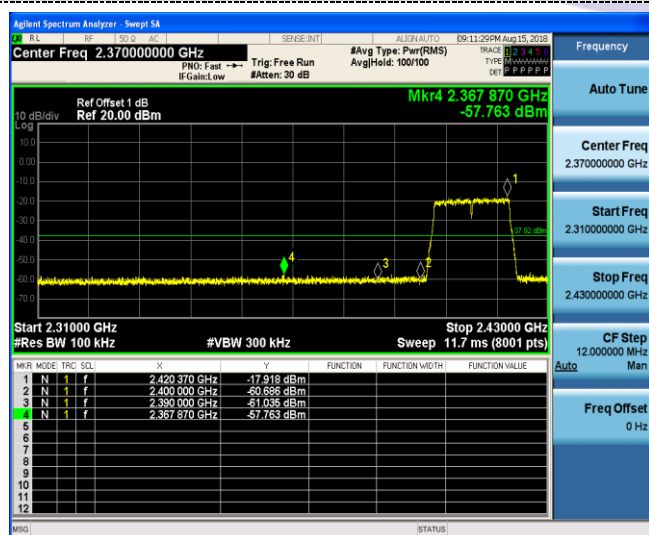


Left bandedge

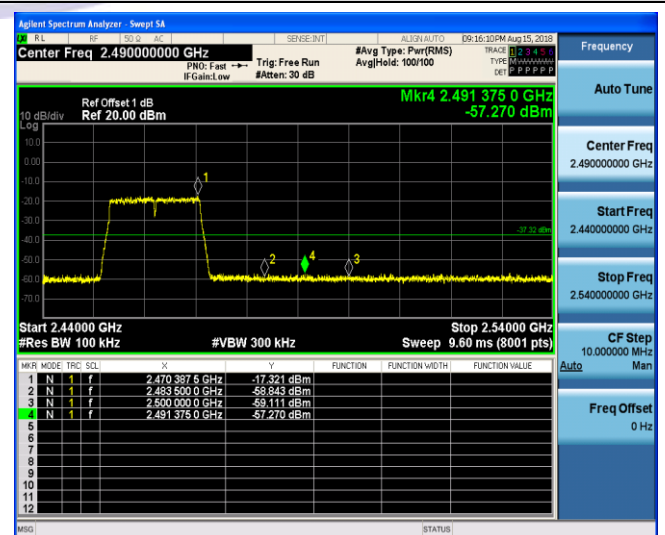


Right bandedge

## 802.11n(HT20)



Left bandedge



Right bandedge

## 4.7. Antenna Requirement

### Standard Applicable

**For intentional device, according to FCC 47 CFR Section 15.203:**

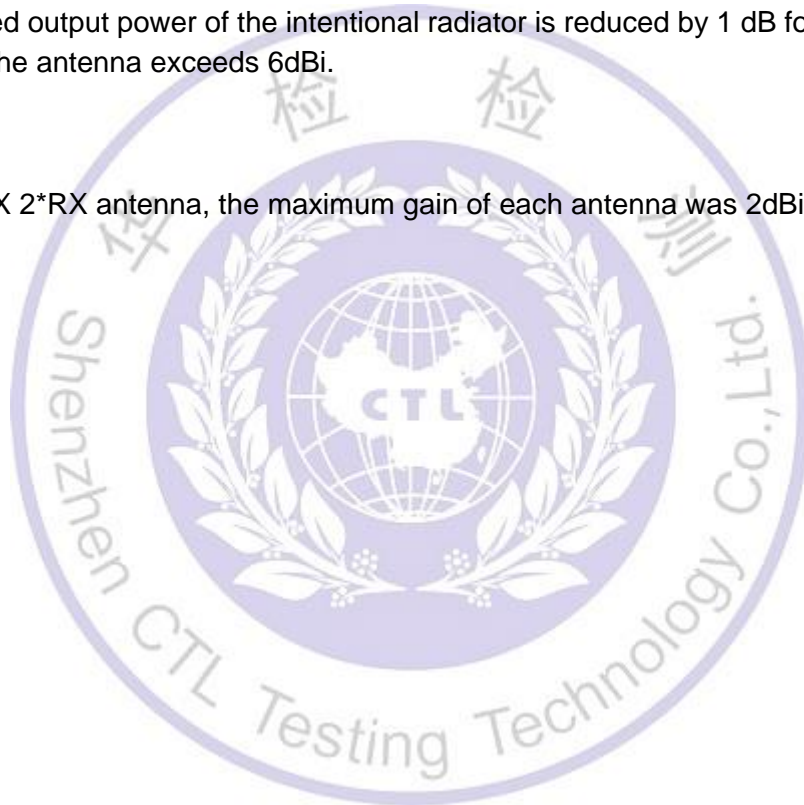
An intentional radiator shall be designed to ensure that no antenna other than that furnished by the responsible party shall be used with the device. The use of a permanently attached antenna or of an antenna that uses a unique coupling to the intentional radiator, the manufacturer may design the unit so that a broken antenna can be replaced by the user, but the use of a standard antenna jack or electrical connector is prohibited

**FCC CFR Title 47 Part 15 Subpart C Section 15.247(c) (1) (I):**

(i) Systems operating in the 2400-2483.5 MHz band that is used exclusively for fixed. Point-to-point operations may employ transmitting antennas with directional gain greater than 6dBi provided the maximum conducted output power of the intentional radiator is reduced by 1 dB for every 3 dB that the directional gain of the antenna exceeds 6dBi.

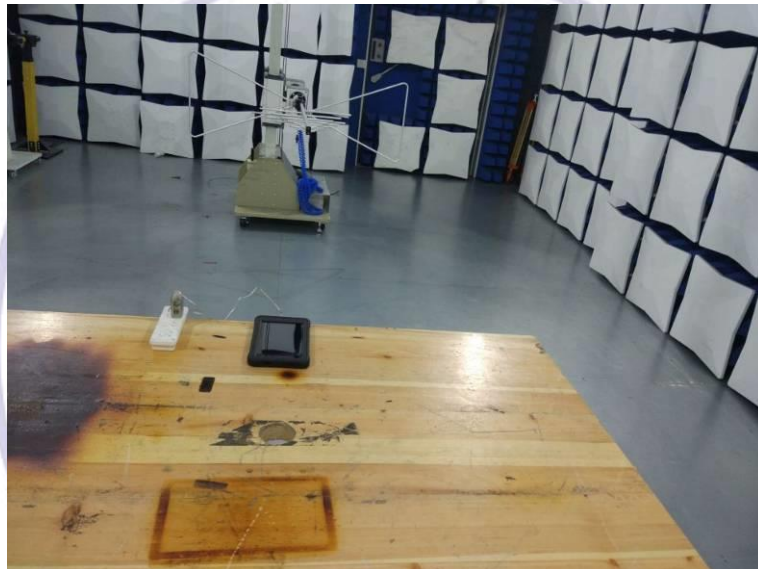
### Test Result:

The EUT used 2\*TX 2\*RX antenna, the maximum gain of each antenna was 2dBi.



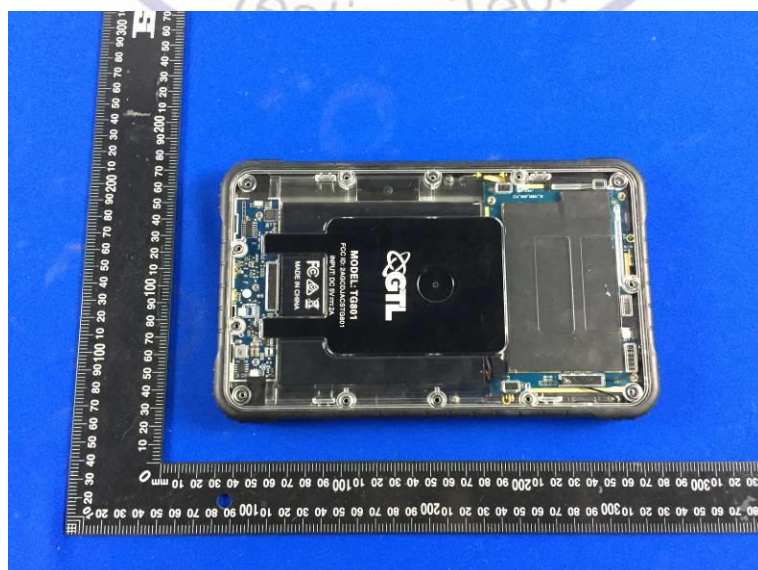
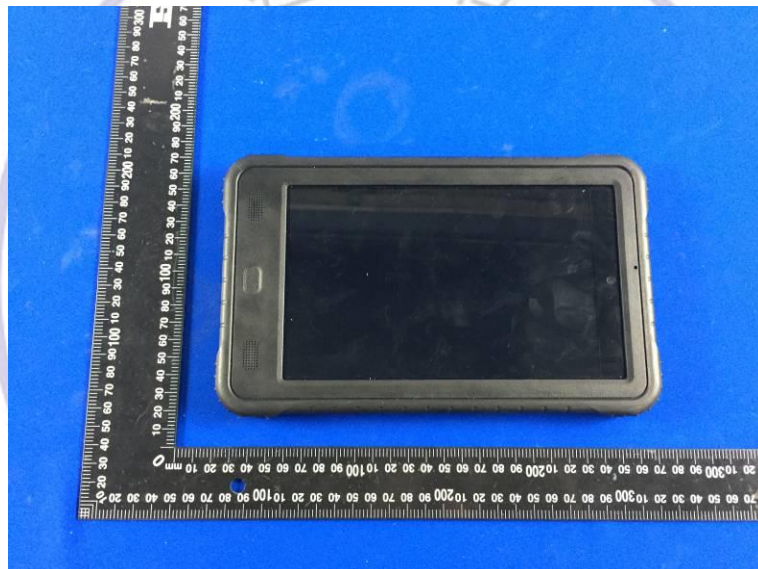
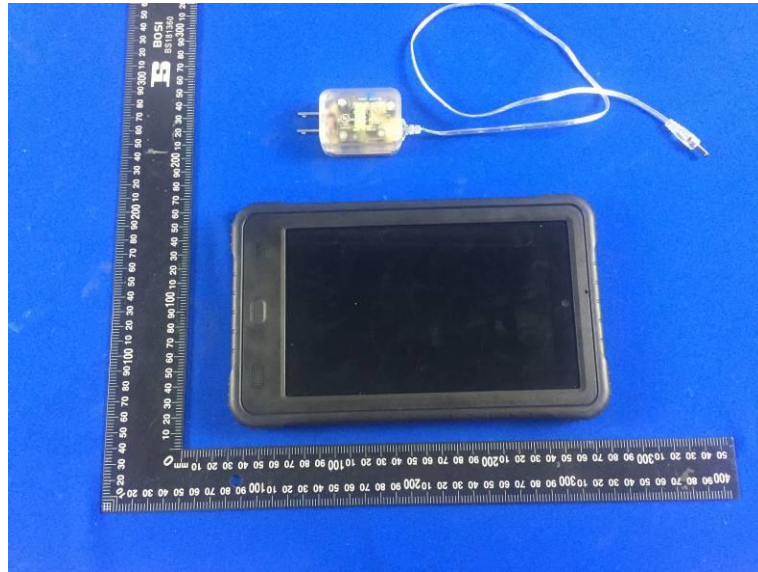


## 5. Test Setup Photos of the EUT

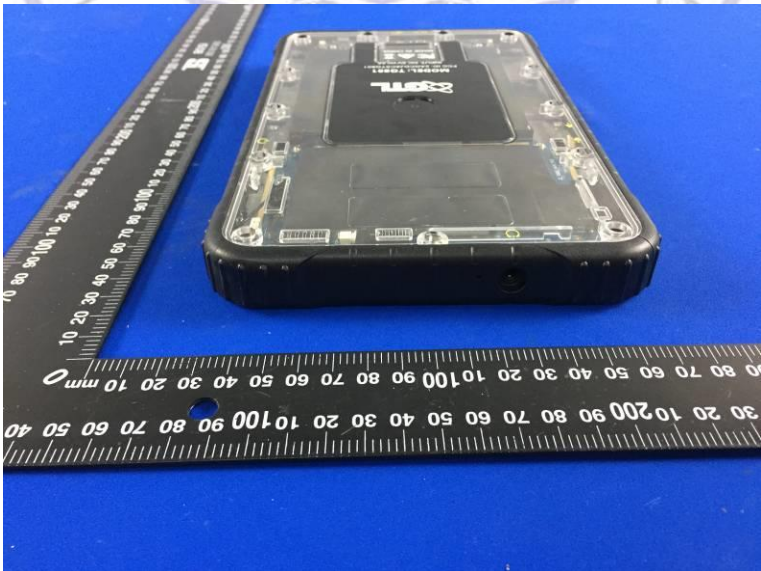
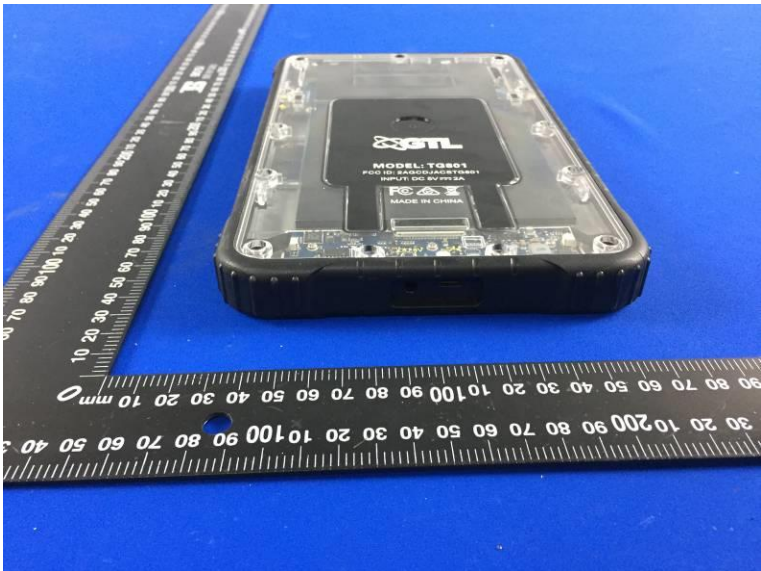


## 6. External and Internal Photos of the EUT

### External Photos of EUT

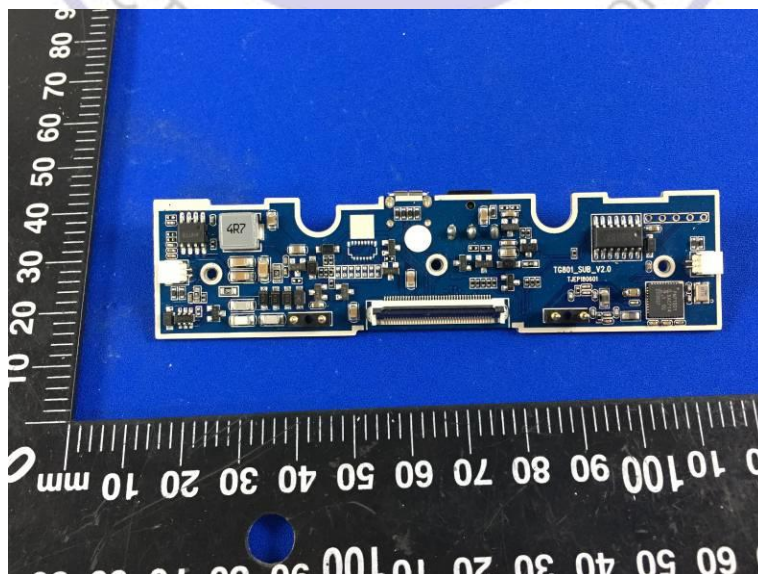
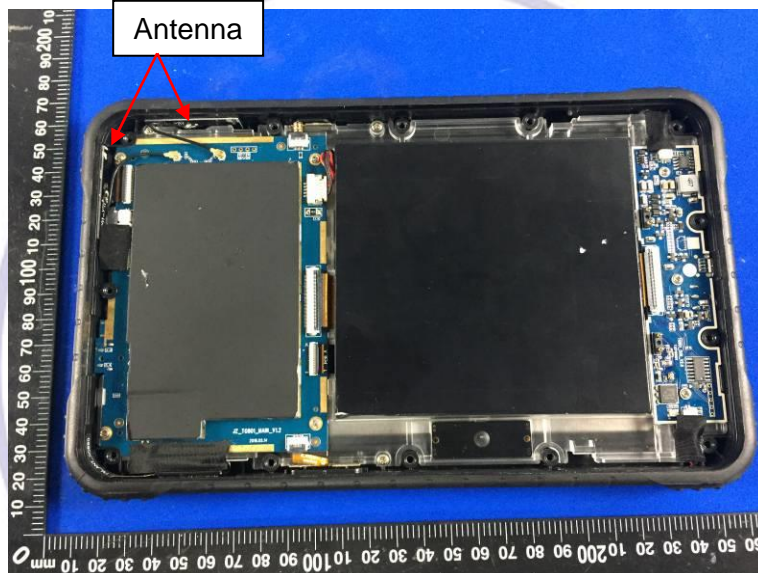
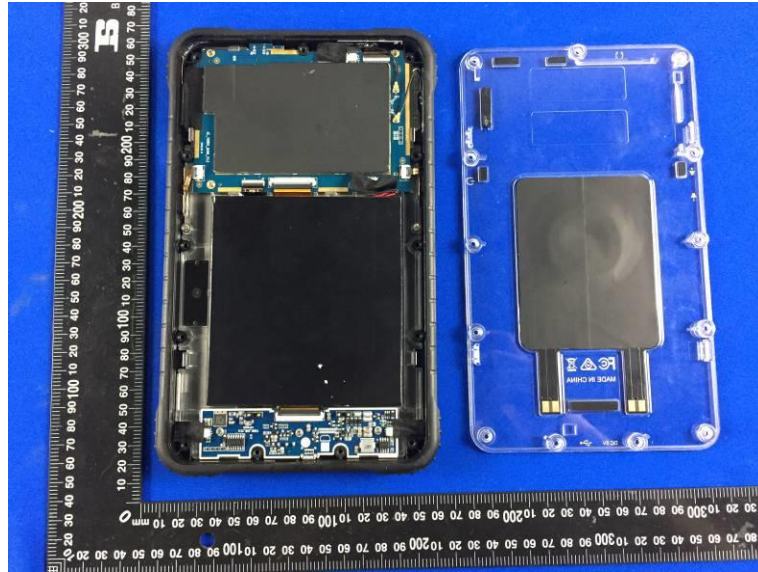




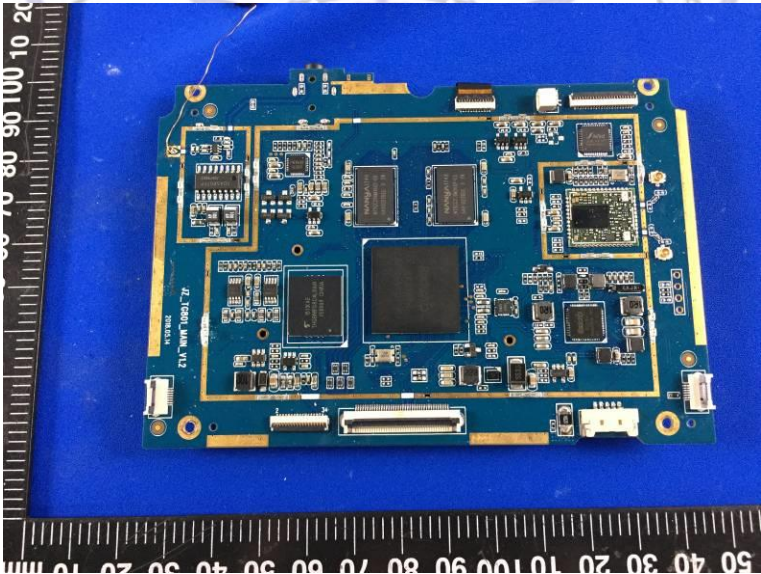
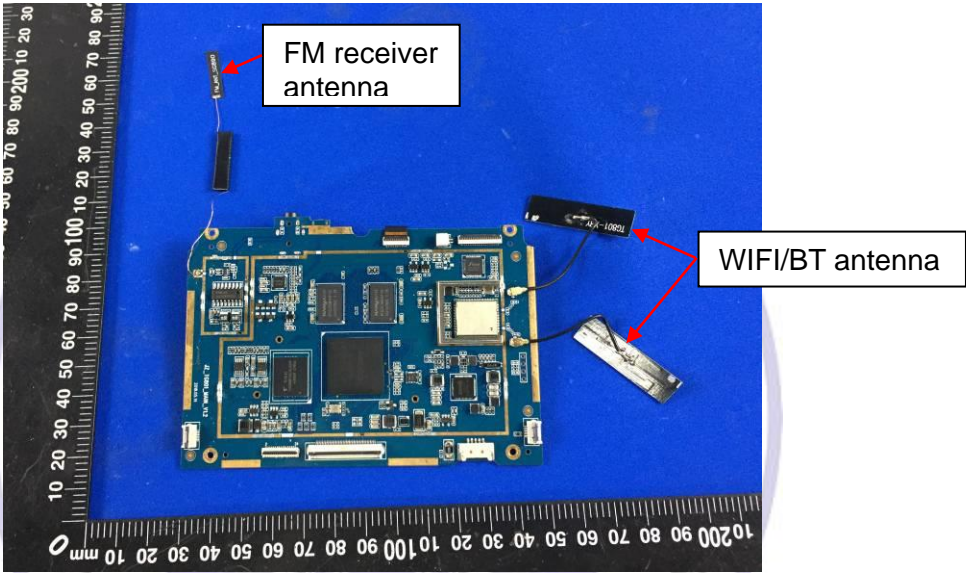
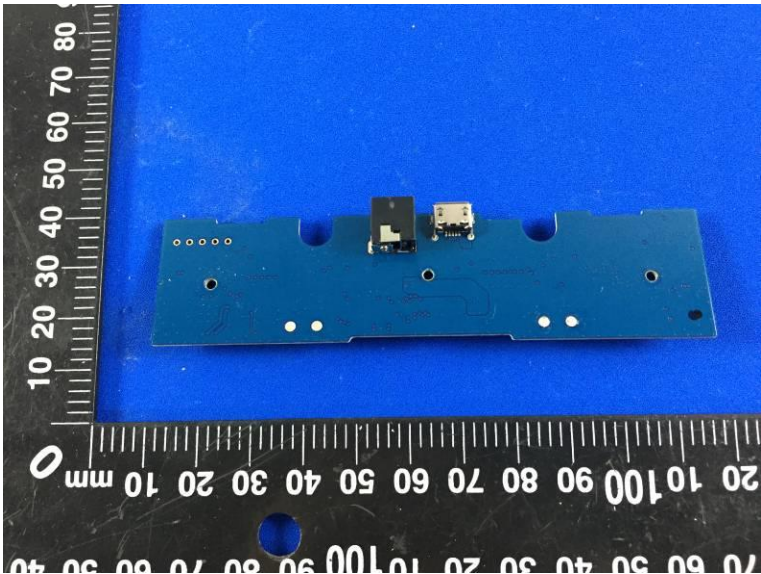


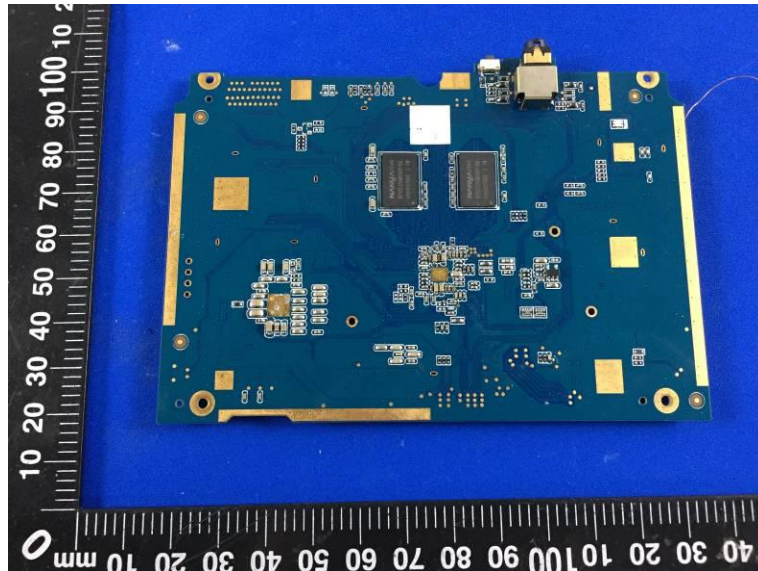




Internal Photos of EUT







\*\*\*\*\* End of Report \*\*\*\*\*

