



Pacific Track, LLC
4630 Campus Dr
Suite 100
Newport Beach, CA 92660

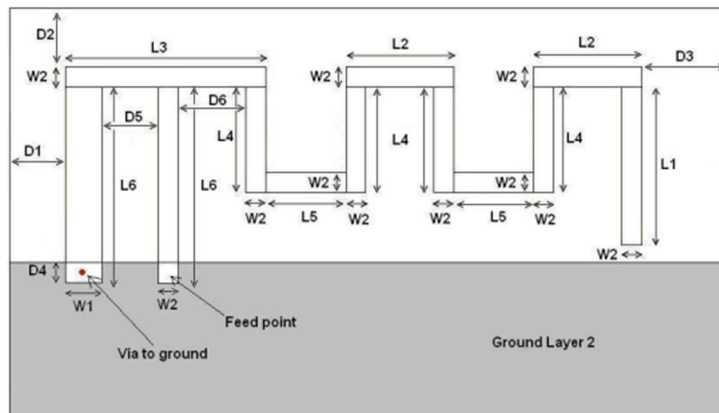
Web: www.pacifictrack.com
Email: admin@pacifictrack.com

PT40-Q Antennas Description

Bluetooth Antenna

The PT40-Q covers the 2.4 GHz ISM band between the frequencies of 2402 MHz and 2480 MHz. The antenna used in the product is a meandered Printed Inverted-F Antenna (PIFA).

Dimensions:

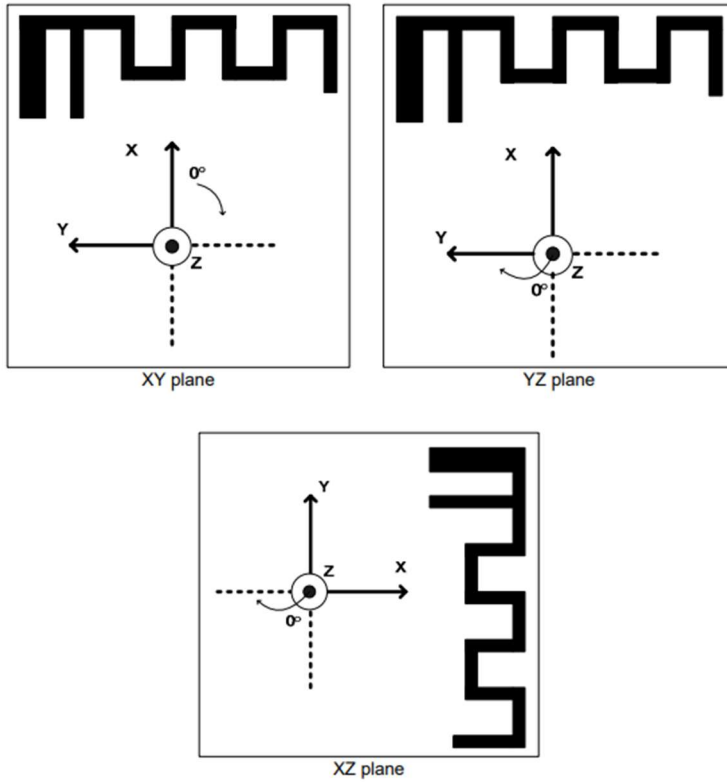


L1	3.94 mm
L2	2.70 mm
L3	5.00 mm
L4	2.64 mm
L5	2.00 mm
L6	4.90 mm
W1	0.90 mm
W2	0.50 mm
D1	0.50 mm
D2	0.30 mm
D3	0.30 mm
D4	0.50 mm
D5	1.40mm
D6	1.70 mm

Characteristics:

The antenna is designed to have a reflection of less than -10 dB across the 2.4 GHz ISM band, when connected to a 50 ohm source.

Reference planes:



The gain was measured as follows:

Gain in XY plane	< 2dBi
Gain in XZ plane	< 2dBi
Gain in YZ plane	< 2dBi

LTE Antenna

The PT40-Q covers the following LTE bands: 2, 4, 5, 12 and 13. The antenna uses stamped metal pieces over a plastic mount. The antenna is permanently attached to the PCB with 2 small screws.

Picture



Antenna Gain

The antenna gain has been determined by using the TRP measurements from an accredited laboratory and extracting the antenna gain from these measurements.

LTE Band	Maximum gain
Band 2	-2.2 dB
Band 4	-2.3 dB
Band 5	-4.8 dB
Band 12	-5.7 dB
Band 13	-5.4 dB