

Instructions for UbiBot wireless multi-sensor device

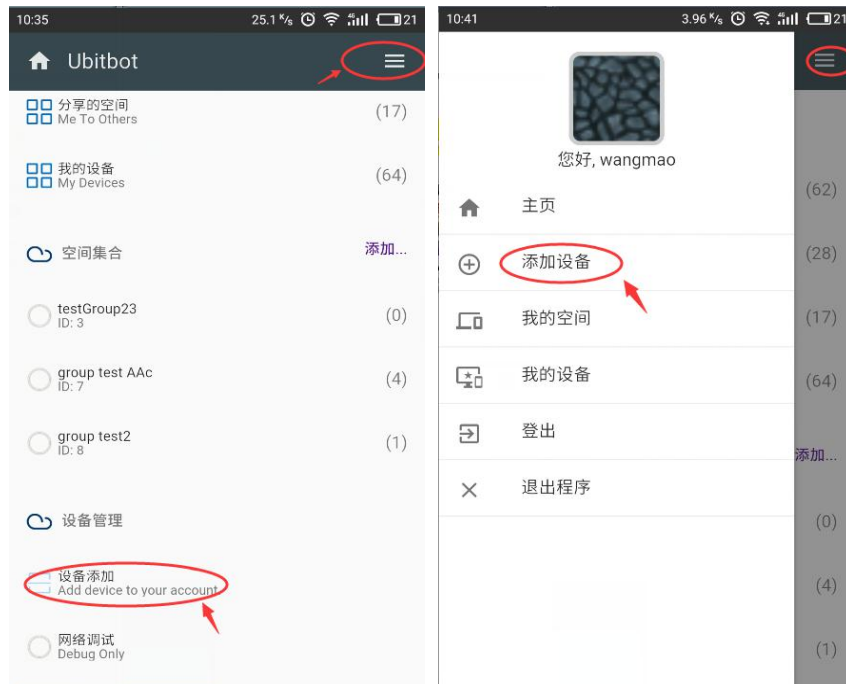
1. **Switch on the device:** press the button for 3 seconds (no more than 8 seconds), it will beep shortly and green light twinkles one time. Then device is switched on.

2. **Start WIFI setting mode:** used for the first time, you need to connect the device with WIFI first. In “OFF” state, press the button for 8 seconds(no more than 15 seconds), it will beep shortly, then green and red light twinkles alternatively. In this mode, you can set WIFI connection in your APP or PC.

Part one: connecting to APP

Step 1: enter the APP in your phone

Step 2: drop down the list, click “add device to your account” to add a new device, see the left picture. Alternatively, click “menu” on the right corner, then choose “add device”, see the right picture



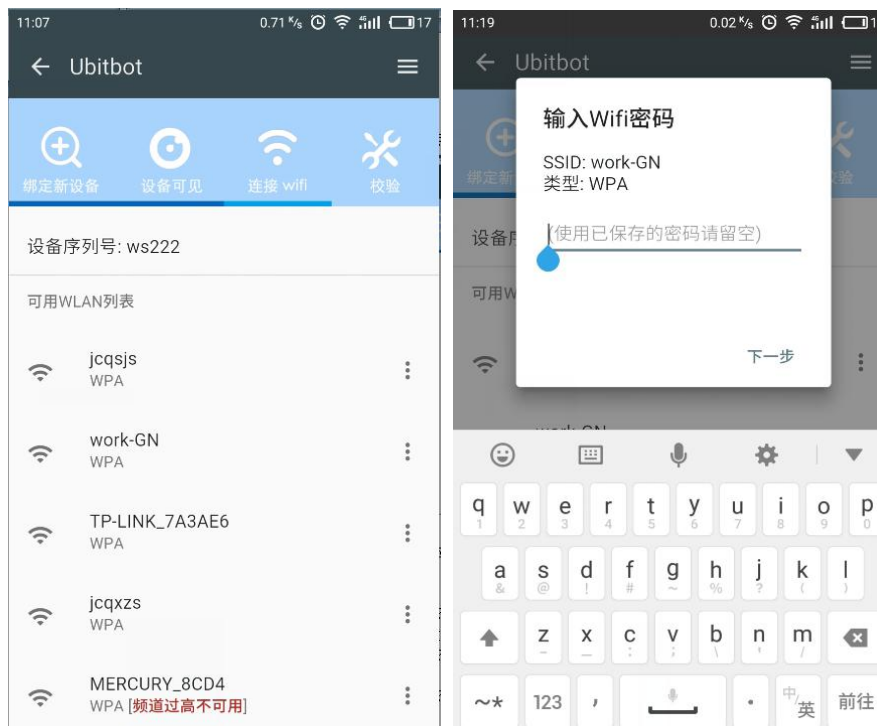
Step 3: type serial number in the box or click “scan” to scan barcode on back of the device. Then click “next step”



Step 4: Click “search for device” and “next step”



Step 5: Choose the WIFI you want to connect, then enter WIFI password. Click “next step”



Step 6: Make sure the information are correct, then click “start connection”.

Finally, pay attention to your device indicator light. Choose the same state on the page to see the result.

If twinkling green light, connection are done.

If constant red light, WIFI password is wrong.

If twinkling red light, information is wrong.



Part 2:connecting to PC

Step 1:Enter the home page, type user name and password in the box, click “log in”

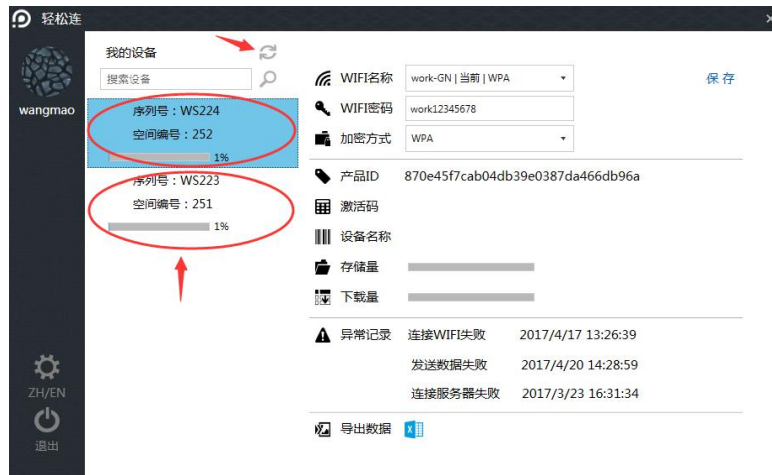


Step 2: Connect device to computer with USB cord, click “done”

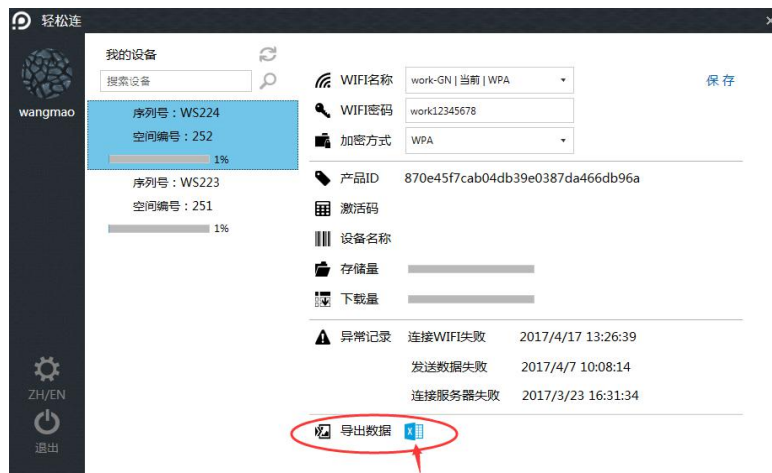


Step 3: Choose your device on the left page, choose WIFI you want to connect to on the right page, type password, then click “save”.

(hint: if you add another device when the first one has been connected, click “refresh” to show new device)



Step 4: Click “export data”to export and save all the data in the device to relevant path in EXCEL format.

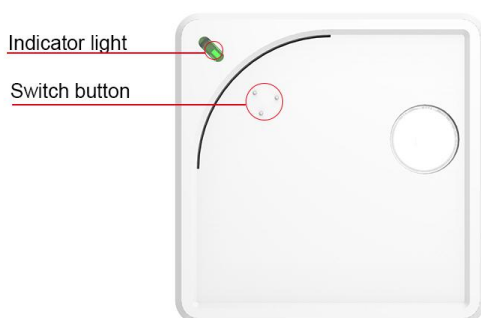


4. **Send data on-demand:** press the button once, when it beeps, and green light twinkles, the data will be sent successfully.

5. **Reset to default settings:** in “OFF” state, press the button for 15 seconds until the red light twinkles. During this process, it beeps three times. Red light twinkling will last about 30 seconds and then enter into WIFI setting mode.

3. **Switch off the device:** press the button more than 3 seconds, it will beep for 2 seconds and red light is on . Release the button then device is switched off.

Tips about how to check the device is on: press the switch button once, if it beeps and green light twinkles, the device is in “ON” state. Otherwise, it is shutdown.



Warn;

This equipment has been tested and found to comply with the limits for a Class B digital device, pursuant to part 15 of the FCC Rules. These limits are designed to provide reasonable protection against harmful interference in a residential installation.

This equipment generates uses and can radiate radio frequency energy and, if not installed and used in accordance with the instructions, may cause harmful interference to radio communications. However, there is no guarantee that interference will not occur in a particular installation. If this equipment does cause harmful interference to radio or television reception, which can be determined by turning the equipment off and on, the user is encouraged to try to correct the interference by one or more of the following measures:

- Reorient or relocate the receiving antenna.
- Increase the separation between the equipment and receiver.
- Connect the equipment into an outlet on a circuit different from that to which the receiver is connected.
- Consult the dealer or an experienced radio/TV technician for help.

This device complies with part 15 of the FCC Rules. Operation is subject to the following two conditions:

- (1) This device may not cause harmful interference, and
- (2) this device must accept any interference received, including interference that may cause undesired operation

Any Changes or modifications not expressly approved by the party responsible for ☐

☐ compliance could void the user's authority to operate the equipment