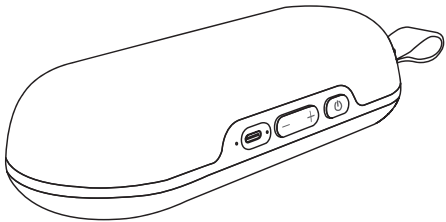


成品尺寸：77x110mm
材质：105G双铜，正反面单色印刷，折页

正面

GEARit



Magnetic Bluetooth Speaker
with RGB Lighting

GI-SPKR-BT-BRICK-BK
User Manual

Table of Contents

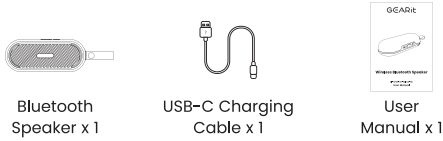
- 1. Package Contents 02
- 2. Product Specification 02
- 3. Basic Functions 03
- 4. Button Operation 04-05
- 5. Charging and Power Saving 06
- 6. TWS Pairing 07
- 7. Indicator Lights 08
- 8. FAQ 09

Thank you for purchasing your new GEARit Magnetic Bluetooth Speaker with RGB Lighting. This user manual will help provide you with all the information needed to get started. Please read this manual carefully before using the product and reference it for later use.

Enjoy your new product.

Live it. Experience it. GEARit.

1. Package Contents

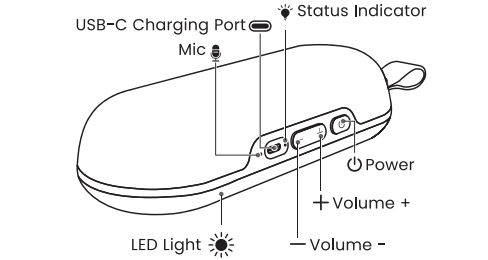


2. Product Specification

Model	GI-SPKR-BT-BRICK-BK
Bluetooth Version	5.3
Battery Capacity	3.7V/2600mAh
Playback Time	5-6 hours (70% volume, LED lighting off) 6-8 hours (50% volume, LED lighting off)
Talk Time	8-10 hours
Charging Time	3-4 hours
Charging Current	5V=1A
Speaker Unit	8W x 2
Product Size	199 x 80 x 47.2mm
Product Weight	501g

-02-

3. Basic Functions



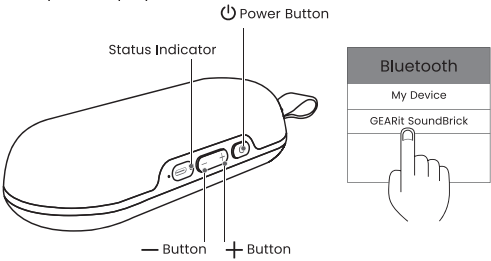
Button	Function	Operation Instruction
	Power ON / OFF	Long press 2s.
	Play / Pause	When playing media, short press.
	Answer / End Call	Short press.
	Reject Incoming Call	Short press 3 times.
	Switch Call to Phone	Short press 3 times.
	TWS Connect / Disconnect	Short press 3 times.
	Increase Volume	Short press.
	Skip Track	Long press 2s.
	Decrease Volume	Short press.
	Previous Track	Long press 2s.
	Disconnect Bluetooth Connection	Short press simultaneously.
	Turn ON/OFF SOS Light	Long press 2s simultaneously.

-03-

4. Button Operation

1. Power ON/OFF
Long press “” button 2s to power on/off.

2. Bluetooth Mode
Long press “” button 2s to power on with prompt tone, speaker will enter into bluetooth pairing mode, the blue status indicator will flash. Choose “GEARit SoundBrick” in your bluetooth list, a tone will be heard once connected successfully, and the blue status indicator will be solid on. Now, you can play music.



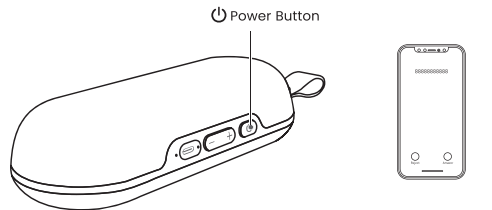
3. Volume Control / Media Control
Short press “” button once for volume up, there will be prompt tone when up to maximum volume. Long press “” button 2s for next track. Short press “” button once for volume down. Long press “” button 2s for previous track.

-04-

4. Button Operation

4. LED Lighting
After power on, short press “” button twice to switch LED lighting mode (Mode 1, Mode 2, Mode 3, Mode 4, Mode 5, Power OFF).
Long press both “” + “” buttons 3s at the same time to turn ON/OFF SOS lighting.

5. Calling
For incoming call, short press “” button to answer. Short press “” button 3 times to hang up. During a call, short press “” button to hang up. Short press “” button 3 times to switch the call to your mobile device. (during a call)

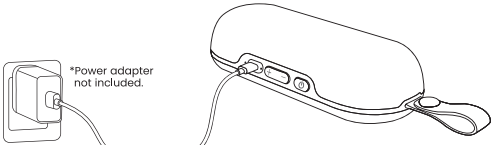


*This speaker supports mobile phones, tablets, PCs etc. Here in this User Manual, the illustrations are based on mobile phones.

-05-

5. Charging and Power Saving

Charge when you hear the low battery prompt tone or see the indicator flash red. The red status indicator will stay on during charging and turn off when fully charged.
Note: Use the supplied USB-C charging cable with an output source 5V/2A (or above).

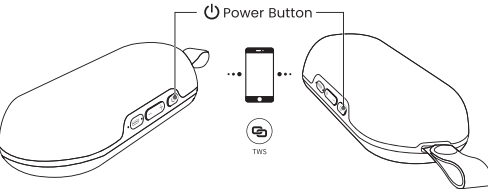


The speaker will power off automatically to save battery when there is no connection after 10 minutes.

-06-

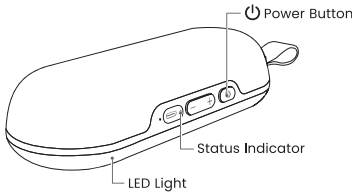
6. TWS Pairing

- Power ON both devices with no devices connected via Bluetooth.
- Short press “” button 3 times on any speaker to turn on the TWS function. You will hear a prompt tone and the status indicator will flash blue.
- Short press “” button 3 times on the second speaker.
- When paired successfully you will hear a tone and the status indicator of the master speaker will flash while the status indicator of the slave speaker will be solid blue.
- Both speakers are now connected and you can connect via your phone.



-07-

7. Indicator Lights



LED	Total 5 LED Lighting Modes
	Power ON / TWS: Blue Solid
	Low Battery: Red Flashing
	Charging: Red Solid
	Fully Charged: Light Off

-08-

8. FAQ

- Q: What if there is noise or discontinuous sound during playing?
A: The speaker can be normally used within 10m line of sight. If it is beyond 10m or with obstruction, there might be noise or discontinuous sound.
- Q: Why does the speaker power off automatically after powering on without any operation?
A: When there is no bluetooth pairing within 10 minutes, the speaker will shut down automatically to reduce power consumption.
- Q: Why isn't the speaker connecting to the once-paired cellphone?
A: First, remove the speaker's paired name from the cellphone's Bluetooth list and then restart pairing.
- Q: Why can't the speaker be powered on or used normally?
A: Please charge it for some time, then long press power on button 10-30s to reset.

- Important safety instructions:
- Do not disassemble or repair this speaker, otherwise it may cause product damage or personal injury.
 - Do not use it in dusty, humid, dry, and high-temperature environments.
 - Do not place this product near a heat source, or a place within direct sunlight, a lot of dust, or cause mechanical vibration.
 - In order to reduce the risk of fire, please do not cover this product with newspapers, tablecloths, curtains etc., during use.
 - If the product has a waterproof feature, please do not exceed the nominal parameter range when using it.
 - When the product is damaged, (such as the power cord or plug is damaged, liquid enters or objects fall into the device, unable to operate normally or falls), it must be repaired.
 - When the product is fully charged, do not connect it to the charger for further long time charging.
 - The maximum ambient temperature should not exceed 104°F/40°C.

-09-

- Notes:
- Please read this manual carefully before use and keep it properly.
 - Before the first use, please fully charge the product.
 - Please use a certified adapter that has passed the national safety certification.
 - If you do not use the product for a long time, be sure to charge it once a month to maintain its performance.
 - Do not use this product in an extremely cold or hot environment, such as temperature beyond the range of 41°F-95°F/5°C-35°C. If it is used beyond the above range, the product may stop automatically to protect the internal circuit.
 - When charging in a high temperature environment, the product may automatically stop charging to protect the battery. At this time, the charging indicator will flash quickly to indicate that the charging environmental temperature or the product internal temperature is too high.
 - Storage environment temperature: 23°F-95°F/-5-35°C RH<70% (recommended 77°F/25°C±5).

GEARit LIMITED WARRANTY

Warranty Coverage:
We stand behind our products with confidence, offering warranties designed to give you peace of mind and a worry-free experience. Our commitment covers most GEARit products with specific warranty periods based on product type such as cables, cases, wall chargers, and more. Either way, you're protected from defects in materials and workmanship.

• Speakers (Bluetooth Products): 24 Months
30-Day Money-Back Guarantee:
You may return undamaged products within 30 days for a full refund. Products must include all accessories and original packaging. Shipping costs for non-quality-related returns are the responsibility of the buyer.

Replacement Warranty:
If a defect arises within the warranty period, GEARit will repair, replace, or issue a credit for the product. Repaired or replacement products are covered for 90 days or the remainder of the original warranty, whichever is longer.

Need Assistance?
For more information or to file a warranty claim, please visit GEARit's Warranty Support.
(<https://www.gearit.com/pages/warranty-information>)
(866) 686-1800
support@gearit.com
Mon – Fri: 9:00 AM – 5:30 PM (PST)
www.gearit.com

FCC Compliance Statement
This equipment has been tested and found to comply with the limits for a Class B digital device, pursuant to Part 15 of the FCC Rules. These limits are designed to provide reasonable protection against harmful interference in a residential installation. This equipment generates, uses, and can radiate radio frequency energy and, if not installed and used in accordance with the instructions, may cause harmful interference to radio communications. However, there is no guarantee that interference will not occur in a particular installation. If this equipment does cause harmful interference to radio or television reception, which can be determined by turning the equipment off and on, the user is encouraged to try to correct the interference by one or more of the following measures:

Reorient or relocate the receiving antenna.
Increase the separation between the equipment and receiver.
Connect the equipment into an outlet on a circuit different from that to which the receiver is connected.
Consult the dealer or an experienced radio/TV technician for help.
Changes or modifications not expressly approved by the party responsible for compliance could void the user's authority to operate the equipment.

This device complies with Part 15 of the FCC Rules. Operation is subject to the following two conditions:
(1) This device may not cause harmful interference.
(2) This device must accept any interference received, including interference that may cause undesired operation.

WARNING: This product can expose you to chemicals known to the State of California to cause cancer. For more information, go to www.P65Warnings.ca.gov.

反面