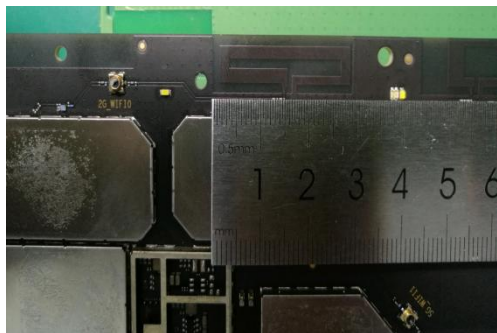
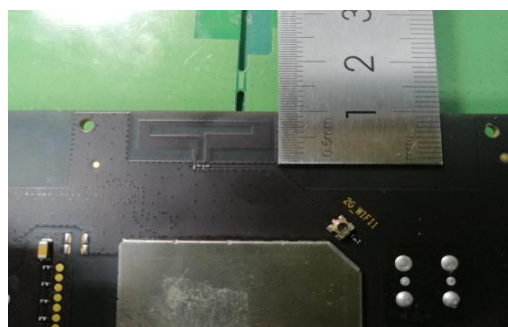
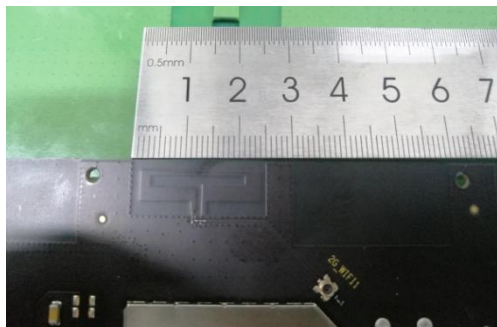


## Wifi Antenna picture

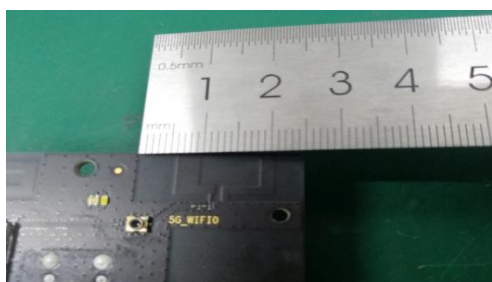
2.4G Wifi 0



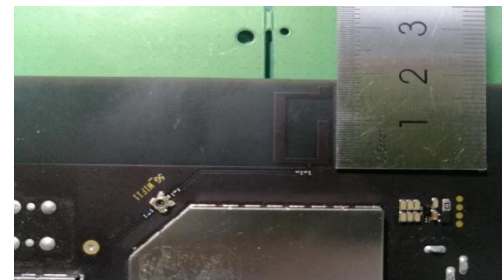
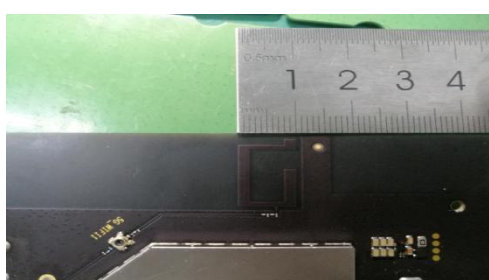
2.4G Wifi 1



5.8G Wifi 0



5.8G Wifi 1



MF296C has two 2.4G Wifi antennas and two 5.8G Wifi antennas. In order to increase the isolation between antennas, 2.4G Wifi antenna and 5.8G Wifi antenna are set alternately (as shown in the figure above). After the machine is turned on, the four Wifi antennas work simultaneously. Through simulation and debugging, the pattern of Wifi antenna can complement each other in the horizontal direction, so as to realize the overall coverage of Wifi signal in the horizontal direction.