

# TN400 Bluetooth Antenna Test Report

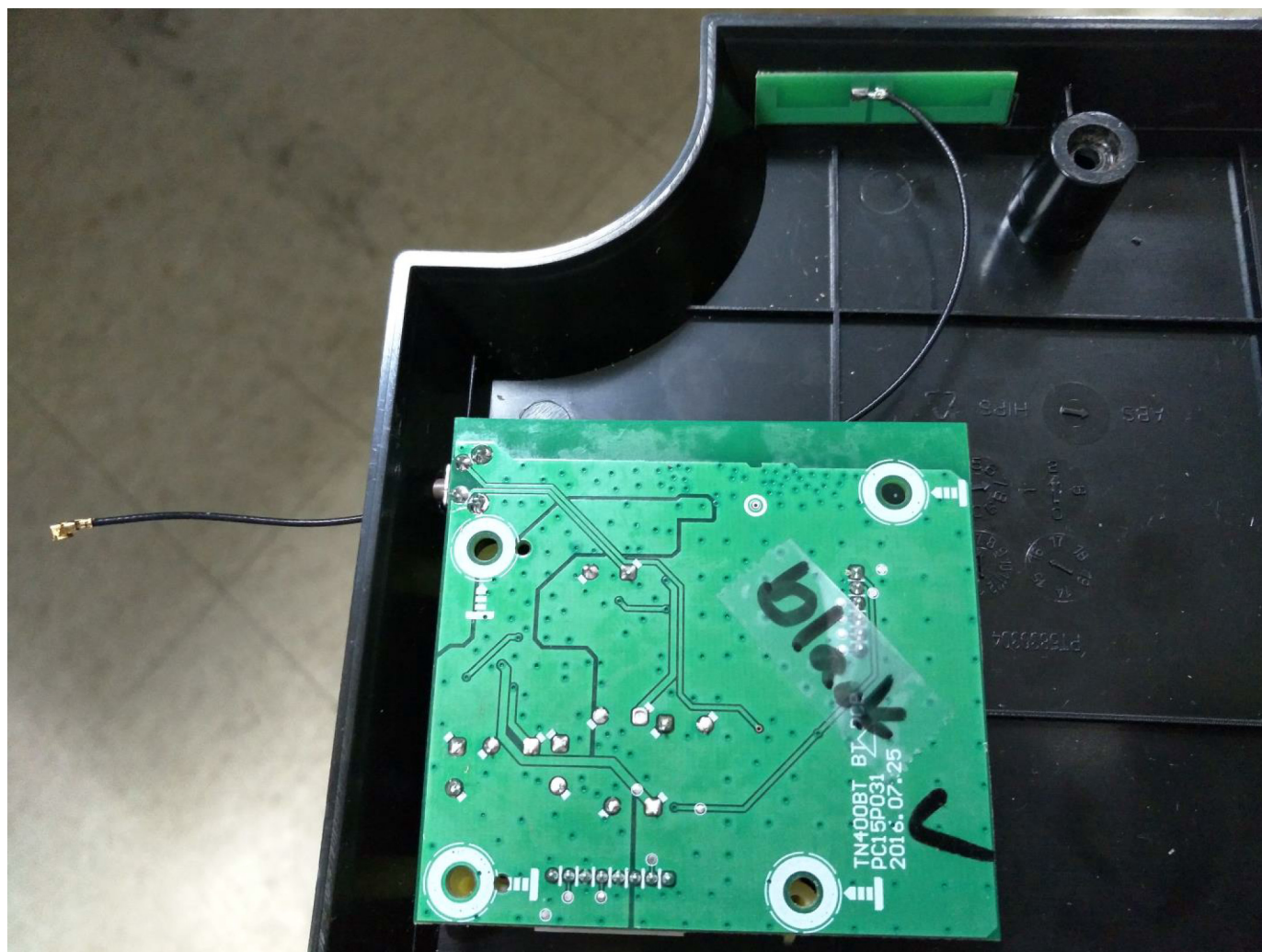
## *EM12 Antenna*

天線型號: WF-EM-1510-0067-A(WF0EM12-I080)



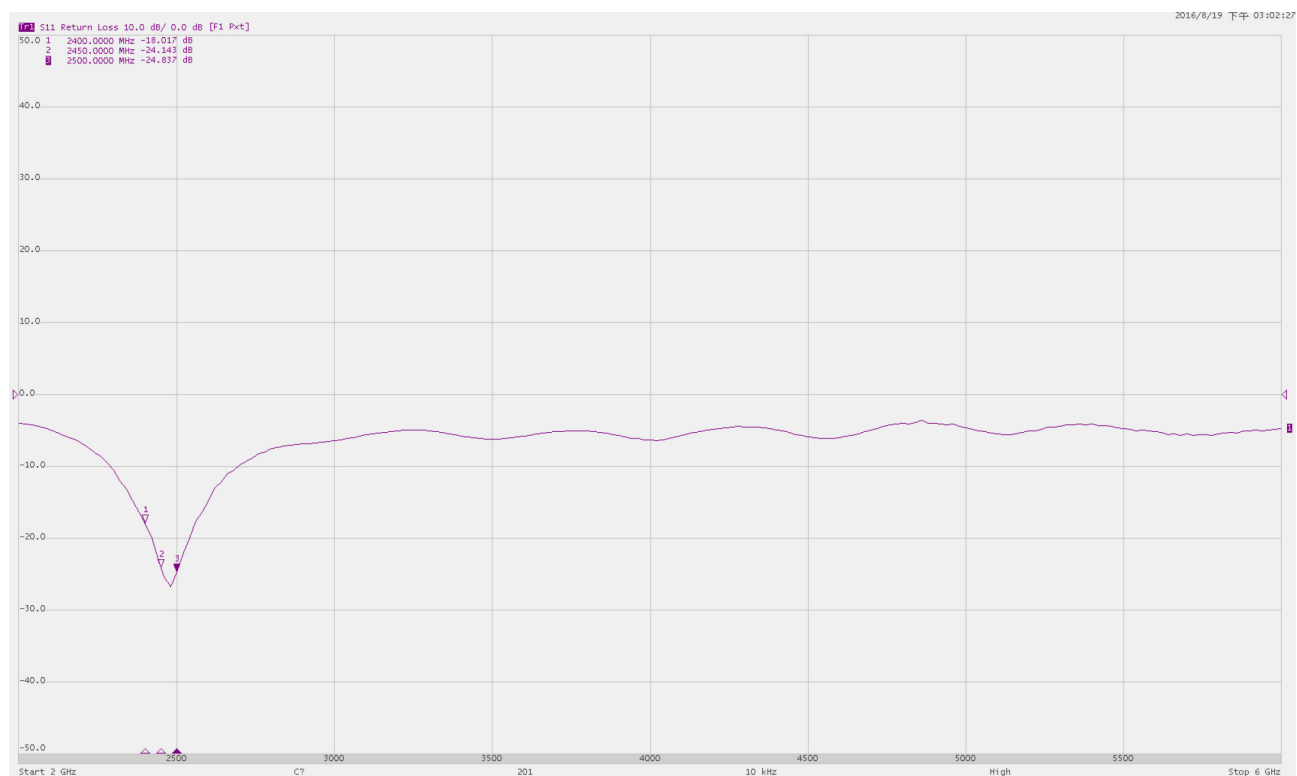
## 1. Antenna spec

### EM12 Antenna

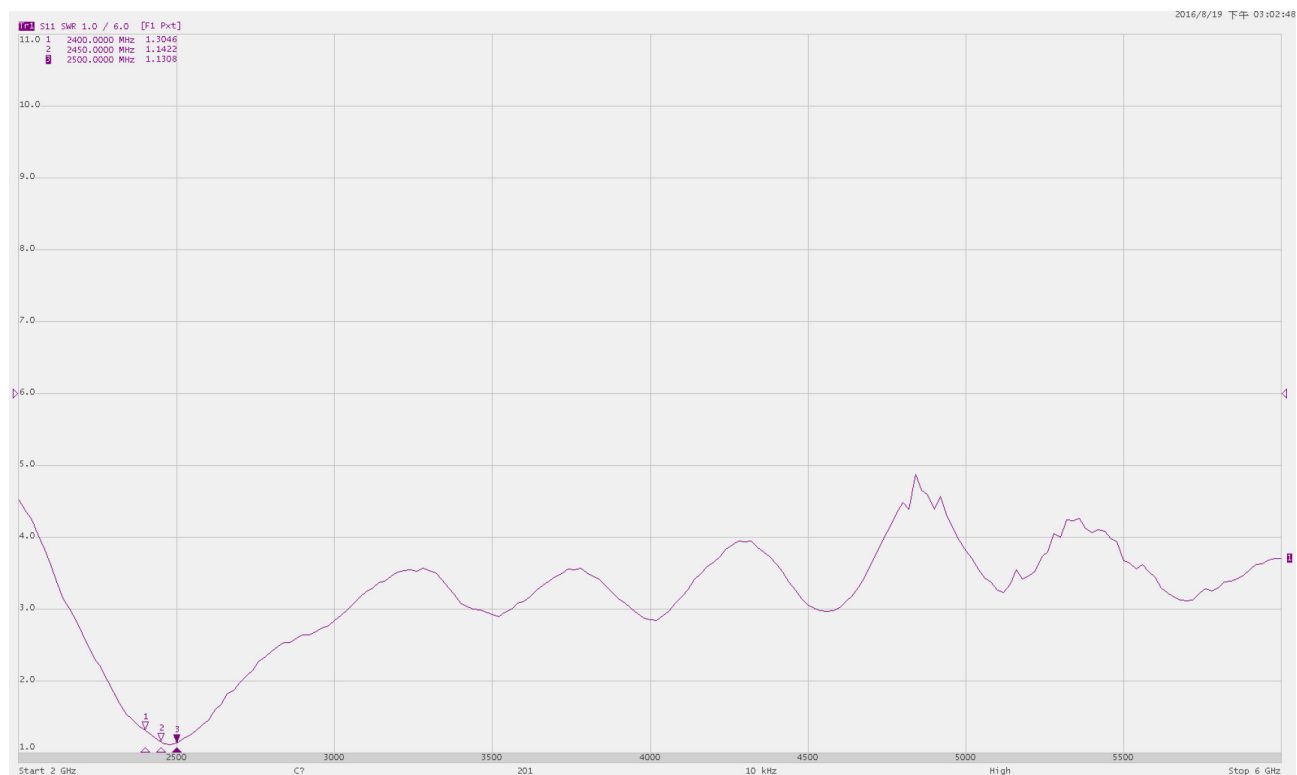


2. Reference(S11&VSWR)

Return loss

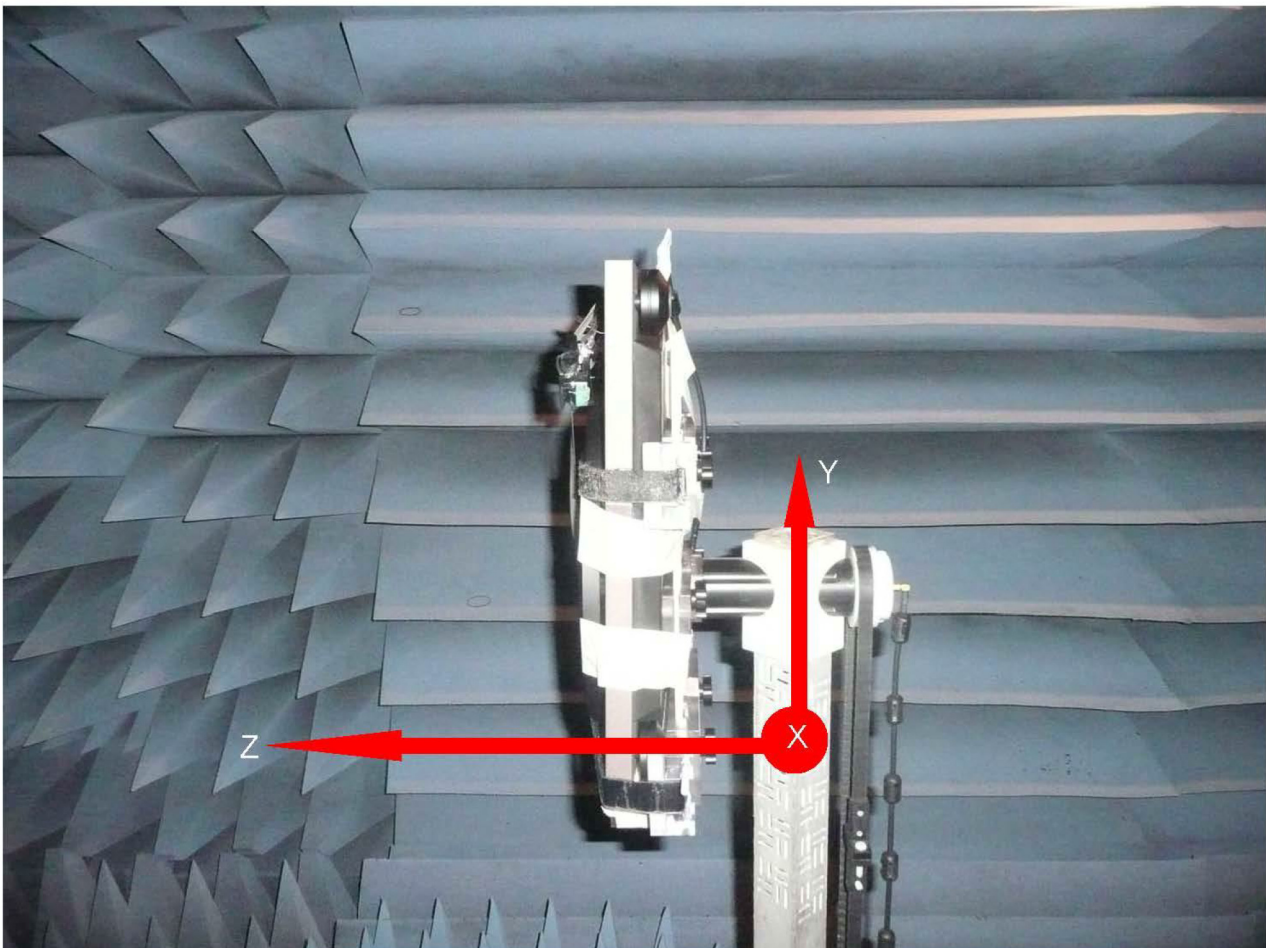
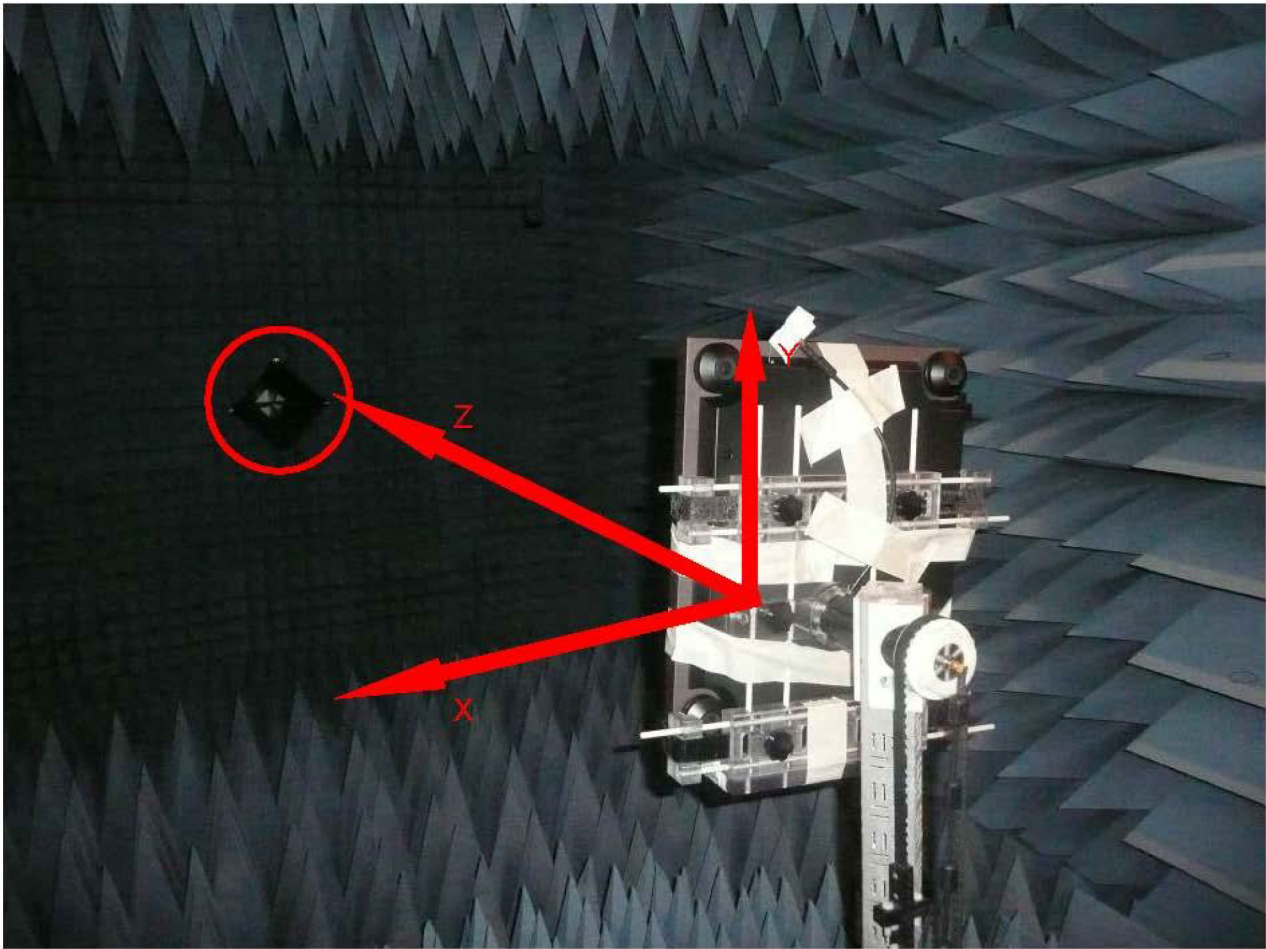


VSWR





### 3. Test Set-up



## 4. Chamber

Test Date	2016/8/19		
Trade Name			
App.No			
Model Name			
Test Mode Free Space & Talking Position			
Communication System			
Channel	2400	2450	2500
<b>Note</b>	TN400-3		
Ant. Port Input Pwr. (dBm)	0	0	0
Tot. Rad. Pwr. (dBm)	-2.70407	-2.59269	-2.86766
Peak EIRP (dBm)	2.31176	1.45367	1.2694
Directivity (dBi)	5.01583	4.04635	4.13706
Efficiency (dB)	-2.70407	-2.59269	-2.86766
Efficiency (%)	53.6529	55.0467	51.6695
Gain (dBi)	2.31176	1.45367	1.2694

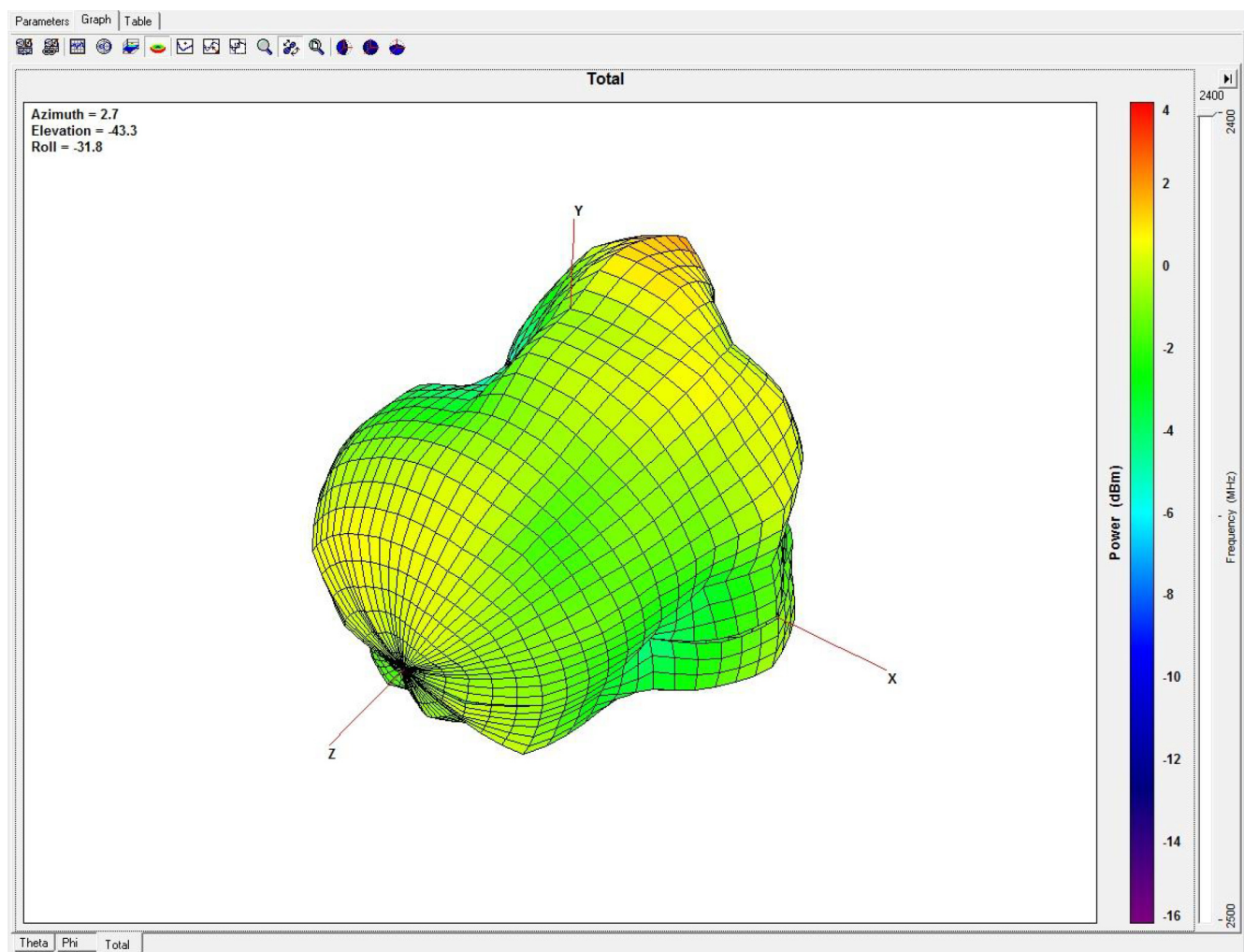
Job No.:160819-2400

Date:2016-08-19

Time:15:32

Tested by: John

Center freq.(MHz): : 2400





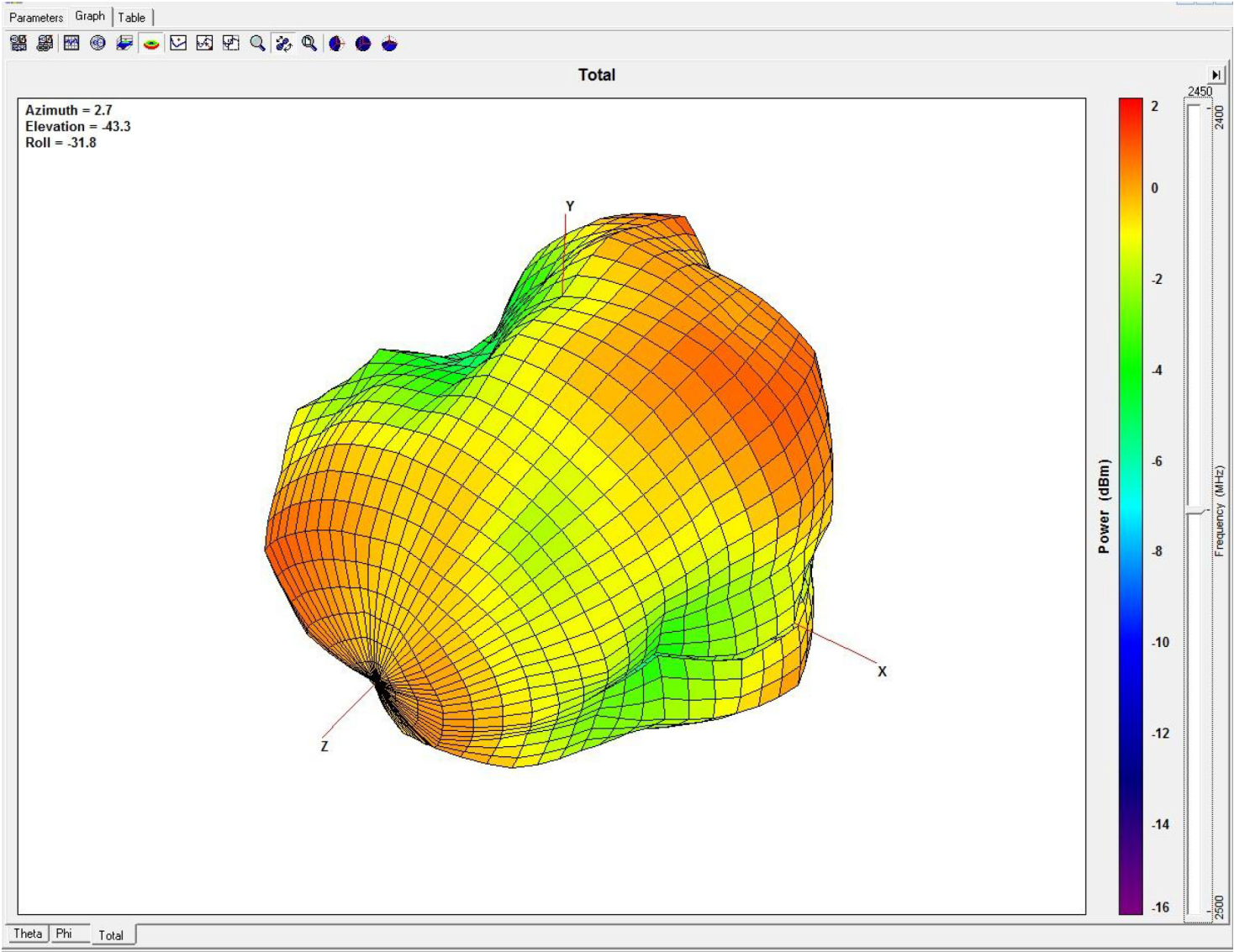
Job No.:160819-2450

Date:2016-08-19

Time:15:32

Tested by: John

Center freq.(MHz): : 2450



Job No.:160819-2500

Date:2016-08-19

Time:15:32

Tested by: John

Center freq.(MHz): : 2500

