

Date: 3/9/2017

Re: Model 3300 LATITUDE™ Programming System: Internal Photos

The Guidant Corporation (a wholly owned subsidiary of Boston Scientific Corporation doing business as Boston Scientific Cardiac Rhythm Management) Model 3300 LATITUDE™ Programming System is a programmer/recorder/monitor (PRM) for BSC cardiac rhythm implantable pulse generators such as pacemakers and defibrillators. The LATITUDE™ Programming System is used by trained medical professionals in hospitals and clinics during CRM device implantation and follow-up procedures.

The following are internal photos of the Model 3300 LATITUDE™ Programming System.

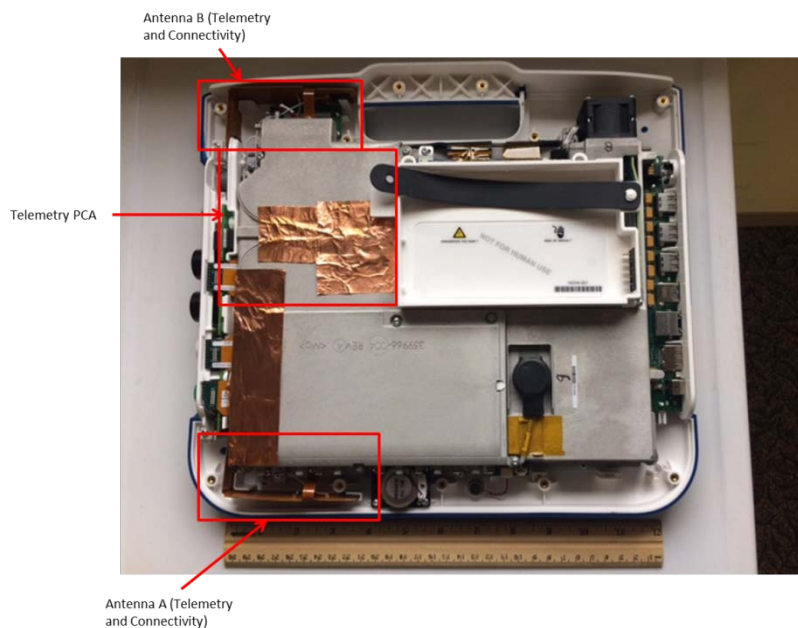


Figure 1 BSC Model 3300 Internal

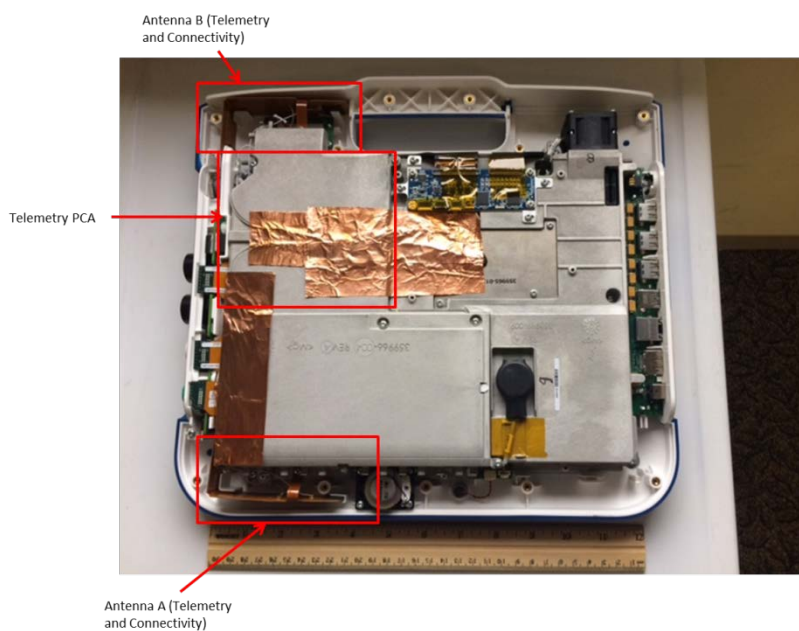


Figure 2 BSC Model 3300 – Battery Cover Removed

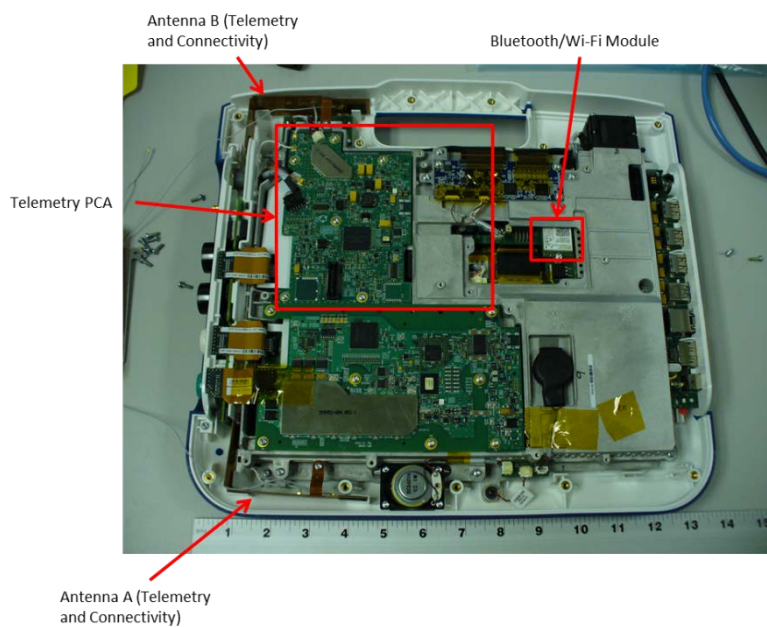


Figure 3 BSC Model 3300 – PCA Shield Removed

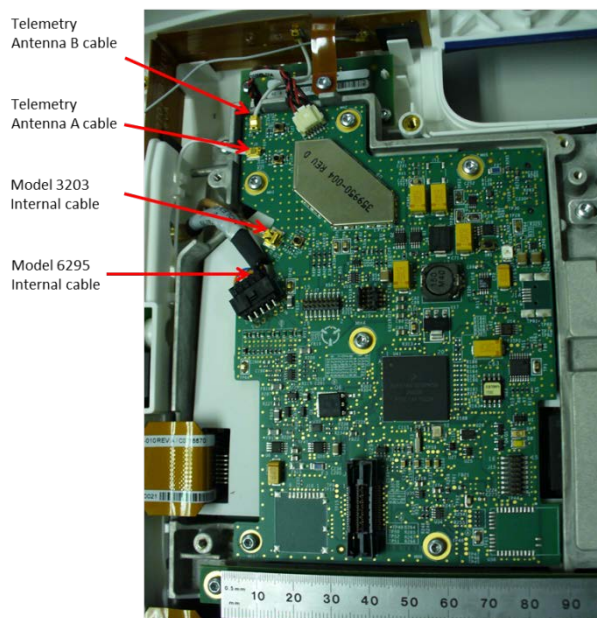


Figure 4 BSC Model 3300 – Telemetry Cables

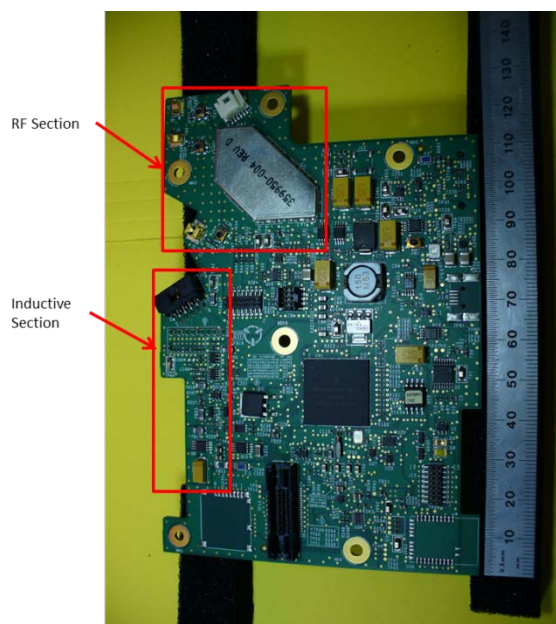


Figure 5 BSC Model 3300 – Telemetry PCA Top

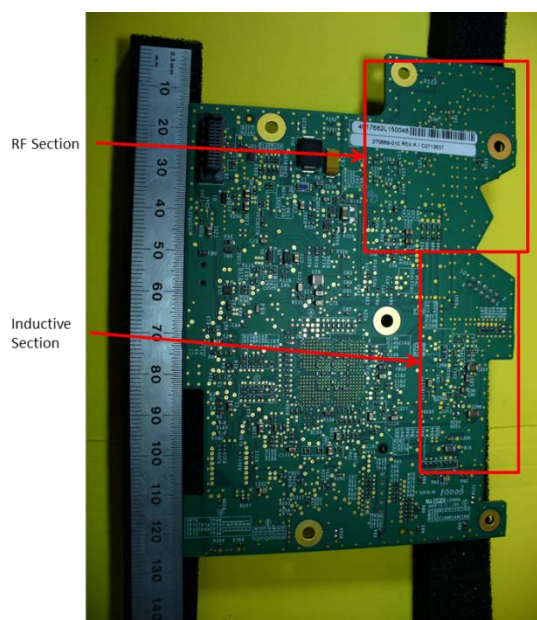


Figure 6 BSC Model 3300 – Telemetry PCA Bottom

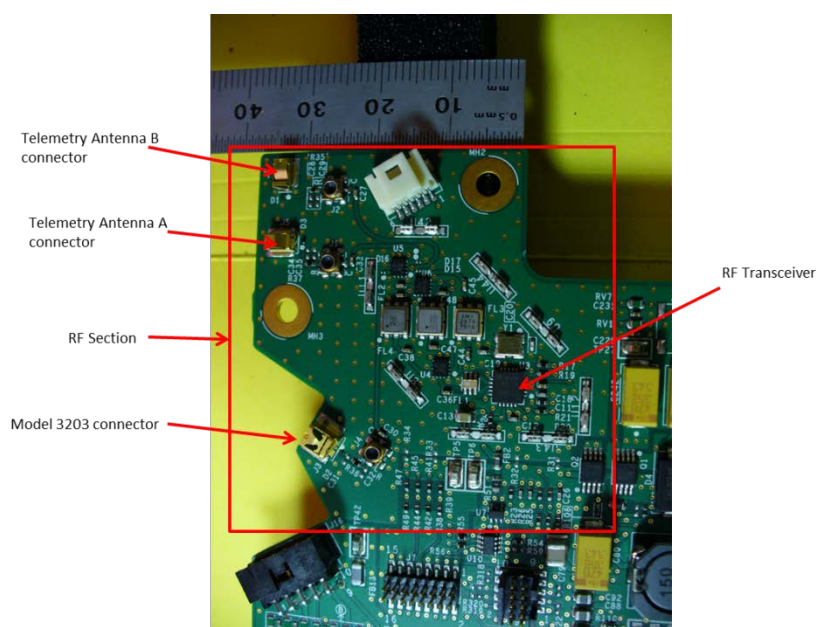


Figure 7 BSC Model 3300 – Telemetry PCA RF Section Top

Model 6295 Internal Connector

Inductive Section

This image shows a close-up of the PCB assembly. A red arrow points to the Model 6295 Internal Connector, a black multi-pin connector. Another red arrow points to the Inductive Section, which is a yellow rectangular component. The PCB is populated with various electronic components, including integrated circuits (ICs), capacitors, and resistors, all labeled with part numbers.

Boston Scientific Corporation

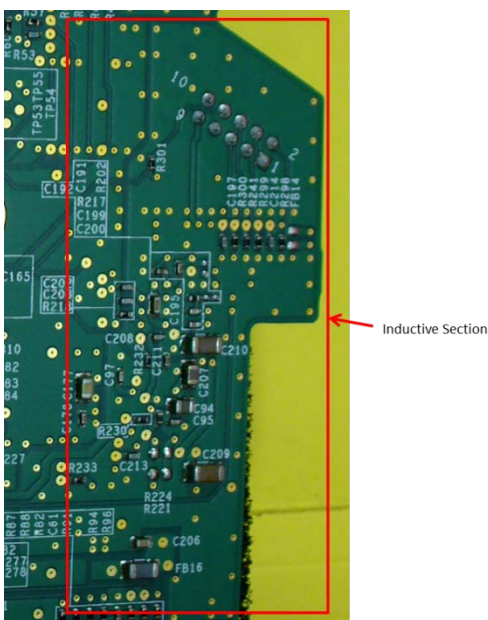


Figure 10 BSC Model 3300 – Telemetry PCA Inductive Section Bottom

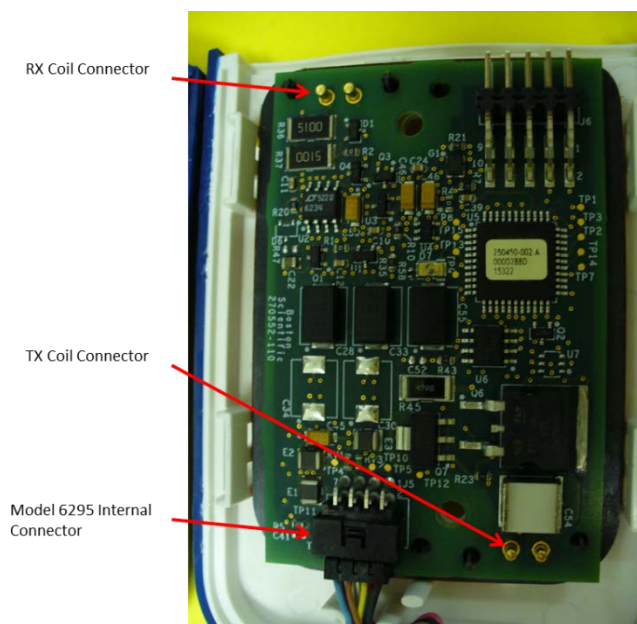


Figure 11 BSC Model 6395 –PCA Top

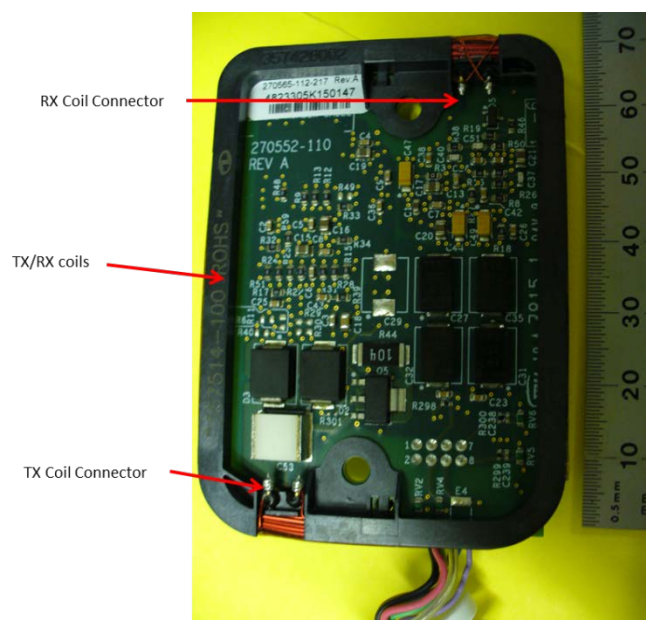


Figure 12 BSC Model 6395 –PCA Top

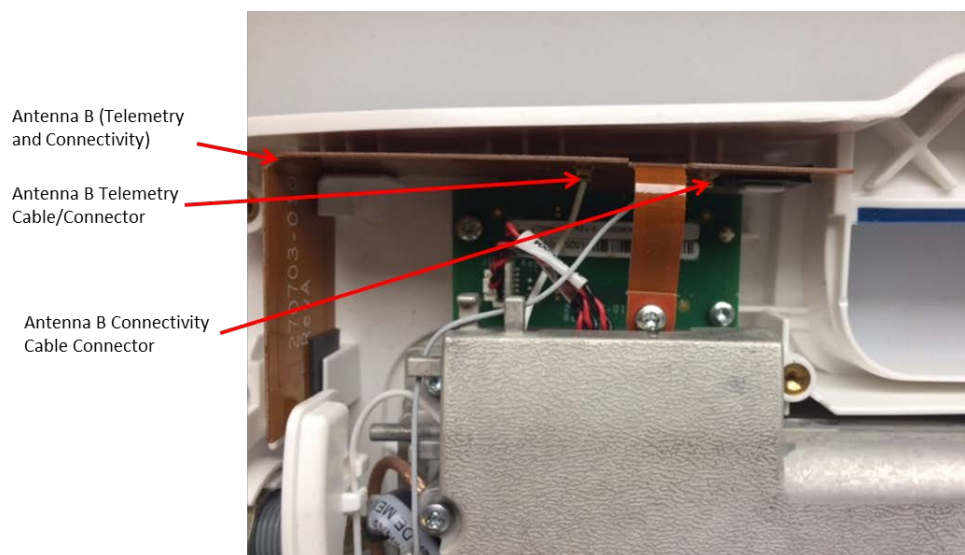


Figure 13 BSC Model 3300 – Antenna B Cables/Connectors

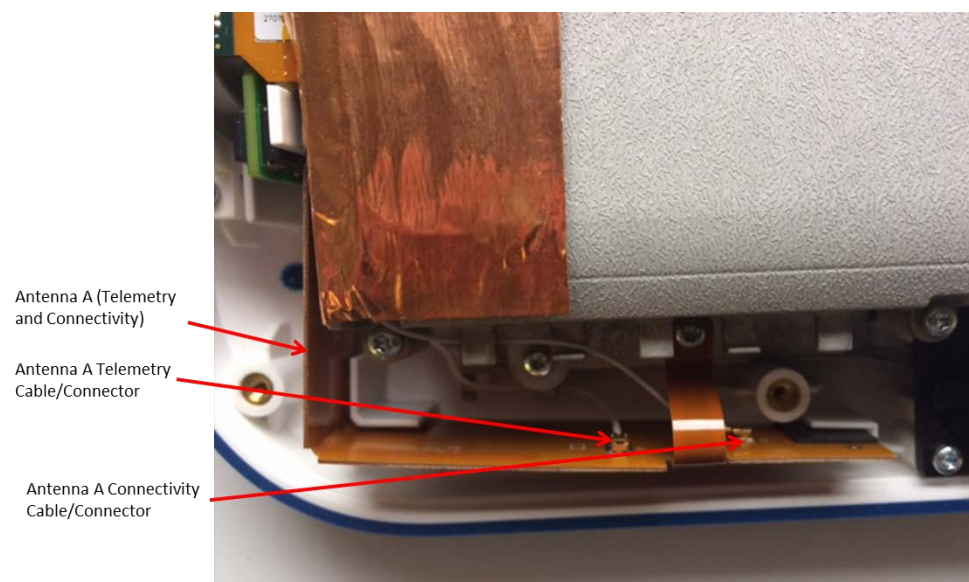


Figure 14 BSC Model 3300 – Antenna A Cables/Connectors

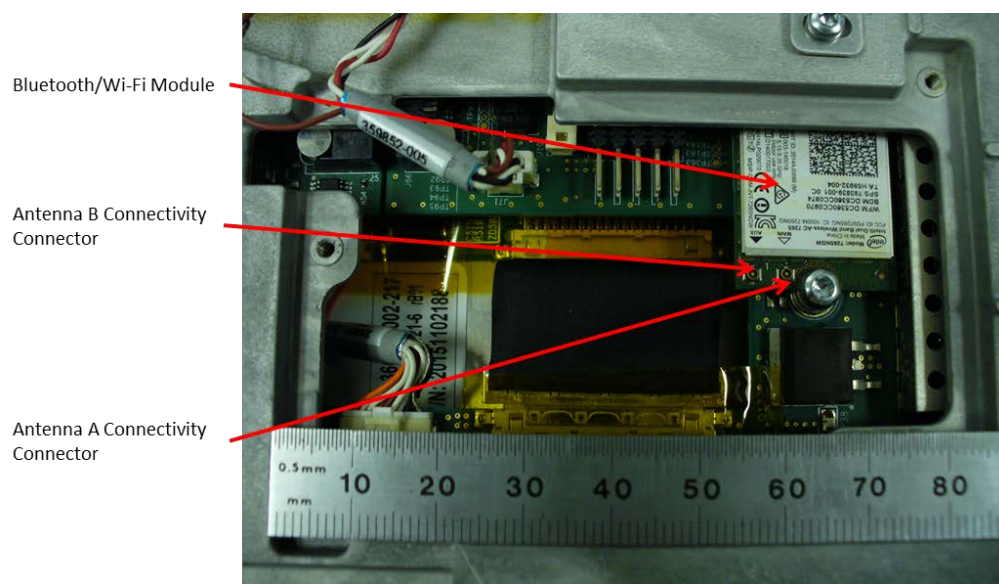


Figure 15 BSC Model 3300 – Bluetooth/Wi-Fi Module