

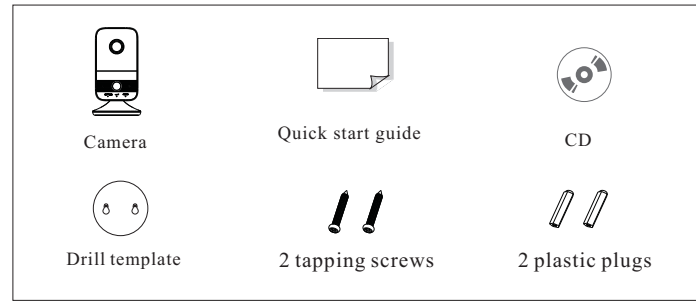
Network Camera Quick Start Guide

- Please read this instruction carefully before using the product and keep it for further reference.
- All the examples and pictures used here are for reference only.
- The contents of this manual are subject to change without notice.

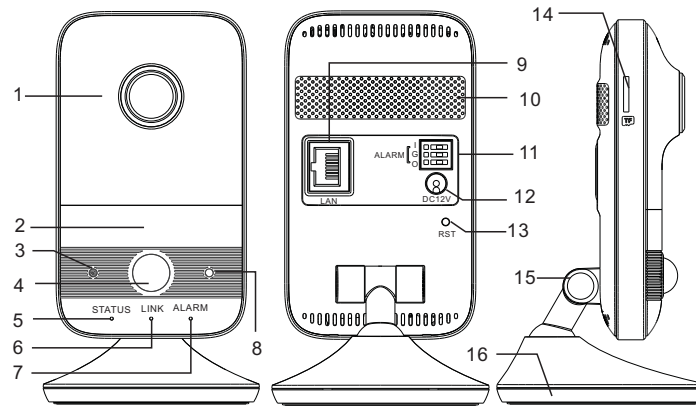
1 Warning and Caution

- If the product does not work properly, please contact your dealer or the nearest service center. Never attempt to disassemble the camera yourself. (We shall not be responsible for any problems caused by unauthorized repair or maintenance.)
- Keep away from liquid while in use.
- In the use of the product, you must be strict compliance with the electrical safety regulations of the nation and region. When the product is mounted on wall, the device shall be firmly fixed.
- Do not use camera beyond specified voltage range.
- Do not drop the camera or subject it to physical shock.
- Avoid touching the camera lens.
- If cleaning is necessary, please use clean cloth to wipe it gently. If the device will not be used for a long time, please cover the lens cap to protect the device from dirt.
- Do not aim the camera at the sun or extra bright place.
- Do not place the camera in extremely hot, cold (the operating temperature shall be -10°C~45°C), dusty or damp locations, and do not expose it to high electromagnetic radiation.
- To avoid heat accumulation, good ventilation is required for operating environment.

2 Package



3 Overview



1	Lens	9	Ethernet connector & PoE
2	IR LED (ON: visible)	10	Speaker
3	Microphone	11	Alarm I/G/O
4	PIR (Passive Infrared) sensor	12	Power connector
5	Power indicator	13	Reset or WPS
6	Network indicator	14	Micro SD card slot
7	Alarm indicator	15	3-axis bracket
8	Light sensing	16	Mounting base

● Alarm Connections:

I: Alarm input interface; O: Alarm output interface; G: Grounding
Alarm input: Connect the cables of the sensor to I and G interfaces.
Alarm output: Connect the cables of the alarm output device to O and G interfaces.

● Indicators

Power indicator: Green: the camera is started successfully.
Network indicator: Flashing blue: the camera is connected to the wired network successfully.
Alarm indicator: Red: alarms are triggered.

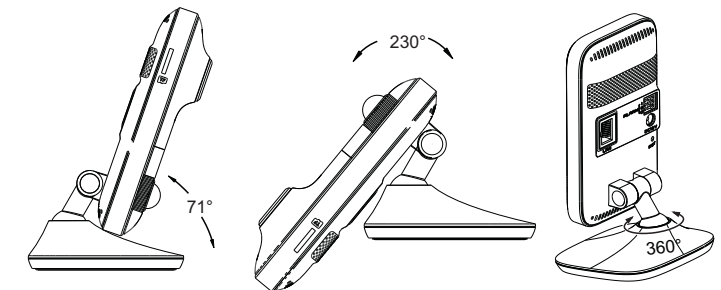
● Reset

Press RST about 10s when the camera is powered on to restore the default settings.

● WPS

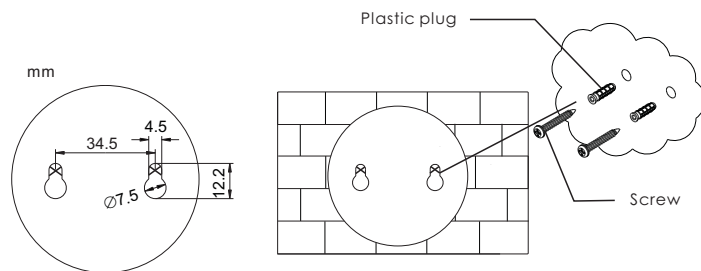
WPS (Wi-Fi Protected Setup): Press the WPS button on the router and then press the RST button on the camera within 120s to quickly connect the Wi-Fi. Pressing the RST button on the camera and then pressing the WPS button on the router will work as well. The red alarm indicator will flash if the Wi-Fi is connected.

● 3-axis Bracket Adjustment

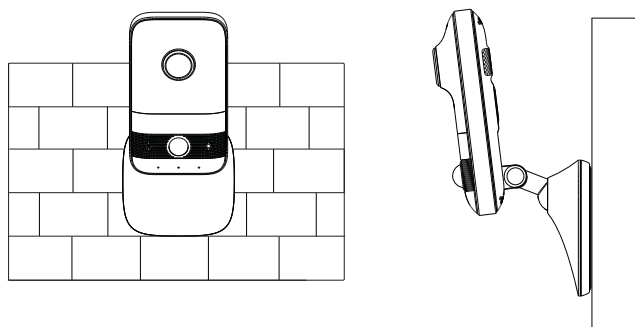


4 Installation

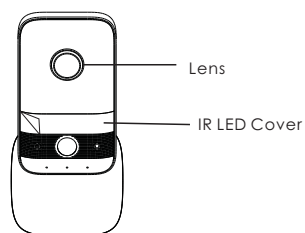
The camera can be placed on the desktop or installed on the wall. Please make sure the wall is strong enough to withstand 3 times the weight of the camera. The steps of wall mounting are as follows.
① Attach the drill template to the place where you want to fix the camera. Then drill the screw holes on the wall according to the drill template.
② Peel off the drill template and then insert the plastic plugs and screws into the screw holes. Please leave a little clearance between the wall and the screws.



- ③ Route and connect the cables.
- ④ Hook the mounting base to the screws and ensure that the camera is fixed firmly. Then adjust the angle of the bracket.

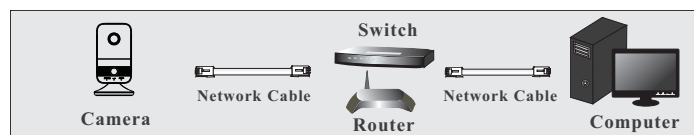


- ⑤ Remove the protection films of the lens and the IR LED cover.

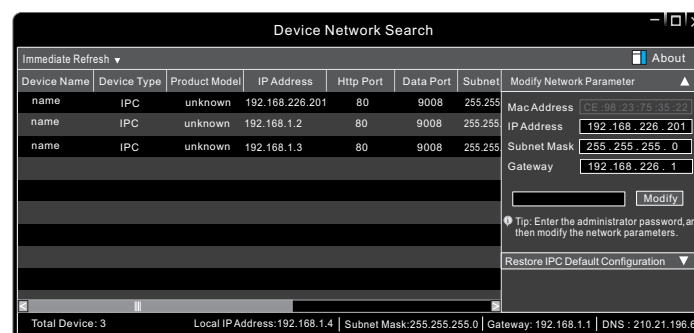


5 Network Connection

● Access the Camera Through the Wired Network



- ① Make sure that the camera and the PC are connected via LAN.
- ② Find the IP-Tool from the CD and then install it in the computer. After that, run the IP-Tool as shown below.



- ③ Modify the IP address. The default IP address of this camera is 192.168.226.201. Click the information of the camera listed in the above table to show the network information on the right hand. Modify the IP address and gateway of the camera and make sure its network address is in the same local network segment as the computer's. Please modify the IP address of your device according to the practical situation. After modification, please enter the password of the administrator and click "Modify" button to modify the setting.

The default password of the administrator is **"123456"**.

- ④ Double-click the IP address listed in the IP-Tool or manually enter the IP address in the address bar of the web browser to connect the camera. Then follow directions to download and install the applicable plug-in. After that, enter the user name and password in the login interface.

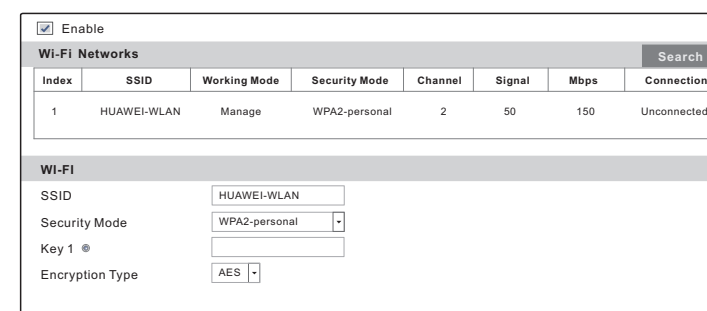
The default username is **admin**; the default password is **123456**.

● Access the Camera Through Wi-Fi

A: You can quickly connect Wi-Fi through WPS function (See 3 Overview--WPS for more details).

B: You can also follow the steps below to connect Wi-Fi.

- ① Connect the camera to the LAN through the network cable.
- ② Run the IP-Tool and then find the IP address of the camera. The default IP address of this camera is 192.168.226.201. Double click it. This will bring you to the login interface of the camera. Enter the default username and password to log in.
- ③ Click "Config"→ "Network"→ "WIFI" to go to the following interface.



- ④ Enable WIFI and click "Search" to search wireless routers. Select the desired router, enter the key number and select encryption type. After that, select "Obtain an IP address automatically" or manually enter the IP address by clicking "Use the following IP address".
- ⑤ Pull the network cable out of the camera.
- ⑥ Run the IP-Tool and find the camera through IP address or MAC address. Then double click it listed in the IP-Tool or enter the IP address of the camera in the address bar of the web browser to access the camera.

C14

4MP Cube Wi-Fi Network Camera



- Max. resolution: 4MP (2560×1440)
- ICR auto switch, true day/night
- 0.3-10m IR night view distance
- 3D DNR, BLC, HLC, etc.
- Support three streams
- Support 2.4G Wi-Fi
- Support mobile app for remote management and viewing of devices
- DC12V/PoE power supply
- Support P2P

Shenzhen TVT Digital Technology Co., LTD.

Address: 23rd Floor, Block B4, Building NO.9, Shenzhen Bay Eco-Technology Park, Nanshan District, Shenzhen, Guangdong Province, P.R. China

Tel: +86-755-36995888

Website: <http://en.tvt.net.cn>

Fax: +86-755-33104777

E-mail: overseas@tvt.net.cn

Specifications

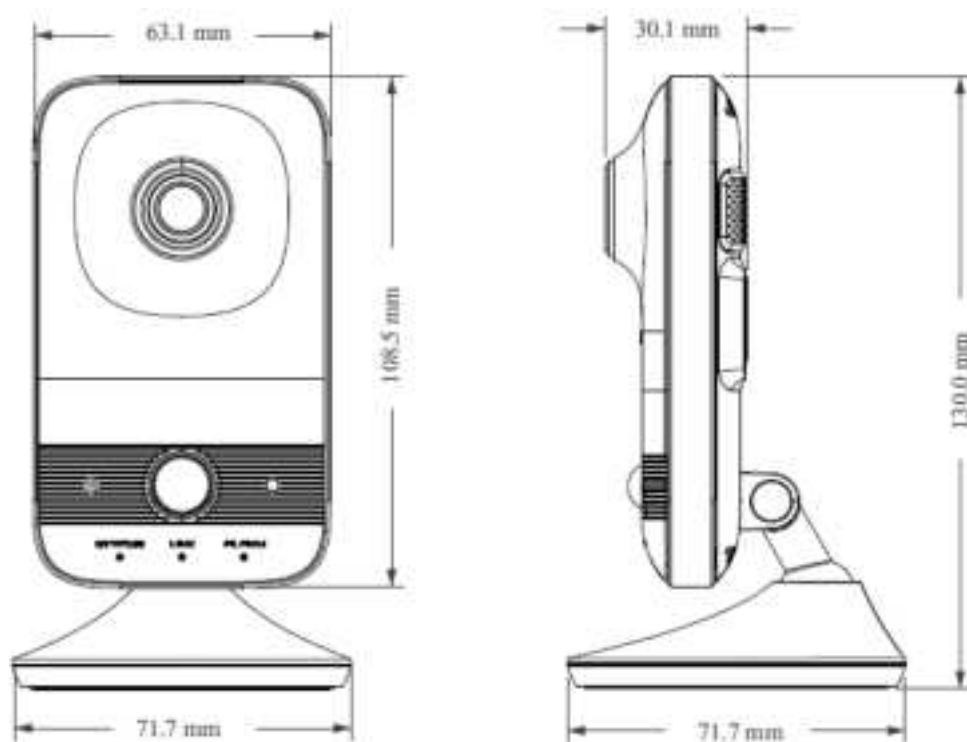
Model	C14
Camera	
Image Sensor	1/3" Progressive Scan CMOS
Image Size	2560×1440
Electronic Shutter	1s ~ 1/100000s
IRIS Type	Fixed IRIS
MIN. Illumination	Color: 0.0035lux@F1.2, AGC ON B&W: 0lux with IR
Lens	2.1mm @F2.1; horizontal field of view: 137°
Lens Mount	M12
WDR	78dB
BLC	Yes
HLC	Yes
Defog	No
DNR	2D/3D NR
Angle Adjustment	Pan: 0°~230°; Tilt: 0°~71°; Rotate: 0°~360°
Image	
Video Compression	H.265+/ H.265/H.264+/H.264/MJPEG
H.264 Compression Standard	Baseline Profile/Main Profile/High Profile
Bit rate Type	VBR/CBR
Bit Rate	64Kbps ~ 6Mbps
Resolution	4MP (2560×1440), 3MP (2304×1296), 1080P (1920×1080), 720P (1280×720), D1, 480×240
Main Stream	60Hz: 4MP/3MP/1080P/720P (1~30fps); 50Hz: 4MP/3MP/1080P/720P (1~25fps)
Sub Stream	60Hz: 720P/D1/CIF (1~30ps); 50Hz: 720P/D1/CIF (1~25ps)
Third Stream	60Hz: D1/ CIF/480×240 (1~30fps); 50Hz: D1/ CIF/480×240 (1~25ps)
Image Setting	Saturation, hue, brightness, contrast, wide dynamic range, sharpness, NR, image flip, etc., adjustable through client or web browser
Audio Compression	G711A/U
Region of Interest	8 regions of interest; each region can be configured separately
APP/Cloud	
Snapshot	Yes
Record	Yes
Two-way Audio	Yes
Listen	Yes
Storage	SD card storage
Playback	SD card storage
Sharing Device	Support sharing with friends
Interface	
Network Interface	100M RJ45
Audio	Built-in MIC×1, built-in speaker×1; echo cancellation supported
Alarm	1CH alarm input; 1CH alarm output
Reset Button	Yes
PIR	Horizontal angle: 100°; Range: 7m
Storage	Built-in micro SD card slot, up to 128G
WiFi	2.4G WiFi function, IEEE802.11b/g/n Up to 50m wireless range
Indicator	Yes

Function	
Remote Monitoring	IE client/mobile APP client
Online Connection	Support simultaneous monitoring for up to 3 users and multi-stream real time transmission
Network Protocol	UDP, IPv4, IPv6, DHCP, NTP, RTSP, PPPoE, DDNS, SMTP, FTP, 802.1x, UPnP, HTTPS, HTTP
Interface Protocol	ONVIF
Storage	Network remote storage
Smart Alarm	Motion detection, sensor alarm, PIR alarm, SD card full, SD card error, IP conflict, cable disconnection
Intelligent Analytics	Human Detection
General Function	Watermark, IP address filtering, video mask, illegal login
IR Light Distance	0.3-10m
Water-proof Grade	No
PoE	Yes, IEEE802.3af
Others	
Power	DC12V/POE
Power Consumption	<5W
Environmental Protection	RoHS 2.0, REACH, WEEE, directive94/62/EC
Working Environment	-20℃~50℃, Humidity: less than 95% (non-condensing)
Dimensions(mm)	130mm×71.7mm×71.7mm
Weight (net)	Approx.0.14KG
Installation	Wall mounting; Ceiling mounting; desktop mounting

Available Model

Available Model	C14	4MP Cube Wi-Fi Network Camera
-----------------	-----	-------------------------------

Dimensions



FCC Warning:

This equipment has been tested and found to comply with the limits for a Class B digital device, pursuant to part 15 of the FCC Rules. These limits are designed to provide reasonable protection against harmful interference in a residential installation. This equipment generates, uses and can radiate radio frequency energy and, if not installed and used in accordance with the instructions, may cause harmful interference to radio communications. However, there is no guarantee that interference will not occur in a particular installation. If this equipment does cause harmful interference to radio or television reception, which can be determined by turning the equipment off and on, the user is encouraged to try to correct the interference by one or more of the following measures:

- Reorient or relocate the receiving antenna.
- Increase the separation between the equipment and receiver.
- Connect the equipment into an outlet on a circuit different from that to which the receiver is connected.
- Consult the dealer or an experienced radio/TV technician for help.

Caution: Any changes or modifications to this device not explicitly approved by manufacturer could void your authority to operate this equipment.

This device complies with part 15 of the FCC Rules. Operation is subject to the following two conditions:

(1) This device may not cause harmful interference, and (2) this device must accept any interference received, including interference that may cause undesired operation.

This equipment complies with FCC radiation exposure limits set forth for an uncontrolled environment. This equipment should be installed and operated with minimum distance 20cm between the radiator and your body.