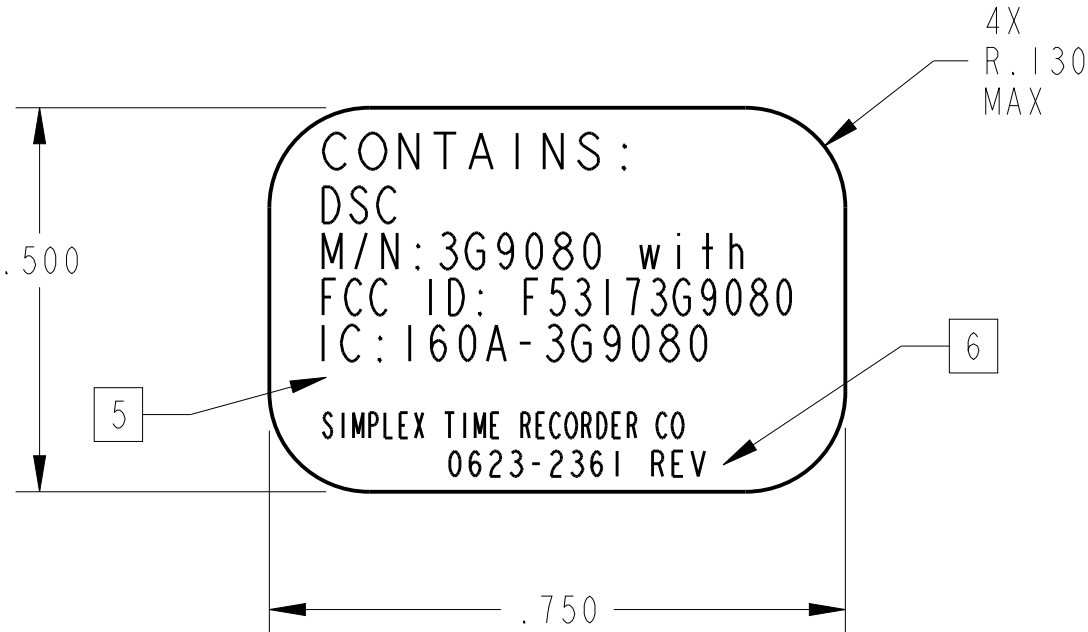
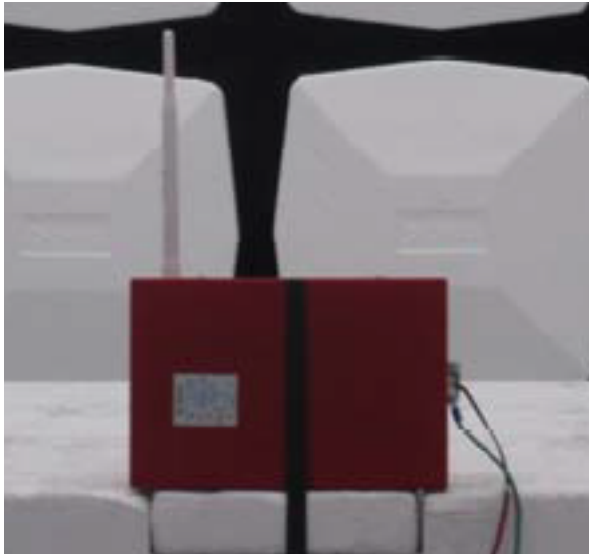


SIZE	DWG NO.		REV.2
B	0623-2361		
REV	ECO	DATE	CHK
PRE-RELEASED			
1	MI7-0022		
2	MI7-0030		



NOTES:

1. MATERIAL: 0570-250 WHITE LABEL STOCK, ADHESIVE BACKED WITH PROTECTIVE LINER.
2. ALL CHARACTERS TO BE BLACK.
3. MARKINGS ON LABEL MUST BE PERMANENT.
4. PRINTING TO BE CENTRALLY LOCATED ON LABEL WITHIN .06.
5. COUNTRY LOCATION AND FACTORY LOCATION STATEMENT SHALL BE ADDED BY MANUFACTURING IN AREA INDICATED. REFER TO DOCUMENT 0900-251 FOR THE LISTING OF COUNTRY AND FACTORY LOCATIONS.
6. MARK LATEST REVISION LETTER WHERE SHOWN.
7. PICTORIAL SHOWN FOR REFERENCE ONLY, ACCEPTANCE OF LABEL BASED ON MANUFACTURING'S PRINTED LABEL.
8. NEXT ASSEMBLY: 0650-1777, 0650-2183

A/R	RIBBON, BLACK	0527-360	I
QTY	DESCRIPTION	PART NO.	ITEM

NOTE: THE INFORMATION CONTAINED IN THIS DOCUMENT IS PROPRIETARY TO TYCO/SAFETY PRODUCTS WESTMINSTER AND IS INTENDED FOR INTERNAL TYCO/SAFETY PRODUCTS WESTMINSTER USE ONLY. SUCH INFORMATION MAY BE DISTRIBUTED TO OTHERS ONLY BY WRITTEN PERMISSION OF AN AUTHORIZED TYCO/SAFETY PRODUCTS WESTMINSTER OFFICIAL. THIS RESTRICTION DOES NOT APPLY TO VENDOR PROPRIETARY PARTS THAT MAY BE DISCLOSED IN THIS DOCUMENT.					
TOLERANCE: TOLERANCE APPLIES TO ALL DIMENSIONS UNLESS OTHERWISE SPECIFIED. .XXX = ± 0.032 .XX = ± 0.01 .X = ± 0.1 ANG. = ± 0.50	NEXT ASSY 8	MATERIAL 1	DRAFTSMAN S.VARIEUR 20/MAR/17	<div>tyco / Safety Products Westminster</div> <div>50 TECHNOLOGY DRIVE, WESTMINSTER, MA. 01441</div>	
	SCALE 4/1		CHECKER		
	HEAT TREAT //	FINISH 2	APPROVED		
DRAWING CONFORMS TO TYCO/SAFETY PRODUCTS DRAFTING STANDARDS AND THE APPLICABLE ANSI STANDARDS LISTED BELOW: Y14.1-1980 Y14.5M-1982 Y14.2M-1979 Y14.6-1978 Y14.3-1975 Y14.36-1978 ANSI/AWS A2.4-86	PROJECTION 	DO NOT SCALE DRAWING- ALL DIMENSIONS IN INCHES		TITLE PANEL LBL, CELL MOD, AT&T	
		APPROVED		EQUIP EXACTECH	
		SIZE B	DWG NO. 0623-2361	SHT 1	REV.2 OF 1

PRO/E CONTROLLED

MODEL DATABASE NAME:	P6232361	REV.2
DRAWING DATABASE NAME:	D6232361	REV.3
FILE PATH:	EXACTECH	