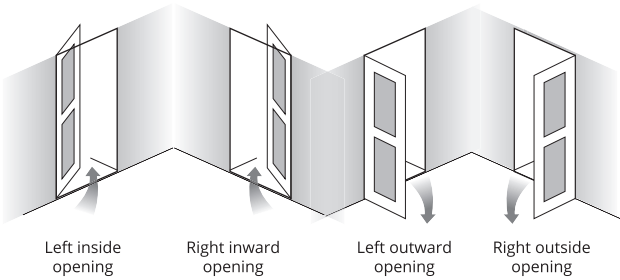


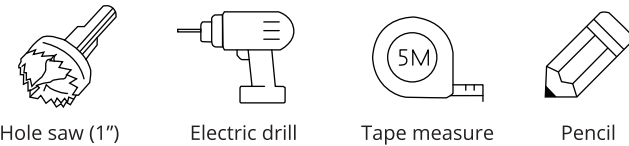
Preparation

1. Confirm The Opening Direction:

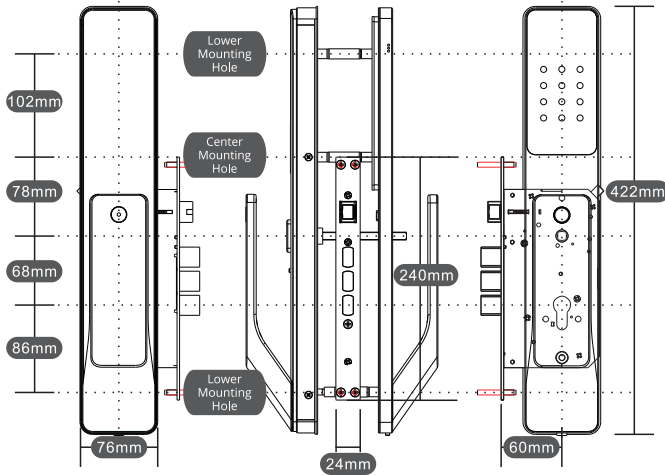
This smart lock is suitable for inward and outward opening doors and both left and right side handing.



2. Tools required:



3. Installation Dimensions:

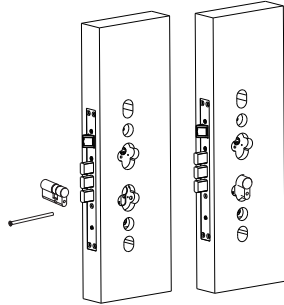


△ The standard configuration is for a 24x240mm electronic mortise.  
△ Place the cutting guide on the door before you drill.  
△ Ensure that you choose the correct screw length before mounting the lock on the door.

Installation

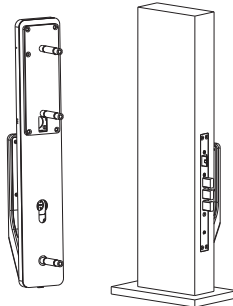
1. Mortise Cassette Installation:

- a. Install the mortise cassette first and mount it firmly inside the door pocket.
- b. Use the provided M5x70 screw to secure the lock cylinder.



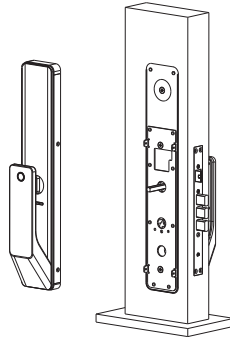
2. Front Panel Installation:

- a. Screw the 3 standoffs into the front panel.
- b. Feed the data cable through the door into the back of the door.



3. Rear Panel Installation:

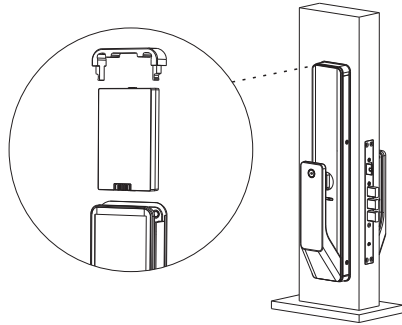
- a. Connect the data cable to the rear panel.
- b. Place it against the door surface and secure it from the side.



Installation

4. Battery Installation:

- a. Insert the battery pack into the panel with the electrical slot facing you.
- b. Close the battery cover with the provided cap.



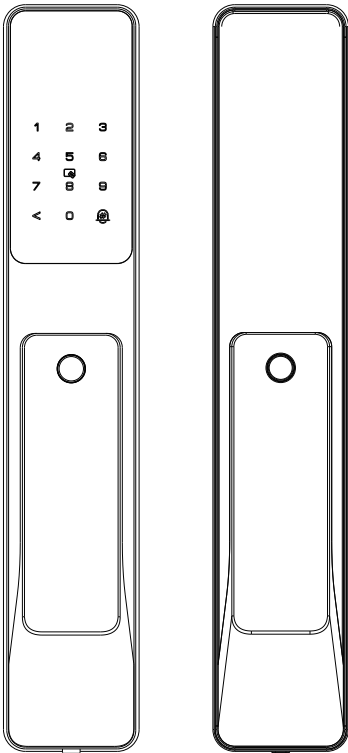
5. Final Checklist:

- a. After the installation is complete try to unlock the door with a knob to see if the mechanical connection is normal.
- b. Try to use the passcode (123456#) and see if the keypad wakes up.
- c. Pair the lock to the mobile app before usage.

Warranty

- 1. We offer a comprehensive 2 years warranty from the date of purchase and installation.
- 2. Warranty is void if:
  - a. The product is not installed by an authorized PRISM+ installer.
  - b. The product is not used with a spring loaded door closer.
  - c. Failure to use the product according to the instruction manual.
  - d. Damage caused by external factors such as natural causes and water ingress.
- 3. For products out of warranty, a reasonable fee will be charge for repair and maintenance services.
- 4. Our company deserves the final right of interpretation and is subject to change without prior notice.

PRISM+  
Sentinel  
User Manual



Please read before using the product  
Version 1.0

Introduction

Product Introduction

1. Please read this manual carefully before installation and use of the product.
2. Failure to abide by these instructions may lead to issues that will void your warranty. PRISM+ will not be held responsible for any injuries and problems arising from such issues.
3. Please ensure that this product is installed only by an authorized PRISM+ installer.

Door Compatibility Guide

1. Door Thickness: 40-60mm
2. Door Handedness: Right and Left side opening
3. Direction of Opening: Inwards and Outwards

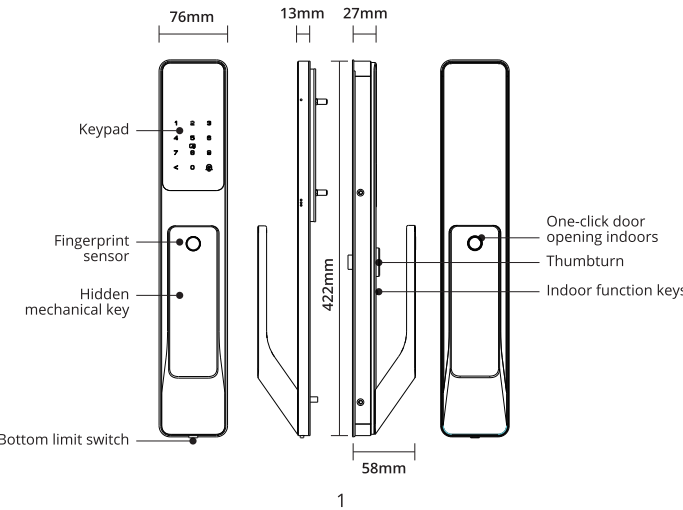
Product Setup Instructions:

You are required to set up the administrator password of the PRISM+ Sentinel via the PRISM+ Connect App.

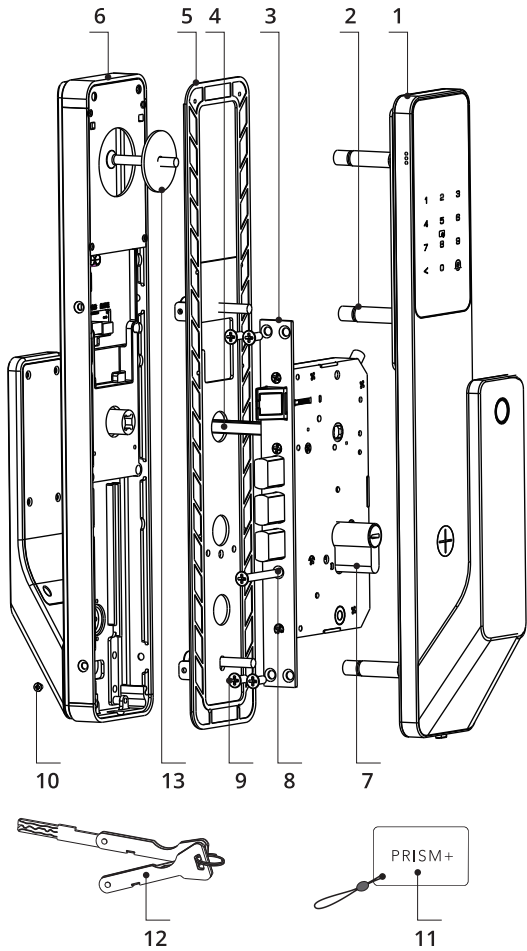
Unlocking Methods			
Fingerprint	Keypad	PRISM+ Connect App	Card
If PRISM+ Sentinel battery is too low to function:			
A Type-C USB cable can be inserted to jumpstart the device.			

Once the product is installed, please sync your device to your PRISM+ Connect App to set different modes of entry and to change lock settings.

Product Anatomy



Product Anatomy



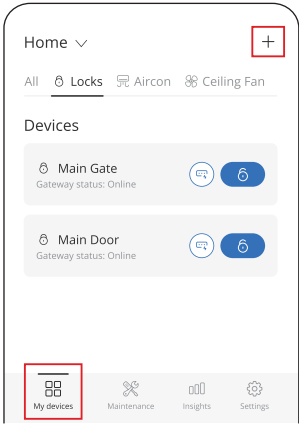
- |                         |          |                              |         |
|-------------------------|----------|------------------------------|---------|
| 1. Front panel          | (1 pc)   | 8. Lock core fixing screw    | (1 pc)  |
| 2. Standoffs            | (3 pcs)  | 9. Lock body fixing screws   | (4 pcs) |
| 3. Lock body            | (1 item) | 10. Rear panel fixing screws | (2 pcs) |
| 4. Base plate           | (1 item) | 11. Key card                 | (2 pcs) |
| 5. Sealing silicone pad | (1 pc)   | 12. Mechanical keys          | (2 pcs) |
| 6. Rear panel           | (1 pc)   | 13. Rear plate solid         | (1 pc)  |
| 7. Lock cylinder        | (1 pc)   |                              |         |

**Door Compatibility**

The default accessory kit is suitable for door thickness of 40-60mm.

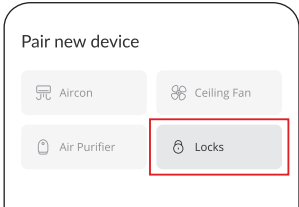
**Note:** Product size and layout may differ slightly due to design and product updates. The pictures used in this guide are for reference only.

Pairing Instructions

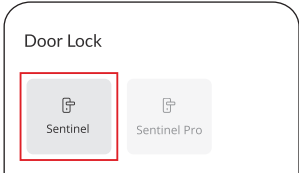


1. Touch the keypad to wake up the lock.

Select the '+' icon on the top right of the 'My devices' screen.

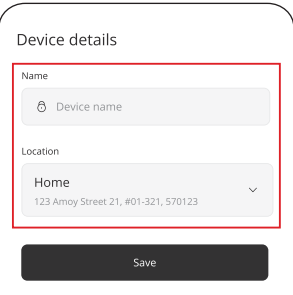


2. Select, 'Locks' > 'Sentinel'.



3. Tap 'Continue', follow the on-screen instructions, and wait for your lock to connect.

Pairing Instructions

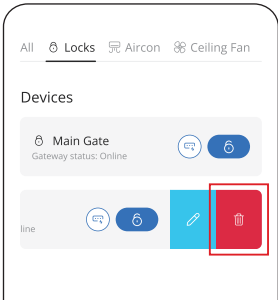


4. Name your device (eg. Home), and then set the location to your current location.

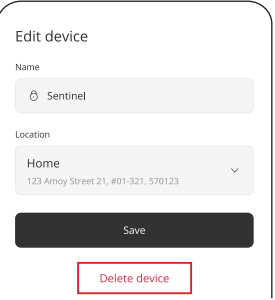
Tap 'Save' to complete.

Delete Device Instructions

There are 2 ways to delete the device:



**Method 1:**  
Under 'My devices', swipe left on 'Sentinel', select 'Delete'.



**Method 2:**  
Under 'My devices', select 'Sentinel'.  
Select the settings icon on the top right corner, and select 'Edit device'.  
Select 'Delete device'.

Reset Instructions



1. Press and hold the lock & unlock button on the back panel of the lock together till you hear "Please input initialization passcode".
2. Enter 000# and the lock will be restored to factory settings.

FCC Statement

Changes or modifications not expressly approved by the party responsible for compliance could void the user's authority to operate the equipment.

This equipment has been tested and found to comply with the limits for a Class B digital device, pursuant to Part 15 of the FCC Rules. These limits are designed to provide reasonable protection against harmful interference in a residential installation. This equipment generates uses and can radiate radio frequency energy and, if not installed and used in accordance with the instructions, may cause harmful interference to radio communications. However, there is no guarantee that interference will not occur in a particular installation. If this equipment does cause harmful interference to radio or television reception, which can be determined by turning the equipment off and on, the user is encouraged to try to correct the interference by one or more of the following measures:

- Reorient or relocate the receiving antenna.
- Increase the separation between the equipment and receiver.
- Connect the equipment into an outlet on a circuit different from that to which the receiver is connected.
- Consult the dealer or an experienced radio/TV technician for help

This device complies with part 15 of the FCC rules. Operation is subject to the following two conditions (1)this device may not cause harmful interference, and (2) this device must accept any interference received, including interference that may cause undesired operation. This equipment complies with FCC radiation exposure limits set forth for an uncontrolled environment. This equipment should be installed and operated with minimum distance 20cm between the radiator & your body.